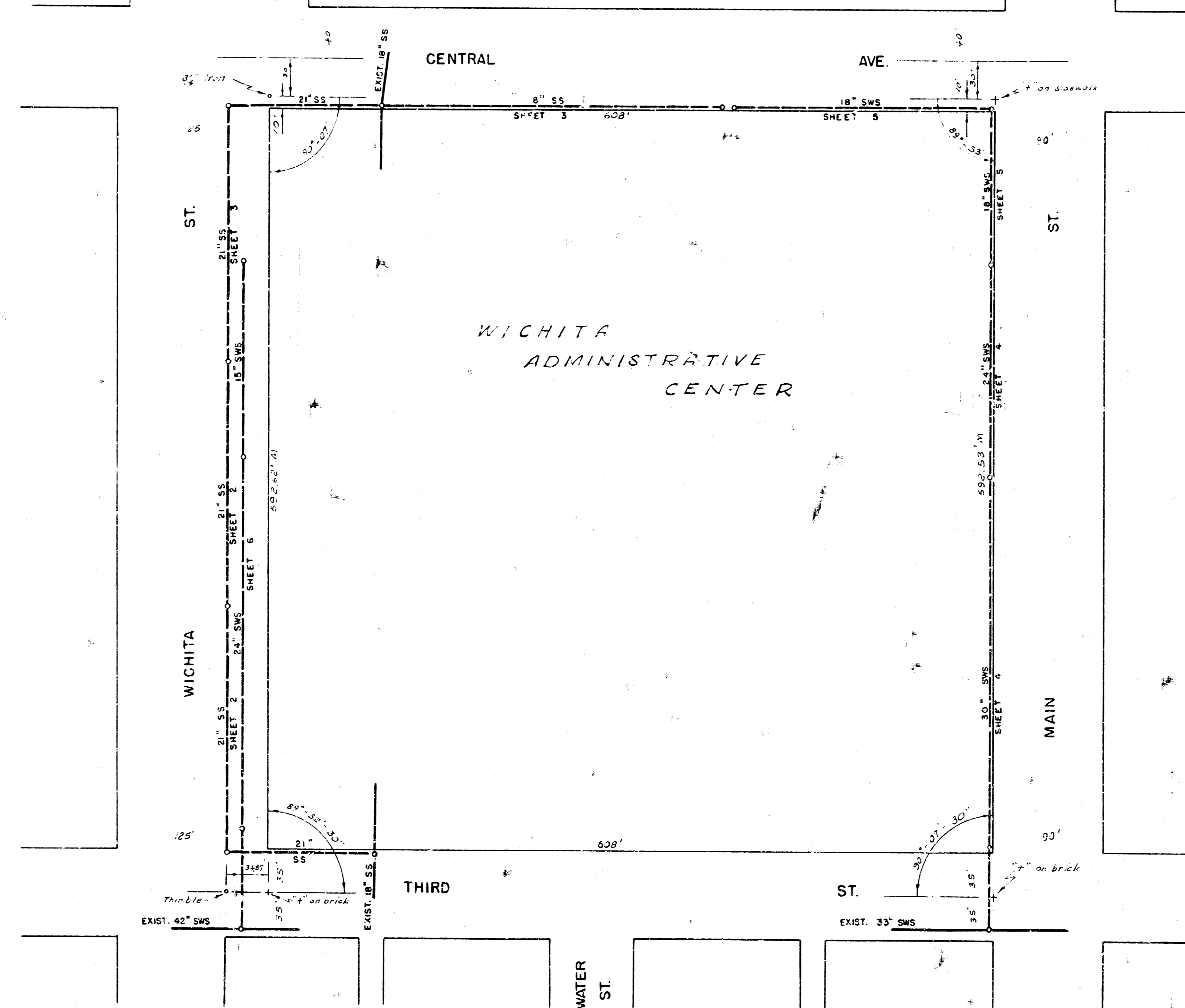
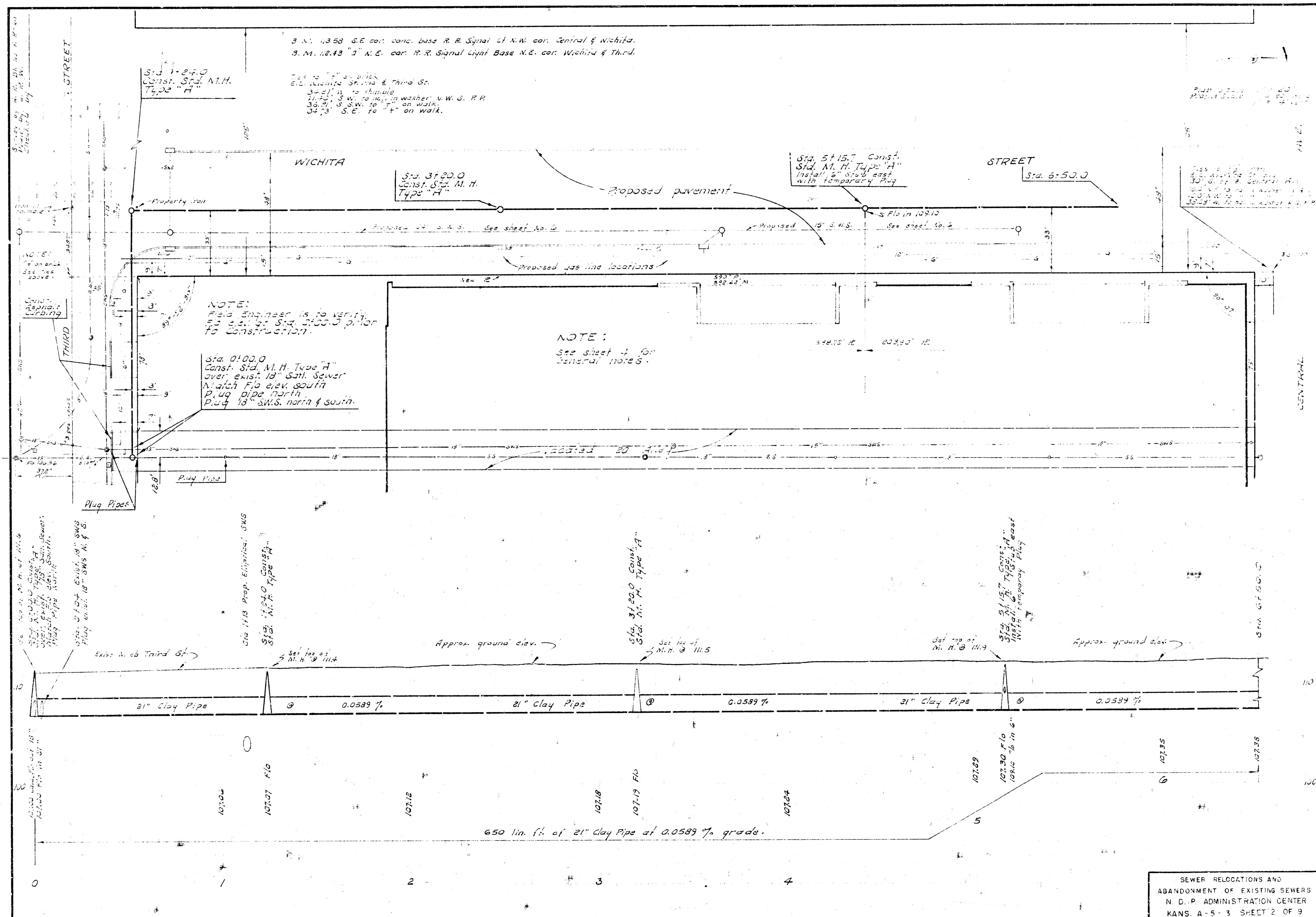


THE URBAN RENEWAL AGENCY
 OF THE
 WICHITA, KANSAS METROPOLITAN AREA
 SANITARY SEWER RELOCATION
 STORM WATER SEWER RELOCATION
 AND
 ABANDONMENT OF EXISTING SEWERS
 NEIGHBORHOOD DEVELOPMENT PROGRAM
 ADMINISTRATION CENTER ACTIVITY AREA
 ENGINEERING DIVISION, DEPARTMENT OF PUBLIC WORKS
 B. E. SMITH — CITY ENGINEER
 MARCH 1971, KANS A-5-3

N
 SCALE 1" = 50'





3 N. 11358 G.E. cor. conc. base R. R. Signal Lt N.W. cor. Central & Wichita.
 9. M. 12.43 "I" N.E. cor. R. R. Signal Light Base N.E. cor. Wichita & Third.

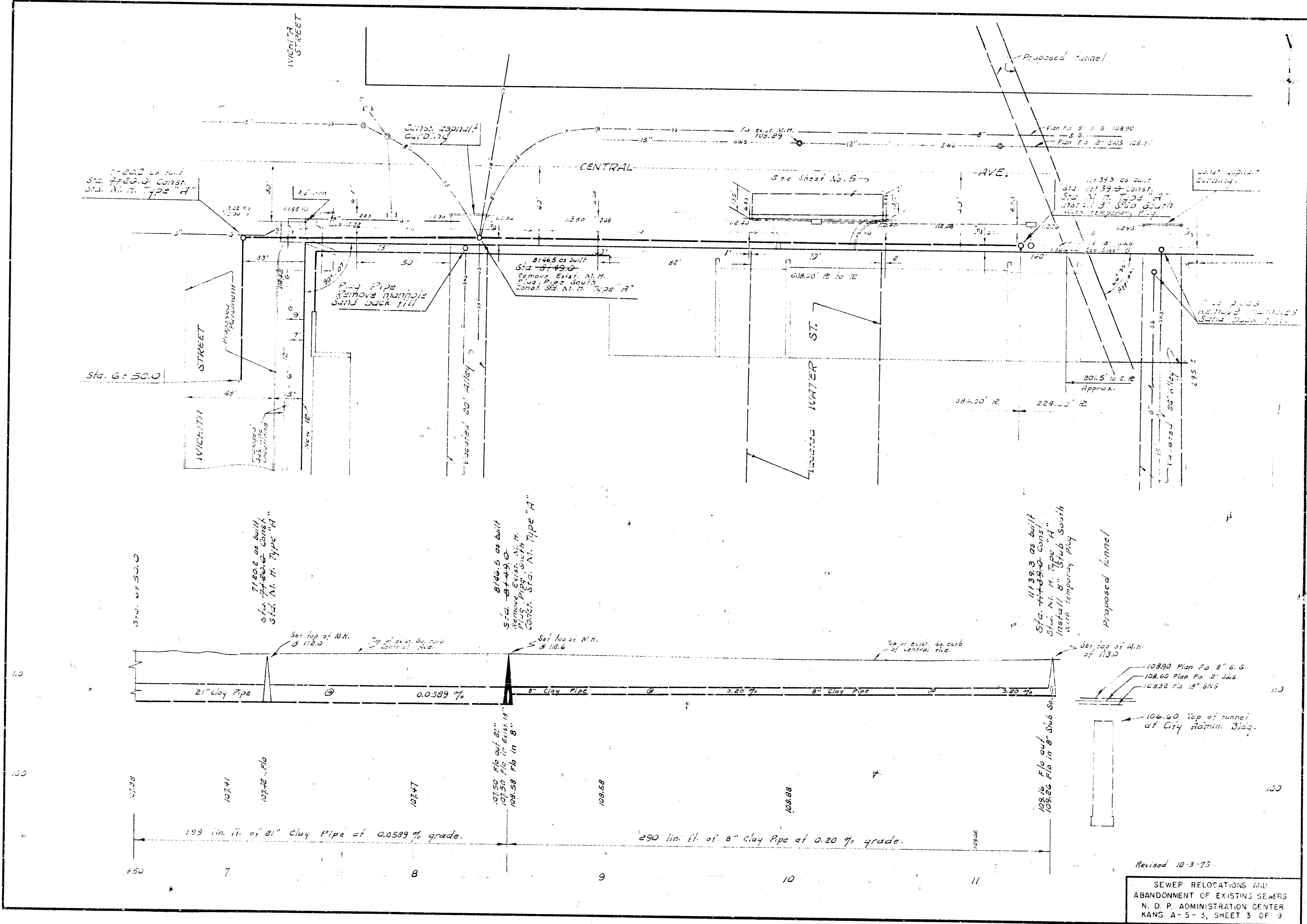
See sheet 10 for
 10. Wichita drainage & Third St.
 3+21.11 to 11th St.
 7+15.7 S.W. to existing washer V.W.S. R.R.
 33+21 S.W. to "T" on walk.
 33+23 S.E. to "T" on walk.

NOTE:
 Field Engineer is to verify
 as to location of Sta. 3+20.0 prior
 to construction.

Sta. 0+00.0
 Const. Std. M.H. Type "A"
 over exist. 18" S.W.S. Sewer
 Match Fla elev. south
 Plug pipe north
 Plug 18" S.W.S. north & south.

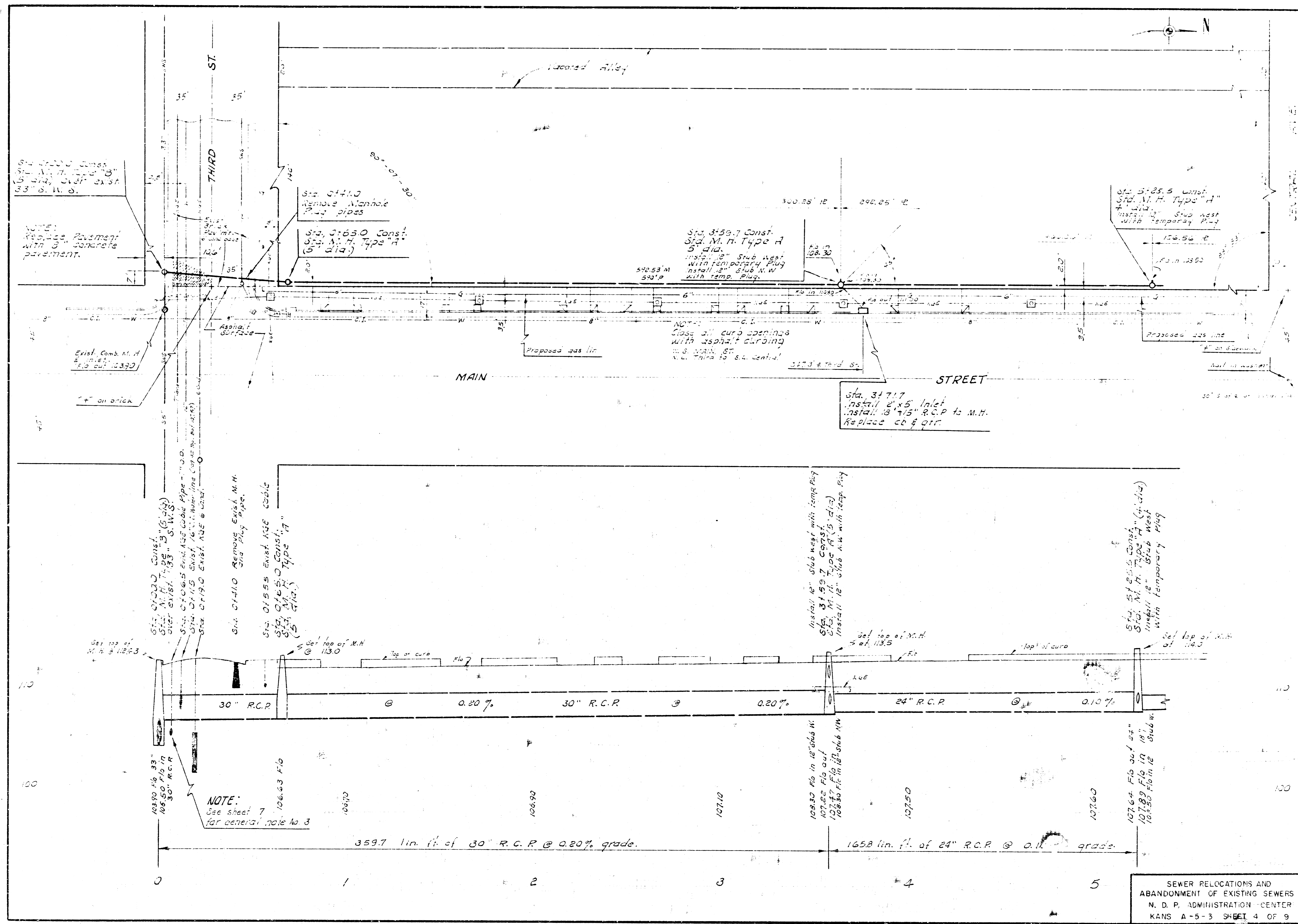
NOTE:
 See sheet 4 for
 general notes.

SEWER RELOCATIONS AND
 ABANDONMENT OF EXISTING SEWERS
 N. D. P. ADMINISTRATION CENTER
 KANS. A-5-3 SHEET 2 OF 9



Revised 10-3-73

SEWER RELOCATIONS AND
 ABANDONMENT OF EXISTING SEWERS
 N. D. P. ADMINISTRATION CENTER
 KANG. A-5-3, SHEET 3 OF 3



NOTE: Replace Pavement with 3" concrete pavement.

Exist. Comb. M.H. 42.0' dia. 12320

Sta. 01410 Remove Manhole 36" dia. pipes

Sta. 01650 Const. 5' dia. M.H. Type A (5' dia.)

Sta. 3159.7 Const. 5' dia. M.H. Type A with temporary Plug install 12" stub M.H. with temp. Plug.

Sta. 3125.5 Const. 5' dia. M.H. Type A with temporary Plug

NOTE: Close all curb openings with asphalt curbing and install 6" x 6" manhole to S.E. center.

Sta. 31717 Install 2' x 5' Inlet install 18" dia. R.C.P. to M.H. Replace CO & GTR

Sta. 01020 Const. 5' dia. M.H. Type A (5' dia.)

Sta. 01065 Const. 5' dia. M.H. Type A (5' dia.)

Sta. 01110 Const. 5' dia. M.H. Type A (5' dia.)

Sta. 01155 Const. 5' dia. M.H. Type A (5' dia.)

Sta. 01200 Const. 5' dia. M.H. Type A (5' dia.)

Sta. 01245 Const. 5' dia. M.H. Type A (5' dia.)

Sta. 01290 Const. 5' dia. M.H. Type A (5' dia.)

Sta. 01335 Const. 5' dia. M.H. Type A (5' dia.)

Sta. 01380 Const. 5' dia. M.H. Type A (5' dia.)

Sta. 01425 Const. 5' dia. M.H. Type A (5' dia.)

Sta. 01470 Const. 5' dia. M.H. Type A (5' dia.)

Sta. 01515 Const. 5' dia. M.H. Type A (5' dia.)

Sta. 01560 Const. 5' dia. M.H. Type A (5' dia.)

Sta. 01605 Const. 5' dia. M.H. Type A (5' dia.)

Sta. 01650 Const. 5' dia. M.H. Type A (5' dia.)

Sta. 01695 Const. 5' dia. M.H. Type A (5' dia.)

Sta. 01740 Const. 5' dia. M.H. Type A (5' dia.)

Sta. 01785 Const. 5' dia. M.H. Type A (5' dia.)

Sta. 01830 Const. 5' dia. M.H. Type A (5' dia.)

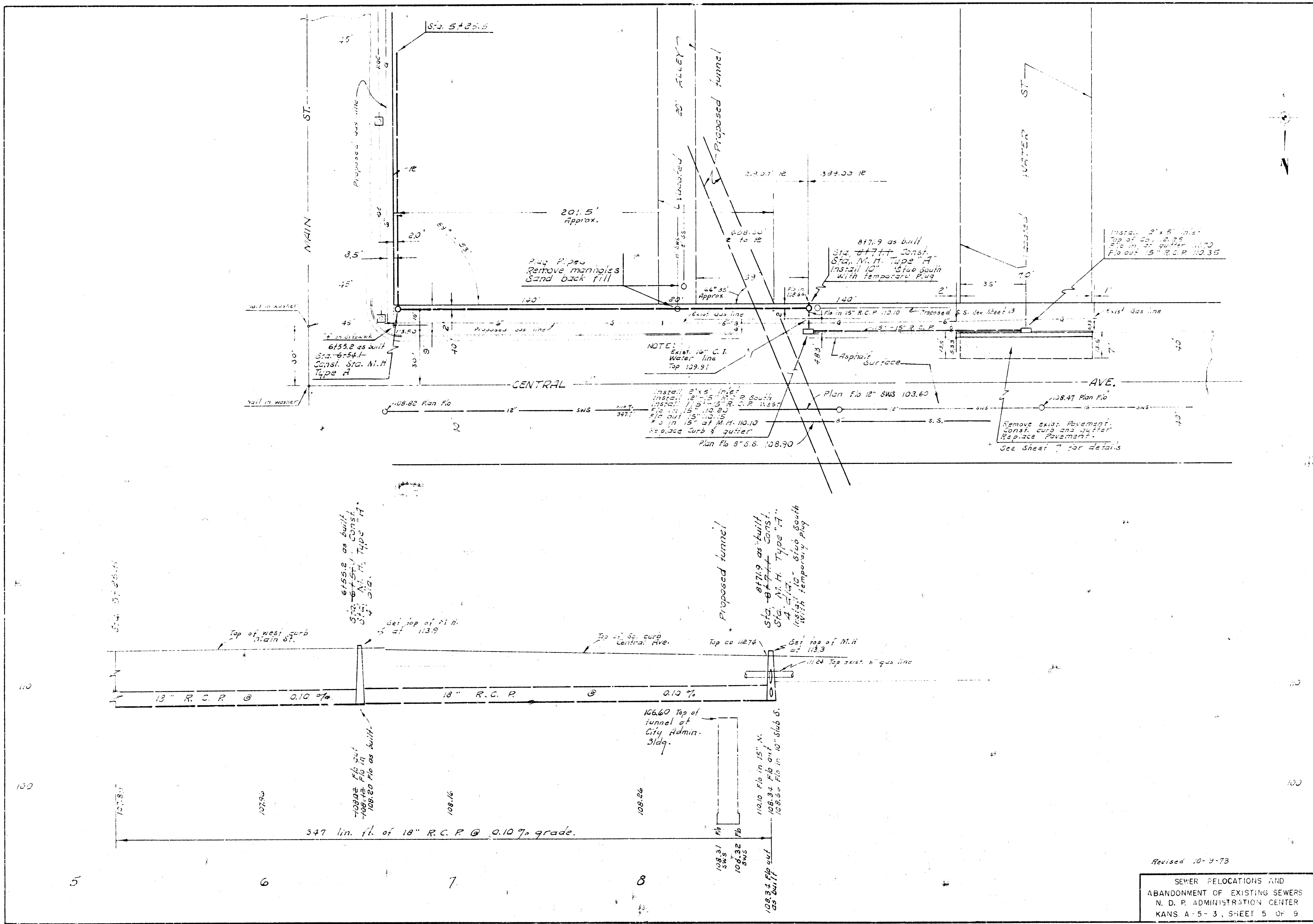
Sta. 01875 Const. 5' dia. M.H. Type A (5' dia.)

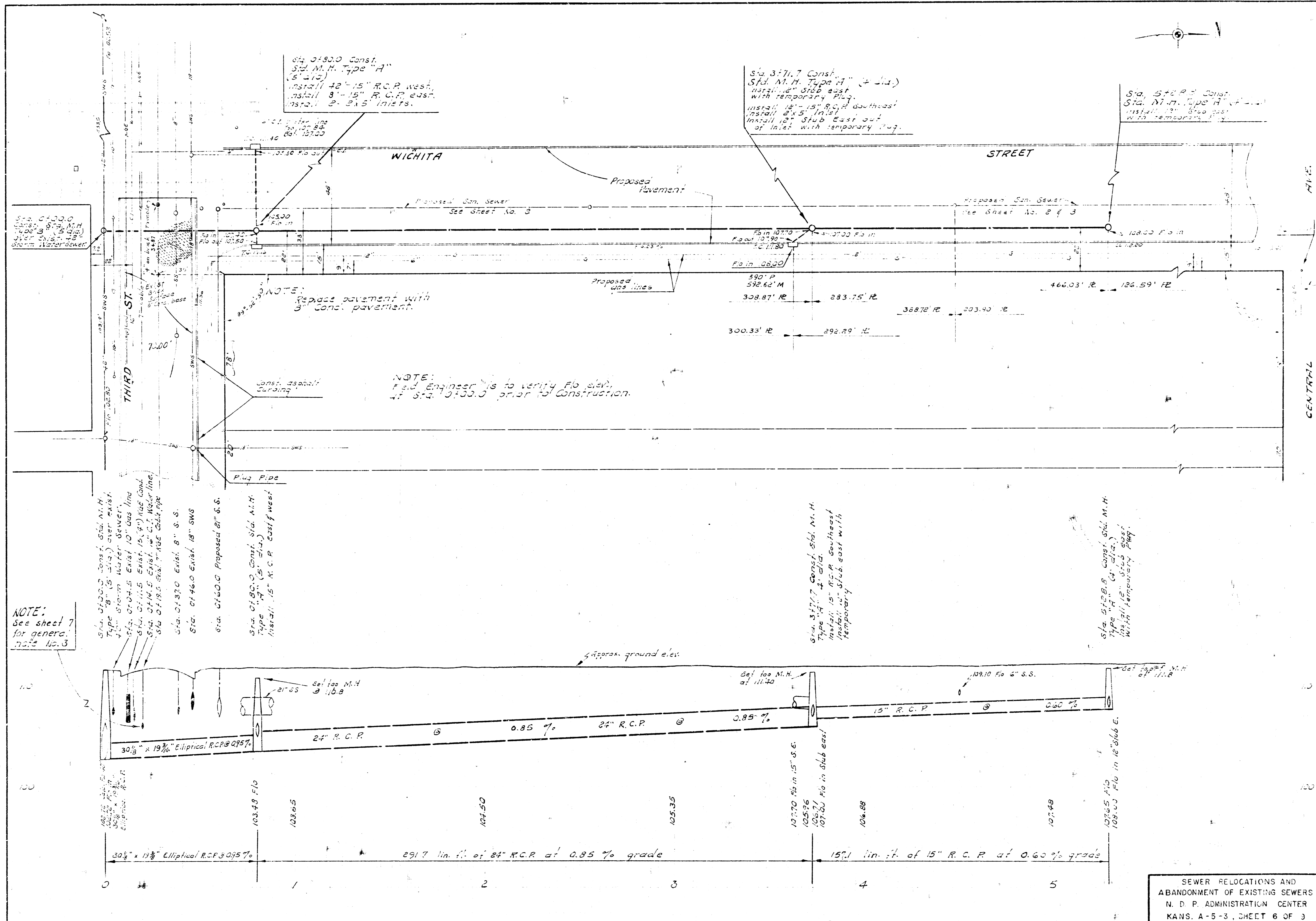
NOTE: See sheet 7 for general note no 3

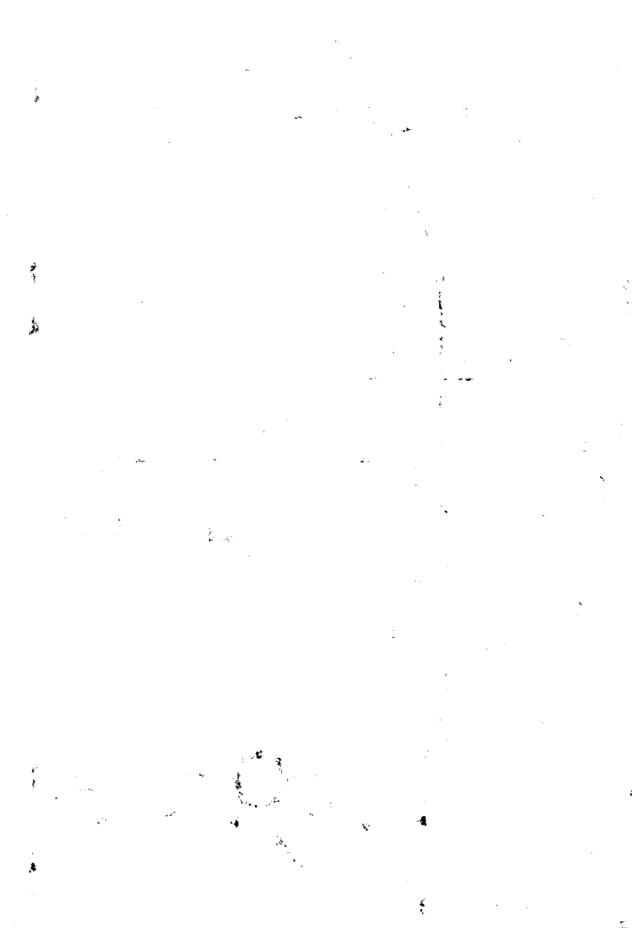
359.7 lin. ft. of 30" R.C.P. @ 0.20% grade.

165.8 lin. ft. of 24" R.C.P. @ 0.10% grade.

SEWER RELOCATIONS AND ABANDONMENT OF EXISTING SEWERS
N. D. P. ADMINISTRATION CENTER
KANS A-5-3 SHEET 4 OF 9



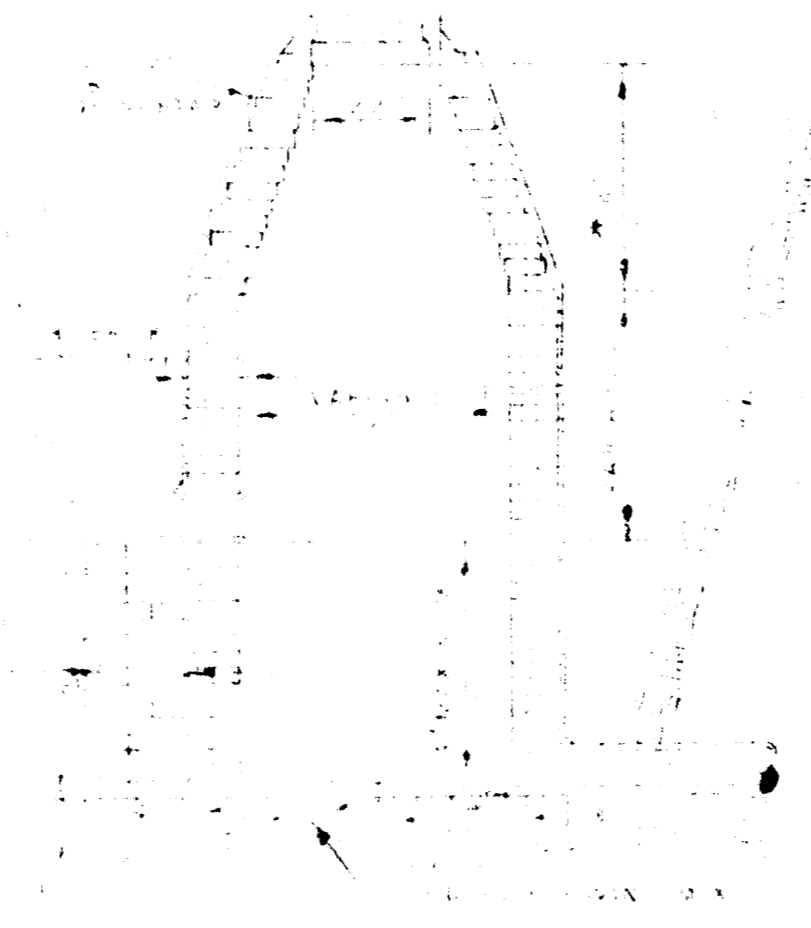




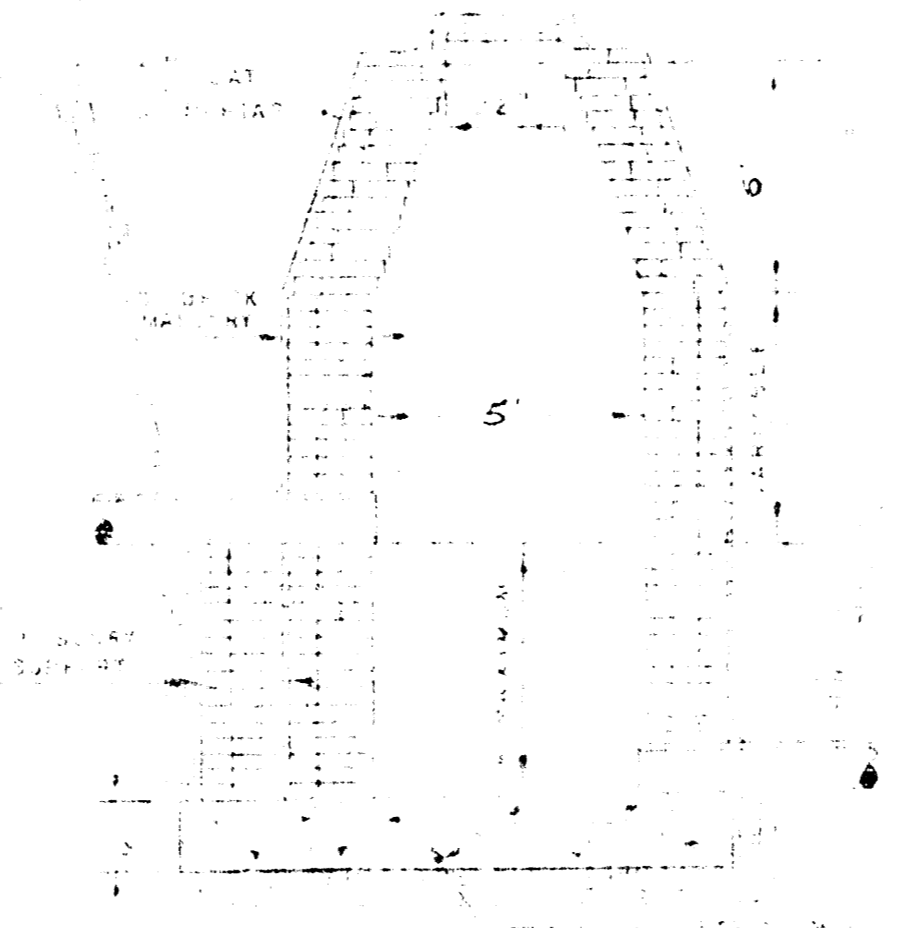
4' x 4' DROP MANHOLE TYPE "A"



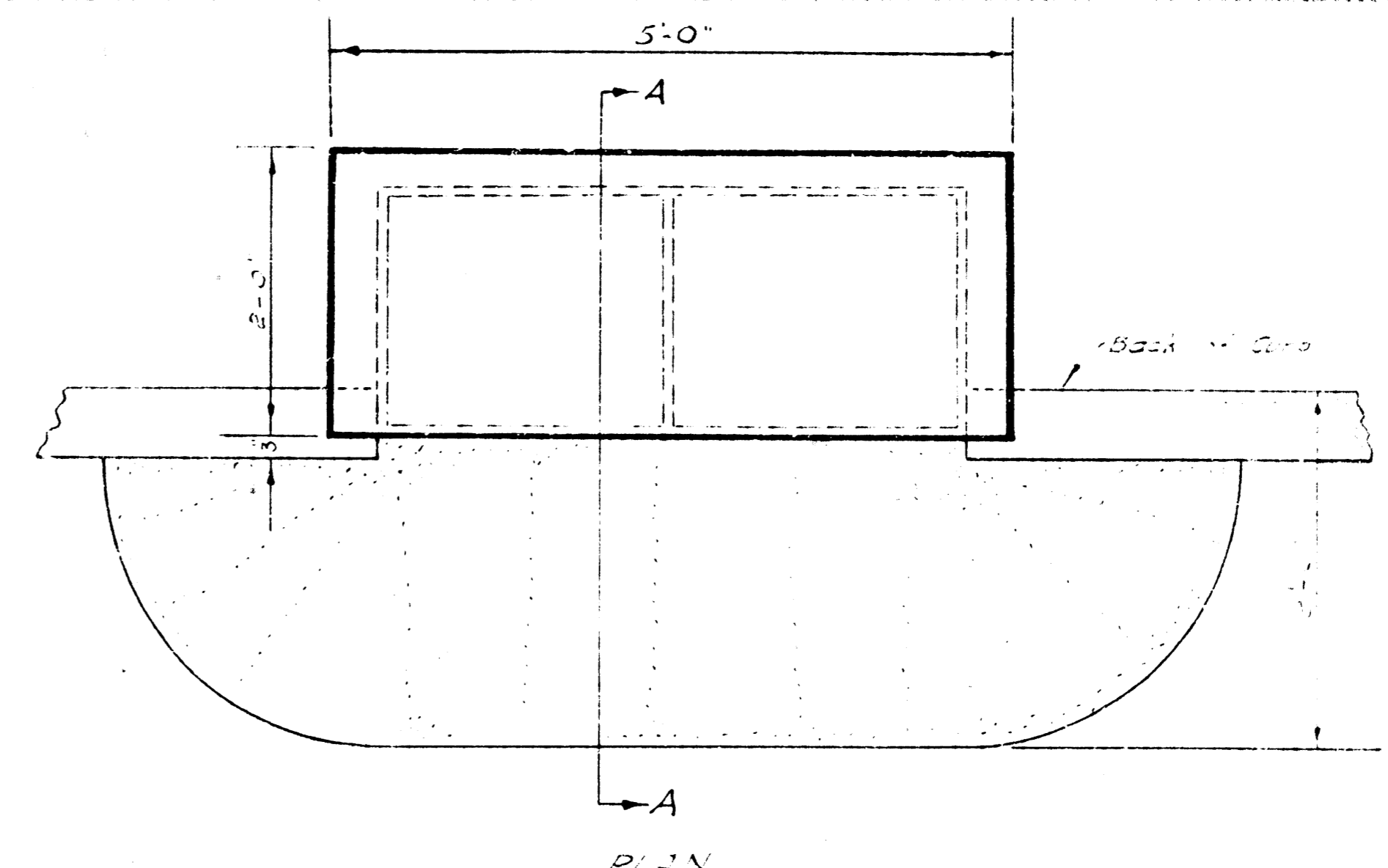
STANDARD MANHOLE TYPE "B"



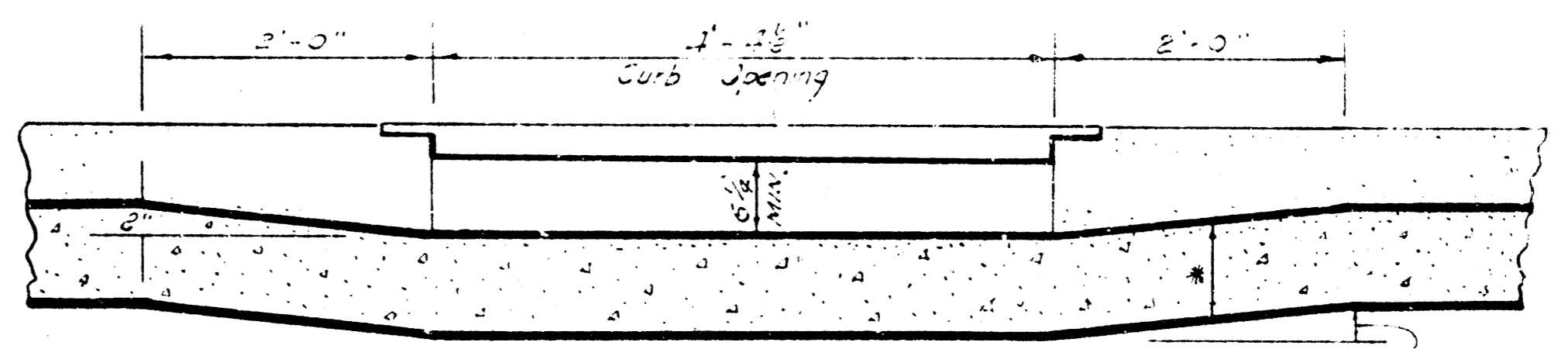
DROP MANHOLE TYPE "A"



DROP MANHOLE TYPE "B"

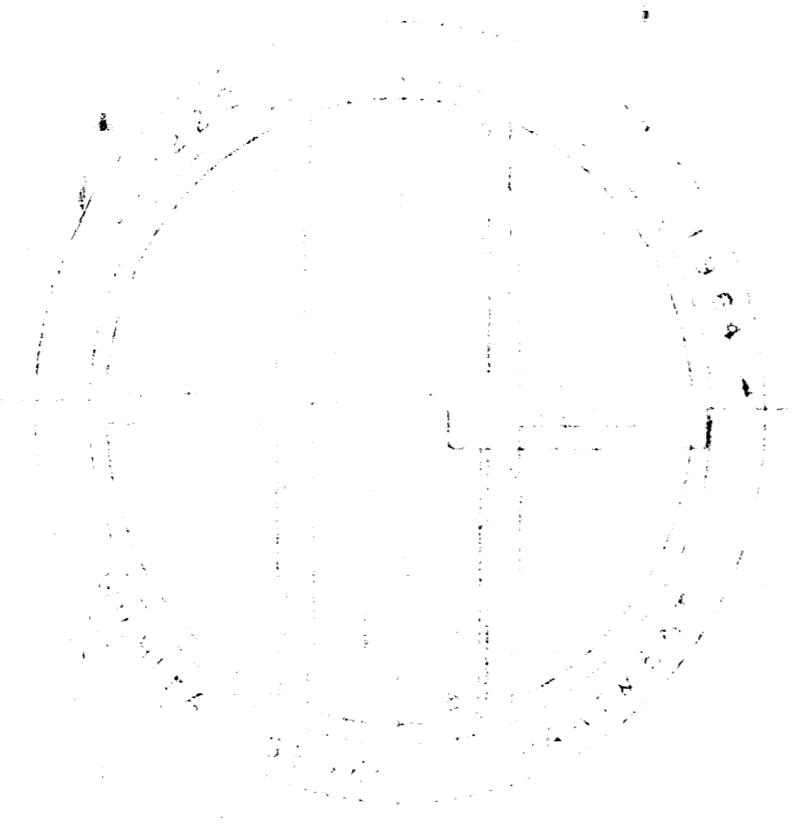


PLAN

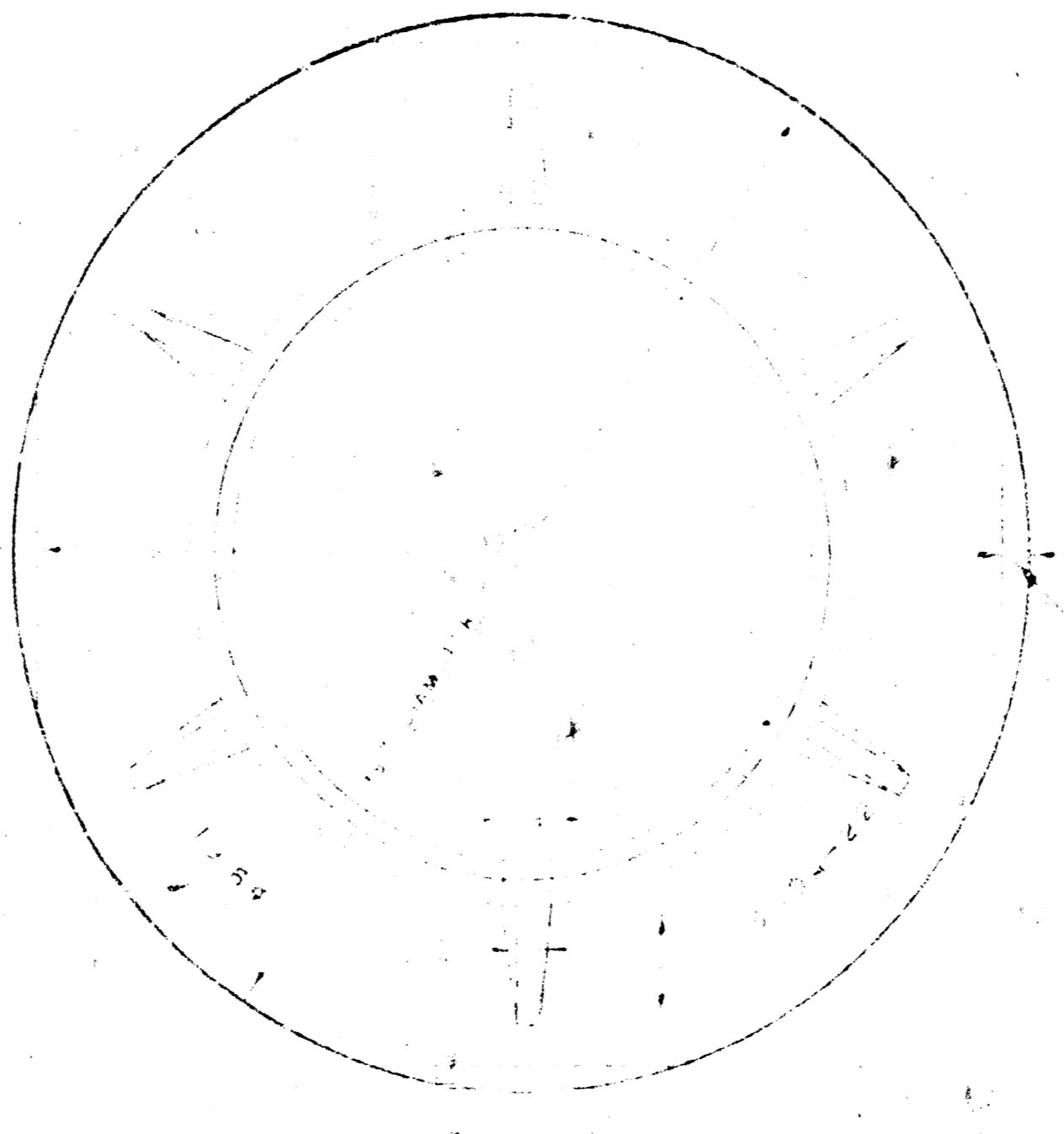


ELEVATION

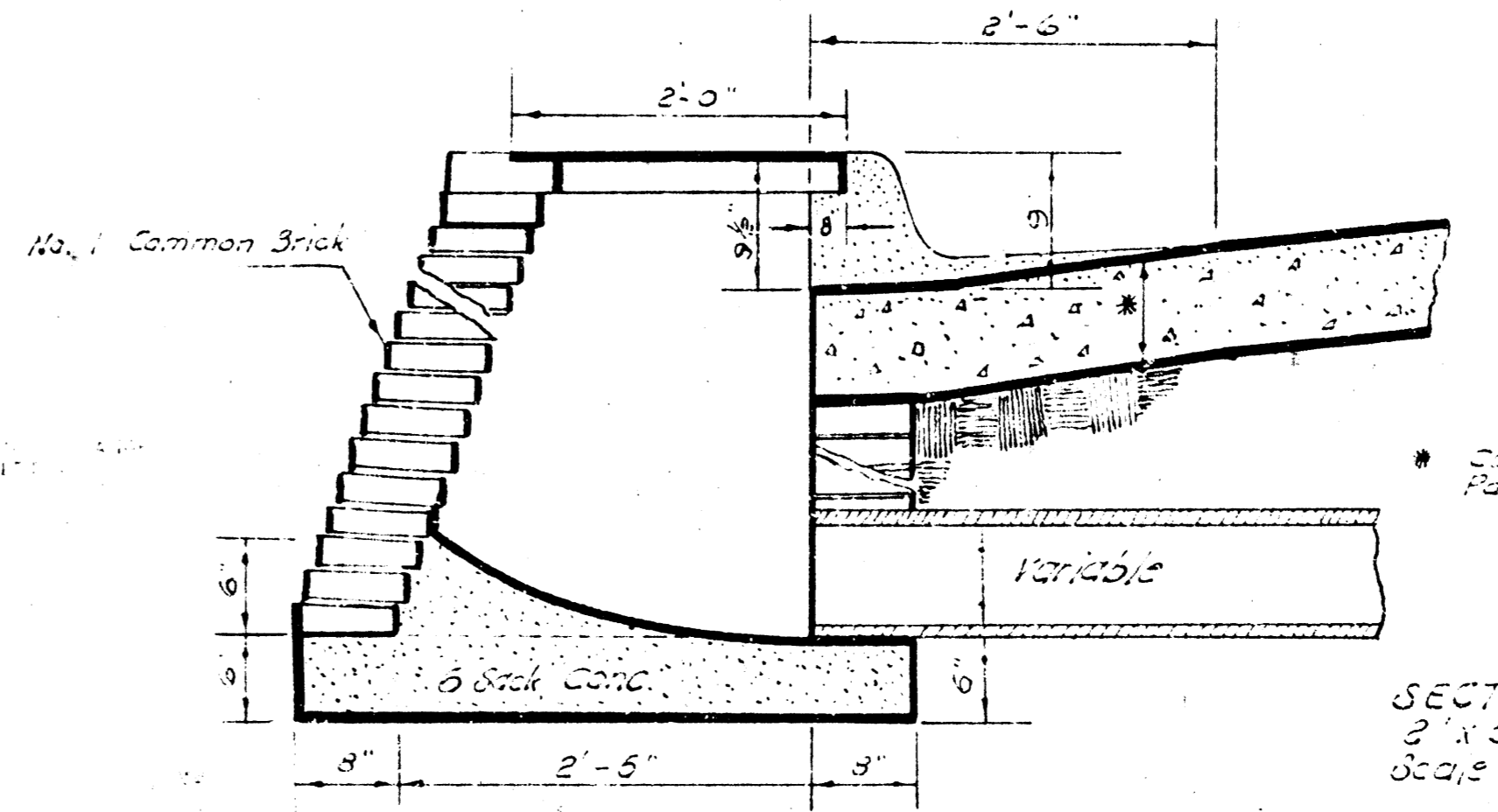
Dimensions to be checked to match on drawings in placement



MANHOLE COVER

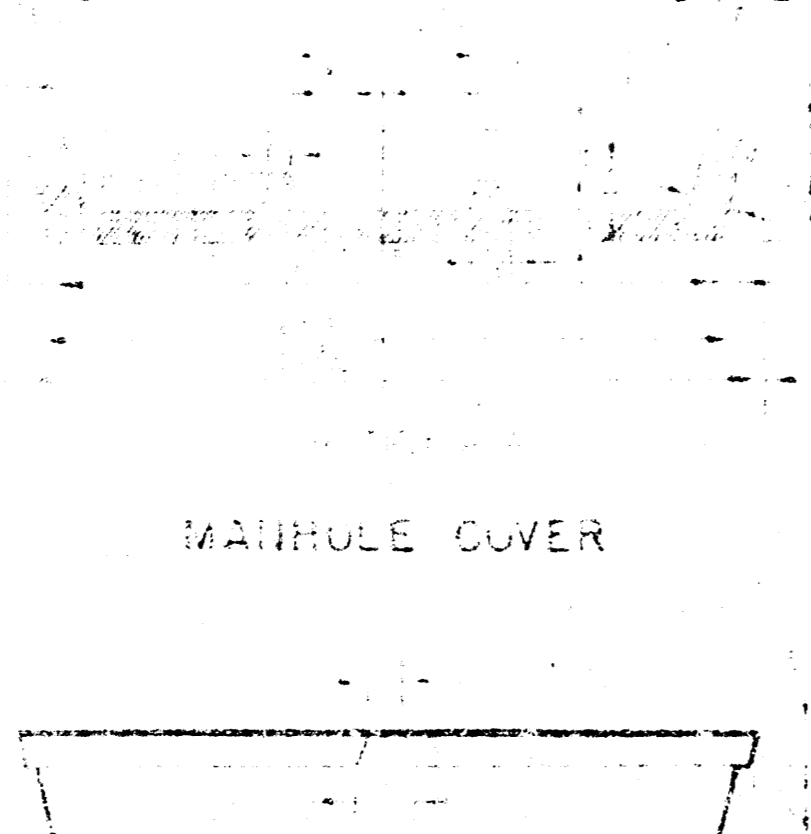


MANHOLE RING

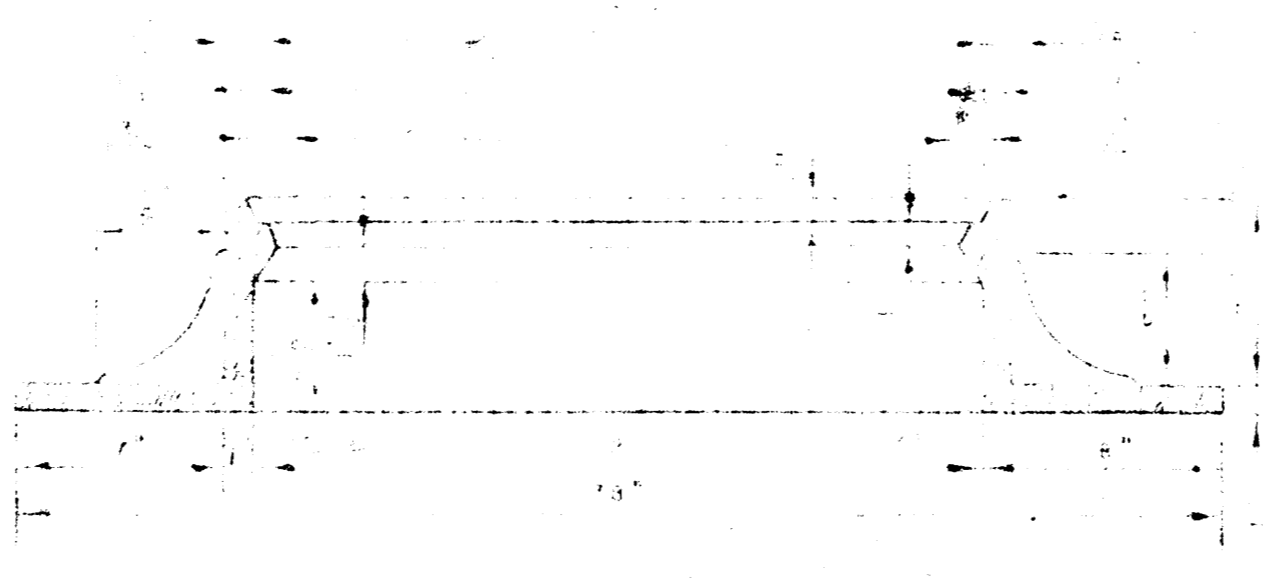


SECTION A-A
2'-0" x 2'-5" Manhole
Scale: 1/2" = 1'-0"

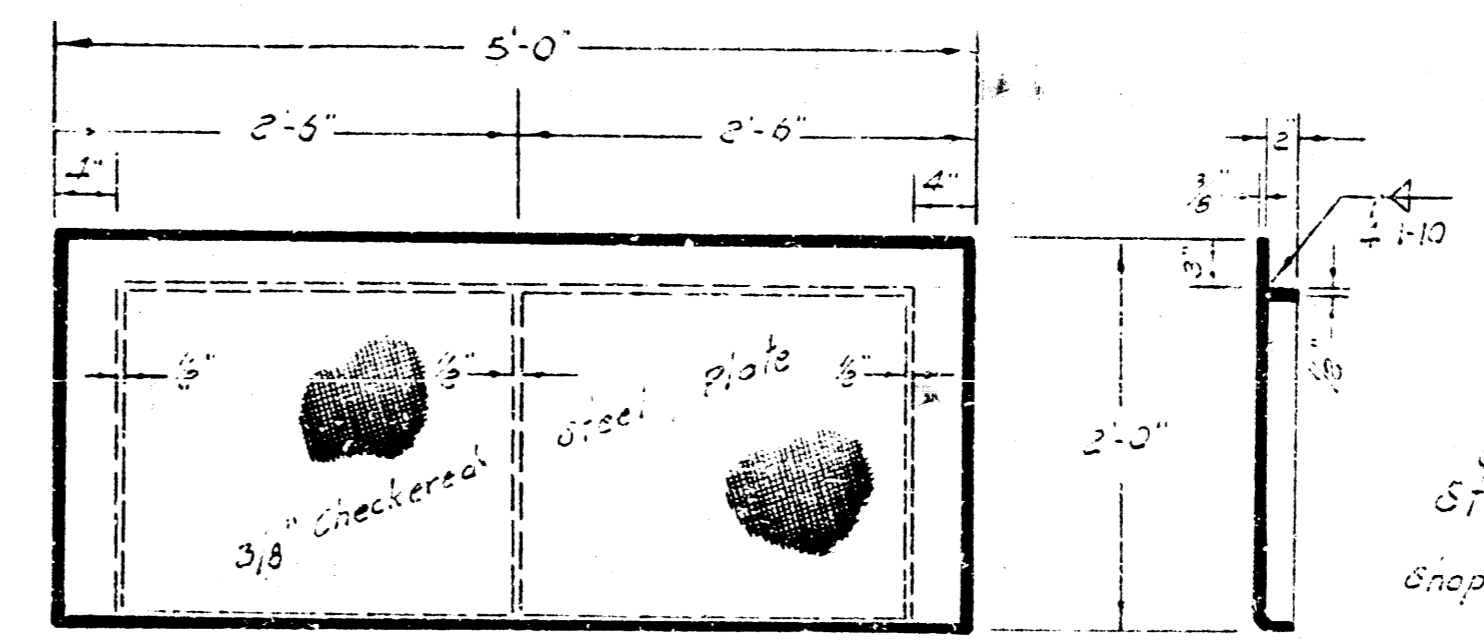
Curb and gutter of pavement thickness



MANHOLE COVER



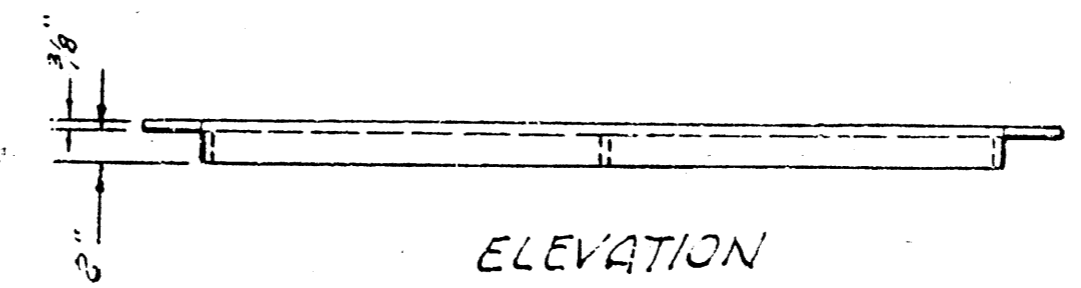
MANHOLE RING



PLAN

SECTION

CITY OF WICHITA
Steel Inlet 205"
Weight = 205 #
Shop Paint - Black Heavy
Scale: 1/2" = 1'-0"



ELEVATION

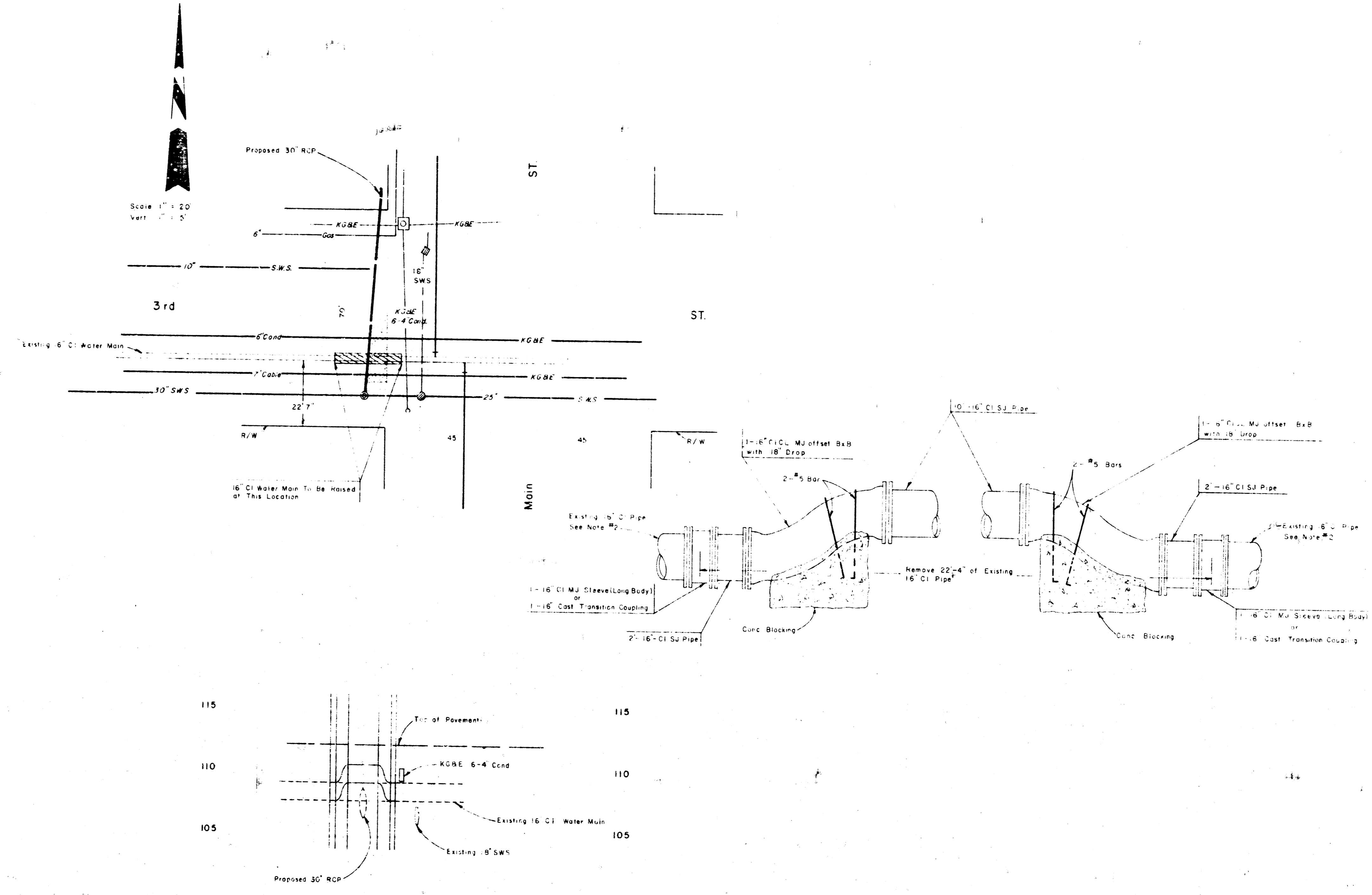
NOTE ON INVERTS OF COVER AND THE 1/4" RISE AND SEAT OF RING TO BE MACHINE FIT.

MANHOLE COVER

SEWER RELOCATIONS AND
ABANDONMENT OF EXISTING SEWERS
N. D. P. ADMINISTRATION CENTER
KANS. A-5-3 SHEET 8 OF 9

NOTES

1. All materials to be furnished and installed by the contractor. The water Dept will shut down the main.
2. The contractor will remove the existing 16" cast iron pipe, leaving a health cut at right angles to the axis of the pipe at each end.
3. All cast iron pipe and fittings to be wrapped in Polyethylene film 6 mil sand enclosed.
4. Concrete thrust blocks will be shown approximately 24" or 30" of distance from pipe.
5. Cast iron pipe will be cut to exact length or spool length. Cut from the same diameter pipe will be used to remove dry block in the new pipe and fittings.
6. All backfill to be compacted to original density, with 3/4" depth fill below subgrade of paving where applicable.



WATER RELOCATIONS
 N. D. P. ADMINISTRATION CENTER
 KANS. A-5-3 SHEET 9 OF 9

14 5 4 11