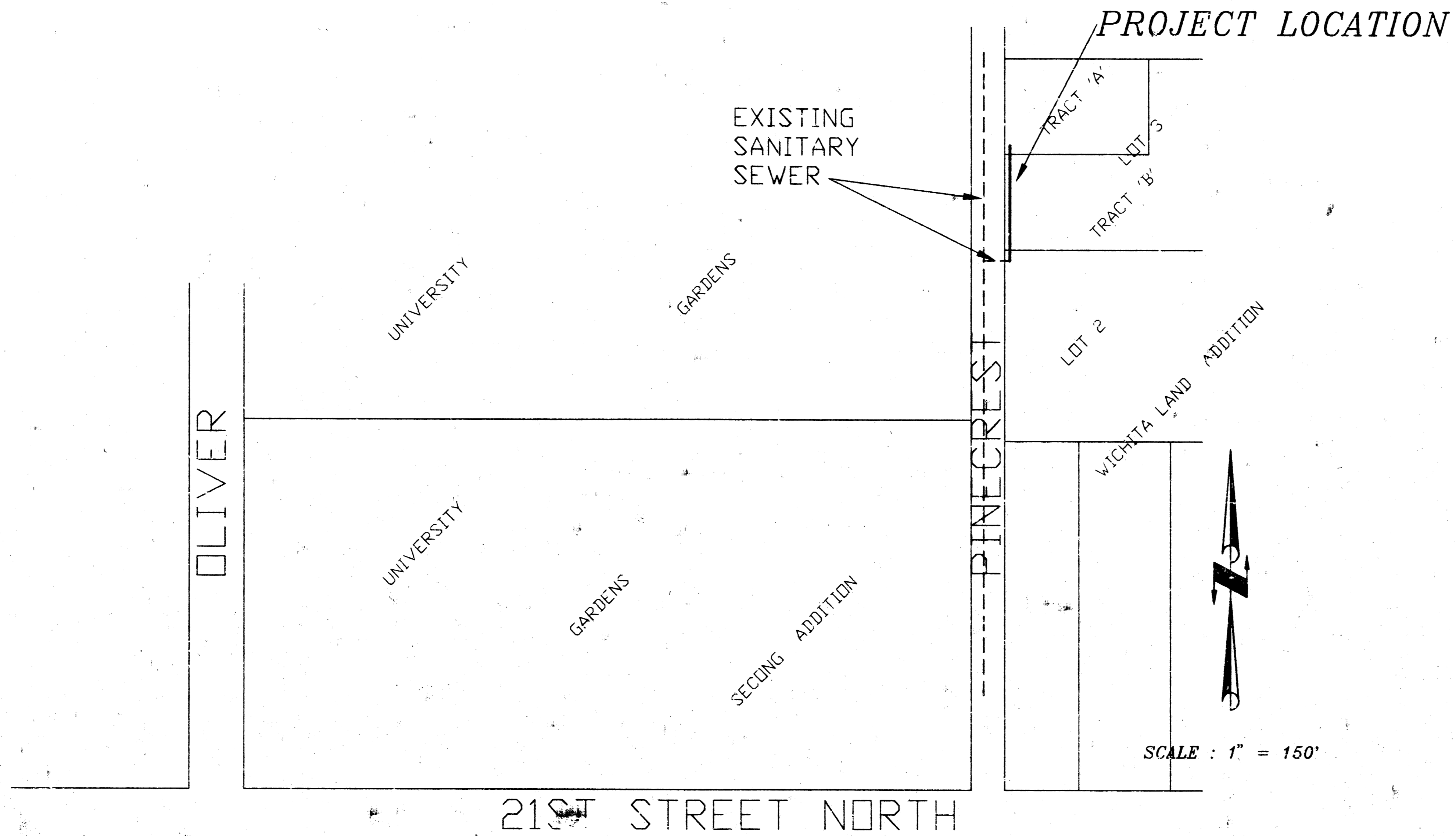


CITY OF WICHITA, KANSAS

SANITARY SEWER IMPROVEMENTS

TO SERVE TRACT 'A', LOT 3, WICHITA LAND ADDITION

PRIVATE PROJECT NO.: 419PPS (607861)



LOCATION MAP

INDEX:

SHEET	1	TITLE SHEET
SHEET	2	PLAN-PROFILE SHEET

GENERAL NOTES:

- CONTRACTOR WILL BE REQUIRED TO PROVIDE A MINIMUM ADVANCE NOTICE OF TWENTY-FOUR (24) HOURS TO UTILITY COMPANIES PRIOR TO STARTING ANY EXCAVATION.
- ALL WORK SHALL BE INSTALLED IN ACCORDANCE WITH CITY OF WICHITA, KANSAS STANDARD SPECIFICATIONS.
- EXISTING UTILITIES AND THEIR LOCATIONS, AS SHOWN ON THE PLANS, REPRESENT THE BEST INFORMATION OBTAINABLE FOR DESIGN. LOCATION INFORMATION HAS BEEN OBTAINED FROM THE VARIOUS UTILITY COMPANIES AND IS EITHER FROM COMPANY RECORD DRAWINGS OR COMPANY PROVIDED FIELD LOCATIONS. THE CONTRACTOR WILL BE REQUIRED TO WORK AROUND EXISTING UTILITIES WITHIN THE RIGHT-OF-WAY WHICH DO NOT CONFLICT WITH PROPOSED CONSTRUCTION.
- RUBBLE FROM THE REMOVAL OF MISCELLANEOUS STRUCTURES AND EXCESS EXCAVATION WHICH IS TO BE WASTED SHALL BE DISPOSED OF ON SITES TO BE PROVIDED BY THE CONTRACTOR. THESE SITES SHALL BE APPROVED BY THE ENGINEER AS TO SUITABILITY, APPEARANCE AND SITE LOCATION. LOCATIONS THAT, IN THE OPINION OF THE ENGINEER, WILL LEAVE UNSIGHTLY APPEARANCE WILL NOT BE APPROVED.
- THE CONTRACTOR SHALL BE RESPONSIBLE FOR PRESERVING PROPERTY IRONS. THE CONTRACTOR WILL BE REQUIRED TO RE-ESTABLISH ANY PROPERTY IRONS WHICH ARE DAMAGED OR DESTROYED BY HIS CONSTRUCTION OPERATIONS. SUCH IRONS SHALL BE RE-ESTABLISHED BY A LICENSED LAND SURVEYOR OR IN ACCORDANCE WITH STATE LAW.
- GRASS AREAS DISTURBED BY CONSTRUCTION OR STORAGE OF MATERIALS SHALL BE REPLANTED EITHER BY SEEDING OR SODDING WITH THE SAME TYPE OF GRASS AS WAS EXISTING PRIOR TO CONSTRUCTION. SEE "SPECIAL PROVISIONS" IN THE STANDARD SPECIFICATION NO. 14638 FOR SEEDING AND SODDING OF COOL SEASON AND WARM SEASON GRASSES.
- CONSTRUCTION STAKING AND INSPECTION SHALL BE PROVIDED BY MUNICIPAL ENGINEERS. CO-TRACTOR SHALL NOTIFY MUNICIPAL ENGINEERS (516-262-3842) ENGINEERS. AT LEAST 48 HOURS IN ADVANCE OF BEGINNING OF CONSTRUCTION ACTIVITY SO THAT CONSTRUCTION STAKING CAN BE SCHEDULED.



VRH
10-11-93

NOTE TO CONTRACTOR

INSPECTION AND TESTING FOR THIS PROJECT IS TO BE PROVIDED BY A LICENSED CONSULTING ENGINEERING FIRM UNDER CONTRACT WITH THE OWNER/DEVELOPER. SAID INSPECTION TO BE IN ACCORDANCE WITH THE CITY OF WICHITA STANDARD ENGINEERING PRACTICES AND CERTIFIED BY A LICENSED PROFESSIONAL ENGINEER. NO WORK SHALL BE PERFORMED IN DEDICATED EASEMENTS OR PUBLIC RIGHT-OF-WAY BY THE CONTRACTOR WITHOUT SUCH INSPECTION NOR SHALL ANY WORK BE COMMENCED IN DEDICATED EASEMENTS OR PUBLIC RIGHT OF WAY WITHOUT WRITTEN AUTHORIZATION BY THE CITY ENGINEER.

APPROVED AS NOTED

BY CITY ENGINEER OF WICHITA

Sanitary Sewers	VRH	10/11/93
Storm Sewers		
Driveway Approaches		
Water Mains		
Paving		

*Booked 1-17-95
OKB
From As-Builts*

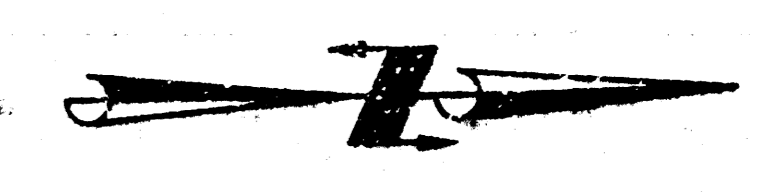
MICHAEL E. LINDEBAK, P.E., CITY ENGINEER

SCALE: AS SHOWN	APPROVED:	DRAWN BY: F.A.
DATE: 9-28-93	B.K.	CHECKED: B.K.
PROJECT NO.: 92-25(4E)		SHEET NO.: 1 OF 2

MUNICIPAL ENGINEERS
254-LAURA, SUITE 201
WICHITA, KANSAS 67211
516-262-3842

AS BUILT PLANS

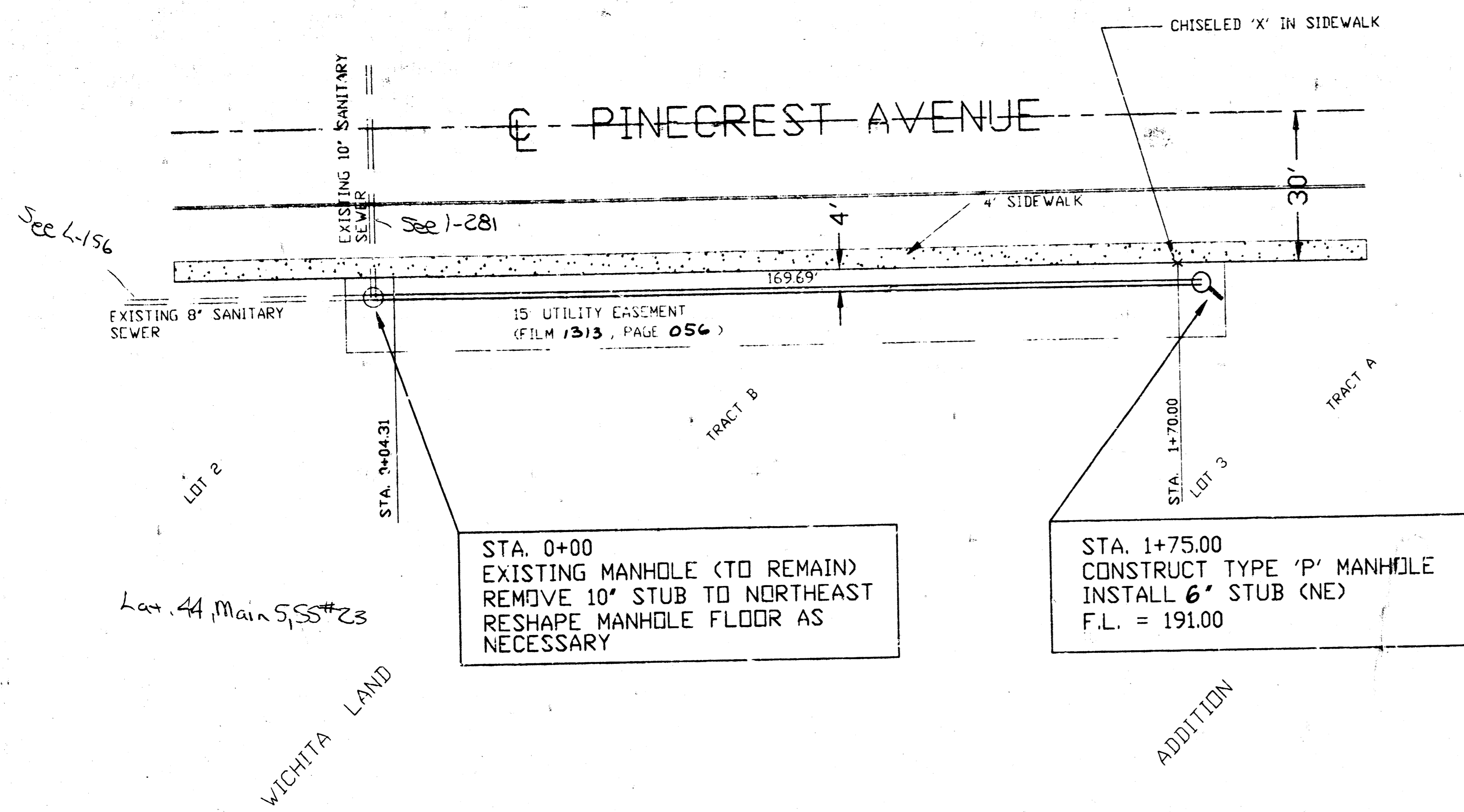
419 PPS



SCALE:

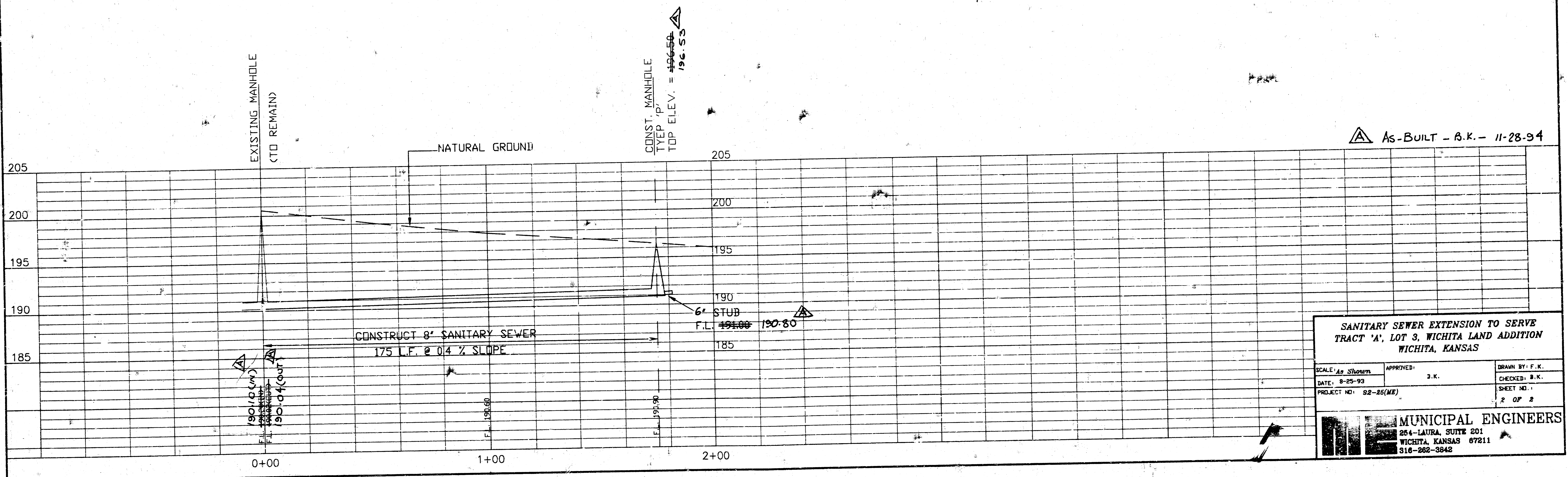
PLAN : 1" = 20'
PROFILE : 1" = 20' (H)
1" = 5' (V)

BENCH MARK: SQUARE CUT ON TOP OF CURB, OPPOSITE
FIRE HYDRANT LOCATED AT THE NORTHWEST CORNER OF LOT
3, WICHITA LAND ADDITION.
ELEV. = 191.82



STA. 0+00
EXISTING MANHOLE (TO REMAIN)
REMOVE 10" STUB TO NORTHEAST
RESHAPE MANHOLE FLOOR AS
NECESSARY

STA. 1+75.00
CONSTRUCT TYPE 'P' MANHOLE
INSTALL 6" STUB (NE)
F.L. = 191.00



AS-BUILT - B.K. - 11-28-94

SANITARY SEWER EXTENSION TO SERVE
TRACT 'A', LOT 3, WICHITA LAND ADDITION
WICHITA, KANSAS

SCALE: As Shown	APPROVED: B.K.	DRAWN BY: F.K.
DATE: 8-25-93	CHECKED: B.K.	SHEET NO.:
PROJECT NO: 92-25(MB)		2 OF 2

MUNICIPAL ENGINEERS
254-LAURA, SUITE 201
WICHITA, KANSAS 67211
316-262-3842