

AS-BUILT PLAN FOR
Sanitary Sewer Manhole
for
The Inn at Willowbend
1334 PPS(607861)
Neil D. Cable, City Engineer
September 2003

THE INN AT WILLOWBEND WICHITA, KANSAS

TO ALL PARTIES INTERESTED IN TITLE TO THE PREMISES SURVEYED:

Venture Golf Partners II, LLC
Columbian National Title Insurance Company

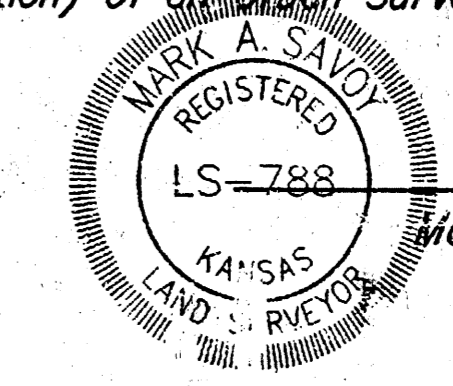
LEGAL DESCRIPTION:

TRACT 1:
Beginning at the N.E. Corner of Lot 6, Block 1, Hi-Tech Industrial Park 2nd Addition, Sedgwick County, Kansas; thence N77°37'15"E, 35.73 feet; thence S00°49'09"E, 188.99 feet to a point on a curve to the left; thence along said curve an arc distance of 187.24 feet, said curve having a central angle of 143°02'28", a radius of 75 feet and a long chord of 142.27 feet bearing S49°53'27"W; thence S89°10'51"W, 80.94 feet; thence N00°49'09"W, 240.00 feet to a point on the North line of said addition; thence N77°37'15"E, 159.27 feet to the point of beginning.

TRACT 2:
Beginning at the N.W. Corner of Lot 6, Block 1, Hi-Tech Industrial Park 2nd Addition, Wichita, Sedgwick County, Kansas; thence N77°37'15"E, along the North line of said Lot 6, 138.73 feet; thence S00°49'09"E, 240.00 feet; thence S89°10'51"W, 135.91 feet to a point on the West line of said Lot 6, 212.20 feet South of said N.W. Corner; thence North, along said West line, 212.20 feet to the point of beginning.

State of Kansas)
Sedgwick County) SS

We, Savoy Company, P.A., Surveyors in aforesaid County and State, do hereby certify that we did on this 9th day of January, 2002, survey the above described property and the accompanying plat of survey on which it is based is made in accordance with "Minimum Standard Detail Requirements for ALTA/ACSM Land Title Surveys," as adopted by American Land Title Association, American Congress on Surveying & Mapping and National Society of Professional Surveyors in 1999 and includes items 1, 2, 4, 7a, 8, 9, 10 and 11a, of Table "A" thereof, and pursuant to the Accuracy Standards (as adopted by ALTA and ACSM in effect on the date of this certification) of an Urban Survey.



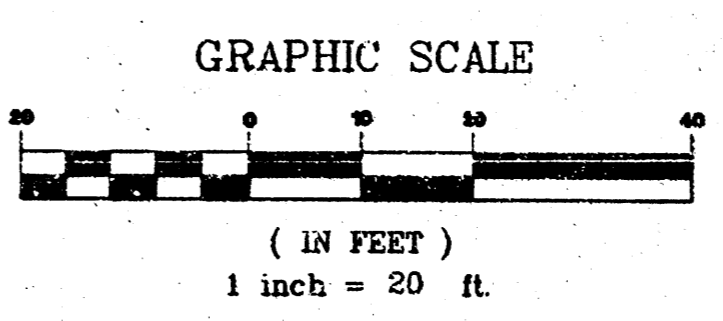
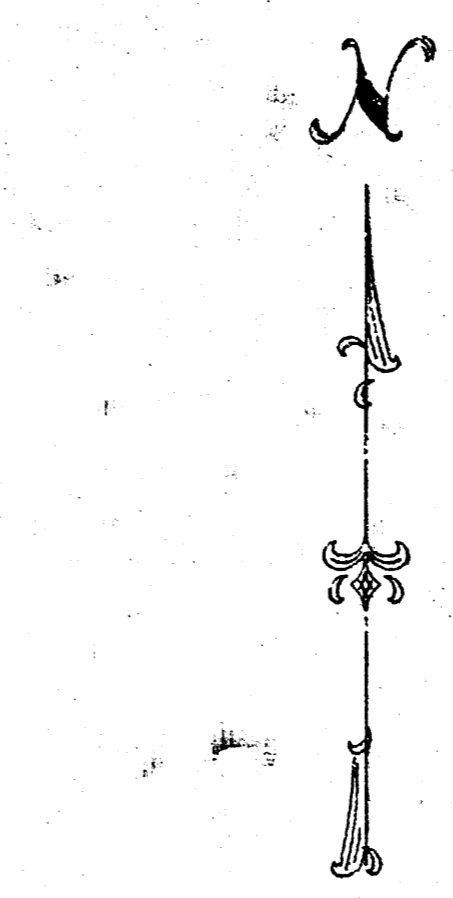
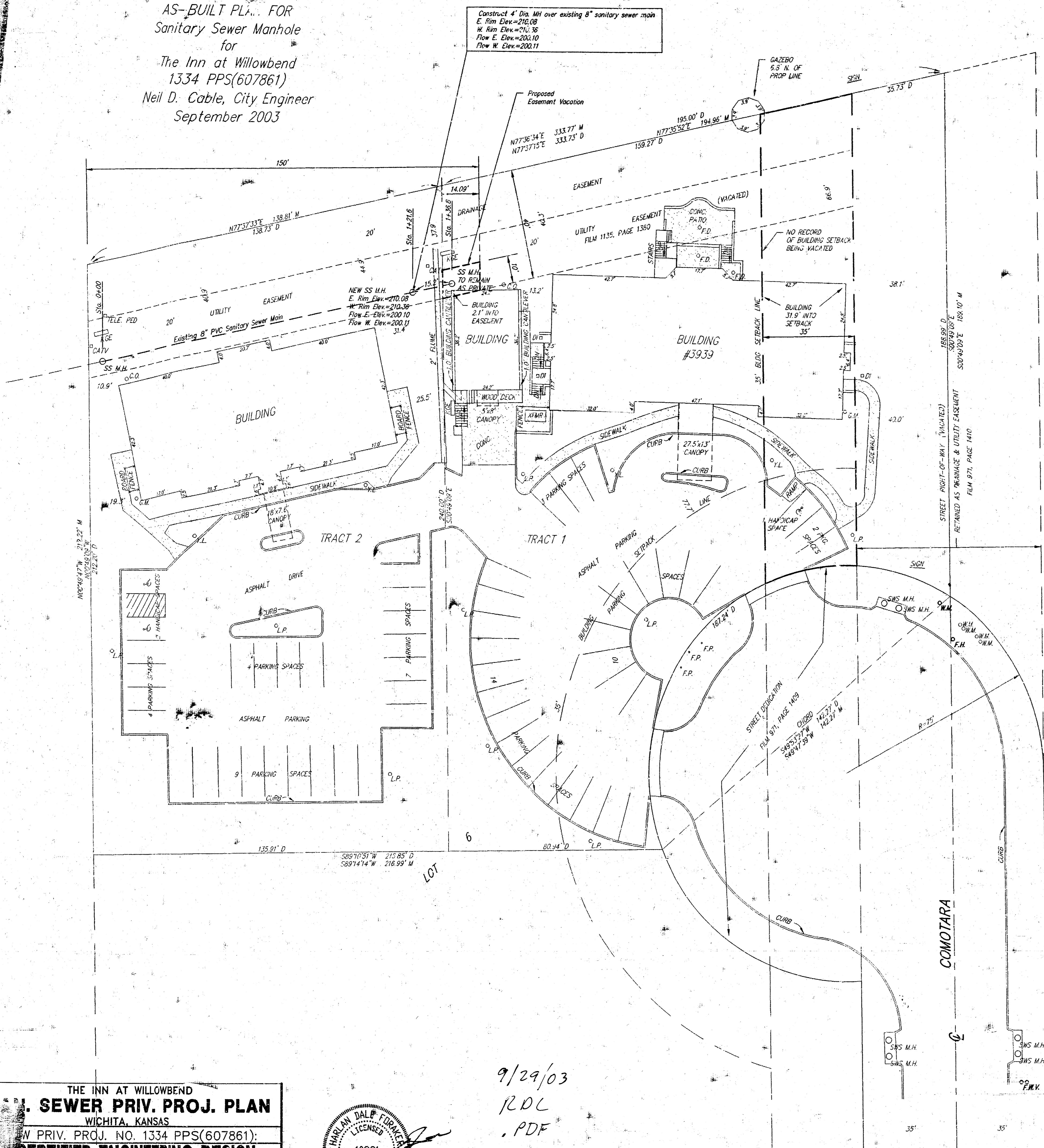
NOTES:

- 1) SURVEY DATE: January 9, 2002.
- 2) RECORD INFORMATION: Title Commitment No. 01-27977, provided by Columbian Title
- 3) AREA: 70,021.77 Sq. Ft. ± / 1.61 Acres ±

NOTE:

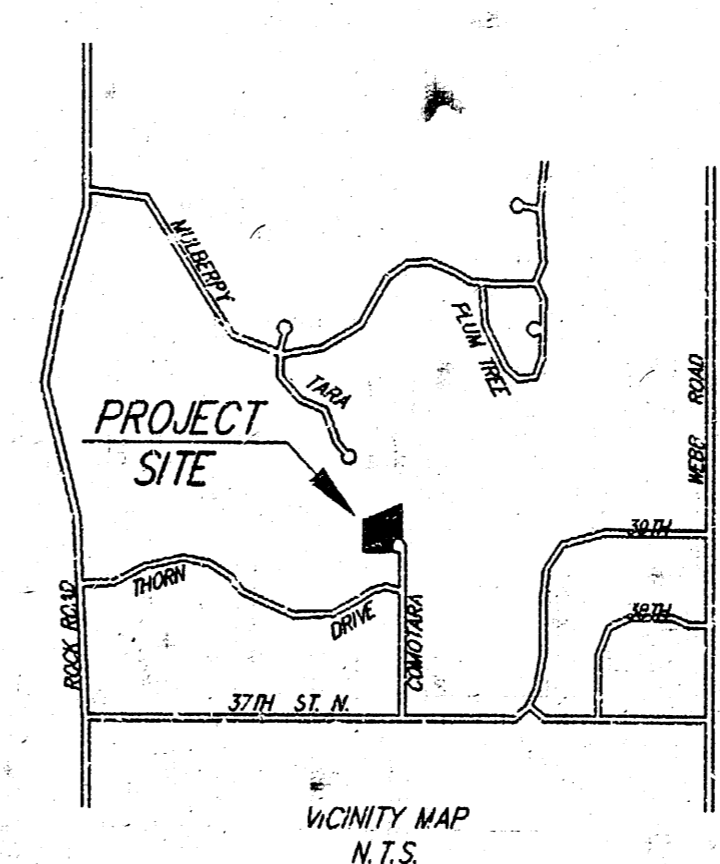
Location of all utilities shown on this drawing, reflect the best information available, consisting of field observation only. Before completing any final design or beginning any excavation on this site, contact the appropriate utility companies for verification of the utility locations.

Kansas One-Call 687-2470

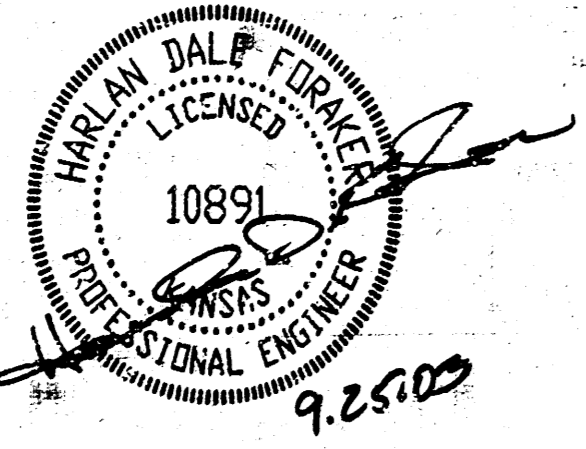


- = 5/8" REBAR W/MID KANSAS ENGINEERING CAP (FOUND)
- = 1/2" REBAR W/MID KANSAS ENGINEERING CAP (FOUND)
- = 3/4" IRON PIPE (FOUND)
- = 1/2" REBAR (FOUND)
- = NAIL (FOUND)

- LEGEND
- TELE. PED TELEPHONE PEDESTAL
 - BOX ELECTRIC BOX
 - TRANS. ELECTRIC TRANSFORMER
 - G.M. GAS METER
 - W.M. WATER METER
 - W.V. WATER VALVE
 - F.H. FIRE HYDRANT
 - C.O. CLEAN OUT
 - L.P. LIGHT POLE
 - P.P. POWER POLE
 - H.L.P. HIGH LINE POLE
 - DA. DUY ANCHOR
 - SIGN SIGN
 - F.P. FLAG POLE
 - F.D. FLOOR DRAIN
 - D.I. DROP INLET
 - SWS M.H. STORM WATER SEWER MANHOLE
 - SS M.H. SANITARY SEWER MANHOLE



9/29/03
RDC
.PDF



AS-BUILT PLAN

THE INN AT WILLOWBEND
SEWER PRIV. PROJ. PLAN
WICHITA, KANSAS
SEWER PRIV. PROJ. NO. 1334 PPS(607861):
CERTIFIED ENGINEERING DESIGN
810 WEST DOUGLAS, SUITE C
WICHITA, KANSAS 67203-6105
PH. (316)262-8808 FAX (316)262-1669

DESIGNED: HDF	SCALE: 1"=20'	SHEET
DRAWN: HDF	DATE: 9-24-03	1
CHECKED: HDF	CED FILE: CED-1XXX	TOTAL 1

Project No. 03AA01284 C
W.B. Carter
8 January 2003

Savoy Company, P.A.
Land Surveyors
838 S. Emporia, Suite 104, Wichita, KS 67202
www.savoyco.com