

GENERAL NOTES

- THE CONTRACTOR SHALL BE RESPONSIBLE FOR PRESERVING PROPERTY IRONS. THE CONTRACTOR WILL BE REQUIRED TO RE-ESTABLISH ANY PROPERTY IRONS WHICH ARE DAMAGED OR DESTROYED BY HIS CONSTRUCTION OPERATIONS. SUCH IRONS SHALL BE RE-ESTABLISHED BY A LICENSED LAND SURVEYOR IN ACCORDANCE WITH STATE LAWS.
- EXISTING UTILITIES AND THEIR LOCATIONS, AS SHOWN ON THE PLANS REPRESENT THE BEST INFORMATION OBTAINABLE FOR DESIGN. LOCATION INFORMATION HAS BEEN OBTAINED FROM THE VARIOUS UTILITY COMPANIES AND IS EITHER FROM COMPANY RECORD DRAWINGS OR COMPANY PROVIDED FIELD LOCATIONS. THE PLAN LOCATIONS SHOWN ARE NOT GUARANTEED. ADDITIONAL EXISTING UTILITIES MAY ALSO BE ENCOUNTERED.
- CONTRACTOR WILL BE REQUIRED TO PROVIDE A MINIMUM ADVANCE NOTICE OF FORTY-EIGHT (48) HOURS TO UTILITY COMPANIES PRIOR TO STARTING ANY EXCAVATION AS FOLLOWS:

 KANSAS ONE-CALL 1-800-344-7233 or 687-2470 (LOCAL WICHITA)
 THE CONTRACTOR MUST NOTIFY THE FOLLOWING IN CASE OF AN EMERGENCY:
 SOUTHWESTERN BELL TELEPHONE COMPANY 1-800-734-7590
 CABLEVISION 263-2061
 KOAE (GAS & ELECTRIC) 383-8600
 CITY OF WICHITA WATER & SEWER MAINTENANCE 268-4808
 ARKLA GAS COMPANY 946-0096
 CITY OF BEL AIRE (Terry Drafting) 744-2451
- RUBBLE FROM THE REMOVAL OF MISCELLANEOUS STRUCTURES AND EXCESS EXCAVATION WHICH IS TO BE WASTED SHALL BE DISPOSED OF ON SITES TO BE PROVIDED BY THE CONTRACTOR. THESE SITES SHALL BE APPROVED BY THE ENGINEER AS TO SUITABILITY, APPEARANCE AND SITE LOCATION. LOCATIONS THAT, IN THE OPINION OF THE ENGINEER, WILL LEAVE AN UNSIGHTLY APPEARANCE WILL NOT BE APPROVED. ALL DISPOSAL SITES MUST BE APPROVED BY THE KANSAS DEPARTMENT OF HEALTH AND ENVIRONMENT. MATERIAL EITHER STOCKPILED OR DISPOSED OF IN A FLOOD PLAIN WOULD REQUIRE A KANSAS STATE BOARD OF AGRICULTURE PERMIT. ANY MATERIAL DUMPED IN WATERS OF THE UNITED STATES OR WETLANDS IS SUBJECT TO U.S. CORPS OF ENGINEERS PERMITTING REGULATIONS. ANY MATERIAL BURIED OR STOCKPILED BEYOND APPROVED CONSTRUCTION LIMITS WOULD REQUIRE ADDITIONAL ARCHAEOLOGICAL INVESTIGATIONS UNLESS BURIED IN A PREVIOUSLY APPROVED BORROW LOCATION.
- COST OF EXCAVATION, HAULING, AND DUMPING OF EXCESS EXCAVATION SHALL BE SUBSIDIARY TO THE PROJECT.
- A PORTION OF EXCESS EXCAVATED MATERIAL SHALL BE MOUNDING AROUND MANHOLES WHICH EXTEND MORE THAN ONE (1) FOOT ABOVE THE EXISTING GROUND. SUCH MOUNDS SHALL BE CONSTRUCTED WITH A SIX (6) FOOT DIAMETER FLAT TOP WITH 4 TO 1 SIDE SLOPES DOWN TO THE ORIGINAL GROUND. THE ELEVATION OF THE FLAT TOP OF THE MOUND SHALL BE 0.4 FOOT BELOW THE TOP OF THE MANHOLE.
- ALL STUBS AND PLOUGED PIPES SHALL BE LOCATED WITH GREEN PLASTIC TAPE IN THE SAME MANNER AS RISERS.
- PRIOR TO LAYING SEWER LINES USING EXISTING STUBS IN EXISTING MANHOLES, THE CONTRACTOR SHALL EXPOSE AND VERIFY THE ELEVATION, GRADE AND ALIGNMENT OF EXISTING STUBS AND NOTIFY THE ENGINEER OF ANY DEVIATION FROM THE PLAN. WHERE CONNECTION TO AN EXISTING MANHOLE THAT DOES NOT HAVE AN EXISTING STUB OR THE STUB IS UNUSABLE DUE TO ELEVATION GRADE OR ALIGNMENT, THE CONTRACTOR SHALL RESHAPE THE EXISTING MANHOLE INVERT TO PROVIDE SMOOTH FLOW. THE COST OF RESHAPING EXISTING MANHOLE INVERTS IS INCIDENTAL TO THE PROJECT.
- TREES AND SHRUBS IN PUBLIC RIGHT-OF-WAY WHICH ARE IN DIRECT CONFLICT WITH PROPOSED NEW CONSTRUCTION SHALL BE REMOVED BY THE CONTRACTOR WITH THE ENGINEER'S APPROVAL. TREES AND SHRUBS WHICH ARE NOT IN DIRECT CONFLICT WITH PROPOSED NEW CONSTRUCTION SHALL BE SAVED AND PROTECTED FROM DAMAGE.
- ALL DISTURBED AREAS TO BE SEEDED WITH RYE GRASS AT A RATE OF 200 LBS./ACRE WITHIN 10 DAYS OF CONSTRUCTION. CONTRACTOR TO PREPARE GROUND PER CITY SPEC.

SANITARY SEWER PLANS FOR
WILLOW CREEK ADDITION
PHASE 1

AN ADDITION TO
 CITY OF BEL AIRE
 SEDGWICK COUNTY, KANSAS
 DECEMBER 1996

APPROVED AS NOTED
 BY CITY ENGINEER OF WICHITA

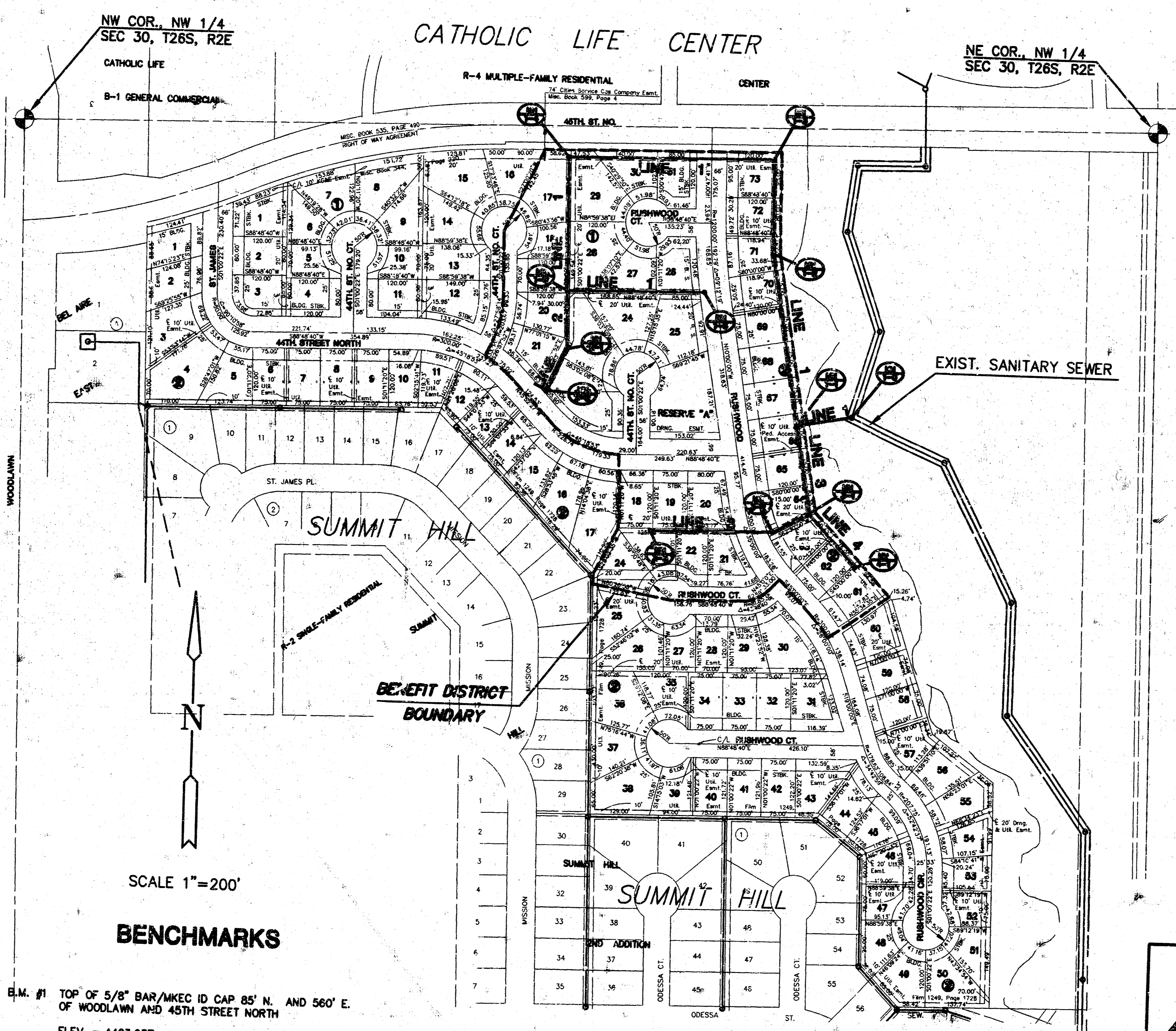
SANITARY SEWERS _____
 STORM SEWERS _____
 DRIVEWAY APPROACHED _____
 WATER MAINS _____
 PAVING _____

NOTE TO CONTRACTOR

INSPECTION AND TESTING FOR THIS PROJECT IS TO BE PROVIDED BY A LICENSED CONSULTING ENGINEERING FIRM UNDER CONTRACT WITH THE OWNER/DEVELOPER. SAID INSPECTION TO BE IN ACCORDANCE WITH THE CITY OF WICHITA STANDARD CONSTRUCTION ENGINEERING PRACTICES AND CERTIFIED BY A LICENSED PROFESSIONAL ENGINEER. NO WORK SHALL BE PERFORMED IN DEDICATED EASEMENTS OR THE PUBLIC RIGHT-OF-WAY BY THE CONTRACTOR WITHOUT SUCH INSPECTION NOR SHALL ANY WORK BE COMMENCED IN DEDICATED EASEMENTS OR PUBLIC RIGHT-OF-WAY WITHOUT WRITTEN AUTHORIZATION BY THE CITY ENGINEER.

INDEX TO DRAWINGS

SHEET NO.	DESCRIPTION
1	TITLE SHEET
2-3	LINE 1
4	LINE 1 & LINE 2
5	LINE 3 & LINE 4
6	MANHOLE DETAILS
7	FINAL PLAT



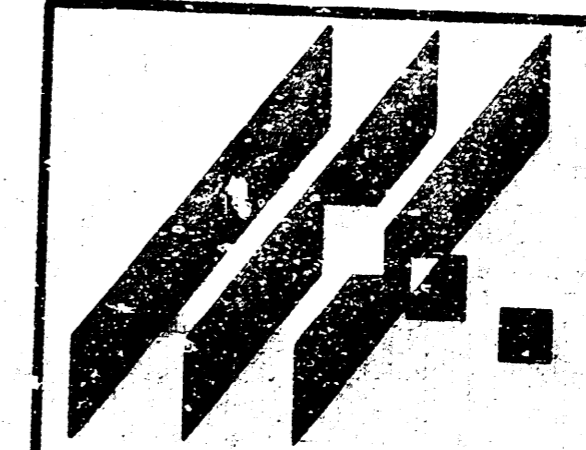
SCALE 1"=200'

BENCHMARKS

B.M. #1 TOP OF 5/8" BAR/MKEC ID CAP 85' N. AND 560' E. OF WOODLAWN AND 45TH STREET NORTH
 ELEV. = 1403.937

NOTE:
 WATER LINE VALVES TO BE OPERATED BY CONTRACTOR ONLY IF WATER INSPECTOR IS ON SITE.

AS BUILT: SEPT. 18, 1997
CITY OF WICHITA
 PRIVATE PROJECT NO. 715PPS (607861)

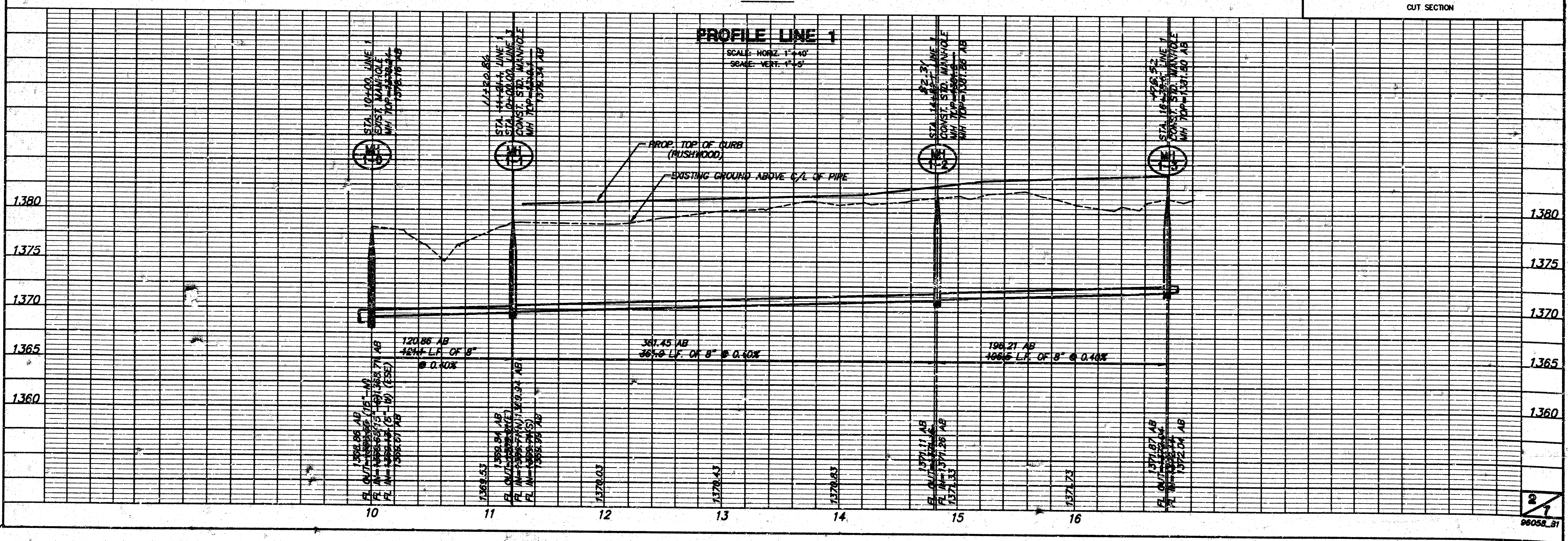
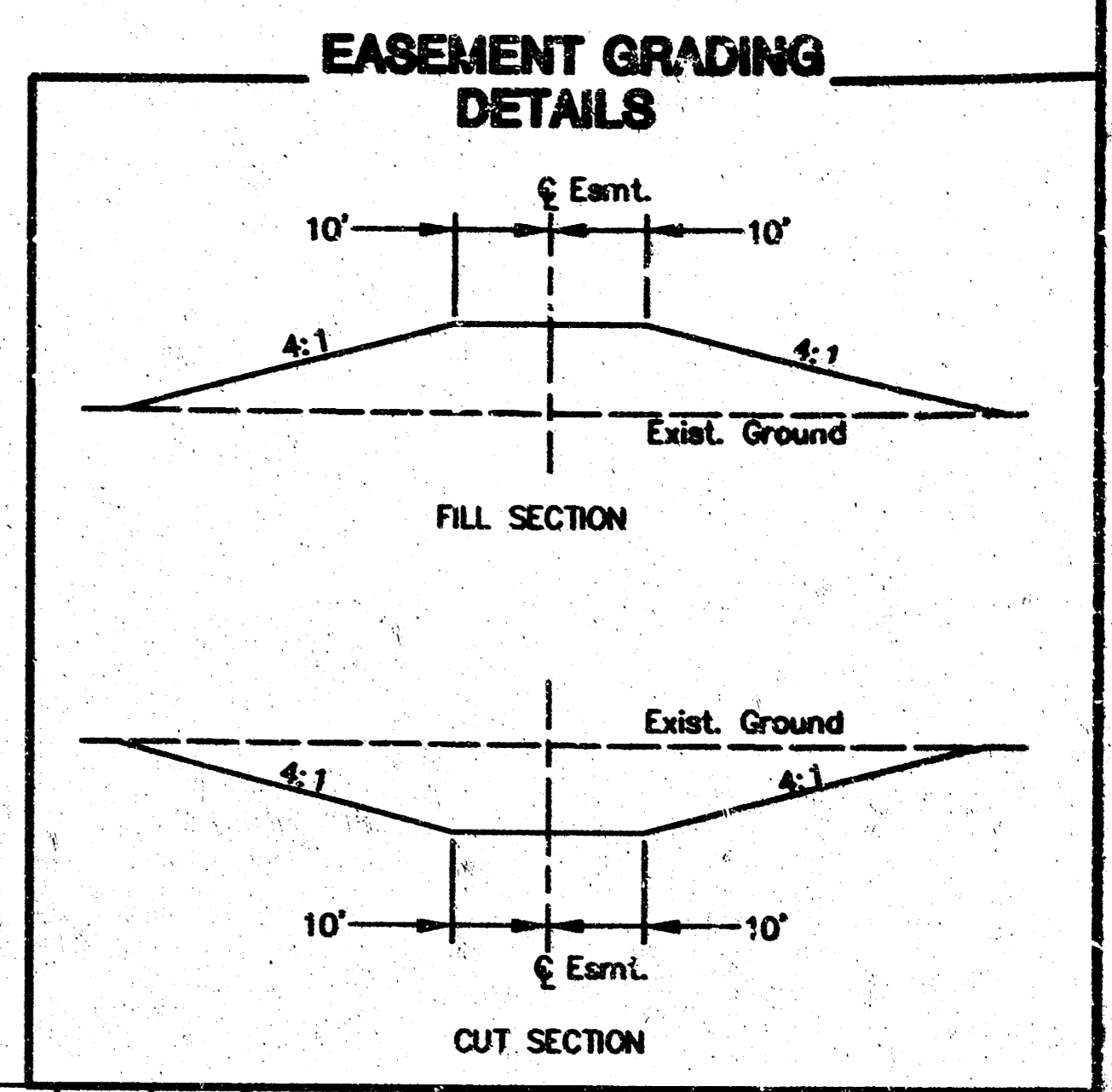
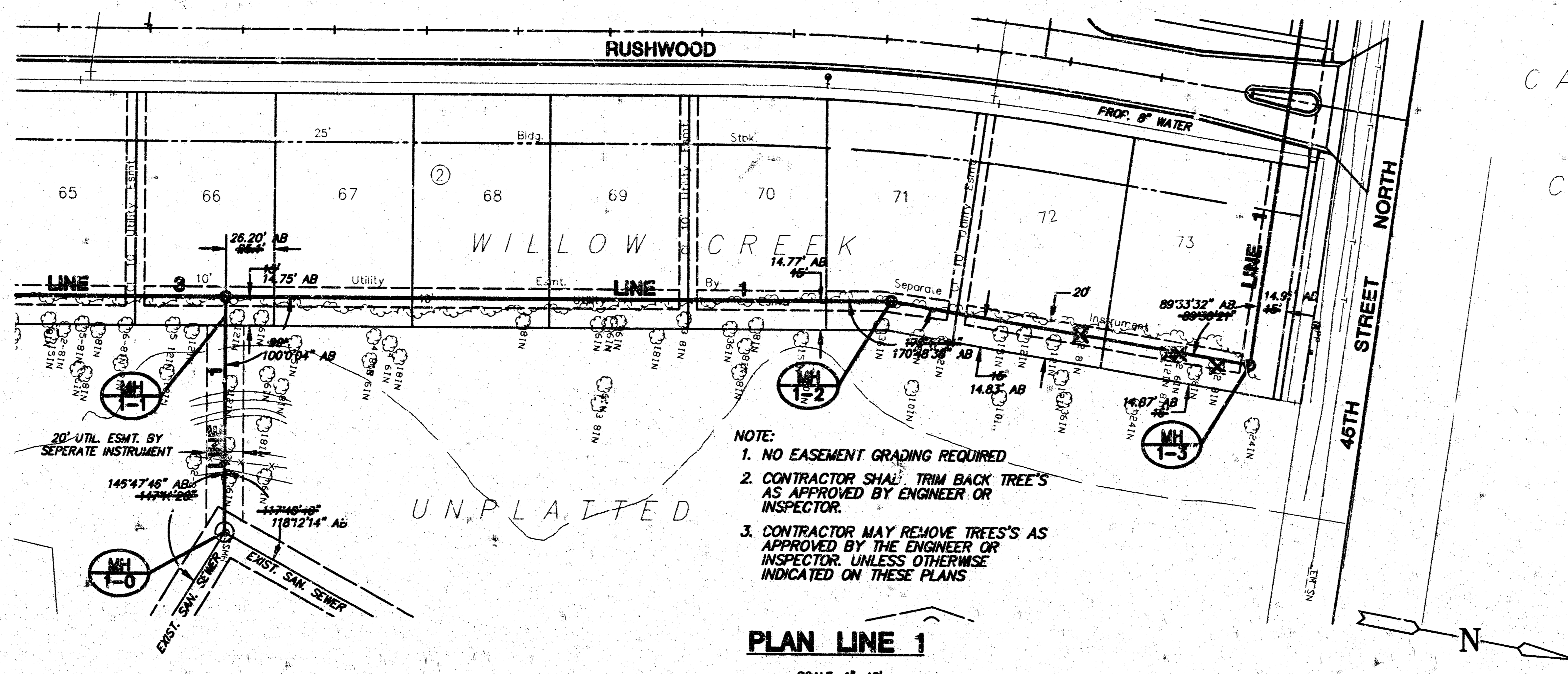


MID-KANSAS ENGINEERING CONSULTANTS, INC.
 411 N WEBB ROAD
 WICHITA, KS. 67206
 316-684-9600

WILLOW CREEK ADDITION - PHASE 1		
PROJECT NAME		
SANITARY SEWER PLANS		
SHEET TITLE		
DESIGN BY: CJA	DRAWN BY: KKL/BDM	CHECKED BY: CJA/DSS
DATE: JAN. 1997	ISS. NO.: 36056_BT	SHEET/OF: 1 / 7

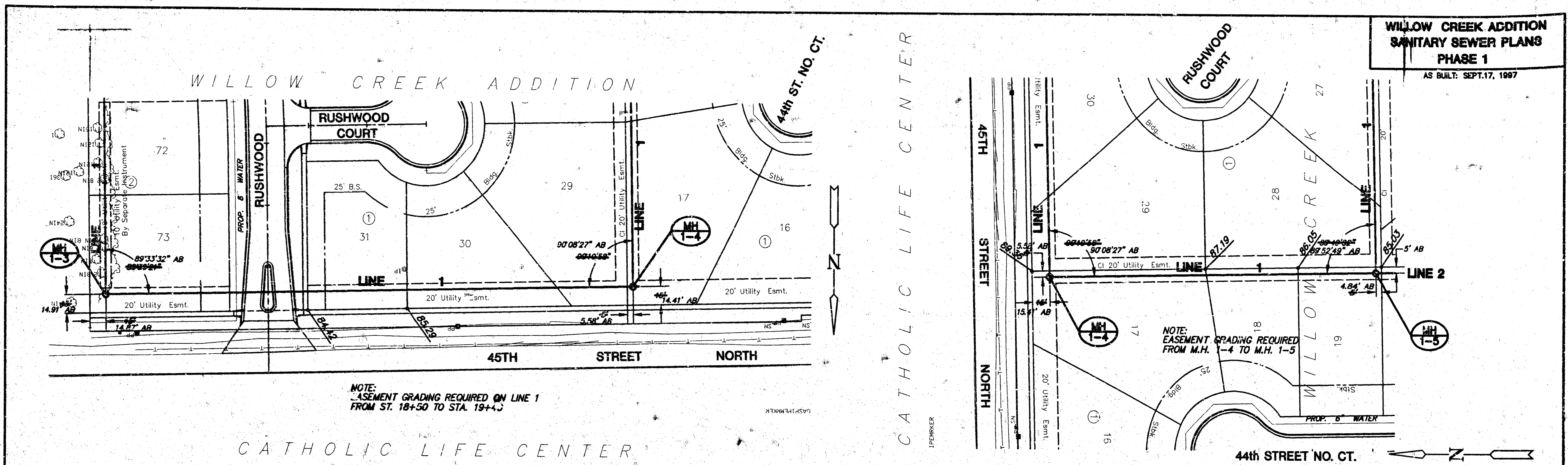
C:\BELAIRE\68056\SAN SEWER.DWG

**WILLOW CREEK ADDITION
SANITARY SEWER PLANS
PHASE 1**
AS BUILT: SEPT. 17, 1997



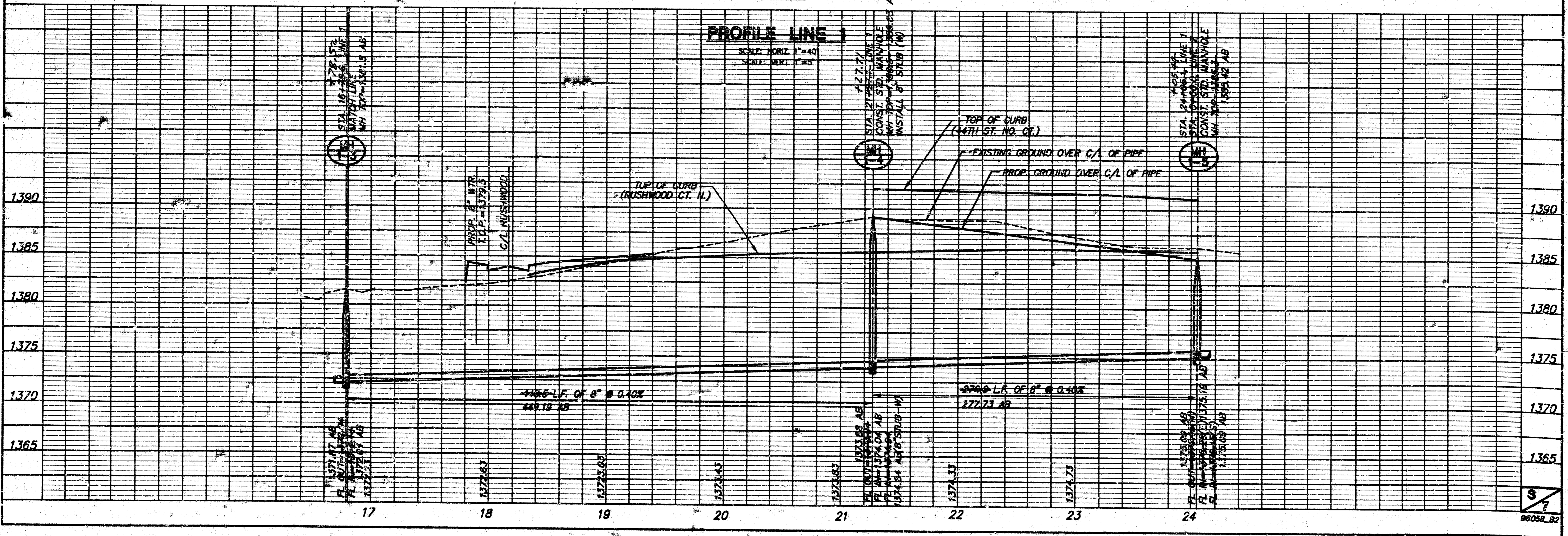
2. UNPLATTED (SHEET) 98058.B1 THE SDG 25 02 12 03 1997

**WILLOW CREEK ADDITION
SANITARY SEWER PLANS
PHASE 1**
AS BUILT: SEPT. 17, 1997



PLAN LINE 1

SCALE: 1"=40'

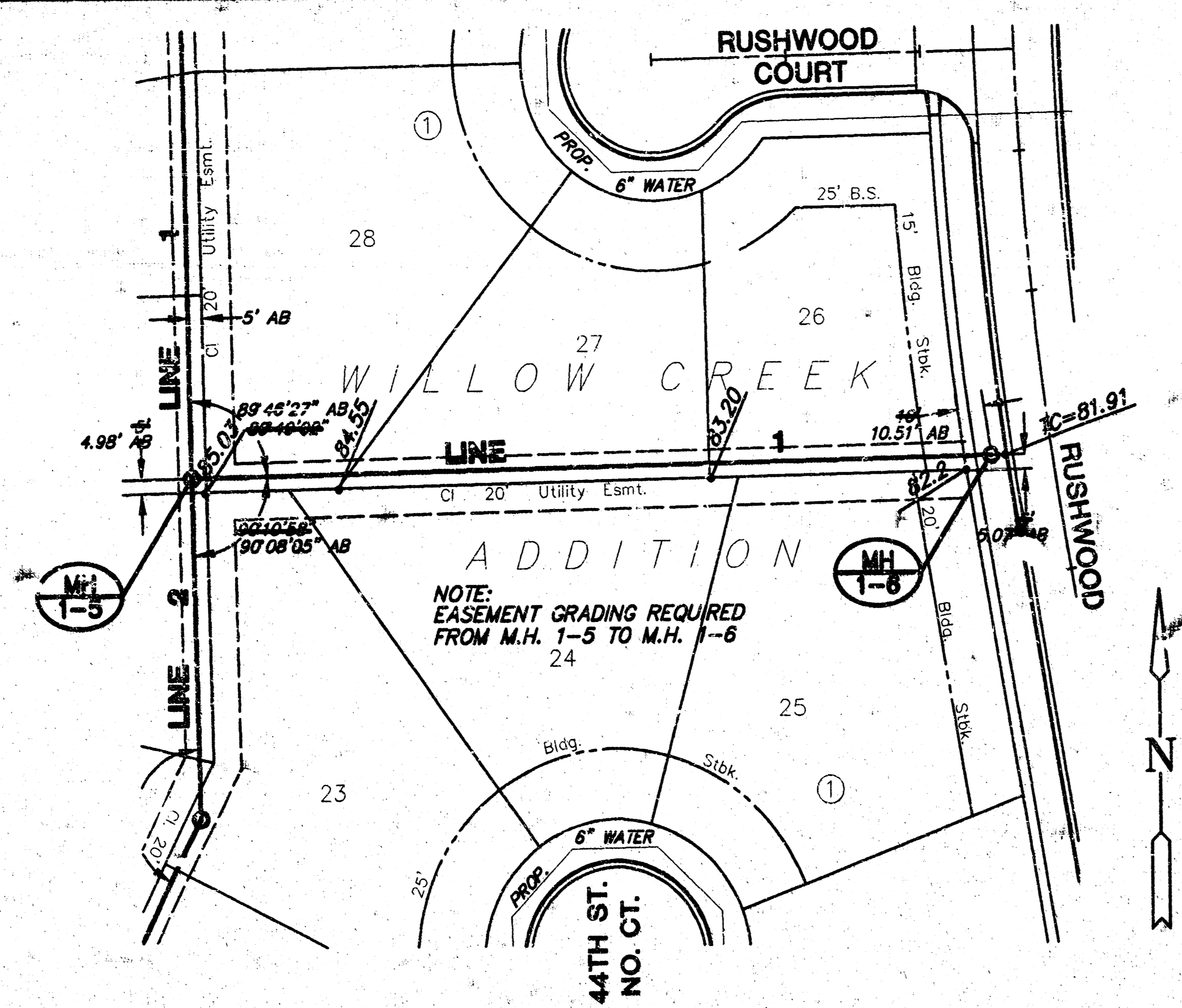


8. RELATIVE SURVEYING (96058_B2) THE 5th 25 05 34.43 1997

3
96058_B2

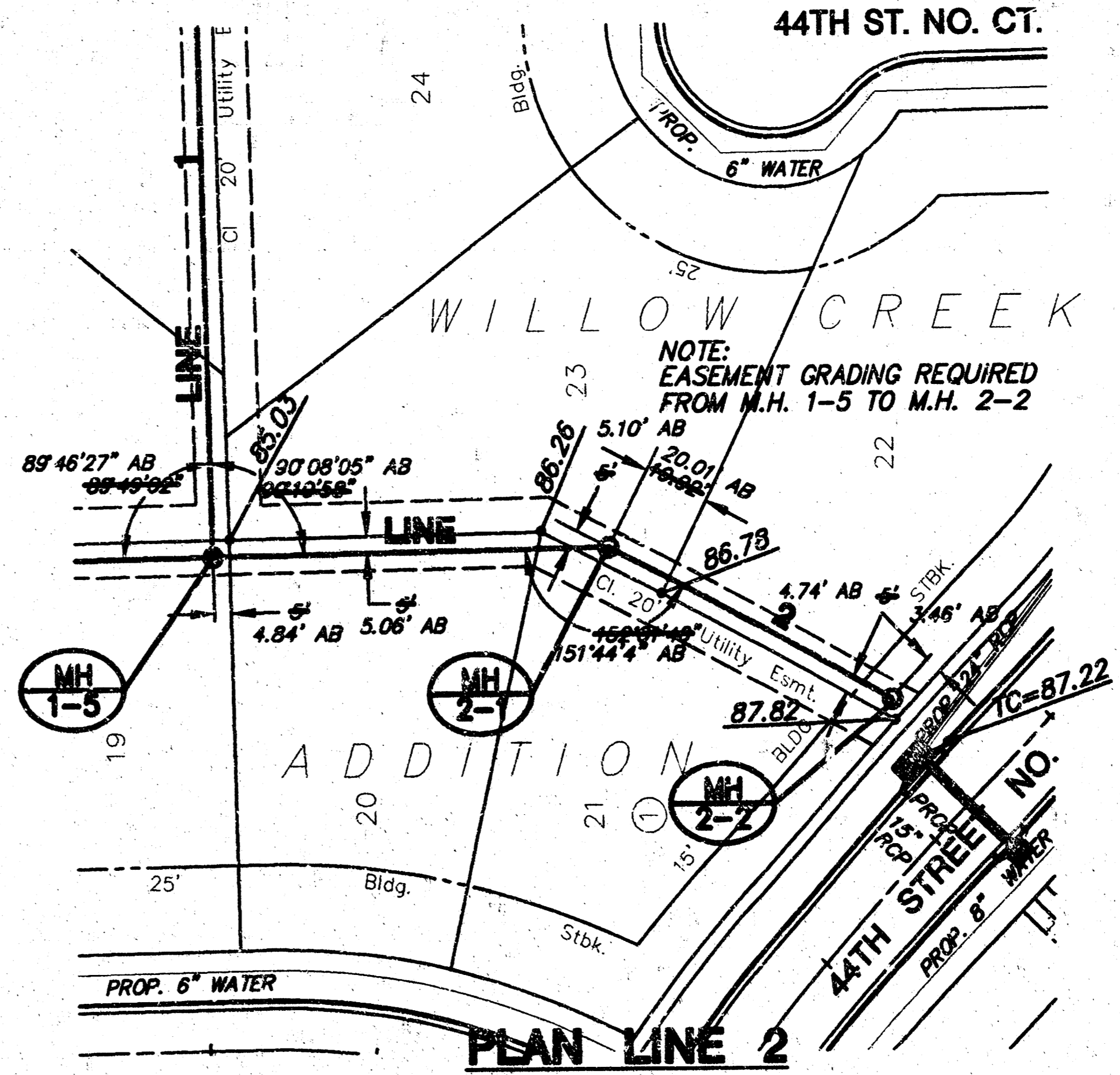
**WILLOW CREEK ADDITION
SANITARY SEWER PLANS
PHASE 1**

AS BUILT: SEP 17, 1997



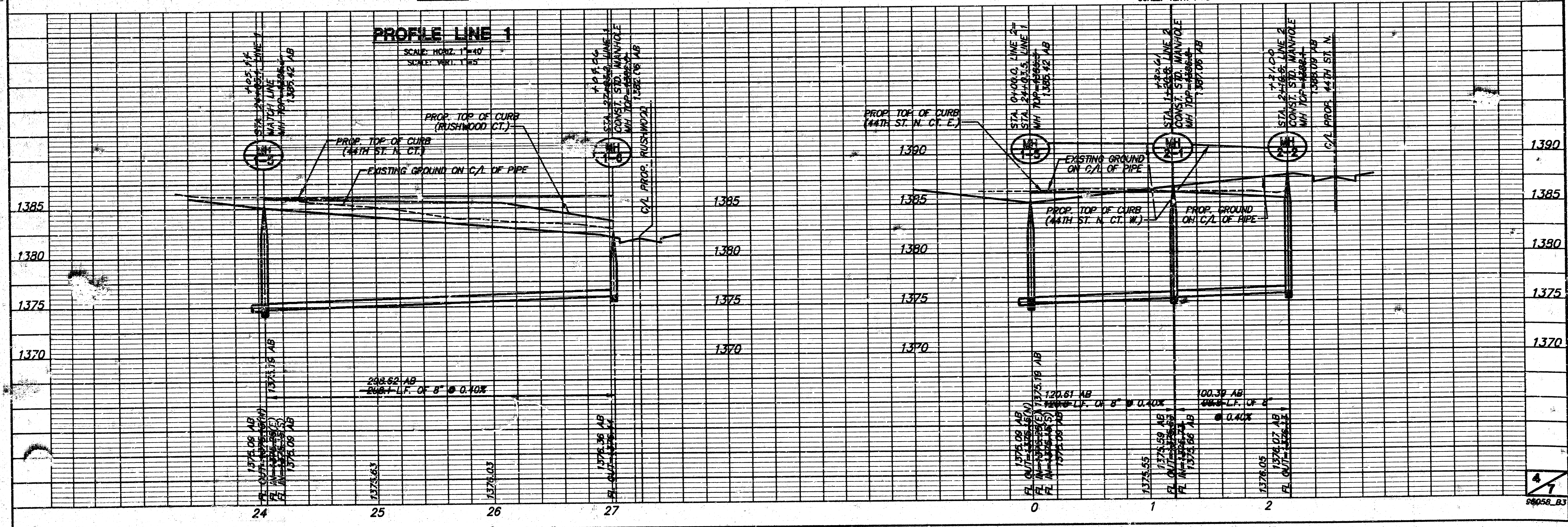
PLAN LINE 1

SCALE: 1"=40'



PROFILE LINE 2

SCALE: HORIZ. 1"=40'
SCALE: VERT. 1"=5'



PROFILE LINE 1

SCALE: HORIZ. 1"=40'
SCALE: VERT. 1"=5'

