

SANITARY SEWER PLANS FOR WILLOW CREEK ADDITION PHASE 3

AN ADDITION TO
CITY OF BEL AIRE
SEDGWICK COUNTY, KANSAS
NOVEMBER 1997

APPROVED AS NOTED
BY CITY ENGINEER OF WICHITA

SANITARY SEWERS VRH 12/15/97
STORM SEWERS _____
DRIVEWAY APPROACHED _____
WATER MAINS _____
PAVING _____

Notes

NOTE TO CONTRACTOR

INSPECTION AND TESTING FOR THIS PROJECT IS TO BE PROVIDED BY A LICENSED CONSULTING ENGINEERING FIRM UNDER CONTRACT WITH THE OWNER/DEVELOPER. SAID INSPECTION TO BE IN ACCORDANCE WITH THE CITY OF WICHITA STANDARD CONSTRUCTION ENGINEERING PRACTICES AND CERTIFIED BY A LICENSED PROFESSIONAL ENGINEER. NO WORK SHALL BE PERFORMED IN DEDICATED EASEMENTS OR THE PUBLIC RIGHT-OF-WAY BY THE CONTRACTOR WITHOUT SUCH INSPECTION NOR SHALL ANY WORK BE COMMENCED IN DEDICATED EASEMENTS OR PUBLIC RIGHT-OF-WAY WITHOUT WRITTEN AUTHORIZATION BY THE CITY ENGINEER.

INDEX TO DRAWINGS

SHEET NO.	DESCRIPTION
1	TITLE SHEET
2	LINE 1
3	LINE 2 & LINE 3
4	MANHOLE DETAILS
5	VERTICAL RISER DETAILS
6	FINAL PLAN

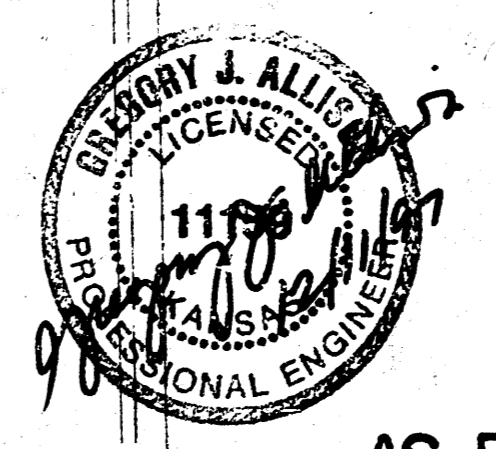
BENCHMARKS

- B.M. #1 B.M. R.R. SPIKE IN N. FACE P.P. 548± EAST OF N.W. COR. 30-26S-2E ON S. SIDE 45TH ST. NORTH.
ELEV. = 1405.22
- B.M. #2 "C" CUT ON S.W. COR. OF AREA DITCH INLET 30' S. & 54' W. OF C. 45TH & RUSHWOOD.
ELEV. = 1382.71
- B.M. #3 "C" CUT ON TOP OF S. CURB 44TH ST.± 40' W. OF RUSHWOOD.
ELEV. = 1381.24

Booked p. 30 8/12/98 R. Loomis
Nowak Construction

AS BUILT - MAY, 1998

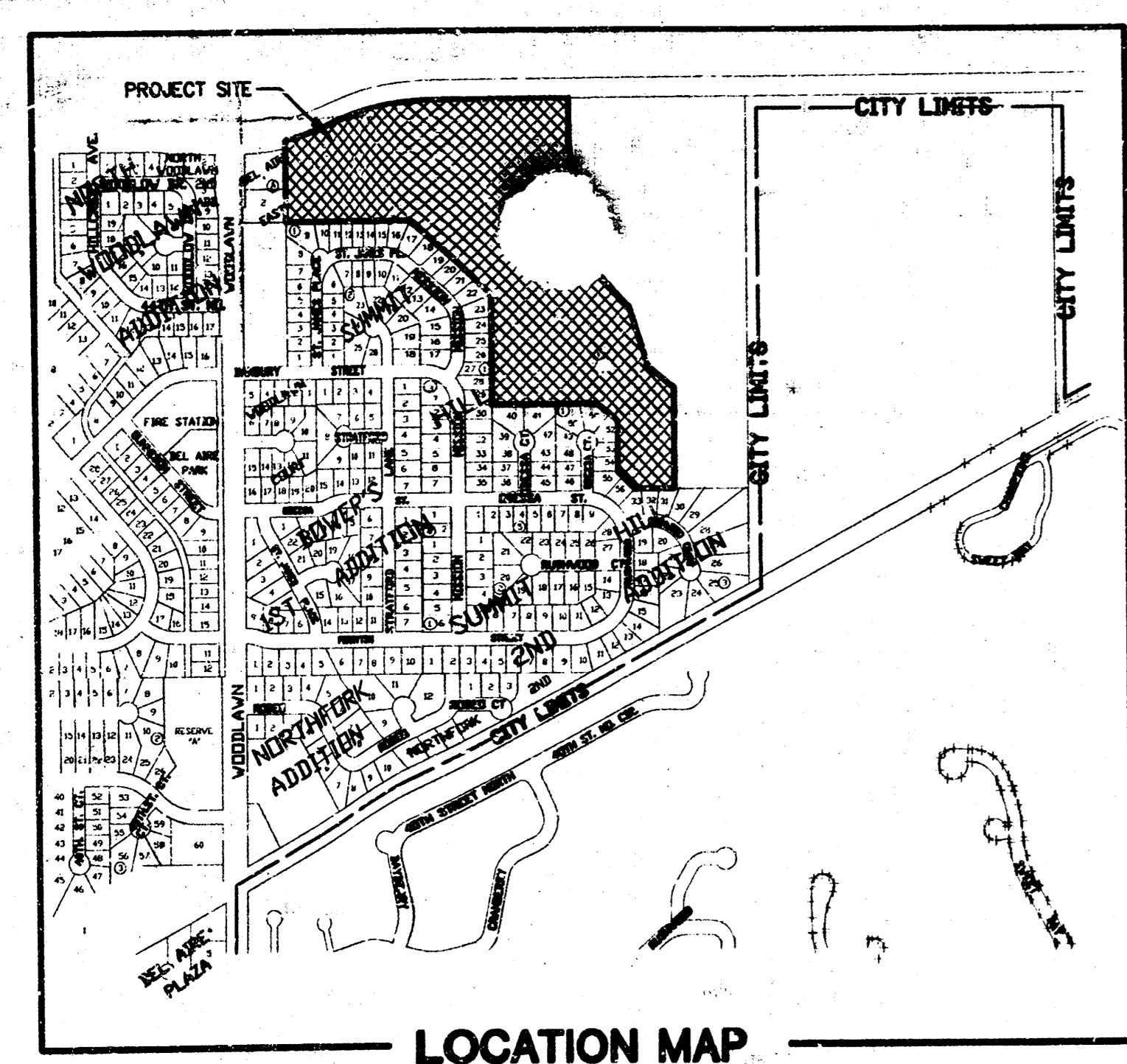
**CITY OF WICHITA
PRIVATE PROJECT NO. 761PPS (607861)**



WILLOW CREEK ADDITION - PHASE 3
PROJECT NAME

SANITARY SEWER PLANS
SHEET TITLE

MID-KANSAS ENGINEERING CONSULTANTS, INC. DESIGN BY: 411 N. WEBB ROAD WICHITA, KS. 67206 316-684-9600	GJA/JTC DESIGN BY: 1534W 57. 	GJA/DSS/JTC CHECKED BY: 19701_BT 1 / 6 DATE SHEET OF
---	---	---



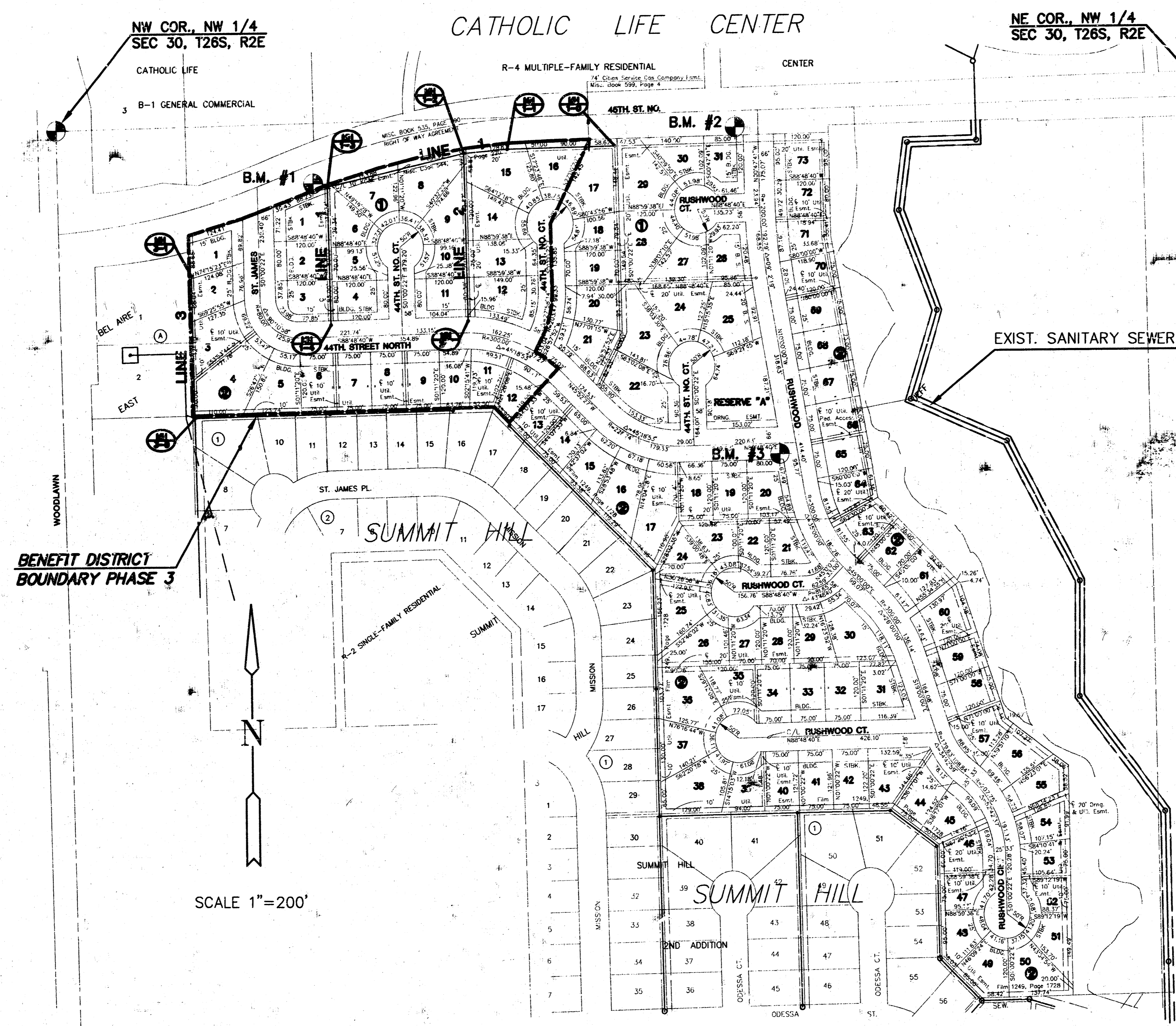
GENERAL NOTES

1. THE CONTRACTOR SHALL BE RESPONSIBLE FOR PRESERVING PROPERTY IRONS. THE CONTRACTOR WILL BE REQUIRED TO RE-ESTABLISH ANY PROPERTY IRONS WHICH ARE DAMAGED OR DESTROYED BY HIS CONSTRUCTION OPERATIONS. SUCH IRONS SHALL BE RE-ESTABLISHED BY A LICENSED LAND SURVEYOR IN ACCORDANCE WITH STATE LAWS.
2. EXISTING UTILITIES AND THEIR LOCATIONS, AS SHOWN ON THE PLANS REPRESENT THE BEST INFORMATION OBTAINABLE FOR DESIGN. LOCATION INFORMATION HAS BEEN OBTAINED FROM THE VARIOUS UTILITY COMPANIES AND IS EITHER FROM COMPANY RECORD DRAWINGS OR COMPANY PROVIDED FIELD LOCATIONS. THE PLAN LOCATIONS SHOWN ARE NOT GUARANTEED. ADDITIONAL EXISTING UTILITIES MAY ALSO BE ENCOUNTERED.
3. CONTRACTOR WILL BE REQUIRED TO PROVIDE A MINIMUM ADVANCE NOTICE OF FORTY-EIGHT (48) HOURS TO UTILITY COMPANIES PRIOR TO STARTING ANY EXCAVATION AS FOLLOWS:

KANSAS ONE-CALL	1-800-344-7233
or 687-2470 (LOCAL WICHITA)	

THE CONTRACTOR MUST NOTIFY THE FOLLOWING IN CASE OF AN EMERGENCY:

SOUTHWESTERN BELL TELEPHONE COMPANY	1-800-734-7590
CABLEVISION	263-2061
KGE (GAS & ELECTRIC)	383-8600
CITY OF WICHITA WATER & SEWER MAINTENANCE	258-4908
ARKLA GAS COMPANY	946-0096
CITY OF BEL AIRE (Terry Gilling)	744-2451
4. RUBBLE FROM THE REMOVAL OF MISCELLANEOUS STRUCTURES AND EXCESS EXCAVATION WHICH IS TO BE WASTED SHALL BE DISPOSED OF ON SITES TO BE PROVIDED BY THE CONTRACTOR. THESE SITES SHALL BE APPROVED BY THE ENGINEER AS TO SUITABILITY, APPEARANCE AND SITE LOCATION. LOCATIONS THAT, IN THE OPINION OF THE ENGINEER, WILL LEAVE AN UNSIGHTLY APPEARANCE WILL NOT BE APPROVED. ALL DISPOSAL SITES MUST BE APPROVED BY THE KANSAS DEPARTMENT OF HEALTH AND ENVIRONMENT. MATERIAL EITHER STOCKPILED OR DISPOSED OF IN A FLOOD PLAIN WOULD REQUIRE A KANSAS STATE BOARD OF AGRICULTURE PERMIT. ANY MATERIAL DUMPED IN WATERS OF THE UNITED STATES OR WETLANDS IS SUBJECT TO U.S. CORPS OF ENGINEERS PERMITTING REGULATIONS. ANY MATERIAL BURIED OR STOCKPILED BEYOND APPROVED CONSTRUCTION LIMITS WOULD REQUIRE ADDITIONAL ARCHEOLOGICAL INVESTIGATIONS UNLESS BURIED IN A PREVIOUSLY APPROVED BORROW LOCATION.
5. COST OF EXCAVATION, HAULING, AND DUMPING OF EXCESS EXCAVATION SHALL BE SUBSIDIARY TO THE PROJECT.
6. A PORTION OF EXCESS EXCAVATED MATERIAL SHALL BE MOUNDING AROUND MANHOLES WHICH EXTEND MORE THAN ONE (1) FOOT ABOVE THE EXISTING GROUND. SUCH MOUNDS SHALL BE CONSTRUCTED WITH A SIX (6) FOOT DIAMETER FLAT TOP WITH 4 TO 1 SIDE SLOPES DOWN TO THE ORIGINAL GROUND. THE ELEVATION OF THE FLAT TOP OF THE MOUND SHALL BE 0.4 FOOT BELOW THE TOP OF THE MANHOLE.
7. ALL STUBS AND PLUGGED PIPES SHALL BE LOCATED WITH GREEN PLASTIC TAPE IN THE SAME MANNER AS RISERS.
8. PRIOR TO LAYING SEWER LINES USING EXISTING STUBS IN EXISTING MANHOLES, THE CONTRACTOR SHALL EXPOSE AND VERIFY THE ELEVATION, GRADE AND ALIGNMENT OF EXISTING STUBS AND NOTIFY THE ENGINEER OF ANY DEVIATION FROM THE PLAN. WHERE CONNECTION TO AN EXISTING MANHOLE THAT DOES NOT HAVE AN EXISTING STUB OR THE STUB IS UNUSABLE DUE TO ELEVATION GRADE OR ALIGNMENT, THE CONTRACTOR SHALL RESHAPE THE EXISTING MANHOLE INVERT TO PROVIDE SMOOTH FLOW. THE COST OF RESHAPING EXISTING MANHOLE INVERTS IS INCIDENTAL TO THE PROJECT.
9. TREES AND SHRUBS IN PUBLIC RIGHT-OF-WAY WHICH ARE IN DIRECT CONFLICT WITH PROPOSED NEW CONSTRUCTION SHALL BE REMOVED BY THE CONTRACTOR WITH THE ENGINEER'S APPROVAL. TREES AND SHRUBS WHICH ARE NOT IN DIRECT CONFLICT WITH PROPOSED NEW CONSTRUCTION SHALL BE SAVED AND PROTECTED FROM DAMAGE.
10. ALL DISTURBED AREAS TO BE SEEDDED WITH RYE GRASS AT A RATE OF 200 LBS. / ACRE WITHIN 10 DAYS OF CONSTRUCTION. CONTRACTOR TO PREPARE GROUND PER CITY SPEC.



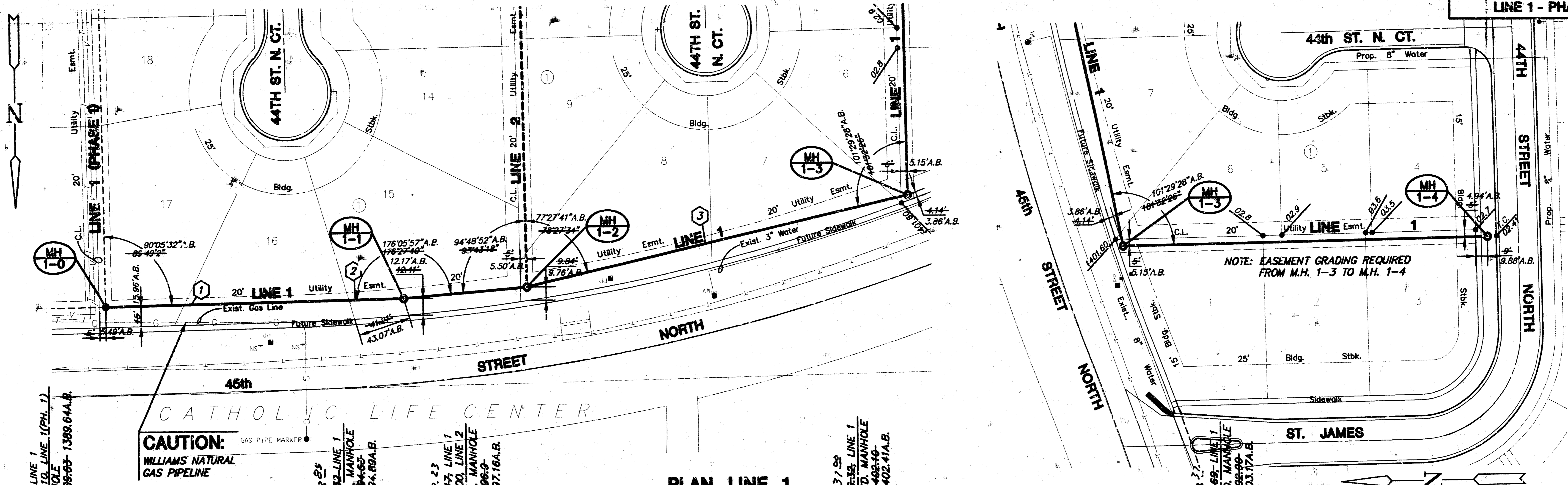
NOTE:
WATER LINE VALVES TO BE OPERATED BY CONTRACTOR ONLY IF WATER INSPECTOR IS ON SITE.

G:\BELAIRE\607861\607861.DWG Thu Dec 11 11:42:05 1997

G:\BELAIRE\607861\607861.DWG

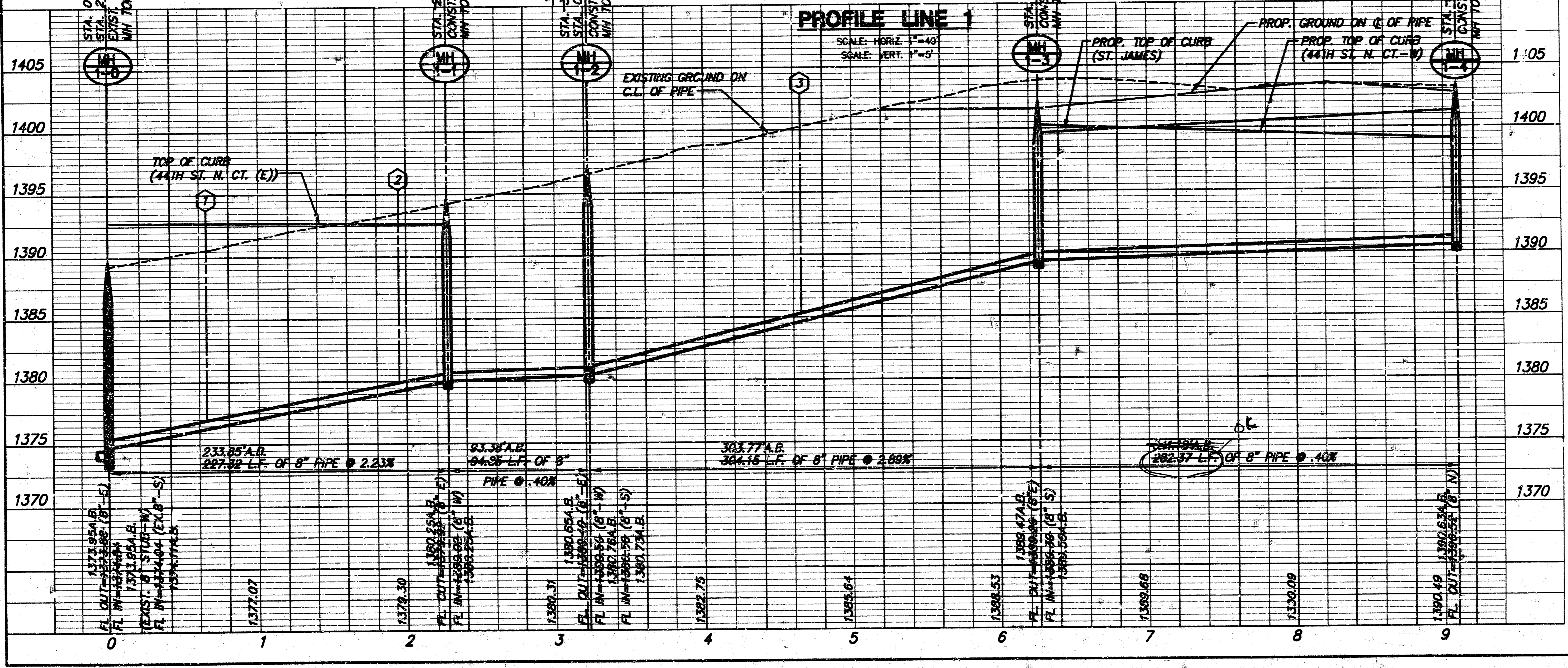
orc

**WILLOW CREEK ADDITION
SANITARY SEWER PLANS
LINE 1 - PHASE 3**

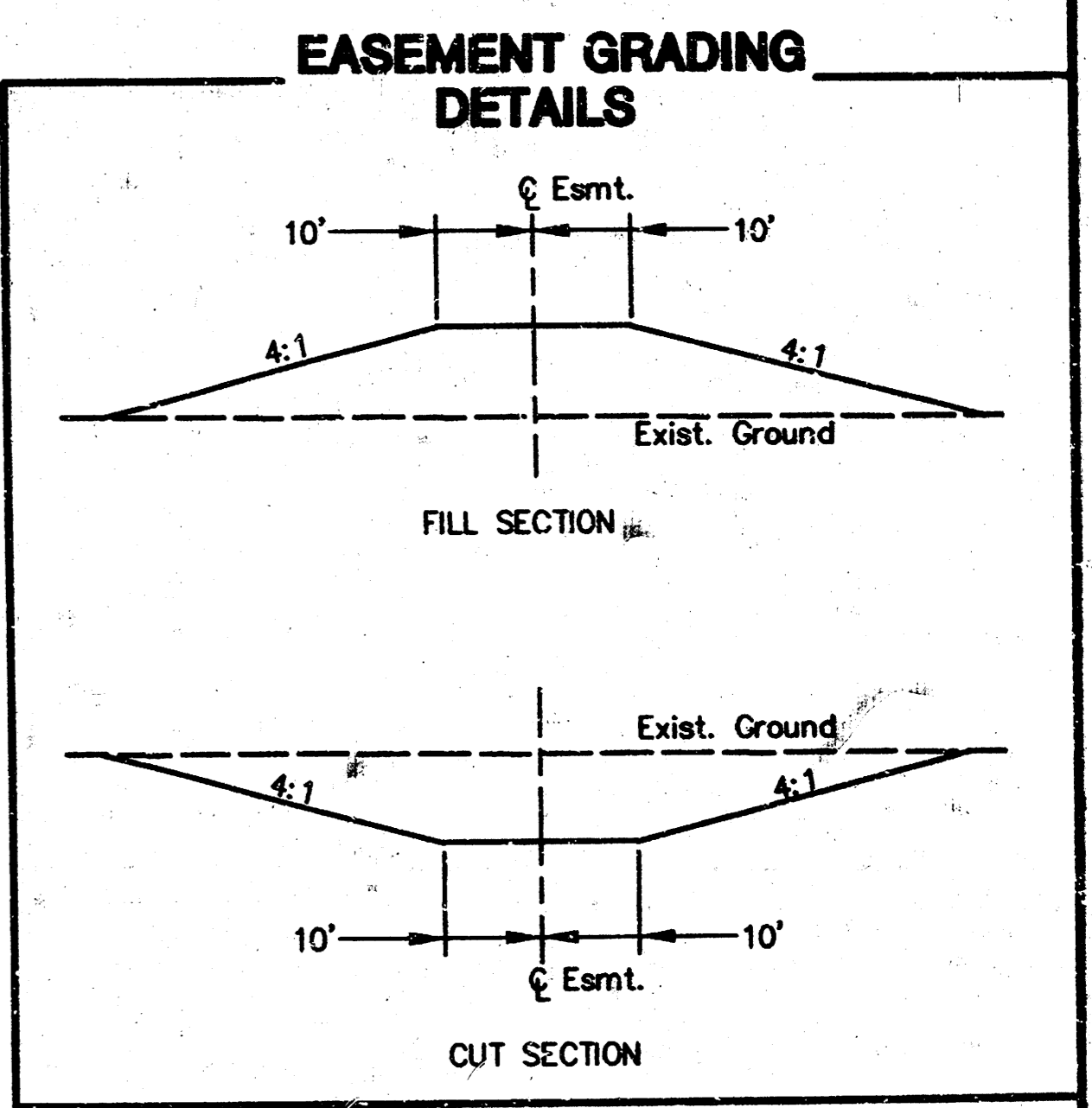


CAUTION:
WILLIAMS NATURAL
GAS PIPELINE

PLAN LINE 1
SCALE: 1"=40'



AS BUILT MAY, 1998

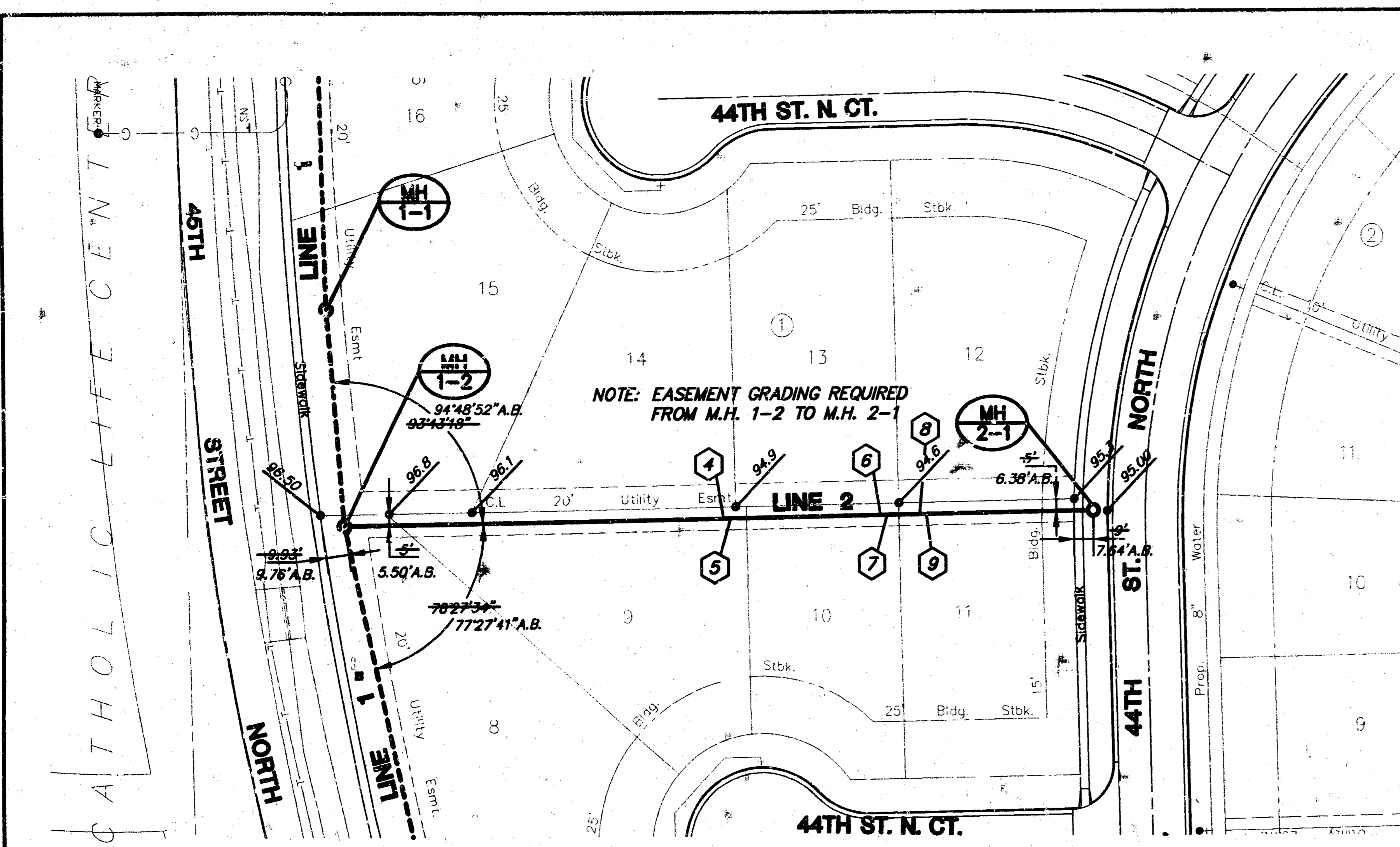


2/8

97101_B1
PRIVATE PROJECT NO. 761PPS (607861)

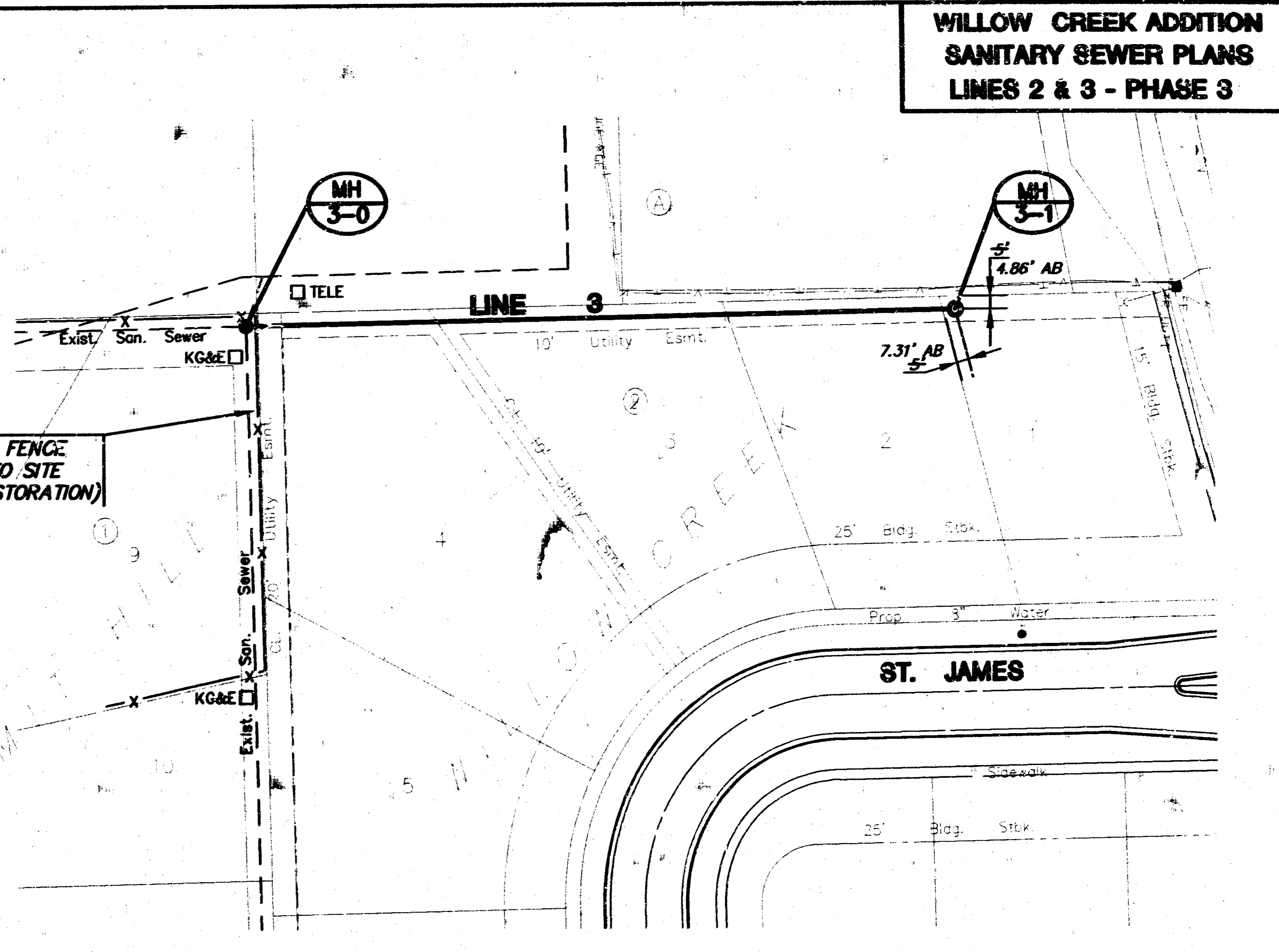
I:\RELATIVE\60098\SAN\PH3\7101_B1.DWG Red WJL 29 11:02:36 1998

**WILLOW CREEK ADDITION
SANITARY SEWER PLANS
LINES 2 & 3 - PHASE 3**

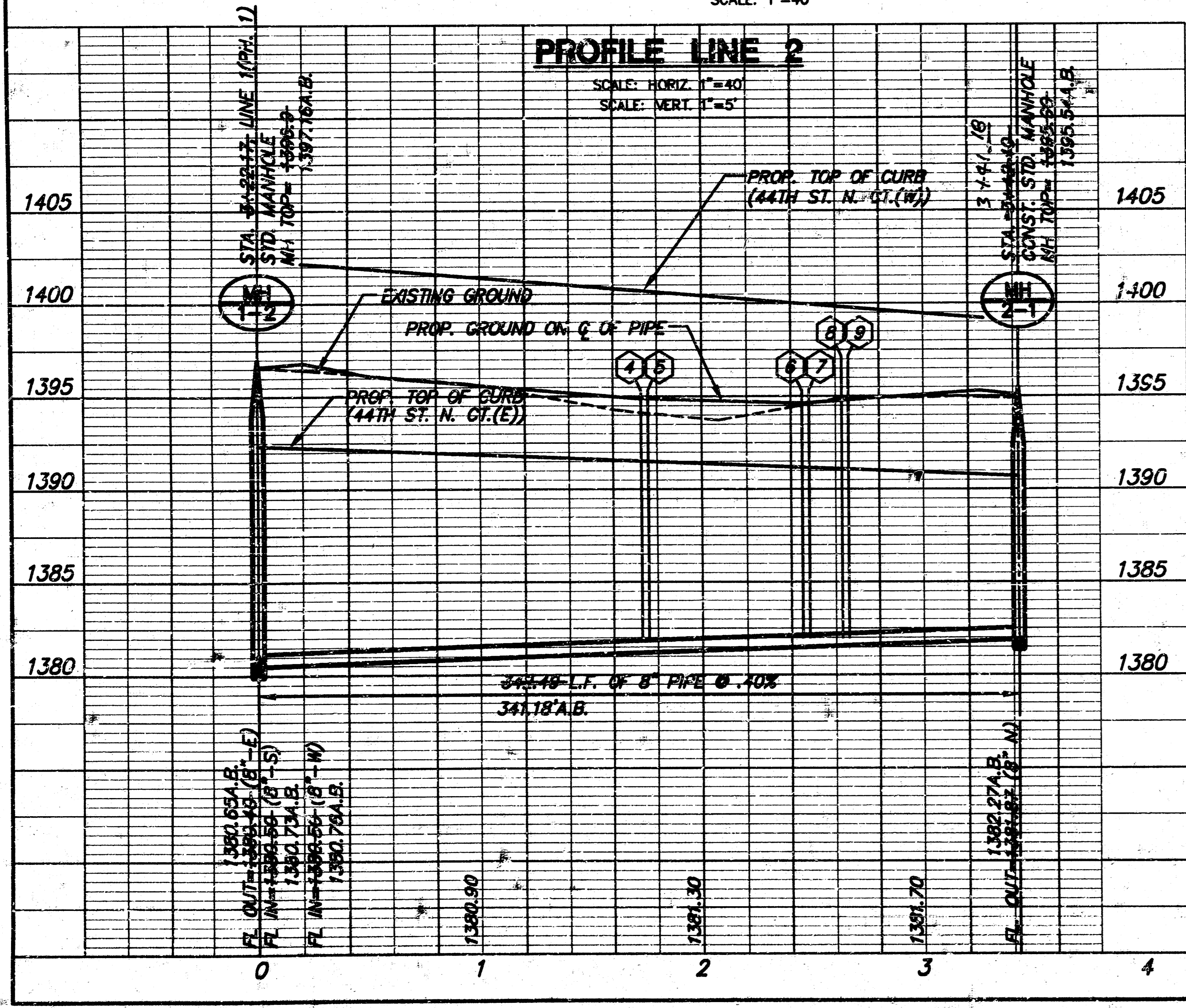


PLAN LINE 2
SCALE: 1"=40'

AS BUILT MAY, 1998



PLAN LINE 3
SCALE: 1"=40'

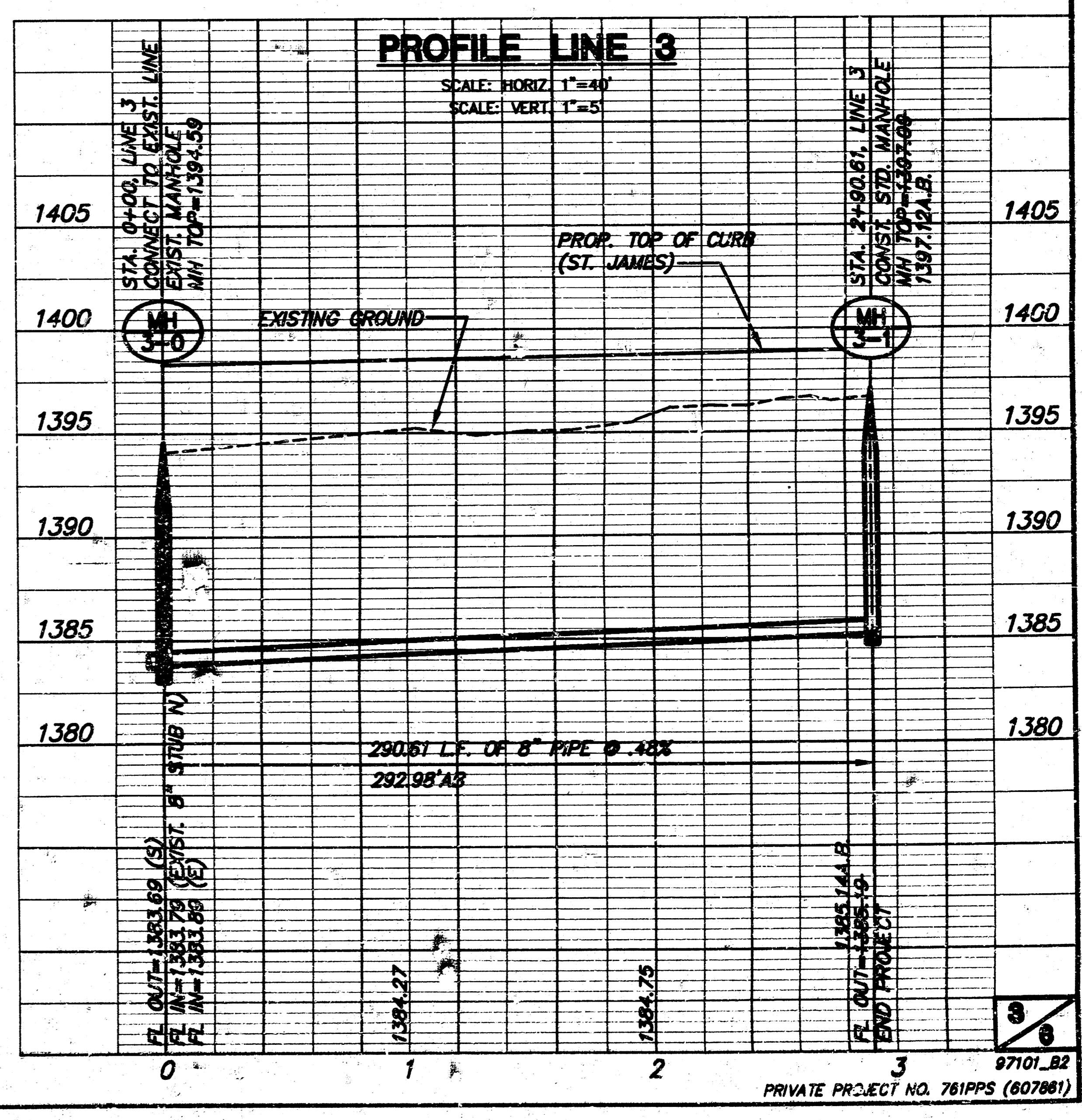


PROFILE LINE 2
SCALE: HORIZ. 1"=40'
SCALE: VERT. 1"=5'

SEWER SERVICE TABLE FOR WILLOW CREEK ADDITION

NO.	TYPE	LOCATION			FOR INFORMATION ONLY		
		LOT NO.	BLOCK NO.	LINE NO.	STATION/DIRECTION	APPROXIMATE LENGTH 4" PIPE	
1	8"x4" Tee Saddle	16	1	1	0+65/Lt.	13'	5'
2	8"x4" Tee Saddle	15	1	1	1+95/Lt.	13'	5'
3	8"x4" Tee Saddle	8	1	1	4+65/Lt.	10'	5'
4	8"x4" Tee Saddle	14	1	2	1+73/Lt.	9'	14'
5	8"x4" Tee Saddle	9	1	2	1+76/Rt.	9'	4'
6	8"x4" Tee Saddle	13	1	2	2+45/Lt.	9'	14'
7	8"x4" Tee Saddle	10	1	2	2+48/Rt.	9'	4'
8	8"x4" Tee Saddle	12	1	2	2+63/Lt.	9'	14'
9	8"x4" Tee Saddle	11	1	2	2+66/Rt.	9'	4'

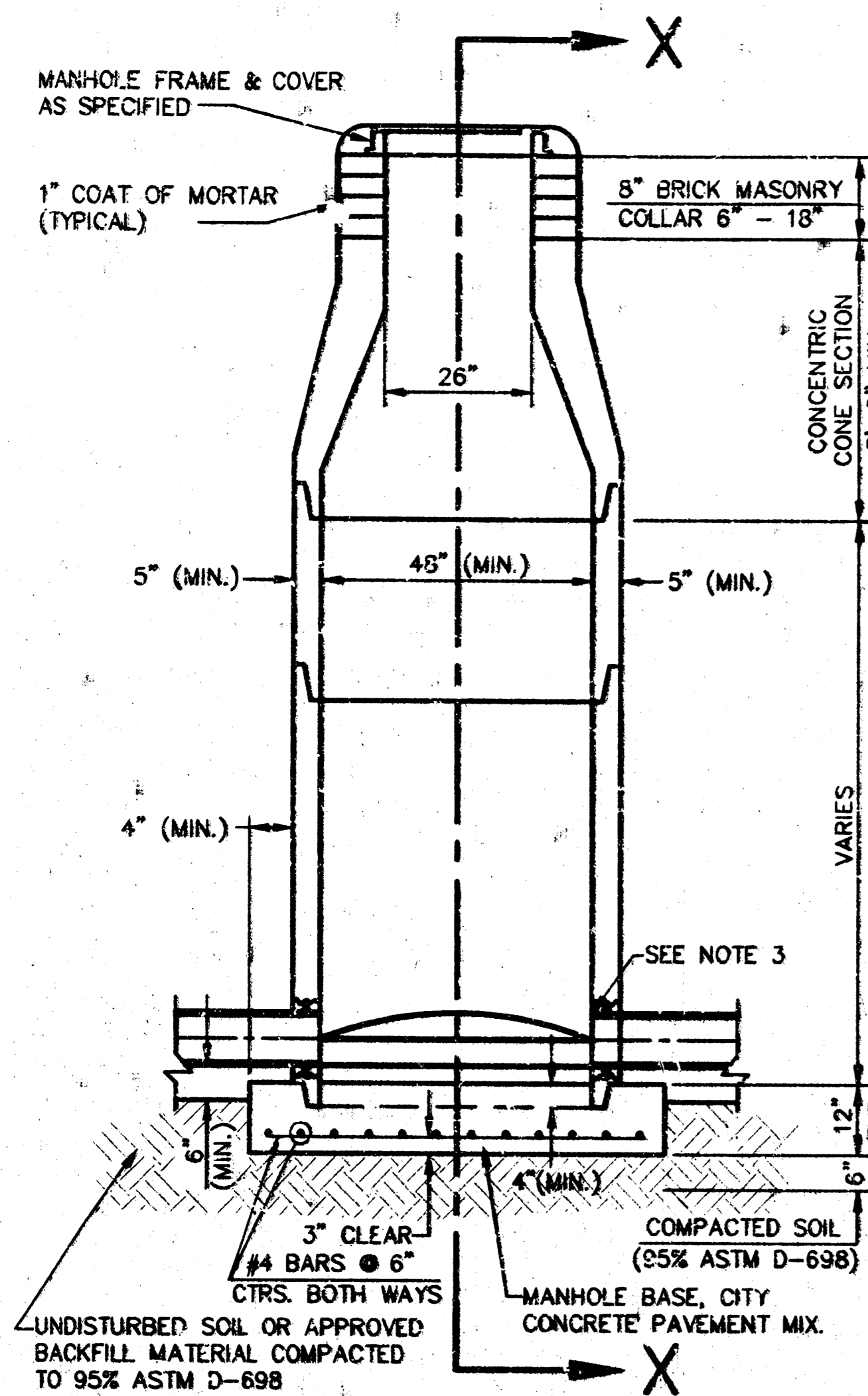
NOTES:
1. Vertical Riser Pipe shall be extended to 2' minimum above ground water elevation and 4' maximum below proposed ground elevation.



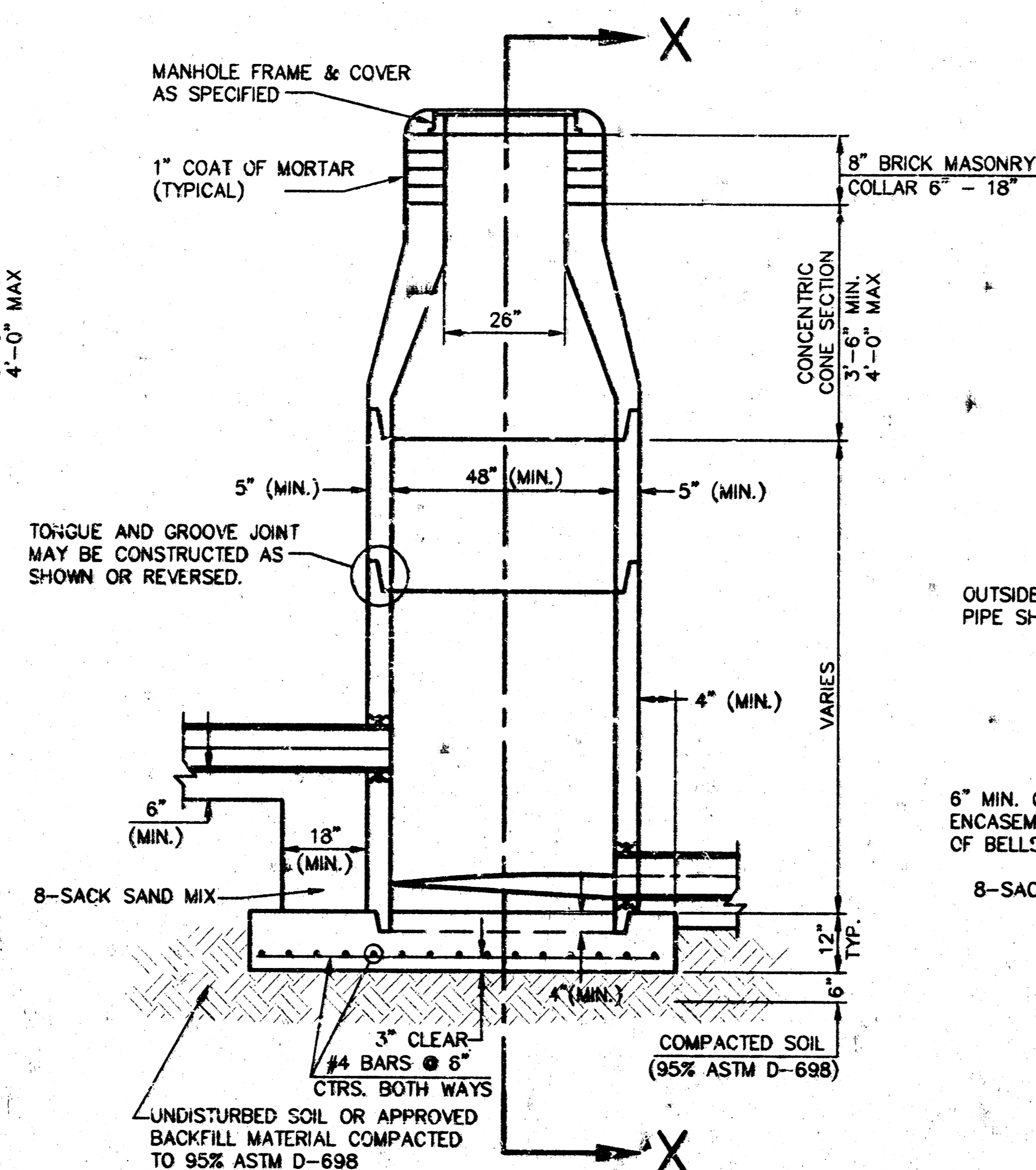
PROFILE LINE 3
SCALE: HORIZ. 1"=40'
SCALE: VERT. 1"=5'

SEWER APPURTENANCES DETAILS

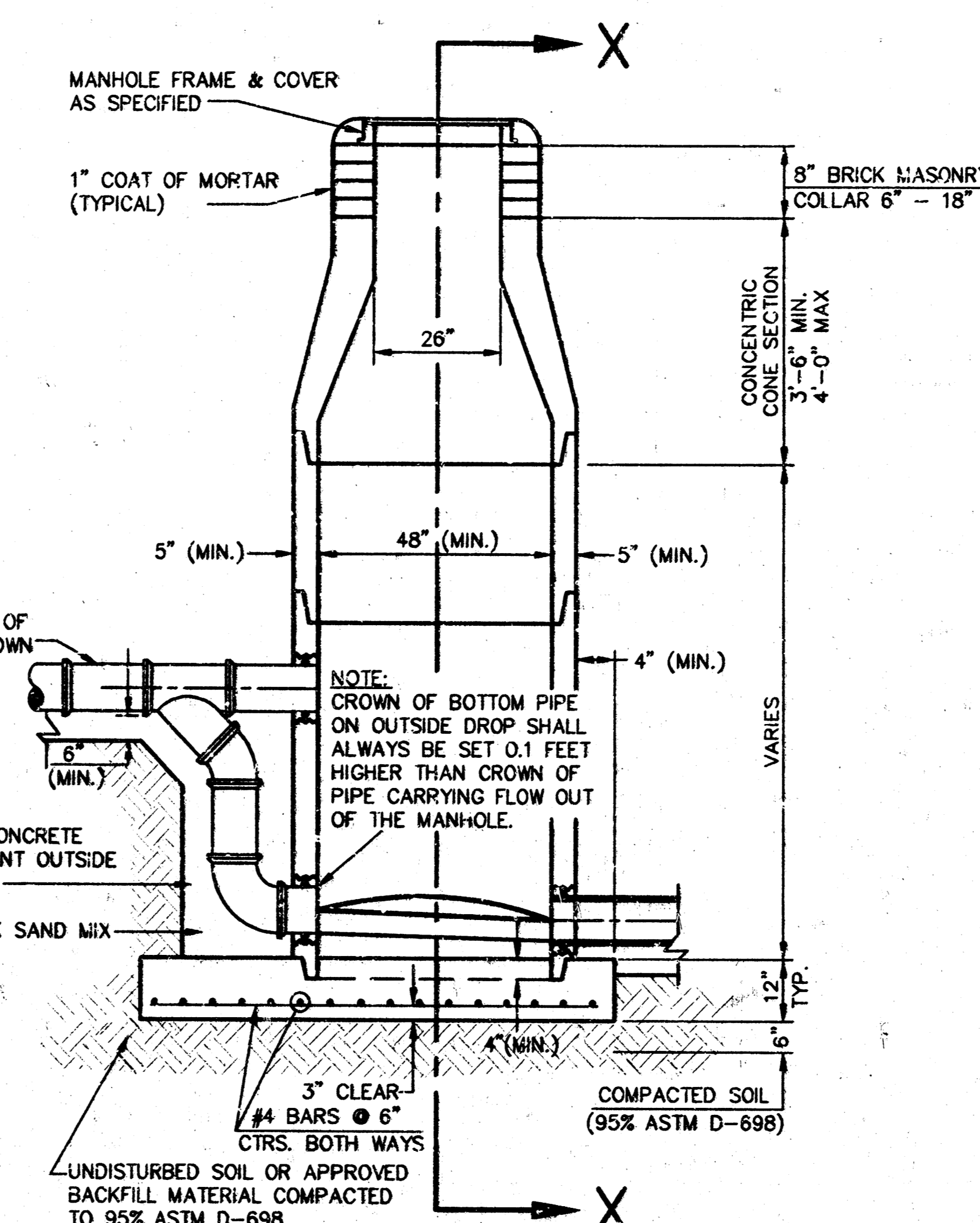
ADOPTED AS STANDARD DESIGN
BY
CITY OF WICHITA



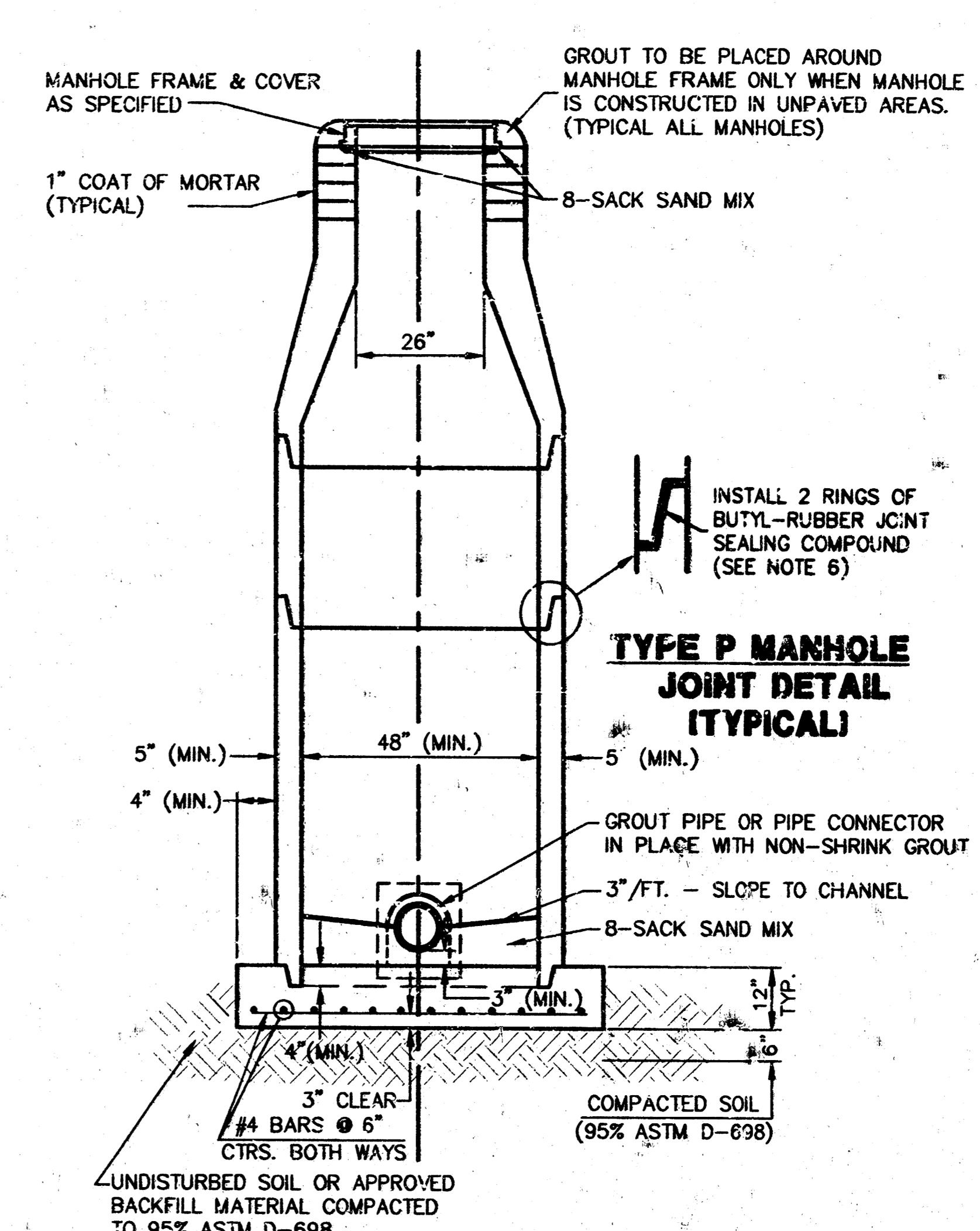
**TYPE P
STANDARD MANHOLE**



**TYPE P
INSIDE DROP MANHOLE**



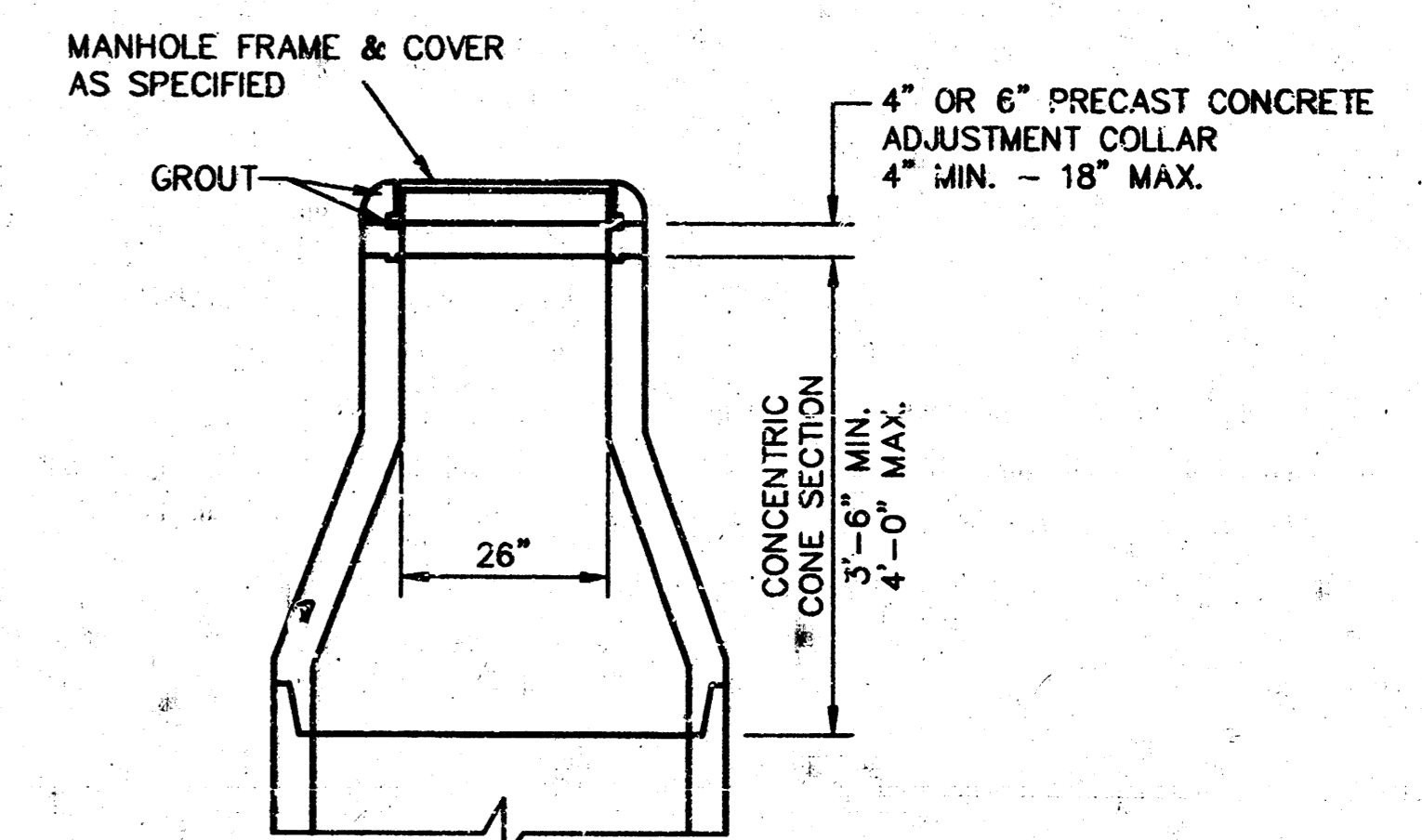
**TYPE P
OUTSIDE DROP MANHOLE**



**SECTION X
TYPICAL**

GENERAL NOTES - PRECAST MANHOLE NOTES

- ALL PRECAST CONCRETE MANHOLE SECTIONS SHALL CONFORM TO THE LATEST REVISIONS OF A.S.T.M. C478 AS MODIFIED BY THE SPECIFICATIONS.
- NON-SHRINK GROUT SHALL BE NON-METALLIC TYPE.
- APPROVED FLEXIBLE WATERSTOP GASKETS SHALL BE INSTALLED TO JOIN THE SEWER TO THE MANHOLE WALL WHEN A.B.S. COMPOSITE PIPE OR P.V.C. PIPE IS USED. FOR OTHER TYPES OF PIPE THE SEWER SHALL BE GROUTED IN PLACE WITH NON-SHRINK GROUT. THE SEWER PIPE SHALL BE SUPPORTED WITH CONCRETE ENCASEMENT A MINIMUM OF 3 FEET FROM THE MANHOLE WALL AND TO THE FIRST JOINT FOR V.C.P. SUCH THAT THE JOINT REMAINS FLEXIBLE.
- ALL INSIDE SURFACES OF THE CONCRETE MANHOLE WHICH WOULD BE EXPOSED TO SEWER GAS SHALL BE COATED WITH 2 COATS INEMEC SERIES 66 HI-BUILD EPOXOLINE, DRY THICKNESS OF 8 MILS. (MIN.)
- EXTERIOR MANHOLE WALLS SHALL BE COATED WITH 1 COAT MOBILARMA 633 BITUMINUS COATING.
- JOINT SEALING COMPOUND SHALL BE KENT SEAL NO. 2 OR APPROVED EQUAL.
- PRECAST MANHOLES SHALL BE SET AT LEAST 4 INCHES INTO THE MANHOLE BASE.
- TOP OF MANHOLE FLOOR SLAB SHALL BE AT LEAST 3 INCHES BELOW THE FLOW LINE OF THE OUTLET PIPE TO INSURE SUFFICIENT MINIMUM THICKNESS OF SHAPED INVERT.
- LIFTING HOLES SHALL BE FILLED WITH NON-SHRINK GROUT AND THE INTERIOR SURFACE COATED AS SPECIFIED.
- MORTAR USED IN MASONRY CONSTRUCTION SHALL CONTAIN 8 SACKS OF CEMENT PER CUBIC YARD. CONCRETE USED IN MANHOLE BASES SHALL CONFORM TO THE REQUIREMENTS OF CONCRETE FOR CONCRETE PAVEMENT CONSTRUCTION AS SPECIFIED IN THE CITY STANDARD PAVING SPECIFICATIONS USING CITY CONCRETE PAVEMENT MIX WITHOUT AIR ENTRAINING ADMIXTURE. MORTAR SHALL BE PLACED AROUND THE MANHOLE RING AS SHOWN ON THE DRAWINGS WHEN MANHOLES ARE CONSTRUCTED IN UNPAVED AREAS. MANHOLES CONSTRUCTED WHERE PIPE SIZES ARE SMALLER THAN 24" SHALL HAVE AN INSIDE DIAMETER OF 4". MANHOLES CONSTRUCTED WHERE PIPE SIZES ARE 24" OR LARGER SHALL HAVE AN INSIDE DIAMETER OF 5". COMPLETED MANHOLE SHALL BE WITHOUT LEAKS AND WATER TIGHT.
- REINFORCING STEEL SHALL BE INSTALLED IN THE MANHOLE BASES AND SHALL CONSIST OF NO. 4 BARS PLACED ON 6" CENTERS IN BOTH DIRECTIONS. THE MANHOLE BASE REINFORCEMENT SHALL BE PLACED AT LEAST 3" ABOVE THE BOTTOM OF THE MANHOLE BASE. ALL COSTS FOR FURNISHING AND INSTALLING REINFORCING STEEL SHALL BE INCLUDED IN THE UNIT PRICE BID FOR THE MANHOLE.
- OPENINGS SHALL BE CUT INTO THE MANHOLE WALL WHEN OUTSIDE DROPS ARE CONSTRUCTED ON EXISTING MANHOLES. SUCH OPENINGS CUT INTO EXISTING MANHOLES SHALL BE AS SMALL AS PRACTICAL TO FACILITATE INSTALLING AND GROUTING THE NEW PIPE IN PLACE. WATERSTOP GASKETS SHALL BE USED WITH P.V.C. AND A.B.S. COMPOSITE PIPE. THE NEW PIPE SHALL BE GROUTED INTO THE OPENING USING AN APPROVED NONSHRINK GROUT FOR THE FULL MANHOLE WALL THICKNESS. THE EXTERIOR OF THE COMPLETED CONNECTION SHALL BE SEALED WITH AN APPROVED BITUMINOUS COATING SUCH THAT THE CONNECTION WILL BE WATER TIGHT. FLOOR OF MANHOLE SHALL BE MODIFIED TO FORM NEW FLOW CHANNEL FOR THE NEW CONNECTION AS INDICATED BY THE DRAWING. THIS WORK, INCLUDING MODIFICATION OF MANHOLE FLOOR, SHALL BE PAID FOR AT THE UNIT PRICE BID FOR OUTSIDE DROP STACK CONSTRUCTED ON EXISTING MANHOLE.
- THE FLOORS OF ALL MANHOLES SHALL BE SHAPED WITH FLOW CHANNELS SUCH THAT THE MANHOLES WILL BE SELF-CLEANING AND FREE OF AREAS WHERE SOLIDS COULD BE DEPOSITED AS SEWAGE FLOWS THROUGH THE MANHOLE FROM ALL INLET PIPES TO THE OUTLET PIPE. FLOW CHANNELS SHALL BE FORMED TO MATCH THE BOTTOM HALVES OF THE INFLOWING PIPES AND THE OUTFLOWING PIPE AS SHOWN BY THE DRAWINGS EXCEPT FOR INSIDE DROP MANHOLES. FLOW CHANNELS FOR INSIDE DROP MANHOLES SHALL BE CONSTRUCTED AS INDICATED BY THE DRAWING. MANHOLE FLOORS SHALL HAVE SLOPES OF 3 INCHES PER FOOT IN THE AREAS OUTSIDE OF THE FLOW CHANNELS SLOPED TOWARD THE FLOW CHANNELS. PIPES LAID THROUGH MANHOLES SHALL HAVE THE TOP HALF REMOVED TO NEAT LINES FOR THE FULL INSIDE DIAMETER OF THE MANHOLE. MANHOLE FLOORS SHALL THEN BE SHAPED AROUND THE BOTTOM HALF OF THE PIPE WHICH FORMS THE FLOW CHANNEL.
- PIPES INSTALLED WITHIN THE EXCAVATION MADE FOR THE MANHOLE SHALL BE CRADLED WITH CONCRETE TO THE LIMITS OF THE MANHOLE EXCAVATION. WHEN CLAY PIPE IS USED, THE CRADLE SHALL EXTEND TO THE FIRST JOINT OUTSIDE THE MANHOLE. THE CRADLE SHALL BE TERMINATED AT THE CLAY PIPE JOINT IN A MANNER WHICH WILL MAINTAIN THE FLEXIBILITY OF THE JOINT. COST OF CRADLE WITHIN MANHOLE EXCAVATION OR TO CLAY PIPE JOINTS ADJACENT TO MANHOLE SHALL BE INCLUDED IN THE UNIT PRICE BID FOR THE MANHOLE.
- MANHOLE COVER CASTINGS AND MANHOLE FRAME CASTINGS SHALL CONFORM TO THE REQUIREMENTS AS INDICATED IN THE STANDARD SPECIFICATIONS AND AS SHOWN IN THE STANDARD DETAIL DRAWING.
- THE VERTICAL DROP IN INSIDE DROP MANHOLES SHALL NOT EXCEED 2' FOR INFLOWING PIPES. THE CROWNS OF INFLOWING PIPES SHALL NEVER BE SET LOWER THAN THE CROWN OF THE OUTFLOWING PIPE.
- STANDARD MANHOLES AND STANDARD INSIDE DROP MANHOLES SHALL BE BID AS STANDARD MANHOLES FOR THE TYPE AND DIAMETER INDICATED. OUTSIDE DROP MANHOLES SHALL BE BID AS STANDARD OUTSIDE DROP MANHOLES FOR THE TYPE AND DIAMETER INDICATED. ALL MANHOLE DIAMETERS WILL BE 4" UNLESS INDICATED OTHERWISE.
- A BRICK MASONRY COLLAR SHALL BE INSTALLED BETWEEN THE CAST IRON FRAME AND THE CONCENTRIC CONE. THE COLLAR WILL HAVE 8" WALLS AND A VERTICAL HEIGHT OF 6" MINIMUM AND 18" MAXIMUM. A 1" COAT OF MORTAR WILL BE PLASTERED ON THE OUTSIDE OF THE COLLAR.



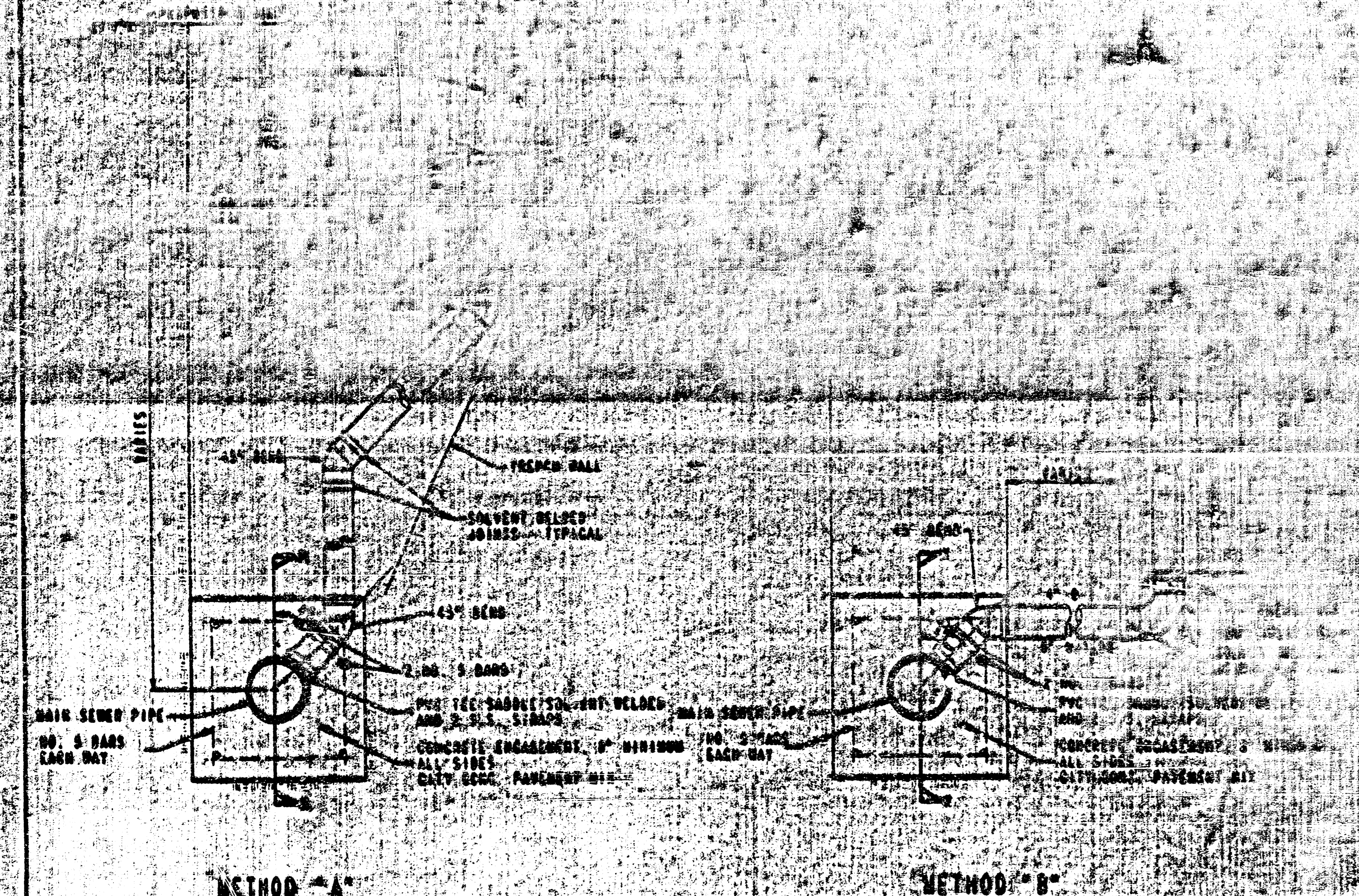
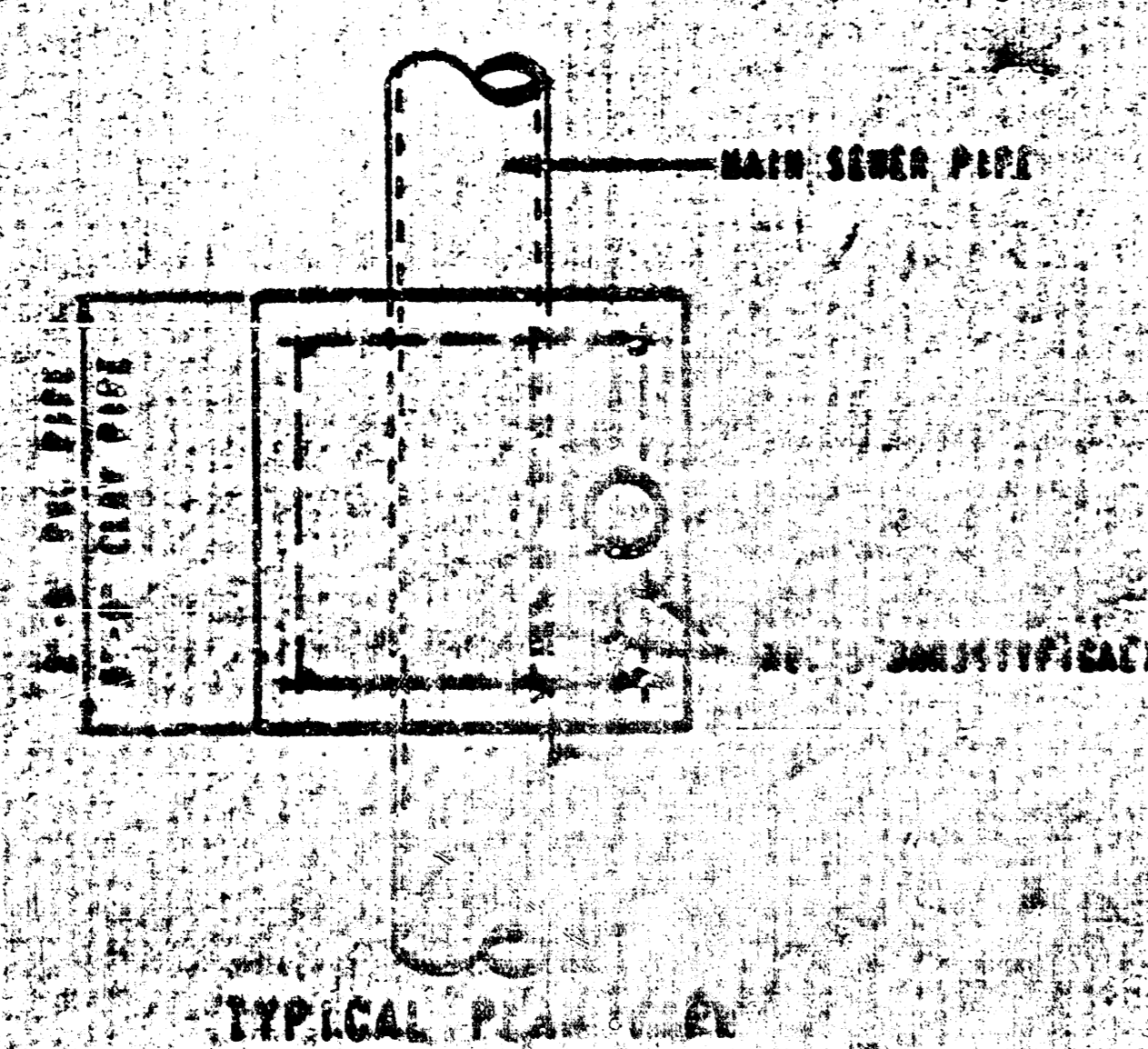
**ALTERNATE CONSTRUCTION
IN UNPAVED AREAS**

REVISED: 6-14-00

MANHOLE DETAILS			
CITY OF BEL AIR, KANSAS			
Design	Checked by	Checked by	4 / 6
Drawn by	Date	Date	Job No.
M.K.E.C.		NOV. 1997	97101_BD

VERTICAL RISER DETAILS
ADOPTED AS STANDARD DESIGN
BY
CITY OF WICHITA, KANSAS
OCTOBER 1952

STANDARD SPECIFICATIONS FOR
 SEWERAGE AND WATER SUPPLY
 SYSTEMS
 CITY OF WICHITA, KANSAS
 DEPARTMENT OF PUBLIC WORKS
 ENGINEERING DIVISION
 1952

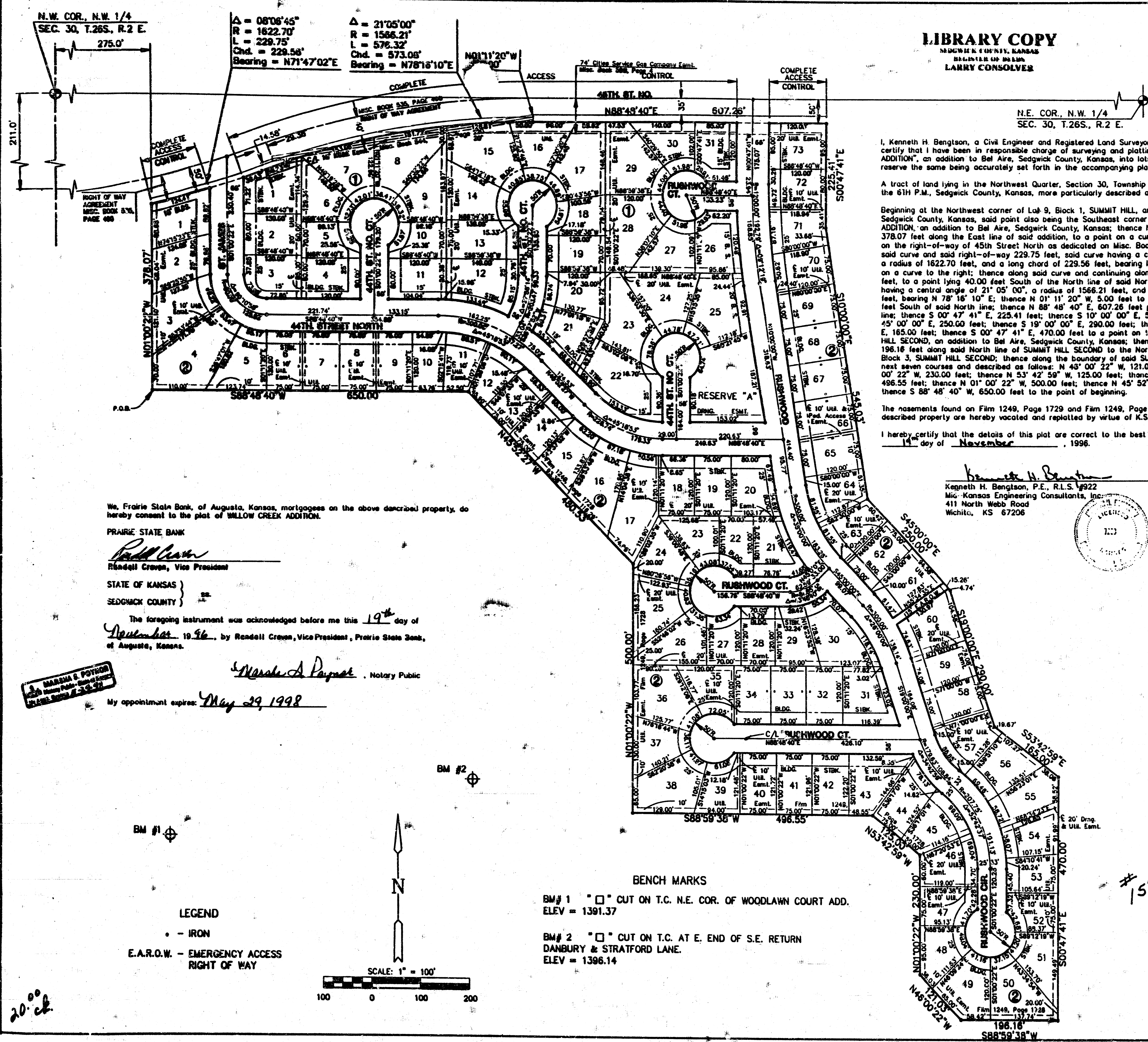


NOTE: RISER PIPE REQUIREMENTS AT MANHOLE SPIDS SHALL BE SHOWN ABOVE

PC72-7

LIBRARY COPY
REGISTERED LAND SURVEYOR
LARRY CONSLVER

FINAL PLAT WILLOW CREEK ADDITION AN ADDITION TO BEL AIRE, SEDGWICK COUNTY, KANSAS



I, Kenneth H. Bengtson, a Civil Engineer and Registered Land Surveyor in Kansas, do hereby certify that I have been in responsible charge of surveying and plotting of "WILLOW CREEK ADDITION", an addition to Bel Aire, Sedgwick County, Kansas, into lots, blocks, streets and a reserve the same being accurately set forth in the accompanying plat and described herein:

A tract of land lying in the Northwest Quarter, Section 30, Township 26 South, Range 2 East of the 6th P.M., Sedgwick County, Kansas, more particularly described as follows:

Beginning at the Northwest corner of Lot 9, Block 1, SUMMIT HILL, an addition to Bel Aire, Sedgwick County, Kansas, said point also being the Southeast corner of BEL AIRE EAST ADDITION, an addition to Bel Aire, Sedgwick County, Kansas; thence N 01° 00' 22" W, 378.07 feet along the East line of said addition, to a point on a curve to the left, said point lying on the right-of-way of 45th Street North as dedicated on Misc. Book 535, Page 490; thence along said curve and said right-of-way 229.75 feet, said curve having a central angle of 08° 06' 45", a radius of 1622.70 feet, and a long chord of 229.56 feet, bearing N 71° 47' 02" E to a point on a curve to the right; thence along said curve and continuing along said right-of-way, 576.32 feet, to a point lying 40.00 feet South of the North line of said Northwest Quarter, said curve having a central angle of 21° 05' 00", a radius of 1566.21 feet, and a long chord of 573.08 feet, bearing N 78° 16' 10" E; thence N 01° 11' 20" W, 5.00 feet to a point lying 35.00 feet South of said North line; thence N 88° 48' 40" E, 607.26 feet parallel with said North line; thence S 00° 47' 41" E, 225.41 feet; thence S 10° 00' 00" E, 545.03 feet; thence S 45° 00' 00" E, 250.00 feet; thence S 19° 00' 00" E, 290.00 feet; thence S 53° 42' 59" E, 165.00 feet; thence S 00° 47' 41" E, 470.00 feet to a point on the North line of SUMMIT HILL SECOND, an addition to Bel Aire, Sedgwick County, Kansas; thence S 88° 59' 38" W, 196.16 feet along said North line of SUMMIT HILL SECOND to the Northwest corner Lot 33, Block 3, SUMMIT HILL SECOND; thence along the boundary of said SUMMIT HILL for the next seven courses and described as follows: N 49° 00' 22" W, 121.03 feet; thence N 01° 00' 22" W, 230.00 feet; thence N 53° 42' 59" W, 125.00 feet; thence S 88° 59' 38" W, 486.55 feet; thence N 01° 00' 22" W, 500.00 feet; thence N 45° 52' 27" W, 480.53 feet; thence S 88° 48' 40" W, 650.00 feet to the point of beginning.

The easements found on Firm 1249, Page 1729 and Firm 1249, Page 1728 within the above described property are hereby vacated and replatted by virtue of K.S.A. 12-512(p).

I hereby certify that the details of this plat are correct to the best of my knowledge and belief, this 14th day of November, 1996.

Know all men by these presents that we the undersigned property owners of the land as above set forth in the Civil Engineer's and Registered Land Surveyor's Certificate, have caused the same to be surveyed and plotted into lots, blocks, streets and a reserve the same to be known as "WILLOW CREEK ADDITION", an addition to Bel Aire, Sedgwick County, Kansas. The streets and Reserve A are dedicated to and for the use of the public. Easements for the construction and maintenance of public utilities and drainage, are hereby granted to the public. Reserve A is platted for construction and maintenance of a public park. The Reserve shall be owned and maintained by the governing body. All abutters right of access to or from 45th Street North over and across the North line of WILLOW CREEK ADDITION, are hereby granted to the City of Bel Aire. The access easement is hereby granted to and for the use of the public, and shall not be obstructed.

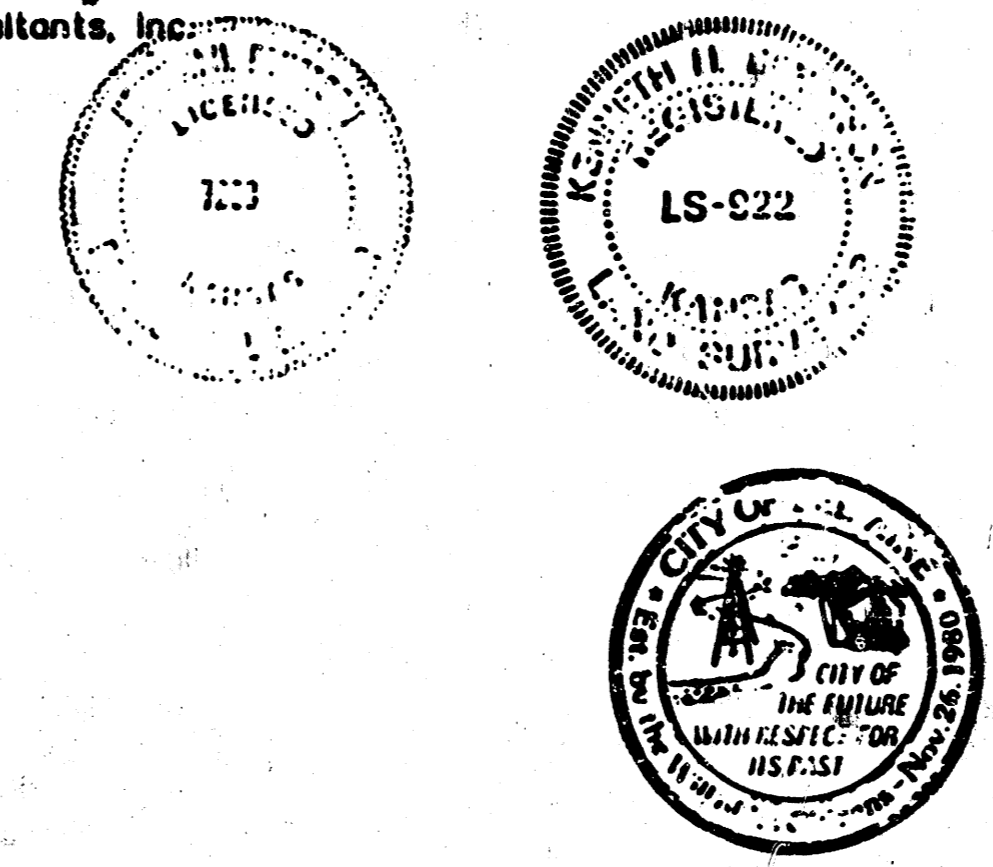
SUMMIT HILL, INC.
Philip M. Snodgrass
Philip M. Snodgrass, Resident

STATE OF KANSAS)
SEDGWICK COUNTY) ss.
The foregoing instrument was acknowledged before me this 19th day of November, 1996, by Philip M. Snodgrass, President Summit Hill, Inc.

KATHERINE S. BAUMAN
NOTARY PUBLIC
STATE OF KANSAS
Katherine S. Bauman, Notary Public
Katherine S. Bauman

My appointment expires: 1-24-99

Kenneth H. Bengtson
Kenneth H. Bengtson, P.E., R.L.S. #922
M.E. Kansas Engineering Consultants, Inc.
411 North Webb Road
Wichita, KS 67206



This plat of "WILLOW CREEK ADDITION", has been submitted to and approved by the Bel Aire Planning Commission, Bel Aire, Kansas.
Dated this 14th day of October, 1996.

BEL AIRE PLANNING COMMISSION
Beverly K. Dunning Chairman
Betty L. Martin Secretary
Beverly K. Dunning
Betty L. Martin

This plat approved and all dedications shown thereon, if any, accepted by the City Council of the City of Bel Aire, Kansas, this 19th day of November, 1996.

Harold Smith Mayor
Sherry L. Cuyler City Clerk
Harold Smith
Sherry L. Cuyler

Entered on transfer record this 24th day of December, 1996.
Grant W. Skelton County Clerk
Grant W. Skelton

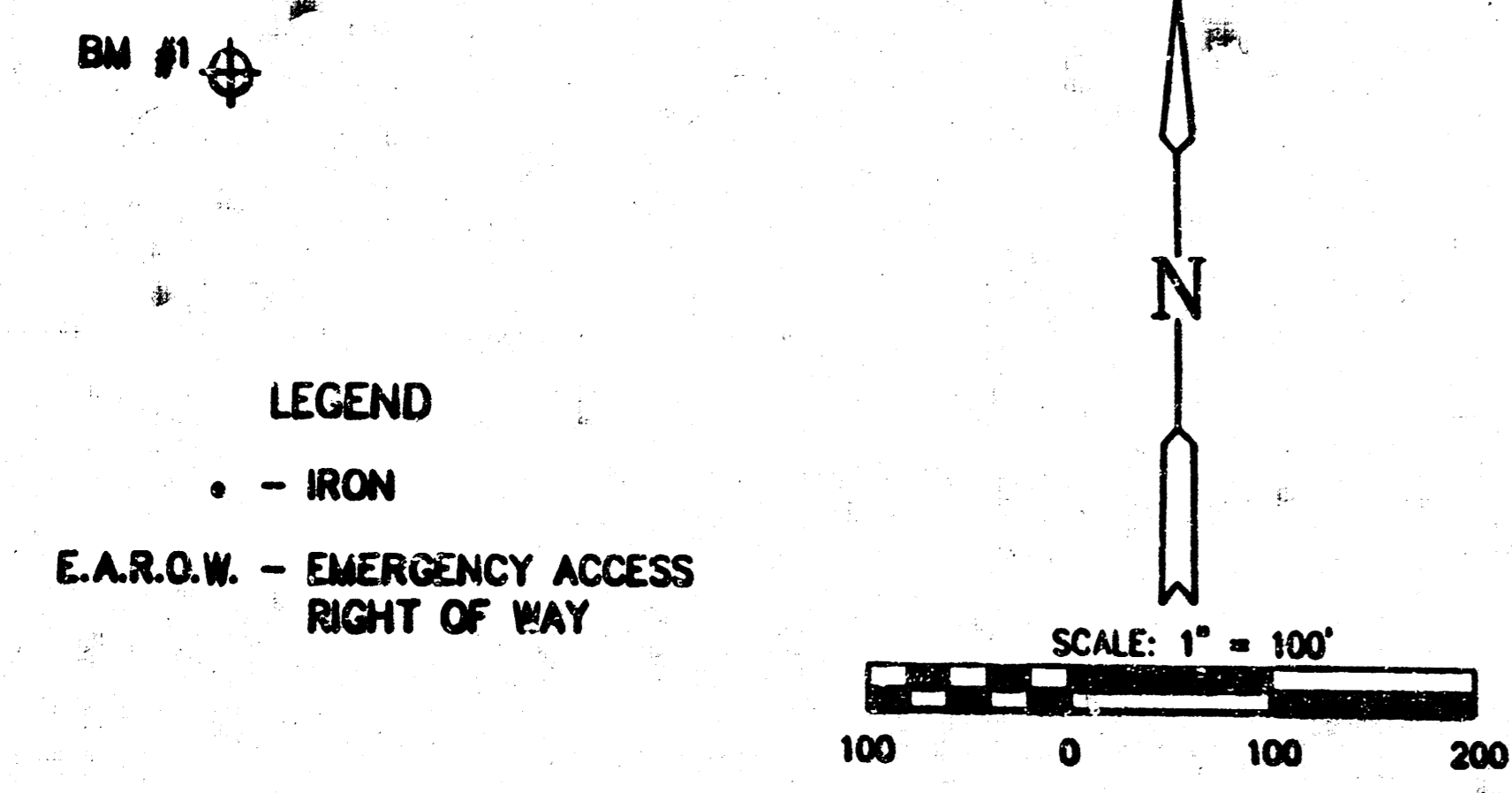
STATE OF KANSAS)
SEDGWICK COUNTY) ss.
This is to certify that this instrument was filed for record in the Register of Deeds office this 27th day of December, 1996, AT 8:00 AM.

Pat Kettler
Pat Kettler Register of Deeds
Pat Kettler
Deputy
Diana Manheimer

We, Prairie State Bank, of Augusta, Kansas, mortgagees on the above described property, do hereby consent to the plat of WILLOW CREEK ADDITION.

PRAIRIE STATE BANK
Randall Crown
Randall Crown, Vice President

STATE OF KANSAS)
SEDGWICK COUNTY) ss.
The foregoing instrument was acknowledged before me this 19th day of November, 1996, by Randall Crown, Vice President, Prairie State Bank, of Augusta, Kansas.
Margaret A. Payson, Notary Public
My appointment expires: May 29, 1998



PC72-7