

# SANITARY SEWER IMPROVEMENTS

to serve

## Willow Place Addition

Project Number

1051 PPS 607861

CITY OF WICHITA, KANSAS

Michael E. Lindebak, P.E. City Engineer

### GENERAL NOTES:

1. Contractor will be required to provide notice to utility companies a minimum of twenty-four (24) hours prior to any excavation, as follows:

Kansas One-Call 687-2470

The Contractor must notify the following in case of an emergency:

Cox Communications	262-0661
K.P.L. Gas Service Company	383-8550
Kansas Gas & Electric Company	383-8600
Peoples Gas Company	942-8350
Southwestern Bell Telephone Company	1-800-344-7233
City of Wichita Water Dept.	268-4908
City of Wichita Traffic Engineering	269-4446

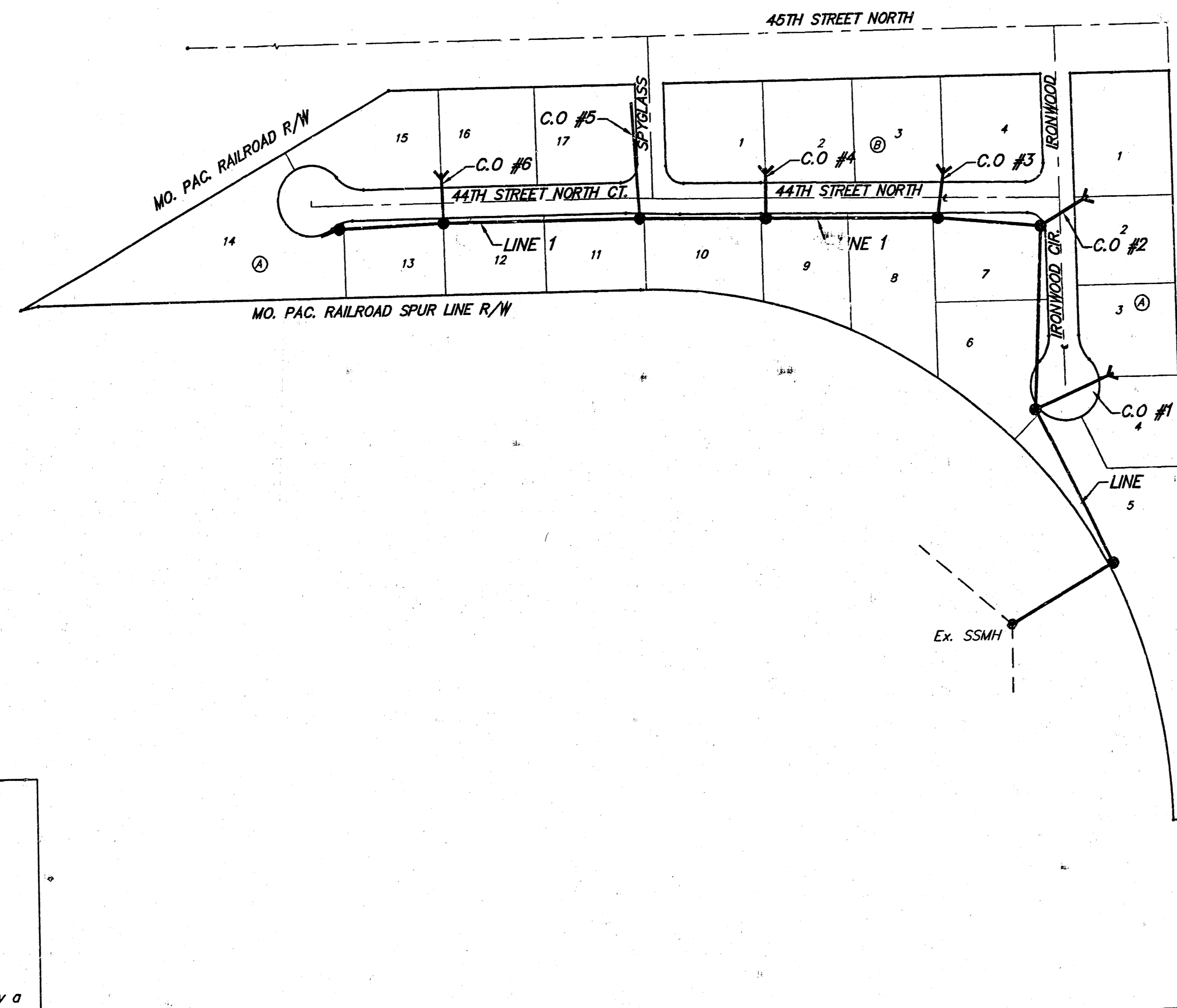
2. Underground utility service lines and overhead utility pole lines are to be adjusted as necessary by others prior to construction unless the plans specifically call for their adjustment by the Contractor or unless the plans specifically identify a utility to be adjusted by its owner during construction. Existing utilities and their location, as shown on the plans, represent the best information obtainable for design. The Contractor will be required to work around existing utilities within the right-of-way which do not conflict with proposed construction.

3. Trees and shrubs in public right-of-way which are in direct conflict with proposed new construction shall be removed by the Contractor with the Engineer's approval. Trees and shrubs which are not in direct conflict with proposed new construction shall be saved and protected from damage.

4. The Contractor shall give all property owners and/or tenants of developed property abutting the construction of this project a minimum of ten (10) days advance notice prior to start of construction.

5. The Contractor shall be responsible for preserving property irons. The Contractor will be required to re-establish any property irons which are damaged or destroyed by his construction operations. Such irons shall be re-established by a licensed land surveyor in accordance with state laws.

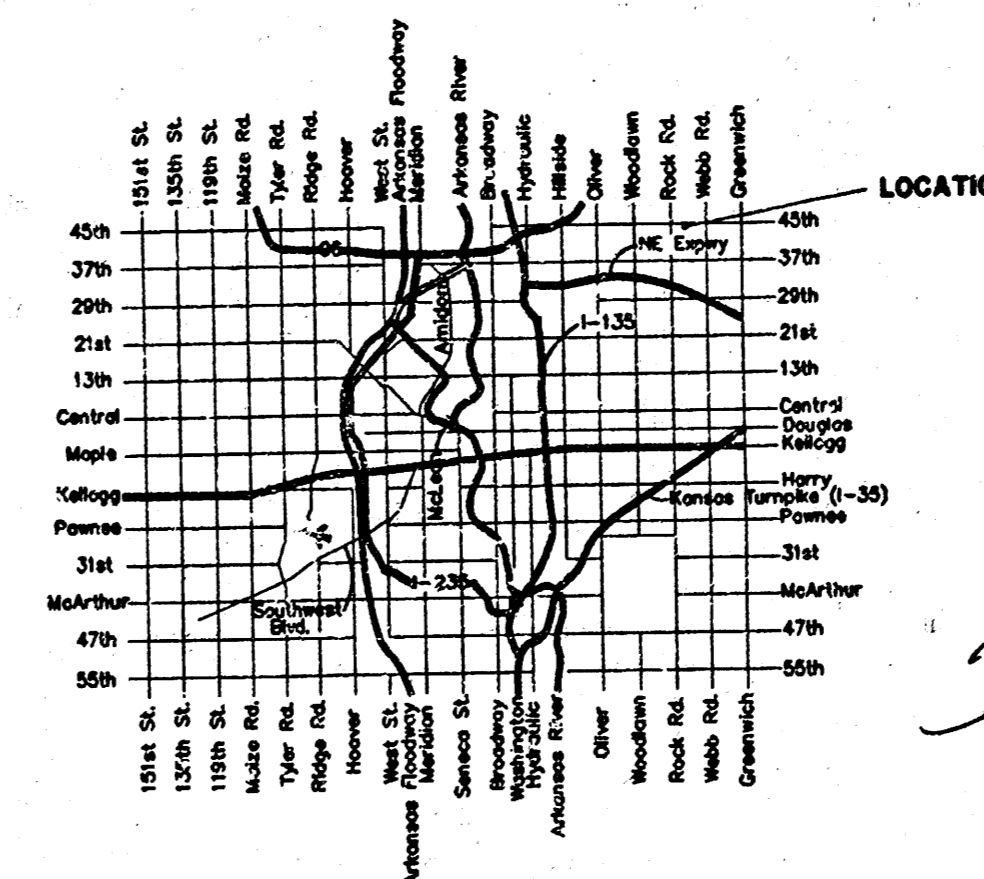
6. Contractor shall grade around exposed manholes at a 1:1 slope. Cost of dirt, labor, equipment, etc. to be incidental to cost of manhole.



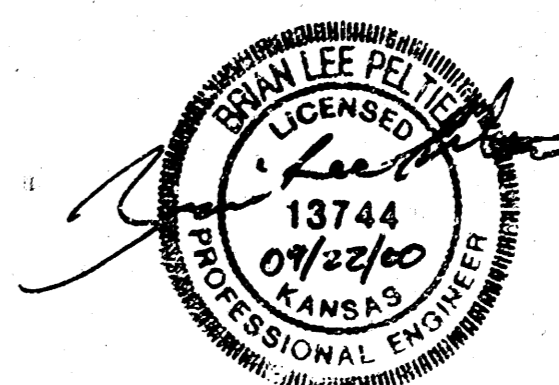
Scale: 1" = 100'

### Sheet Index

Title Sheet	1
Line 1	2,3
Standard Manhole Detail	4
Ring & Cover Detail	5
Copy of Plat	6



Vicinity Map



APPROVED AS NOTED  
BY CITY ENGINEER OF WICHITA

Sanitary Sewer UR # 9/22/00

NOTE TO CONTRACTORS

Inspection and testing for this project is to be provided by a Licensed Consulting Engineering Firm under contract with the Owner/Developer. Said inspection to be in accordance with the City of Wichita standard construction engineering practices and certified by a Licensed Professional Engineer. No work shall be performed in dedicated easements or public right-of-way by the Contractor without such inspection nor shall any work be commenced without written authorization by the City Engineer. All Construction and Materials shall comply with the City of Wichita Specifications and Standards (on file and available in the City Engineer's Office).

Booked  
P-162  
12-1-00  
RDL

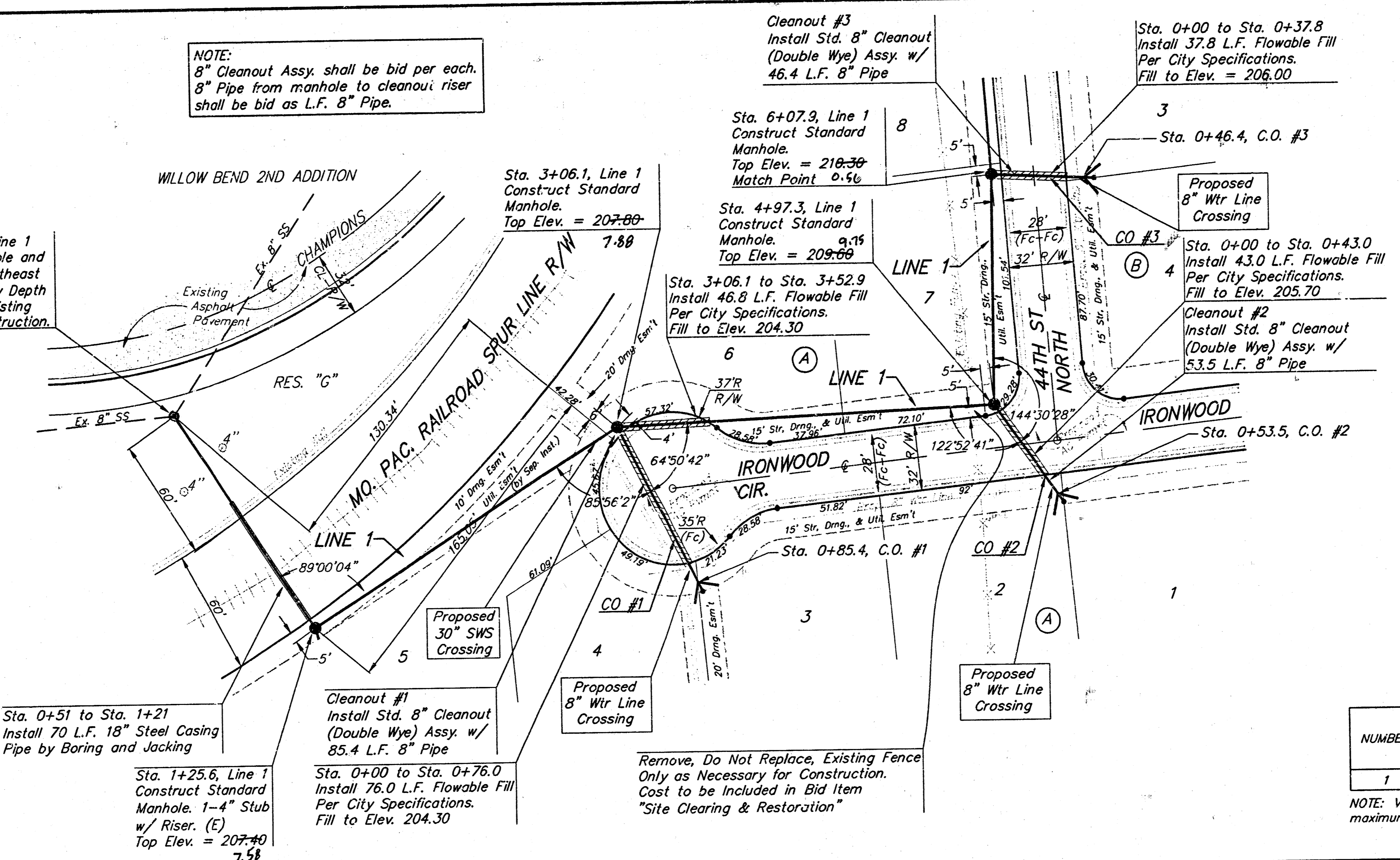
As Built 11/00 KK

**BAUGHMAN COMPANY P.A.**  
ENGINEERING, SURVEYING, & PLANNING  
316-282-7271 • 315 ELLIS • WICHITA, KANSAS 67211

16-04-01-16

NOTE:  
8" Cleanout Assy. shall be bid per each.  
8" Pipe from manhole to cleanout riser  
shall be bid as L.F. 8" Pipe.

Sta. 0+00, Begin Line 1  
Core Existing Manhole and  
Extend 8" Pipe Northeast  
Contractor to Verify Depth  
and Location of Existing  
Stub Prior to Construction.



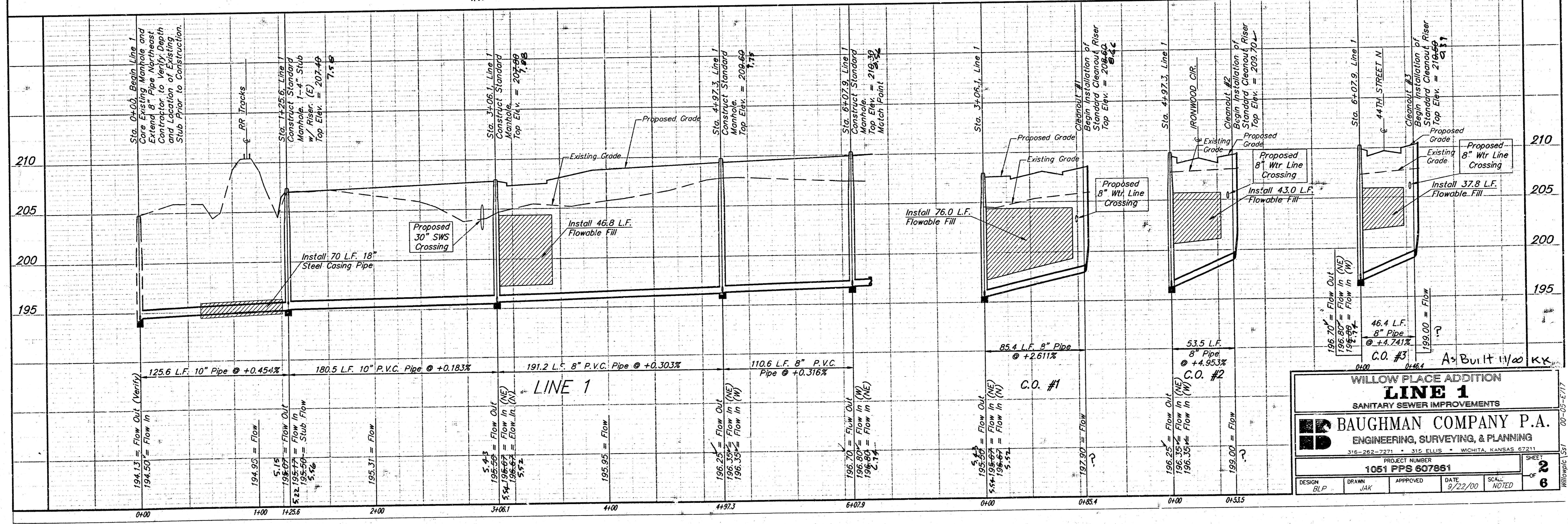
NOTE:  
Each 4" service line shall extend  
5' from the 8"x4" double wye  
fitting. This shall be incidental  
to the 8" cleanout.

SCALE:  
1" = 40' HORIZONTAL  
1" = 5' VERTICAL  
• = IRON

SEWER SERVICE TABLE

NUMBER	TYPE	LOCATION			FOR INFORMATION ONLY	
		LOT NO.	BLOCK NO.	LINE NO.	STATION/DIRECTION	APPROXIMATE LENGTH 4" PIPE VERTICAL HORIZONTAL
1	4" Stub	5	A	1	1+25.6/Rt.	8' 5'

NOTE: Vertical Riser Pipe shall be extended to 2' minimum above ground water elevation and 4' maximum below proposed ground elevation.



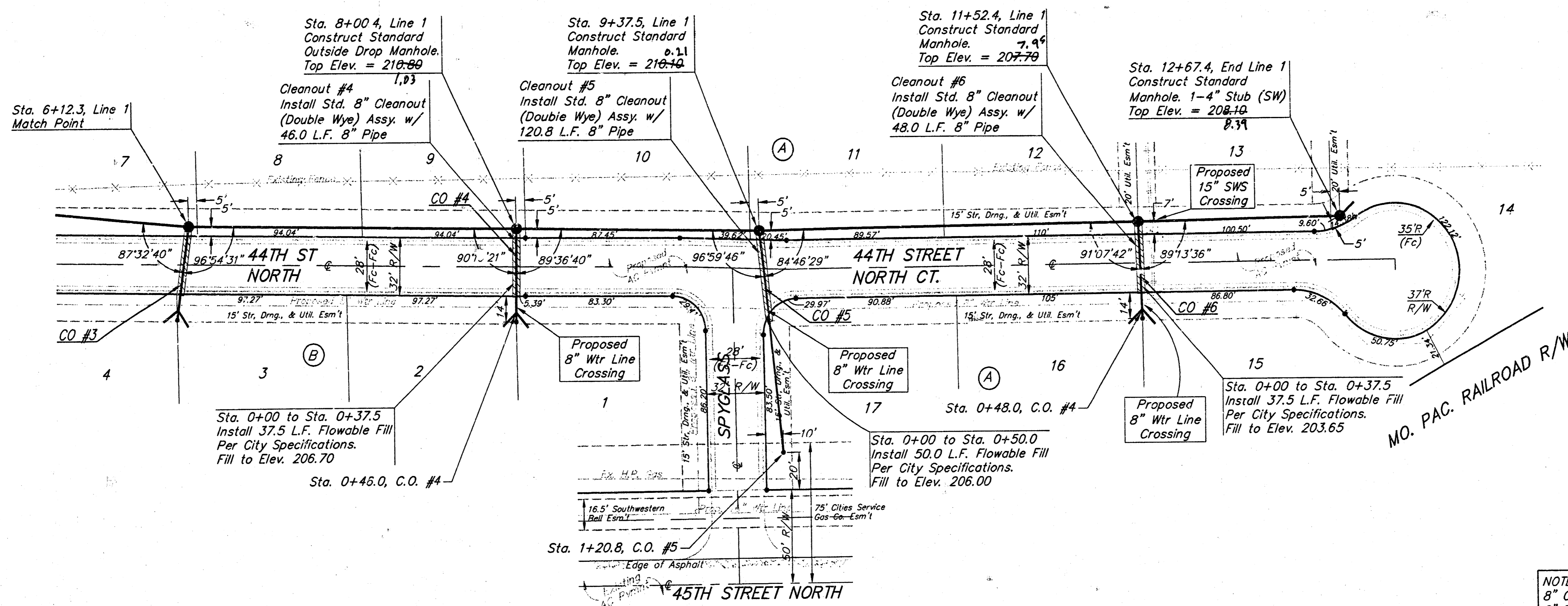
WILLOW PLACE ADDITION  
**LINE 1**  
SANITARY SEWER IMPROVEMENTS

**BAUGHMAN COMPANY P.A.**  
ENGINEERING, SURVEYING, & PLANNING  
316-262-7271 • 115 ELLIS • WICHITA, KANSAS 67211

PROJECT NUMBER  
**1051 PFS 607861**

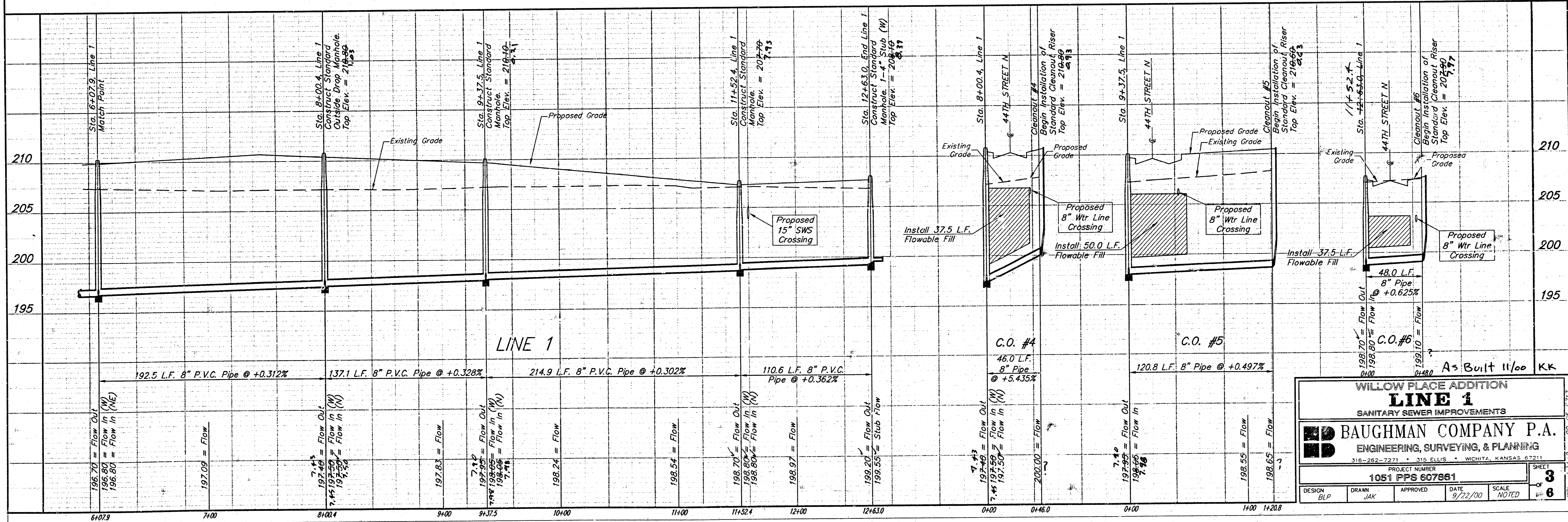
DESIGN: BLP    DRAWN: JAK    APPROVED: [Signature]    DATE: 9/22/00    SCALE: NOTED

SHEET **2** OF **6**



SCALE:  
 1" = 40' HORIZONTAL  
 1" = 5' VERTICAL  
 • = IRON

NOTE:  
 8" Cleanout Assy. shall be bid per each.  
 8" Pipe from manhole to cleanout riser  
 shall be bid as L.F. 8" Pipe.



WILLOW PLACE ADDITION  
**LINE 1**  
 SANITARY SEWER IMPROVEMENTS

**BAUGHMAN COMPANY P.A.**  
 ENGINEERING, SURVEYING, & PLANNING  
 316-252-7271 • 315 ELLIS • WICHITA, KANSAS 67211

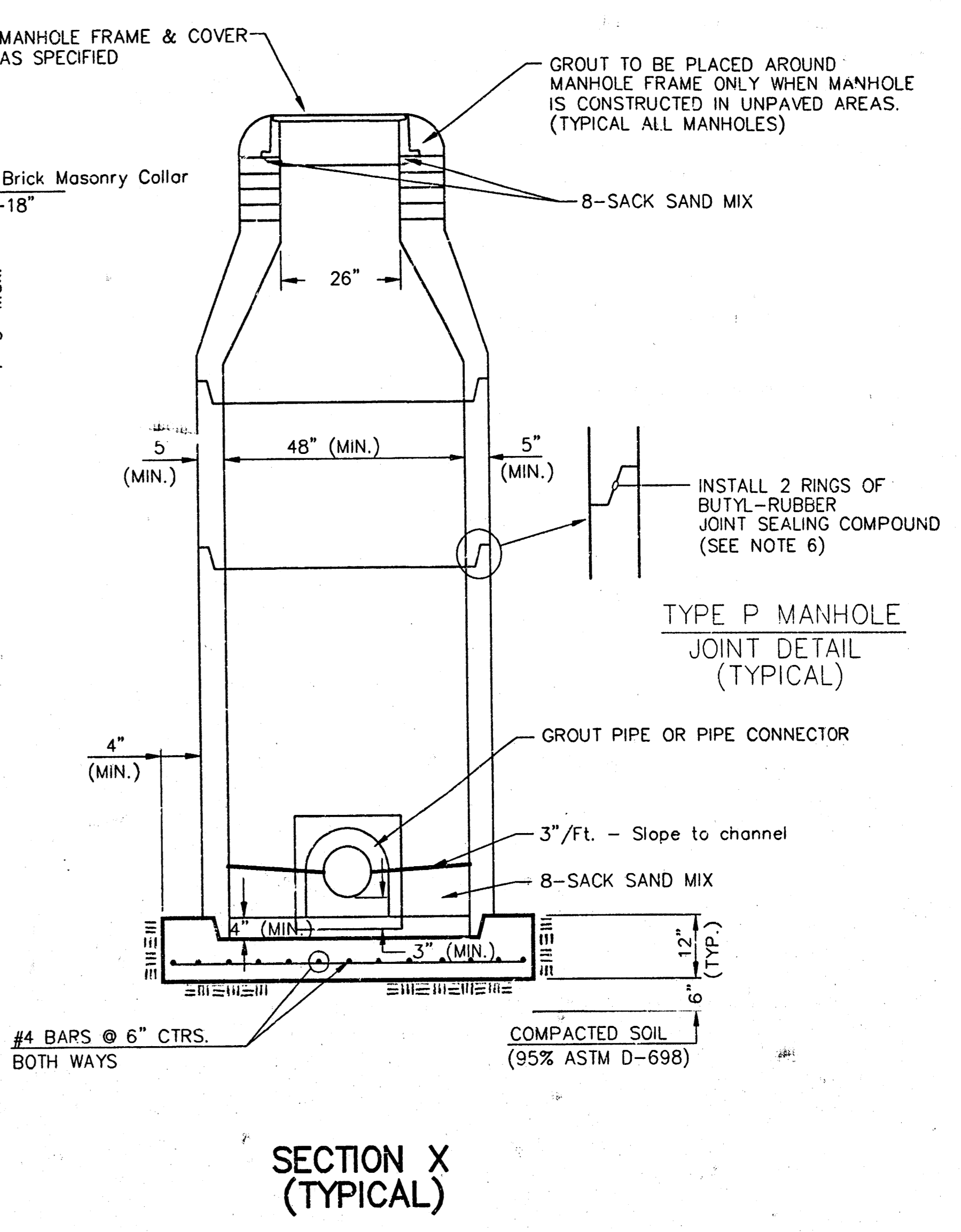
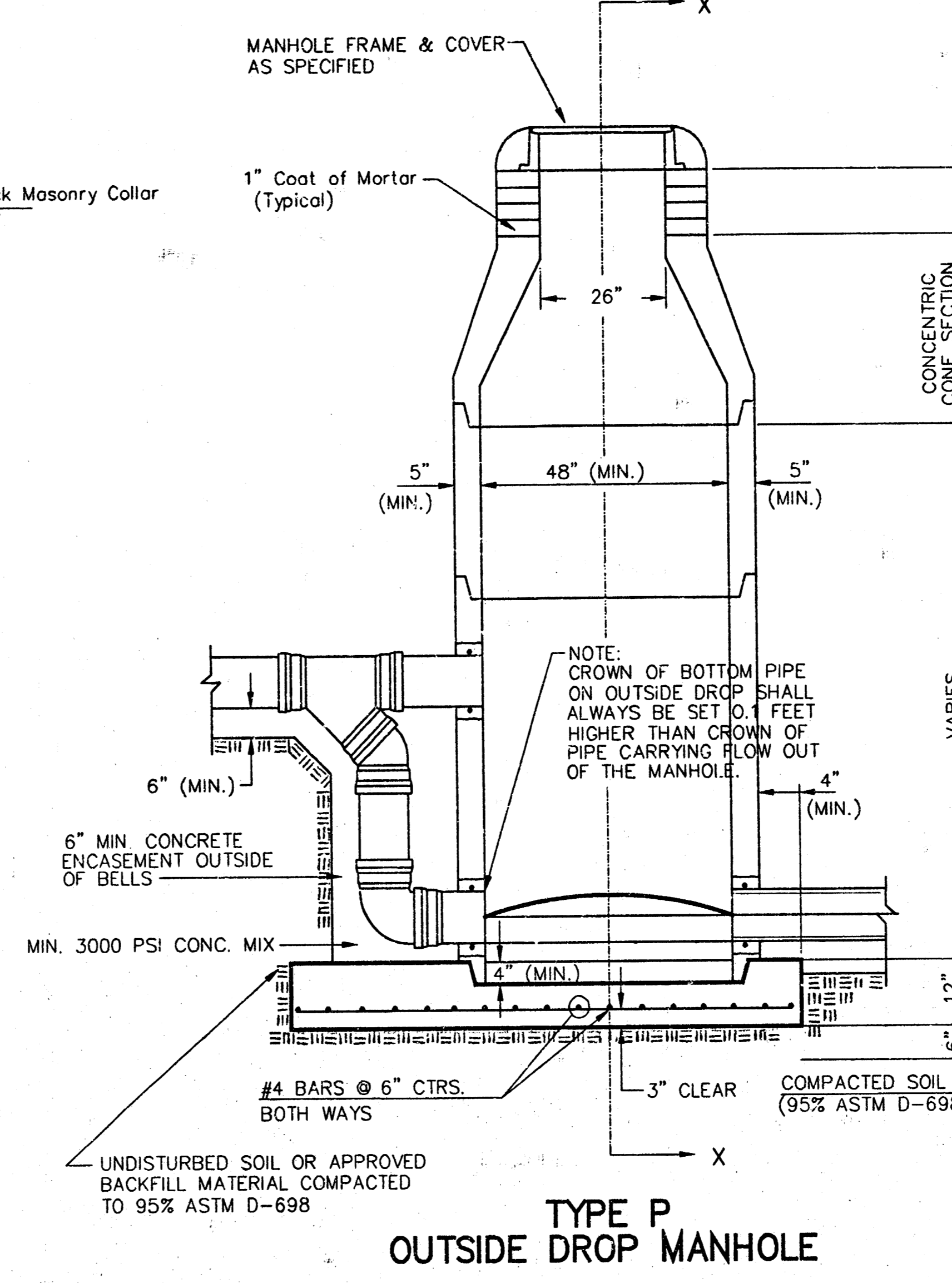
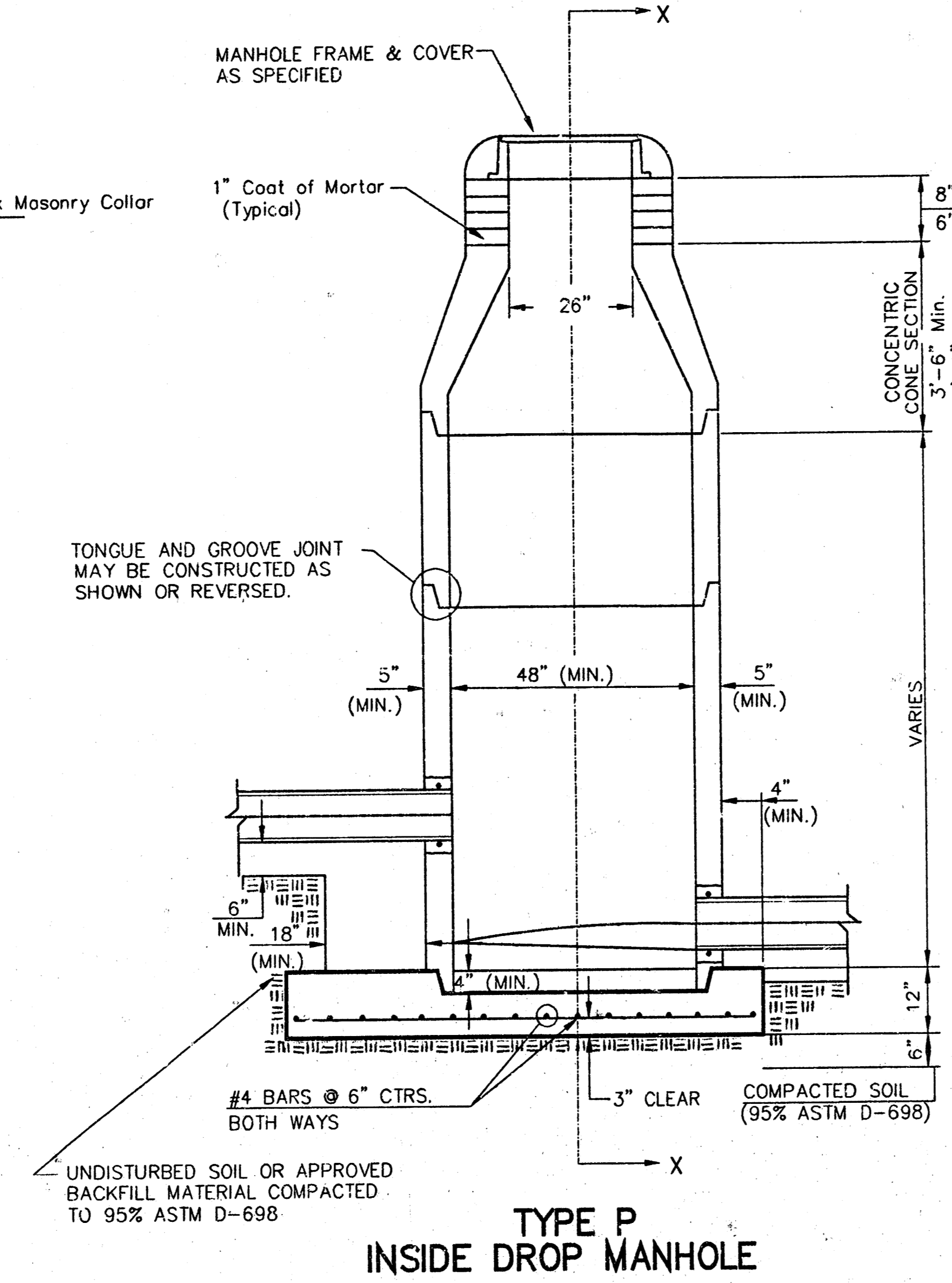
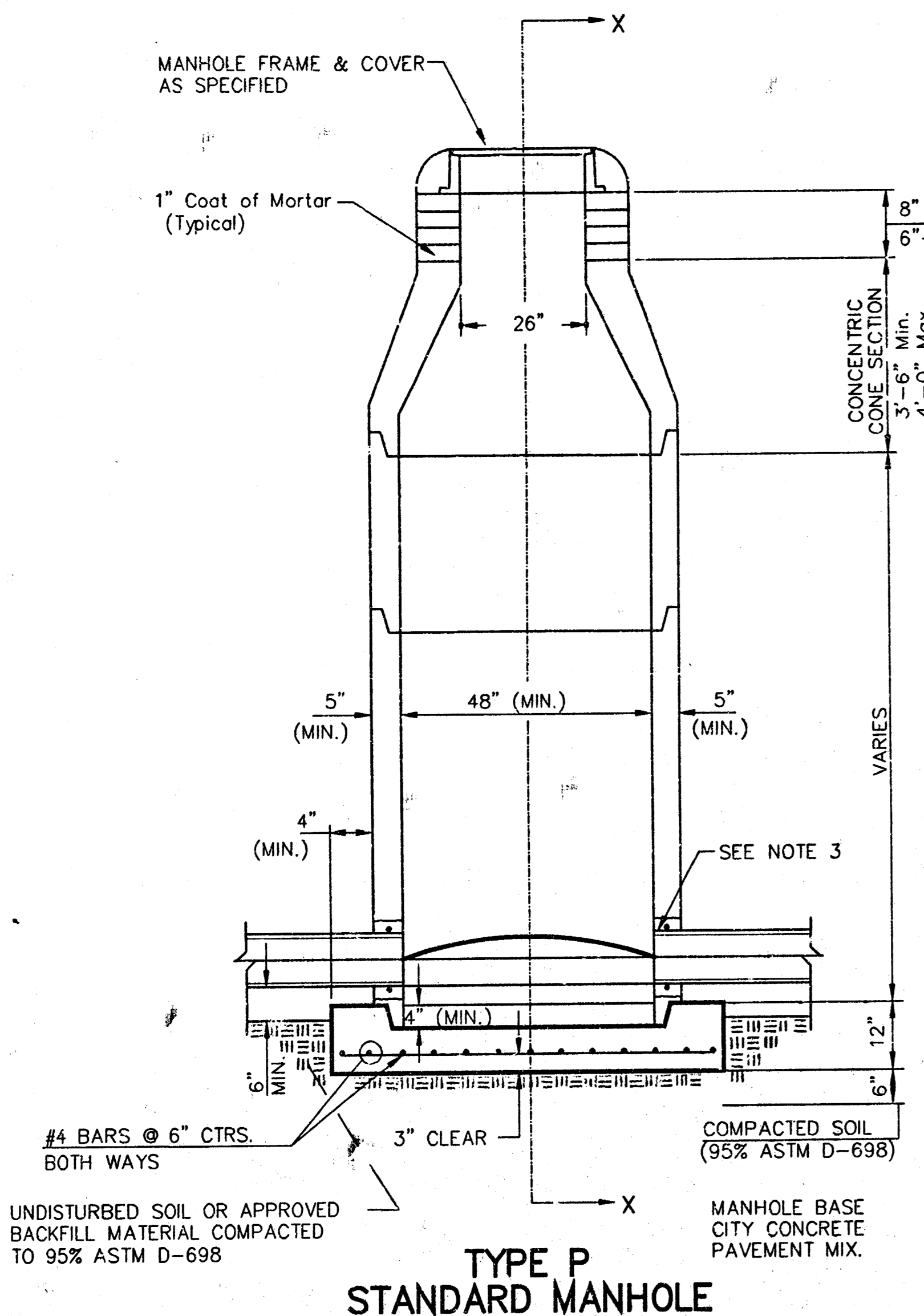
PROJECT NUMBER  
**1051 PPS 607861**

DESIGN: BLP    DRAWN: JAK    APPROVED: [Signature]    DATE: 9/22/00    SCALE: NOTED

SHEET **3** OF **8**

As Built 11/00 KK

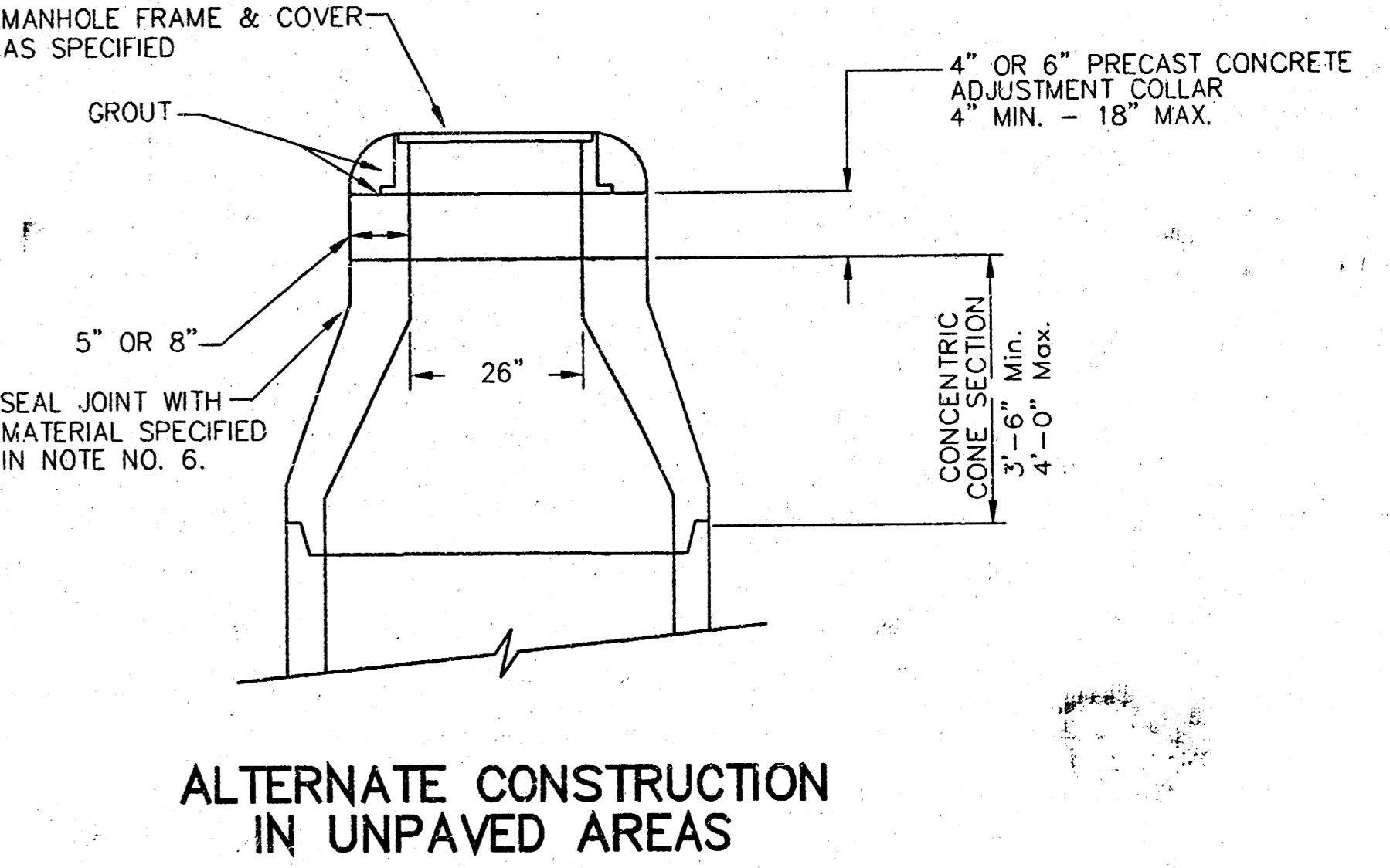
# SEWER APPURTENANCES DETAILS



- GENERAL NOTES**
- PRECAST MANHOLE NOTES**
1. ALL PRECAST CONCRETE MANHOLE SECTIONS SHALL CONFORM TO THE LATEST REVISIONS OF A.S.T.M. C478 AS MODIFIED BY THE SPECIFICATIONS.
  2. NON-SHRINK GROUT SHALL BE NON-METALLIC TYPE.
  3. APPROVED FLEXIBLE WATERSTOP GASKETS SHALL BE INSTALLED TO JOIN THE SEWER TO THE MANHOLE WALL WHEN A.B.S. COMPOSITE PIPE OR P.V.C. PIPE IS USED. FOR OTHER TYPES OF PIPE THE SEWER SHALL BE GROUDED IN PLACE WITH NON-SHRINK GROUT. THE SEWER PIPE SHALL BE SUPPORTED WITH CONCRETE ENCASUREMENT A MINIMUM OF 3 FEET FROM THE MANHOLE WALL AND TO THE FIRST JOINT FOR V.C.P. SUCH THAT THE JOINT REMAINS FLEXIBLE.
  4. ALL INSIDE SURFACES OF THE CONCRETE MANHOLE WHICH WOULD BE EXPOSED TO SEWER GAS SHALL BE COATED WITH 2 COATS TNEMC SERIES 66 HI-BUILD EPOXOLINE, DRY THICKNESS OF 8 MILS (MIN.)
  5. EXTERIOR MANHOLE WALLS SHALL BE COATED WITH 1 COAT MOBILARMA 633 BITUMINOUS COATING.
  6. JOINT SEALING COMPOUND SHALL BE KENT SEAL NO. 2 OR APPROVED EQUAL.
  7. PRECAST MANHOLES SHALL BE SET AT LEAST 4 INCHES INTO THE MANHOLE BASE.
  8. TOP OF MANHOLE FLOOR SLAB SHALL BE AT LEAST 3 INCHES BELOW THE FLOW LINE OF THE OUTLET PIPE TO INSURE SUFFICIENT MINIMUM THICKNESS OF SHAPED INVERT.
  9. LIFTING HOLES SHALL BE FILLED WITH NON-SHRINK GROUT AND THE INTERIOR SURFACE COATED AS SPECIFIED.
  10. MORTAR USED IN MASONRY CONSTRUCTION SHALL CONTAIN 8 SACKS OF CEMENT PER CUBIC YARD. CONCRETE USED IN MANHOLE BASES SHALL CONFORM TO THE REQUIREMENTS OF CONCRETE FOR CONCRETE PAVEMENT CONSTRUCTION AS SPECIFIED IN THE CITY STANDARD PAVING SPECIFICATIONS USING CITY CONCRETE PAVEMENT MIX WITHOUT AIR ENTRAINING ADMIXTURE. MORTAR SHALL BE PLACED AROUND THE MANHOLE RING AS SHOWN ON THE DRAWINGS WHEN MANHOLES ARE CONSTRUCTED IN UNPAVED AREAS. MANHOLES CONSTRUCTED WHERE PIPE SIZES ARE SMALLER THAN 24" SHALL HAVE AN INSIDE DIAMETER OF 4". MANHOLES CONSTRUCTED WHERE PIPE SIZES ARE 24" OR LARGER SHALL HAVE AN INSIDE DIAMETER OF 5". COMPLETED MANHOLE SHALL BE WITHOUT LEAKS AND WATER TIGHT.

11. REINFORCING STEEL SHALL BE INSTALLED IN THE MANHOLE BASES AND SHALL CONSIST OF NO. 4 BARS PLACED ON 6" CENTERS IN BOTH DIRECTIONS. THE MANHOLE BASE REINFORCEMENT SHALL BE PLACED AT LEAST 3" ABOVE THE BOTTOM OF THE MANHOLE BASE. ALL COSTS FOR FURNISHING AND INSTALLING REINFORCING STEEL SHALL BE INCLUDED IN THE UNIT PRICE BID FOR THE MANHOLE.
12. OPENINGS SHALL BE CUT INTO THE MANHOLE WALL WHEN OUTSIDE DROPS ARE CONSTRUCTED ON EXISTING MANHOLES. SUCH OPENINGS CUT INTO EXISTING MANHOLES SHALL BE AS SMALL AS PRACTICAL TO FACILITATE INSTALLING AND GROUDED THE NEW PIPE IN PLACE. WATERSTOP GASKETS SHALL BE USED WITH P.V.C. AND A.B.S. COMPOSITE PIPE. THE NEW PIPE SHALL BE GROUDED INTO THE OPENING USING AN APPROVED NON-SHRINK GROUT FOR THE FULL MANHOLE WALL THICKNESS. THE EXTERIOR OF THE COMPLETED CONNECTION SHALL BE SEALED WITH AN APPROVED BITUMINOUS COATING SUCH THAT THE CONNECTION WILL BE WATER TIGHT. FLOOR OF MANHOLE SHALL BE MODIFIED TO FORM NEW FLOW CHANNEL FOR THE NEW CONNECTION AS INDICATED BY THE DRAWING. THIS WORK, INCLUDING MODIFICATION OF MANHOLE FLOOR, SHALL BE PAID FOR AT THE UNIT PRICE BID FOR OUTSIDE DROP STACK CONSTRUCTED ON EXISTING MANHOLE.
13. THE FLOORS OF ALL MANHOLES SHALL BE SHAPED WITH FLOW CHANNELS SUCH THAT THE MANHOLES WILL BE SELF CLEANING AND FREE OF AREAS WHERE SOLIDS COULD BE DEPOSITED AS SEWAGE FLOWS THROUGH THE MANHOLE FROM ALL INLET PIPES TO THE OUTLET PIPE. FLOW CHANNELS SHALL BE FORMED TO MATCH THE BOTTOM HALVES OF THE INFLOWING PIPES AND THE OUTFLOWING PIPE AS SHOWN BY THE DRAWINGS EXCEPT FOR INSIDE DROP MANHOLES. FLOW CHANNELS FOR INSIDE DROP MANHOLES SHALL BE CONSTRUCTED AS INDICATED BY THE DRAWING. MANHOLE FLOORS SHALL HAVE SLOPES OF 3 INCHES PER FOOT IN THE AREAS OUTSIDE OF THE FLOW CHANNELS SLOPED TOWARD THE FLOW CHANNELS. PIPES LAID THROUGH MANHOLES SHALL HAVE THE TOP HALF REMOVED TO NEAT LINES FOR THE FULL INSIDE DIAMETER OF THE MANHOLE. MANHOLE FLOORS SHALL THEN BE SHAPED AROUND THE BOTTOM HALF OF THE PIPE WHICH FORMS THE FLOW CHANNEL.
14. PIPES INSTALLED WITHIN THE EXCAVATION MADE FOR THE MANHOLE SHALL BE CRADLED WITH CONCRETE TO THE LIMITS OF THE MANHOLE EXCAVATION. WHEN CLAY PIPE IS USED, THE CRADLE SHALL EXTEND TO THE FIRST JOINT OUTSIDE THE MANHOLE. THE CRADLE SHALL BE TERMINATED AT THE CLAY PIPE JOINT IN A MANNER WHICH WILL MAINTAIN THE FLEXIBILITY OF THE JOINT. COST OF CRADLE WITHIN MANHOLE EXCAVATION OR TO CLAY PIPE JOINTS ADJACENT TO MANHOLE SHALL BE INCLUDED IN THE UNIT PRICE BID FOR THE MANHOLE.

15. MANHOLE COVER CASTINGS AND MANHOLE FRAME CASTINGS SHALL CONFORM TO THE REQUIREMENTS AS INDICATED IN THE STANDARD SPECIFICATIONS AND AS SHOWN IN THE STANDARD DETAIL DRAWING.
16. THE VERTICAL DROP IN INSIDE DROP MANHOLES SHALL NOT EXCEED 2' FOR INFLOWING PIPES SIZED 12" OR SMALLER AND 2' FOR INFLOWING PIPES LARGER THAN 12". THE CROWNS OF INFLOWING PIPES SHALL NEVER BE SET LOWER THAN THE CROWN OF THE OUTFLOWING PIPE.
17. STANDARD MANHOLES AND STANDARD INSIDE DROP MANHOLES SHALL BE BID AS STANDARD MANHOLES FOR THE TYPE AND DIAMETER INDICATED. OUTSIDE DROP MANHOLES SHALL BE BID AS STANDARD OUTSIDE DROP MANHOLES FOR THE TYPE AND DIAMETER INDICATED. ALL MANHOLE DIAMETERS WILL BE 4" UNLESS INDICATED OTHERWISE.
18. A BRICK MASONRY COLLAR SHALL BE INSTALLED BETWEEN THE CAST IRON FRAME AND THE CONCENTRIC CONE. THE COLLAR WILL HAVE 8" WALLS AND A VERTICAL HEIGHT OF 6" MINIMUM AND 18" MAXIMUM. A 1" COAT OF MORTAR WILL BE PLASTERED ON THE OUTSIDE OF THE COLLAR. THE USE OF PRE-CAST CONCRETE SPACERS FOR MANHOLE TOP ADJUSTMENT IS ALSO ALLOWED.



CITY OF WICHITA  
**STD. MANHOLE DETAILS**  
 SEWER APPURTENANCES

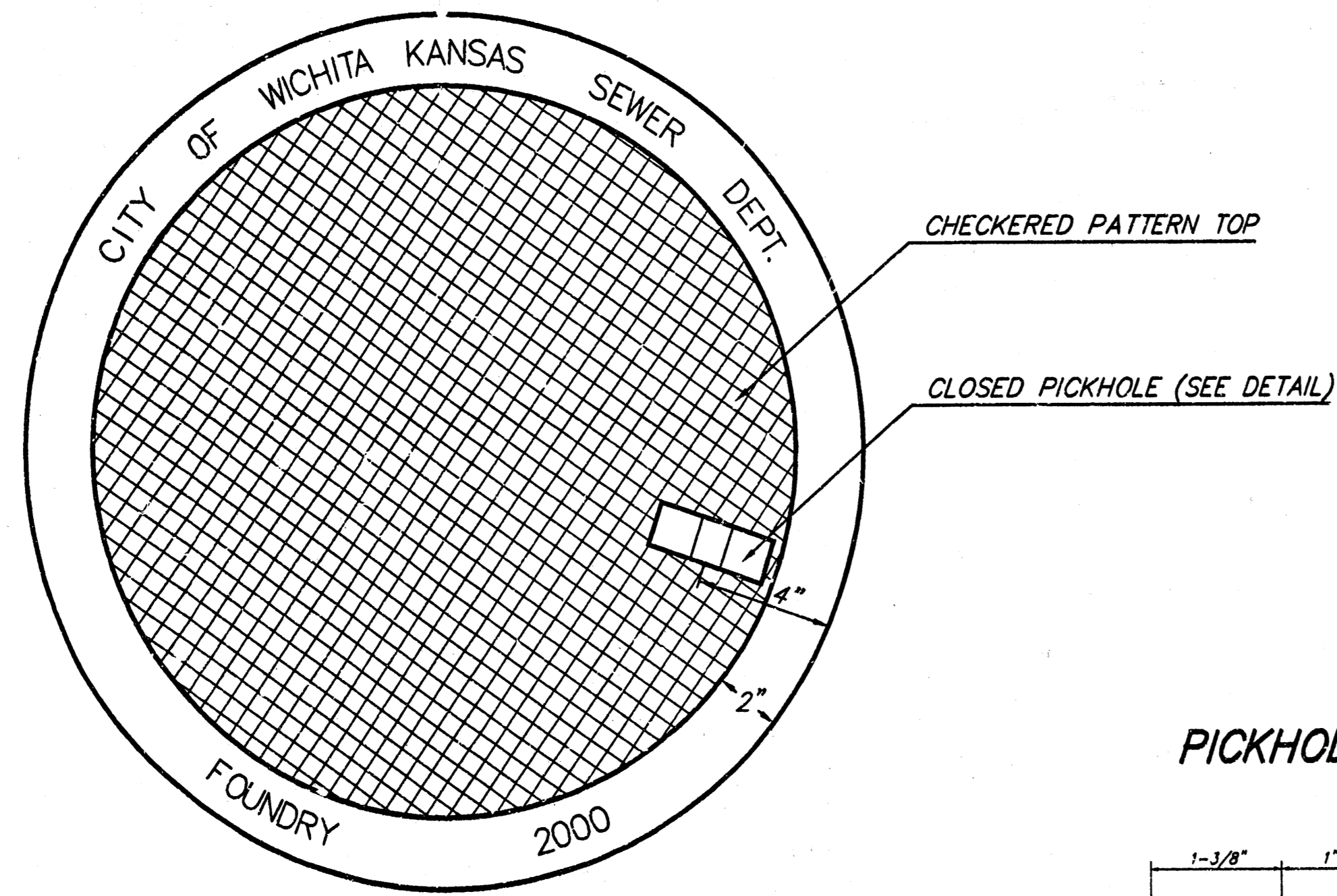
**BAUGHMAN COMPANY P.A.**  
 ENGINEERING, SURVEYING, & PLANNING  
 316-262-2727 • 315 ELLIS • WICHITA, KANSAS 67211

PROJECT NUMBER  
**1051 PPS 607881**

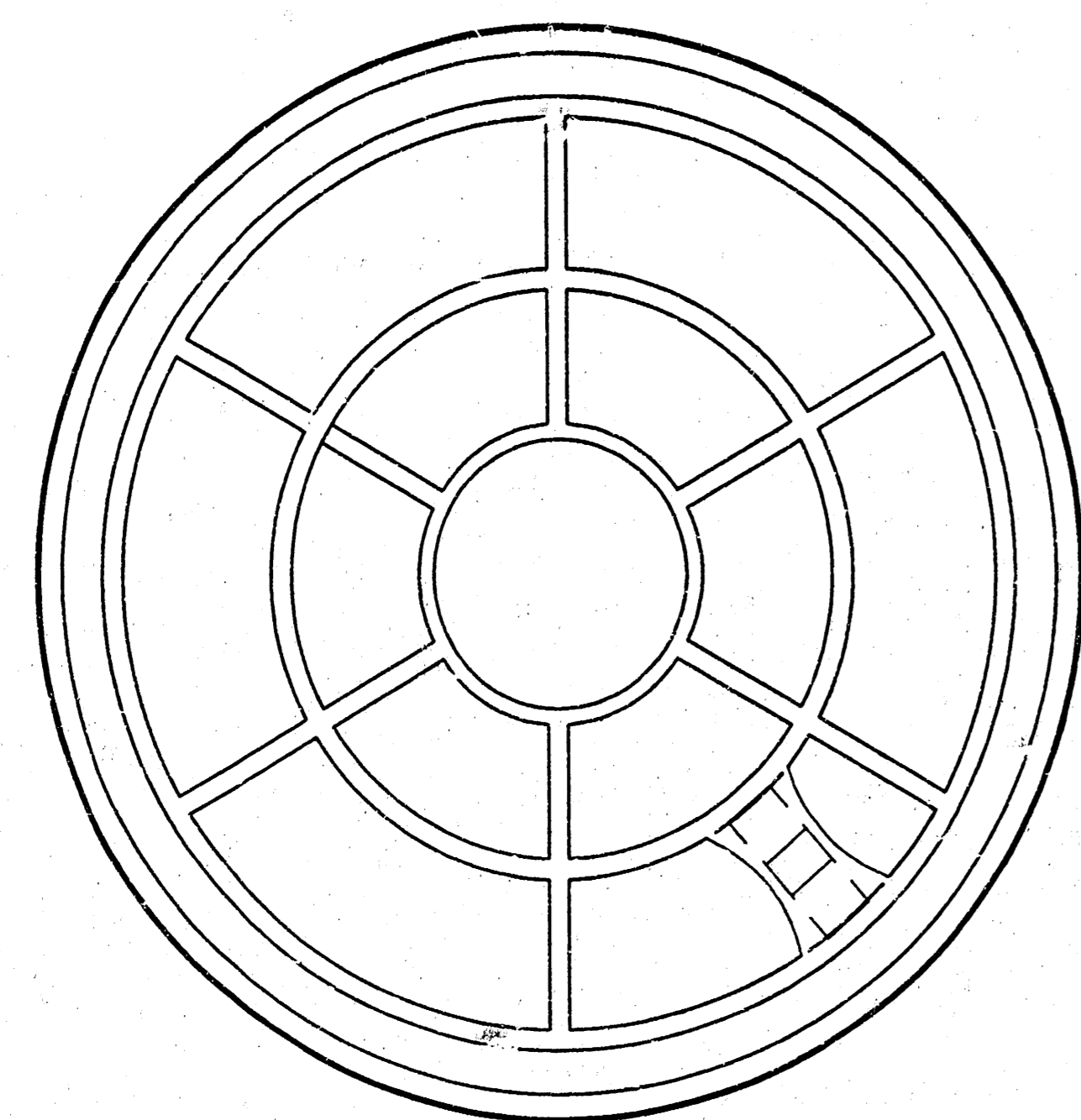
DESIGN STAFF    DRAWN STAFF    DATE 9/22/00    SCALE NONE

SHEET **4** OF **6**

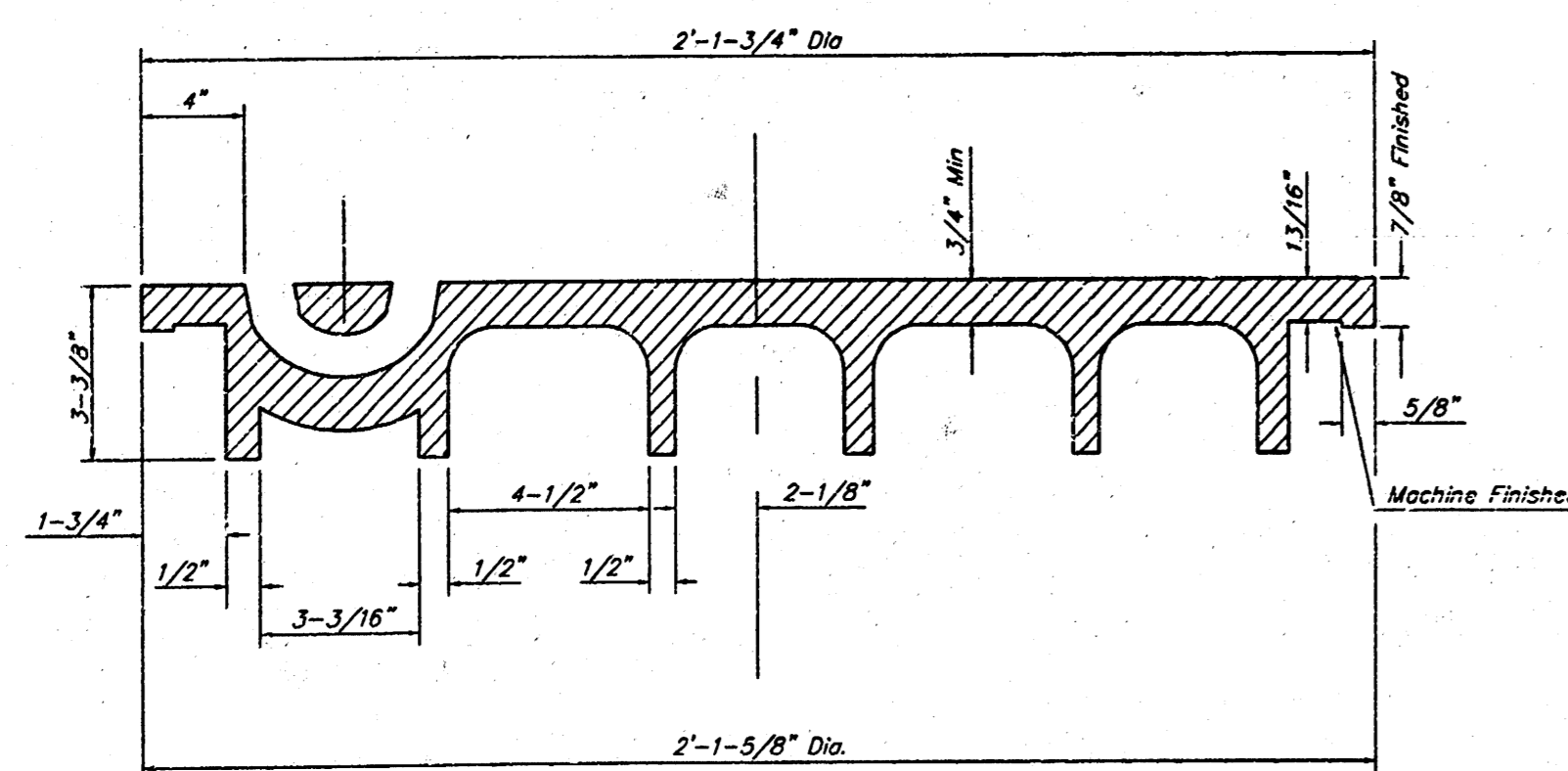
**MANHOLE COVER**  
Weight = 180 Lbs.



TOP VIEW

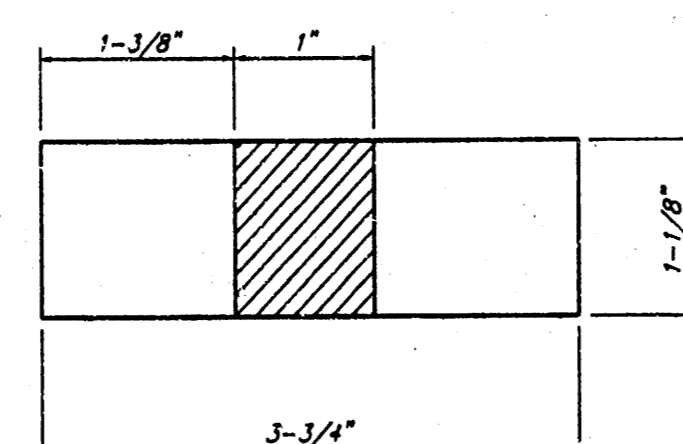


BOTTOM VIEW

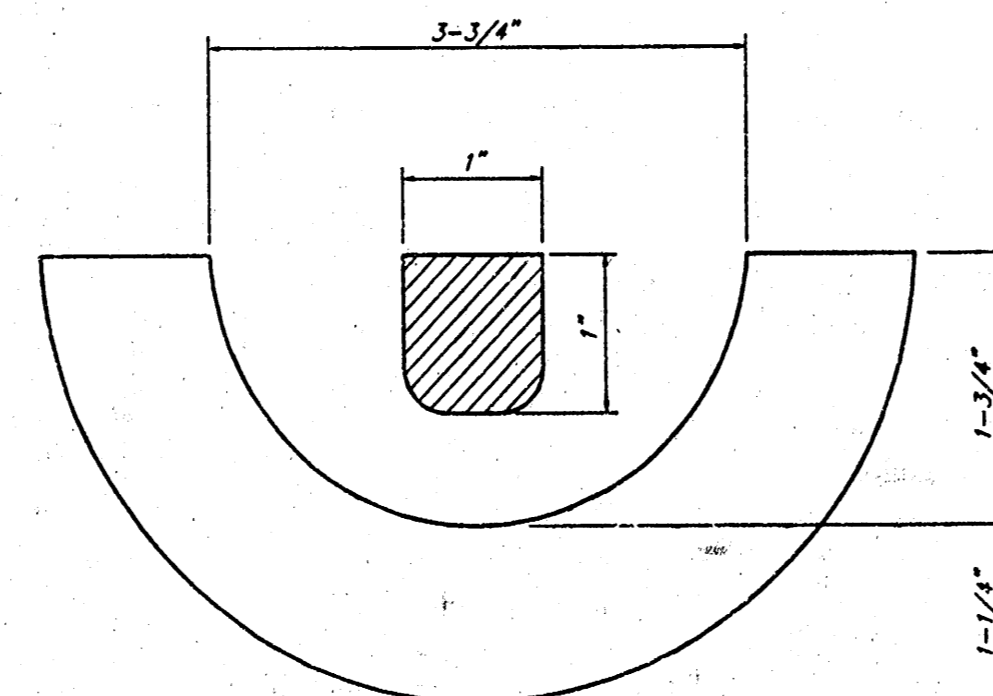


SECTION VIEW

PICKHOLE DETAIL



TOP VIEW

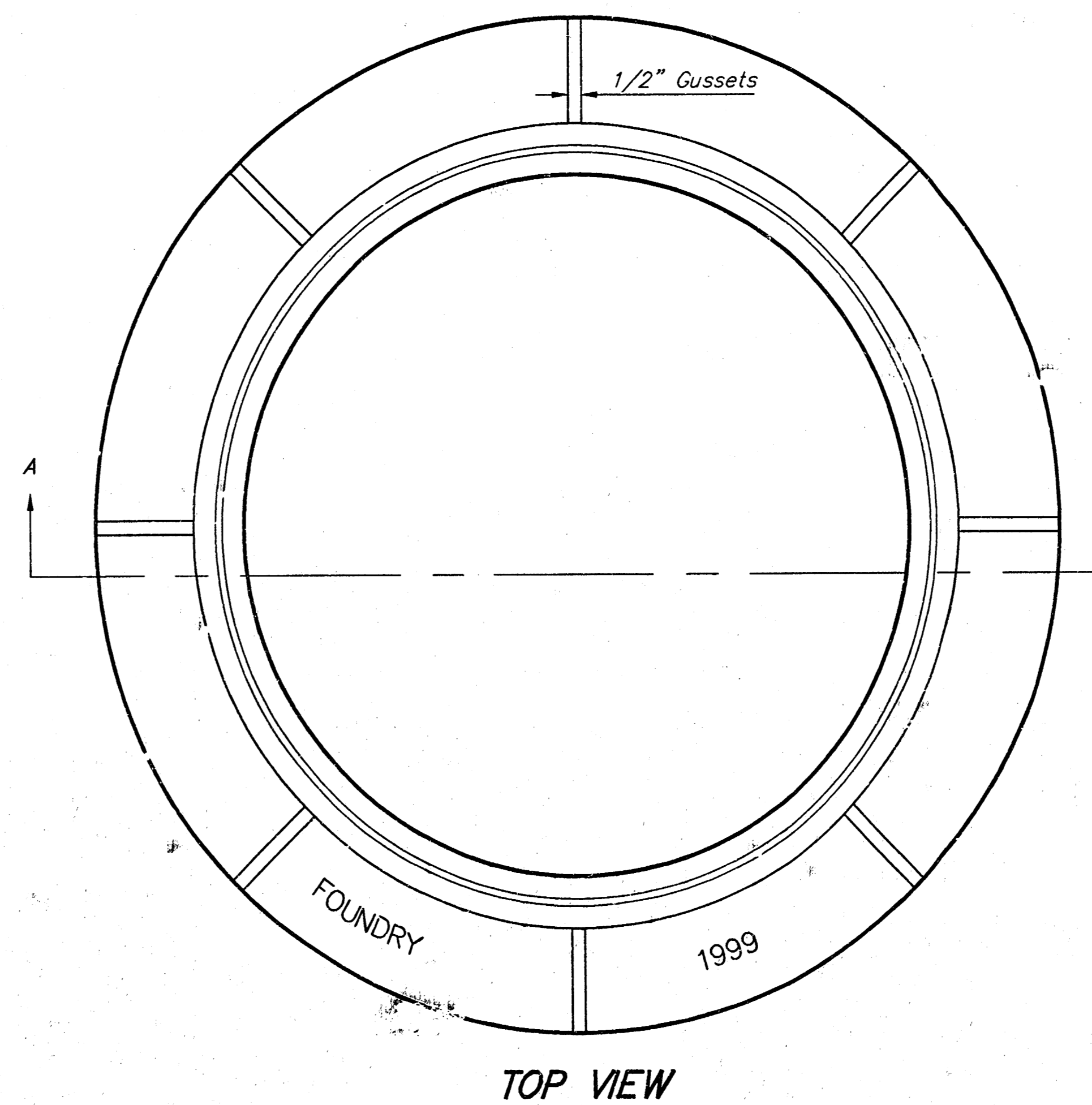


SECTION VIEW

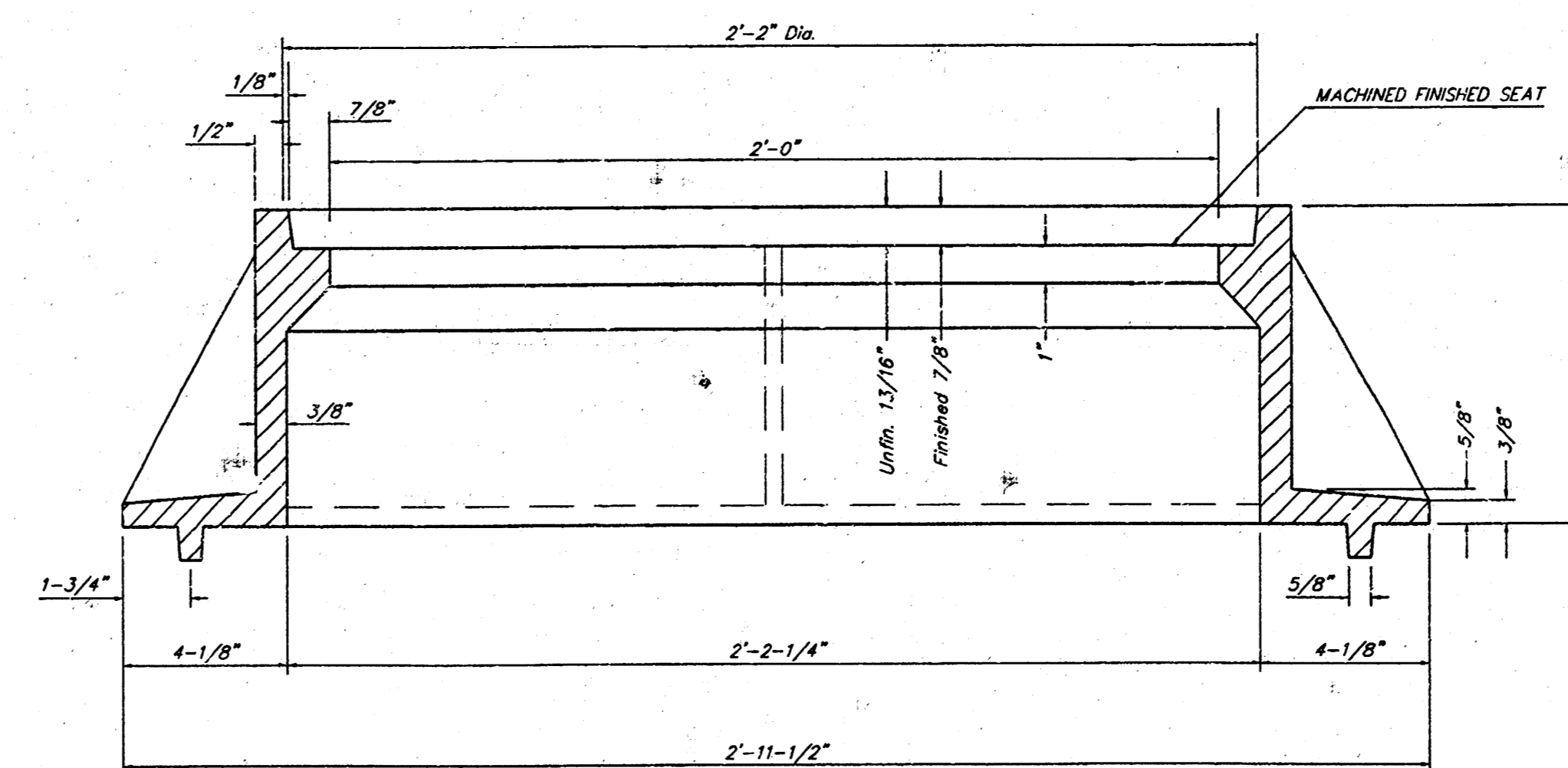
# MANHOLE FRAME AND COVER DETAIL

ADOPTED AS STANDARD DESIGN BY  
CITY OF WICHITA, KANSAS

**MANHOLE FRAME**  
Weight = 145 Lbs.



TOP VIEW



SECTION A-A

## GENERAL NOTES

MANHOLE CASTINGS SHALL BE MANUFACTURED USING GOOD QUALITY GRAY IRON CONFORMING TO CLASS 30 OF A.S.T.M. DESIGNATION A-48. DIMENSIONS AND WEIGHTS SHOWN ON THE DETAILED DRAWINGS SHALL BE CONSIDERED AS MINIMUM REQUIREMENTS AND ANY DEVIATIONS FROM THE DIMENSIONS SHOWN MUST BE SPECIFICALLY APPROVED. THE FINISHED CASTINGS SHALL BE OF UNIFORM QUALITY, FREE FROM BLOWHOLES, POROSITY, HARD SPOTS, SHRINKAGE DISTORTIONS OR OTHER DEFECTS.

MANHOLE CASTINGS SHALL BE COATED WITH AN ASPHALT PAINT RESULTING IN A SMOOTH, TOUGH AND TENACIOUS COATING WHICH IS NOT BRITTLE OR TACKY.

MANHOLE CASTINGS SHALL BE MANUFACTURED SUCH THAT A COVER MANUFACTURED BY ANY ONE FOUNDRY WILL FIT INTERCHANGEABLY INTO A FRAME MANUFACTURED BY ANOTHER FOUNDRY AND STILL MEET ALLOWABLE CLEARANCES AND NON-ROCKING REQUIREMENTS. THIS WILL REQUIRE MANUFACTURING OF THE MATCHING FACES ON THE COVER AND THE FRAME TO CLOSE TOLERANCES.

THE OUTSIDE CIRCUMFERENCE OF THE VERTICAL FACE OF THE COVER AND THE INSIDE CIRCUMFERENCE OF THE VERTICAL FACE IN THE FRAME RECESS SHALL BE MANUFACTURED TO TOLERANCES SUCH THAT THE CLEARANCE BETWEEN THE COVER AND FRAME WILL NOT EXCEED 1/8" AT ANY POINT AROUND THE CIRCUMFERENCE OF THE COVER. THE SEATING SURFACES BETWEEN THE COVER AND FRAME SHALL BE MACHINED SUCH AS THESE SURFACES SHALL MAKE FULL CONTACT FOR THEIR FULL CIRCUMFERENCE TO PRECLUDE THE COVER FROM ROCKING IN THE FRAME.

THE MANHOLE FRAME AND COVER SHALL BE MARKED WITH LETTERING INDICATING THE NAME OF THE MANUFACTURER AND THE YEAR WHEN THE COVER OR FRAME WAS CAST. THE COVER SHALL BE FURTHER IDENTIFIED WITH REGARDS TO OWNERSHIP USING LETTERS AT LEAST 1 INCH IN HEIGHT. THIS IDENTIFICATION SHALL BE "CITY OF WICHITA SEWER DEPARTMENT". THE WORD DEPARTMENT MAY BE ABBREVIATED. THE TEXTURE OF THE TOP SURFACE OF THE COVER SHALL BE MANUFACTURED IN A CHECKERED PATTERN DESIGN AS INDICATED ON THE DRAWINGS. SMOOTH BLOCKOUTS SHALL BE UTILIZED TO HIGHLIGHT THE LETTERING ON THE COVER SURFACE. THE TOTAL AREA OF SMOOTH SURFACE BLOCKOUT SHALL NOT EXCEED THE AREA AS INDICATED ON THE DRAWING. POSITIONING OF SMOOTH BLOCKOUTS AND LETTERING MAY VARY FROM THAT SHOWN ON THE DETAILED DRAWING.

MANHOLE FRAME AND COVER DETAIL					
ADOPTED AS STANDARD DESIGN BY CITY OF WICHITA, KANSAS					
<b>BUGHMAN COMPANY P.A.</b> ENGINEERING, SURVEYING, & PLANNING 318-262-7271 • 315 ELLIS • WICHITA, KANSAS 67211					
PROJECT NUMBER					
1051 PPS 607861					
DESIGN	DRAWN	APPROVED	DATE	SCALE	SHEET
STAFF	STAFF		9/22/00	NONE	5 OF 6


# WILLOW PLACE

## AN ADDITION TO WICHITA, SEDGWICK COUNTY, KANSAS

State of Kansas) SS  
Sedgwick County) We, Baughman Company, P.A., Surveyors in  
aforesaid county and state do hereby certify that we have surveyed and  
platted "WILLOW PLACE", an Addition to Wichita, Sedgwick County, Kansas  
and that the accompanying plat is a true and correct exhibit of  
the property surveyed, described as a tract of land lying in the NW 1/4 of  
Sec. 29, Twp. 26-S, R-2-E of the 6th P.M., Sedgwick County, Kansas,  
more particularly described as follows: Commencing at the SE corner  
of said NW 1/4, thence S89°10'08"W, 20.00 feet along the south line  
of said NW 1/4 to a point of beginning, said point being a point on a  
curve to the left, thence along said curve 887.25 feet, said curve having  
a central angle of 89°38'02", a radius of 567.15 feet, and a long chord  
of 799.50 feet, bearing N45°38'17"W; thence S89°32'42"W, 602.94 feet;  
thence S78°21'42"W, 19.59 feet to the southerly right-of-way line of  
Missouri Pacific Railroad; thence N61°31'26"E, 497.70 feet along said  
southerly line to a point lying 35.00 feet south of the north line of said  
NW 1/4; thence N89°38'23"E, 824.88 feet, parallel with said north line,  
to a point on the east line of said NW 1/4; thence S70°49'16"E,  
792.07 feet along said east line; thence S89°10'44"W, 20.00 feet to  
the point of beginning.

Existing public easements and dedications being  
vacated by virtue of K.S.A. 12-5-2(b).

Baughman Company, P.A.

  
Michael G. Conrey, Surveyor  
Michael G. Conrey

Know all men by these presents that we,  
the undersigned, have caused the land in the surveyors certificate to be  
platted into Lots, Blocks, and Streets, to be known as "WILLOW PLACE",  
an Addition to Wichita, Sedgwick County, Kansas. The utility easement is  
hereby granted as indicated for the construction and maintenance of all  
public utilities. The drainage easements are hereby granted as indicated  
for drainage purposes. The drainage and utility easement is hereby  
granted as indicated for drainage purposes and for the construction  
and maintenance of all public utilities. The street, drainage, and utility  
easements are hereby granted as indicated for street related purposes,  
for drainage purposes, and for the construction and maintenance of all  
public utilities. The streets are hereby dedicated to and for the use  
of the public. All abutters rights of access to or from 45th Street  
North over and across the north line of Lots 1, 15, 16, and 17, Block A,  
and over and across the north line of Lots 1, 2, 3, and 4, Block B,  
are hereby granted to the City of Wichita, Kansas.

Forty-Fifth Street Properties, L.L.C.

Jerry D. Michalis, Member  
Jeffrey D. Michalis

Michael Brand, Member  
Brand Investments, LLC, Member,  
by Michael Brand, Member

State of Kansas) SS  
Sedgwick County) The foregoing instrument acknowledged before  
me, this 11th day of AUGUST, 2000, by Jerry D. Michalis, Member of  
Forty-Fifth Street Properties, L.L.C., on behalf of the limited liability  
company.

Judith M. Terhune, Notary Public  
JUDITH M. TERHUNE

My App't. Exp. 11-7-2001

State of Kansas) SS  
Sedgwick County) The foregoing instrument acknowledged before  
me, this 11th day of AUGUST, 2000, by Michael Brand, Member of  
Brand Investments, LLC, as Member of Forty-Fifth Street Properties, L.L.C.,  
on behalf of the limited liability company.

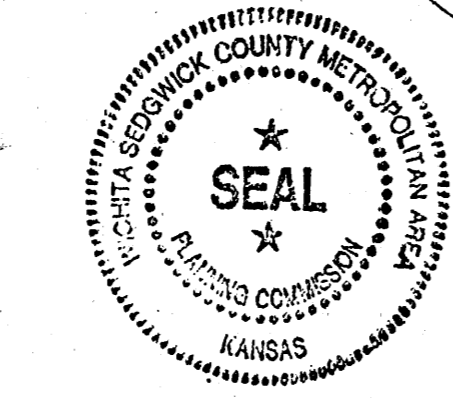
Judith M. Terhune, Notary Public  
JUDITH M. TERHUNE

My App't. Exp. 11-7-2001

This plat of "WILLOW PLACE", an Addition to  
Wichita, Sedgwick County, Kansas has been submitted to and approved by  
the Wichita-Sedgwick County Metropolitan Area Planning Commission,  
Wichita, Kansas.  
Dated this 16th day of March, 2000  
Wichita-Sedgwick County Metropolitan Area Planning Commission

Francis S. Carolato, Chairman  
Francis S. Carolato

Marvin S. Krout, Secretary  
Marvin S. Krout



Reviewed in accordance with K.S.A. 58-2005  
on this 21st day of August, 2000.

Tricia L. Roballo  
Tricia L. Roballo, L.S. #1246  
Deputy County Surveyor  
Sedgwick County, Kansas

Entered on transfer record this 31st  
day of August, 2000.

James Alford, County Clerk  
James Alford

State of Kansas) SS  
Sedgwick County) This is to certify that this plat has been  
filed for record in the office of the Register of Deeds, this 31st day  
of August, 2000 at 4:50 o'clock P.M. and is duly recorded.

Bill Meek, Register of Deeds  
Bill Meek

Linda Kizire, Deputy  
Linda Kizire

Bob Knight, Mayor  
Bob Knight

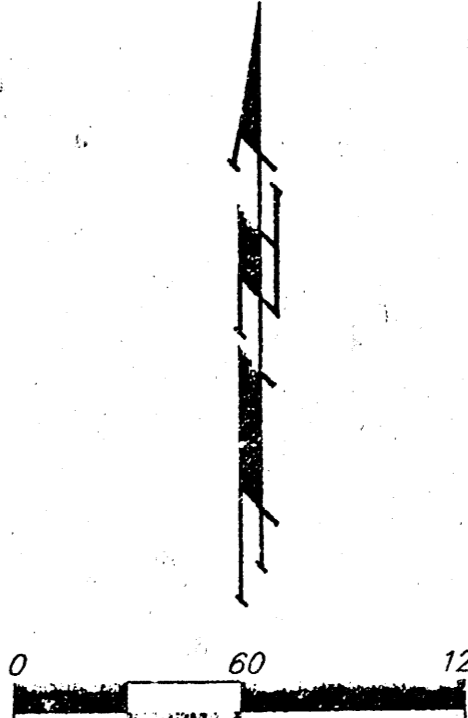
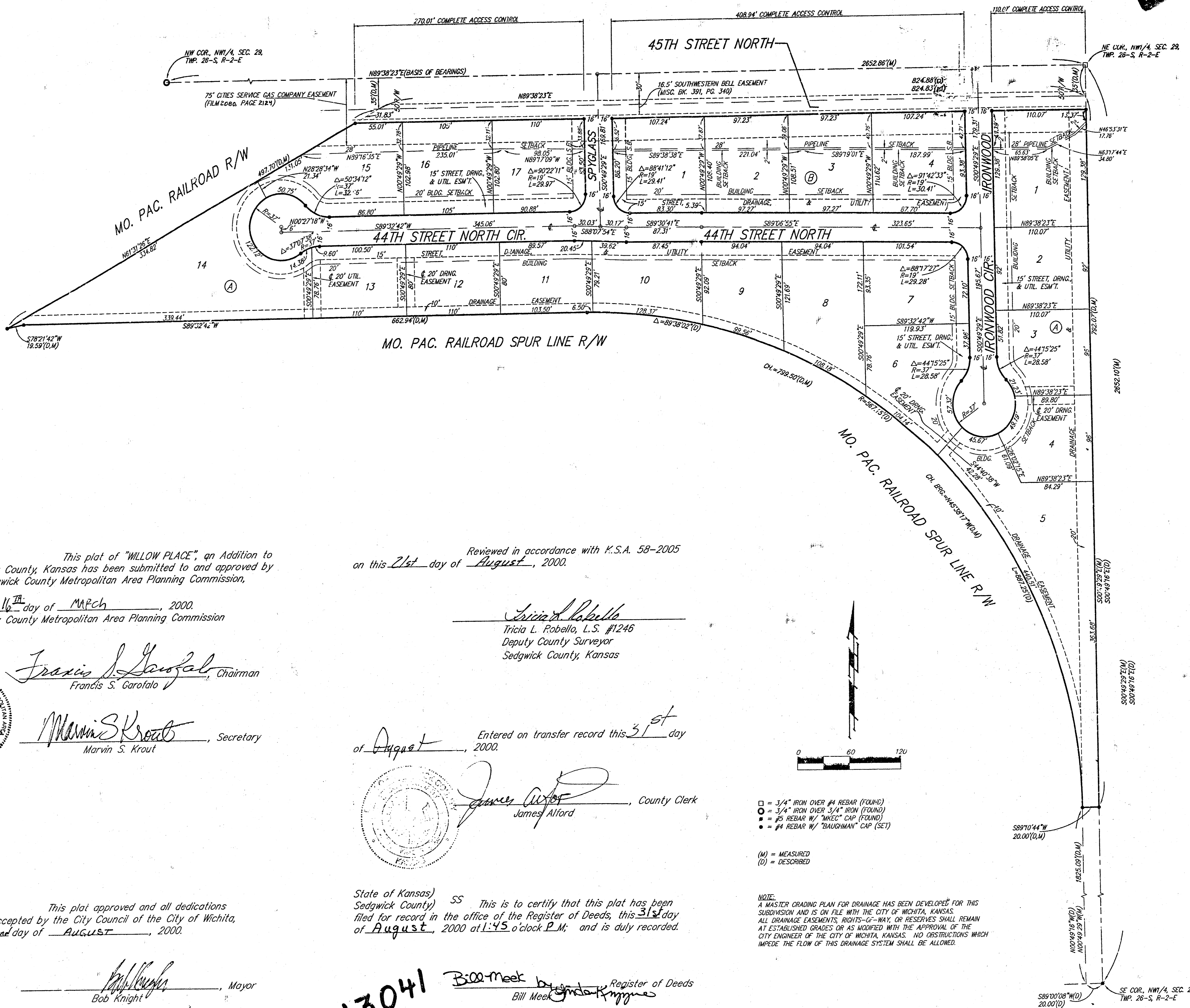
Pat Burnett, City Clerk  
Pat Burnett



1913041

- = 3/4" IRON OVER #4 REBAR (FOUND)
  - = 3/4" IRON OVER 3/4" IRON (FOUND)
  - = #3 REBAR W/ "WRECK" CAP (FOUND)
  - = #4 REBAR W/ "BAUGHMAN" CAP (SET)
- (M) = MEASURED  
(D) = DESCRIBED

NOTE:  
A MASTER GRADING PLAN FOR DRAINAGE HAS BEEN DEVELOPED FOR THIS  
SUBDIVISION AND IS ON FILE WITH THE CITY OF WICHITA, KANSAS.  
ALL DRAINAGE EASEMENTS, RIGHTS-OF-WAY, OR RESERVES SHALL REMAIN  
AT ESTABLISHED GRADES OR AS LOCATED WITH THE APPROVAL OF THE  
CITY ENGINEER OF THE CITY OF WICHITA, KANSAS. NO OBSTRUCTIONS WHICH  
IMPEDS THE FLOW OF THIS DRAINAGE SYSTEM SHALL BE ALLOWED.



BAUGHMAN COMPANY P.A.  
ENGINEERING, SURVEYING, & PLANNING  
316-262-7271 • 315 ELLIS • WICHITA, KANSAS 67211  
P.L.P. 21 WILLOW PLACE 730 LONGTOWER DRIVE MOORE

22 NLA 2011 Willow - Hub 2A (2011) 2991201

20.00  
ck