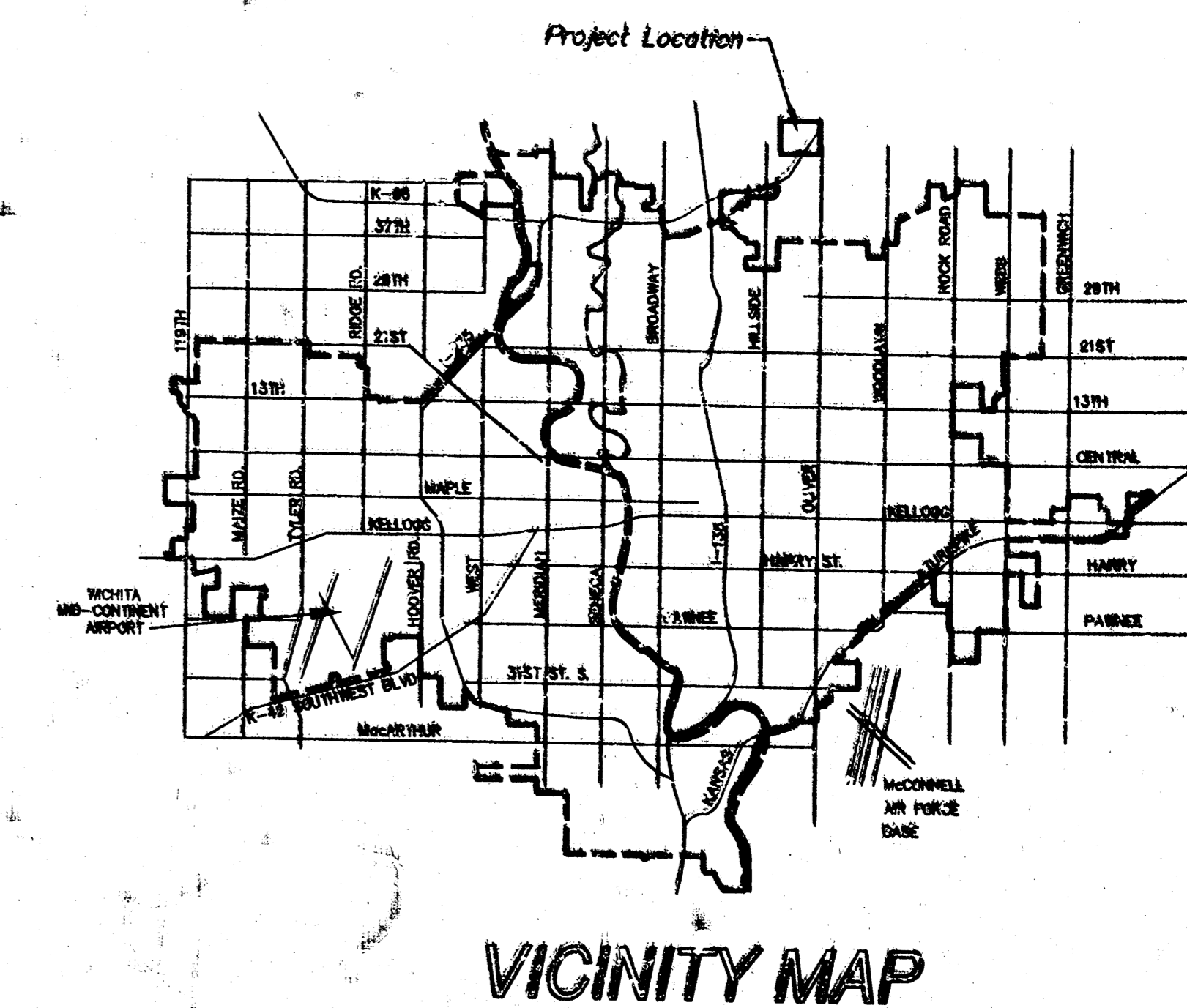


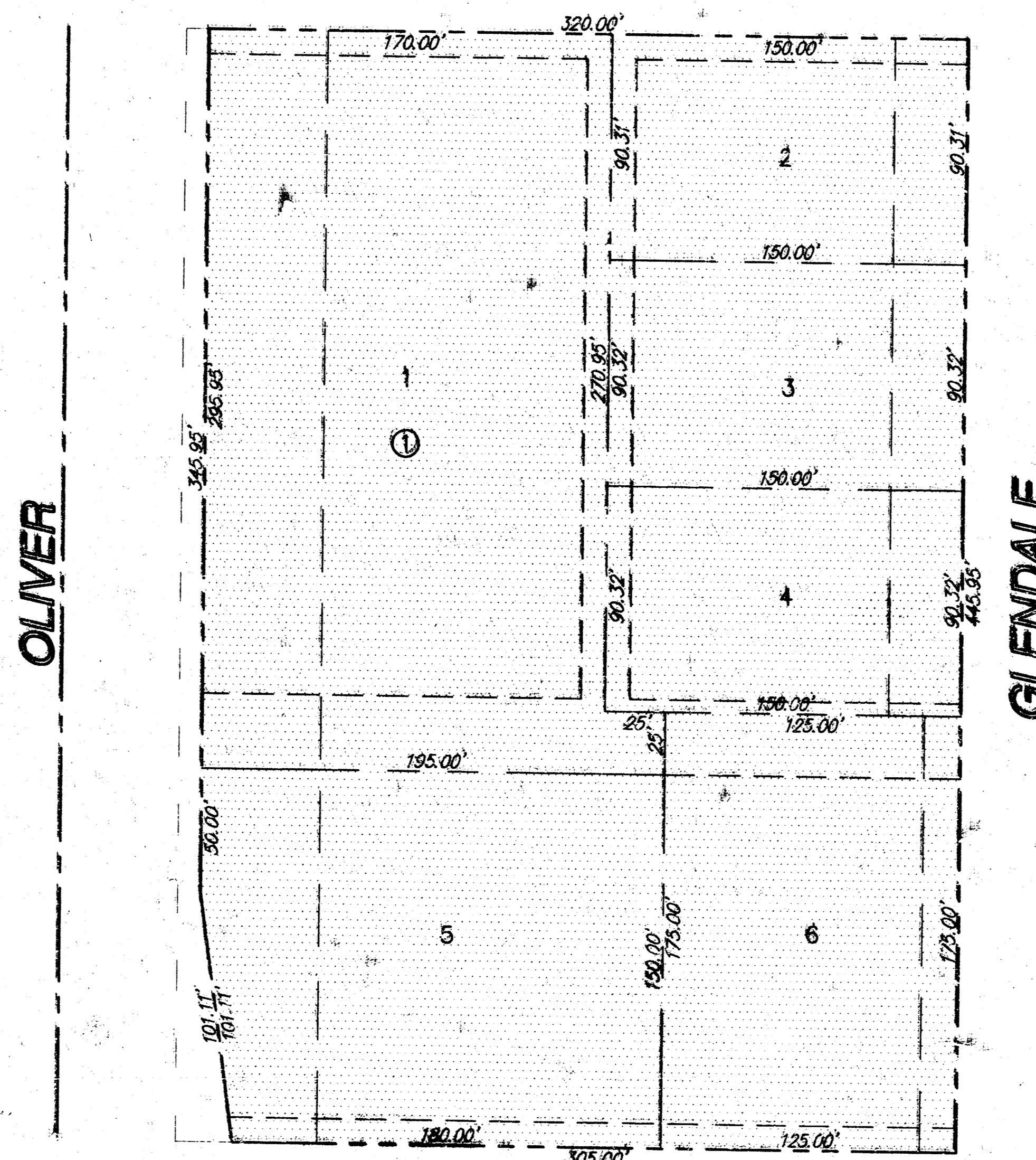
SANITARY SEWER TO SERVE BLOCK 1 WINKLEY ADDITION BEL AIRE, SEDGWICK COUNTY, KANSAS

PROJECT NO: 662 PPS (607861)



GENERAL NOTES

1. This project is to be constructed in accordance with City of Bel Aire standard specifications for sanitary sewer construction.
2. No work shall be done on this project until such time as an inspector designated by the City of Bel Aire has been assigned to the project. The owner/contractor shall make arrangements for inspection with Mid-Kansas Engineering Consultants, 684-3600.
3. All areas disturbed by Contractor's operations shall be restored to a condition like or better than existing.
4. The Contractor shall protect property corner markers. Any corners disturbed by Contractor's operations shall be reset by a Licensed Surveyor at Contractor's expense.
5. The Contractor shall contact Kansas One-Call (687-2470 or 1-800-DIG-SAFE) a minimum of 48 hours prior to any excavation.



SRB

SCALE:
1"=50'

BENCH MARKS:

1. C.O.W. standard disk on S.W. corner R.C.B.C. at 45th Street North and Oliver
Elevation = 1398.88 M.S.L.

APPROVED AS NOTED
BY CITY ENGINEER OF WICHITA

Sanitary Sewers VRH 9/30/96

Storm Sewers _____

Driveway Approaches _____

Water Mains _____

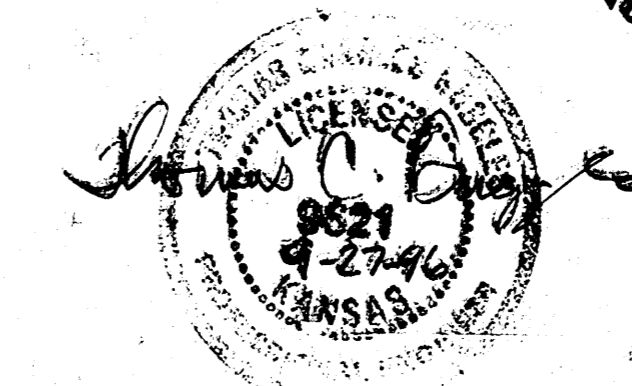
Paving _____

NOTE TO CONTRACTORS

Inspection and testing for this project are to be provided by a Licensed Consulting Engineering Firm under contract with the Owner/Developer. Said inspection to be in accordance with the City of Wichita standard construction engineering practices and certified by a Licensed Professional Engineer. No work shall be performed in dedicated easements or public right-of-way by the Contractor without such inspection, nor shall any work be commenced without written authorization by the City Engineer.

SHEET INDEX

1. TITLE SHEET/GENERAL NOTES
2. PLAN/PROFILE
3. STANDARD MANHOLE DETAILS
4. PLAT COPY



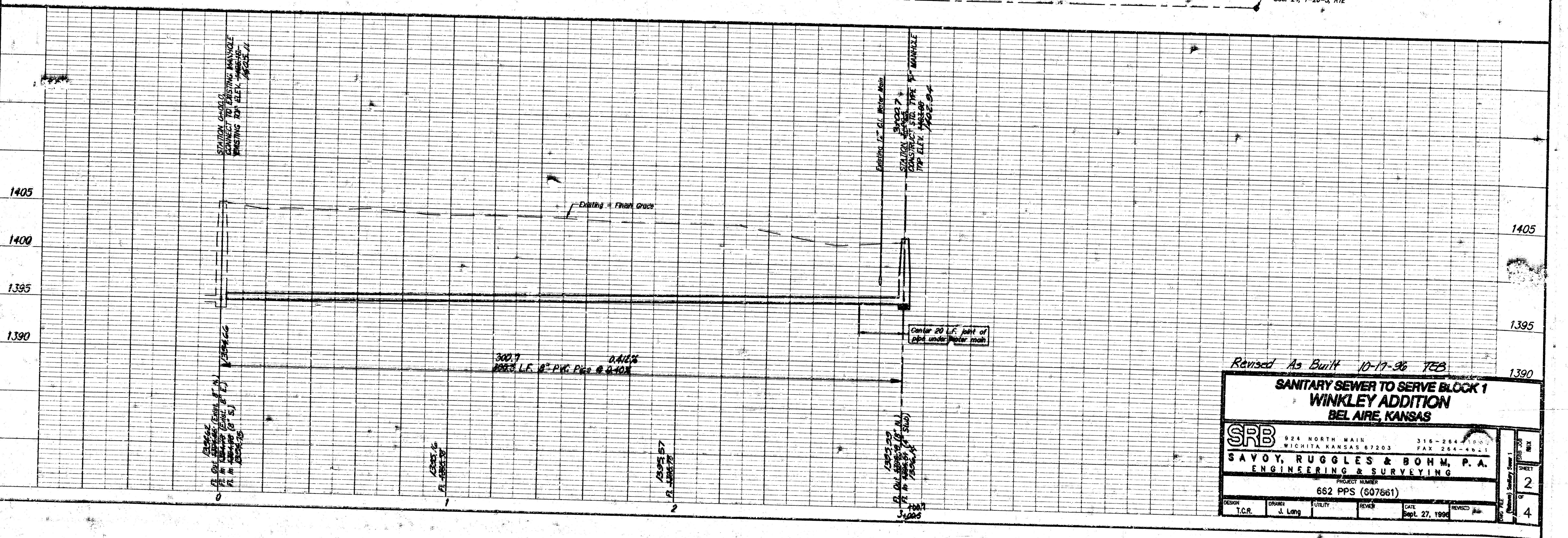
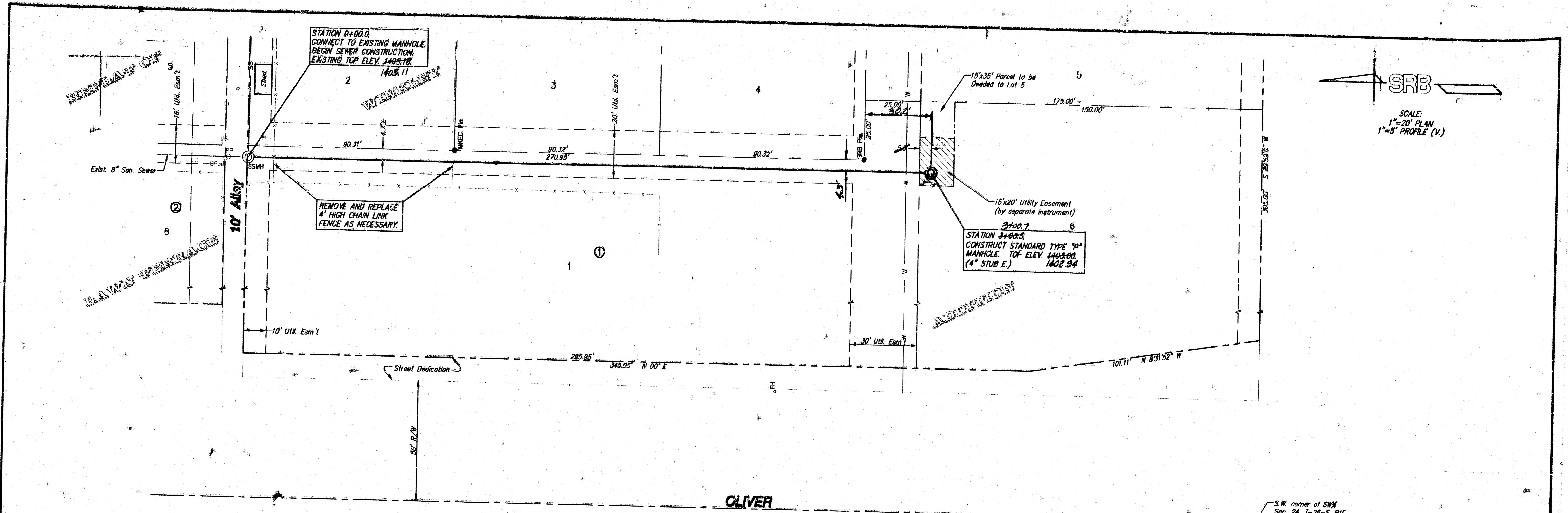
Booked 10/16/96
CYS
From AS Boites

REVISED AS BUILT 10-17-96 JCR

SRB 322 NORTH MAIN 316-264-8000
WICHITA, KANSAS 67203 FAX 316-264-8621

SAVOY, RUGGLES & BOHM, P.A.
ENGINEERING & SURVEYING

35 ACTIVE PROJECTS/JASON LANG/SRBX WINKLEY ADDITION SANITARY SANITARY COVER



G. LACTIVE PROJECT (US) LANSON LANE 531X WINKLEY ADDITION (SANITARY) (SANITARY SEWER) 1

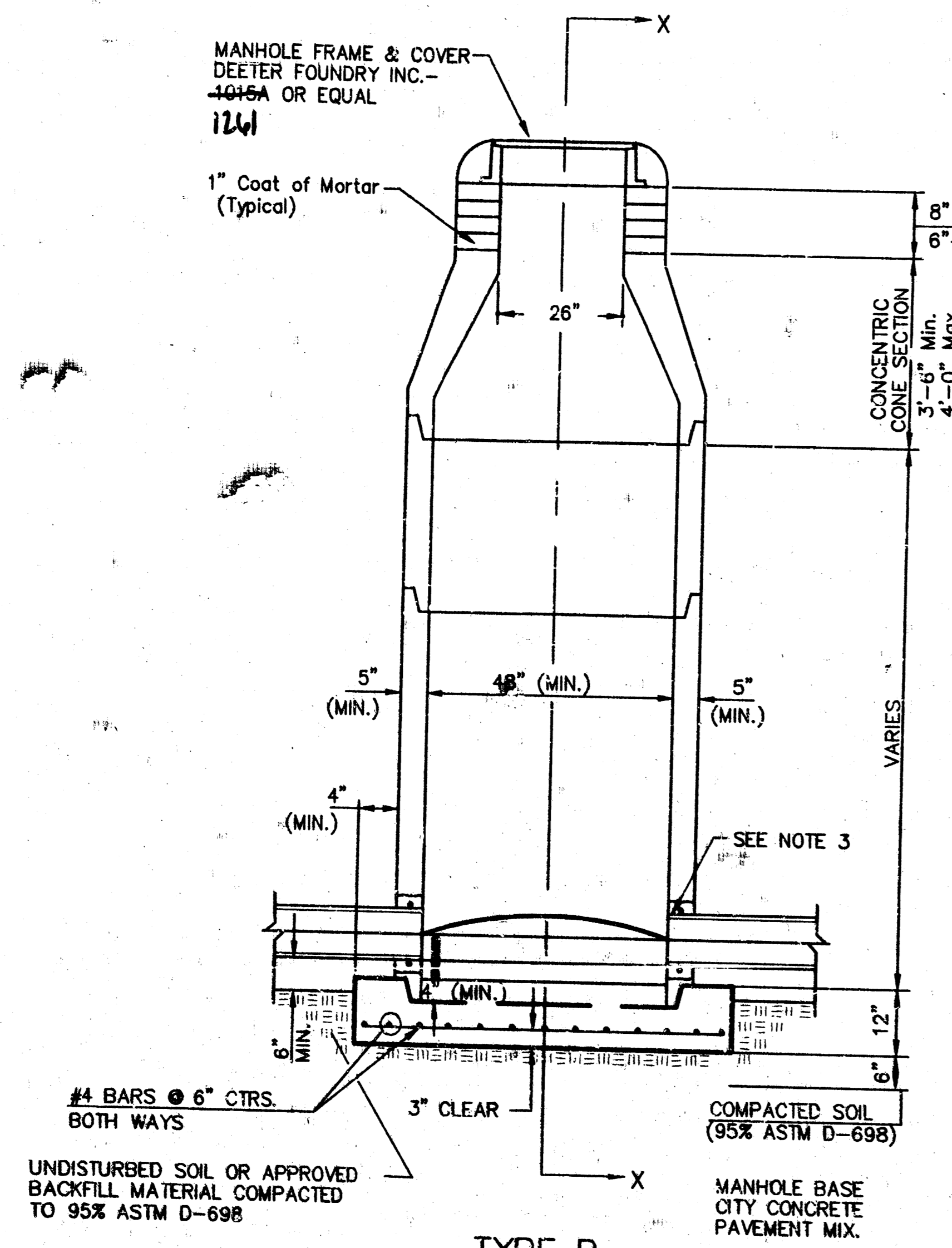
Revised As Built 10-17-96 TCB

**SANITARY SEWER TO SERVE BLOCK 1
WINKLEY ADDITION
BEL AIRE, KANSAS**

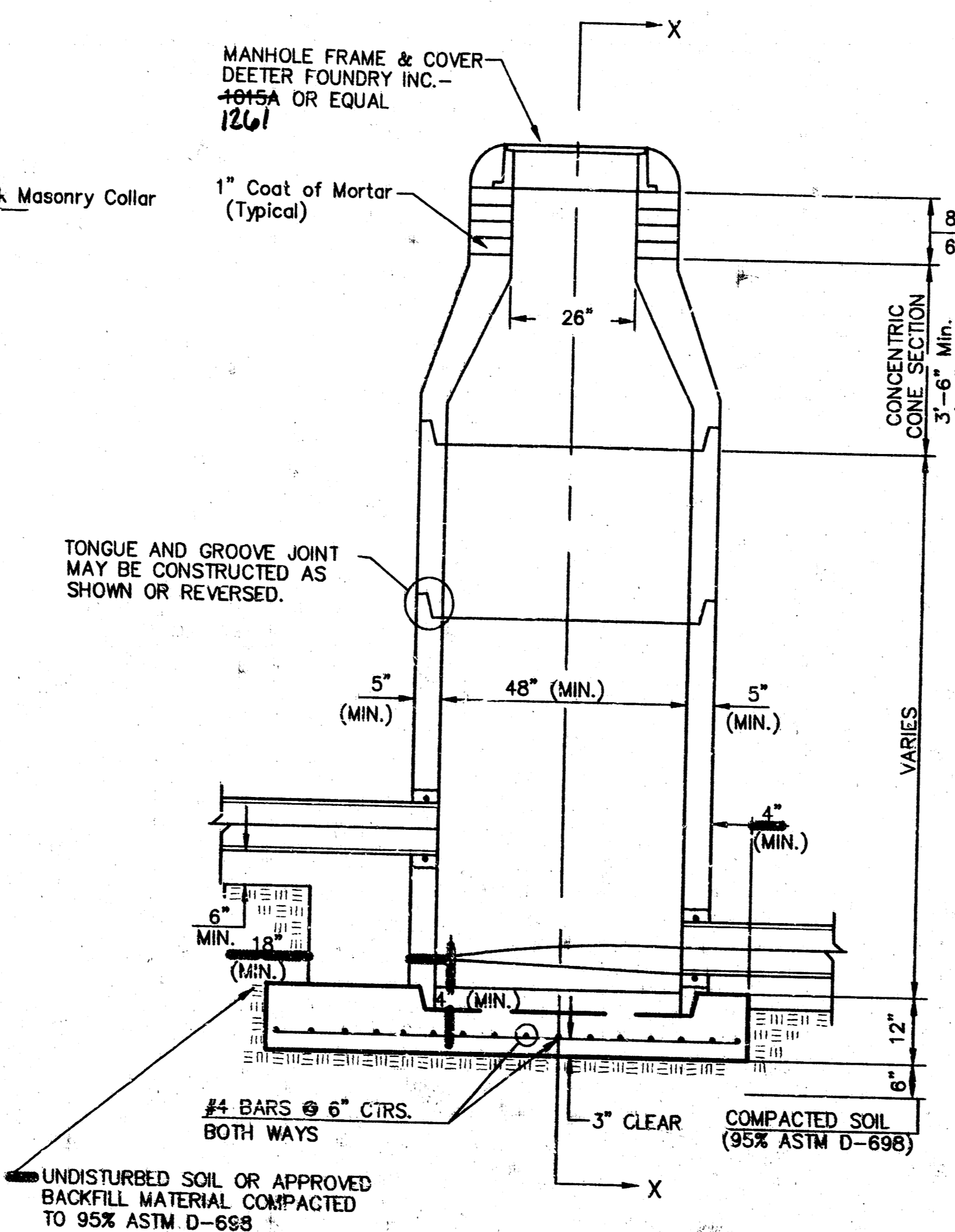
SRB		924 NORTH MAIN WICHITA KANSAS 67203		316-264-4000 FAX 264-4001	
SAVOY, RUGGLES & BOHM, P. A. ENGINEERING & SURVEYING					
PROJECT NUMBER 652 PPS (007861)					
DESIGN T.C.R.	DRAWN J. Long	UTILITY	REVIEW	DATE Sep. 27, 1996	REVISION

SHEET 2	OF 4
-------------------	----------------

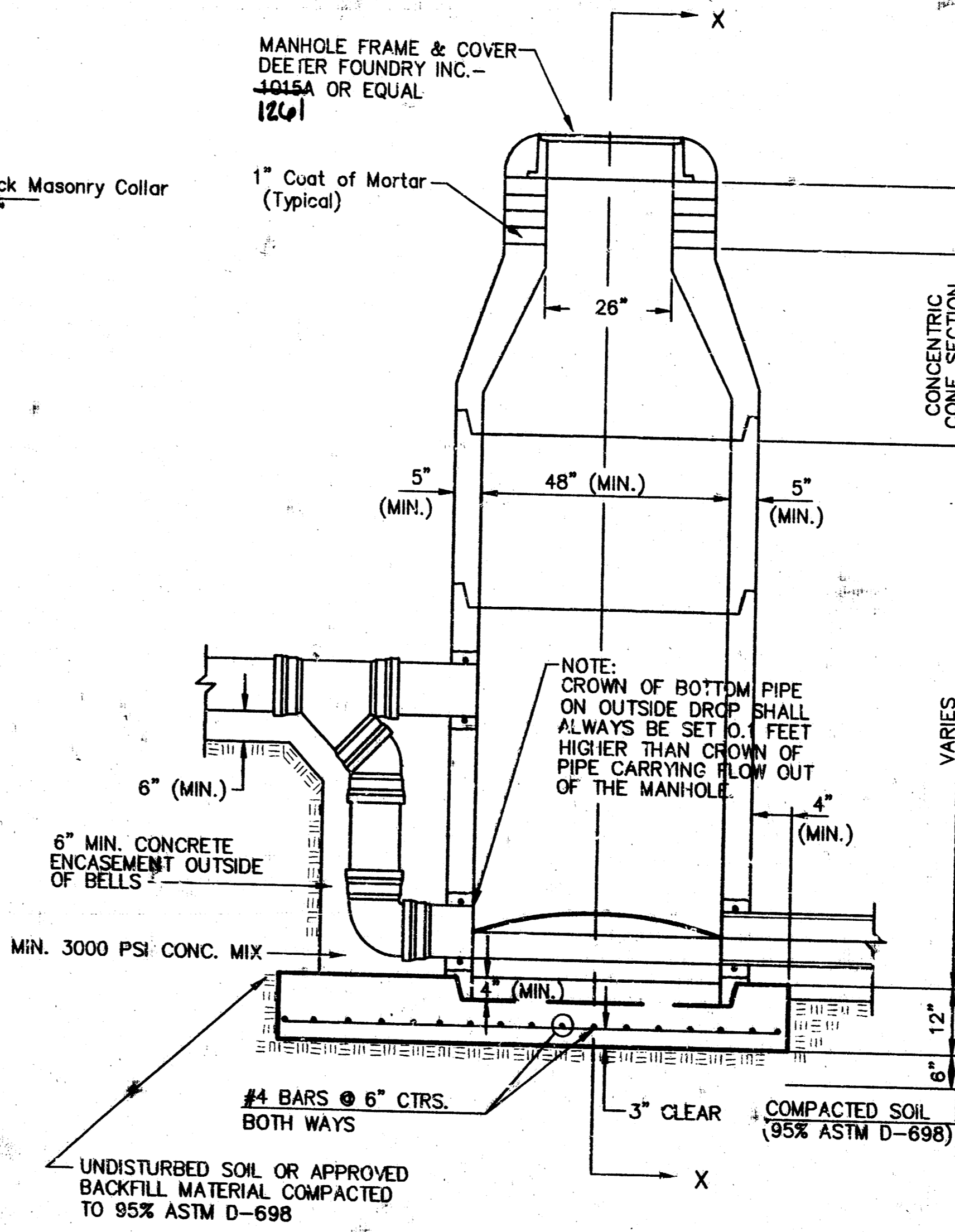
SEWER APPURTENANCES DETAILS



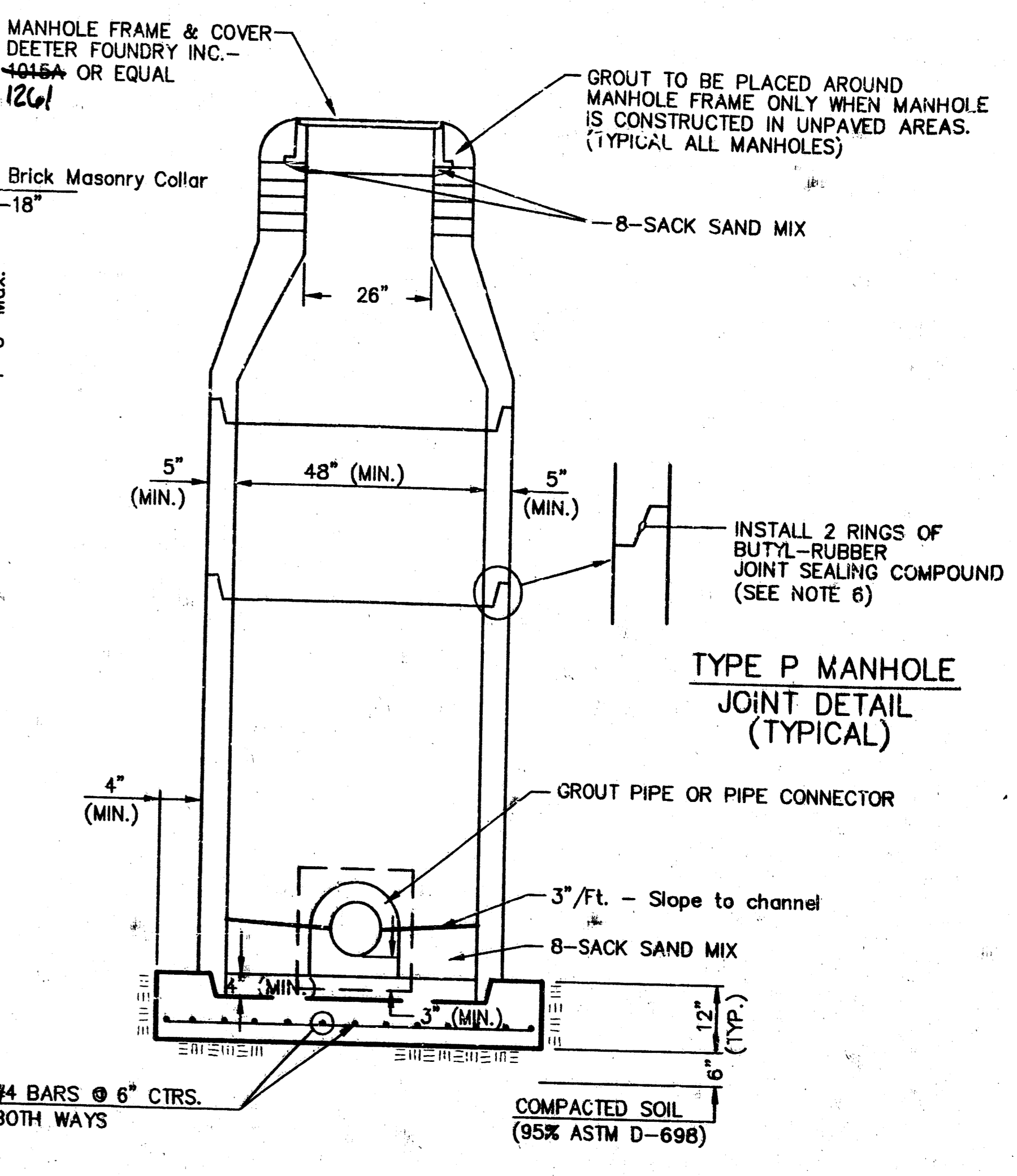
TYPE P STANDARD MANHOLE



TYPE P INSIDE DROP MANHOLE



TYPE P OUTSIDE DROP MANHOLE



SECTION X (TYPICAL)

GENERAL NOTES
PRECAST MANHOLE NOTES

- ALL PRECAST CONCRETE MANHOLE SECTIONS SHALL CONFORM TO THE LATEST REVISIONS OF A.S.T.M. C478 AS MODIFIED BY THE SPECIFICATIONS.
- NON-SHRINK GROUT SHALL BE NON-METALLIC TYPE.
- APPROVED FLEXIBLE WATERSTOP GASKETS SHALL BE INSTALLED TO JOIN THE SEWER TO THE MANHOLE WALL WHEN A.B.S. COMPOSITE PIPE OR P.V.C. PIPE IS USED. FOR OTHER TYPES OF PIPE THE SEWER SHALL BE GROUTED IN PLACE WITH NON-SHRINK GROUT. THE SEWER PIPE SHALL BE SUPPORTED WITH CONCRETE ENCASEMENT A MINIMUM OF 3 FEET FROM THE MANHOLE WALL AND TO THE FIRST JOINT FOR V.C.P. SUCH THAT THE JOINT REMAINS FLEXIBLE.
- ALL INSIDE SURFACES OF THE CONCRETE MANHOLE WHICH WOULD BE EXPOSED TO SEWER GAS SHALL BE COATED WITH 2 COATS THEMEX SERIES 66 HI-BUILD EPOXYLINE, DRY THICKNESS OF 8 MILS (MIN.)
- EXTERIOR MANHOLE WALLS SHALL BE COATED WITH 1 COAT MOBILARMA 633 BITUMINOUS COATING.
- JOINT SEALING COMPOUND SHALL BE KENT SEAL NO. 2 OR APPROVED EQUAL.
- PRECAST MANHOLES SHALL BE SET AT LEAST 4 INCHES INTO THE MANHOLE BASE.
- TOP OF MANHOLE FLOOR SLAB SHALL BE AT LEAST 3 INCHES BELOW THE FLOW LINE OF THE OUTLET PIPE TO INSURE SUFFICIENT MINIMUM THICKNESS OF SHAPED INVERT.
- LIFTING HOLES SHALL BE FILLED WITH NON-SHRINK GROUT AND THE INTERIOR SURFACE COATED AS SPECIFIED.
- MORTAR USED IN MASONRY CONSTRUCTION SHALL CONTAIN 8 BAGS OF CEMENT PER CUBIC YARD. CONCRETE USED IN MANHOLE BASES SHALL CONFORM TO THE REQUIREMENTS OF CONCRETE FOR CONCRETE PAVEMENT CONSTRUCTION AS SPECIFIED IN THE CITY STANDARD PAVING SPECIFICATIONS USING CITY CONCRETE PAVEMENT MIX WITHOUT AIR ENTRAINING ADMIXTURE. MORTAR SHALL BE PLACED AROUND THE MANHOLE RING AS SHOWN ON THE DRAWINGS WHEN MANHOLES ARE CONSTRUCTED IN UNPAVED AREAS. MANHOLES CONSTRUCTED WHERE PIPE SIZES ARE SMALLER THAN 24" SHALL HAVE AN INSIDE DIAMETER OF 4". MANHOLES CONSTRUCTED WHERE PIPE SIZES ARE 24" OR LARGER SHALL HAVE AN INSIDE DIAMETER OF 5". COMPLETED MANHOLE SHALL BE WITHOUT LEAKS AND WATER TIGHT.

- REINFORCING STEEL SHALL BE INSTALLED IN THE MANHOLE BASES AND SHALL CONSIST OF NO. 4 BARS PLACED ON 6" CENTERS IN BOTH DIRECTIONS. THE MANHOLE BASE REINFORCEMENT SHALL BE PLACED AT LEAST 3" ABOVE THE BOTTOM OF THE MANHOLE BASE. ALL COSTS FOR FURNISHING AND INSTALLING REINFORCING STEEL SHALL BE INCLUDED IN THE UNIT PRICE BID FOR THE MANHOLE.
- OPENINGS SHALL BE CUT INTO THE MANHOLE WALL WHEN OUTSIDE DROPS ARE CONSTRUCTED ON EXISTING MANHOLES. SUCH OPENINGS CUT INTO EXISTING MANHOLES SHALL BE AS SMALL AS PRACTICAL TO FACILITATE INSTALLING AND GROUTING THE NEW PIPE IN PLACE. WATERSTOP GASKETS SHALL BE USED WITH P.V.C. AND A.B.S. COMPOSITE PIPE. THE NEW PIPE SHALL BE GROUTED INTO THE OPENING USING AN APPROVED NONSHRINK GROUT FOR THE FULL MANHOLE WALL THICKNESS. THE EXTERIOR OF THE COMPLETED CONNECTION SHALL BE SEALED WITH AN APPROVED BITUMINOUS COATING SUCH THAT THE CONNECTION WILL BE WATER TIGHT. FLOOR OF MANHOLE SHALL BE MODIFIED TO FORM NEW FLOW CHANNEL FOR THE NEW CONNECTION AS INDICATED BY THE DRAWING. THIS WORK, INCLUDING MODIFICATION OF MANHOLE FLOOR, SHALL BE PAID FOR AT THE UNIT PRICE BID FOR OUTSIDE DROP STA. X CONSTRUCTED ON EXISTING MANHOLE.
- THE FLOORS OF ALL MANHOLES SHALL BE SHAPED WITH FLOW CHANNELS SUCH THAT THE MANHOLES WILL BE SELF CLEANING AND FREE OF AREAS WHERE SOLIDS COULD BE DEPOSITED AS SEWAGE FLOWS THROUGH THE MANHOLE FROM ALL INLET PIPES TO THE OUTLET PIPE. FLOW CHANNELS SHALL BE FORMED TO MATCH THE BOTTOM HALVES OF THE INFLOWING PIPES AND THE OUTFLOWING PIPE AS SHOWN BY THE DRAWINGS EXCEPT FOR INSIDE DROP MANHOLES. FLOW CHANNELS FOR INSIDE DROP MANHOLES SHALL BE CONSTRUCTED AS INDICATED BY THE DRAWING. MANHOLES SHALL BE CONSTRUCTED IN A MANNER WHICH WILL MAINTAIN THE FLEXIBILITY OF THE JOINT. COST OF CRADLE WITHIN MANHOLE FLOORS SHALL HAVE SLOPES OF 3 INCHES PER FOOT IN THE AREAS OUTSIDE OF THE FLOW CHANNELS SLOPED TOWARD THE FLOW CHANNELS. PIPES LAID THROUGH MANHOLES SHALL HAVE THE TOP HALF REMOVED TO NEAR LINES FOR THE FULL INSIDE DIAMETER OF THE MANHOLE. MANHOLE FLOORS SHALL THEN BE SHAPED AROUND THE BOTTOM HALF OF THE PIPE WHICH FORMS THE FLOW CHANNEL.
- PIPES INSTALLED WITHIN THE EXCAVATION MADE FOR THE MANHOLE SHALL BE CRADLED WITH CONCRETE TO THE LIMITS OF THE MANHOLE EXCAVATION. WHEN CLAY PIPE IS USED, THE CRADLE SHALL EXTEND TO THE FIRST JOINT OUTSIDE THE MANHOLE. A CRADLE SHALL BE TERMINATED AT THE CLAY PIPE JOINT IN A MANNER WHICH WILL MAINTAIN THE FLEXIBILITY OF THE JOINT. COST OF CRADLE WITHIN MANHOLE EXCAVATION OR TO CLAY PIPE JOINTS ADJACENT TO MANHOLE SHALL BE INCLUDED IN THE UNIT PRICE BID FOR THE MANHOLE.

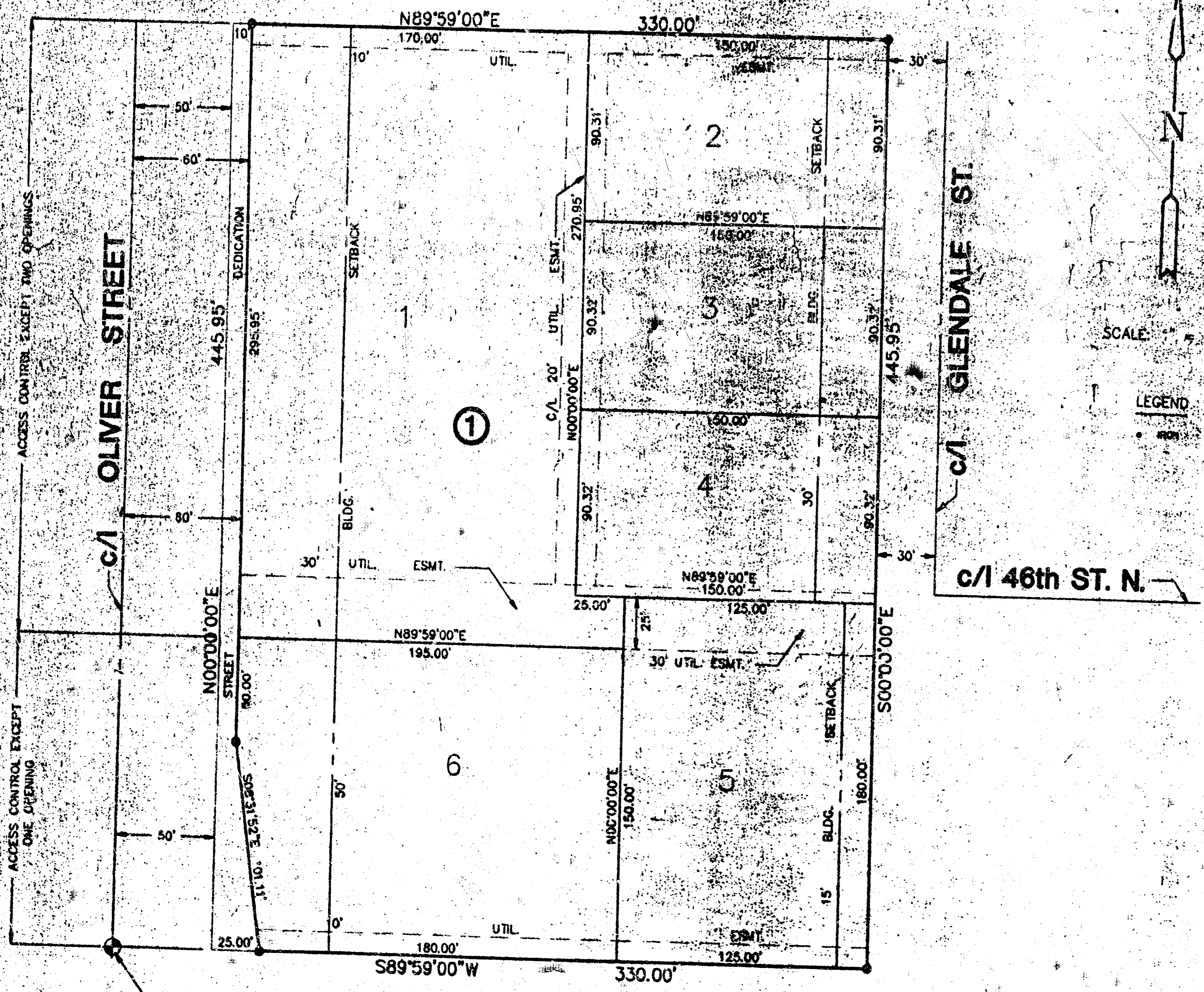
- MANHOLE COVER CASTINGS AND MANHOLE FRAME CASTINGS SHALL CONFORM TO THE REQUIREMENTS AS INDICATED IN THE STANDARD SPECIFICATIONS AND AS SHOWN IN THE STANDARD DETAIL DRAWING.
- THE VERTICAL DROP IN INSIDE DROP MANHOLES SHALL NOT EXCEED 2' FOR INFLOWING PIPES SIZED 12" OR SMALLER AND 2' FOR INFLOWING PIPES LARGER THAN 12". THE CROWNS OF INFLOWING PIPES SHALL NEVER BE SET LOWER THAN THE CROWN OF THE OUTFLOWING PIPE.
- STANDARD MANHOLES AND STANDARD INSIDE DROP MANHOLES SHALL BE BID AS STANDARD MANHOLES FOR THE TYPE AND DIAMETER INDICATED. OUTSIDE DROP MANHOLES SHALL BE BID AS STANDARD OUTSIDE DROP MANHOLES FOR THE TYPE AND DIAMETER INDICATED. ALL MANHOLE DIAMETERS WILL BE 4' UNLESS INDICATED OTHERWISE.
- A BRICK MASONRY COLLAR SHALL BE INSTALLED BETWEEN THE CAST IRON FRAME AND THE CONCENTRIC CONE. THE COLLAR WILL HAVE 8" WALLS AND A VERTICAL HEIGHT OF 6" MINIMUM AND 18" MAXIMUM. A 1" COAT OF MORTAR WILL BE PLASTERED ON THE OUTSIDE OF THE COLLAR. THE USE OF PRE-CAST CONCRETE SPACERS FOR MANHOLE TOP ADJUSTMENT IS ALSO ALLOWED.

6. ACTIVE PROJECTS/USON LANGSIX (MINKLEY ADDITION SANITARY) V-TYPE P MANHOLE

CITY OF WICHITA STANDARD SEWER APPURTENANCES DETAILS WICHITA, KANSAS			
SRB		924 NORTH MAIN WICHITA, KANSAS 67203	
SAVOY, RUGGLES & BOHM, P.A. ENGINEERING & SURVEYING		316-264-8008 FAX 264-4621	
PROJECT NUMBER 662 PPS (607861)			
DESIGN	DRAWN	UTILITY	REVIEW
C.O.W.	C.O.W.		
		DATE	REVISION
		Sept. 27, 1996	
			SHEET 3 OF 4

FINAL PLAT OF WINKLEY ADDITION

AN ADDITION TO BEL AIRE, SEDGWICK COUNTY, KANSAS



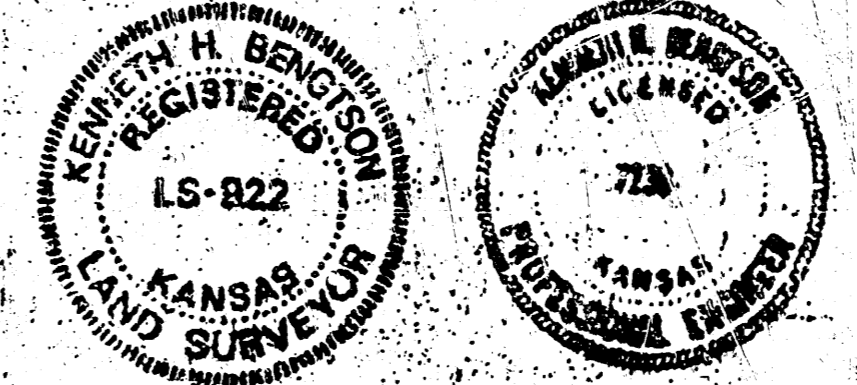
I, Kenneth H. Bengtson, a Civil Engineer and Registered Land Surveyor in Kansas, do hereby certify that I have been in responsible charge of surveying and platting of "WINKLEY ADDITION", an addition to Bel Aire, Sedgwick County, Kansas, into lots, a block, and streets the same being accurately set forth in the accompanying plat and described herein:

A replat of Lot 11, Block 2, Lot 8, Block 5, REPLAT OF LAWN TERRACE, an addition to Sedgwick County, Kansas, and also the south 10.00 feet of the alley lying adjacent to the North line of said Lot 11, and the west 10.00 feet of the vacated alley lying adjacent to the East line of said Lot 8.

All lots, blocks, streets, alleys, easements, and building setbacks within the above described property are being vacated and replatted by virtue of K.S.A. 12-512b.

I hereby certify that the details of this plat are correct to the best of my knowledge and belief this 12 day of October 1992.

Kenneth H. Bengtson
Kenneth H. Bengtson, P.E., R.L.S. #922
Mid-Kansas Engineering Consultants, Inc.
2500 N. Rock Road, Building #600
Wichita, KS



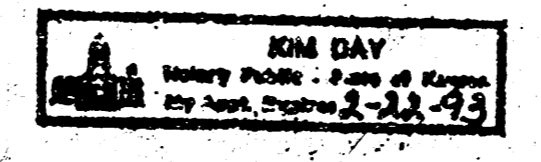
Know all men by these presents that we the undersigned property owners of the land as above set forth in the Civil Engineer's and Registered Land Surveyor's Certificate, have caused the same to be surveyed and platted into lots, a block, and streets the same to be known as "WINKLEY ADDITION", an addition to BEL AIRE, Sedgwick County, Kansas. The streets are hereby dedicated to and for the use of the public. Easements for the construction and maintenance of public utilities and drainage as indicated on the accompanying plat, are hereby granted. All abutters rights of access to or from Oliver Street over and across the West line of Lots 1 and 6, Block 1 are hereby granted to the City of Bel Aire, provided however, Lot 1 shall have access to Oliver at two locations and Lot 6 shall have access to Oliver at one location as indicated on the face of the plat.

BY: Jerry E. Winkley
BY: Lisa N. Winkley

STATE OF KANSAS)
SEDGWICK COUNTY) ss.
BE IT REMEMBERED, that on this 13th day of October 1992, before me the undersigned, a Notary Public in and for the County and State aforesaid, came Jerry E. and Lisa N. Winkley, personally known to me to be the same person who executed the foregoing instrument of writing and duly acknowledged the execution of the same.

IN WITNESS WHEREOF, I have hereunto set my hand and affixed my official seal, the day and year last above written.

Kim Day
Notary Public Kim Day
My appointment expires: February 22, 1993



We, Emprise Bank, mortgagees on the above described property, do hereby, consent to the plat of WINKLEY ADDITION.

EMPRISE BANK
Greg L. Lash, Sr. V.P.
Greg L. Lash, Sr. V.P.

STATE OF KANSAS)
SEDGWICK COUNTY) ss.

BE IT REMEMBERED, that on this 13th day of October 1992, before me the undersigned, a Notary Public in and for the County and State aforesaid, came Greg L. Lash, Sr. V.P. of Emprise Bank, personally known to me to be the same person who executed the foregoing instrument of writing and duly acknowledged the execution of the same.

IN WITNESS WHEREOF, I have hereunto set my hand and affixed my official seal, the day and year last above written.

Kim Day
Notary Public Kim Day
My appointment expires: February 22, 1993



This plat of WINKLEY ADDITION has been submitted to and approved by the Bel Aire Planning Commission, BEL AIRE, Kansas.

Dated this 14th day of September 1992.
BEL AIRE PLANNING COMMISSION
Beverly K. Dunning CHAIRMAN
Betty J. Martine SECRETARY

This plat approved and all dedications shown hereon, if any, accepted by the City Commissioners of the City of Bel Aire, Kansas, this 22nd day of November 1992.

Harold Smith MAYOR
Sherryl L. Cutter CITY CLERK

Enter on transfer record this 22nd day of January 1993.

Susan E. Crickell-Spohn COUNTY CLERK
by Christy Shell Chief Deputy

STATE OF KANSAS)
SEDGWICK COUNTY) ss.

This is to certify that this instrument was filed for record in the Register of Deeds office this 22nd day of January 1993. AT 2:00 P.M.

Pat Kettler REGISTER OF DEEDS
Ed Reas DEPUTY

