

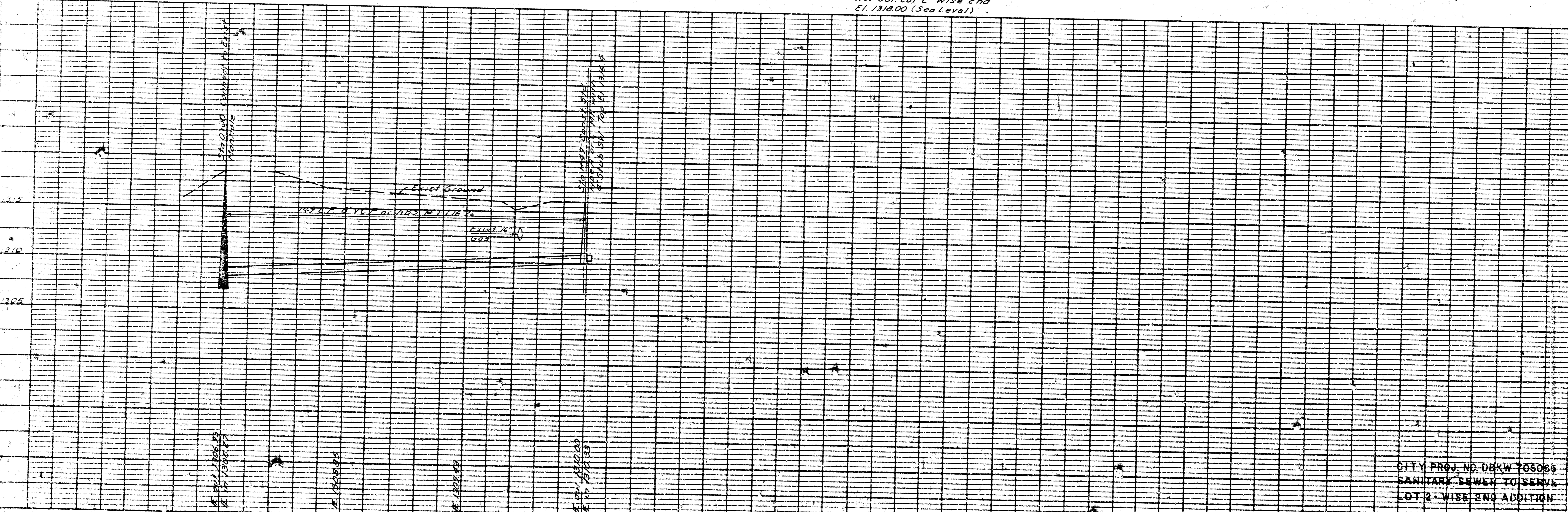
LOT 2  
WISE END ADD.  
1500 Blk. E. 29th St. N.

Note: Contractor shall verify location of 16" gas line prior to beginning the trenching operation.

B.M. Top curb SE cor. Driveway  
NW Cor. Lot 2 - Wise End  
Elev. 1318.00 (Sea Level)

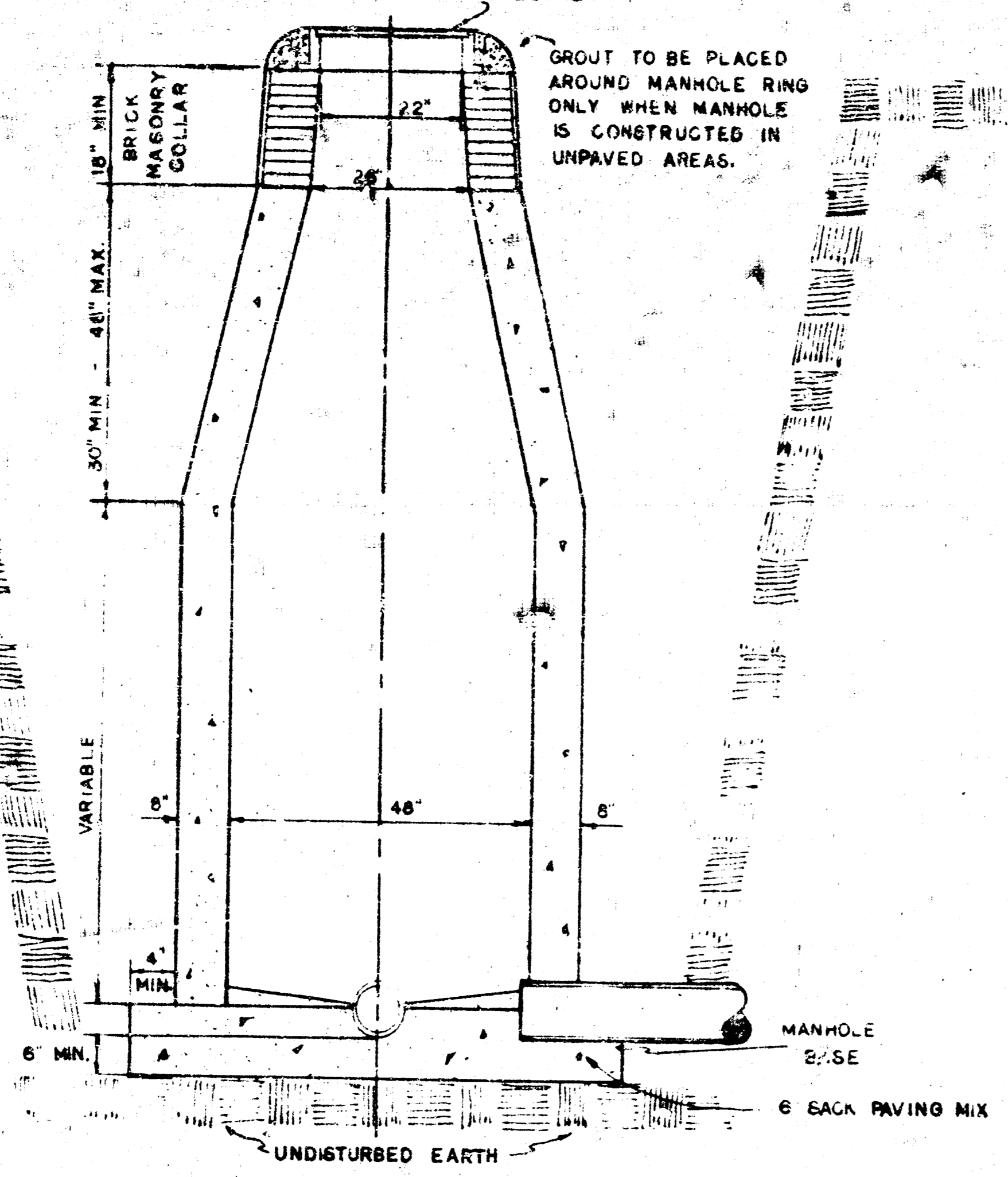
**NOTE TO CONTRACTOR**  
This project will be constructed under the supervision of the CITY ENGINEER and conforming to the CITY ENGINEER'S specifications and standards. The contractor shall be responsible for obtaining all necessary permits and for the safety of the work.

12-13-76  
APPROVED AS NOTED  
By CITY ENGINEER OF WICHITA,  
D.E.S.  
Storm Sewers \_\_\_\_\_  
Driveway Approaches \_\_\_\_\_

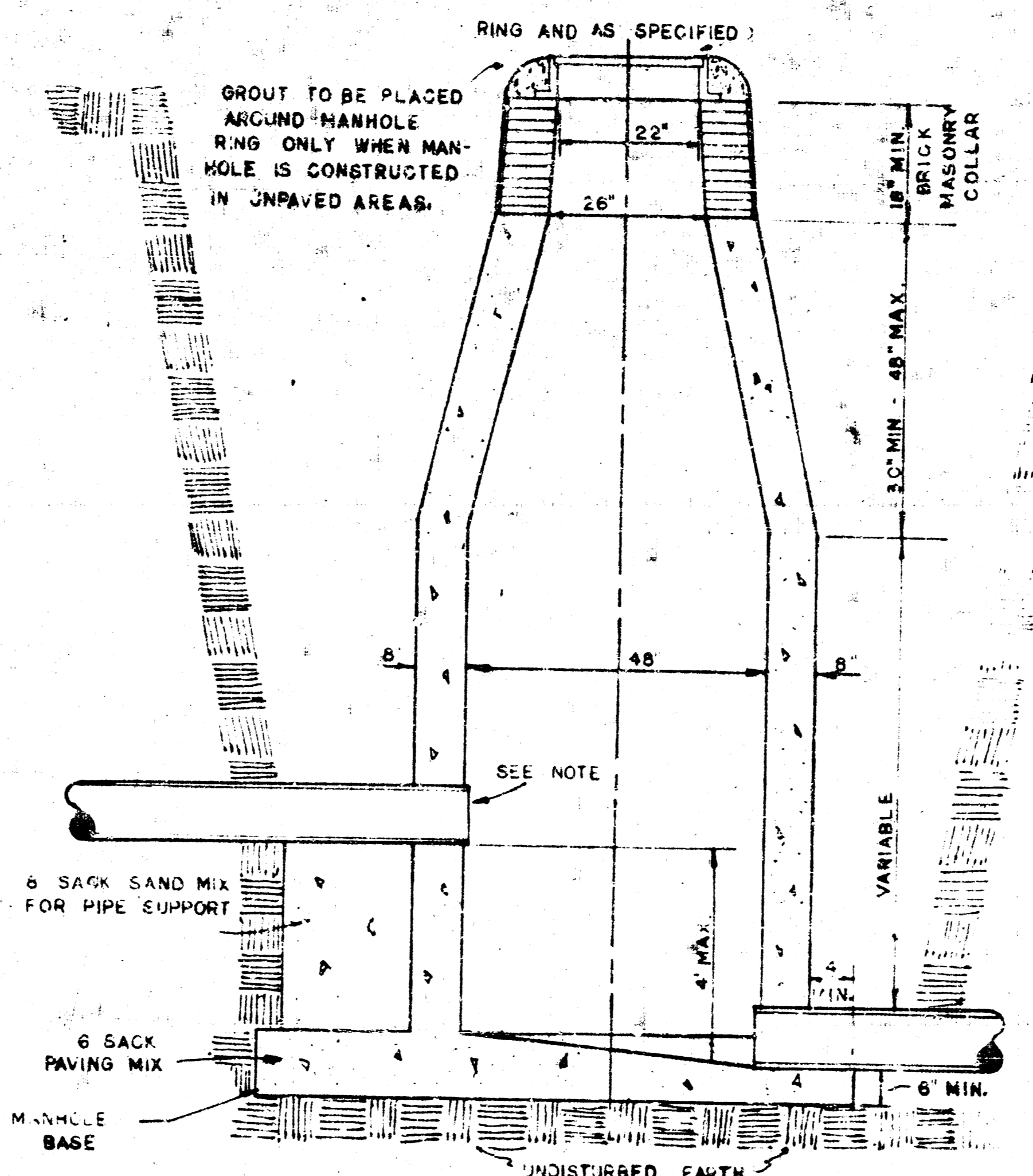


CITY PROJ. NO. DEKW 706066  
SANITARY SEWER TO SERVE  
LOT 2 - WISE END ADDITION

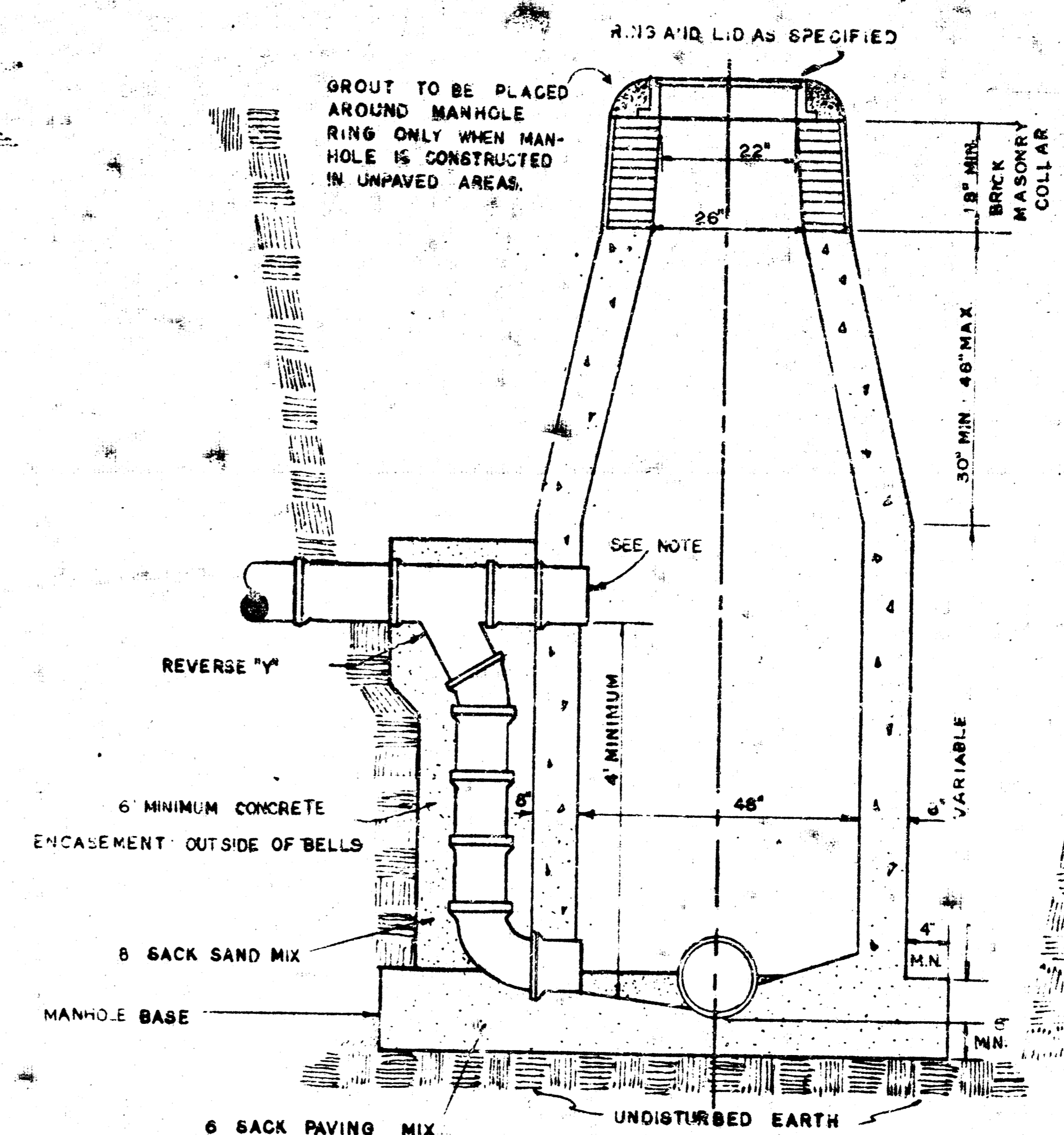
**STANDARD MANHOLE, TYPE "C"**



**DROP MANHOLE, TYPE "C"**



**OUTSIDE DROP MANHOLE, TYPE "C"**



**GENERAL NOTES**

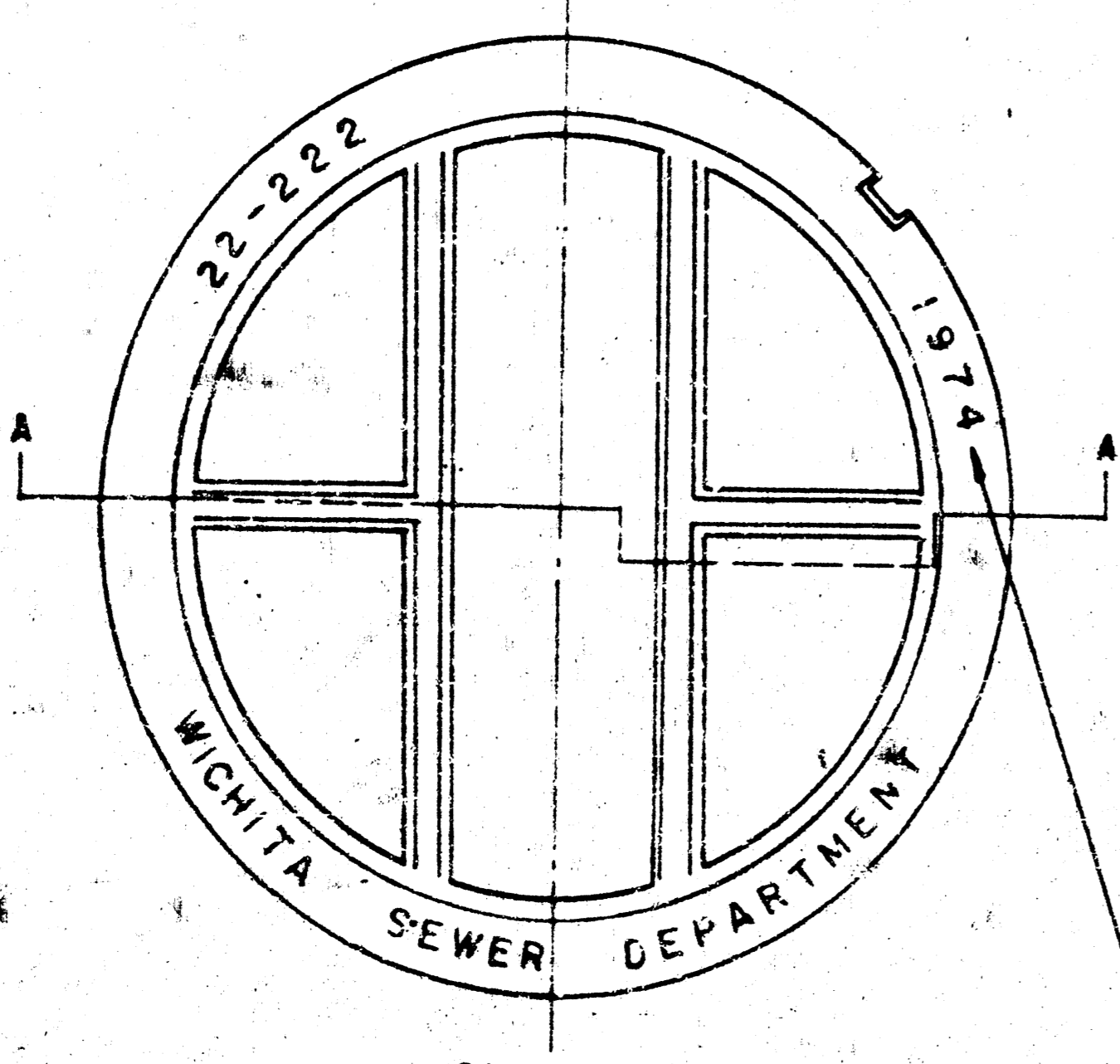
MORTAR USED IN MASONRY CONSTRUCTION SHALL CONTAIN 8 SACKS OF CEMENT PER CUBIC YARD.

STANDARD MANHOLES TYPE "C" AND STANDARD DROP MANHOLES TYPE "C" SHALL BE BID AS STANDARD MANHOLES FOR THE TYPE AND DIAMETER INDICATED.

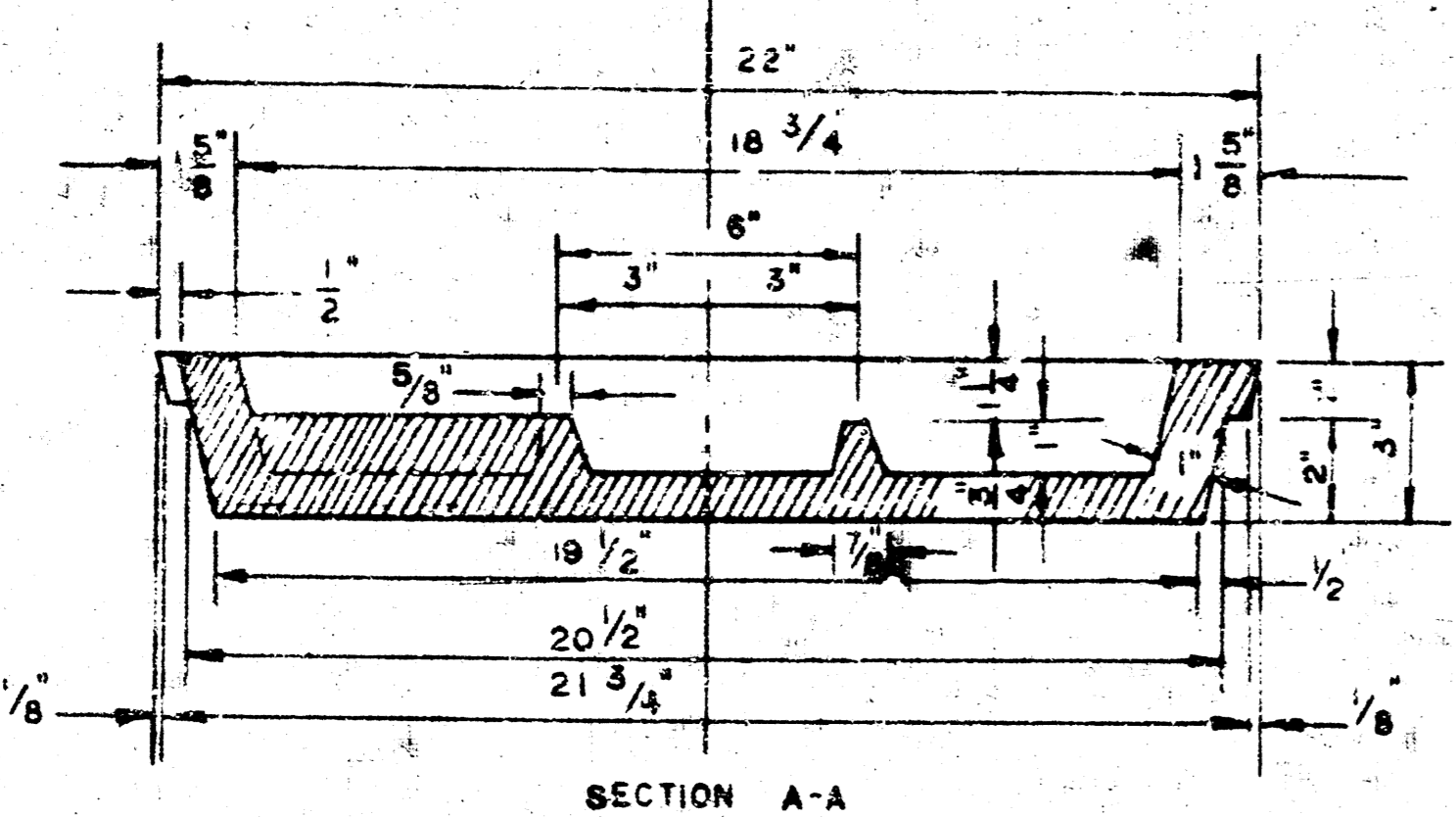
OUTSIDE DROP MANHOLES TYPE "C" SHALL BE BID AS STANDARD OUTSIDE DROP MANHOLES FOR THE TYPE AND DIAMETER INDICATED. ALL MANHOLE DIAMETERS WILL BE 4 FT. UNLESS INDICATED OTHERWISE. MANHOLES WITH PIPE SIZES LARGER THAN 24" SHALL BE 5 FT. DIAMETER.

THE FLOORS OF ALL MANHOLES SHALL BE SHAPED TO INCREASE HYDRAULIC EFFICIENCY USING 8 SACK SAND MIX CONCRETE.

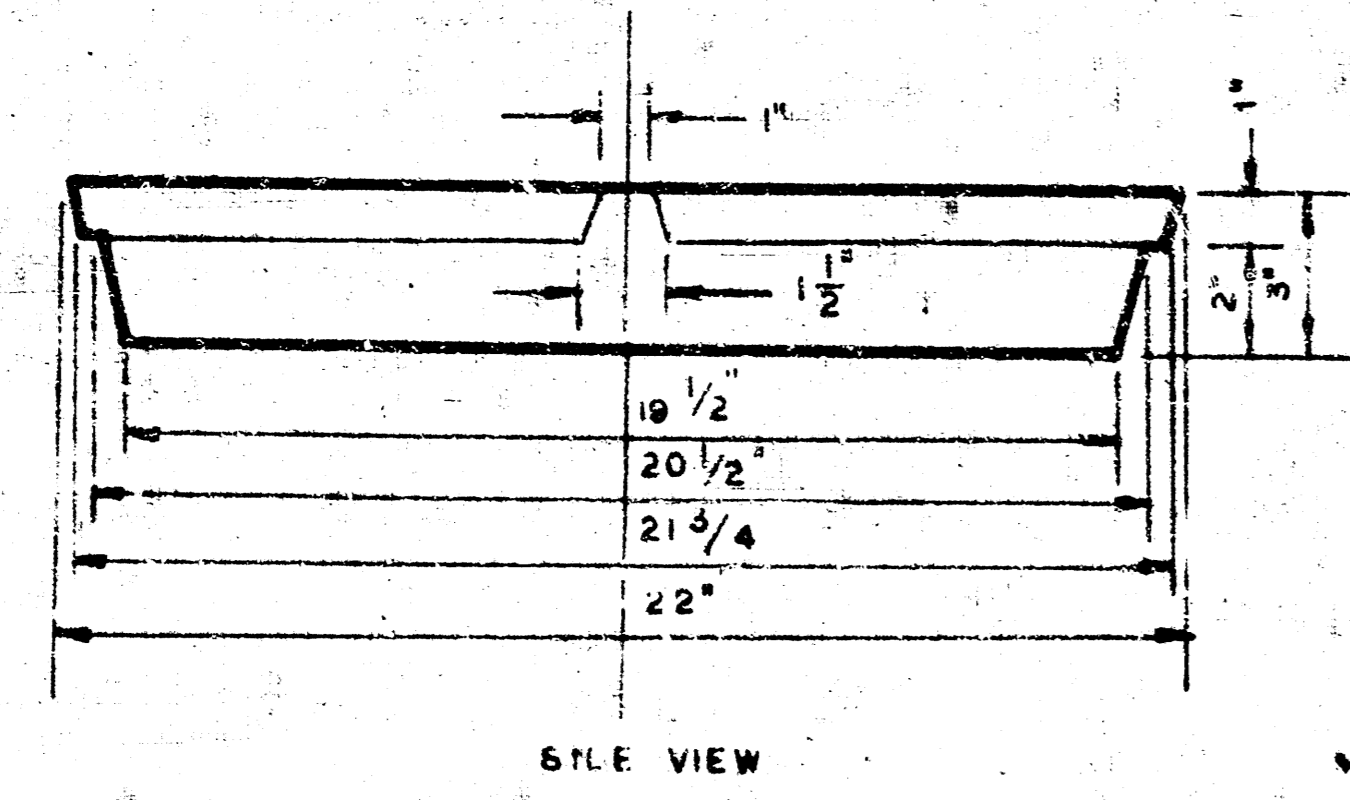
CAST IN PLACE CIRCULAR CONCRETE MANHOLES ARE TO BE CONSTRUCTED ONLY ON SEWERS NOT SUBJECT TO DETERIORATION OF CONCRETE DUE TO FORMATION OF HYDROGEN SULFIDE GAS AND IN LOCATIONS WHERE IT IS OBVIOUS THAT ANY ADJUSTMENT OF THE MANHOLE TOP ELEVATION WHICH MAY BE NECESSARY WILL NOT REQUIRE MODIFICATION OF THE CONCRETE BARREL.



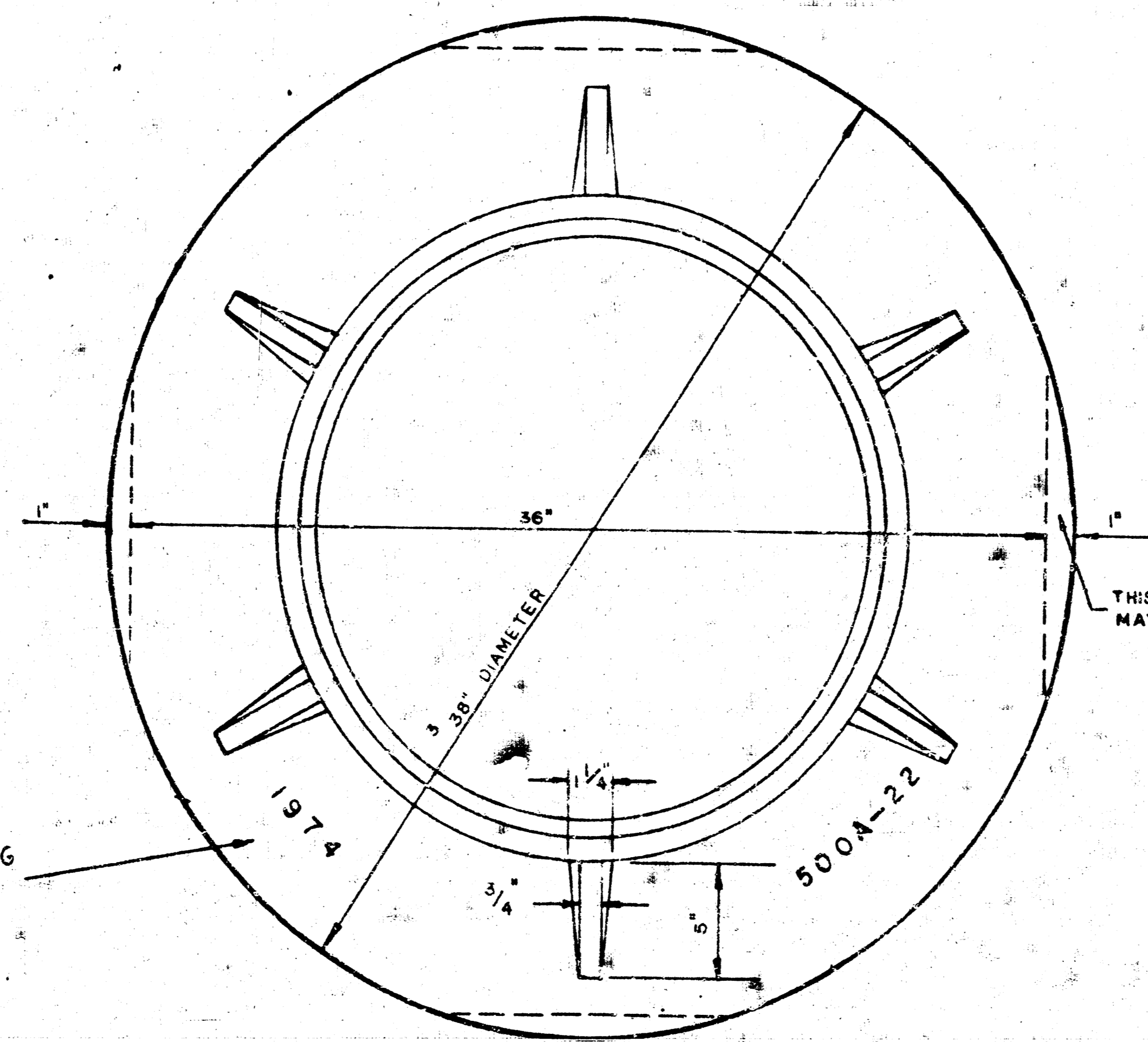
**MANHOLE COVER**  
WEIGHT 110 LBS.



**MANHOLE COVER**



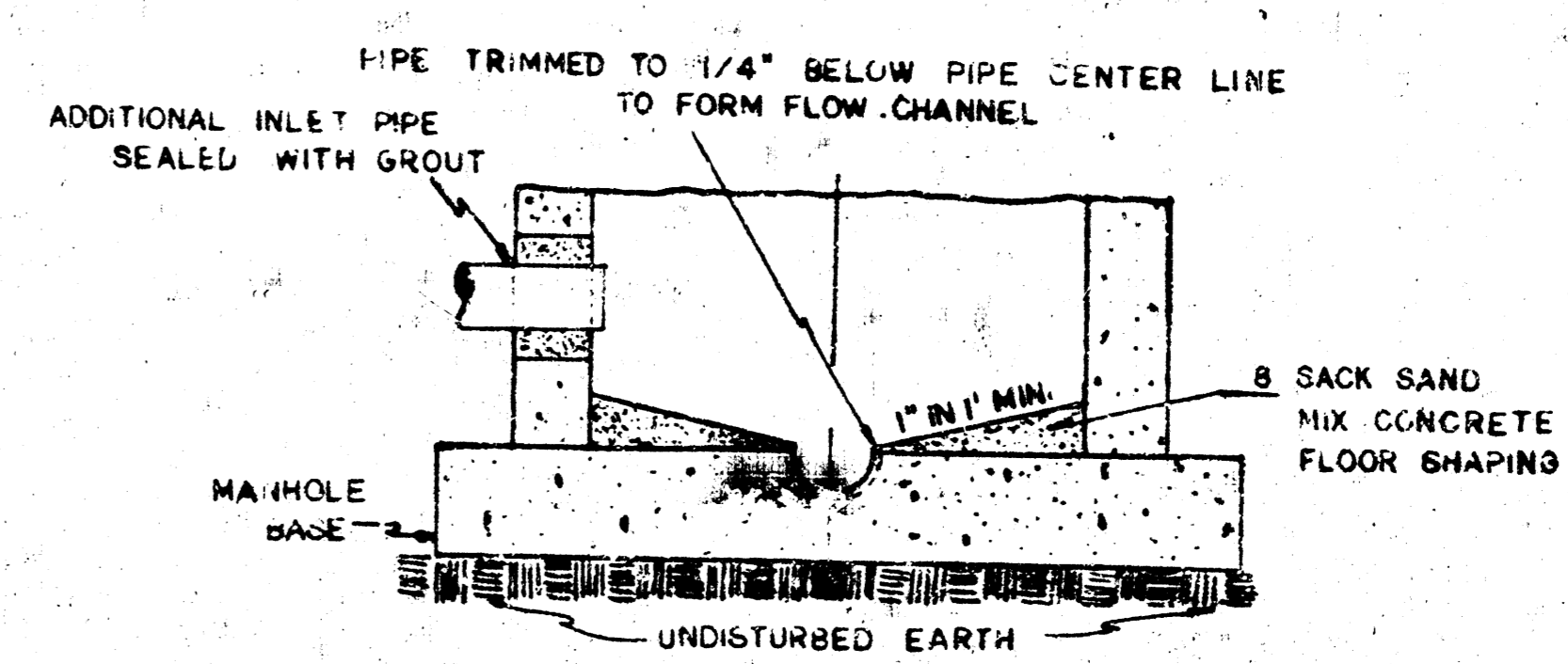
**MANHOLE COVER**



**MANHOLE RING**  
WEIGHT 325 LBS. RING NO. 500A  
WEIGHT 500 LBS. RING NO. 500AS

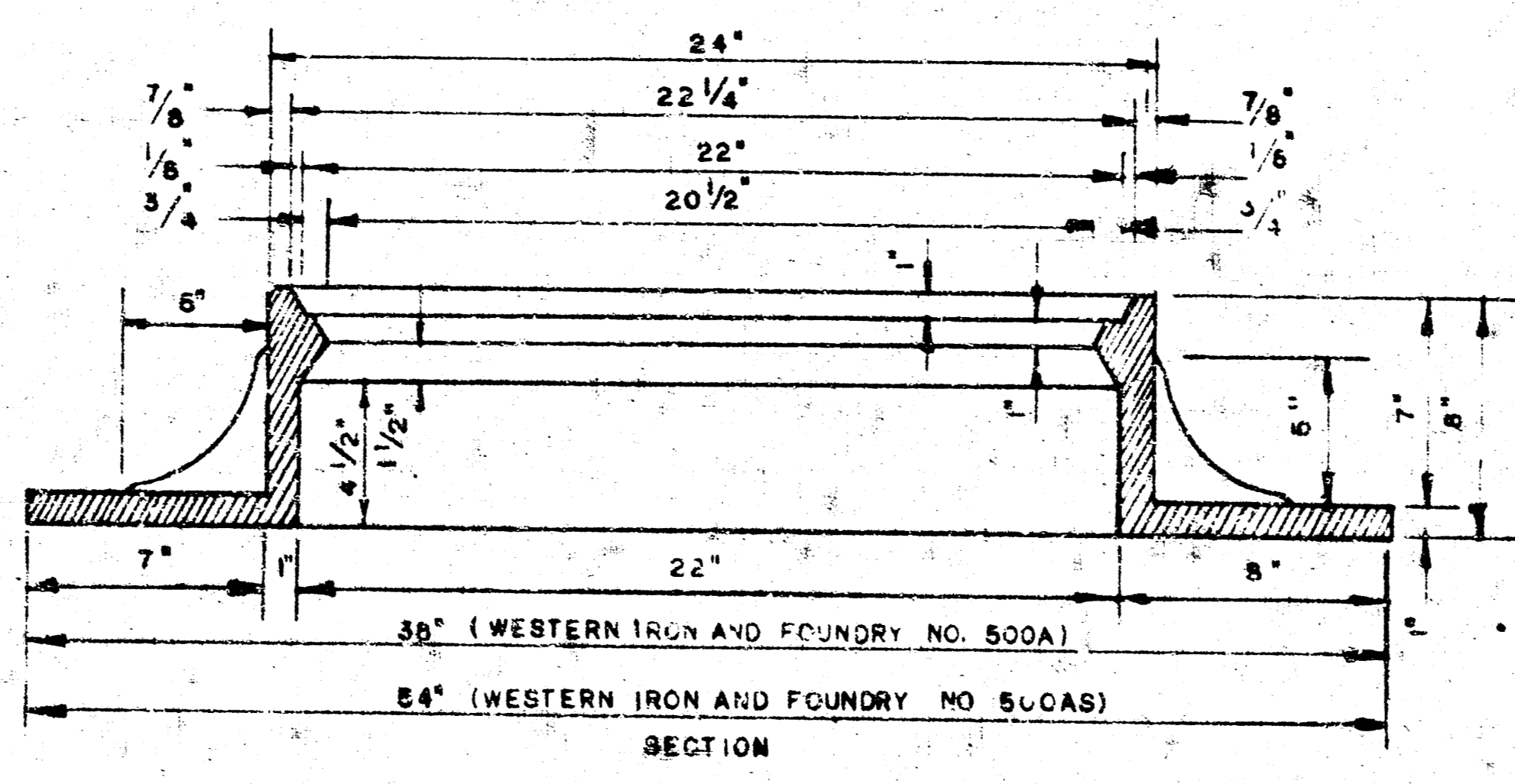
OUTSIDE CIRCUMFERENCE OF COVER AND THE INNER FACE AND SEAT OF RING TO BE MACHINE FIT

YEAR CASTING IS MADE



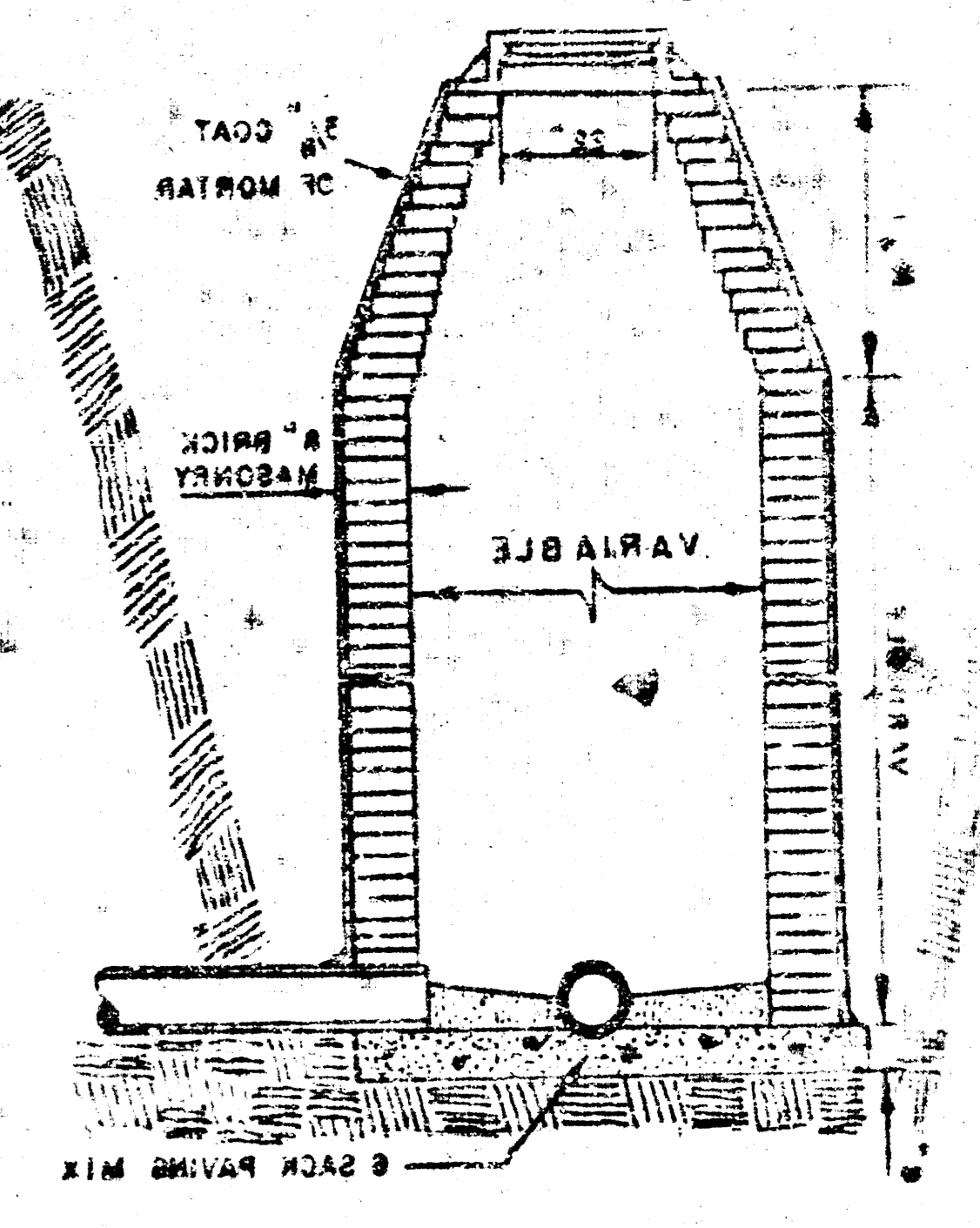
**SECTIONAL ELEVATION-INVERT**

NOTE: OPENING FOR INLET PIPE CUT IN MANHOLE WALL AND PIPE GROUDED IN PLACE WITH NON-SHRINKING GROUT. EXTERIOR OF COMPLETED CONNECTION TO BE SEALED WITH APPROVED COATING.

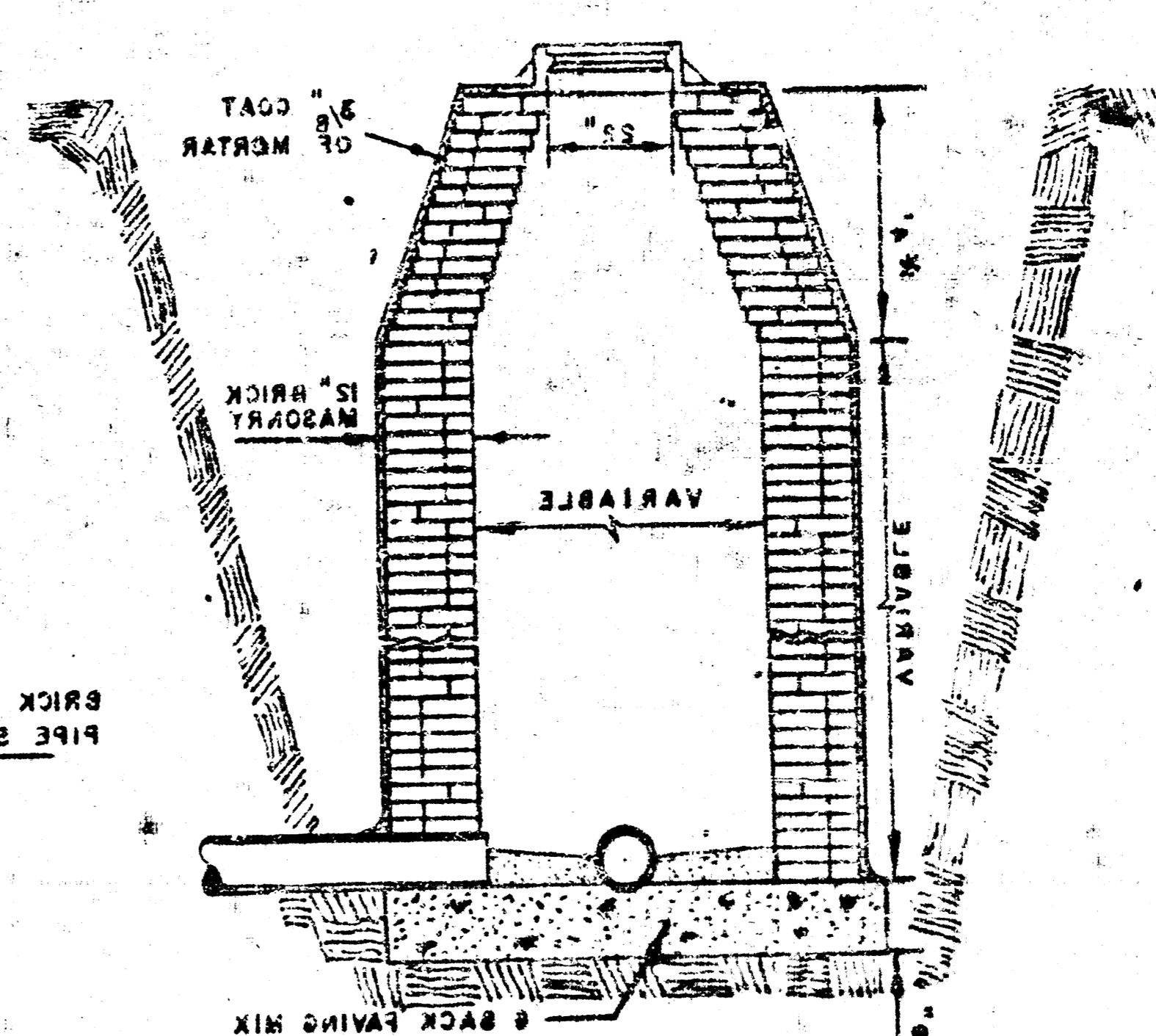


**MANHOLE RING**

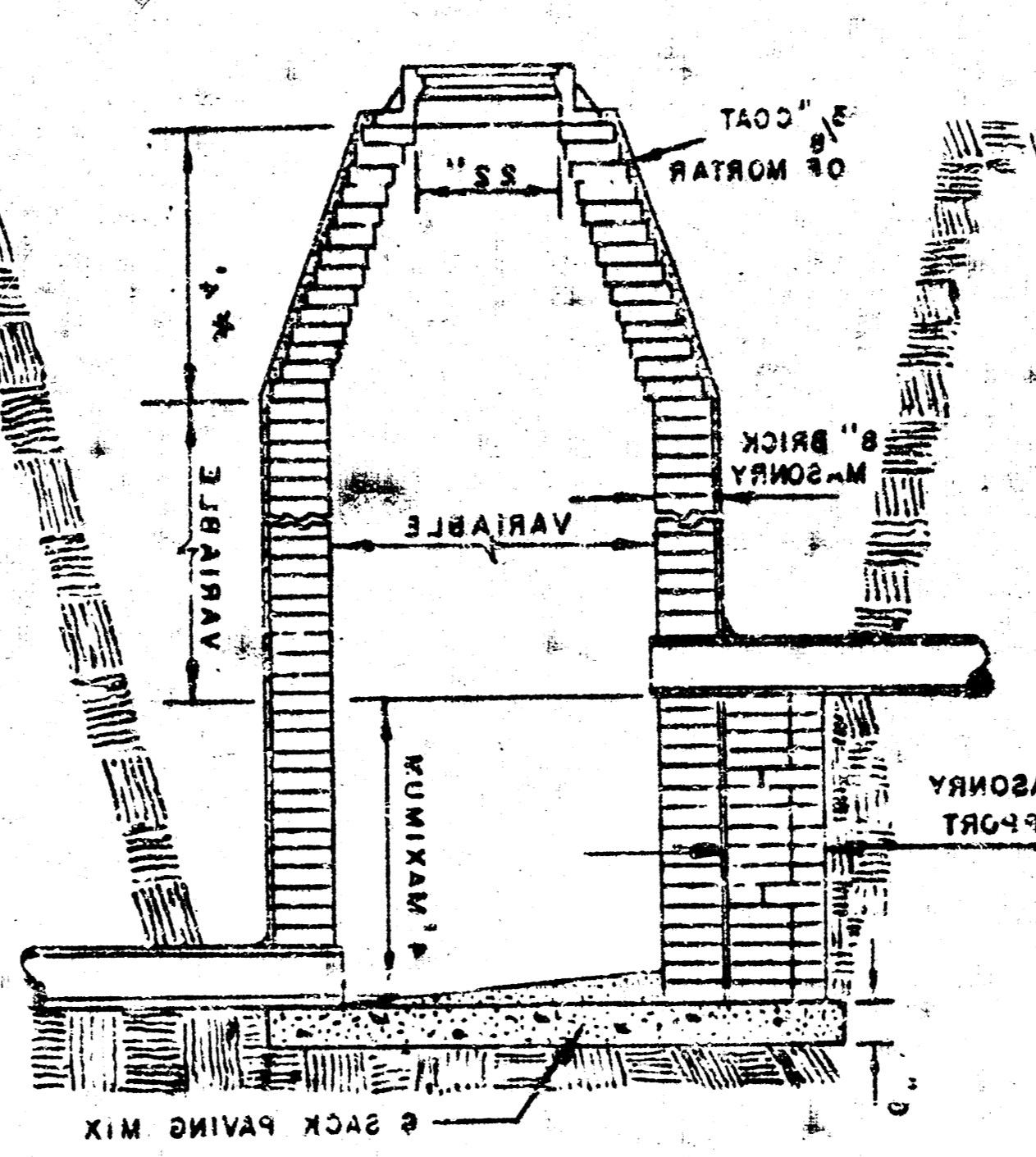
**DETAILS OF SEWER APPURTENANCE**  
ADOPTED AS STANDARD DESIGN  
BY  
**ENGINEERING DIVISION**  
**CITY OF WICHITA, KANSAS**  
R. W. LINN, CITY ENGINEER



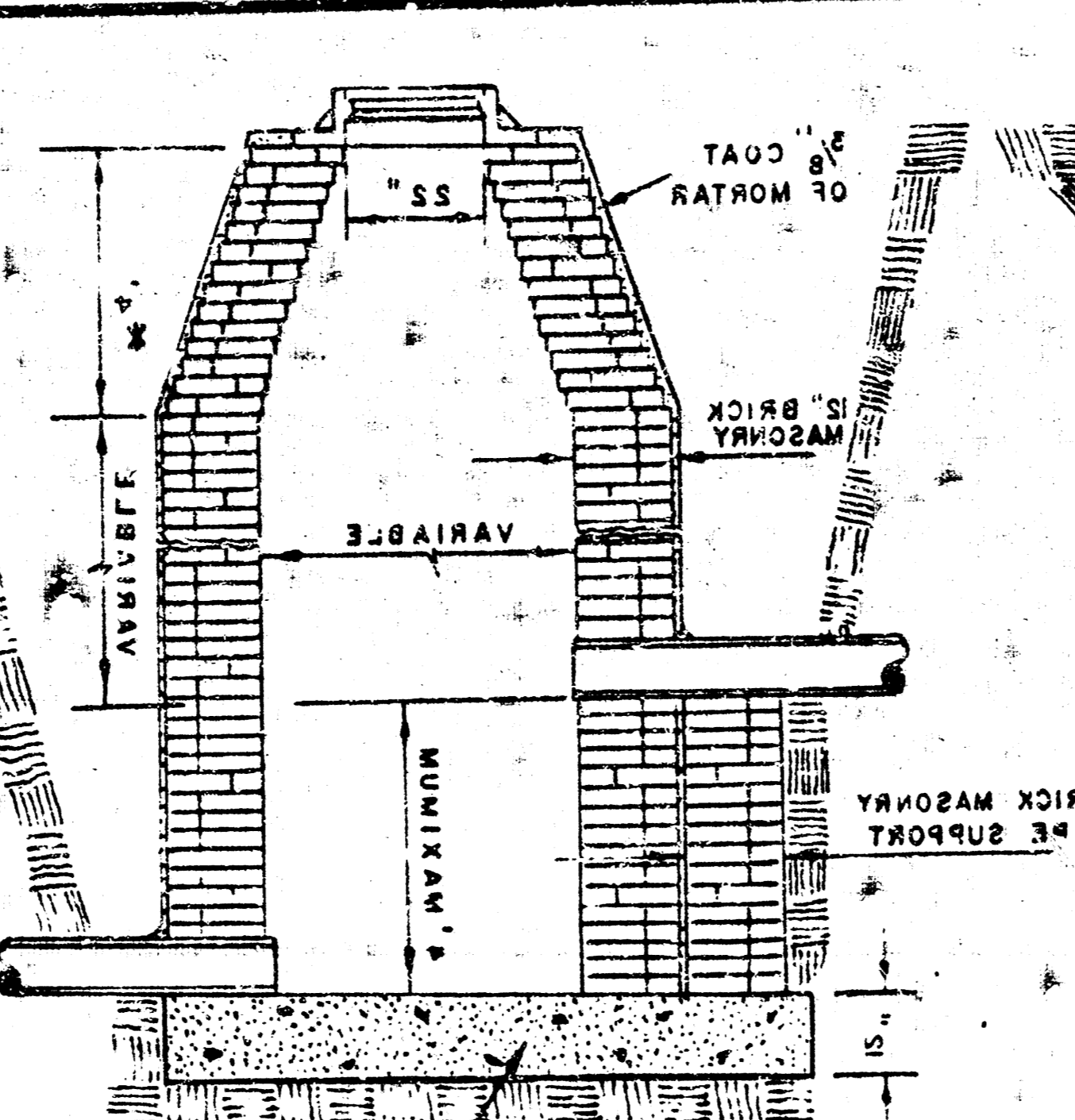
STANDARD MANHOLE  
TYPE "A"



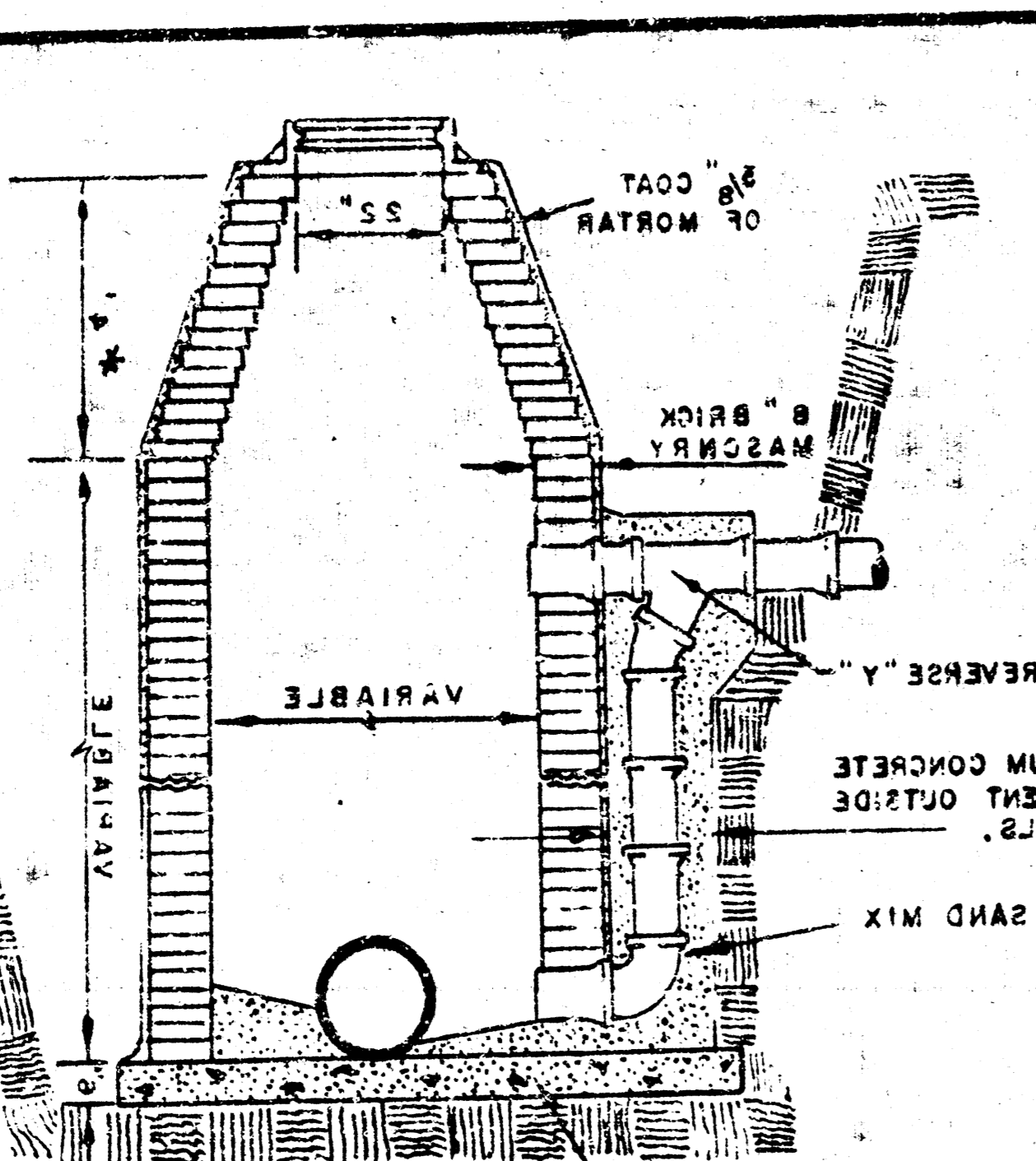
STANDARD MANHOLE  
TYPE "B"



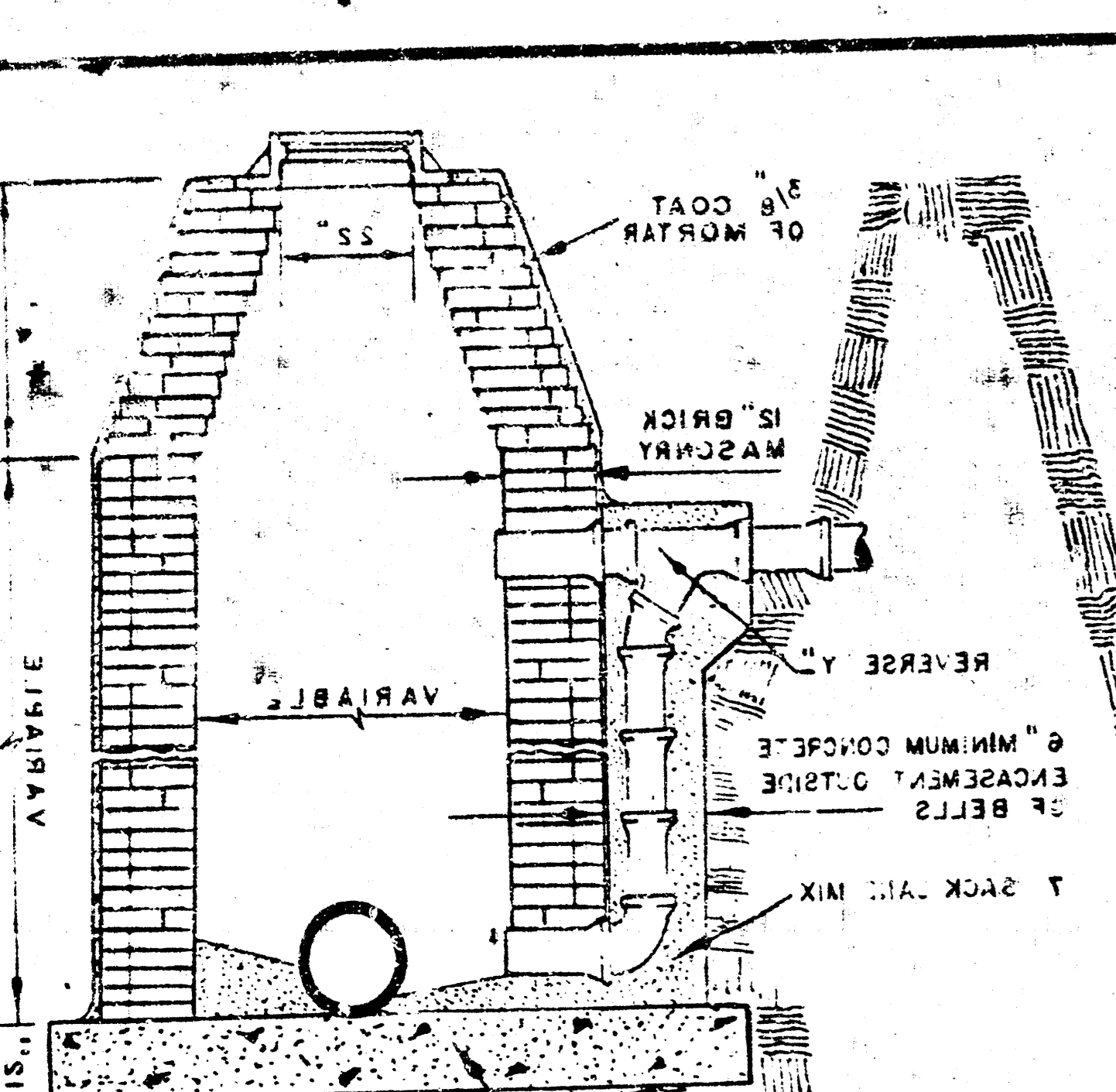
DROP MANHOLE  
TYPE "A"



DROP MANHOLE  
TYPE "B"

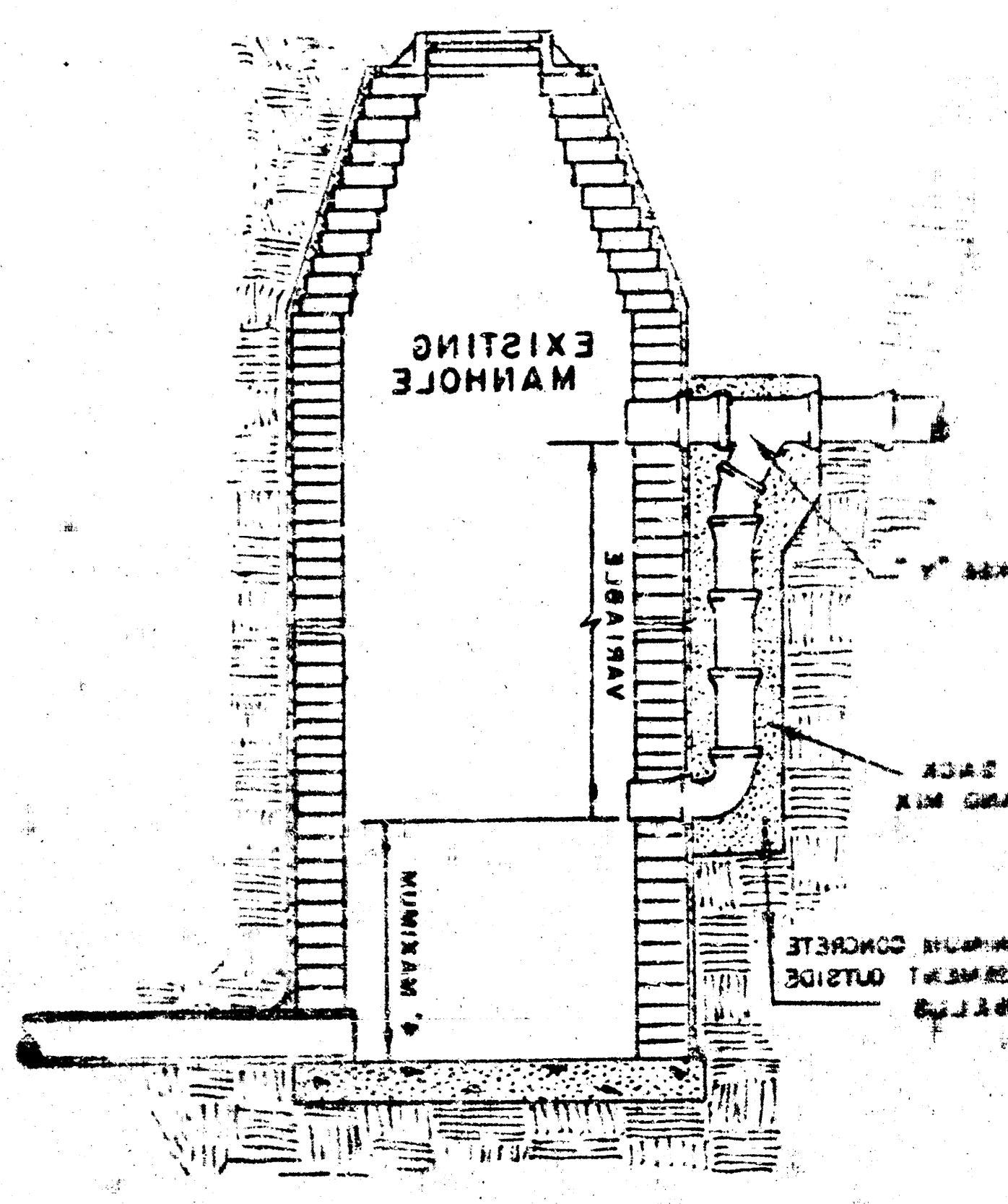


OUTSIDE DROP MANHOLE  
TYPE "A"

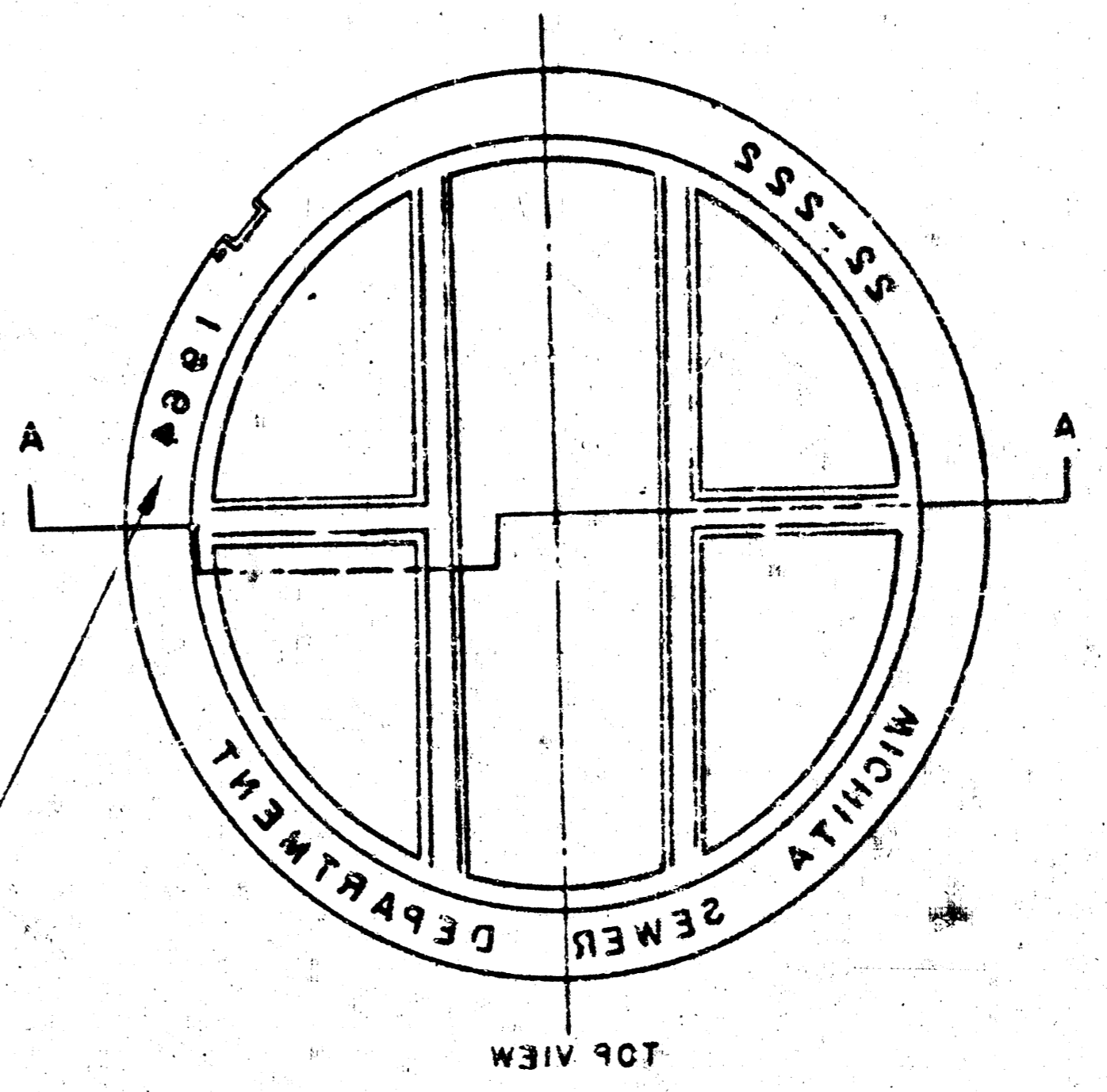


OUTSIDE DROP MANHOLE  
TYPE "B"

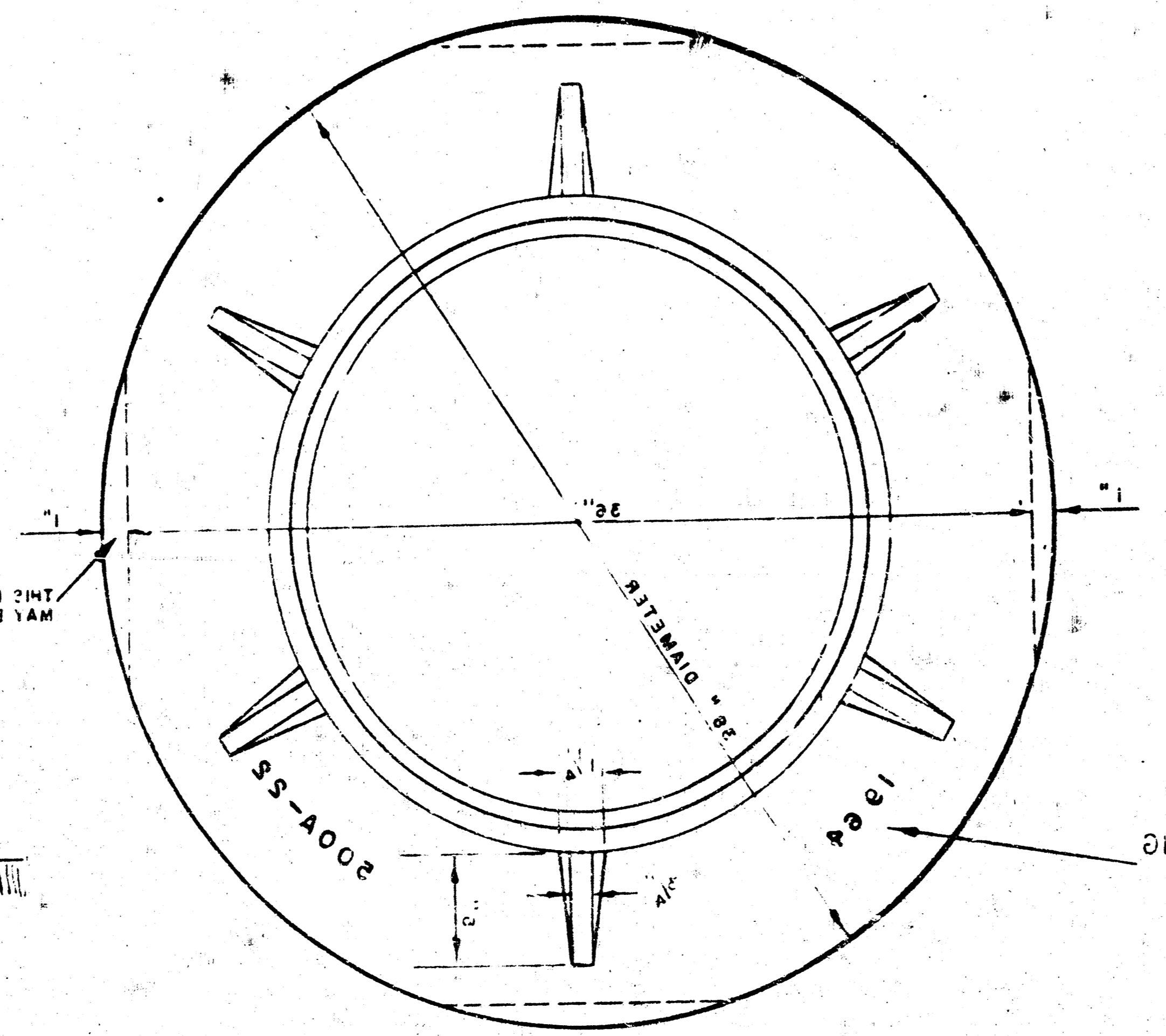
\* DRAW = 6" ON 2" DIA. M.H.



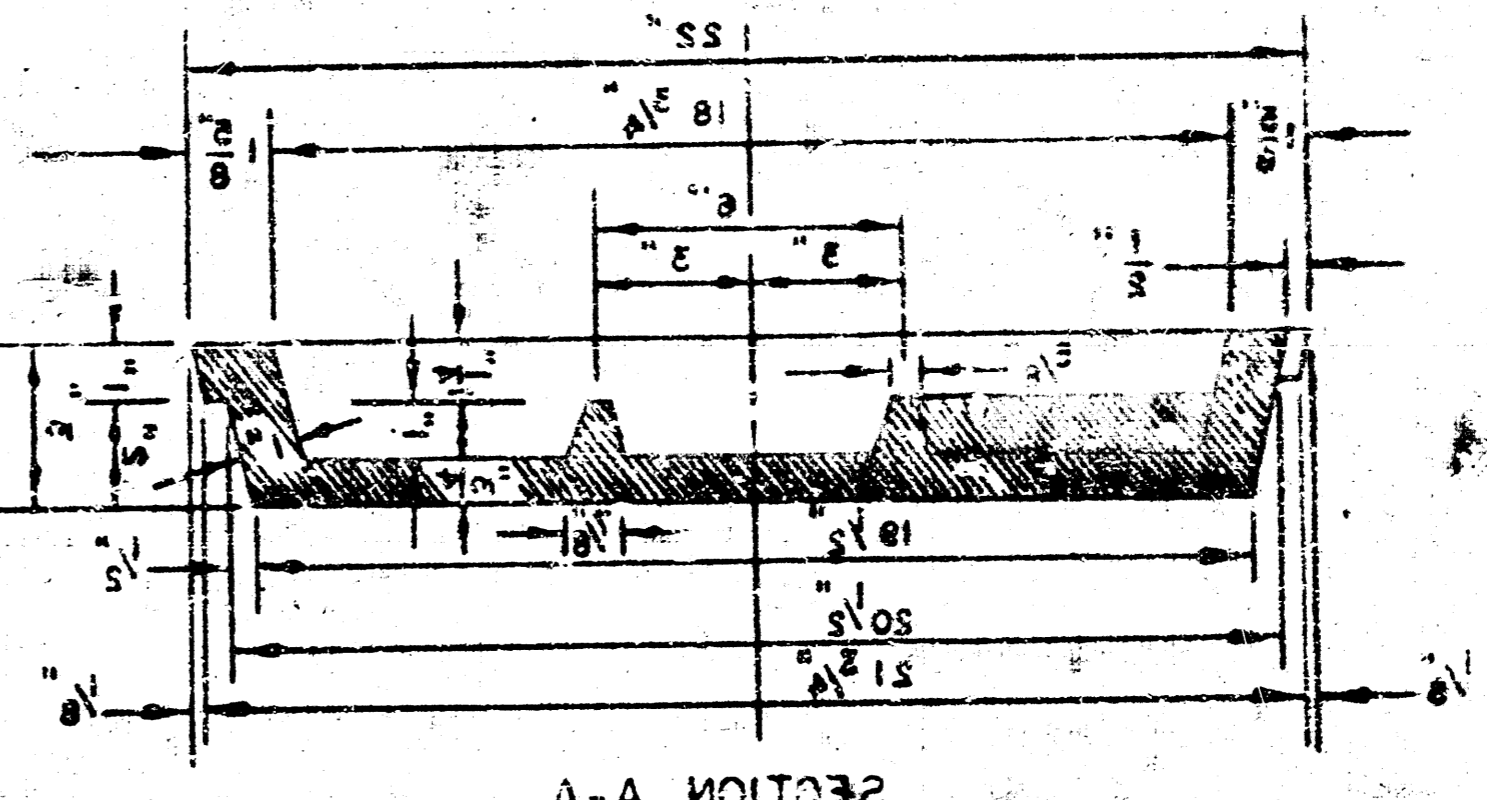
DETAIL OF DROP STACK  
FOR EXISTING MANHOLES IN GROUND WATER



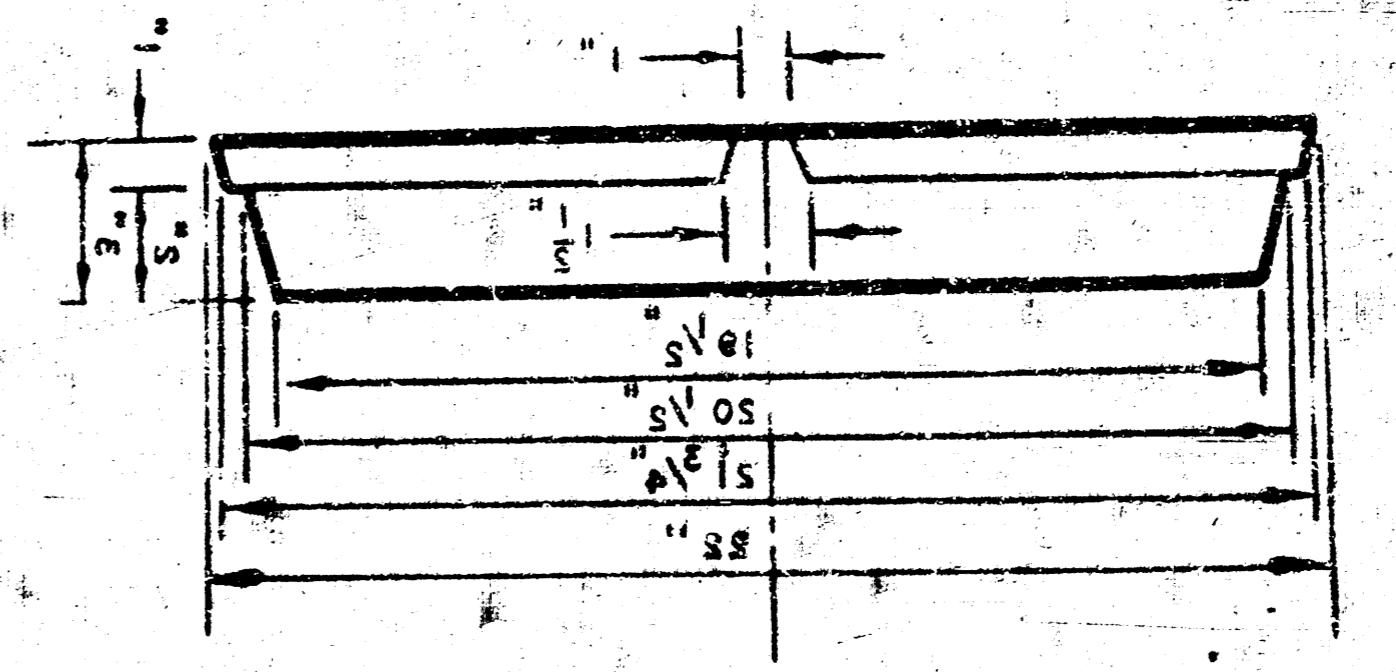
MANHOLE COVER  
WEIGHT 110 LBS.



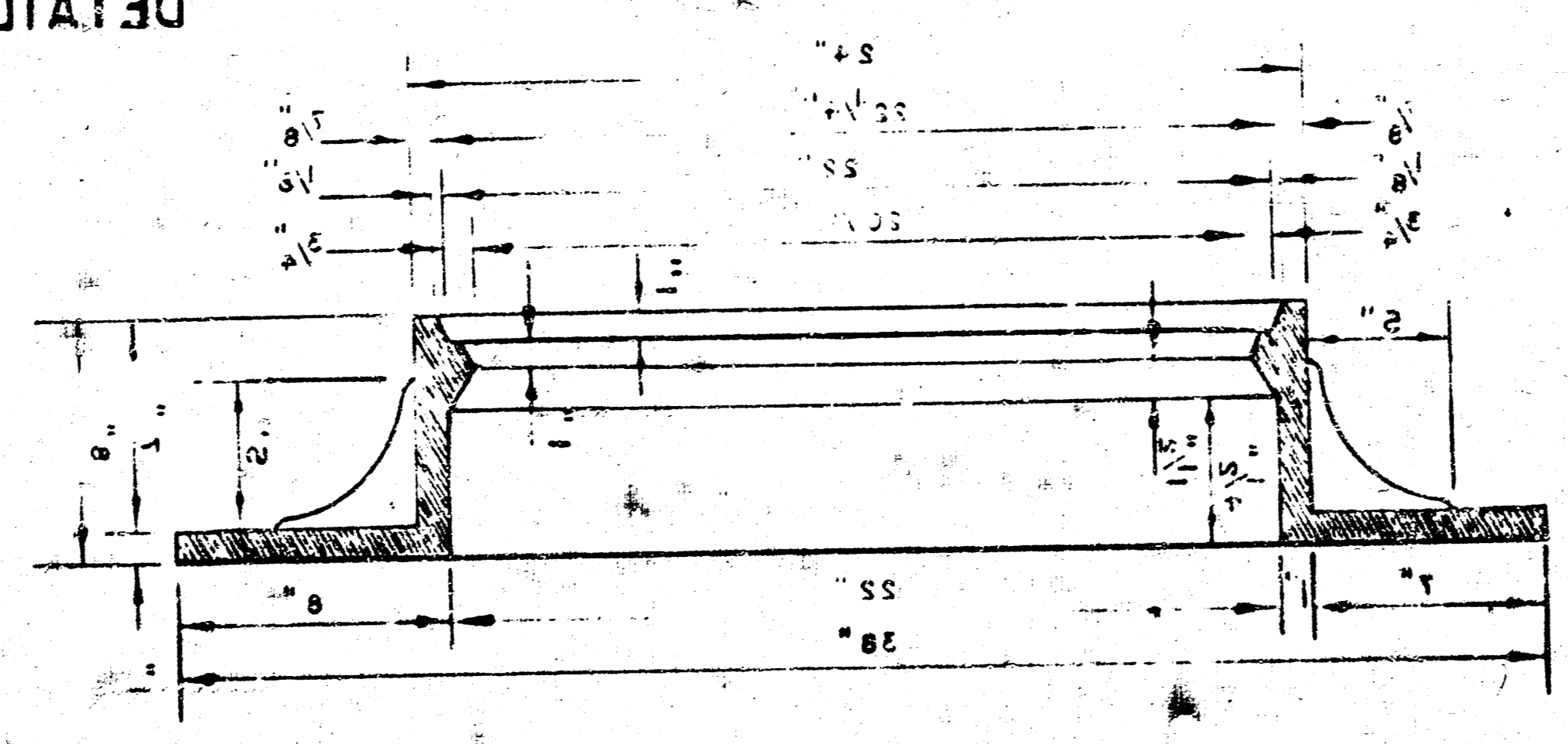
MANHOLE RING  
WEIGHT 225 LBS.



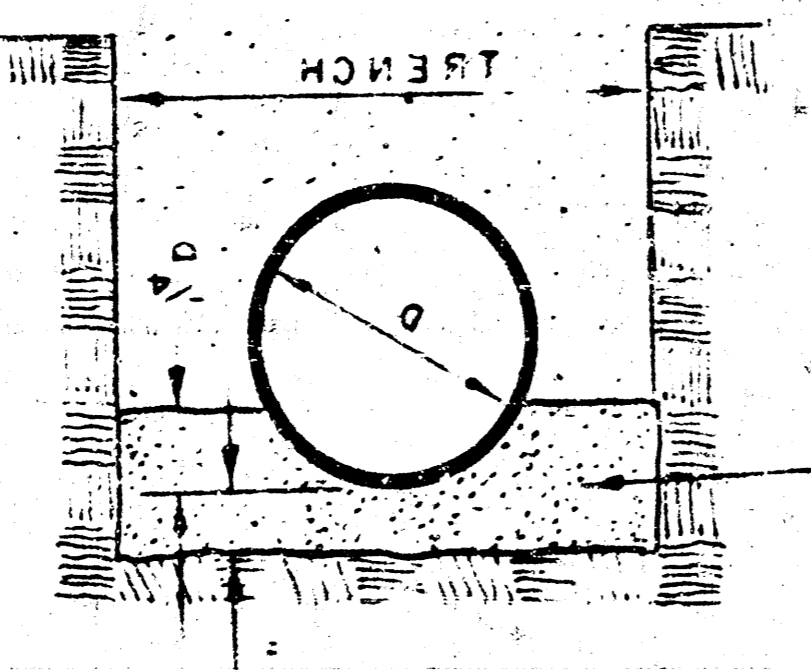
MANHOLE COVER



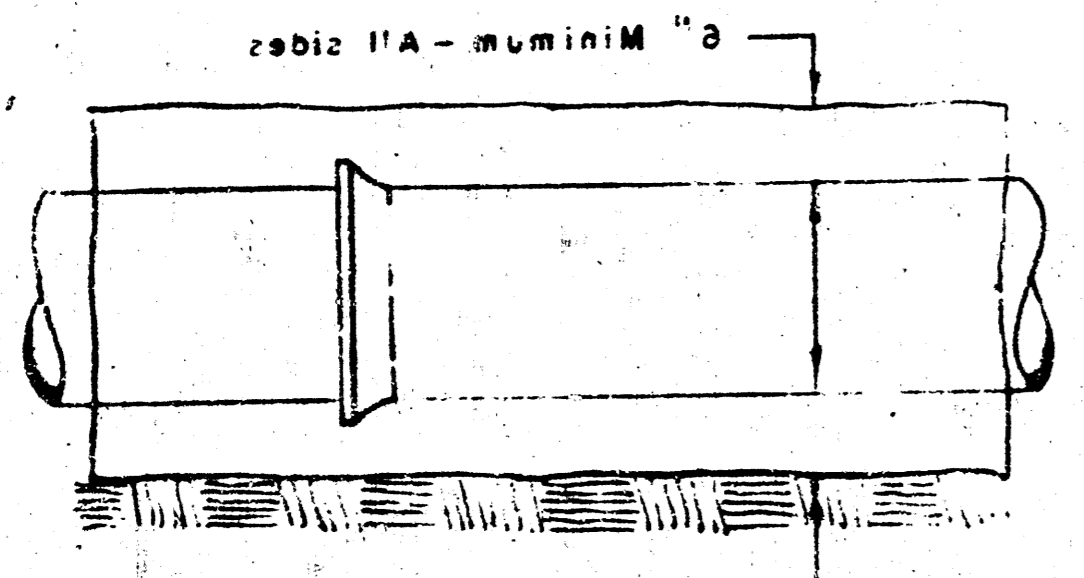
MANHOLE COVER



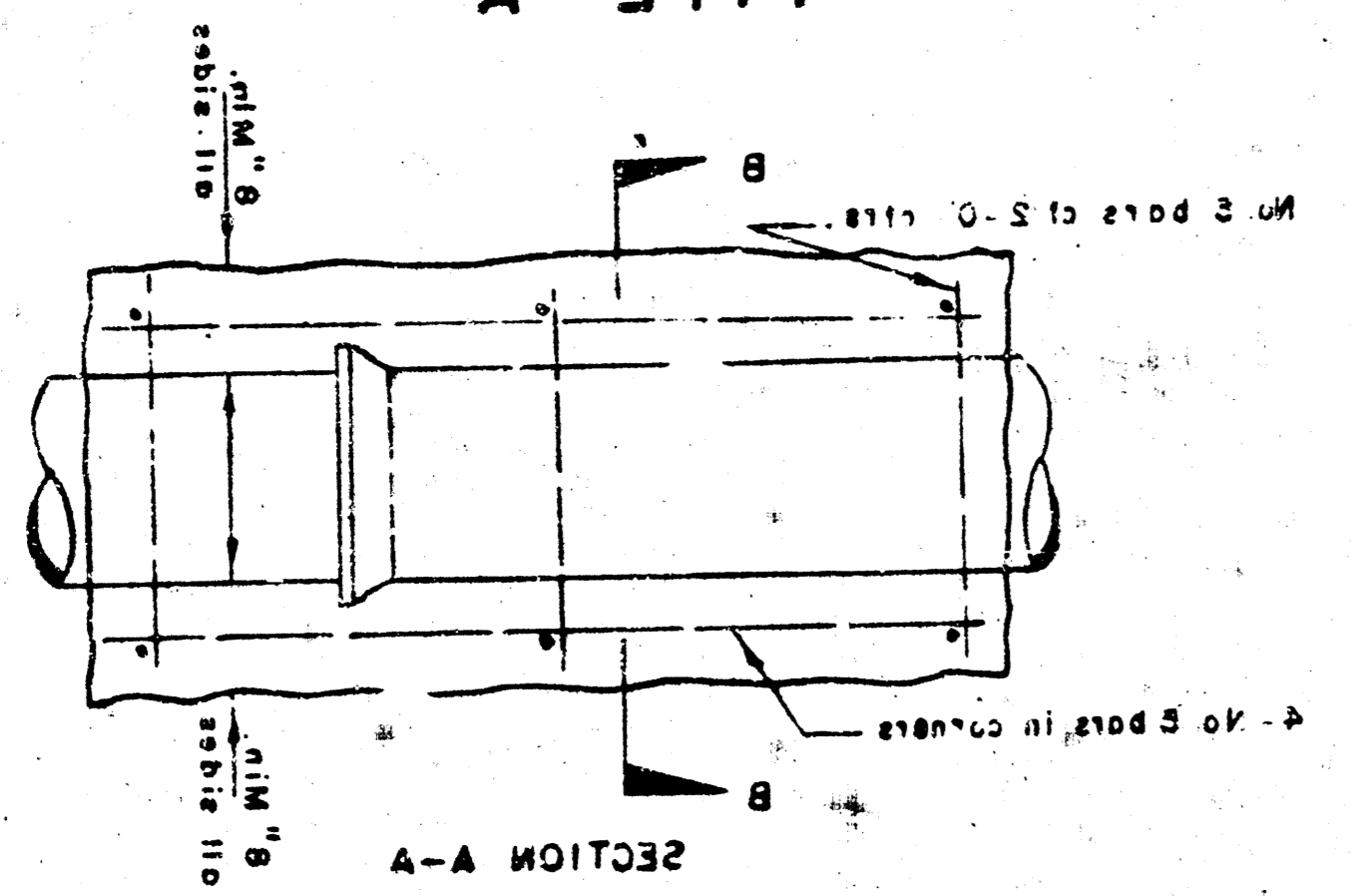
MANHOLE RING



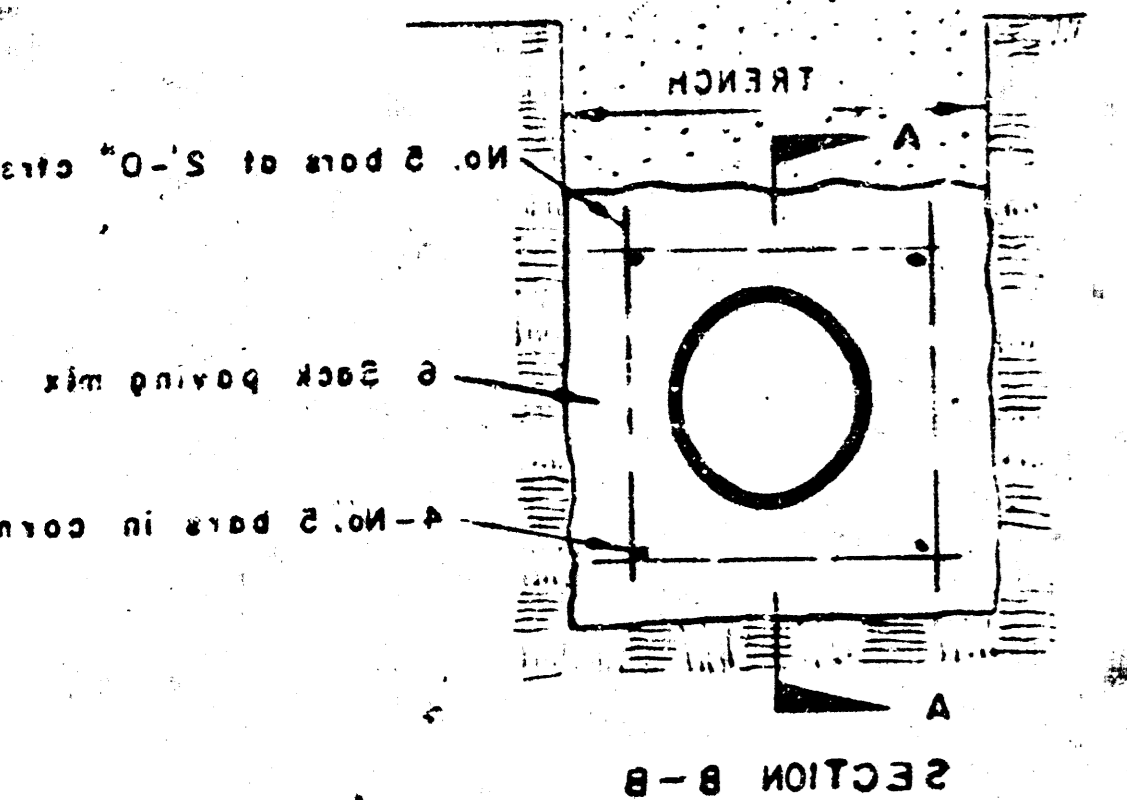
DETAIL OF CONCRETE CRADLE



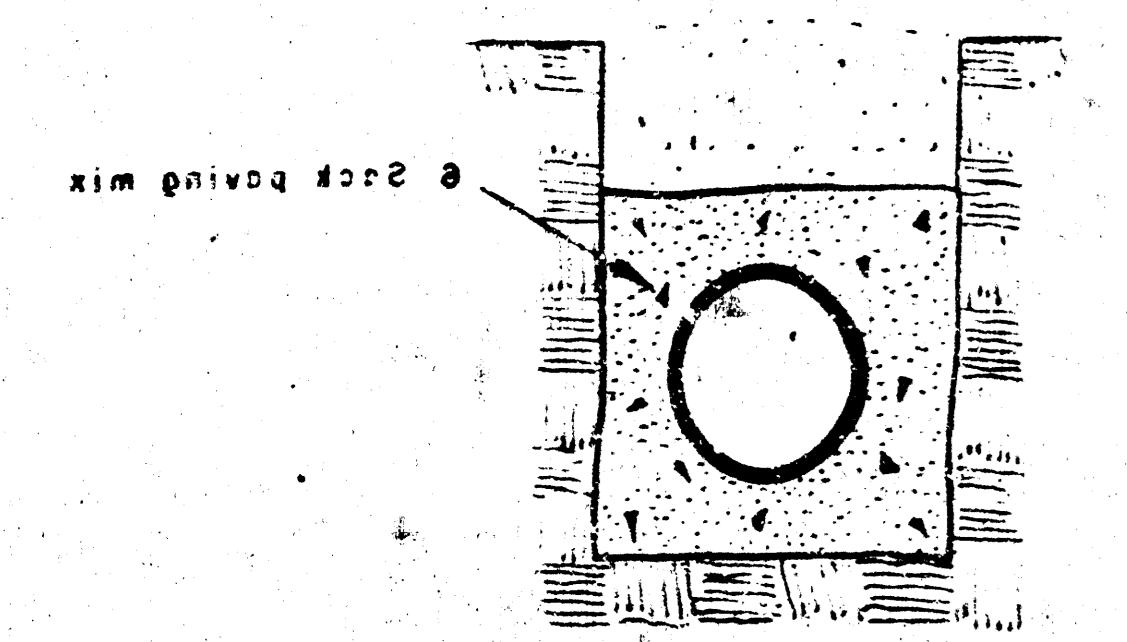
CONCRETE ENCASMENT  
FOR COVER



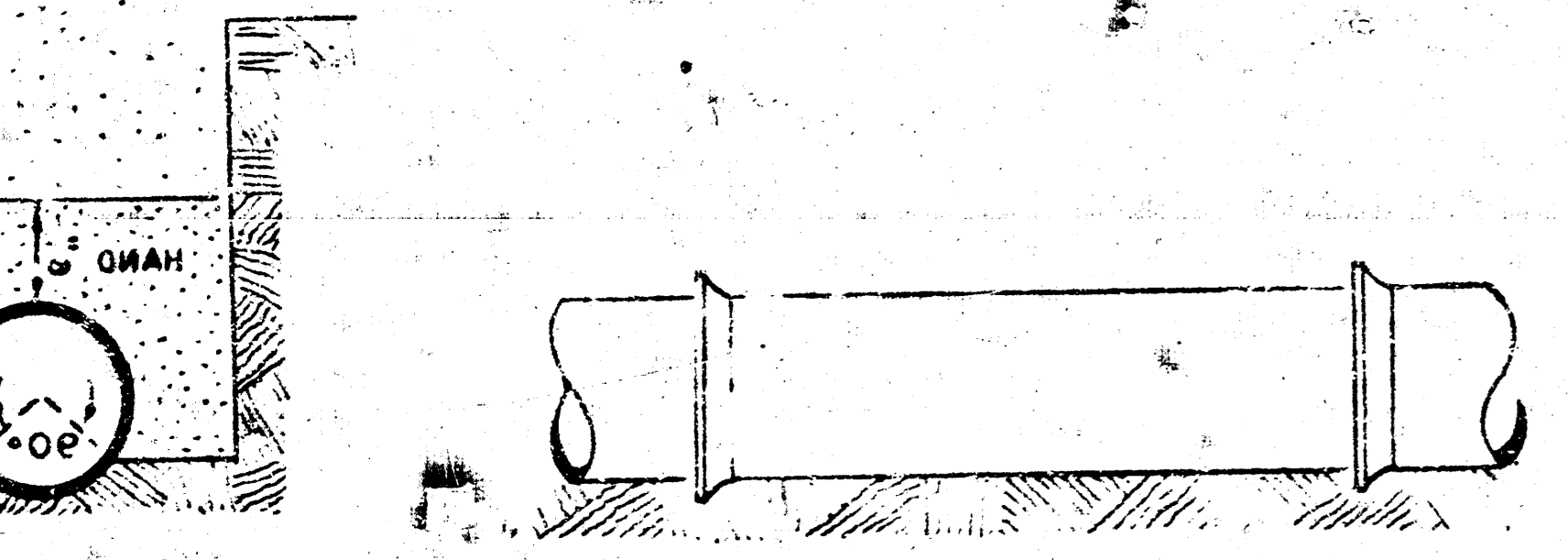
REINFORCED CONCRETE ENCASMENT  
FOR STRENGTH



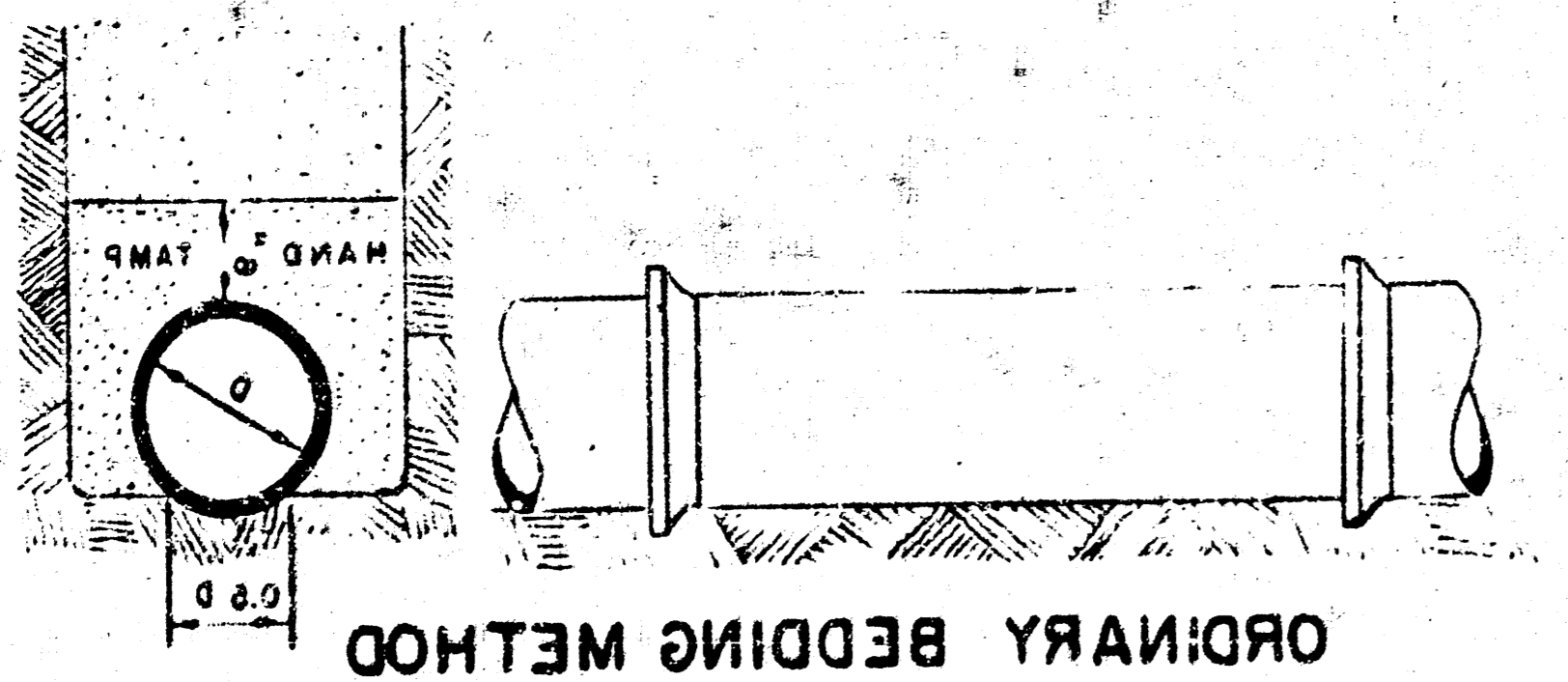
REINFORCED CONCRETE ENCASMENT



CONCRETE ENCASMENT  
FOR COVER



ORDINARY BEDDING METHOD  
FOR CLAY PIPE



ORDINARY BEDDING METHOD  
FOR REINFORCED CONCRETE PIPE

**MANHOLES**  
THE CONCRETE USED FOR MORTAR IN MANHOLES SHALL CONTAIN 8 SACKS OF CEMENT PER CUBIC YARD. STANDARD MANHOLES AND DROP MANHOLES, REGARDLESS OF DIAMETER, SHALL BE BID AT ONE PRICE AS STANDARD MANHOLES. SINGLE OR DOUBLE OUTSIDE DROP MANHOLES SHALL BE BID AT ONE PRICE AS OUTSIDE DROP MANHOLES. ALL MANHOLES WITH PIPES LARGER THAN 24" SHALL BE 3' DIAMETER UNLESS OTHERWISE SPECIFIED ON PLAN. ALL M.H.'S WITH PIPES 24" & SMALLER SHALL BE 4' DIA.

DETAILS OF  
**SEWER APPURTENANCES**  
ADOPTED AS STANDARD DESIGN  
BY  
ENGINEERING DIVISION  
CITY OF WICHITA, KANSAS  
R. W. LINN  
CITY ENGINEER