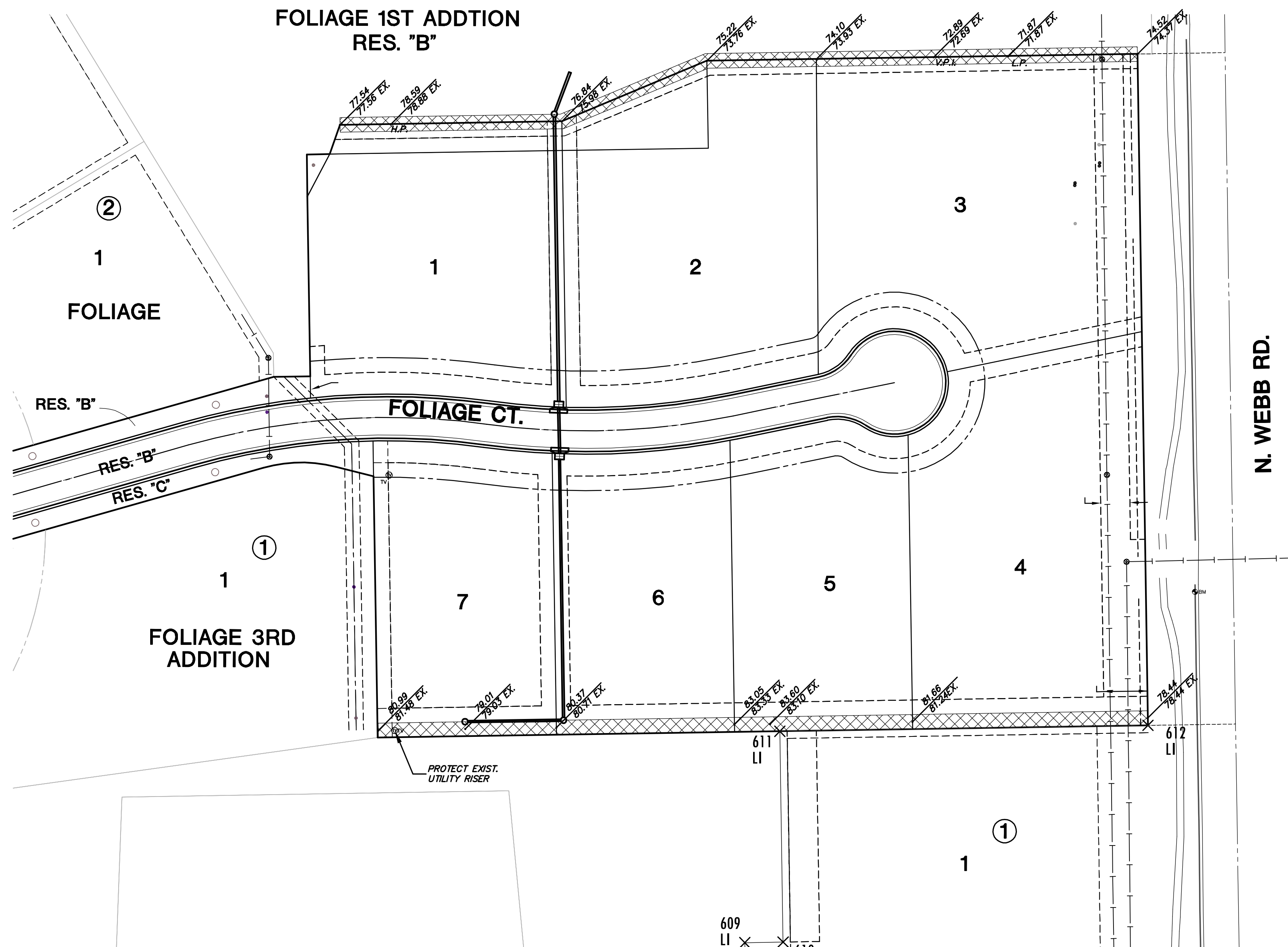
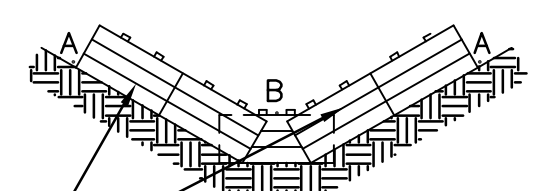


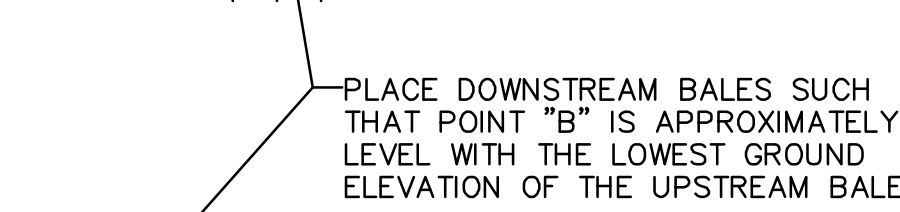
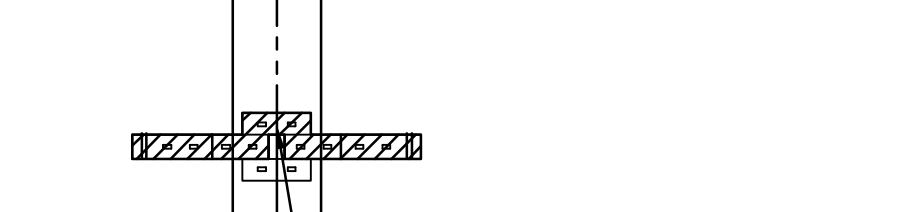
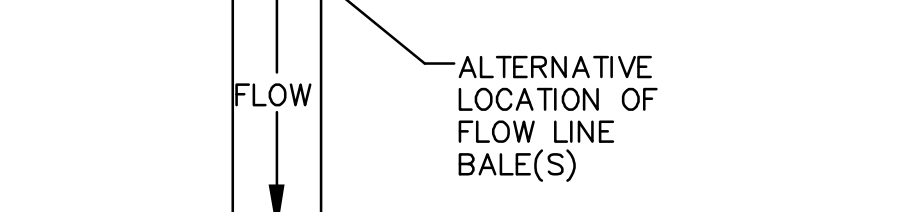
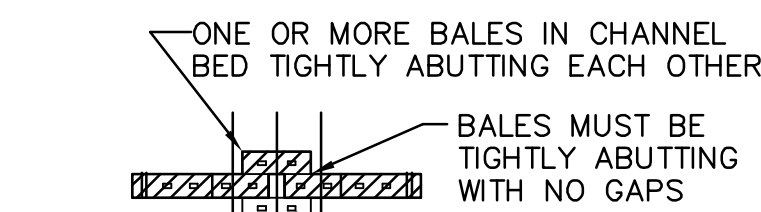
STORM WATER SEWER PLANS
FOLIAGE FOURTH ADDITION



END POINTS "A" MUST BE HIGHER THAN FLOW LINE POINT "B"



OVERLAP SIDE BALES ON FLOW LINE BALE(S) TO PREVENT GAPS

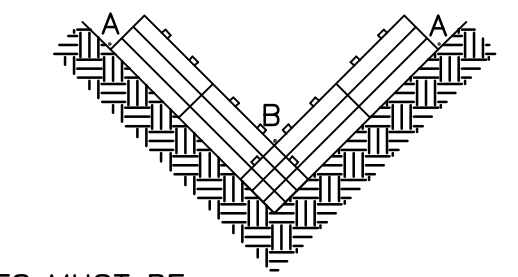


WIDE CHANNELS

18 INCH BY 36 INCH BALES	VALUE OF Z	MINIMUM NUMBERS OF BALES
	10 OR <	1**
	10-35	2**
	35-50	3**
	50-70	4**
	70 OR >	NOT RECOMMENDED

** ASSUMES DEPTH OF WATER ABOVE POINT "B" WILL NOT EXCEED 6 INCHES

END POINTS "A" MUST BE HIGHER THAN FLOW LINE POINT "B"



BALES MUST BE TIGHTLY ABUTTING WITH NO GAPS

PLACE DOWNSTREAM BALES SUCH THAT POINT "B" IS APPROXIMATELY LEVEL WITH THE LOWEST GROUND ELEVATION OF THE UPSTREAM BALE

NARROW CHANNELS

STRAW BALE DIKES FOR EASEMENT GRADING

UNPLATTED

UNPLATTED

FOLIAGE CENTER 2ND ADDITION

**Graded widths and slopes may vary as approved by the Engineer to minimize conflict with existing trees.

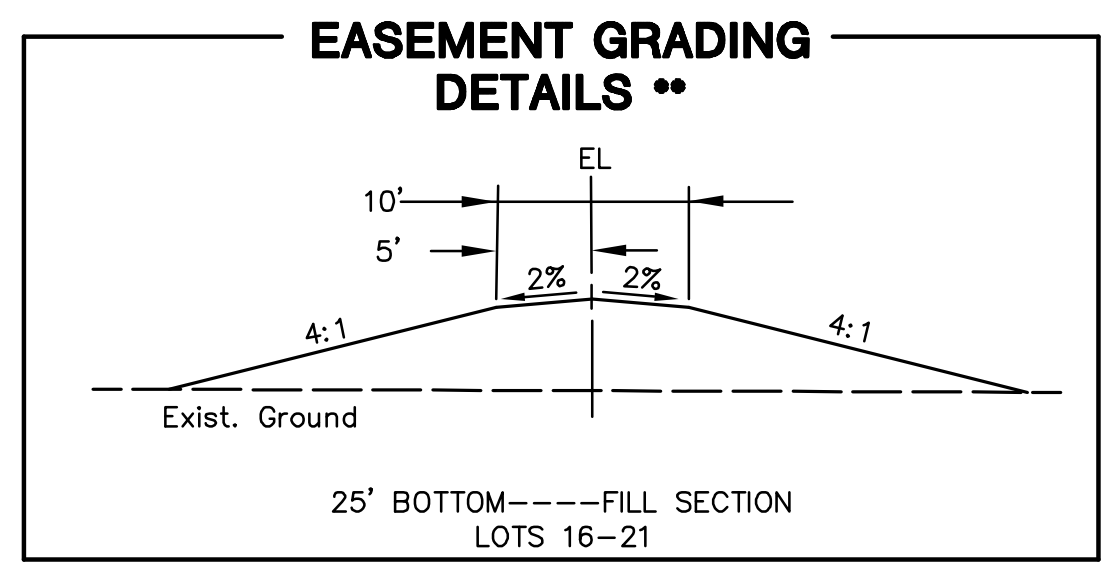
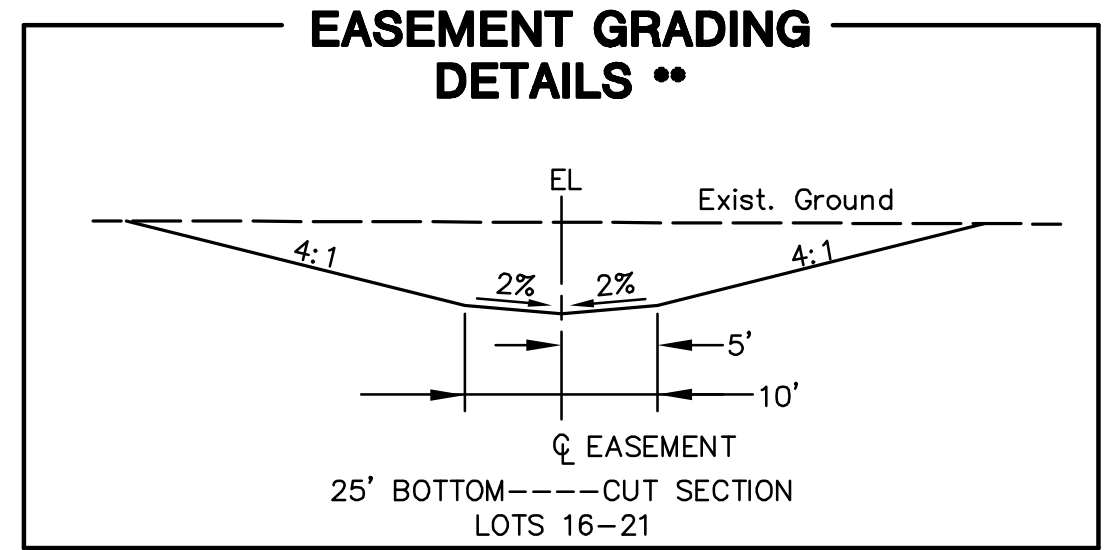
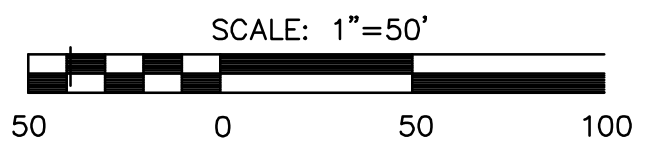
Easement Grading will be bid on a lump sum basis for grading the easements to the profile and elevations shown on the Easement Grading Plan (this sheet). Approximate quantities of earthwork for easement grading are shown below. These approximate quantities are given for information only. The Contractor should verify the quantities when preparing the proposal.
Cut 206 C.Y. (Approximate)
Fill 166 C.Y. (Approximate)

NOTE:

EXCESS EXCAVATION FROM EASEMENT GRADING SHALL REMAIN ON SITE AND PLACED IN AREAS AS DIRECTED BY ENGINEER.

EASEMENT GRADING DETAILS

- = AREAS TO BE GRADED (AREA SHOWN REPRESENTS DITCH BOTTOM, SIDE SLOPES ARE NOT INCLUDED)
- = LOCATION FOR SEDIMENT CONTROL
- = LOCATION OF INLET SEDIMENT CONTROL
- = CURB INLET FILTER
- H.P. = HIGH POINT
- L.P. = LOW POINT
- M.E. = MATCH EXISTING
- 55.5 X = GRADE BREAK ELEVATION
- 38.1 = LOT CORNER ELEVATION
- 2% = PERCENT GRADING



EL=EASEMENT LINE
PL=PROPERTY LINE

EASEMENT GRADING

SHEET TITLE
04274

DESIGN BY
SRS

DRAWN BY
JWC

CHECKED BY
DFL

ISSUED
May 2008

REVISED

SHEET NO.

5 of 12