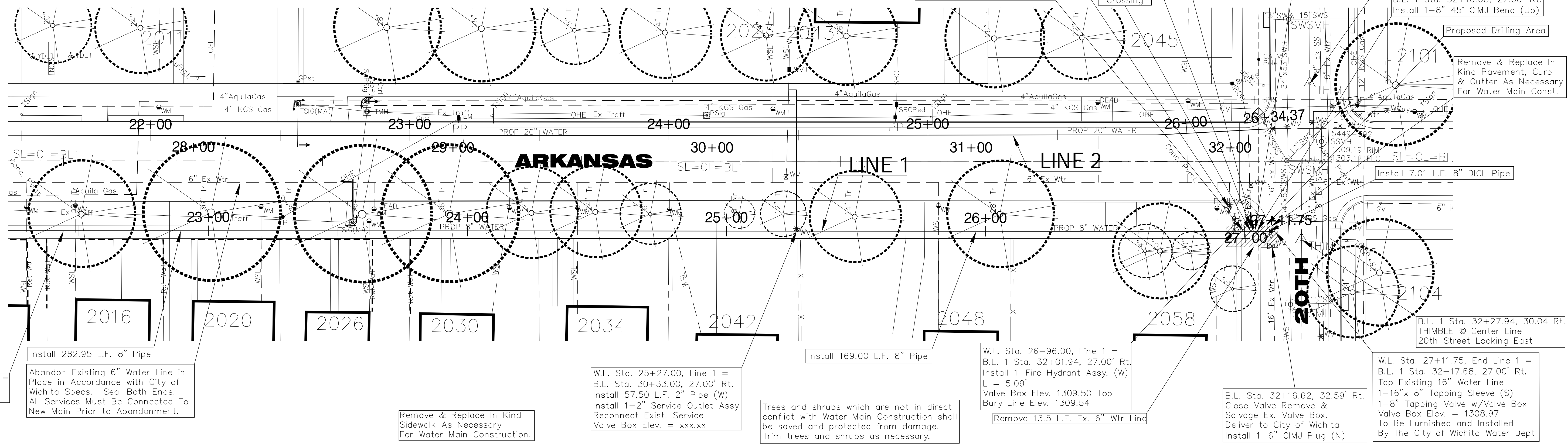


Benchmark

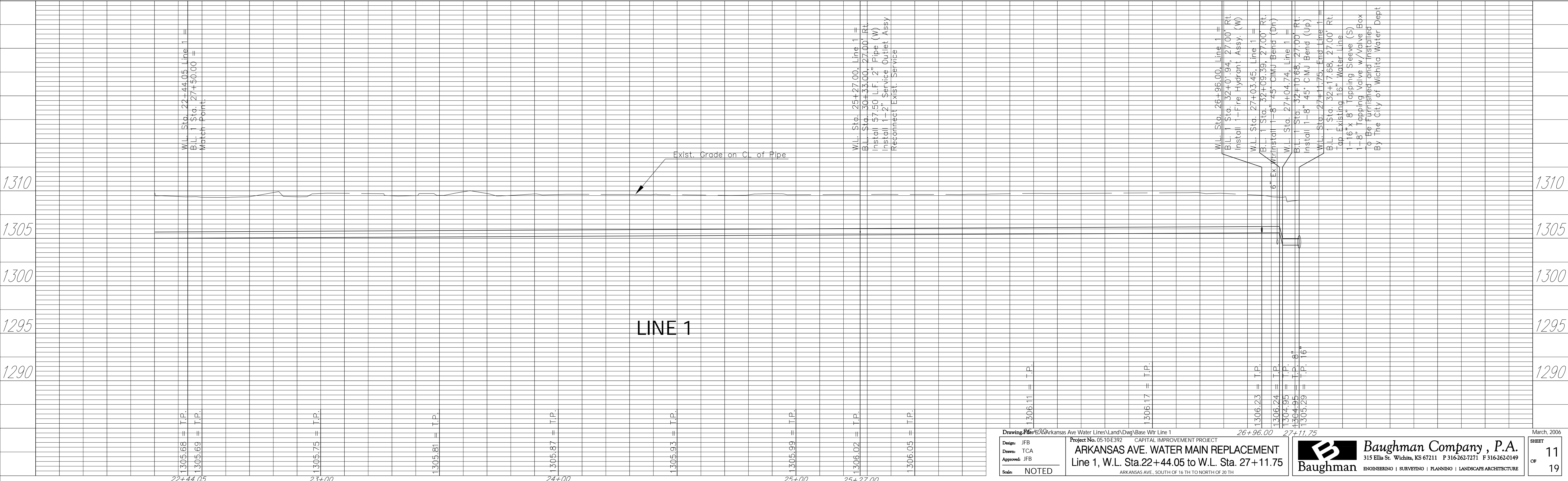
BM #6 - 1" Back of walk Located at the SW Corner of the Intersection of 20th Street & Arkansas Ave. Elev. 1309.76

Note:
See Water Meter Table For Service Locations.

SCALE:
1" = 20' Horizontal
1" = 5' Vertical



W.L. Sta. 22+44.05 Line 1 = B.L. 1 Sta. 27+50.00 = Match Point.
 Abandon Existing 6" Water Line in Place in Accordance with City of Wichita Specs. Seal Both Ends. All Services Must Be Connected To New Main Prior to Abandonment.
 Install 282.95 L.F. 8" Pipe
 Remove & Replace In Kind Sidewalk As Necessary For Water Main Construction.
 W.L. Sta. 25+27.00, Line 1 = B.L. Sta. 30+33.00, 27.00' Rt. Install 57.50 L.F. 2" Pipe (W) Install 1-2" Service Outlet Assy Reconnect Exist. Service Valve Box Elev. = xxx.xx
 Trees and shrubs which are not in direct conflict with Water Main Construction shall be saved and protected from damage. Trim trees and shrubs as necessary.
 W.L. Sta. 26+96.00, Line 1 = B.L. 1 Sta. 32+01.94, 27.00' Rt. Install 1-Fire Hydrant Assy. (W) L = 5.09' Valve Box Elev. 1309.50 Top Bury Line Elev. 1309.54
 Remove 13.5 L.F. Ex. 6" Wtr Line
 W.L. Sta. 27+11.75, End Line 1 = B.L. 1 Sta. 32+17.68, 27.00' Rt. Tap Existing 16" Water Line 1-16" x 8" Tapping Sleeve (S) 1-8" Tapping Valve w/Valve Box Valve Box Elev. = 1308.97 To Be Furnished and Installed By The City of Wichita Water Dept
 W.L. Sta. 27+04.74, Line 1 = B.L. 1 Sta. 32+10.68, 27.00' Rt. Install 1-8" 45° CIMJ Bend (Up)
 W.L. Sta. 27+03.45, Line 1 = B.L. 1 Sta. 32+09.39, 27.00' Rt. Install 1-8" 45° CIMJ Bend (Dn)
 Install 1-6" MJ Cap
 Remove & Salvage Ex. Fire Hydrant & Valve Box. Deliver to City of Wichita Install 1-6" MJ Cap On FH Branch
 Install 7.45 L.F. 8" DICI Pipe
 CAUTION Existing 6" Water Crossing
 Install 1.82 L.F. 8" DICI Pipe
 B.L. 1 Sta. 32+30.06, 30.14 Lt. THIMBLE @ Center Line 20th Street Looking West
 W.L. Sta. 27+04.74, Line 1 = B.L. 1 Sta. 32+10.68, 27.00' Rt. Install 1-8" 45° CIMJ Bend (Up)
 Proposed Drilling Area
 Remove & Replace In Kind Pavement, Curb & Gutter As Necessary For Water Main Const.
 Install 7.01 L.F. 8" DICI Pipe
 B.L. 1 Sta. 32+27.94, 30.04 Rt. THIMBLE @ Center Line 20th Street Looking East
 W.L. Sta. 27+11.75, End Line 1 = B.L. 1 Sta. 32+17.68, 27.00' Rt. Tap Existing 16" Water Line 1-16" x 8" Tapping Sleeve (S) 1-8" Tapping Valve w/Valve Box Valve Box Elev. = 1308.97 To Be Furnished and Installed By The City of Wichita Water Dept



Drawing File: \\C:\Users\jfb\Documents\Arkansas Ave Water Lines\Land\Draw\Base Wtr Line 1.dwg
 Project No. 0510E392 CAPITAL IMPROVEMENT PROJECT
ARKANSAS AVE. WATER MAIN REPLACEMENT
 Line 1, W.L. Sta. 22+44.05 to W.L. Sta. 27+11.75
 ARKANSAS AVE. SOUTH OF 16 TH TO NORTH OF 20 TH

Design: JFB
 Drawn: TCA
 Approved: JFB
 Scale: NOTED

Baughman Company, P.A.
 315 Ellis St. Wichita, KS 67211 P 316-262-7271 F 316-262-0149
 ENGINEERING | SURVEYING | PLANNING | LANDSCAPE ARCHITECTURE

March, 2006
 SHEET 11 OF 19