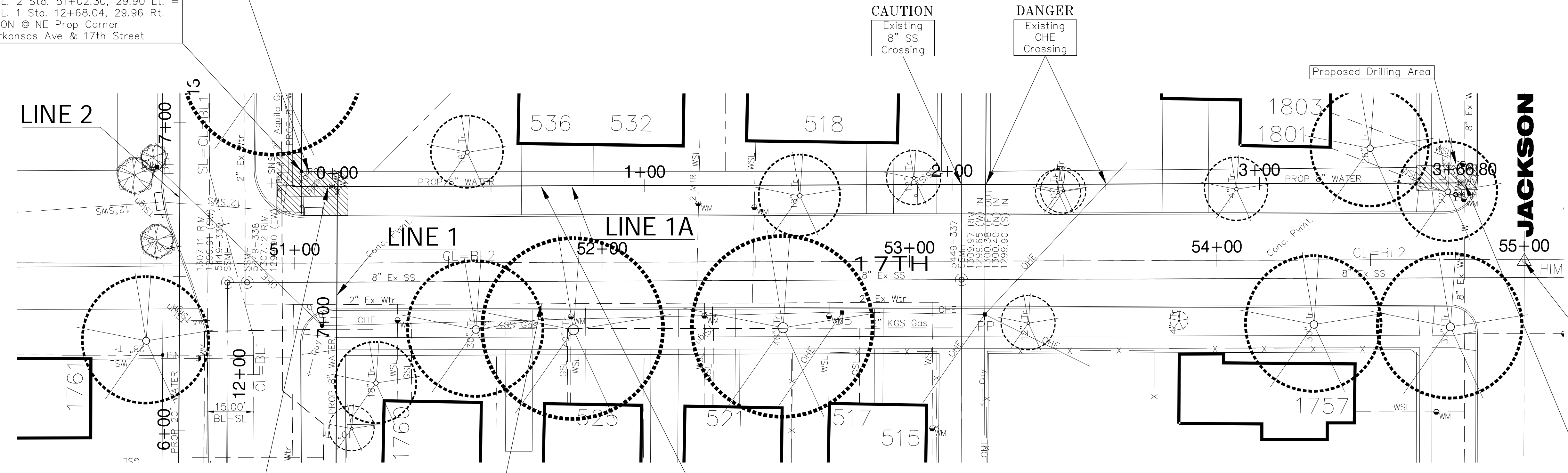
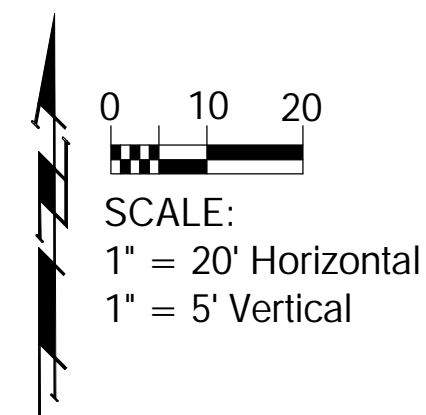


**Benchmark**

BM #2 -Brass Rod in Concrete Post in Water Meter Box Located at the NE Corner of the Intersection of 17th Street & Arkansas Ave. Elev. 1306.45

B.L. 2 Sta. 51+02.30, 29.90 Lt. =  
B.L. 1 Sta. 12+68.04, 29.96 Rt.  
IRON @ NE Prop Corner  
Arkansas Ave & 17th Street

Note:  
See Water Meter  
Table For Service  
Locations.



W.L. Sta. 0+00.00, Line 1A =  
W.L. Sta. 7+42.72, Line 1 =  
B.L. 1A Sta. 51+13.74, 24.90' Rt.  
Connect to Tee on Line 1 (E)  
Extend 8" Water Line East

Abandon Existing 2" Water Line in  
Place in Accordance with City of  
Wichita Specs. Seal Both Ends.  
All Services Must Be Connected To  
New Main Prior to Abandonment.

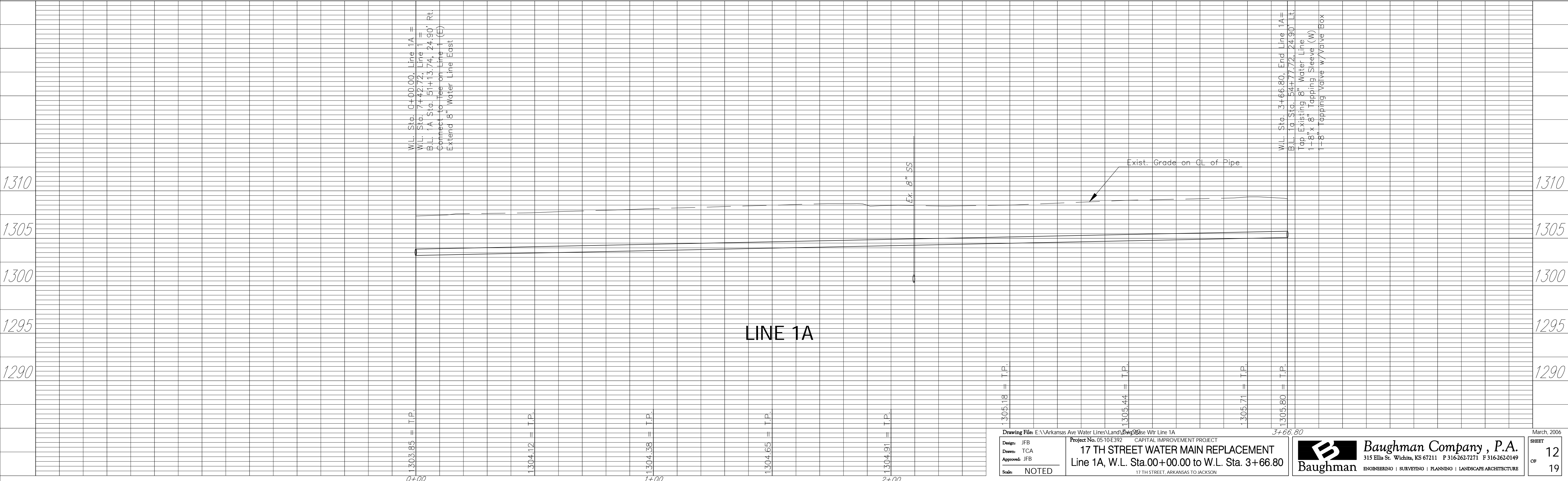
Install 366.80 L.F. 8" Pipe

Remove & Replace In Kind  
Sidewalk As Necessary  
For Water Main Construction.

Trees and shrubs which are not in direct  
conflict with Water Main Construction shall  
be saved and protected from damage.  
Trim trees and shrubs as necessary.

B.L. 2 Sta. 55+00.00, 0.64 Rt.  
THIMBLE @ Center Line  
17th Street & Jackson Street

W.L. Sta. 3+66.80, End Line 1A=  
B.L. 1a Sta. 54+77.72, 24.90' Lt.  
Tap Existing 8" Water Line  
1-8" x 8" Tapping Sleeve (W)  
1-8" Tapping Valve w/Valve Box  
Elev. = xxx.xx  
To Be Furnished and Installed  
By The City of Wichita Water Dept



17 TH STREET WATER MAIN REPLACEMENT  
Line 1A, W.L. Sta. 0+00.00 to W.L. Sta. 3+66.80

**Baughman Company, P.A.**  
315 Ellis St. Wichita, KS 67211 P 316-262-7271 F 316-262-0149  
ENGINEERING | SURVEYING | PLANNING | LANDSCAPE ARCHITECTURE

March, 2006  
SHEET 12 OF 19