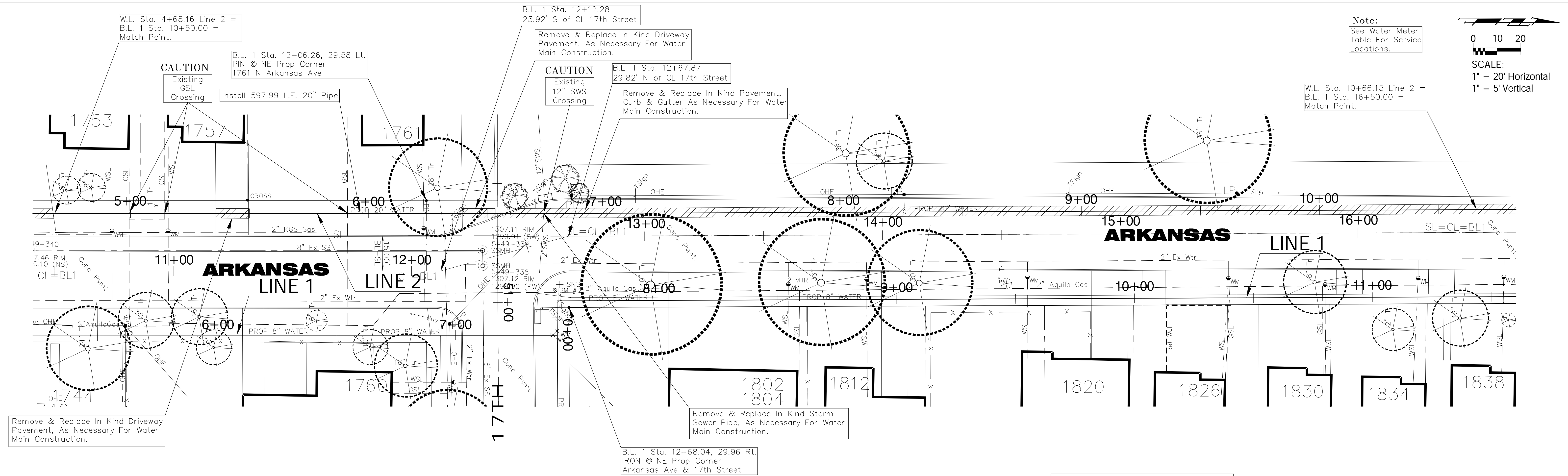
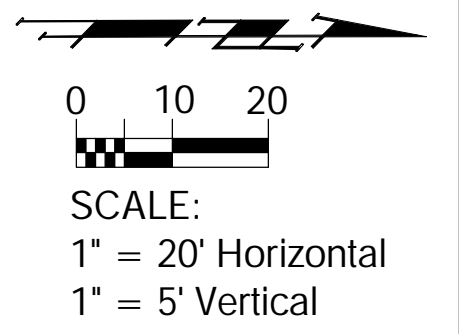


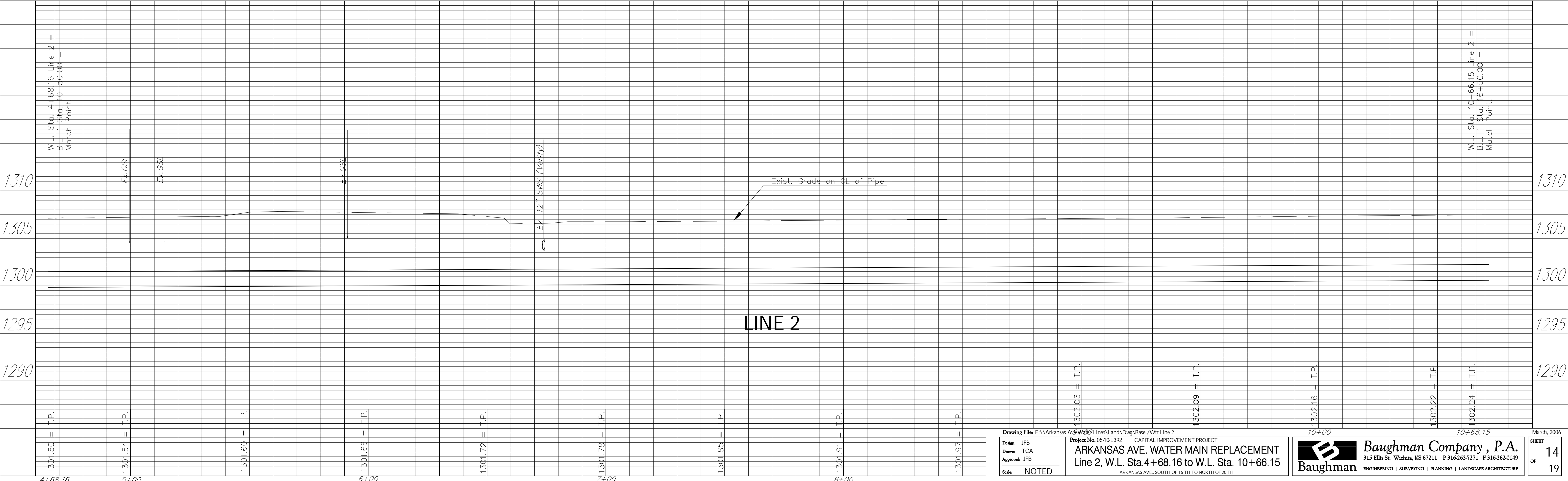
Note:
See Water Meter Table For Service Locations.



Trees and shrubs which are not in direct conflict with Water Main Construction shall be saved and protected from damage. Trim trees and shrubs as necessary.

Benchmark

BM #2 - Brass Rod in Concrete Post in Water Meter Box Located at the NE Corner of the Intersection of 17th Street & Arkansas Ave. Elev. 1306.45



Drawing File: E:\Arkansas Ave\Water\Lines\Land\Draw\Wtr Line 2
 Design: JFB
 Drawn: TCA
 Approved: JFB
 Scale: NOTED
 Project No. 0510E392 CAPITAL IMPROVEMENT PROJECT
ARKANSAS AVE. WATER MAIN REPLACEMENT
 Line 2, W.L. Sta. 4+68.16 to W.L. Sta. 10+66.15
 ARKANSAS AVE. SOUTH OF 16 TH TO NORTH OF 20 TH

Baughman Company, P.A.
 315 Ellis St. Wichita, KS 67211 P 316-262-7271 F 316-262-0149
 ENGINEERING | SURVEYING | PLANNING | LANDSCAPE ARCHITECTURE

March, 2006
 SHEET
 OF 19