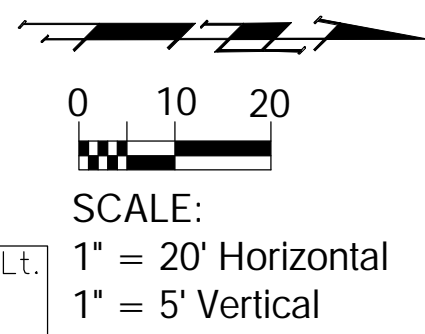


Note:

See Water Meter Table For Service Locations.



W.L. Sta. 21+66.31 Line 2 =
B.L. 1 Sta. 27+50.00 =
Match Point.

Install 422.35 L.F. 20" Pipe

W.L. Sta. 26+34.37, End Line 2 =
B.L. 1 Sta. 32+17.68, 13.00' Lt.
Deflect Pipe 3'5.3'21" E&DN
Remove 1-20" x 20" CIMJ Tee
Install 1-16" x 20" CIMJ Cross
Install 1-20" Valve Assy. (BFV)(S)
Valve Box Elev. = 1309.14

B.L. 1 Sta. 32+30.06, 30.14 Lt.
THIMBLE @ Center Line
20th Street Looking West

B.L. 1 Sta. 32+27.94, 30.04 Rt.
THIMBLE @ Center Line
20th Street Looking East

CAUTION
Existing
4" Aquila Gas
Crossing

CAUTION
Existing
Ex UGTraff
Crossing

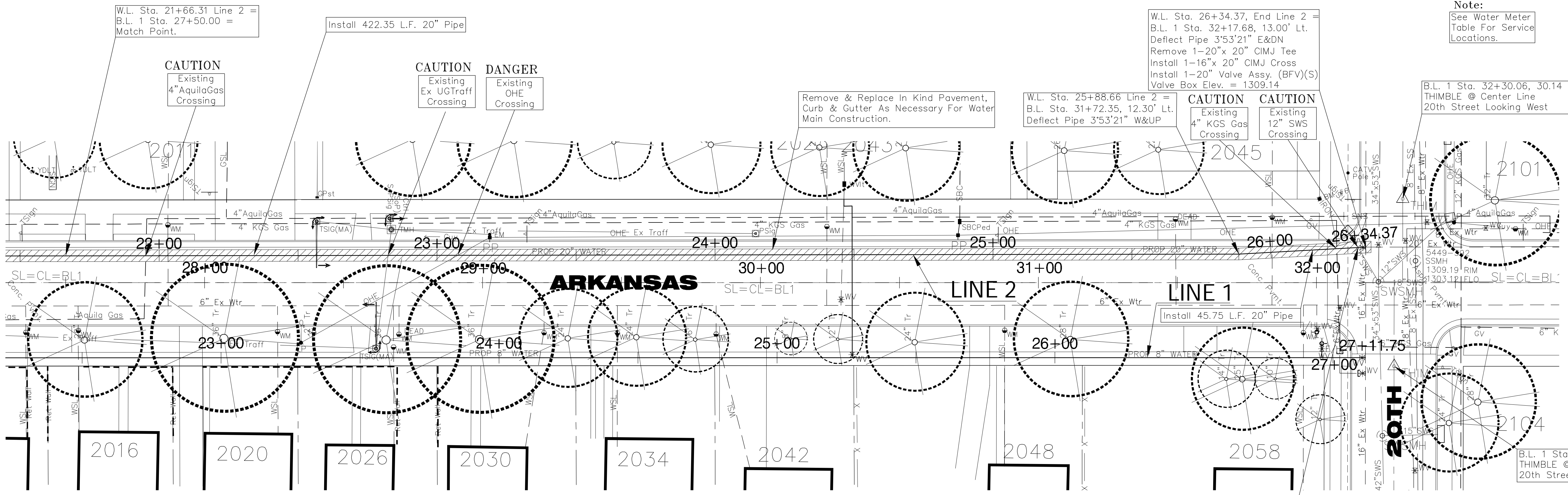
DANGER
Existing
OHE
Crossing

Remove & Replace In Kind Pavement,
Curb & Gutter As Necessary For Water
Main Construction.

W.L. Sta. 25+88.66 Line 2 =
B.L. Sta. 31+72.35, 12.30' Lt.
Deflect Pipe 3'5.3'21" W&UP

CAUTION
Existing
4" KGS Gas
Crossing

CAUTION
Existing
12" SWS
Crossing

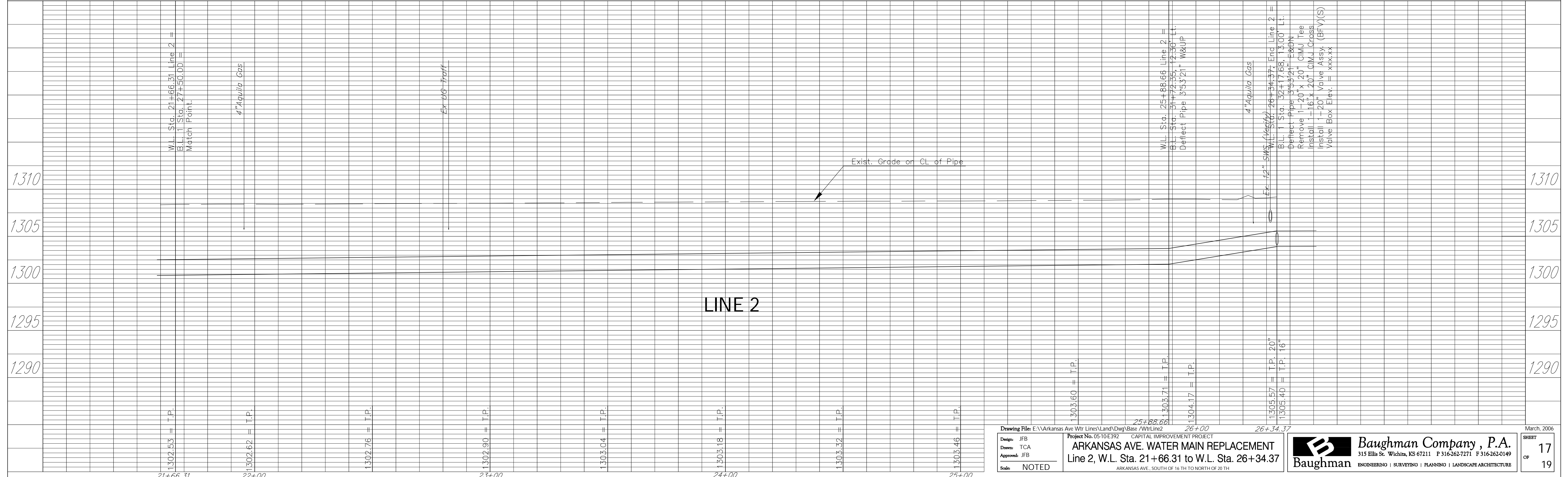


Trees and shrubs which are not in direct
conflict with Water Main Construction
shall be saved and protected from damage.
Trim trees and shrubs as necessary.

Remove & Replace In Kind Storm
Sewer Pipe, As Necessary For Water
Main Construction.

Benchmark

BM #6 - "1" Back of walk Located at the SW Corner of the Intersection of 20th Street
& Arkansas Ave. Elev. 1309.76



Design: JFB
Drawn: TCA
Approved: JFB
Scale: NOTED

Project No. 0510E392 CAPITAL IMPROVEMENT PROJECT
ARKANSAS AVE. WATER MAIN REPLACEMENT
Line 2, W.L. Sta. 21+66.31 to W.L. Sta. 26+34.37
ARKANSAS AVE., SOUTH OF 16 TH TO NORTH OF 20 TH

Baughman Company, P.A.
315 Ellis St. Wichita, KS 67211 P 316-262-1271 F 316-262-0149
ENGINEERING | SURVEYING | PLANNING | LANDSCAPE ARCHITECTURE

March, 2006
SHEET 17
OF 19