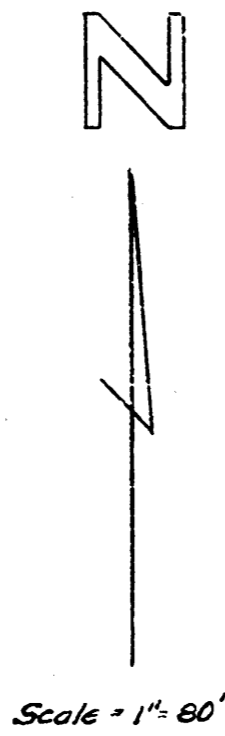
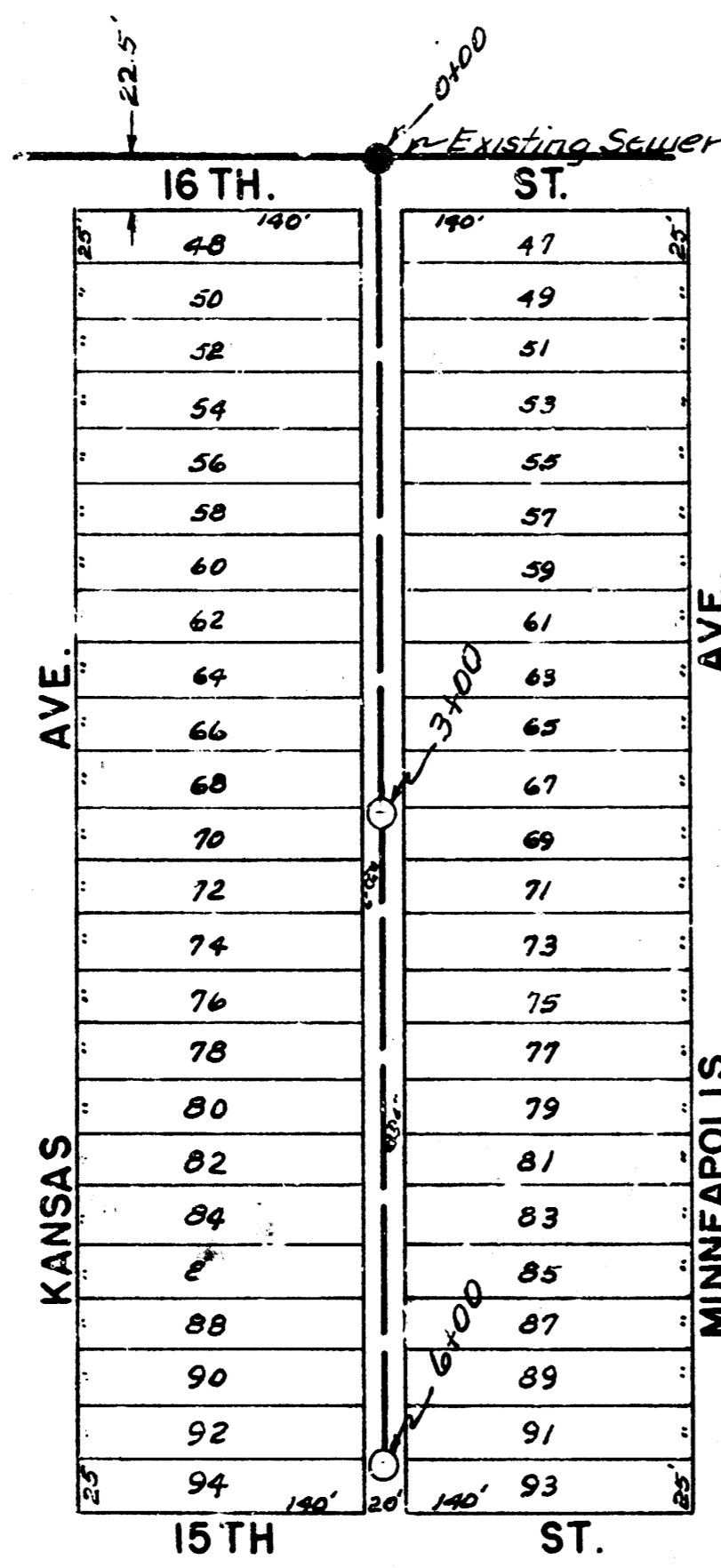
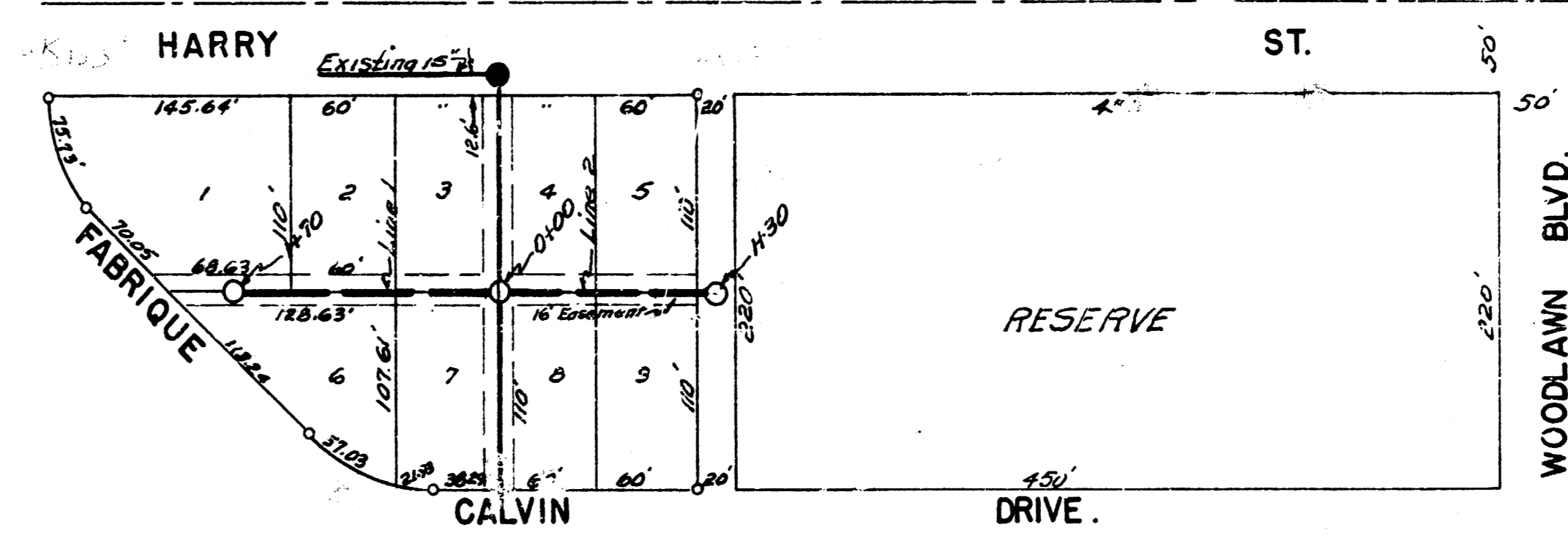


BLOCK 6 KANSAS ADDITION



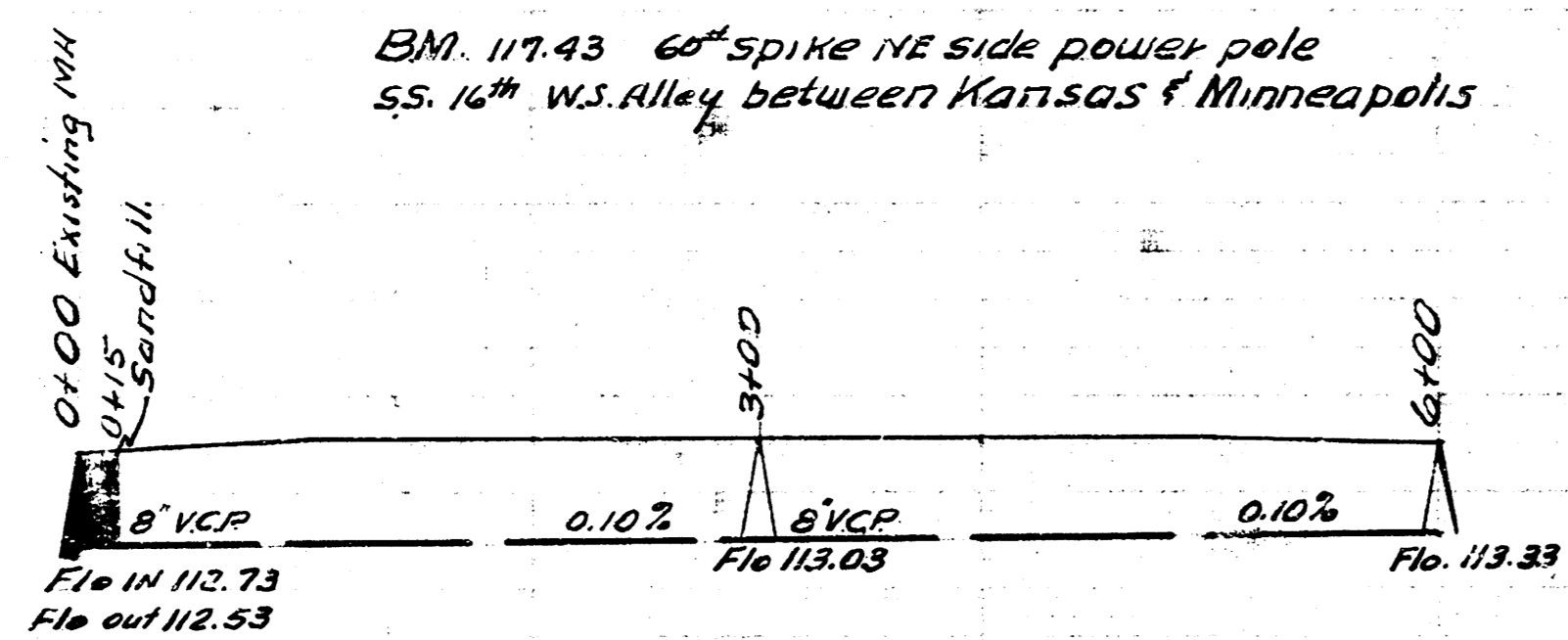
Scale = 1" = 60'

BLK. 4 PURCELLS. 8TH.



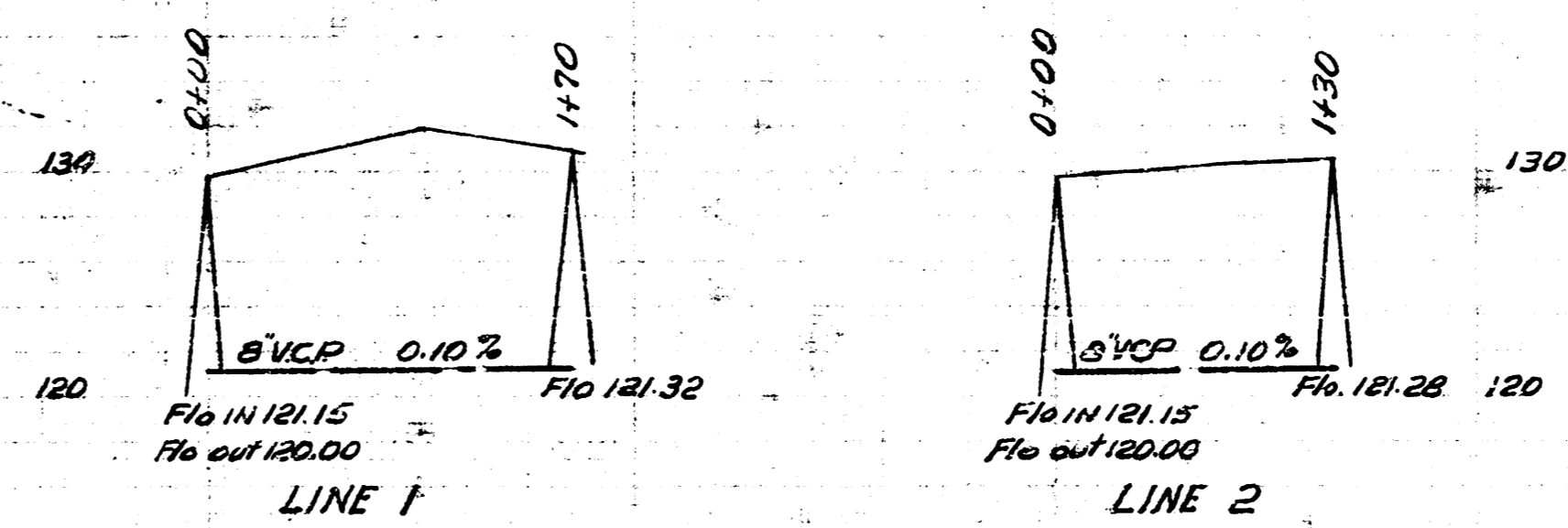
Scale = 1" = 60'

8-2-52
 Drawn by
 L. McClain
 Checked by
 Block 16
 M-10



BM. 117.43 60" spike NE side power pole
 ss. 16" w.s. Alley between Kansas & Minneapolis

7-21-52
 Drawn by
 L. McClain
 Checked by
 Block 16
 M-9



BM. 133.92 SW cor. s.d. hub guard conc. box culvert
 Fabrique & Harry.

LAT 9 SUB Y SS.12
 CITY OF WICHITA KANSAS
 L.H. WHITE CITY ENGINEER
 Proj No. C-22-67



LAT 7 SUB 2 W15.
 CITY OF WICHITA KANSAS
 L.H. WHITE CITY ENGINEER
 Proj No. C-22-56

