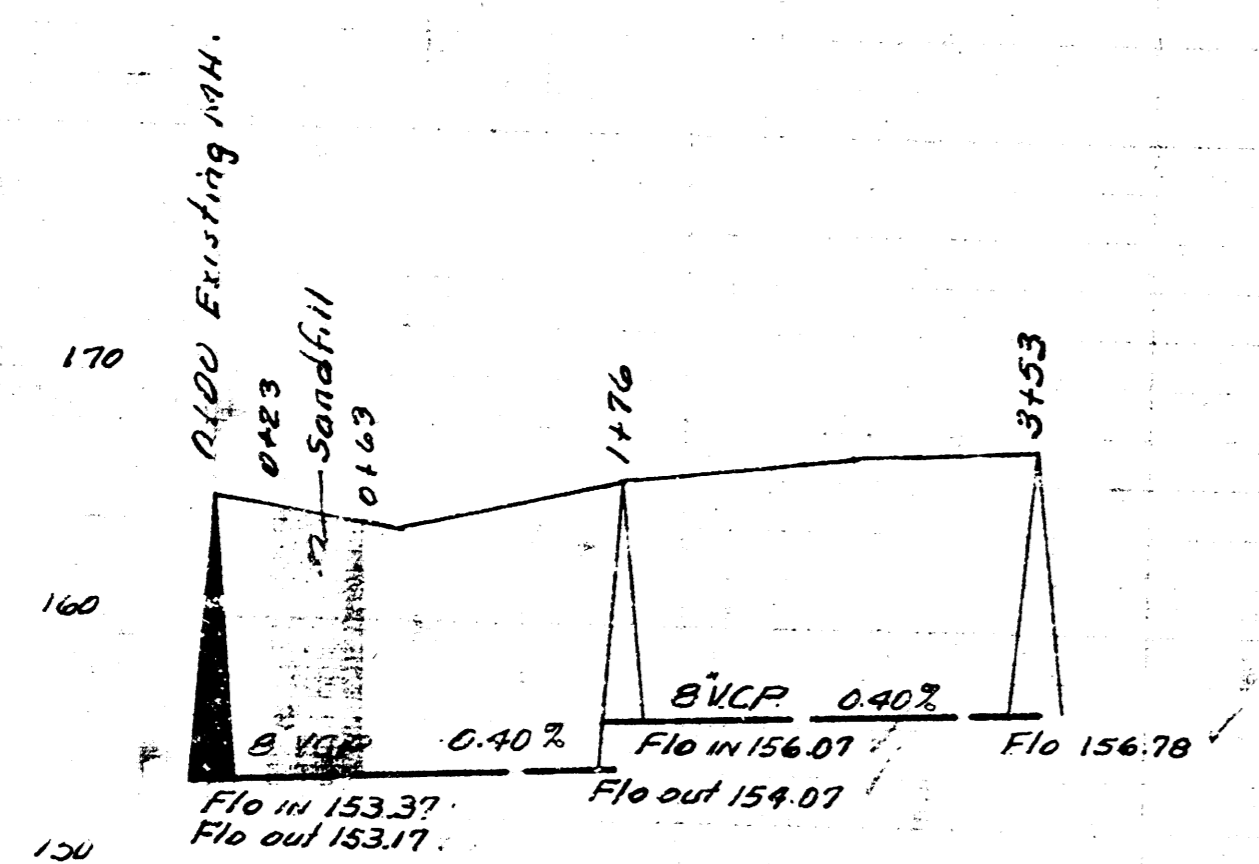
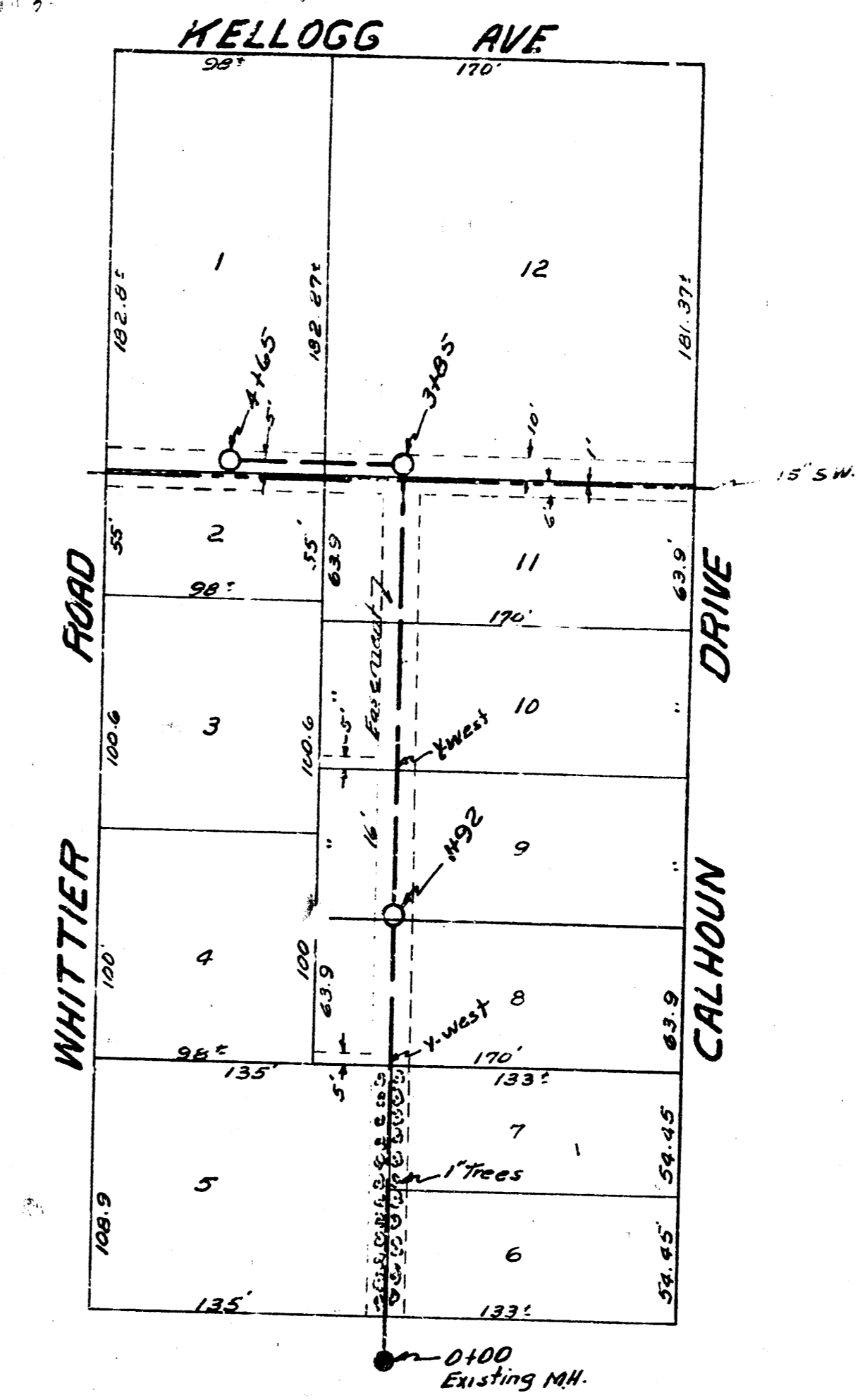
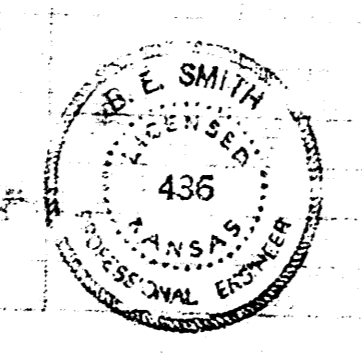


BM. 167.26 "M" in Mueller F.P. NW Cor Lightner & Orme.

Date  
Drawn by  
Checked by  
1-2-53  
McClain  
85-Y

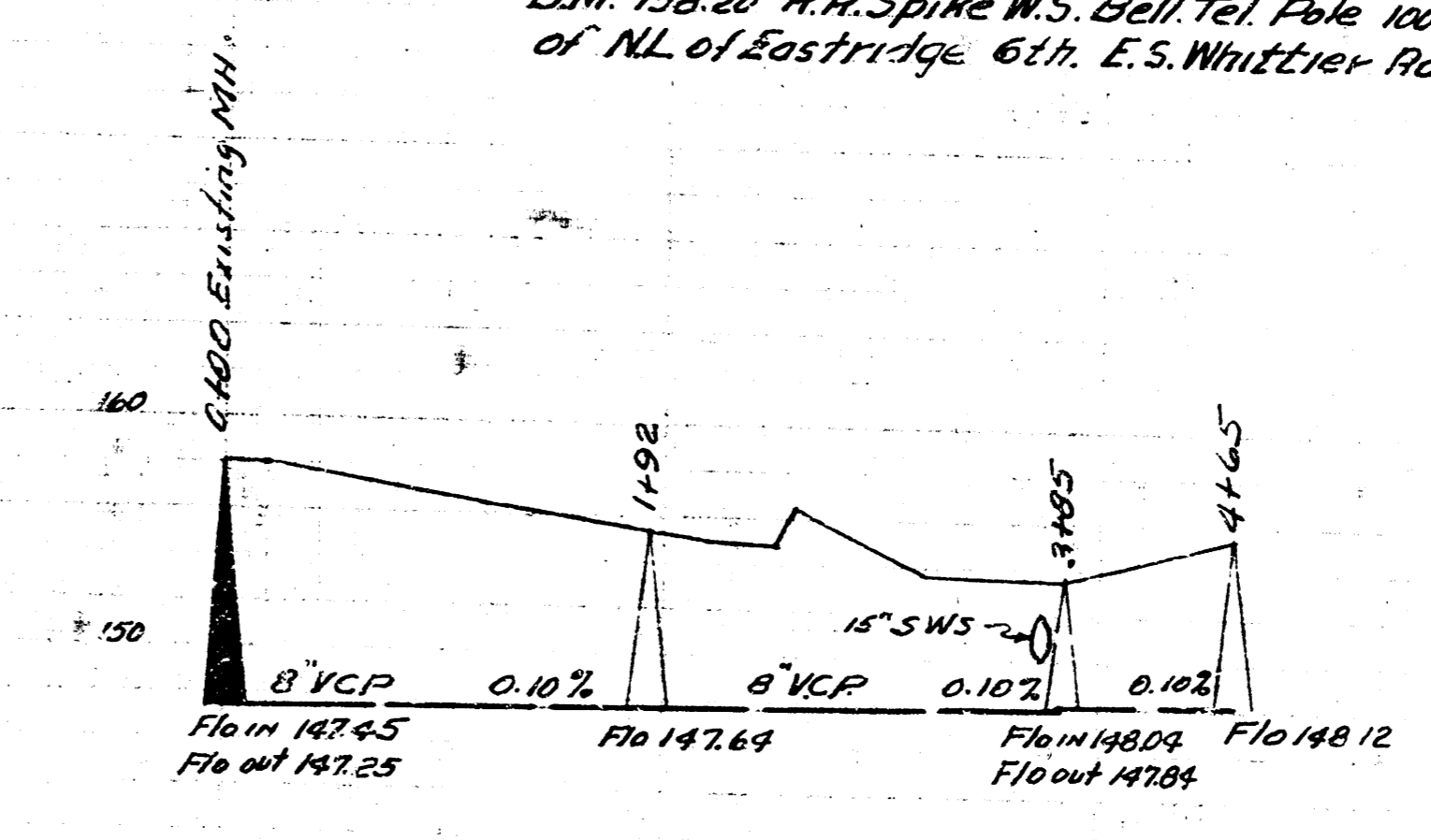


LAT. 11 SUB. 3 W15  
CITY OF WICHITA KANSAS  
L.K. WHITE CITY ENGINEER  
Proj. No. C-22-53



BM. 158.20 R.R. Spike W.S. Bell Tel. Pole 100' North of N.L. of Eastridge 6th. E.S. Whittier Rd.

Date  
Drawn by  
Checked by  
1-2-53  
McClain  
85-Y



LAT. 3 SUB. 5 W15  
CITY OF WICHITA KANSAS  
L.K. WHITE CITY ENGINEER  
Proj. No. C-22-53

