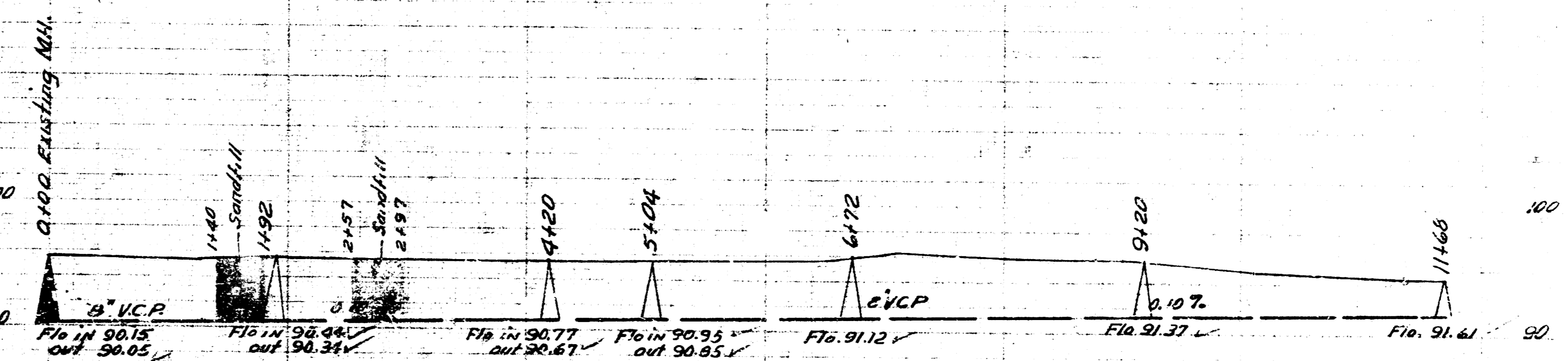
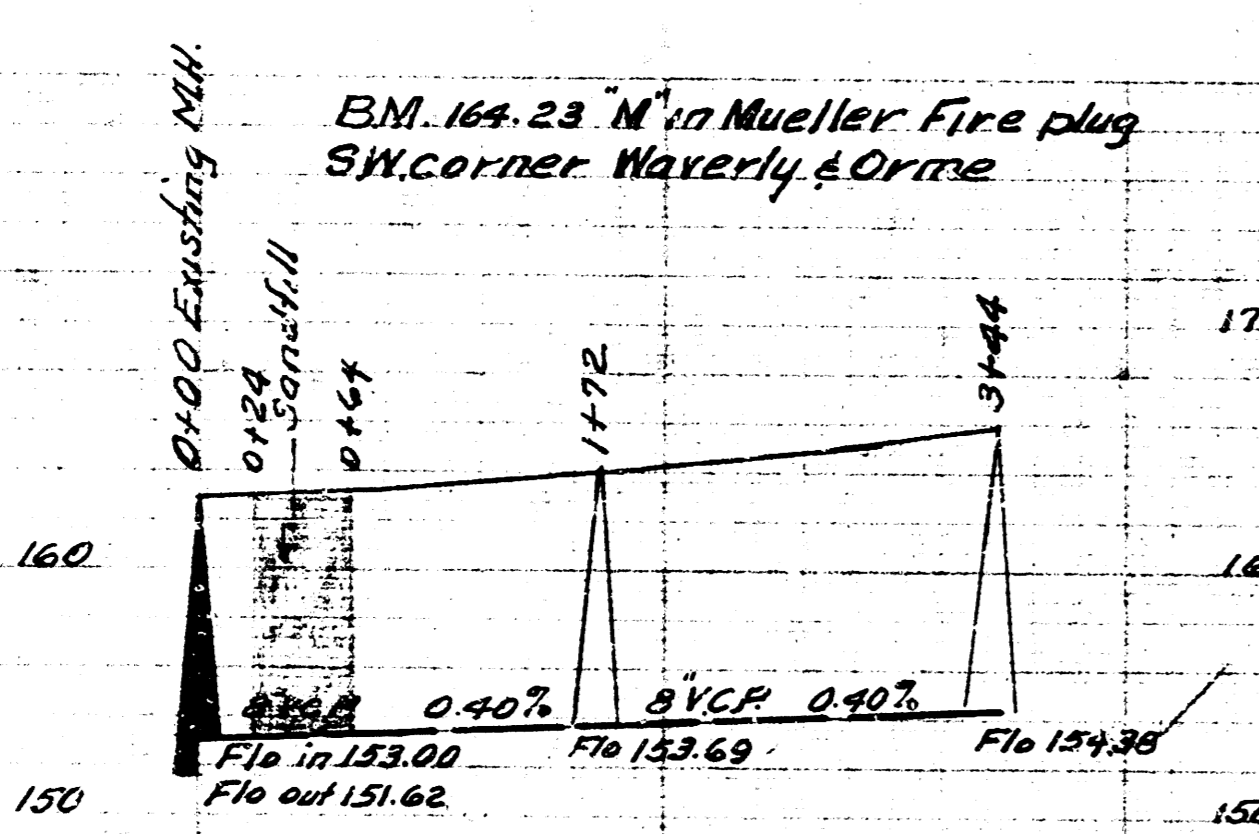
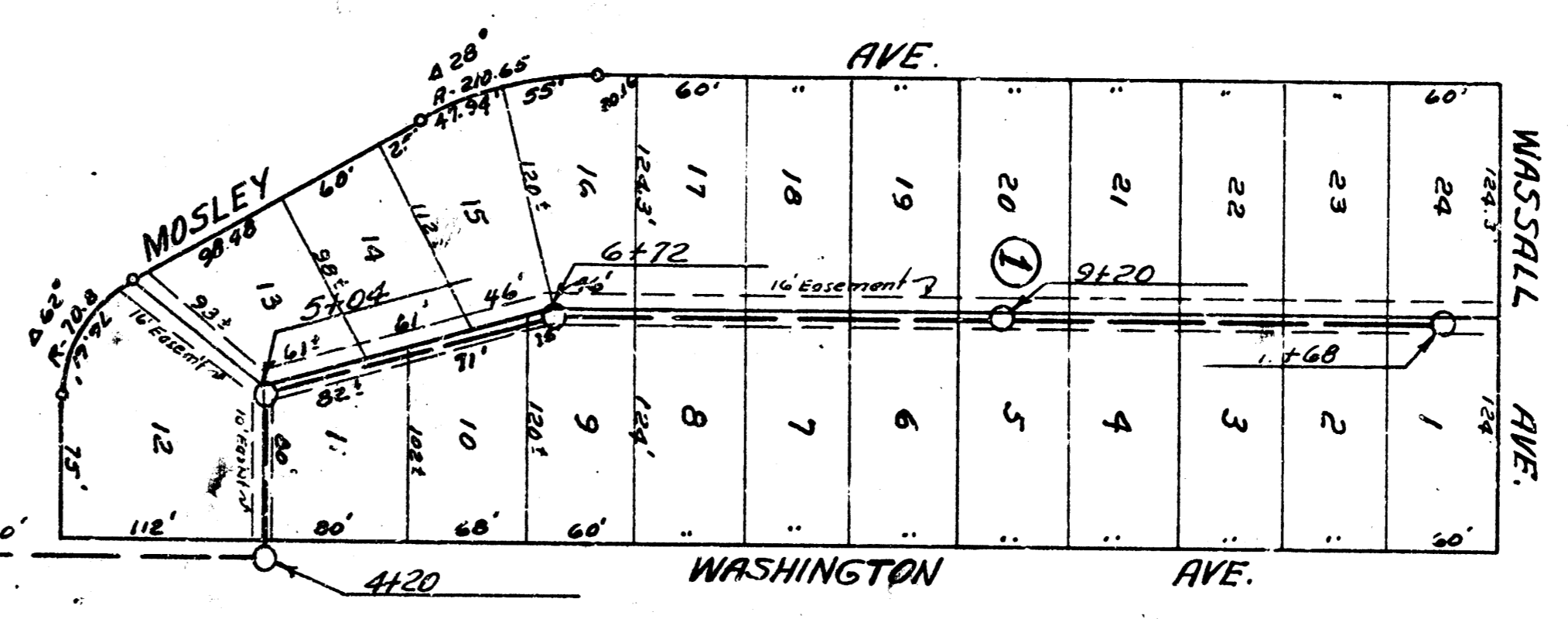


Note: An 8" VCP has been laid across Washington. Engineer to check all flow lines before setting grades.



Date 3-18-53
 Drawn by L. McClain
 Checked by [Signature]
 Sheet No. 92-Y

Date 3-17-53
 Drawn by L. McClain
 Checked by [Signature]
 Sheet No. 92-Y

LAT. 12, SUB. 3, W15
 CITY OF WICHITA, KANSAS
 G.E. SMITH, CITY ENGINEER
 Proj. No. C-23-15

LAT. 20, DIST. A 5.5.20
 CITY OF WICHITA, KANSAS
 G.E. SMITH, CITY ENGINEER
 Proj. No. C-23-16



Note: All lines with less than 36" of cover shall be encased.