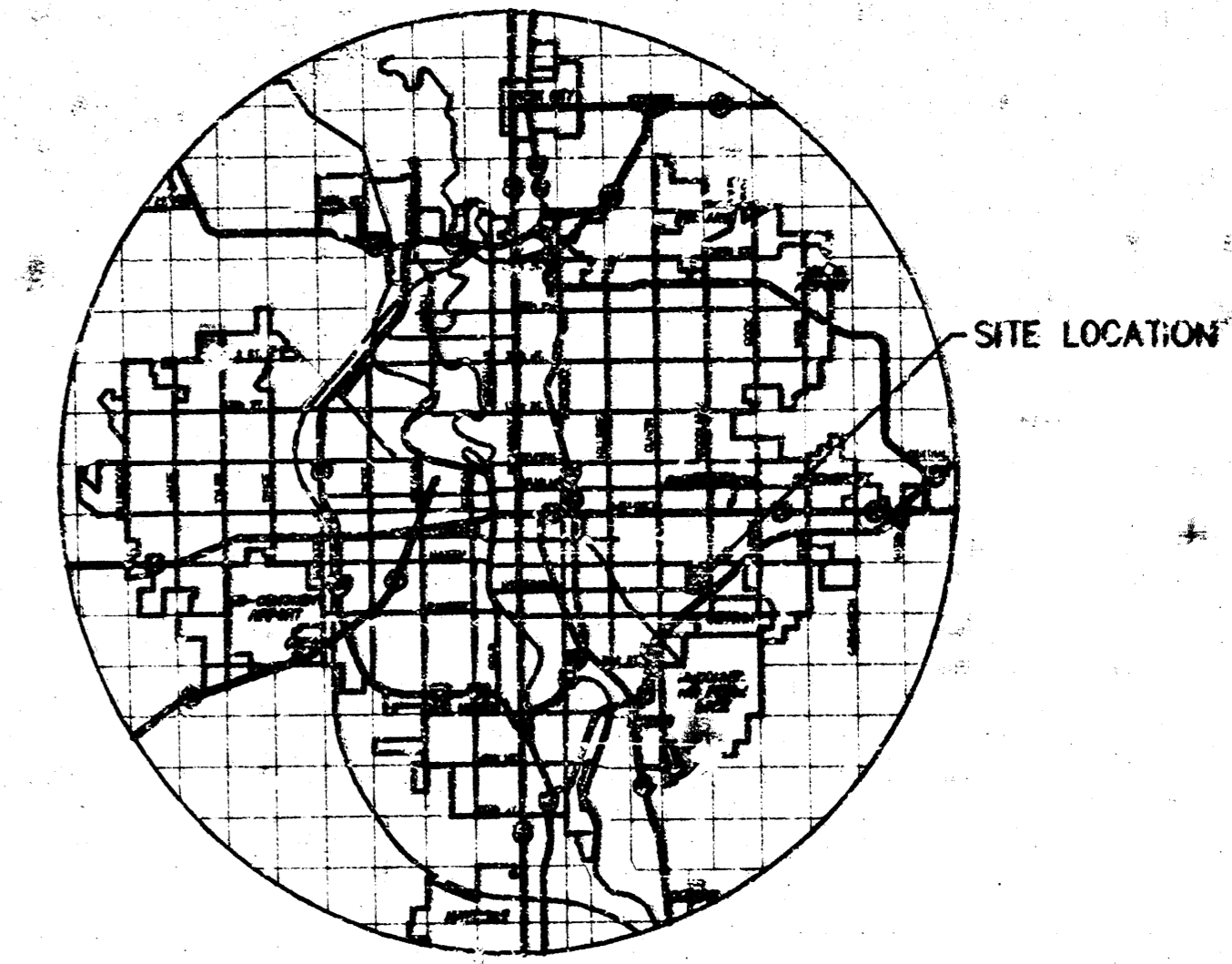


SANITARY SEWER PLANS FABRIQUE STREET MAIN 3, WIS PROJECT NO. 468-82785 INDEX CODE 623314

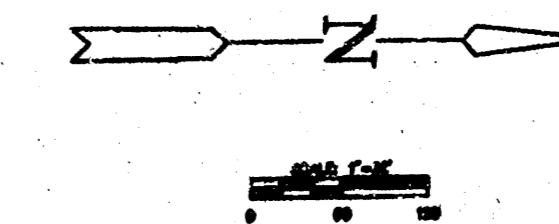
CITY OF WICHITA, KANSAS
MICHAEL E. LINDEBAK, CITY ENGINEER



LOCATION MAP

INDEX TO DRAWINGS

SHEET NO.	DESCRIPTION
1	TITLE SHEET
2	MANHOLE DETAILS
3	MISC. DETAILS
4	LINE 1 & 2
5	FINAL PLAN



GENERAL NOTES

- THE CONTRACTOR SHALL BE RESPONSIBLE FOR PRESERVING PROPERTY IRONS. THE CONTRACTOR SHALL RE-ESTABLISH ANY PROPERTY IRONS WHICH ARE DAMAGED OR DESTROYED BY HIS CONSTRUCTION OPERATIONS. SUCH IRONS SHALL BE RE-ESTABLISHED BY A LICENSED LAND SURVEYOR IN ACCORDANCE WITH STATE LAWS.
- EXISTING UTILITIES AND THEIR LOCATIONS AS SHOWN ON THE PLANS REPRESENT THE BEST INFORMATION OBTAINABLE FOR DESIGN. LOCATION INFORMATION HAS BEEN OBTAINED FROM THE VARIOUS UTILITY COMPANIES AND IS EITHER FROM COMPANY RECORD DRAWINGS OR COMPANY PROVIDED FIELD LOCATIONS. THE PLAN LOCATIONS SHOWN ARE NOT GUARANTEED. ADDITIONAL EXISTING UTILITIES MAY ALSO BE ENCOUNTERED.
- CONTRACTOR SHALL PROVIDE A MINIMUM ADVANCE NOTICE OF FORTY-EIGHT (48) HOURS TO UTILITY COMPANIES PRIOR TO STARTING ANY EXCAVATION AS FOLLOWS:

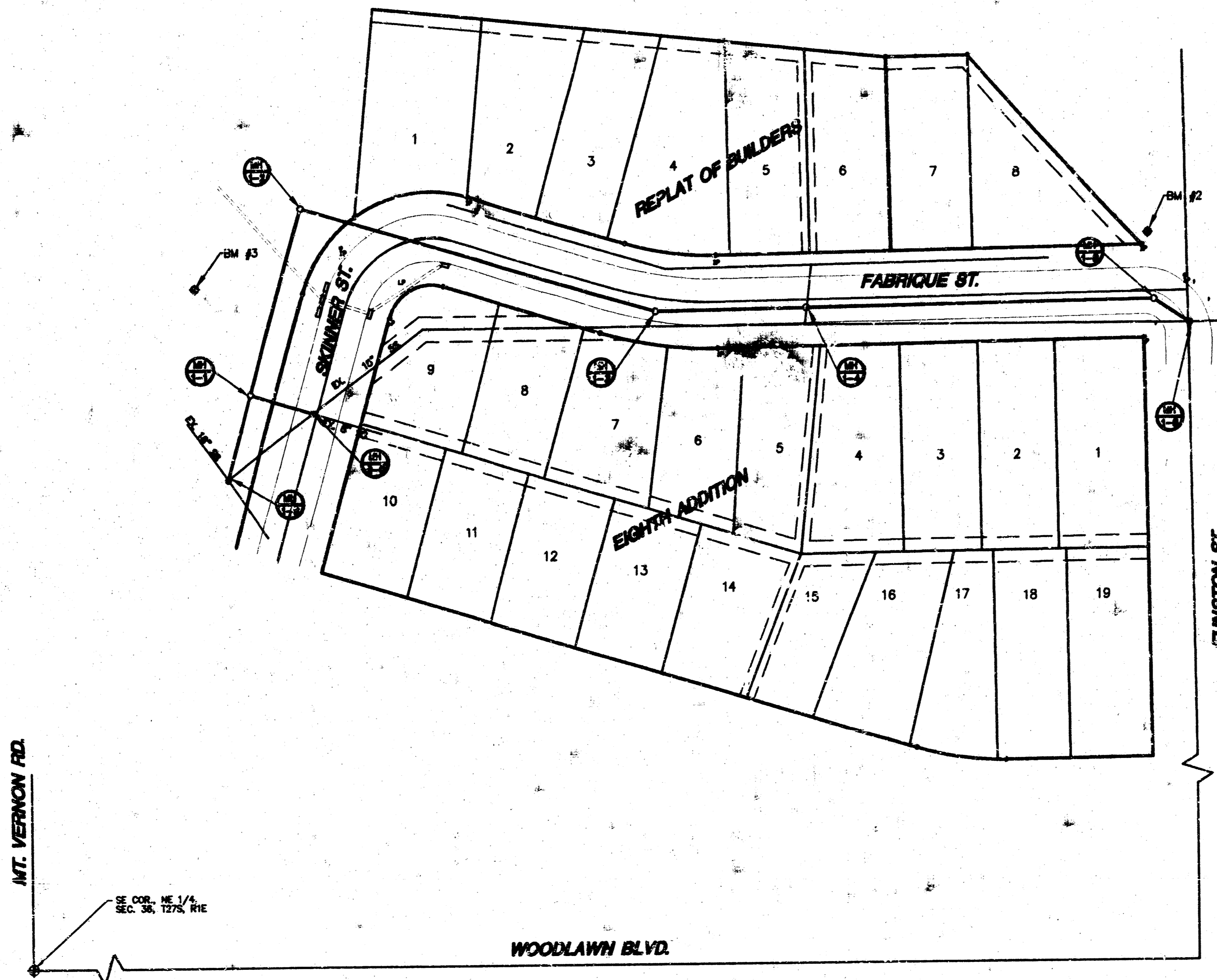
KANSAS ONE-CALL 1-800-344-7233
or 687-2470 (LOCAL WICHITA)

THE CONTRACTOR MUST NOTIFY THE FOLLOWING IN CASE OF AN EMERGENCY:

SOUTHWESTERN BELL TELEPHONE COMPANY 1-800-734-7630
CABLEVISION 262-0661
K.G.E. (GAS & ELECTRIC) 383-8600
CITY OF WICHITA WATER & SEWER MAINTENANCE 268-4908

IF THE CONTRACTOR DAMAGES EITHER GAS OR ELECTRIC LINES, HE SHALL IMMEDIATELY INFORM EMERGENCY PERSONNEL THROUGH 911.

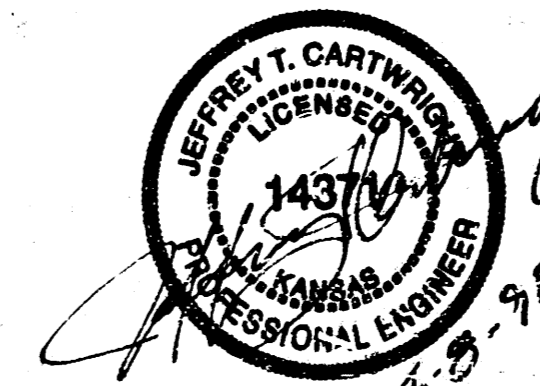
- RUBBLE FROM THE REMOVAL OF MISCELLANEOUS STRUCTURES AND EXCESS EXCAVATION WHICH IS TO BE WASTED SHALL BE DISPOSED OF ON SITES TO BE PROVIDED BY THE CONTRACTOR. THESE SITES SHALL BE APPROVED BY THE ENGINEER AS TO SUITABILITY, APPEARANCE AND SITE LOCATION. LOCATIONS THAT, IN THE OPINION OF THE ENGINEER, WILL LEAD TO AN UNSIGHTLY APPEARANCE WILL NOT BE APPROVED. ALL DISPOSAL SITES MUST BE APPROVED BY THE KANSAS DEPARTMENT OF HEALTH AND ENVIRONMENT. MATERIAL EITHER STOCKPILED OR DISPOSED OF IN A FLOOD PLAIN WILL REQUIRE A KANSAS STATE BOARD OF AGRICULTURE PERMIT. ANY MATERIAL DUMPED IN WATERS OF THE UNITED STATES OR WETLANDS IS SUBJECT TO U.S. CORPS OF ENGINEERS PERMITTING REGULATIONS. ANY MATERIAL BURIED OR STOCKPILED BEYOND APPROVED CONSTRUCTION LIMITS WILL REQUIRE ADDITIONAL ARCHAEOLOGICAL INVESTIGATIONS UNLESS BURIED IN A PREVIOUSLY APPROVED BORROW LOCATION.
- COST OF EXCAVATION, HAULING, AND DUMPING OF EXCESS EXCAVATION SHALL BE SUBSIDIARY TO THE PROJECT.
- PRIOR TO LAYING SEWER LINES USING EXISTING MANHOLES, THE CONTRACTOR SHALL EXPOSE AND VERIFY THE ELEVATION, GRADE AND ALIGNMENT OF EXISTING LINES AND NOTIFY THE ENGINEER OF ANY DEVIATION FROM THE PLAN. WHERE CONNECTION TO AN EXISTING MANHOLE THAT DOES NOT HAVE AN EXISTING STUB OR THE STUB IS UNUSABLE DUE TO ELEVATION GRADE OR ALIGNMENT, THE CONTRACTOR SHALL RESHAPE THE EXISTING MANHOLE INVERT TO PROVIDE SMOOTH FLOW. THE COST OF RESHAPING EXISTING MANHOLE INVERTS IS INCIDENTAL TO THE PROJECT.
- TREES AND SHRUBS IN PUBLIC RIGHT-OF-WAY WHICH ARE IN DIRECT CONFLICT WITH PROPOSED NEW CONSTRUCTION SHALL BE REMOVED BY THE CONTRACTOR WITH THE ENGINEER'S APPROVAL. TREES AND SHRUBS WHICH ARE NOT IN DIRECT CONFLICT WITH PROPOSED NEW CONSTRUCTION SHALL BE SAVED AND PROTECTED FROM DAMAGE.
- ALL DISTURBED AREAS SHALL BE SEEDED IN CONFORMANCE WITH CITY OF WICHITA SPECIFICATIONS. COST OF SEEDING SHALL BE CONSIDERED SUBSIDIARY TO THE COST OF SITE CLEARING AND RESTORATION.



BENCHMARKS

- BM #1 COW BM GYPSUM CREEK (FABRIQUE) AND HARRY - DISC ON WINGWALL NE COR. ELEV. = 132.68
- BM #2 " " CUT 3' E OF EAST END FOOTBRIDGE ON NORTH SIDE OF SIDEWALK ELEV. = 126.92
- BM #3 " " EAST SANITARY SEWER STRUCTURE NORTH SIDE CREEK 100' ± S 1850 S FABRIQUE ELEV. = 128.14

*Booked
Per Plan
P-52
12-4-98
R.P.L.*



**MAIN 3, WIS
FABRIQUE SANITARY SEWER**
PROJECT NAME

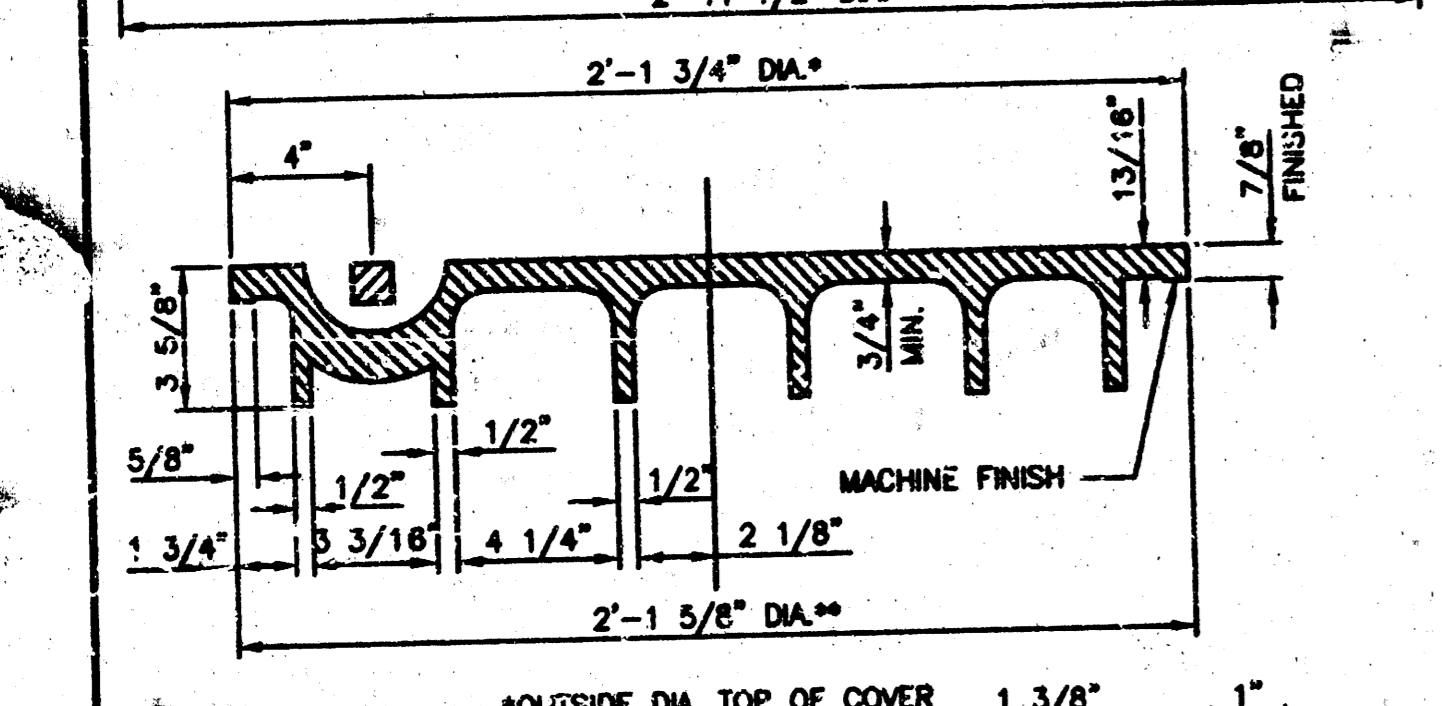
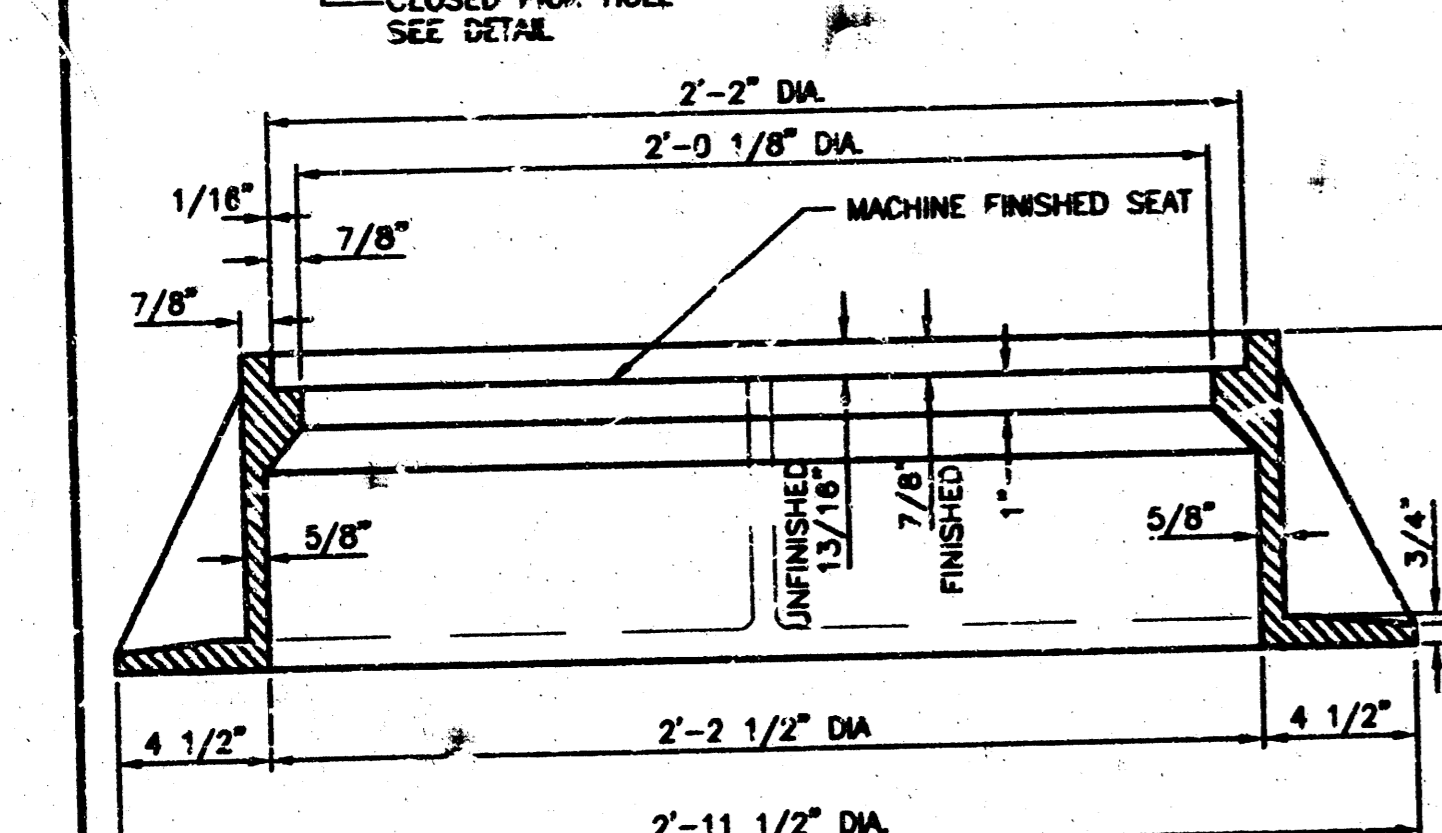
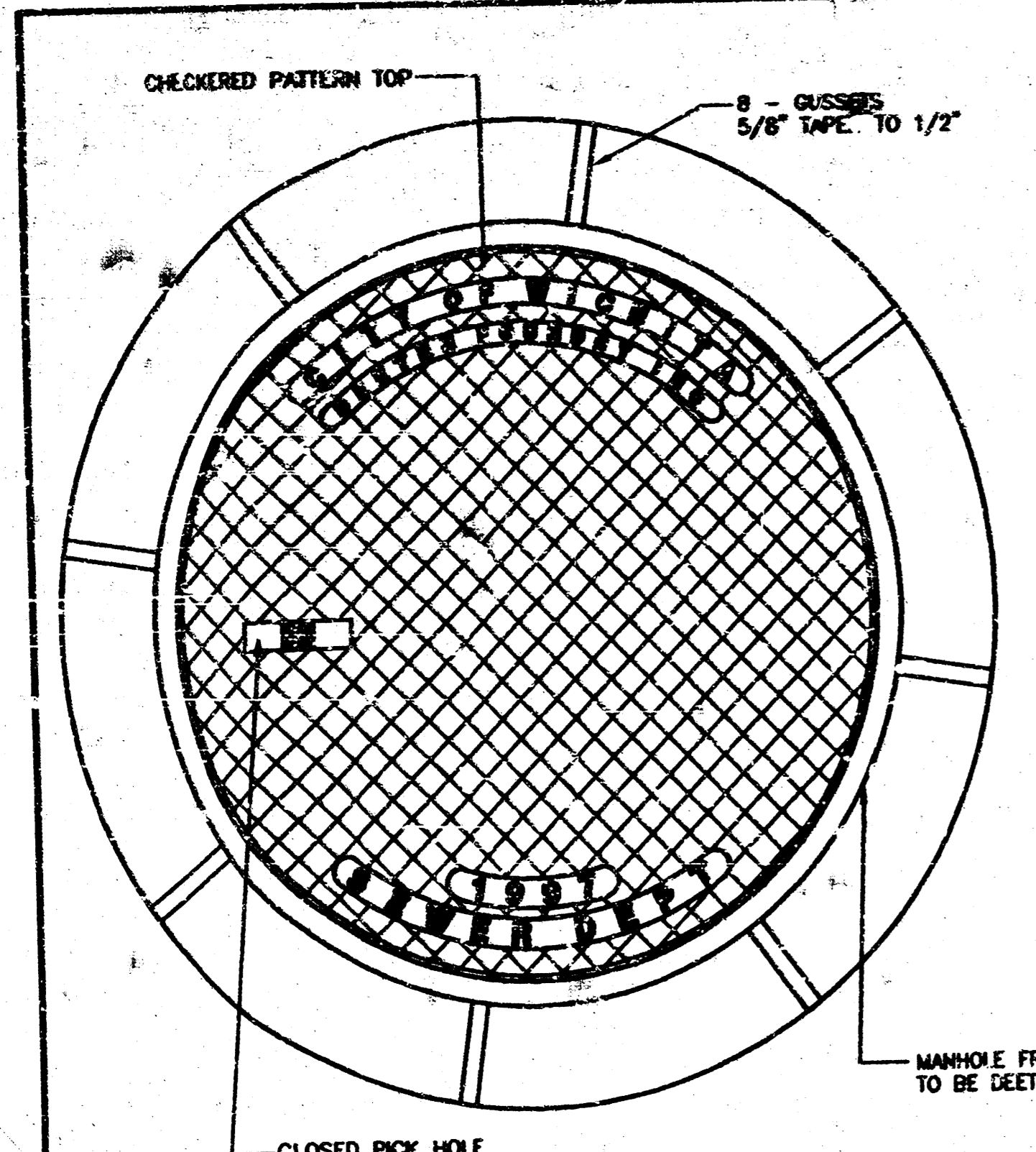
TITLE SHEET
SHEET TITLE

DESIGN BY: JTC	DRAWN BY: DAC	CHECKED BY: JTC
DATE: MARCH 1998	JOB NO.: 97135BT	SHEET NO.: 1 / 5

MID-KANSAS ENGINEERING CONSULTANTS, INC.
411 N. WEBB ROAD
WICHITA, KS. 67206
316-504-9400

SEWER APPURTENANCES DETAILS

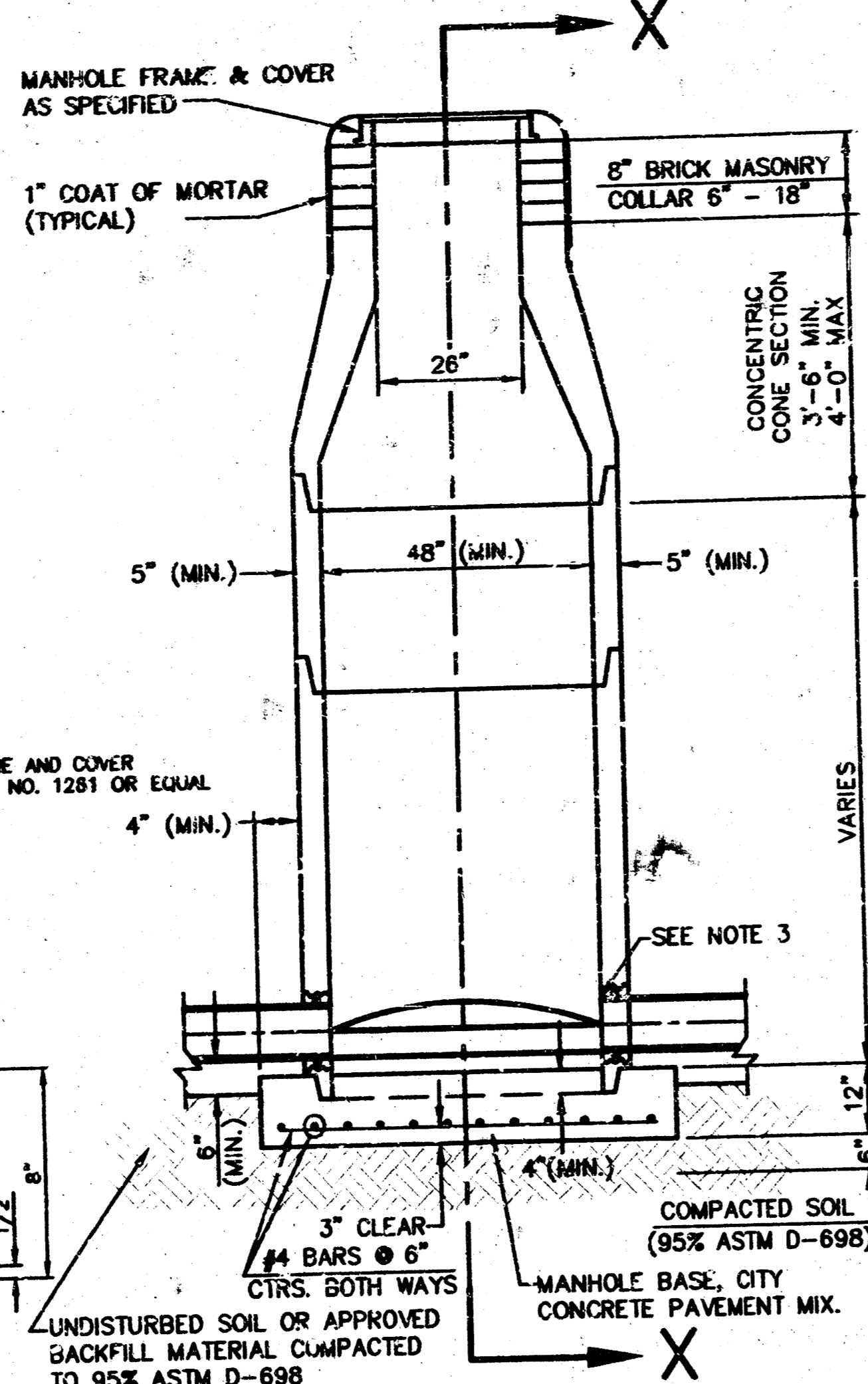
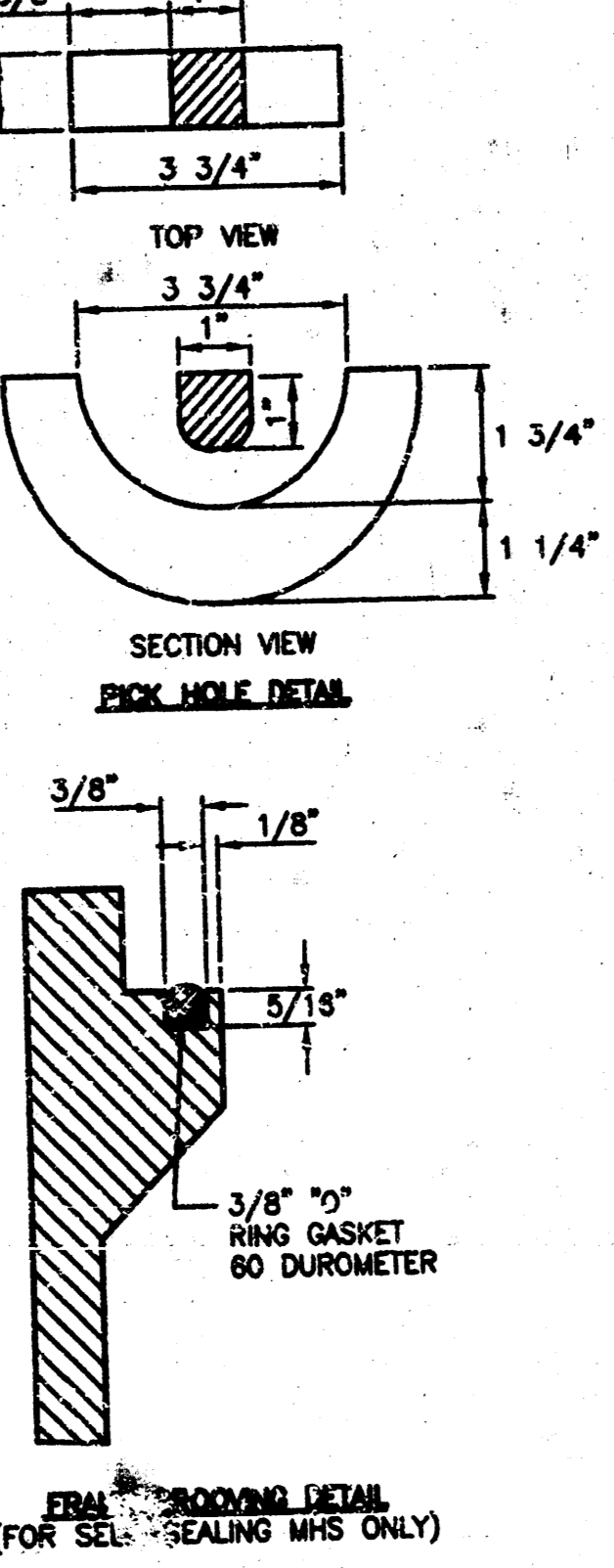
ADOPTED AS STANDARD DESIGN BY CITY OF WICHITA



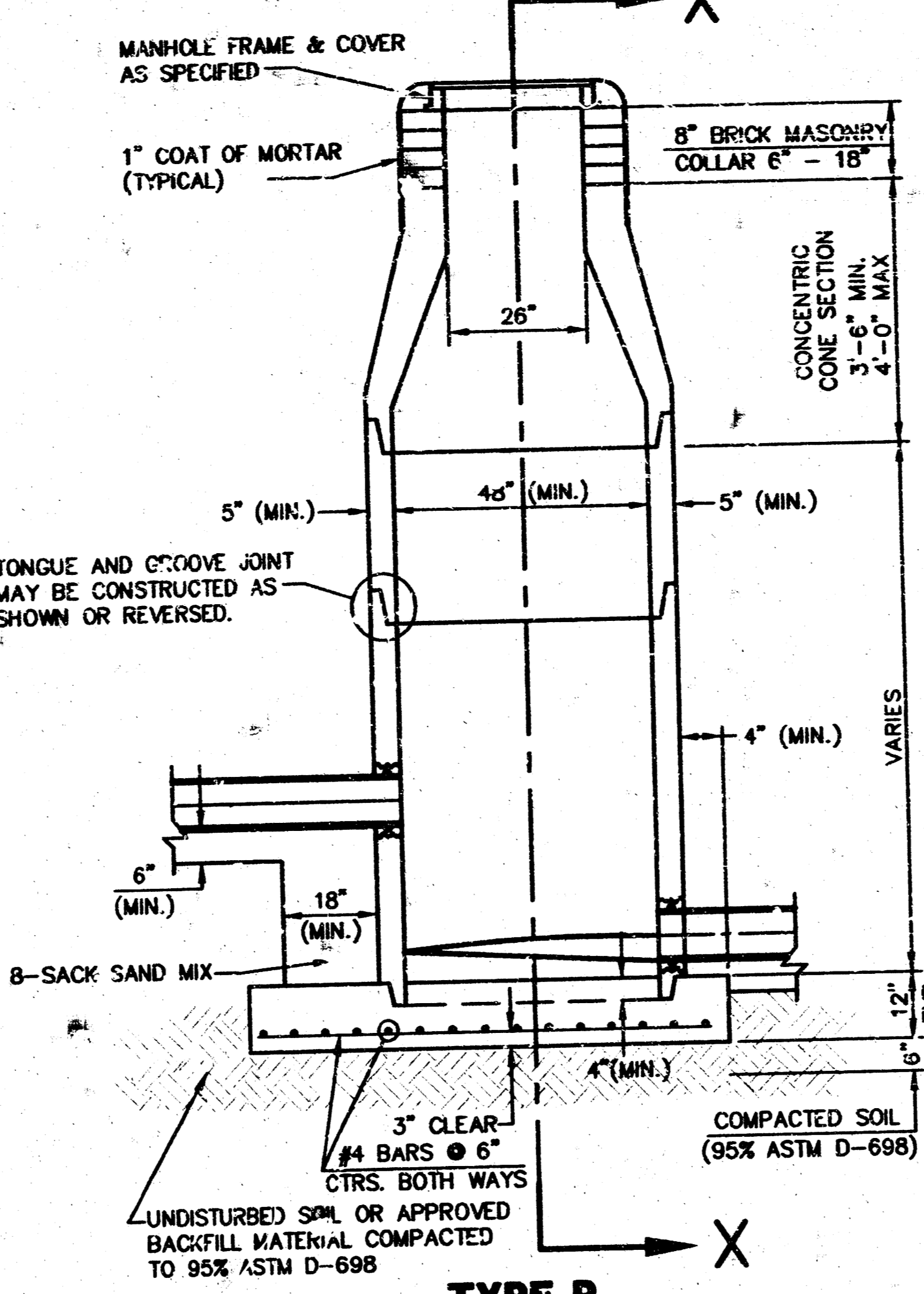
MANHOLE FRAME AND COVER

(TOTAL WEIGHT = 430 LBS.)

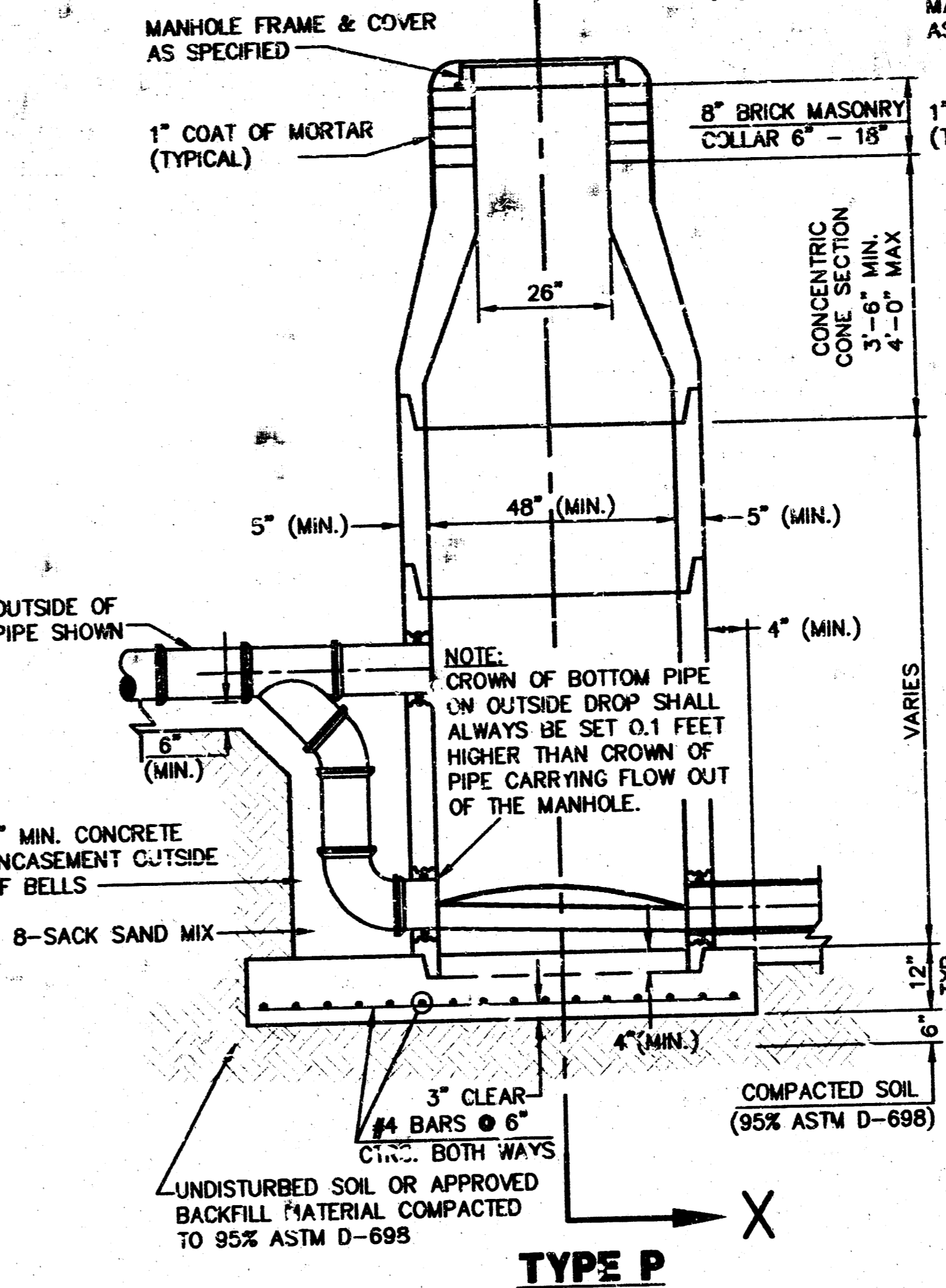
- MANHOLE FRAME AND COVER NOTES**
- CAST IRON MANHOLE FRAME AND COVER SHALL CONFORM TO ASTM A-48, CLASS 30, OR BETTER.
 - THE FRAMES AND COVERS SHALL BE OF A NONRUBBER TYPE OR WITH MACHINED BEARING SURFACES SO FITTING PARTS WILL NOT RATTLE OR ROCK UNDER TRAFFIC.
 - MANHOLE CASTINGS SHALL BE DEETER FOUNDRY INC. NO. 1281 OR APPROVED EQUAL, UNLESS OTHERWISE SPECIFIED IN THE SPECIAL CONDITIONS. (MINIMUM WT. - 430 LBS.) ALL MANHOLE CASTINGS, REGARDLESS OF TYPE, SHALL BE CONSIDERED SUBSIDIARY TO THE UNIT PRICE BID FOR THE VARIOUS MANHOLES TYPES.
 - GRIND ALL BURRS SMOOTH, CLEAN THOROUGHLY, THEN APPLY SHOP COAT OF ASPHALT BASE PAINT.
 - THE MANUFACTURER SHALL SUBMIT SHOP DRAWINGS TO THE ENGINEER FOR APPROVAL PRIOR TO MANUFACTURE. THE ENGINEER SHALL RETAIN THE RIGHT TO REJECT CASTINGS NOT CONFORMING TO THE SPECIFICATIONS OR THE APPROVED SHOP DRAWINGS.
 - WHERE SELF-SEALING MANHOLE FRAMES ARE SPECIFIED ON THE PLANS, THE MANHOLE FRAME SHALL BE FURNISHED WITH AN APPROVED SURFACE RING GASKET GROoved INTO THE BEARING SURFACE OF THE MANHOLE FRAME (PER DETAIL). THE RING GASKET SHALL NOT BE INSTALLED IN THE MANHOLE UNTIL AFTER FINAL INSPECTION AND ACCEPTANCE OF THE PROJECT BY THE ENGINEER. THE CONTRACTOR SHALL SUPPLY TO THE OWNER ONE (1) REPLACEMENT RING GASKET FOR EACH SELF-SEALING MANHOLE SPECIFIED.



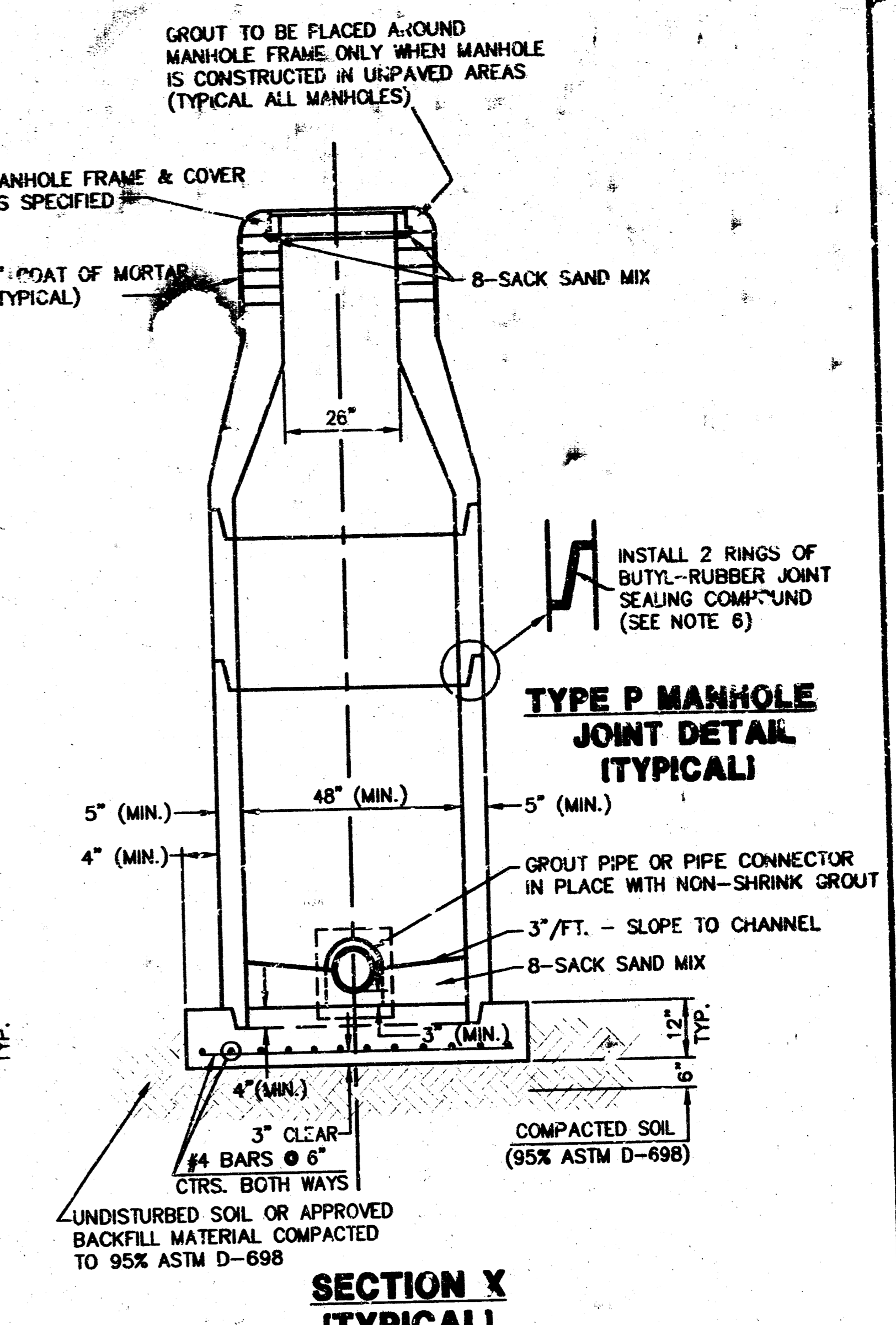
TYPE P STANDARD MANHOLE



TYPE P INSIDE DROP MANHOLE



TYPE P OUTSIDE DROP MANHOLE

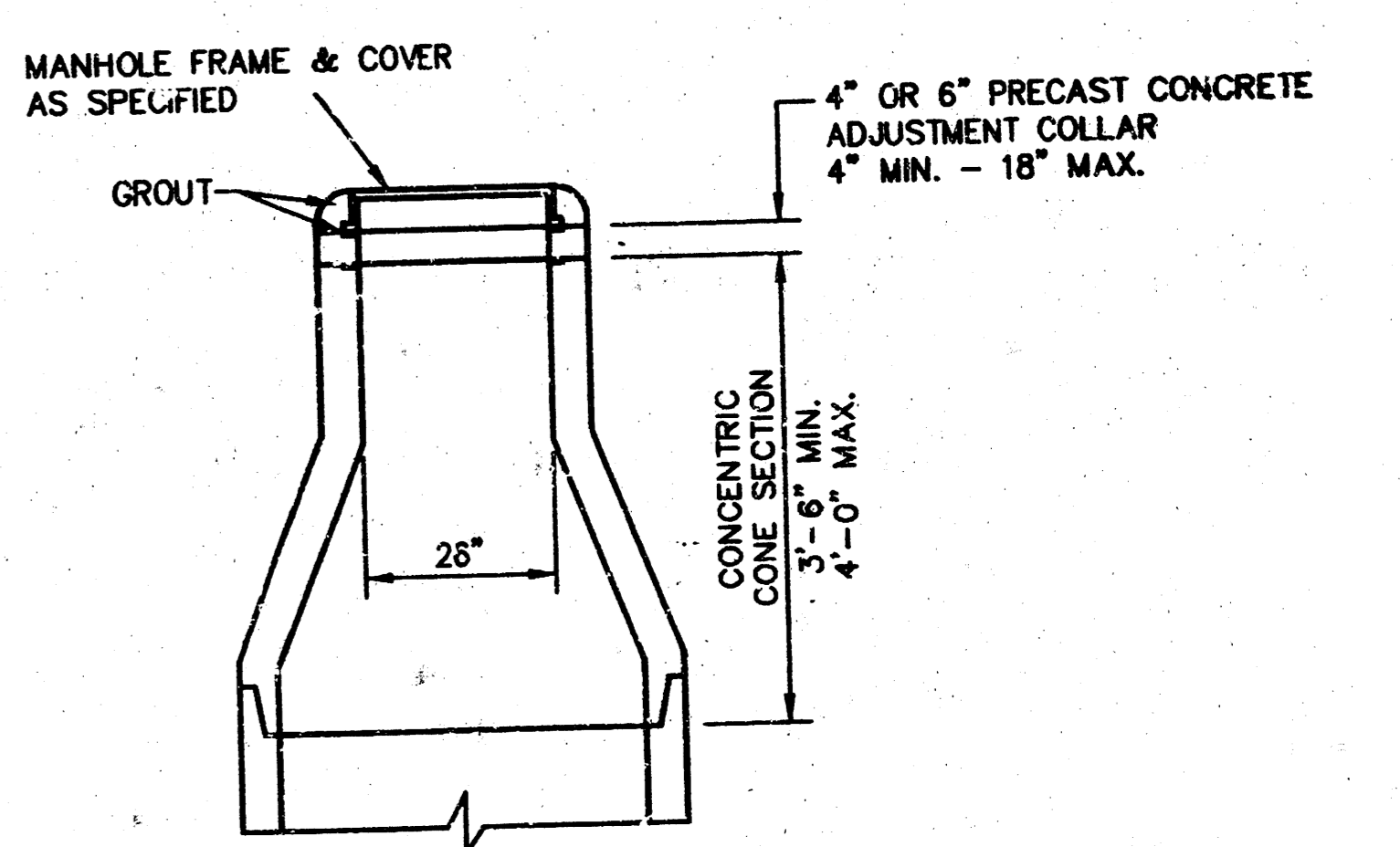


TYPE P MANHOLE JOINT DETAIL (TYPICAL)

GENERAL NOTES - PRECAST MANHOLE NOTES

- ALL PRECAST CONCRETE MANHOLE SECTIONS SHALL CONFORM TO THE LATEST REVISIONS OF A.S.T.M. C478 AS MODIFIED BY THE SPECIFICATIONS.
- NON-SHRINK GROUT SHALL BE NON-METALLIC TYPE.
- APPROVED FLEXIBLE WATERSTOP GASKETS SHALL BE INSTALLED TO JOIN THE SEWER TO THE MANHOLE WALL WHEN A.B.S. COMPOSITE PIPE OR P.V.C. PIPE IS USED. FOR OTHER TYPES OF PIPE THE SEWER SHALL BE GROUTED IN PLACE WITH NON-SHRINK GROUT. THE SEWER PIPE SHALL BE SUPPORTED WITH CONCRETE ENCASEMENT A MINIMUM OF 3 FEET FROM THE MANHOLE WALL AND TO THE FIRST JOINT FOR V.C.P. SUCH THAT THE JOINT REMAINS FLEXIBLE.
- ALL INSIDE SURFACES OF THE CONCRETE MANHOLE WHICH WOULD BE EXPOSED TO SEWER GAS SHALL BE COATED WITH 2 COATS TNEPEC SERIES 66 HI-BUILD EPOXULINE, DRY THICKNESS OF 8 MILS (MIN.).
- EXTERIOR MANHOLE WALLS SHALL BE COATED WITH 1 COAT MOBILARMA 633 BITUMINUS COATING.
- JOINT SEALING COMPOUND SHALL BE KENT SEAL NO. 2 OR APPROVED EQUAL.
- PRECAST MANHOLES SHALL BE SET AT LEAST 4 INCHES INTO THE MANHOLE BASE.
- TOP OF MANHOLE FLOOR SLAB SHALL BE AT LEAST 3 INCHES BELOW THE FLOW LINE OF THE OUTLET PIPE TO INSURE SUFFICIENT MINIMUM THICKNESS OF SHAPED INVERT.
- LIFTING HOLES SHALL BE FILLED WITH NON-SHRINK GROUT AND THE INTERIOR SURFACE COATED AS SPECIFIED.
- MORTAR USED IN MASONRY CONSTRUCTION SHALL CONTAIN 8 SACKS OF CEMENT PER CUBIC YARD. CONCRETE USED IN MANHOLE BASES SHALL CONFORM TO THE REQUIREMENTS OF CONCRETE FOR CONCRETE PAVEMENT CONSTRUCTION AS SPECIFIED IN THE CITY STANDARD PAVING SPECIFICATIONS USING CITY CONCRETE PAVEMENT MIX WITHOUT AIR ENTRAINING ADMIXTURE. MORTAR SHALL BE PLACED AROUND THE MANHOLE RING AS SHOWN ON THE DRAWINGS WHEN MANHOLES ARE CONSTRUCTED IN UNPAVED AREAS. MANHOLES CONSTRUCTED WHERE PIPE SIZES ARE SMALLER THAN 24" SHALL HAVE AN INSIDE DIAMETER OF 4" MANHOLES CONSTRUCTED WHERE PIPE SIZES ARE 24" OR LARGER SHALL HAVE AN INSIDE DIAMETER OF 5". COMPLETED MANHOLE SHALL BE WITHOUT LEAKS AND WATER TIGHT.
- REINFORCING STEEL SHALL BE INSTALLED IN THE MANHOLE BASES AND SHALL CONSIST OF NO. 4 BARS PLACED ON 6" CENTERS IN BOTH DIRECTIONS. THE MANHOLE BASE REINFORCEMENT SHALL BE PLACED AT LEAST 3" ABOVE THE BOTTOM OF THE MANHOLE BASE. ALL COSTS FOR FURNISHING AND INSTALLING REINFORCING STEEL SHALL BE INCLUDED IN THE UNIT PRICE BID FOR THE MANHOLE.
- OPENINGS SHALL BE CUT INTO THE MANHOLE WALL WHEN OUTSIDE DROPS ARE CONSTRUCTED ON EXISTING MANHOLES. SUCH OPENINGS CUT INTO EXISTING MANHOLES SHALL BE AS SMALL AS PRACTICAL TO FACILITATE INSTALLING AND GROUTING THE NEW PIPE IN PLACE. WATERSTOP GASKETS SHALL BE USED WITH P.V.C. AND A.B.S. COMPOSITE PIPE. THE NEW PIPE SHALL BE GROUTED INTO THE OPENING USING AN APPROVED NONSHRINK GROUT FOR THE FULL MANHOLE WALL THICKNESS. THE EXTERIOR OF THE COMPLETED CONNECTION SHALL BE SEALED WITH AN APPROVED BITUMINOUS COATING SUCH THAT THE CONNECTION WILL BE WATER TIGHT. FLOOR OF MANHOLE SHALL BE MODIFIED TO MATCH THE NEW FLOW CHANNEL FOR THE NEW CONNECTION AS INDICATED BY THE DRAWING. THIS WORK, INCLUDING MODIFICATION OF MANHOLE FLOOR, SHALL BE PAID FOR AT THE UNIT PRICE BID FOR OUTSIDE DROP STACK CONSTRUCTED ON EXISTING MANHOLE.
- THE FLOORS OF ALL MANHOLES SHALL BE SHAPED WITH FLOW CHANNELS SUCH THAT THE MANHOLES WILL BE SELF CLEANING AND FREE OF AREAS WHERE SOLIDS COULD BE DEPOSITED AS SEWAGE FLOWS THROUGH THE MANHOLE FROM ALL INLET PIPES TO THE OUTLET PIPE. FLOW CHANNELS SHALL BE FORMED TO MATCH THE BOTTOM HALVES OF THE INFLOWING PIPES AND THE OUTFLOWING PIPE AS SHOWN BY THE DRAWINGS EXCEPT FOR INSIDE DROP MANHOLES. FLOW CHANNELS FOR INSIDE DROP MANHOLES SHALL BE CONSTRUCTED AS INDICATED BY THE DRAWING. MANHOLE FLOORS SHALL HAVE SLOPES OF 3 INCHES PER FOOT IN THE AREAS OUTSIDE OF THE FLOW CHANNELS SLOPED TOWARD THE FLOW CHANNELS. PIPES LAID THROUGH MANHOLES SHALL HAVE THE TOP HALF REMOVED TO NEAT LINES FOR THE FULL INSIDE DIAMETER OF THE MANHOLE. MANHOLE FLOORS SHALL THEN BE SHAPED AROUND THE BOTTOM HALF OF THE PIPE WHICH FORMS THE FLOW CHANNEL.
- PIPES INSTALLED WITHIN THE EXCAVATION MADE FOR THE MANHOLE SHALL BE CRADLED WITH CONCRETE TO THE LIMITS OF THE MANHOLE EXCAVATION. WHEN CLAY PIPE IS USED, THE CRADLE SHALL EXTEND TO THE FIRST JOINT OUTSIDE THE MANHOLE. THE CRADLE SHALL BE TERMINATED AT THE CLAY PIPE JOINT IN A MANNER WHICH WILL MAINTAIN THE FLEXIBILITY OF THE JOINT. COST OF CRADLE WITHIN MANHOLE EXCAVATION OR TO CLAY PIPE JOINTS ADJACENT TO MANHOLE SHALL BE INCLUDED IN THE UNIT PRICE BID FOR THE MANHOLE.
- MANHOLE COVER CASTINGS AND MANHOLE FRAME CASTINGS SHALL CONFORM TO THE REQUIREMENTS AS INDICATED IN THE STANDARD SPECIFICATIONS AND AS SHOWN IN THE STANDARD DETAIL DRAWING.
- THE VERTICAL DROP IN INSIDE DROP MANHOLES SHALL NOT EXCEED 2' FOR INFLOWING PIPES. THE CROWNS OF INFLOWING PIPES SHALL NEVER BE SET LOWER THAN THE CROWN OF THE OUTFLOWING PIPE.
- STANDARD MANHOLES AND STANDARD INSIDE DROP MANHOLES SHALL BE BID AS STANDARD MANHOLES FOR THE TYPE AND DIAMETER INDICATED. OUTSIDE DROP MANHOLES SHALL BE BID AS STANDARD OUTSIDE DROP MANHOLES FOR THE TYPE AND DIAMETER INDICATED. ALL MANHOLE DIAMETERS WILL BE 4" UNLESS INDICATED OTHERWISE.

ALTERNATE CONSTRUCTION IN UNPAVED AREAS



MANHOLE DETAILS

CITY OF WICHITA, KANSAS

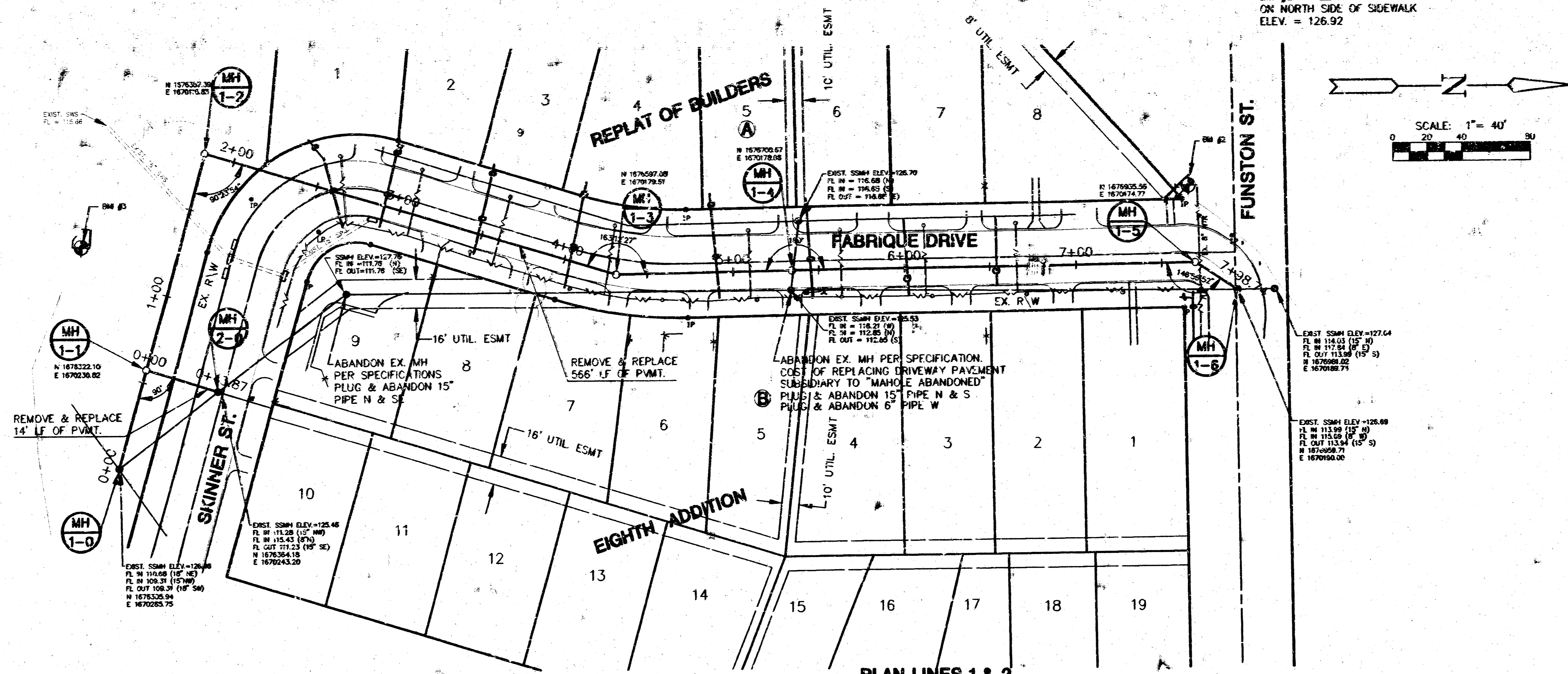
Design	C.O.W.	Checked by	Checked by
Drawn by	Date	Date JAN. 1998	Job No. 9713503

2
5

BM #3 - EAST SANITARY SEWER STRUCTURE
NORTH SIDE CREEK 100' ± S 1654 S FABRIQUE
ELEV. = 126.14

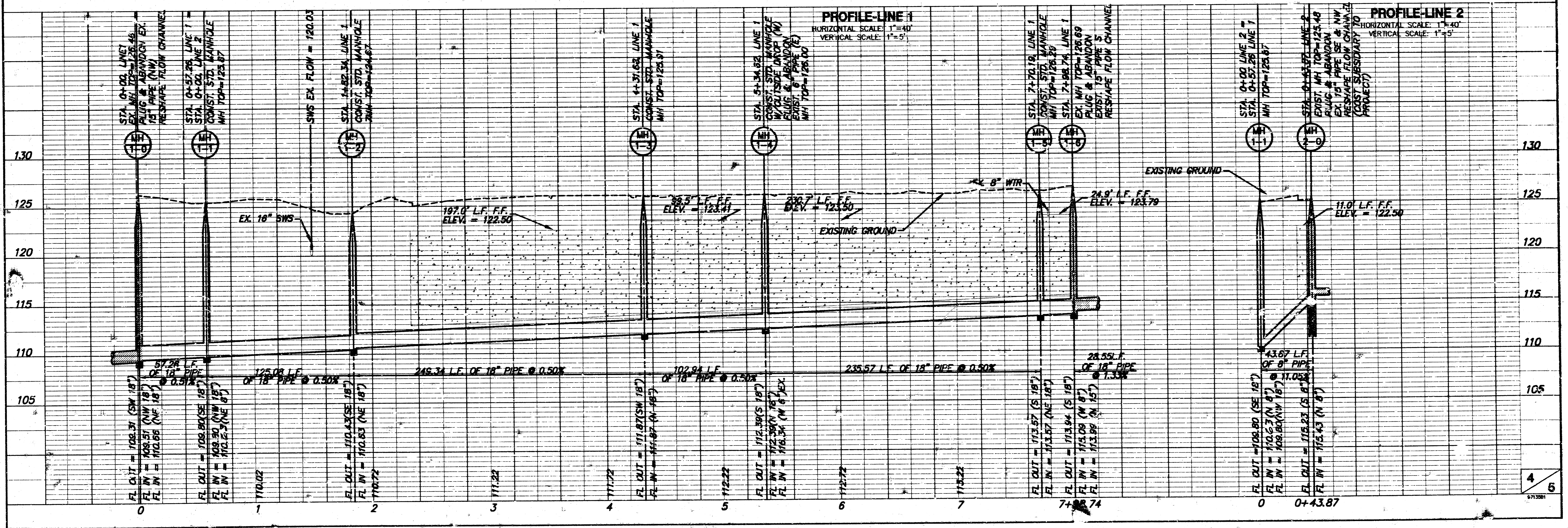
BM #2 - CUT 3' E OF EAST END FOOTBRIDGE
ON NORTH SIDE OF SIDEWALK
ELEV. = 126.92

**FABRIQUE DRIVE
SAN. SEWER LINES 1 & 2
MAIN 2, W/S
PROJ. #468-82785**



PLAN-LINES 1 & 2
SCALE: 1"=40'

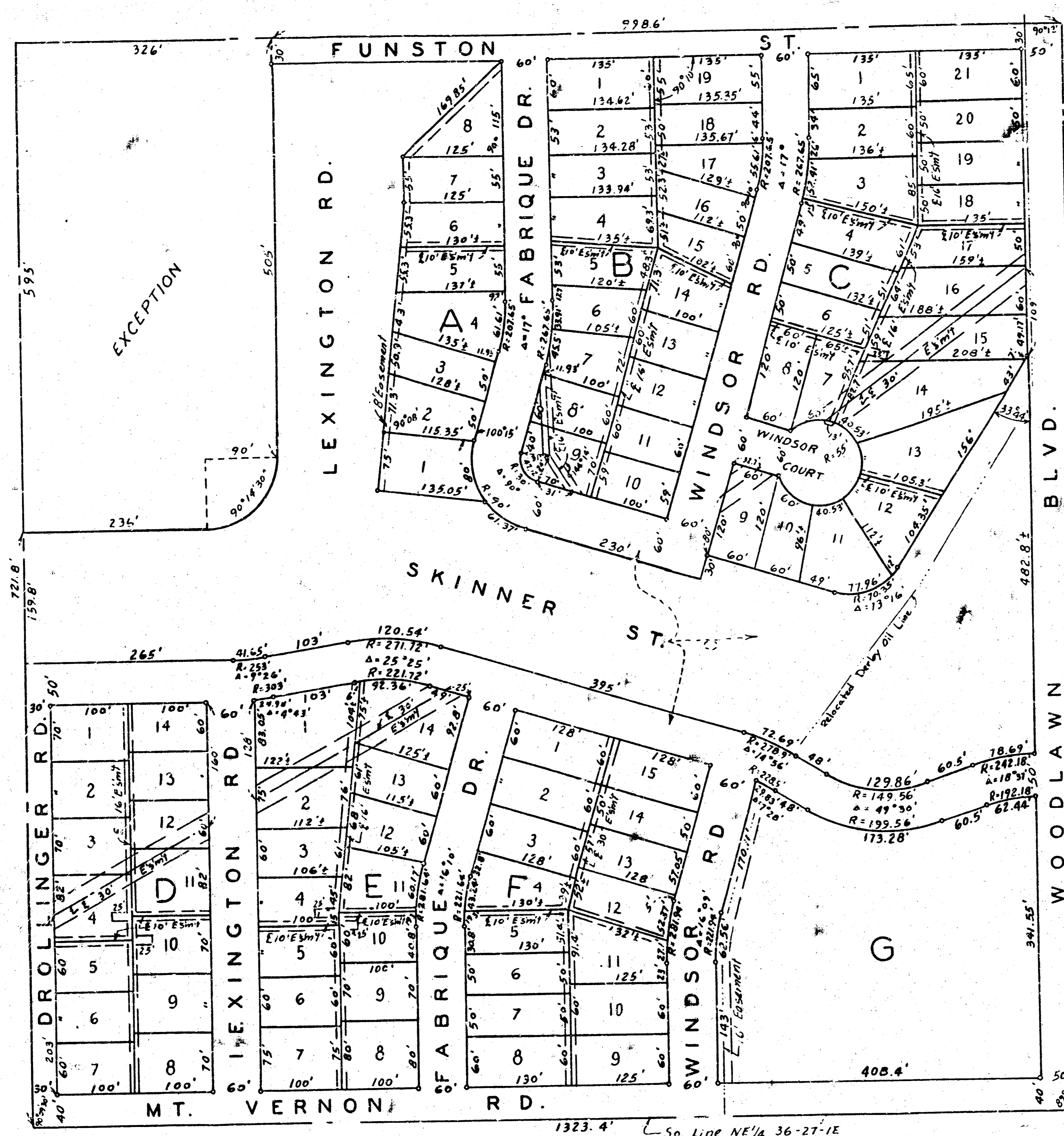
NOTE:
DEPTHS OF EXISTING UNDERGROUND UTILITIES SHOWN ARE APPROXIMATE. CONTRACTOR SHALL VERIFY UNDERGROUND UTILITY DEPTH, AT APPROPRIATE CROSSINGS, PRIOR TO EXCAVATION. CONTRACTOR SHALL NOTIFY THE ENGINEER IF THE EXISTING UTILITY DEPTH CONFLICTS WITH PROPOSED PLAN DEPTH.



450

REPLAT OF BUILDERS EIGHTH ADDITION TO WICHITA, KANSAS

LIBRARY COPY
SEDCWICK COUNTY, KANSAS
REGISTER OF DEEDS
LARRY CONSOLVER



State of Kansas }
County of Sedgwick } 55

I, Kenneth O. Taylor, civil engineer in and for said state and county do hereby certify that I have surveyed and platted "Replat of Builders Eighth Addition" to Wichita, Kansas and that the accompanying plat is a true and correct exhibit of said survey described as follows: The E 1/2 of the NE 1/4 of Section 36, T 27 S, R 1 E, except the North 1335 ft thereof and except a tract described as follows: Beginning at a point 1316.8 ft north of the SW corner of the E 1/2 of the NE 1/4 of Section 36, T 27 S, R 1 E, thence east 326 ft, thence south 505 ft, thence southwest along an arc with a radius of 90 ft and a subtended angle of 90° 14' 30", thence west 236 ft, thence north 595 ft, to the point of beginning.

Kenneth O. Taylor Civil Engineer

Know all men by these presents, that we, Builders, Inc., a corporation, by its President, W. W. Garvey and Secretary, J. D. Stone, have caused the land described in the civil engineers certificate to be platted into lots, blocks, streets, roads, drives, a lane and a boulevard to be known as "Replat of Builders Eighth Addition" to Wichita, Kansas. Easements are hereby granted as indicated on the plat for the construction and maintenance of all public utilities. The streets and roads are hereby dedicated to and for the use of the public. As platted and dedicated by this plat and Builders Sixth Addition, Skinner St. shall include a 60' street north and a 50' street south of an open area, and Lexington Rd. shall include an open area and the 60' street west thereof. These streets and open areas so described together shall be regarded each as one street under the street improvement laws of the State of Kansas and under G.S. 1945 Suppl. 13-1382 et seq.

BUILDERS, Inc., a Corporation
By W. W. Garvey President
J. D. Stone Secretary

State of Kansas }
County of Sedgwick } 55

Se it remembered that on this 12 day of Dec. 1952, before me a notary public in and for said county and State came Builders, Inc., a corporation, by its President, W. W. Garvey and Secretary, J. D. Stone, to me known to be the same persons who executed the foregoing Instrument of writing and duly acknowledged the execution of the same as their voluntary act and deed and as the act and deed of said corporation in testimony whereof I have heretofore set my hand and affixed my notarial seal the day and year above written.

Wm. J. Bushong Notary Public

My commission expires Mar. 26, 1953.

This plat of "Replat of Builders Eighth Addition" to Wichita, Kansas, has been submitted to and considered by the City Planning Commission of the City of Wichita, Kansas and is hereby transmitted to the Board of City Commissioners of the City of Wichita, Kansas, with the recommendation that such plat be approved as proposed.

Dated this 2nd day of December 1952.

The City Planning Commission of the City of Wichita, Kansas.

By Francis R. Garvey, Chairman
J. Thomas, Secretary

Approved by the Board of City Commissioners this 19 day of Dec. 1952.

Walt Reeler President
W. E. Egan City Clerk

State of Kansas }
County of Sedgwick } 55

This is to certify that the instrument was filed for record in the Register of Deeds office on the 14 day of Dec. 1952, at 7:00 o'clock A. M. and is duly recorded.

L. S. Osterman Register of Deeds



Approved by the Board of County Commissioners
this 14 day of DECEMBER 1952.
Edna Schwanter County Clerk



Entered on public record this 14 day of
DECEMBER 1952.
Edna Schwanter County Clerk

B2-6-20

RES # 299 Book Page 67

14-02-05-02