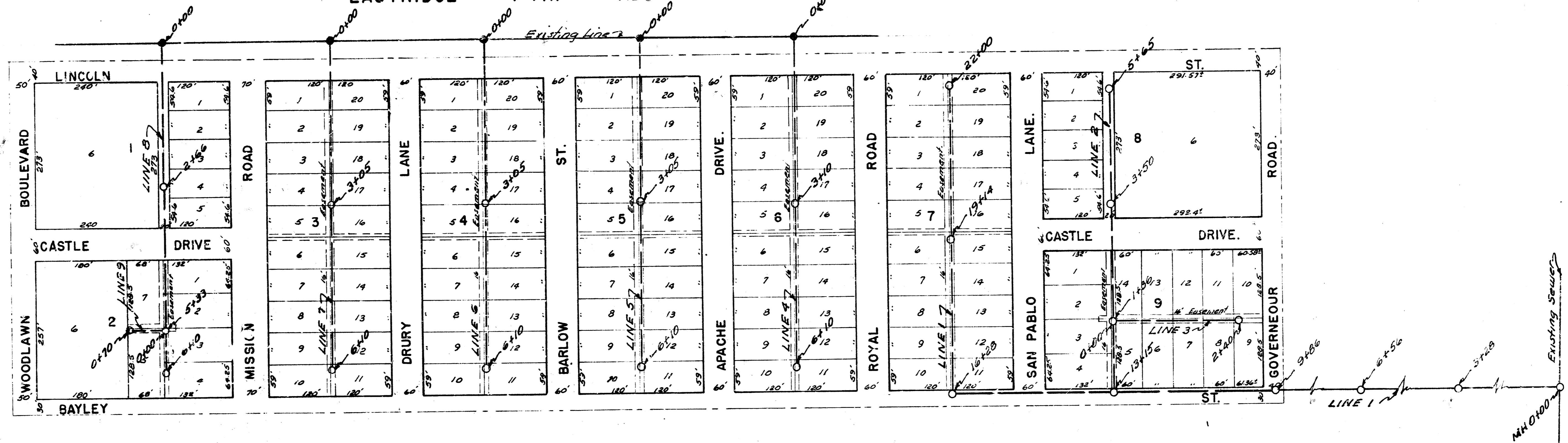
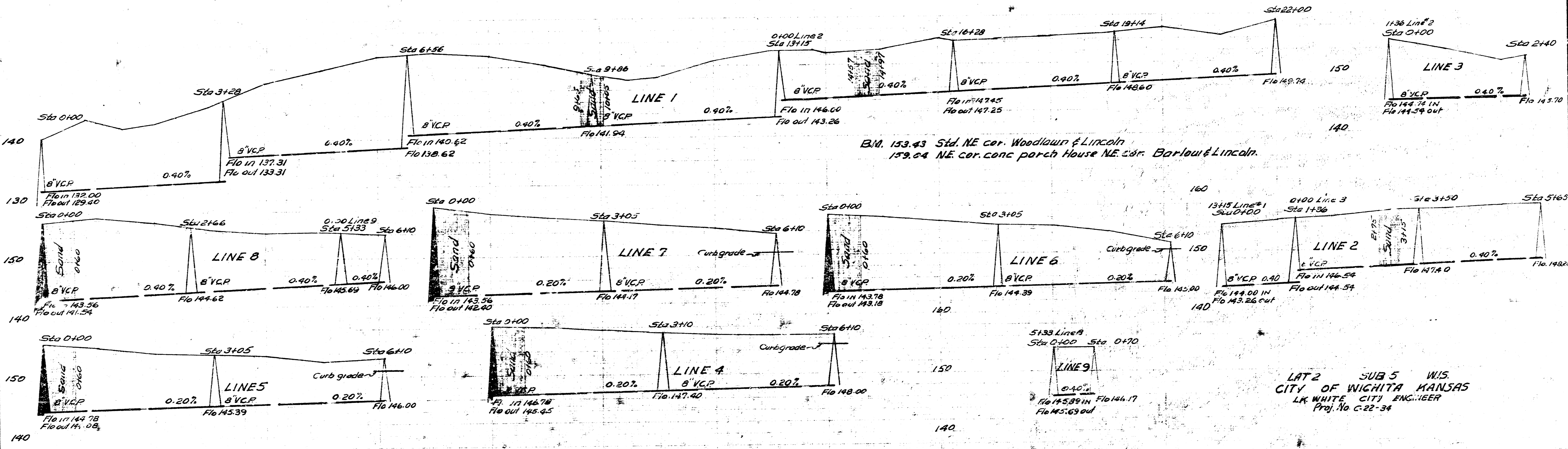


EASTRIDGE 7 TH. ADDITION.



8-12-52
 L. Williams
 574
 Drawn by
 Checked by
 E. G. Mc...



E.M. 153.43 Std. NE cor. Woodlawn & Lincoln
 159.04 NE cor. conc. porch House NE cor. Barlow & Lincoln.

LAT 2 SUB 5 W15.
 CITY OF WICHITA KANSAS
 LK WHITE CITY ENGINEER
 Proj. No. C-22-34

Robert L. Williams, Civil Engineer
 Wichita, Kansas
 18 August, 1952.