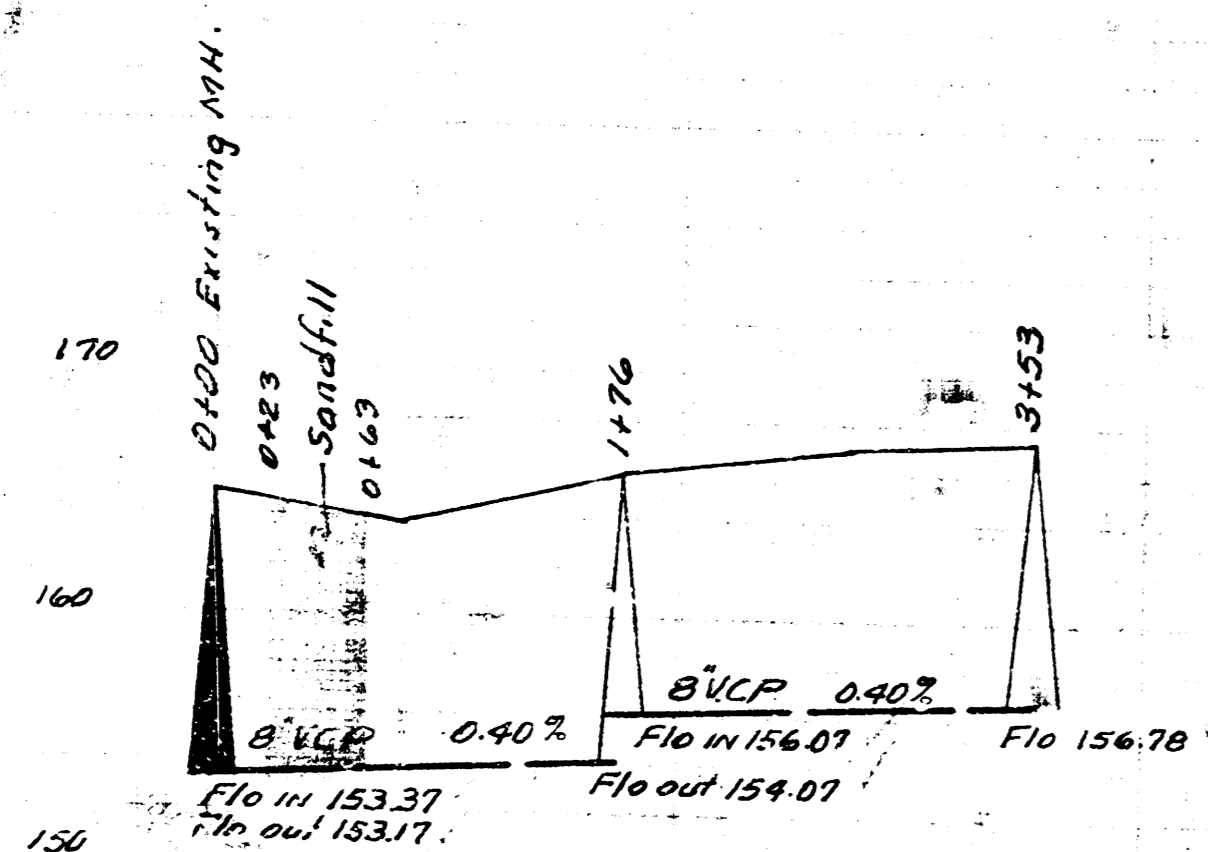
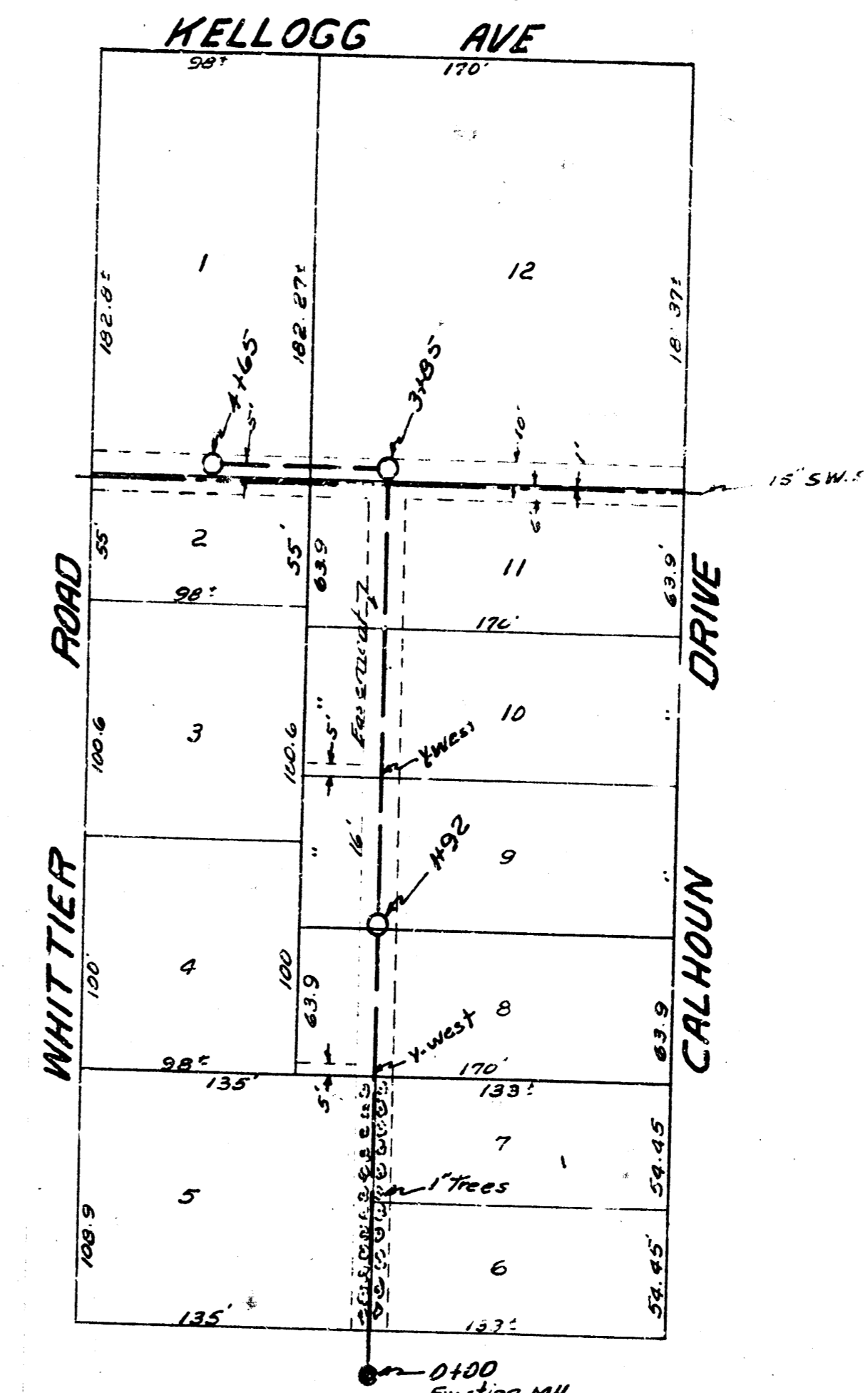
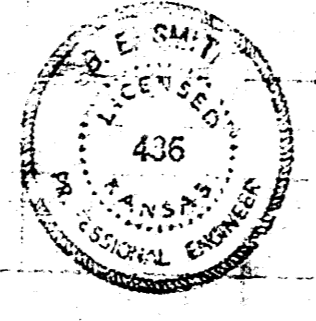


BM. 167.26 M in Mueller E.P. NW Cor. Lightner & Orme.

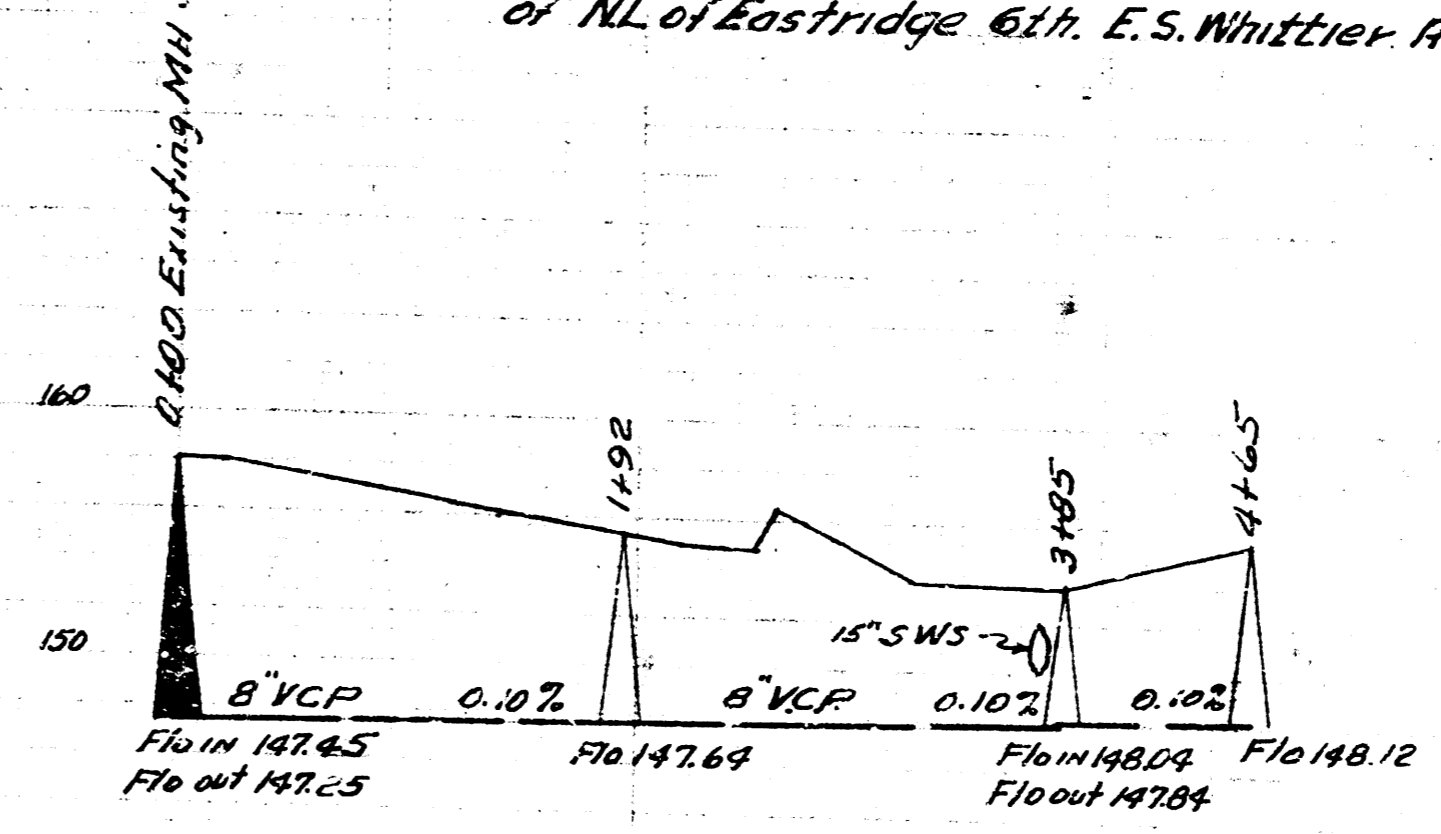


Date 1-2-53  
 Drawn by McClain  
 Checked by McClain  
 Sheet No. 49-Y

LAT. II SUB. 3 WIS  
 CITY OF WICHITA KANSAS  
 L.K. WHITE CITY ENGINEER  
 Proj. No. C-22-93



BM. 158.20 R.R. Spike W.S. Bell Tel. Pole 100' North of N.L. of Eastridge 6th. E.S. Whit Tier Rd.



Date 1-2-53  
 Drawn by McClain  
 Checked by McClain  
 Sheet No. 49-Y

LAT. 3 SUB. 5 WIS  
 CITY OF WICHITA KANSAS  
 L.K. WHITE CITY ENGINEER  
 Proj. No. C-22-55

