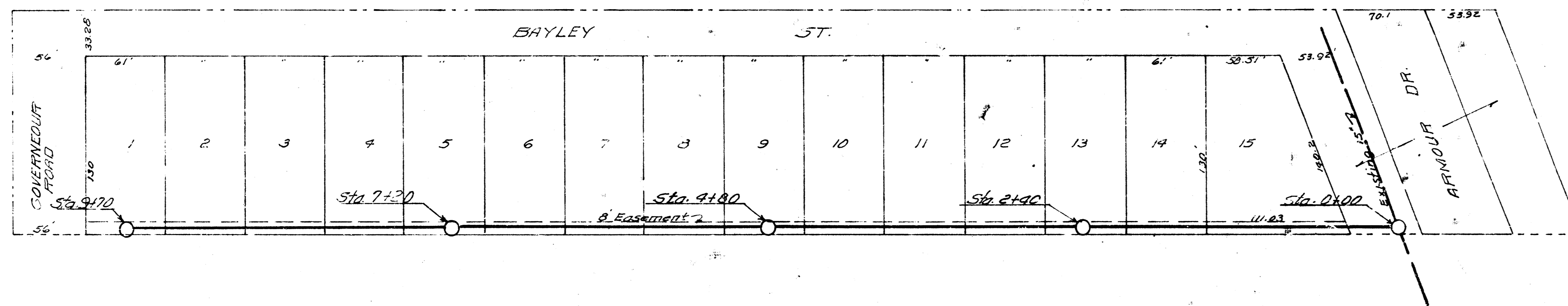
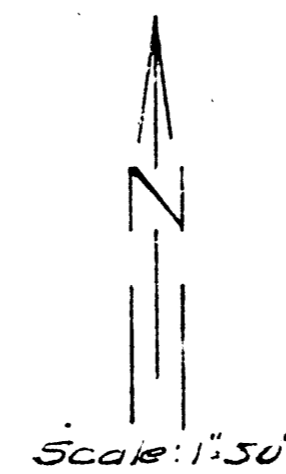


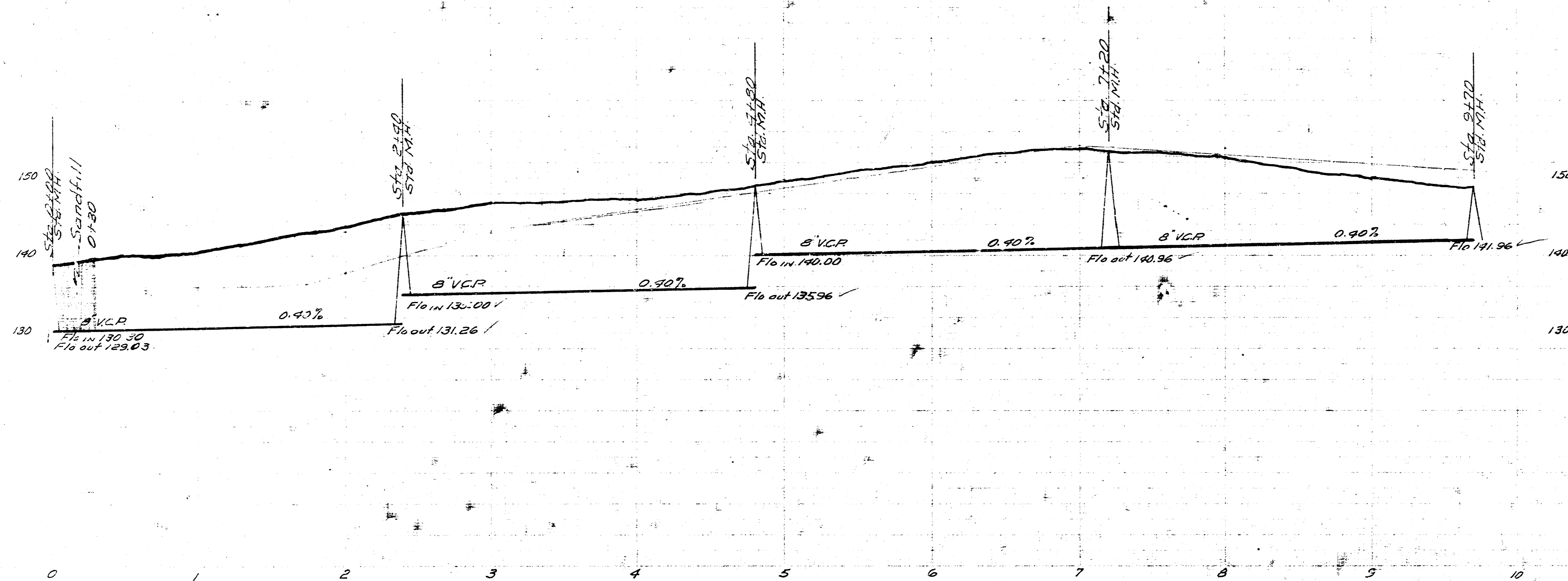
EASTRIDGE 10th. ADDITION



B.M. 141.58 So Rim M.H. Westside Armour Dr. bet. Bayler & Castle Dr.

Note - Wyes shall be laid south opposite each bldg site
two wyes shall be laid south opposite lot 15
approx. 60' apart.

Date 5-28-54
Plan by McLean
Checked by J.H.F.
Sheet No. 11-36



LAT. 6 SUB. MAIN 5 WIS.
CITY OF WICHITA KANSAS
B.E. SMITH CITY ENGINEER
Proj No. C-24-33