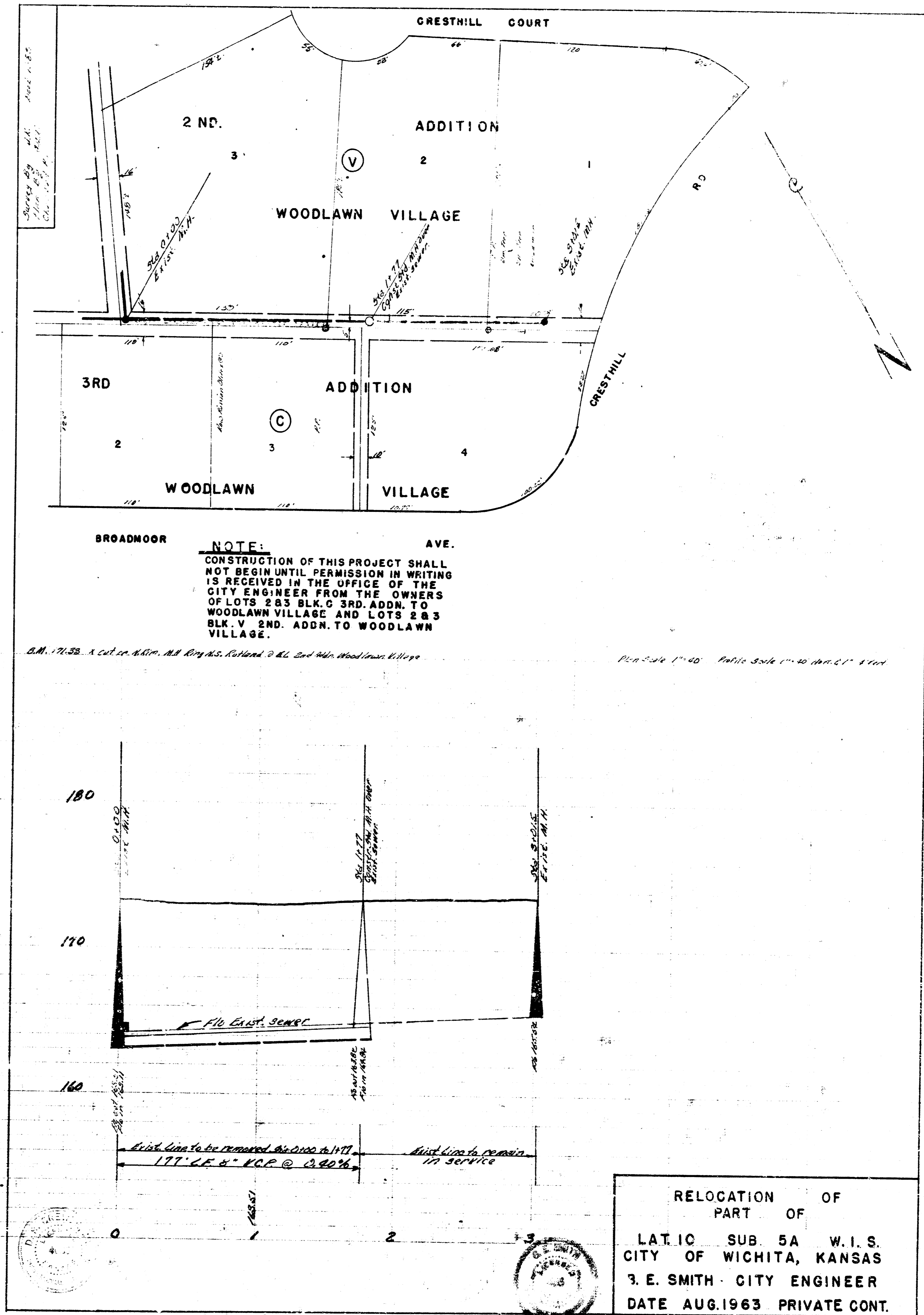


LAT. 13, SUB. 4, S. S. NO. 22  
 CITY OF WICHITA, KANSAS  
 B. E. SMITH CITY ENGINEER  
 JULY, 1963 PROJECT NO. C22-11



RELOCATION OF PART OF  
 LAT. 13, SUB. 5A W.I.S.  
 CITY OF WICHITA, KANSAS  
 B. E. SMITH CITY ENGINEER  
 DATE AUG. 1963 PRIVATE CONT.