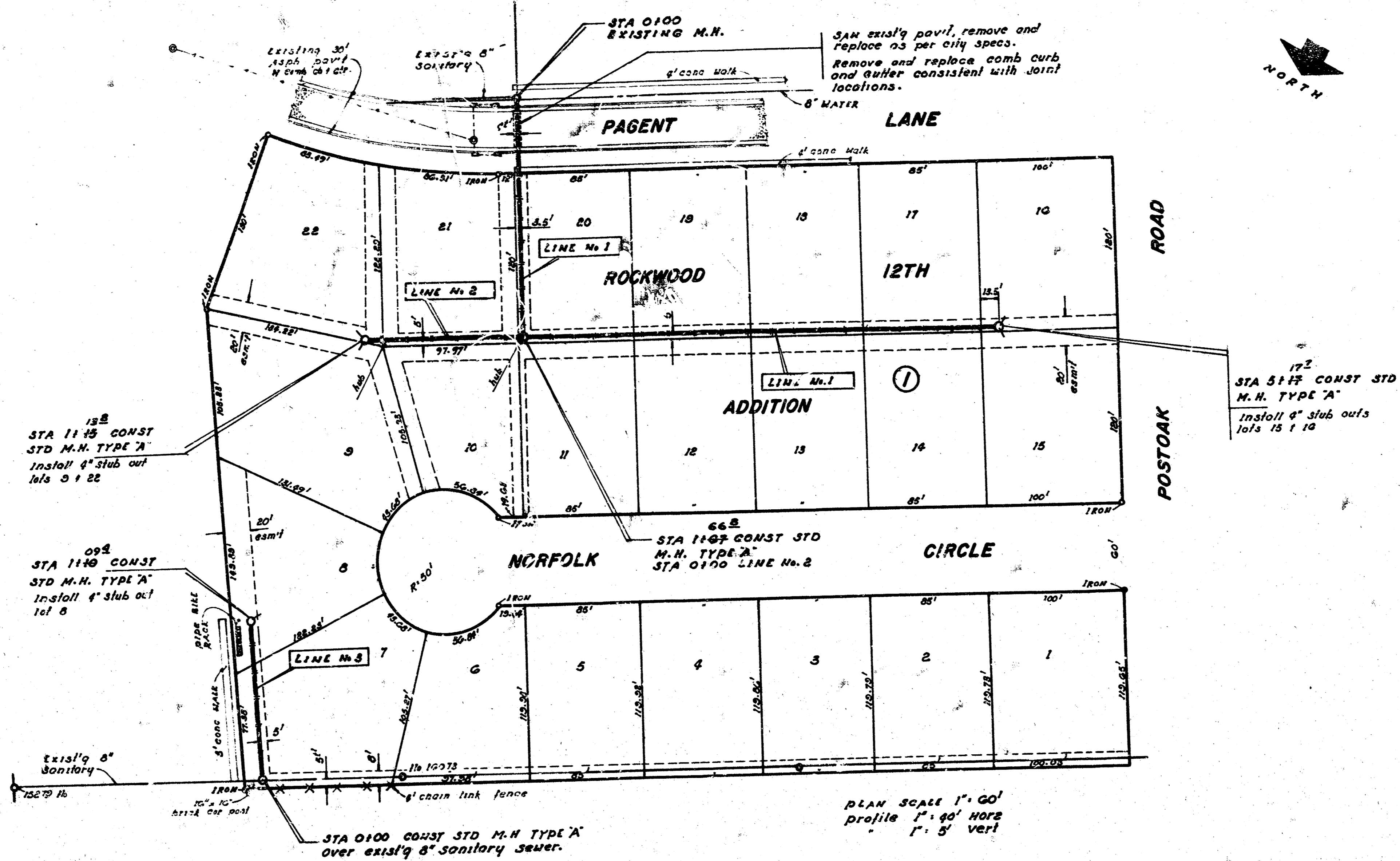
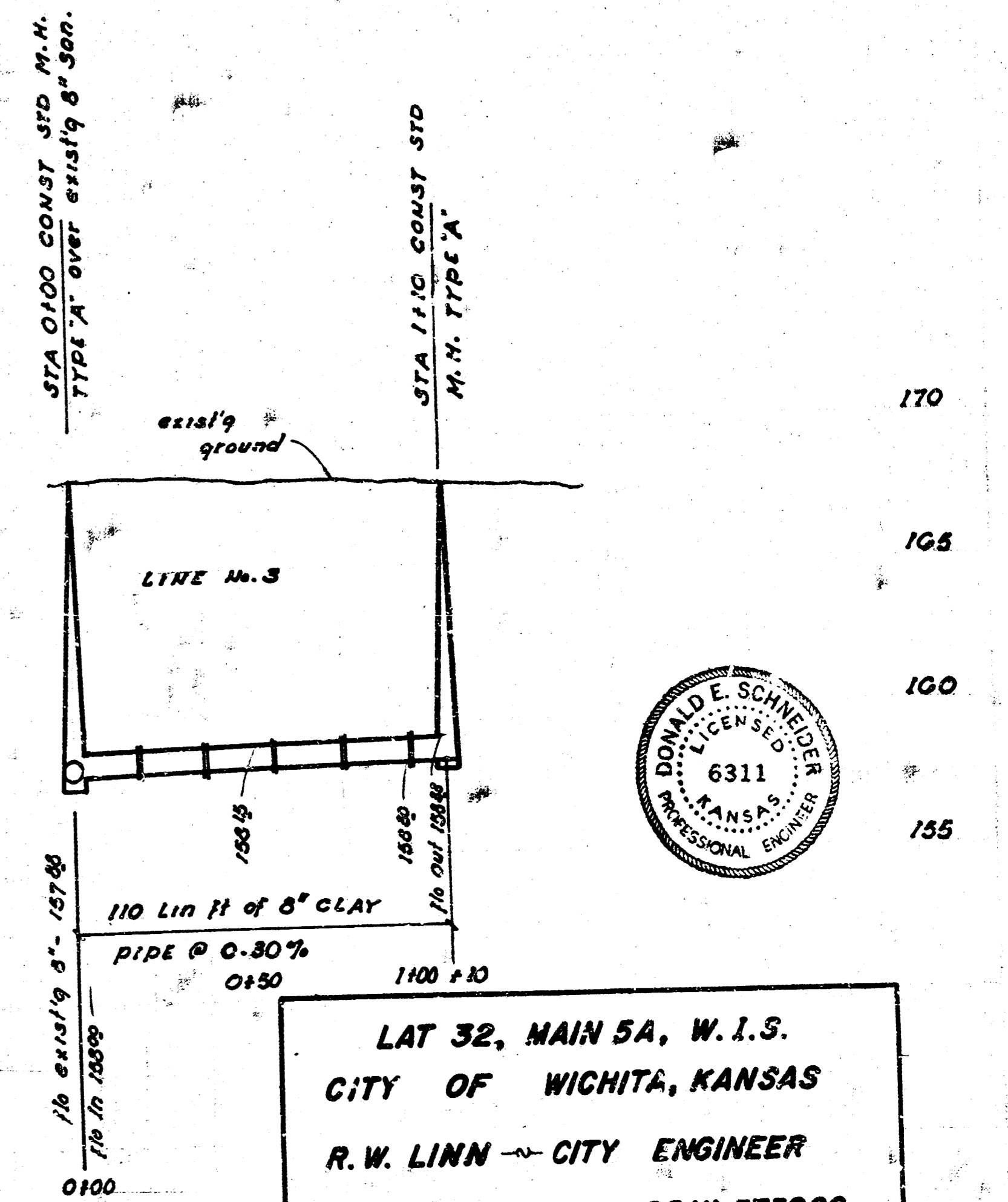
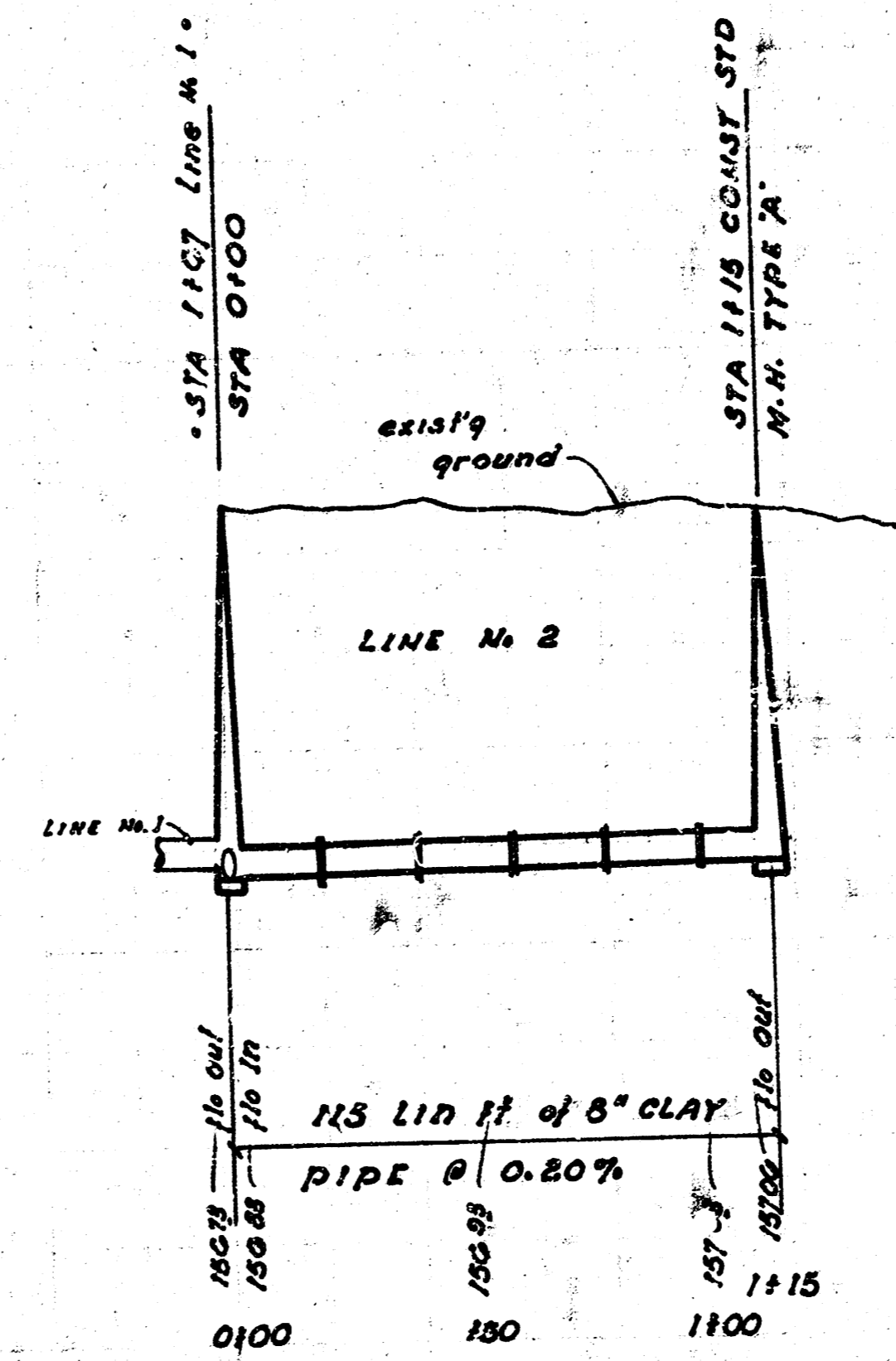
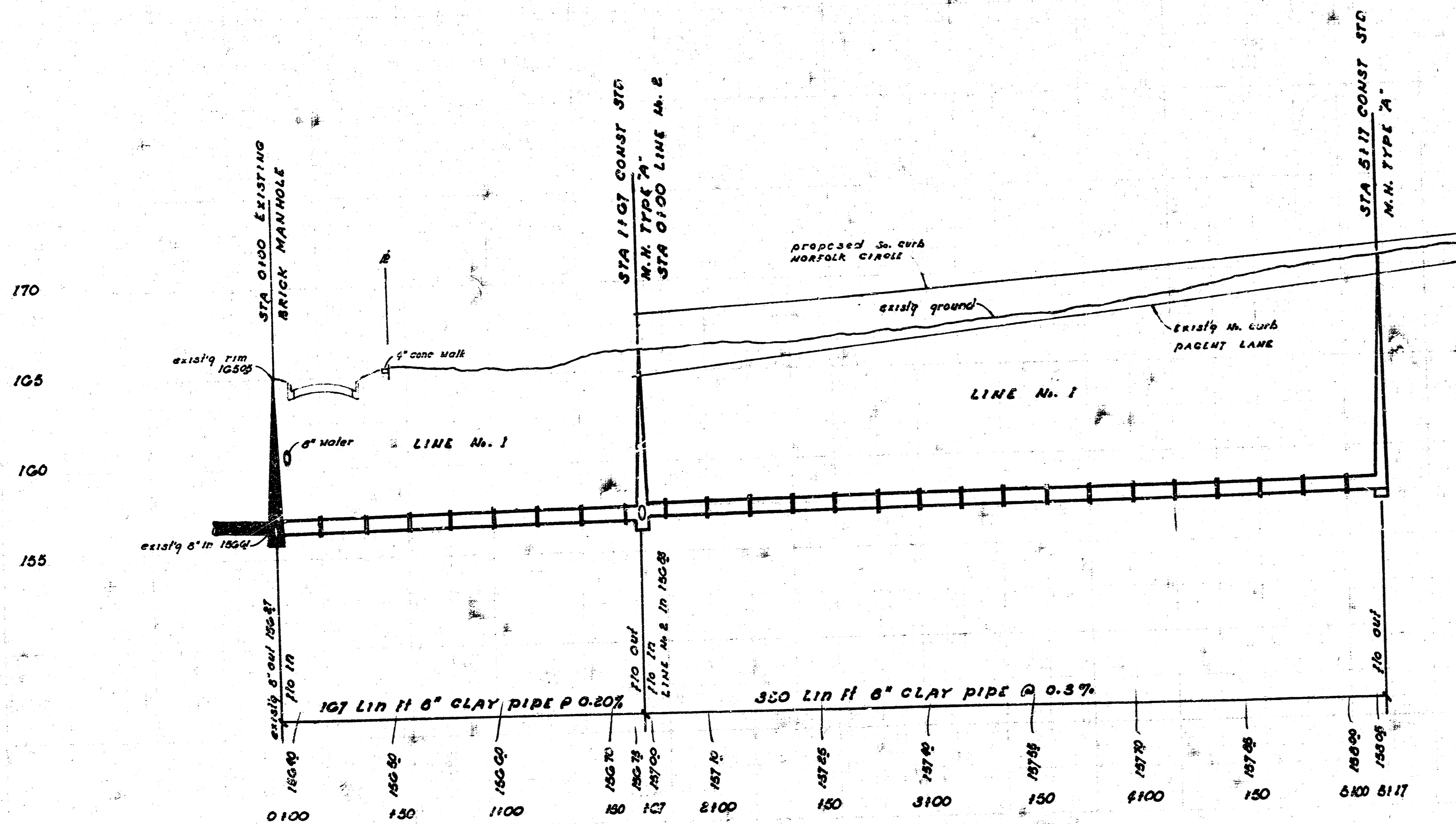


B.M. 10152 CITY STANDARD of ARMOUR and CENTRAL  
 B.M. 17435 N.E. corner conc porch 1/4" 251 POSTOAK ROAD.  
 B.M. 10353 S.E. corner conc step on the back side 1/4" 240 PENROSE.



NOTE: REMOVAL OF PIPE BACK TO BE CONSIDERED AS SUBSIDIARY TO THE OTHER ITEMS OF WORK.



LAT 32, MAIN 5A, W.I.S.  
 CITY OF WICHITA, KANSAS  
 R.W. LINN - CITY ENGINEER  
 Date 11/15/40 Proj No. DBKL 573086

FILMED FROM THE BEST AVAILABLE COPY