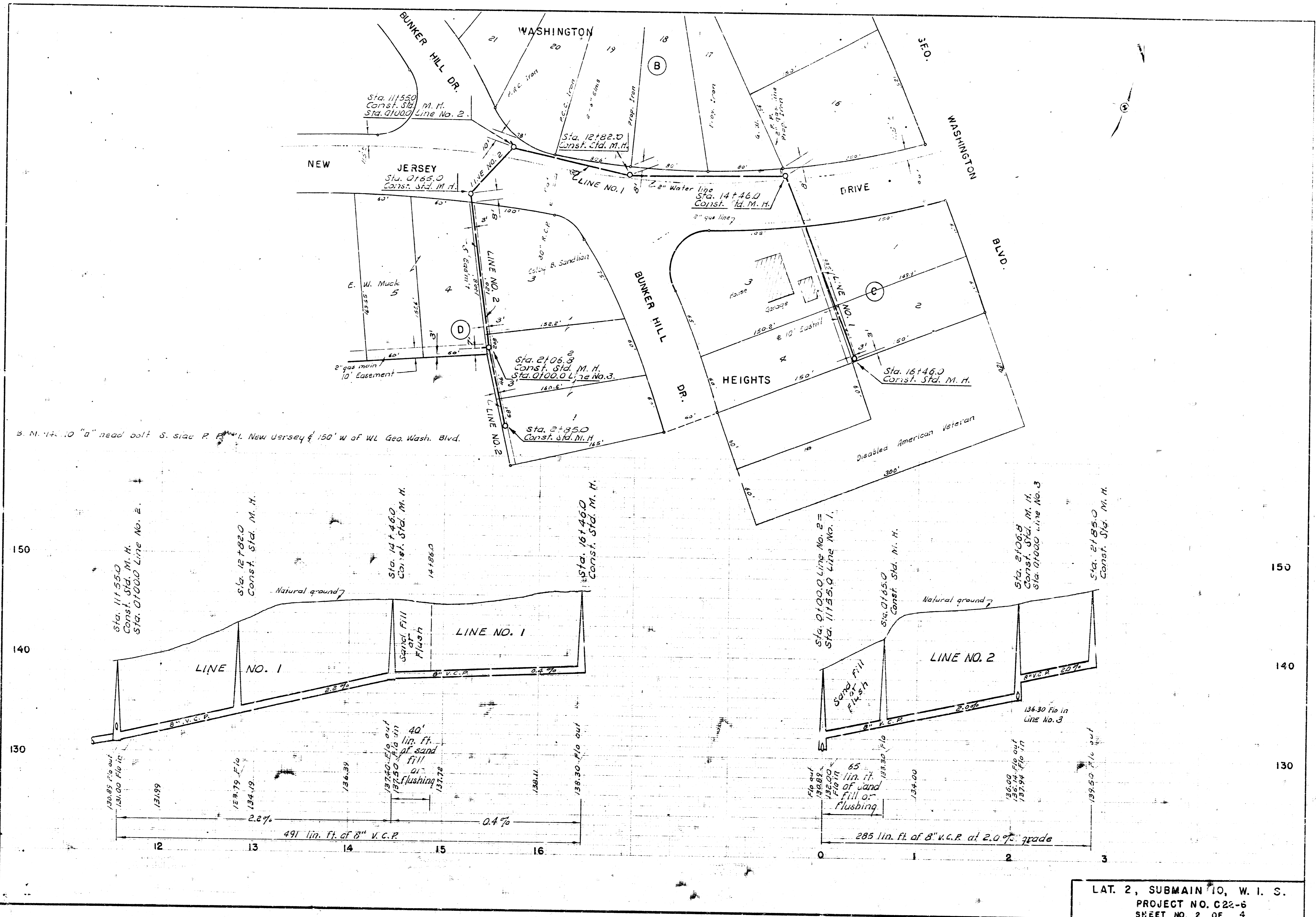
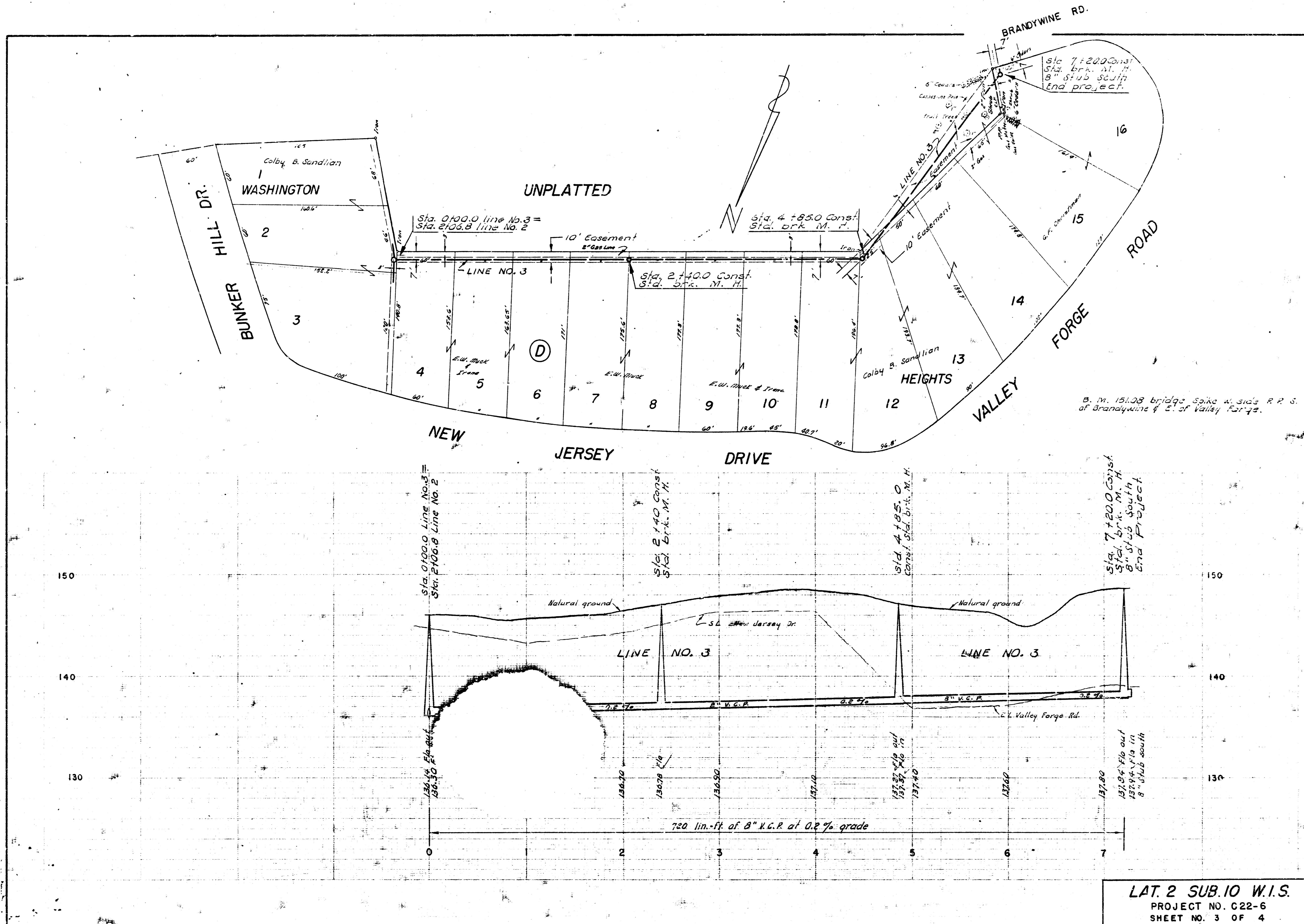


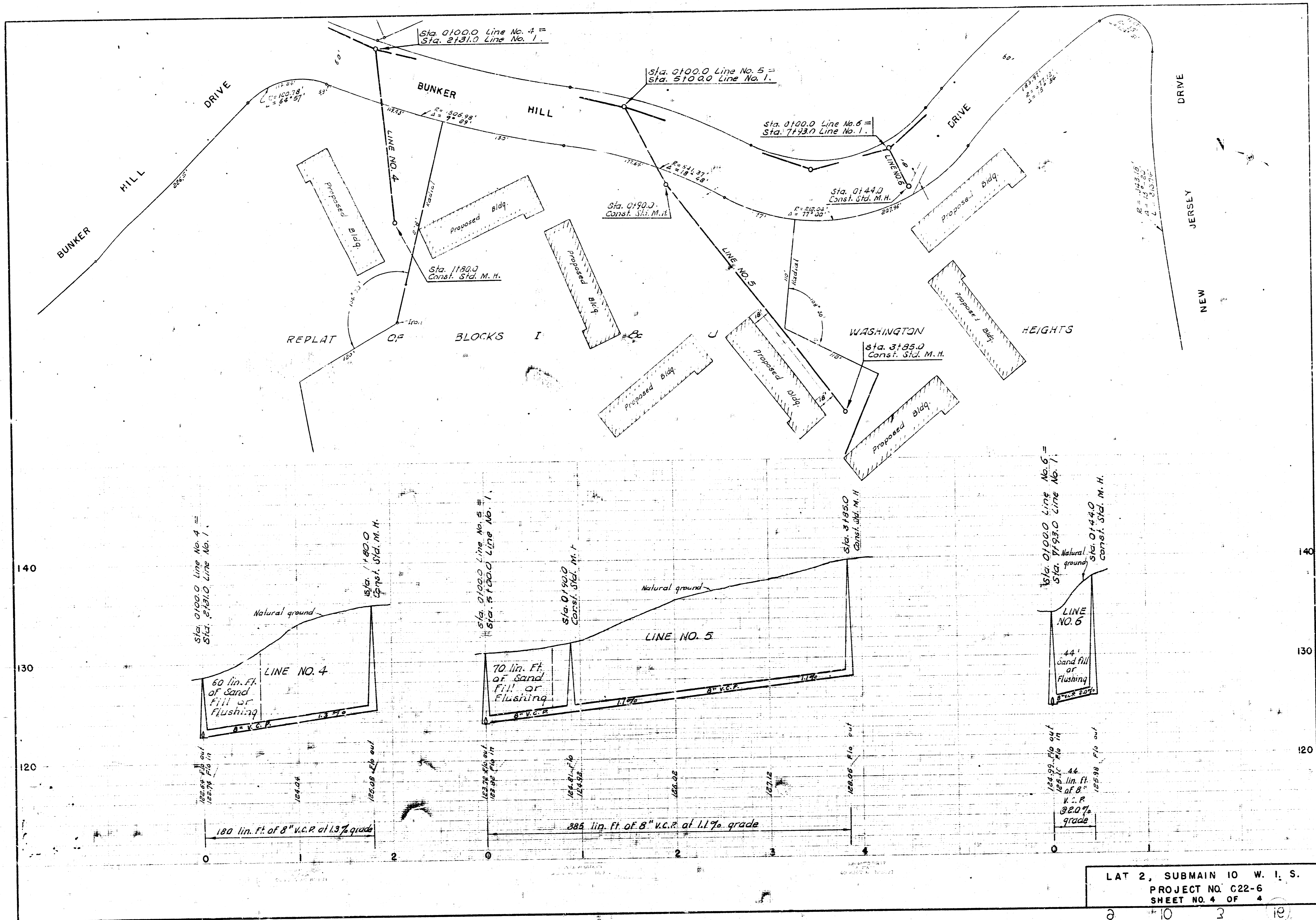
LAT. 2, SUBMAIN 10, W. I. S.
 CITY OF WICHITA, KANSAS
 B. E. SMITH CITY ENGINEER
 OCT. 1964 PROJECT NO. C22-6
 SHEET NO. 1 OF 4



LAT. 2, SUBMAIN 10, W. I. S.
 PROJECT NO. C22-6
 SHEET NO. 2 OF 4



LAT. 2 SUB. 10 W.I.S.
 PROJECT NO. C22-6
 SHEET NO. 3 OF 4



LAT 2, SUBMAIN 10 W. I. S.
 PROJECT NO. C22-6
 SHEET NO. 4 OF 4