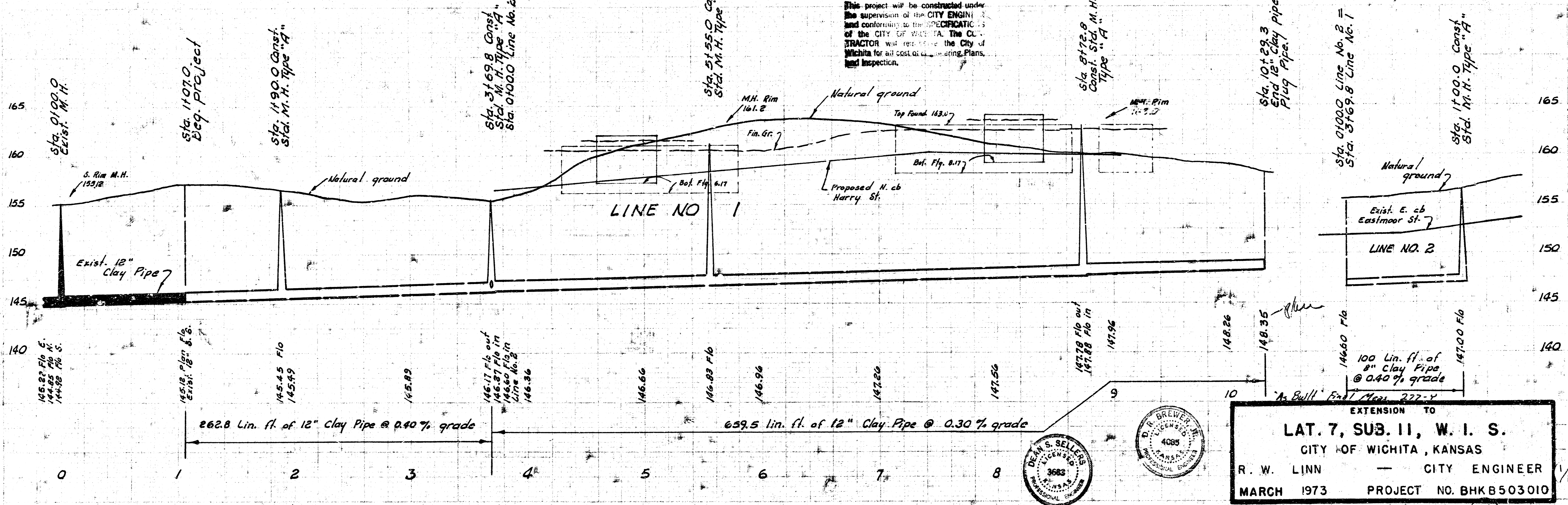
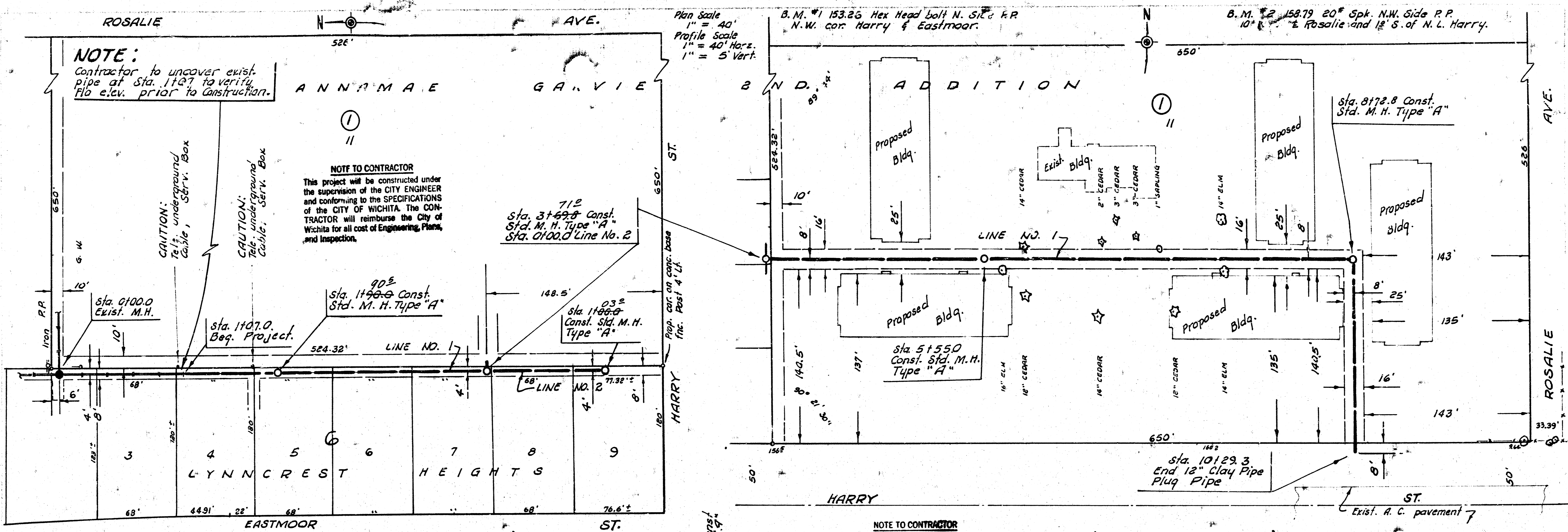


**NOTE:**  
Contractor to uncover exist pipe at Sta. 1107.0 to verify Flo elev. prior to construction.

**NOTE TO CONTRACTOR**  
This project will be constructed under the supervision of the CITY ENGINEER and conforming to the SPECIFICATIONS of the CITY OF WICHITA. The CONTRACTOR will reimburse the City of Wichita for all cost of Engineering, Plans, and Inspection.

**NOTE TO CONTRACTOR**  
This project will be constructed under the supervision of the CITY ENGINEER and conforming to the SPECIFICATIONS of the CITY OF WICHITA. The CONTRACTOR will reimburse the City of Wichita for all cost of Engineering, Plans, and Inspection.



EXTENSION TO  
**LAT. 7, SUB. 11, W. I. S.**  
CITY OF WICHITA, KANSAS  
R. W. LINN — CITY ENGINEER  
MARCH 1973 PROJECT NO. BHKB50310