

PLAN FOR
SUBMAIN 13, WAR INDUSTRIES SEWER

CITY OF WICHITA, KANSAS

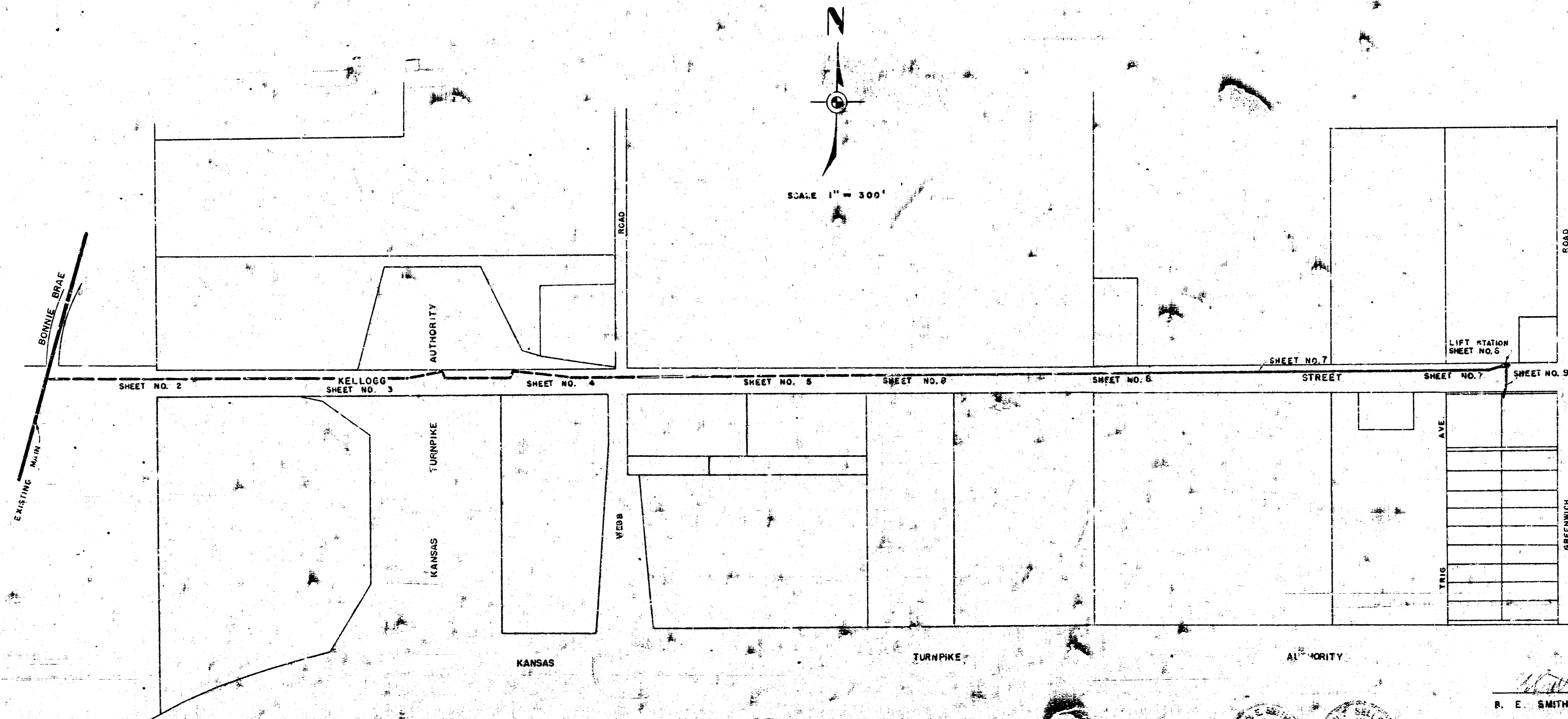
B. E. SMITH CITY ENGINEER

PROJECT NO. G 23-1

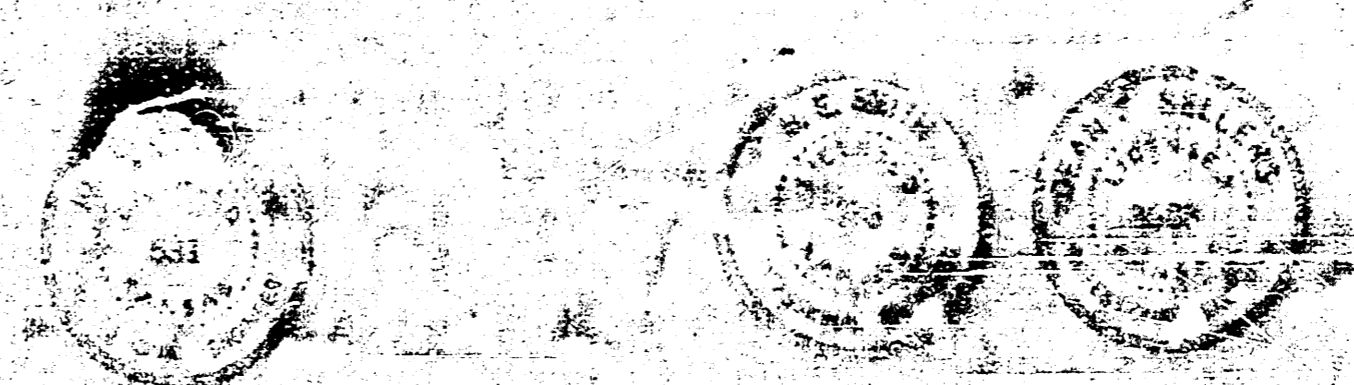
AND

LIFT STATION IN CONNECTION WITH SUBMAIN 13, WAR INDUSTRIES SEWER

PROJECT NO. G23-2



SURVEY BY A. R. G. S. BOOK NO. 02-11-79
DRAWN BY D. E. C.
CHECKED BY _____ DATE: _____



MAY 13, 1953
R. E. SMITH CITY ENGINEER

SUBMAIN 13, WAR INDUSTRIES SEWER
PROJECT NO. G 23-1
SHEET NO. 1 OF 9

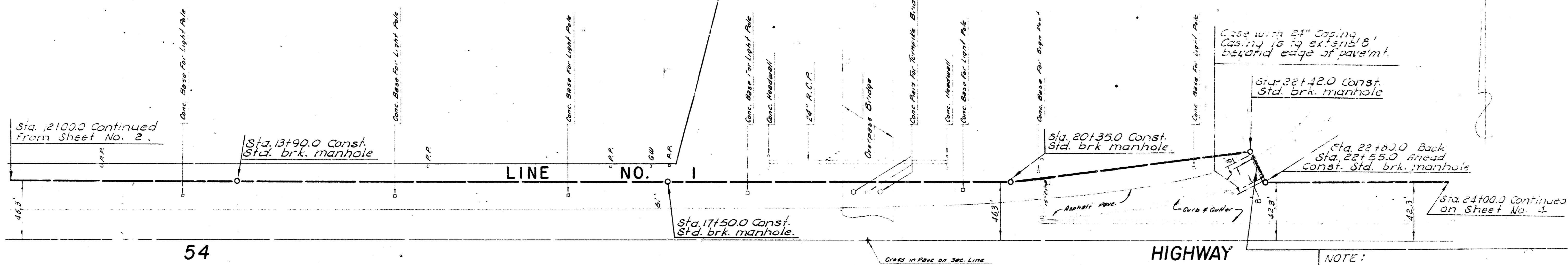
NOT

PLATTED

KANSAS

TURNPIKE

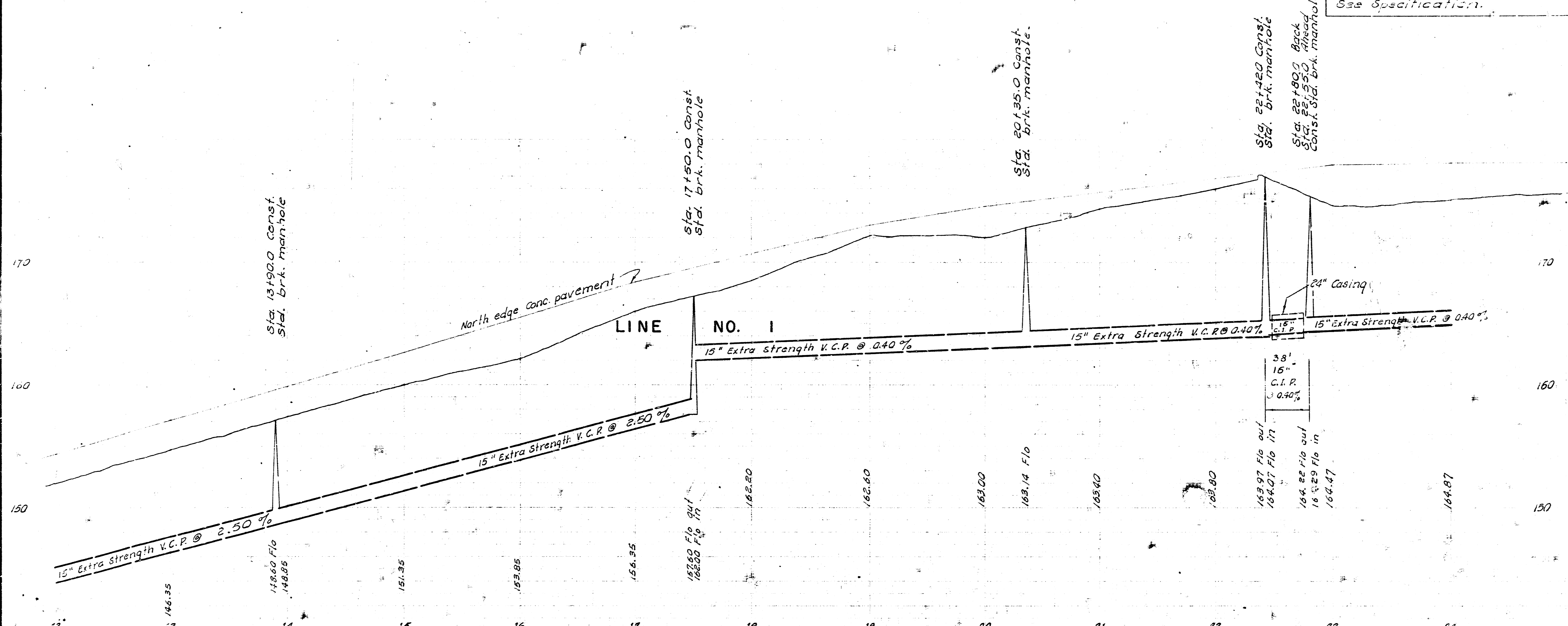
PROPERTY



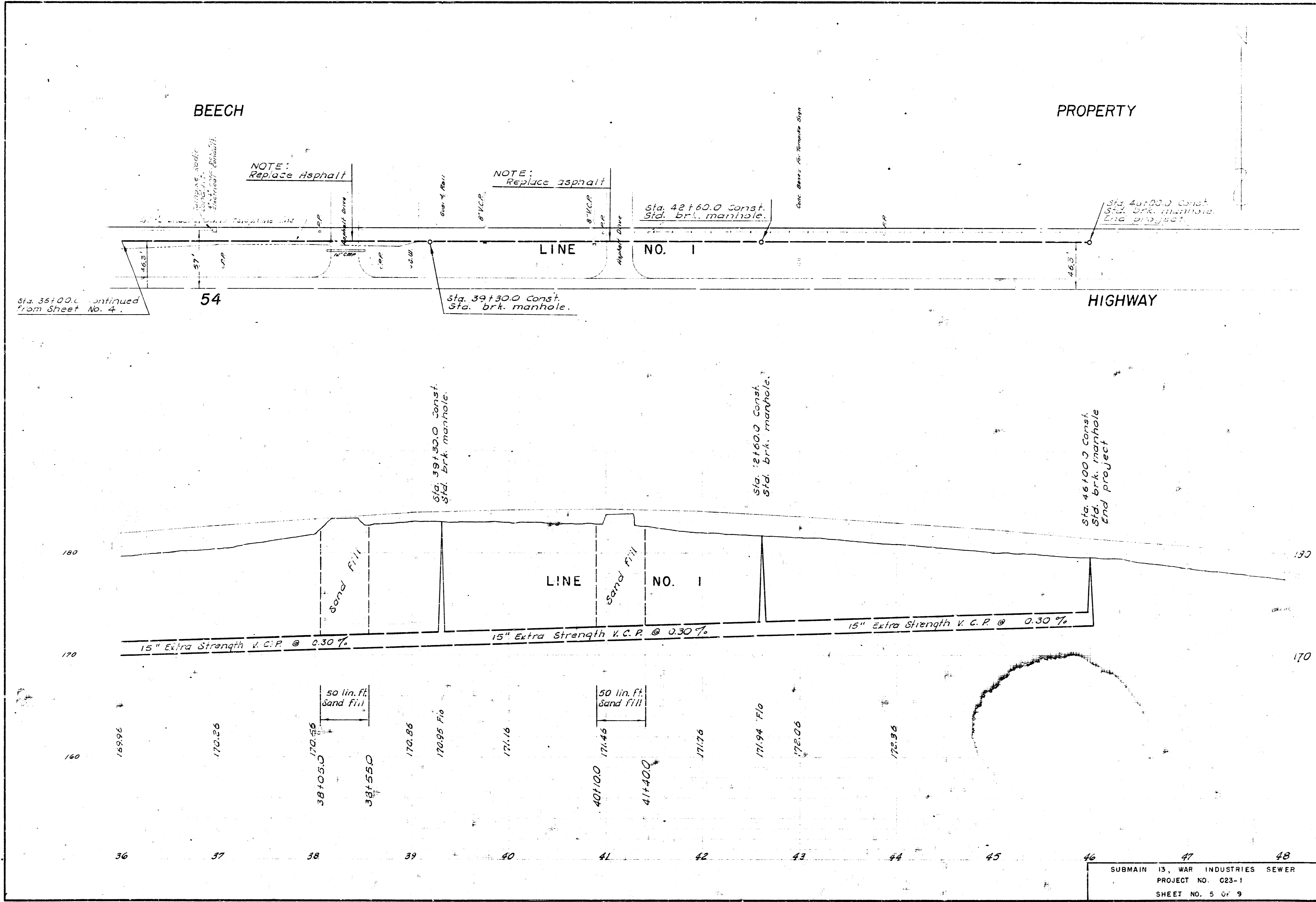
54

HIGHWAY

NOTE:
 16" C.I.P. to be placed under pavement by augering and sliding pipe into place. Augered hole to be closed with steel pipe. See Specification.



SUBMAIN 13, WAR INDUSTRIES SEWER
 PROJECT NO. C23-1
 SHEET NO. 3 OF 9



Sta. 36+00.0 continued from Sheet No. 4.

54

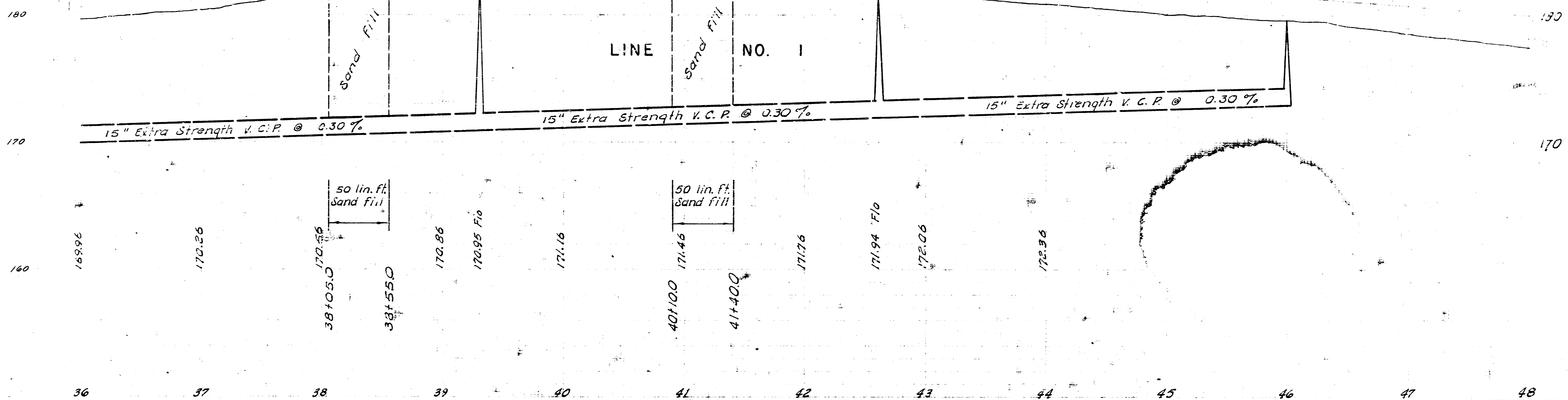
Sta. 39+30.0 Const. Sta. brk. manhole.

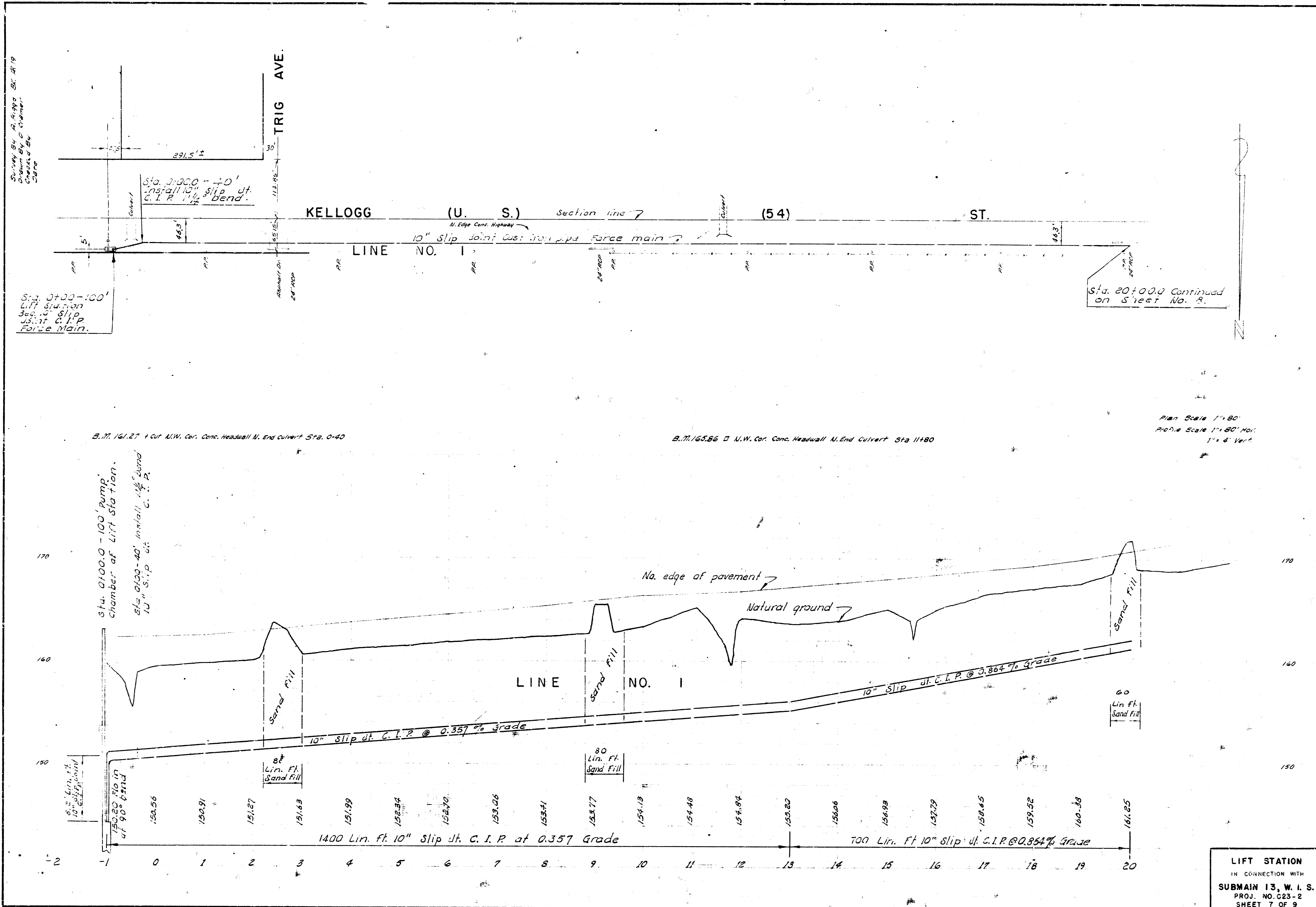
LINE NO. 1

HIGHWAY

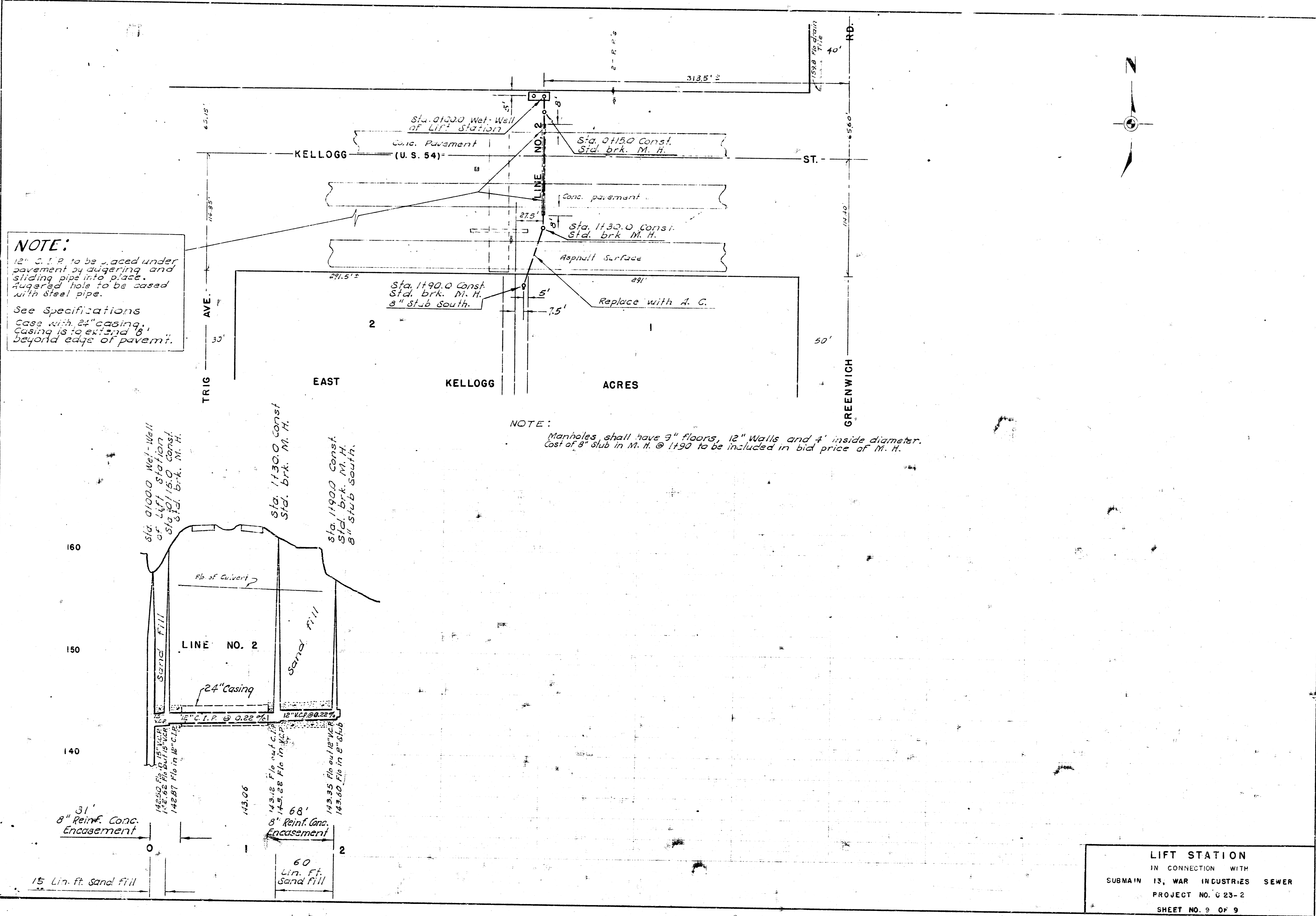
LINE NO. 1

15" Extra Strength V.C.P. @ 0.30% 15" Extra Strength V.C.P. @ 0.30% 15" Extra Strength V.C.P. @ 0.30%





LIFT STATION
 IN CONNECTION WITH
SUBMAIN 13, W. I. S.
 PROJ. NO. C23-2
 SHEET 7 OF 9



NOTE:
 12" C. I. P. to be placed under pavement by augering and sliding pipe into place. Augered hole to be cased with steel pipe.
 See Specifications
 Case with 24" casing; casing is to extend 6' beyond edge of pavem.

NOTE:
 Manholes shall have 3" floors, 12" walls and 4' inside diameter. Cost of 8" slab in M. H. @ 1+90 to be included in bid price of M. H.

LIFT STATION
 IN CONNECTION WITH
 SUBMAIN 13, WAR INDUSTRIES SEWER
 PROJECT NO. 623-2
 SHEET NO. 9 OF 9