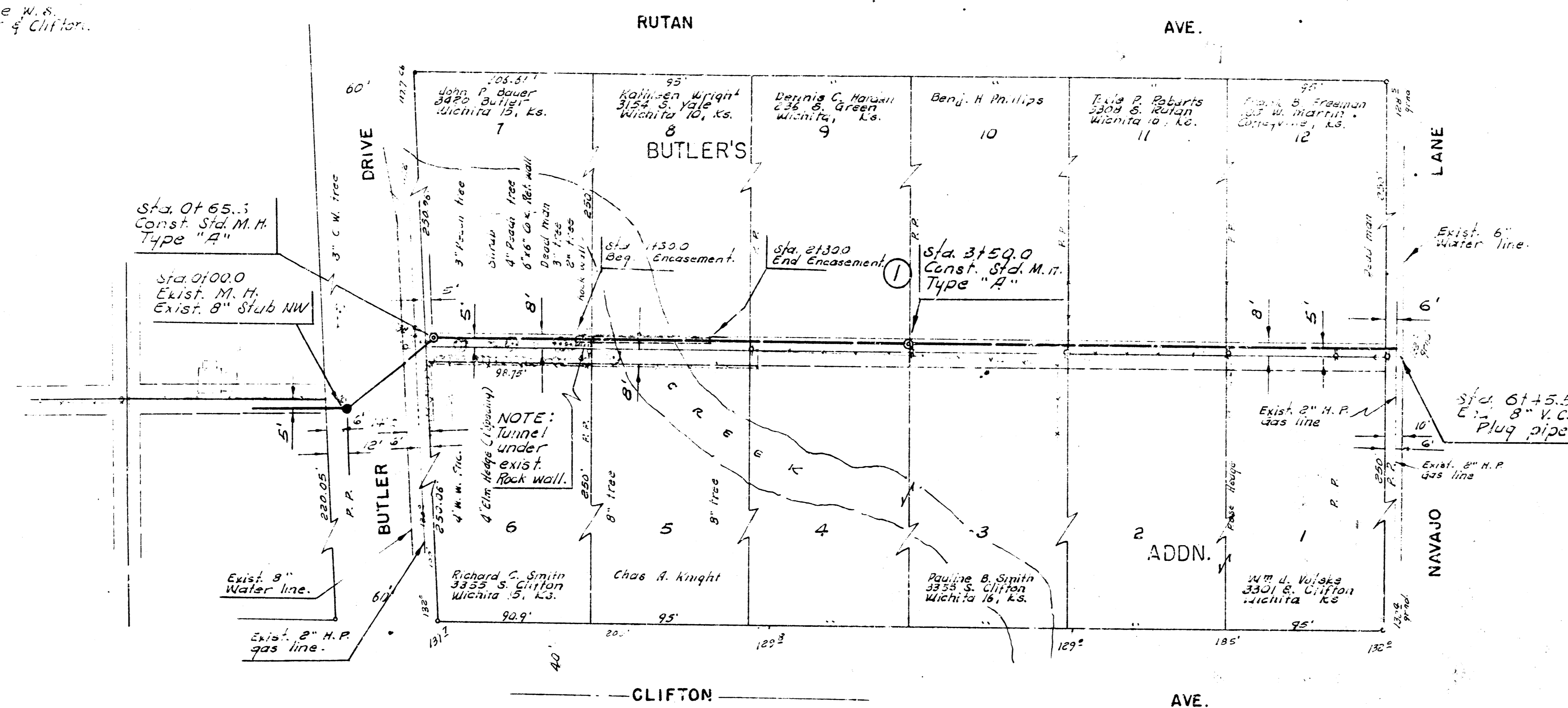


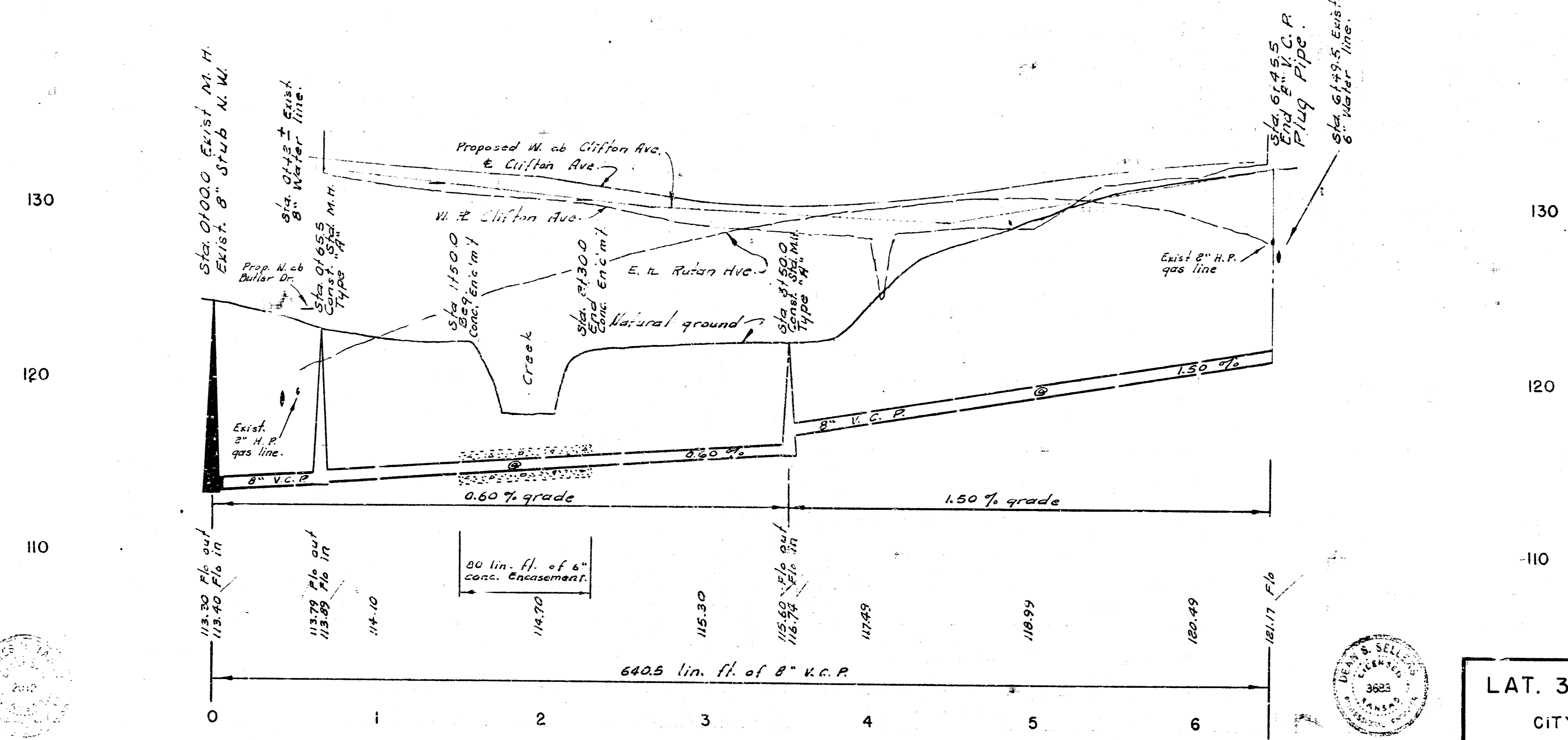
F.M. 31.81 & R. Spivey W.P.  
 2' Side N.W. Corner of Clifton.



**NOTE TO CONTRACTOR:**  
 This project is to be constructed with Lot 1, Submain W.I.S. project No. C23-25.

B.M. 330.72 R.R. spike N.E. corner R.R.  
 W.S. Clifton 30' S. of Manjuro 11250'

Plan Scale 1" = 40'  
 Profile Scale 1" = 4' Vert.



LAT. 3, SUBMAIN 14, W. I. S.  
 CITY OF WICHITA, KANSAS  
 B. F. SMITH CITY ENGINEER  
 JUNE 1969 PROJECT NO. C24-39