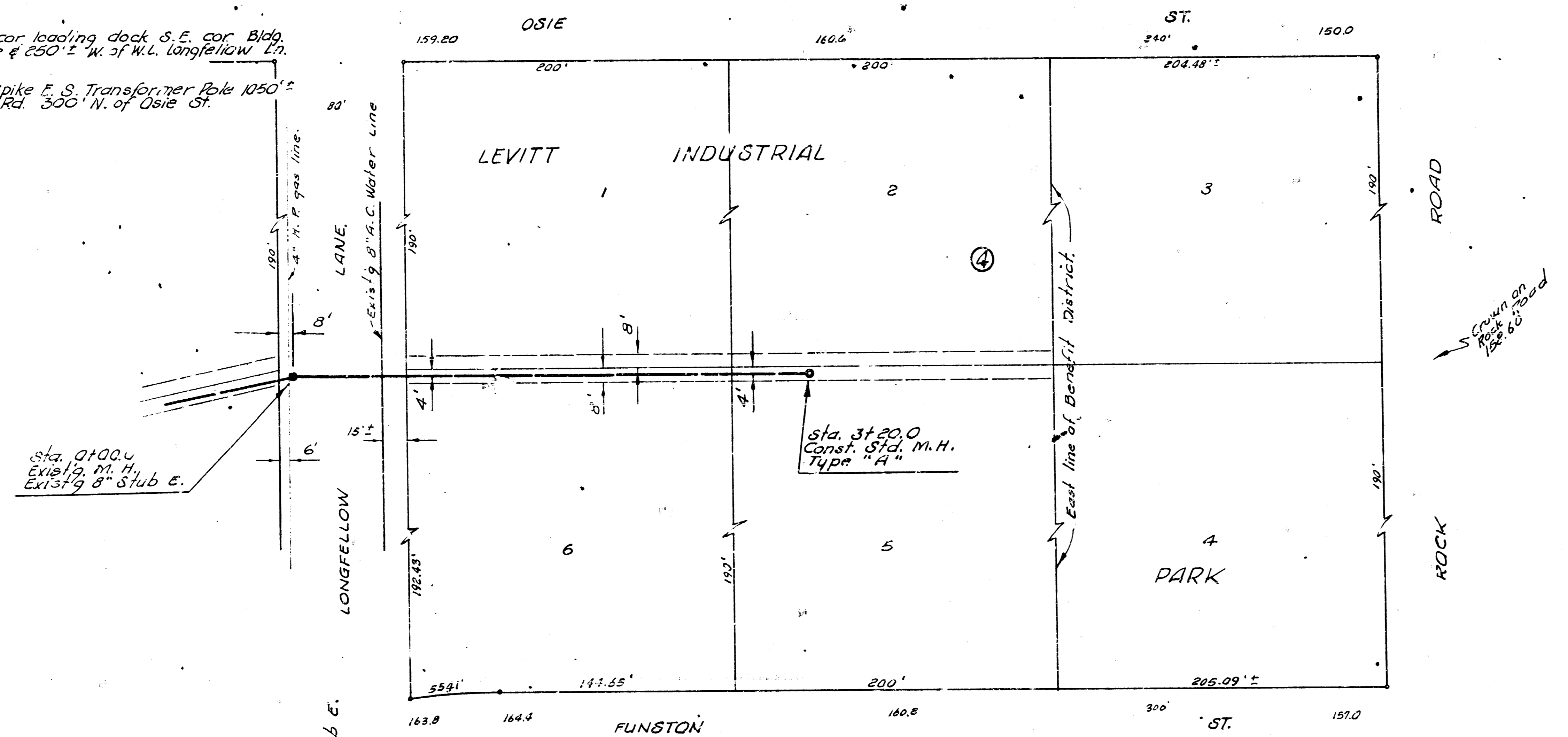


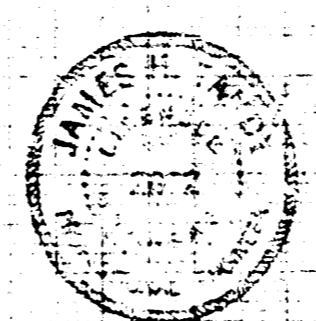
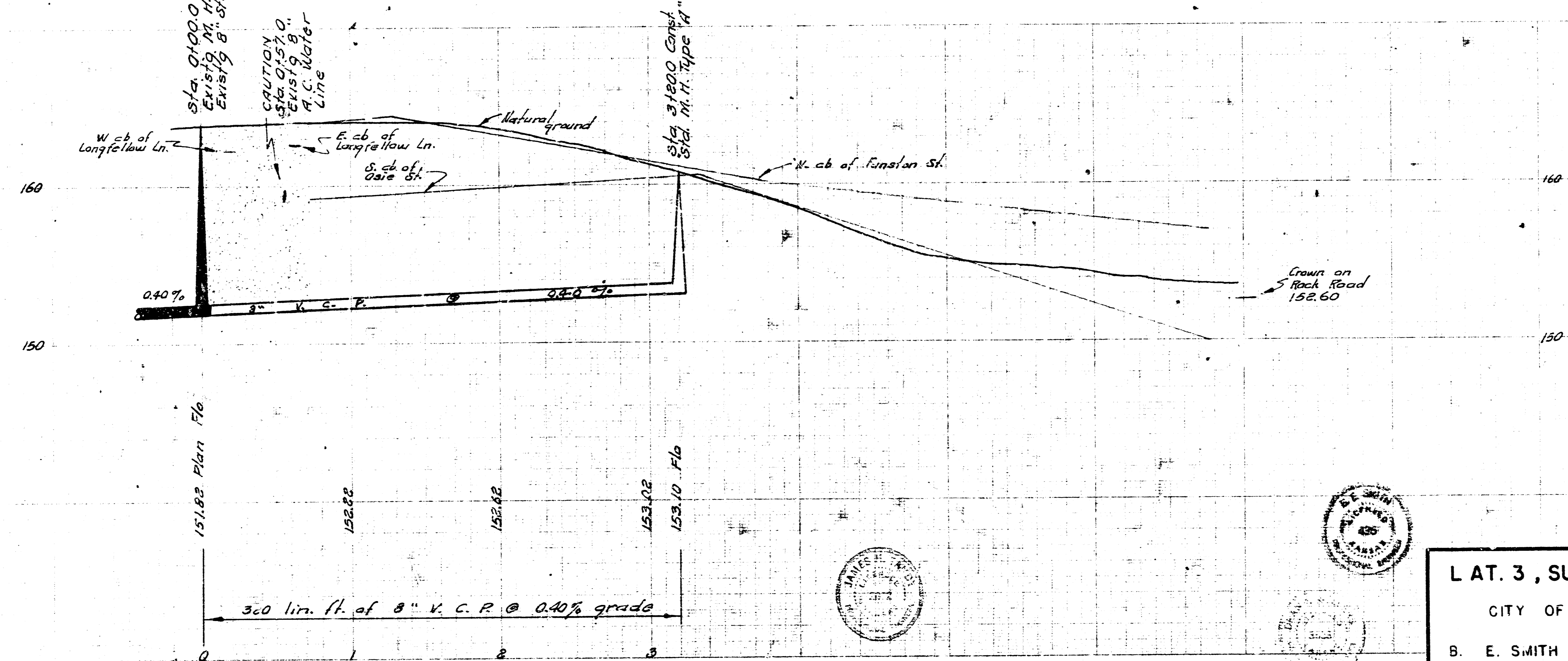
B. M. 152.56 S.E. cor leading dock S.E. cor Bldg.  
100' N. of Osie & 250' E. W. of W.L. Longfellow Ln.

b. m. 150.74 60" Spike E. S. Transformer Pole 1050' E.  
W. of Rock Rd. 300' N. of Osie St.

Drawn by G. Y. Bl. No. 229-1  
 Checked by



Plan Scale 1" = 10'  
 Profile Scale 1" = 10' Vert.



L AT. 3, SUBMAIN 16, W. I. S.  
 CITY OF WICHITA, KANSAS  
 B. E. SMITH CITY ENGINEER  
 OCT. 1968 PROJECT NO. C26-66