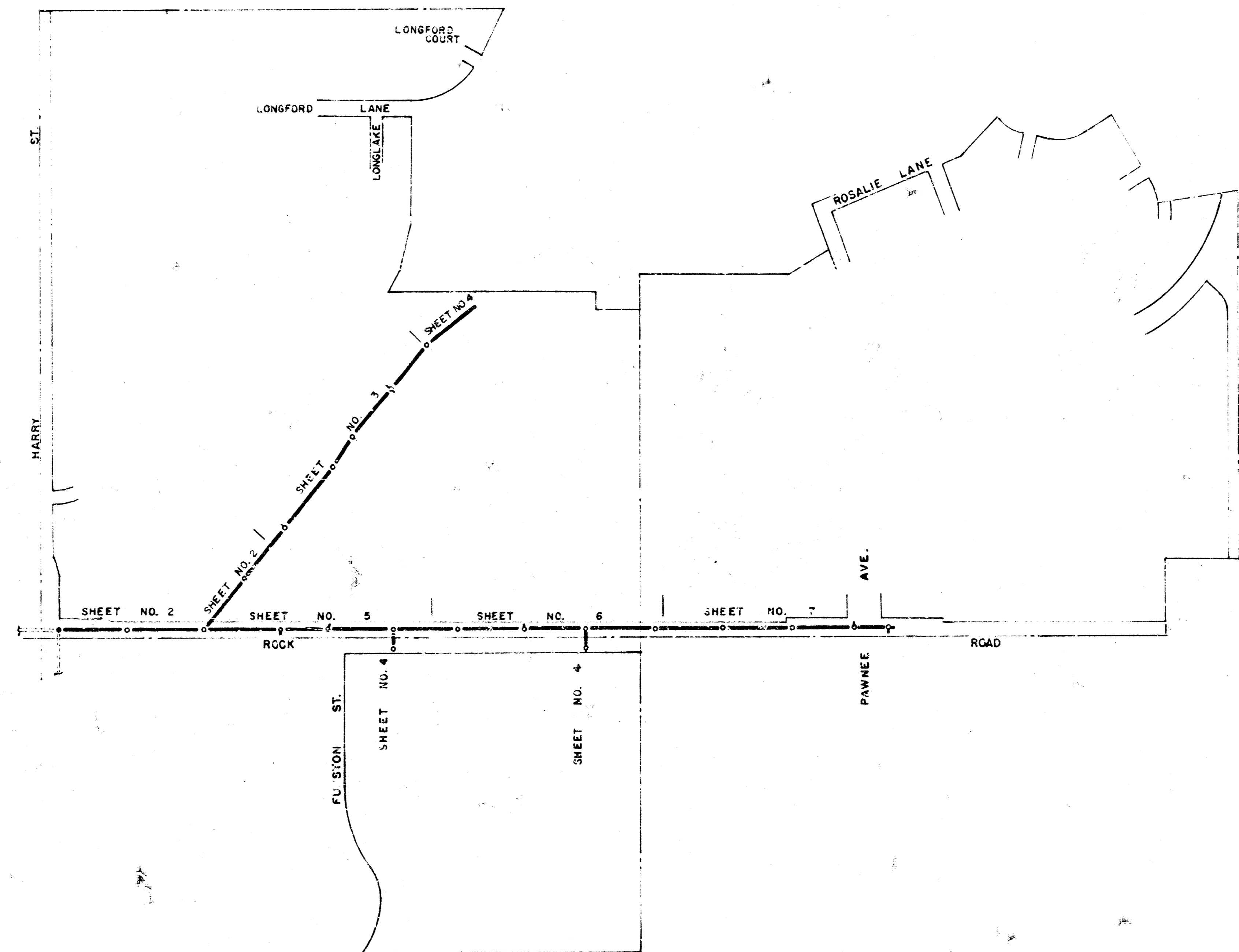
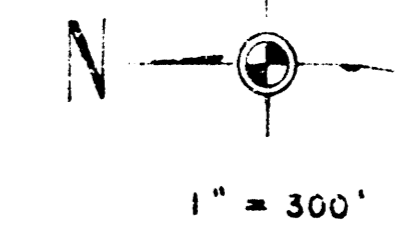


MAIN 17, WAR INDUSTRIES SEWER  
CITY OF WICHITA, KANSAS  
R. W. LINN - CITY ENGINEER  
JULY 1973, PROJECT NO. DBKM 573034

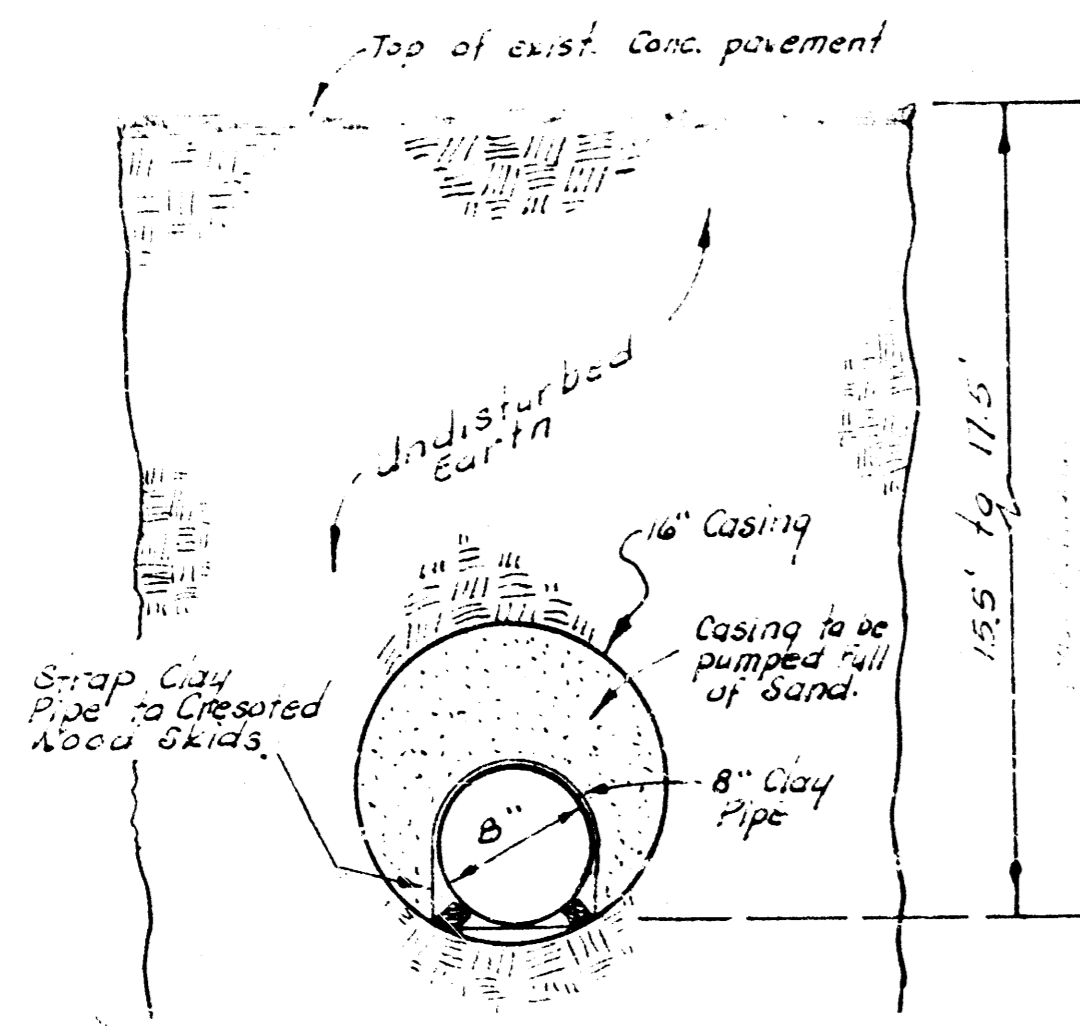
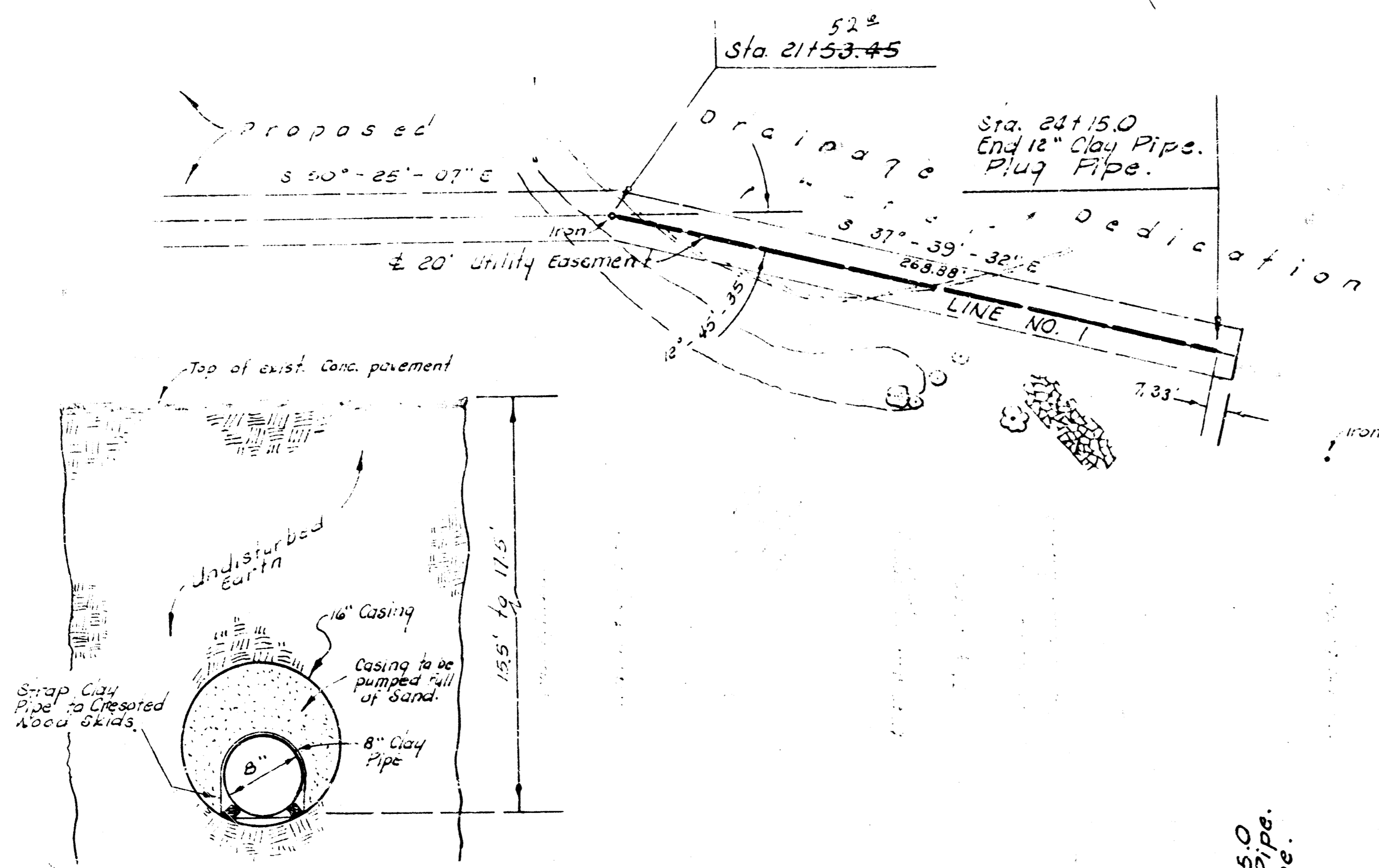


*As Built Final Meas. 280-8*  
MAIN 17, WAR INDUSTRIES SEWER  
PROJECT NO. DBKM 573034



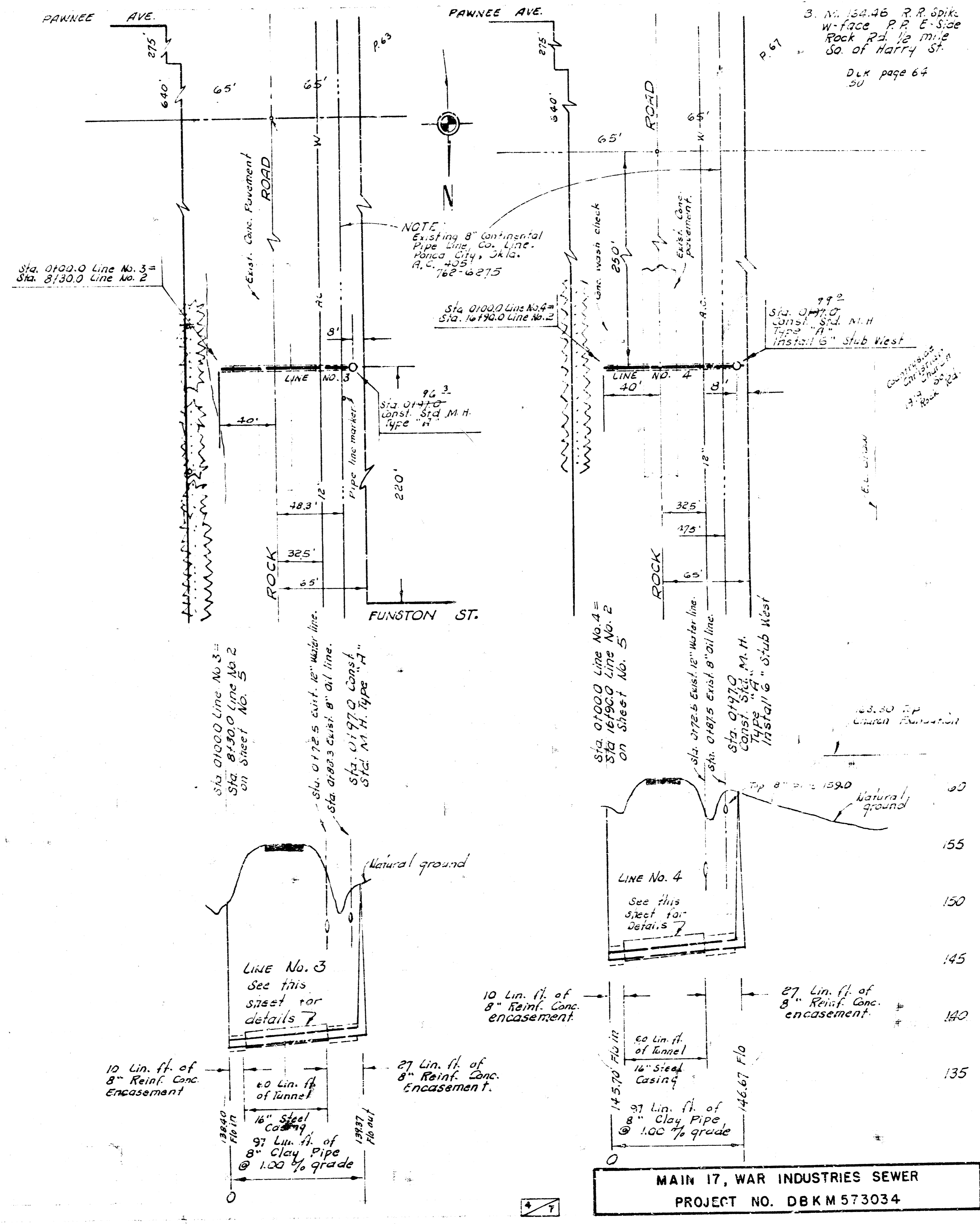
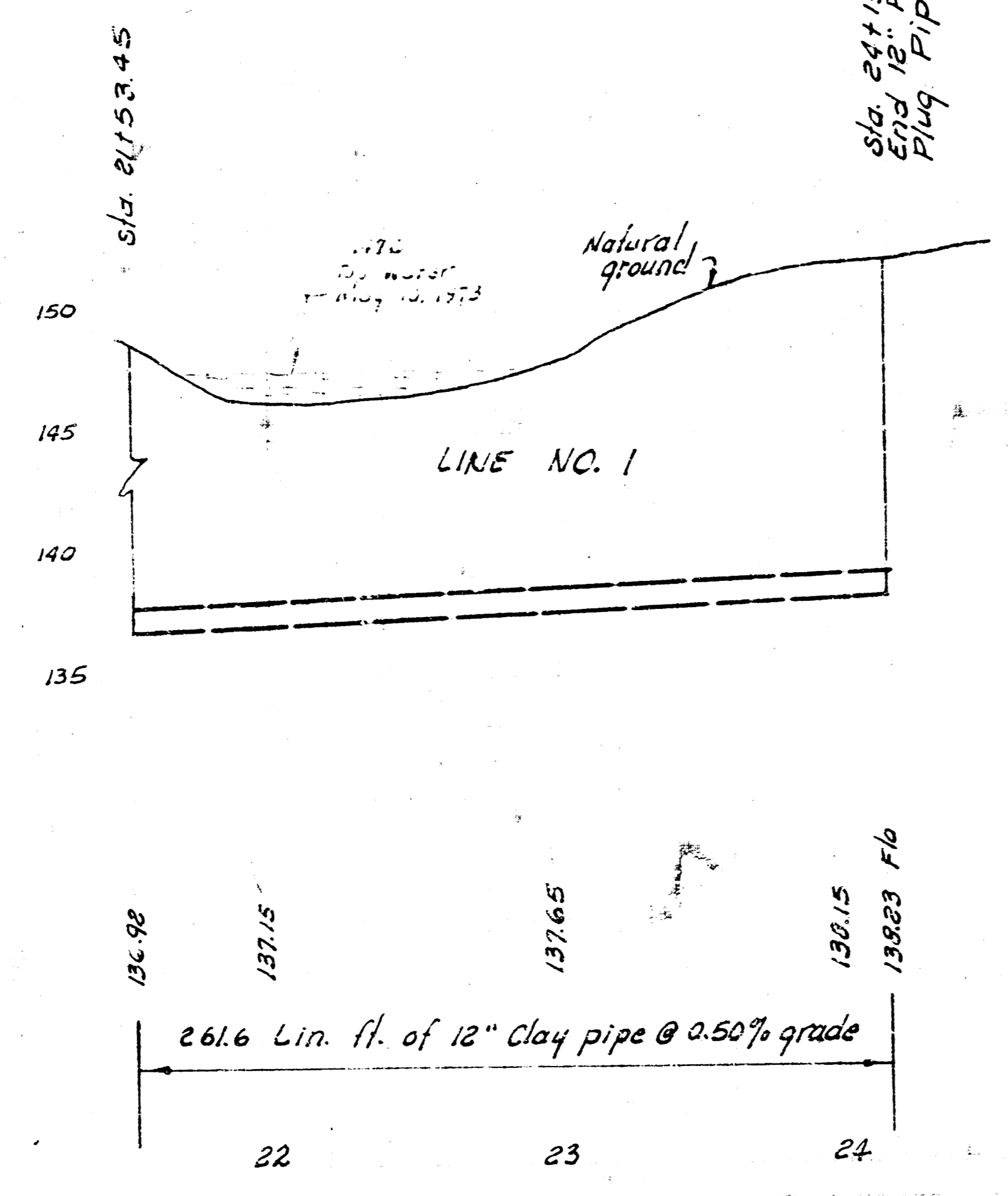


N. 1/4 Sec 32, T4N R7S, R2 E.



TYPICAL SECTION  
Tunnel for  
LINES NO. 3 and 4  
No Scale

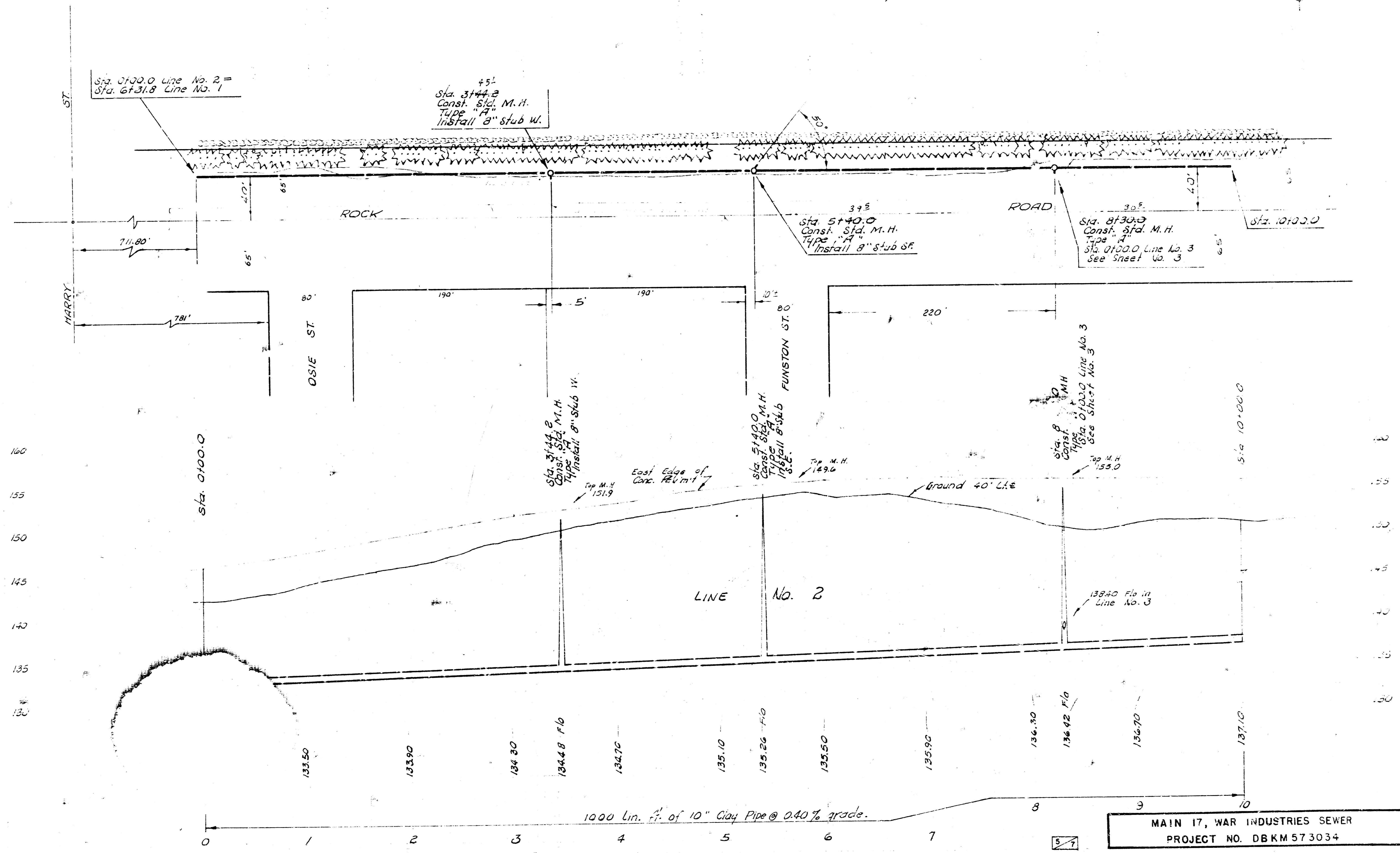
NOTE:  
The bid price of Lin. ft.  
of casing shall include  
the dewatering, wood skids,  
strips and the pumping  
of sand.



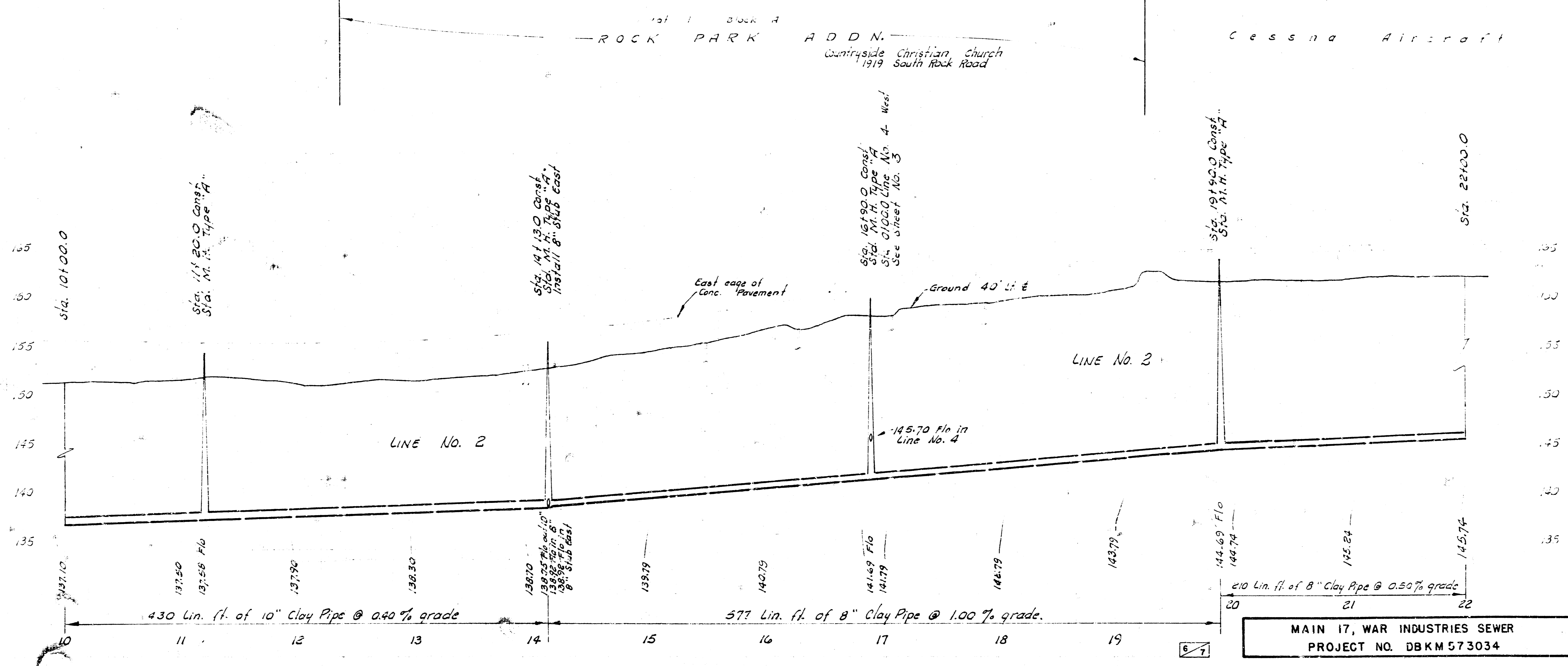
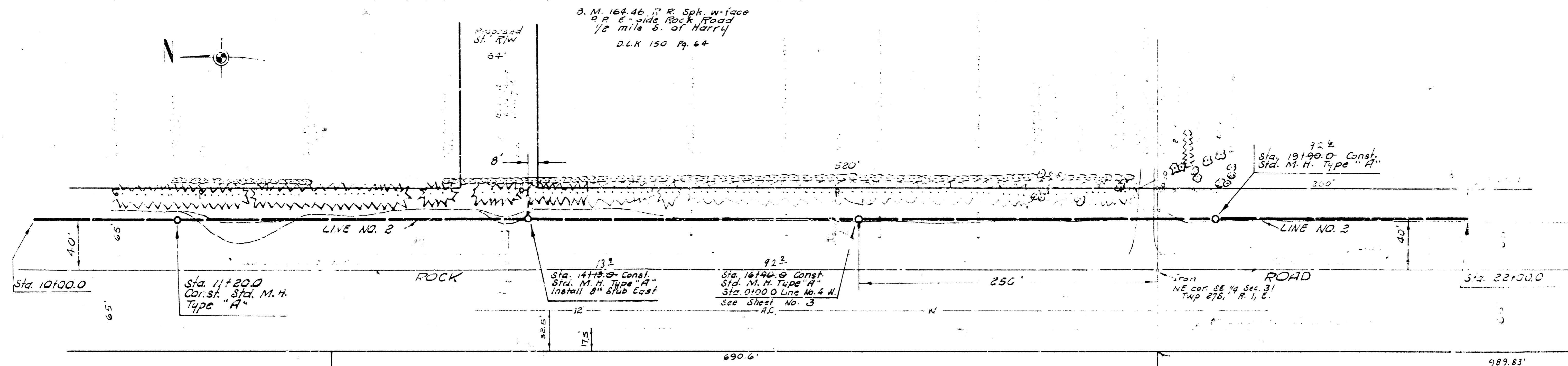
3. N. 1/4 Sec 32, T4N R7S, R2 E.  
W-7200 P.P. 6-Size  
Rock 7' x 10' x 12'  
So. of Harry St.  
DLX page 64  
30

MAIN 17, WAR INDUSTRIES SEWER  
PROJECT NO. DBKM 573034

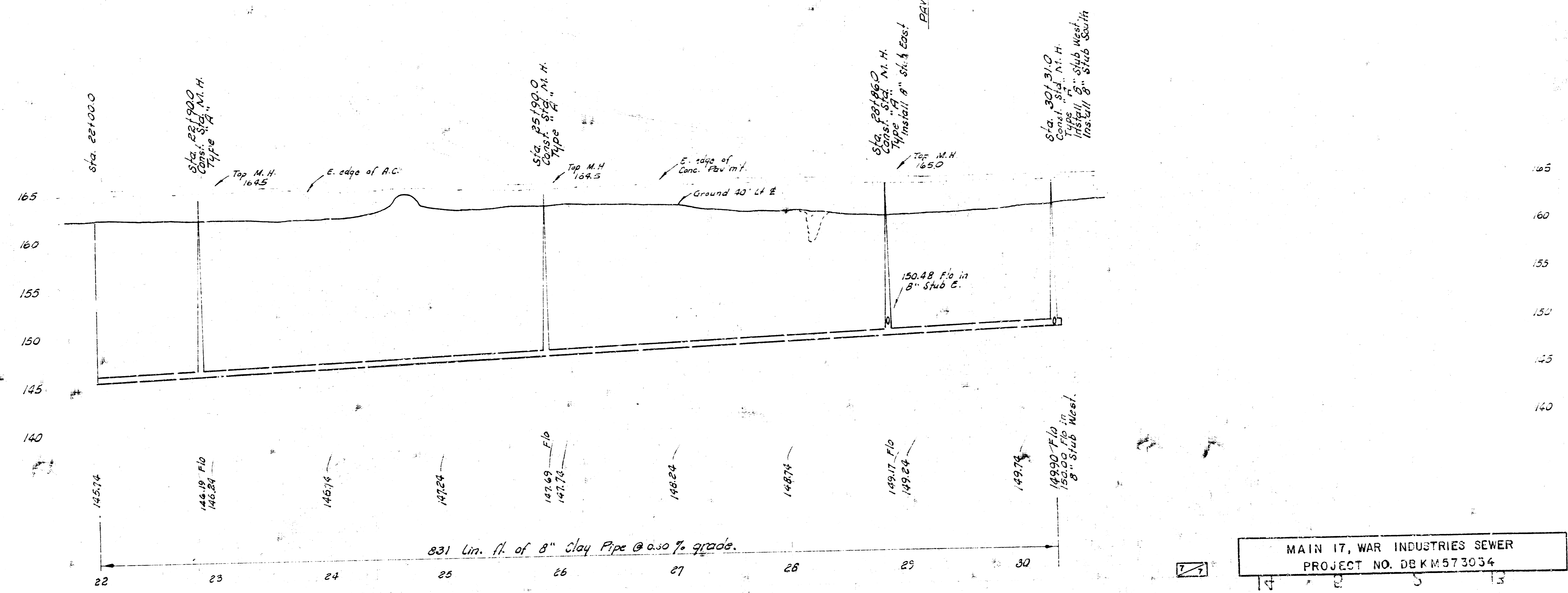
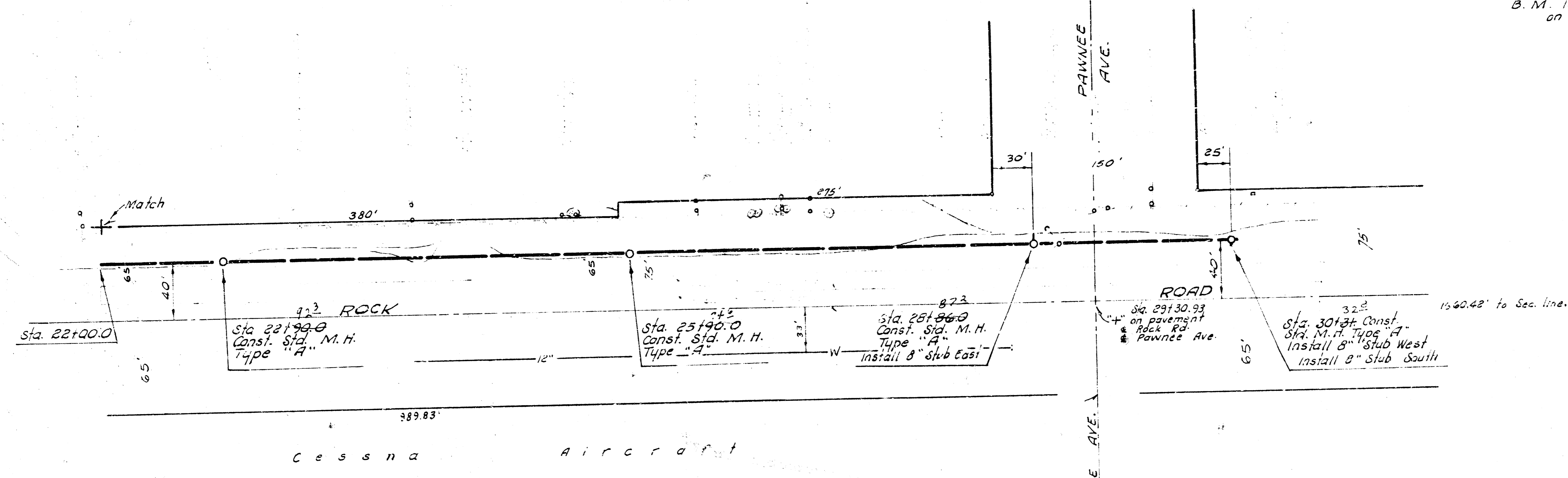
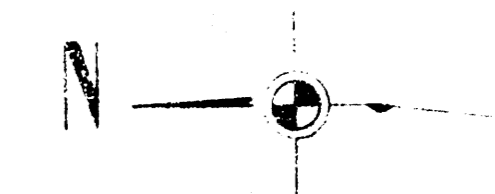
B. M. 154.49 R.R. Spk. W-face P.P. C.L. Rock Rd  
S. L. Funston extended.



MAIN 17, WAR INDUSTRIES SEWER  
PROJECT NO. DBKM 573034



B. M. 165.71 "x" on ctr. Pawnee west  
on ctr. Rock Road N-S



MAIN 17, WAR INDUSTRIES SEWER  
PROJECT NO. DB KM 573034