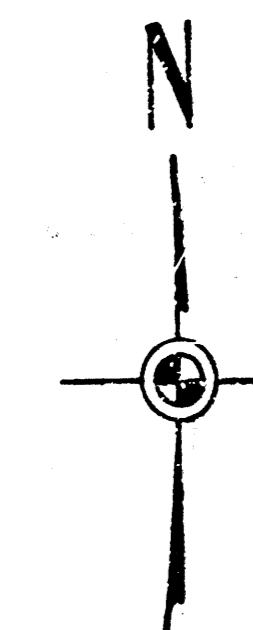
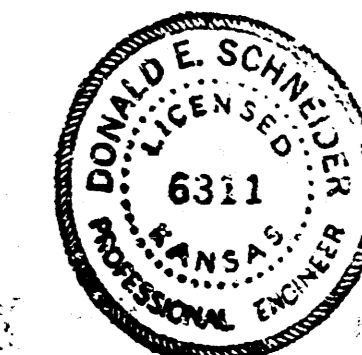
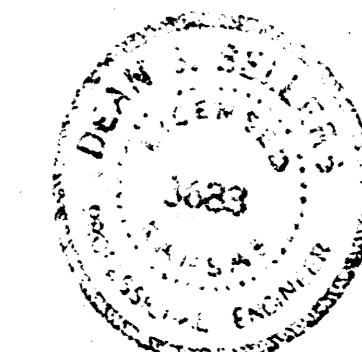
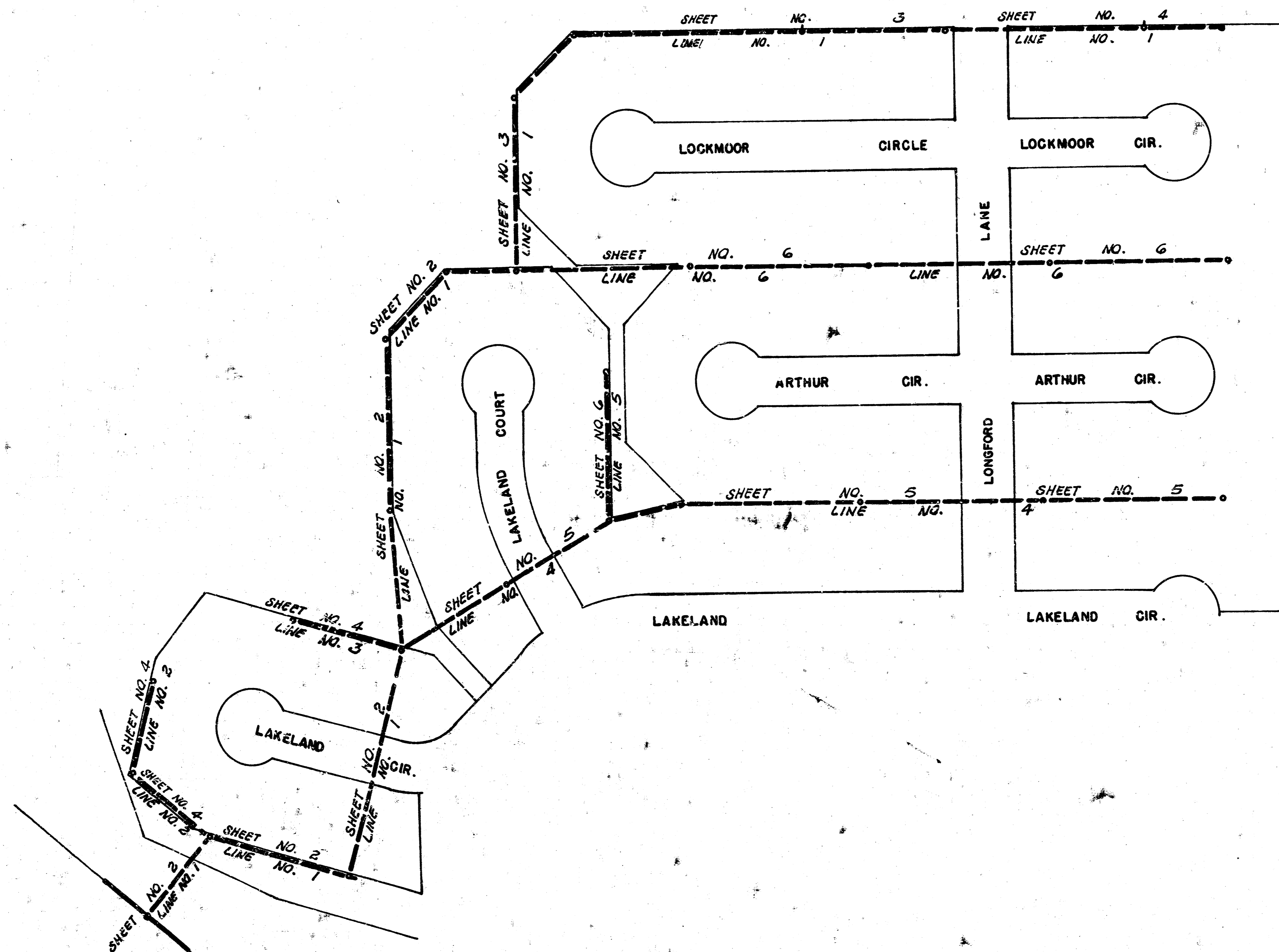


LAT. 10, MAIN 17, WAR INDUSTRIES SEWER
 CITY OF WICHITA, KANSAS
 R. W. LINN - CITY ENGINEER
 SEPT. 1973, PROJECT NO. DBKM 573043



1" = 100'



"As Built" final Meas. 279-4

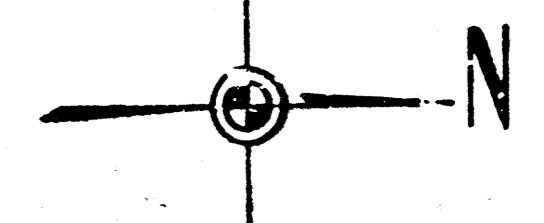
LAT. 10, MAIN 17, WAR INDUSTRIES SEWER
 PROJECT NO. DBKL573043



J. R. W.
84

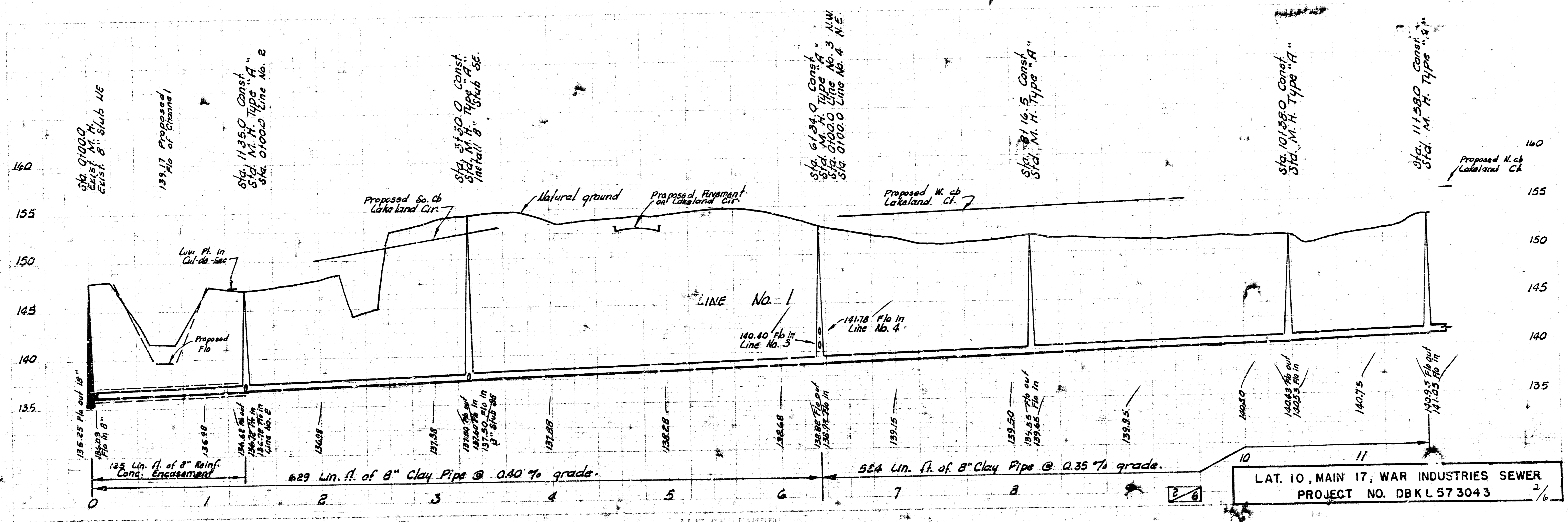
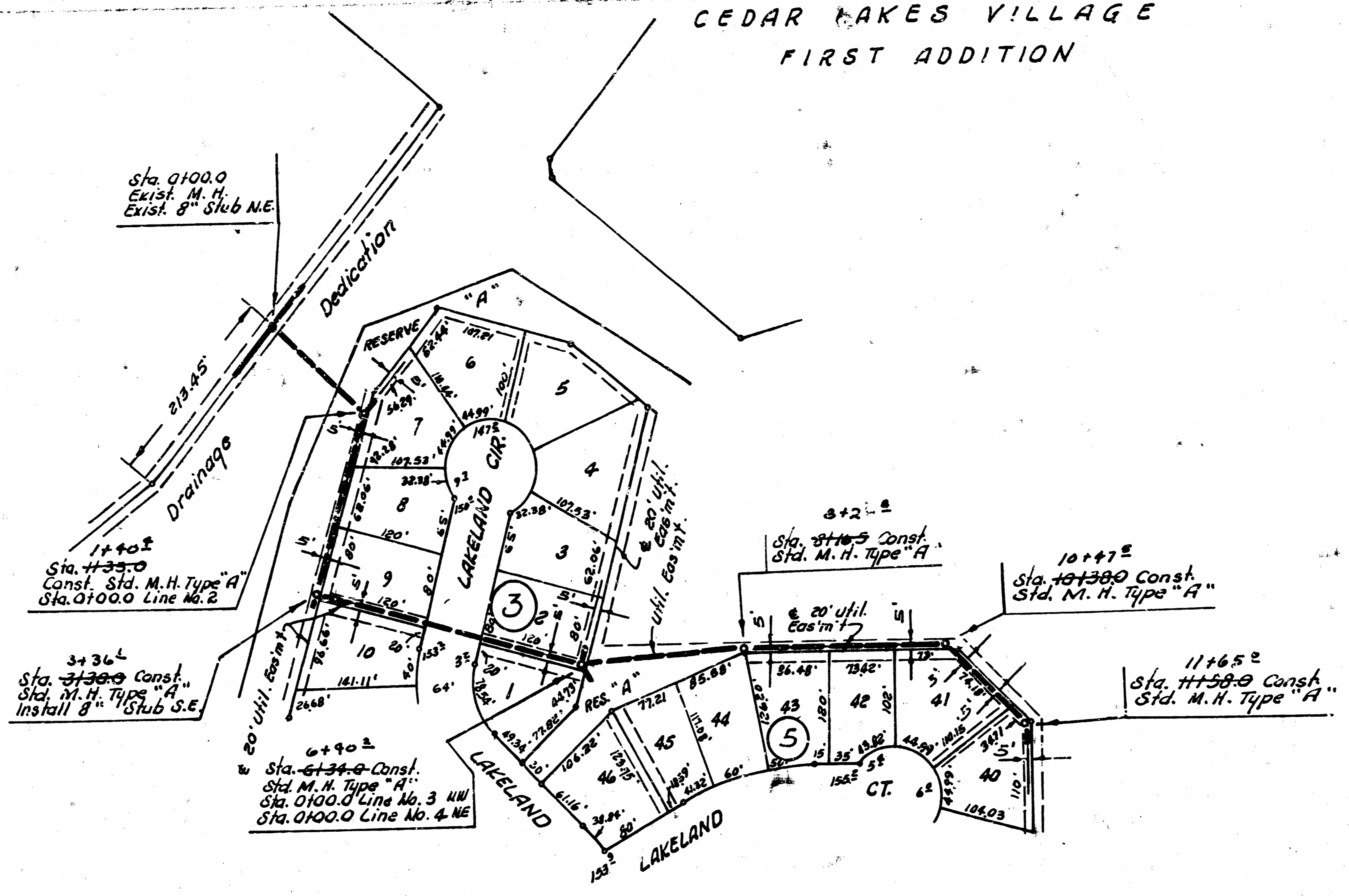
- B. M. #1 City Std. 42" W. 4' 48" So. of 1/4 Sec. cor. 1/4 mi. E. of Rock Rd. & Harry 161.824
- B. M. #2 "T" on NW cor. N. Handrail R.C.B.C. on Harry 238' E. of E. Rock Rd. 145.41
- B. M. #3 "a" cut NW. cor. N. Headwall 85' W. of W.L. Langford Lane So. on Harry St 159.08
- B. M. #4 Top steel T-Fix. Post 38' N. of N.L. Langford Lane & E.L. Cedar Lakes Adn. 164.53
- B. M. #5 "a" cut NW. cor. N. wing wall on Dam app. 130' S. of Lakeland Cir. 153.475

**CEDAR LAKES VILLAGE
FIRST ADDITION**

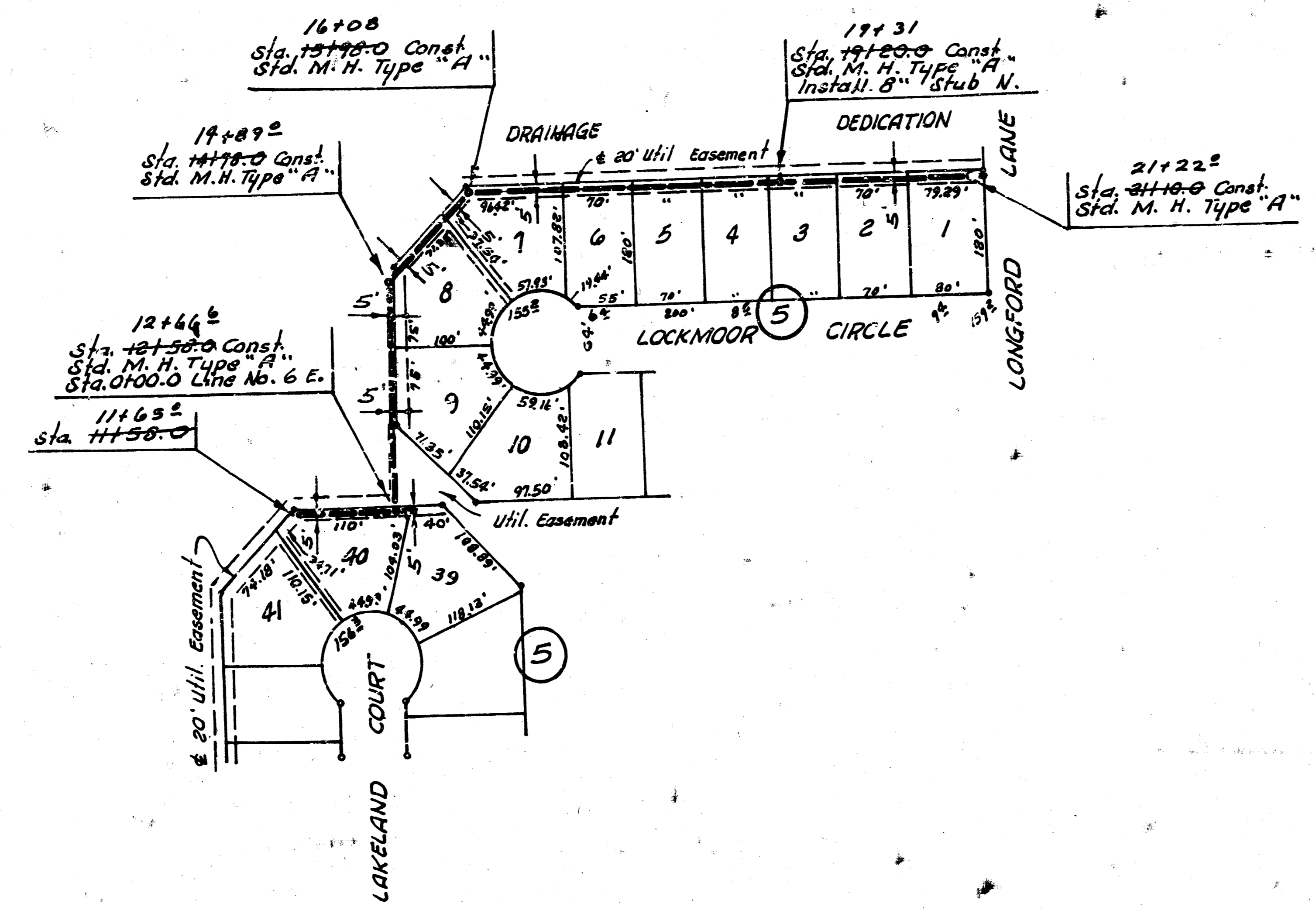
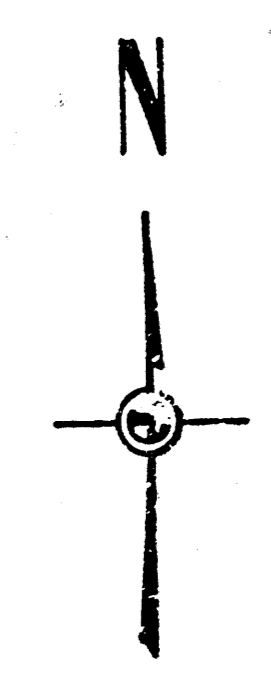


Plan scale 1" = 100'
Profile scale 1" = 40' Horiz
1" = 5' Vert.

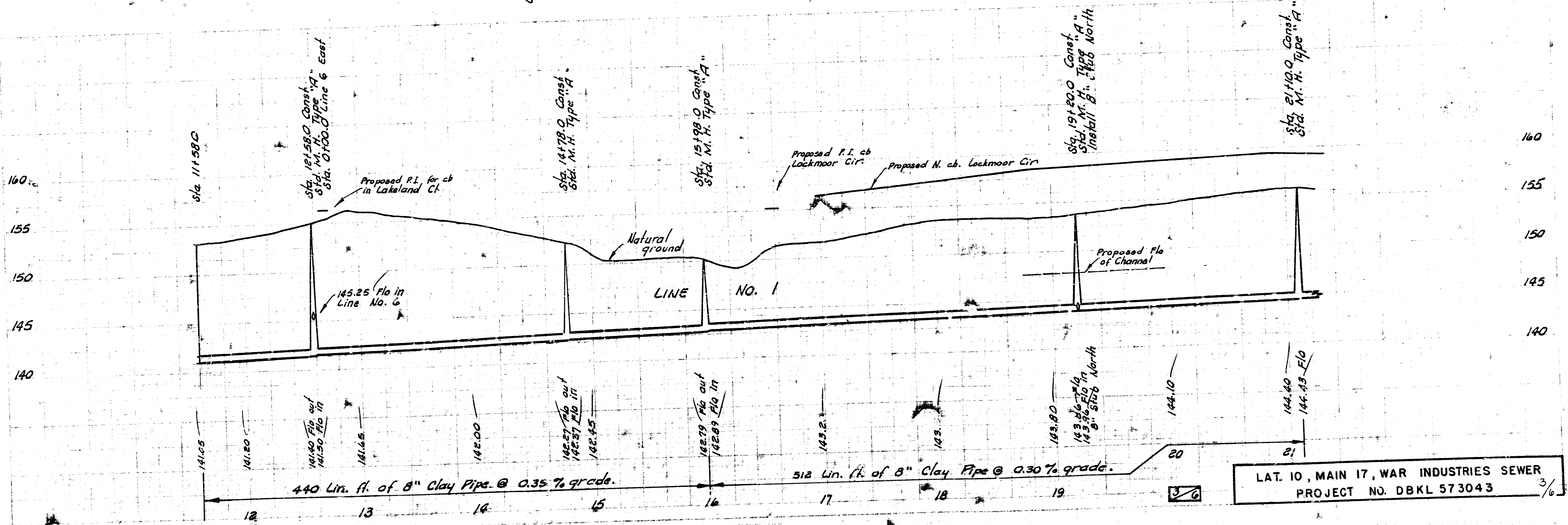
• Irons set



CEDAR LAKES VILLAGE
FIRST ADDITION

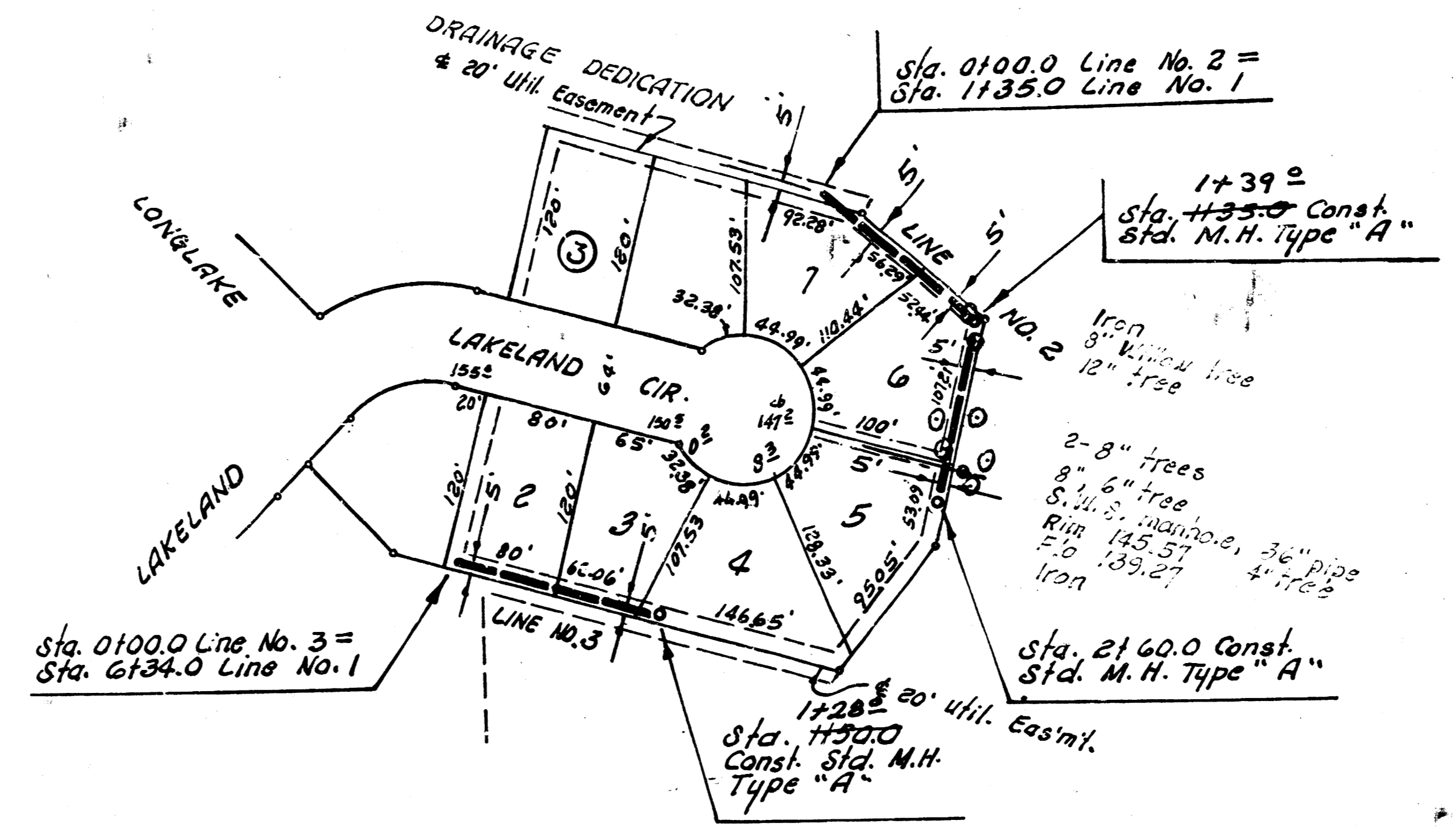
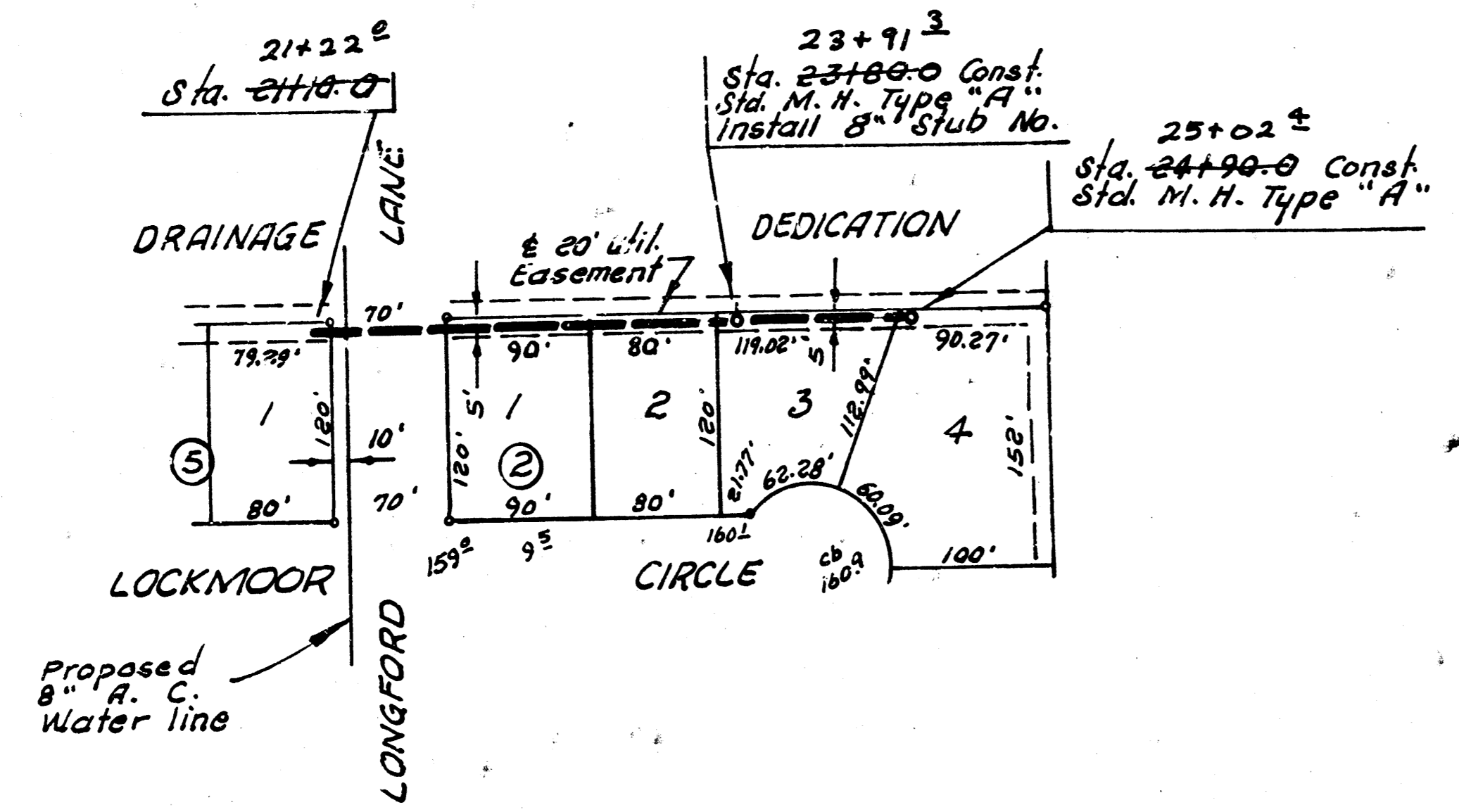
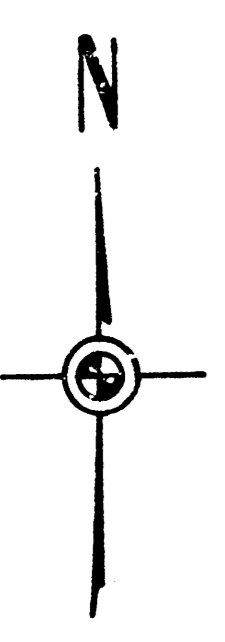


Pg. 12



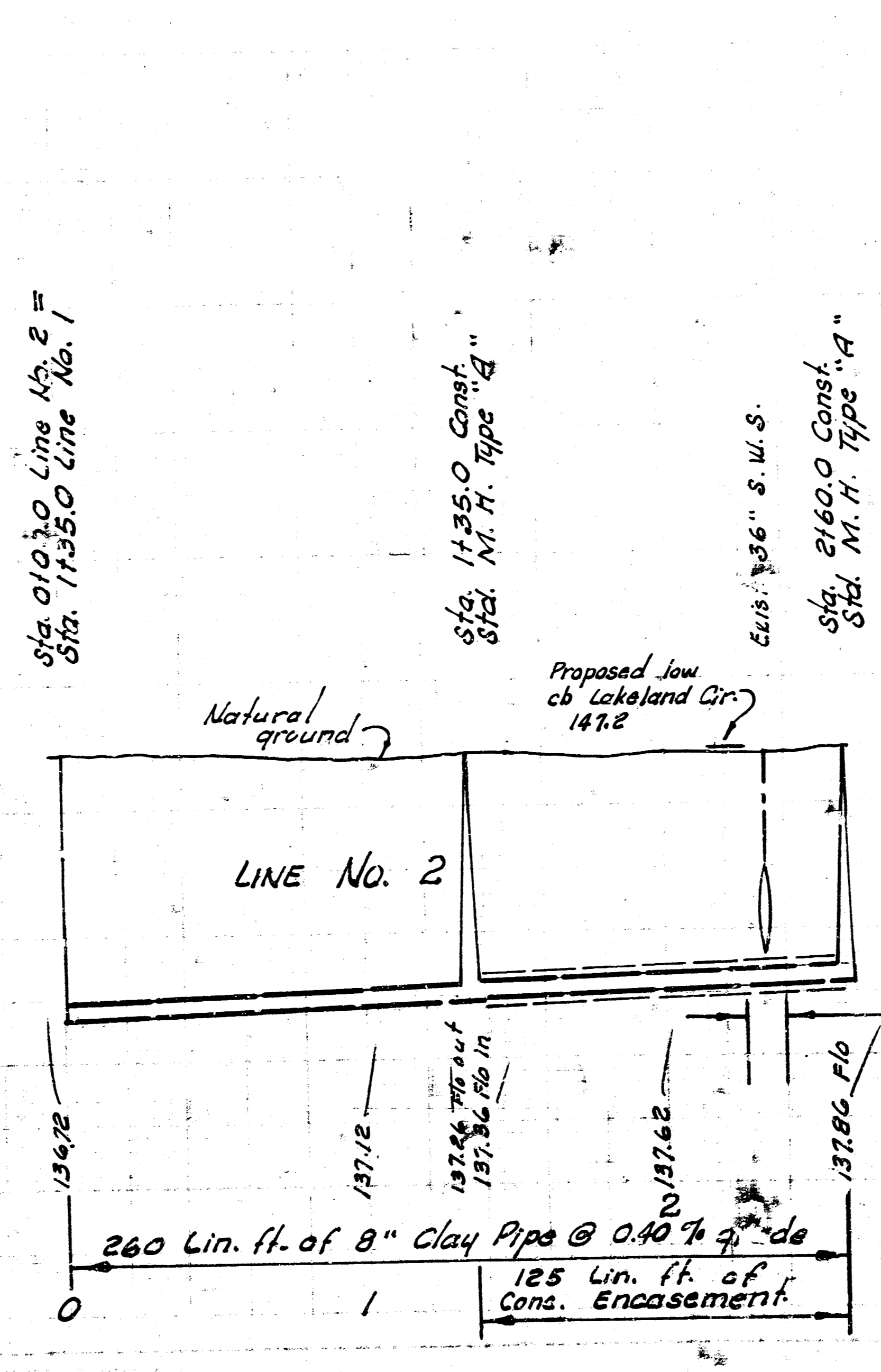
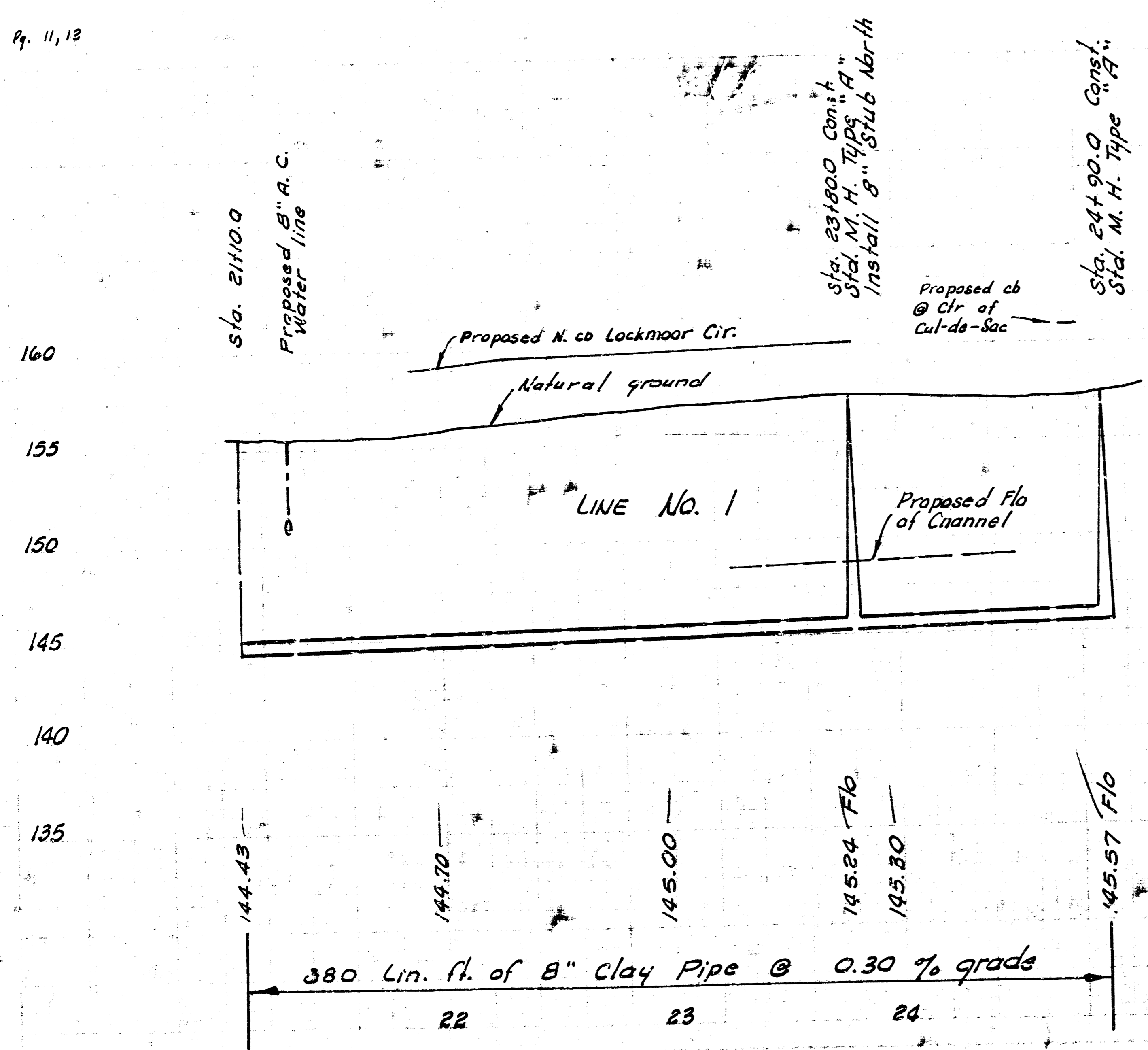
LAT. 10, MAIN 17, WAR INDUSTRIES SEWER
PROJECT NO. DBKL 573043 3/6

CEDAR LAKE VILLAGE
FIRST ADDITION

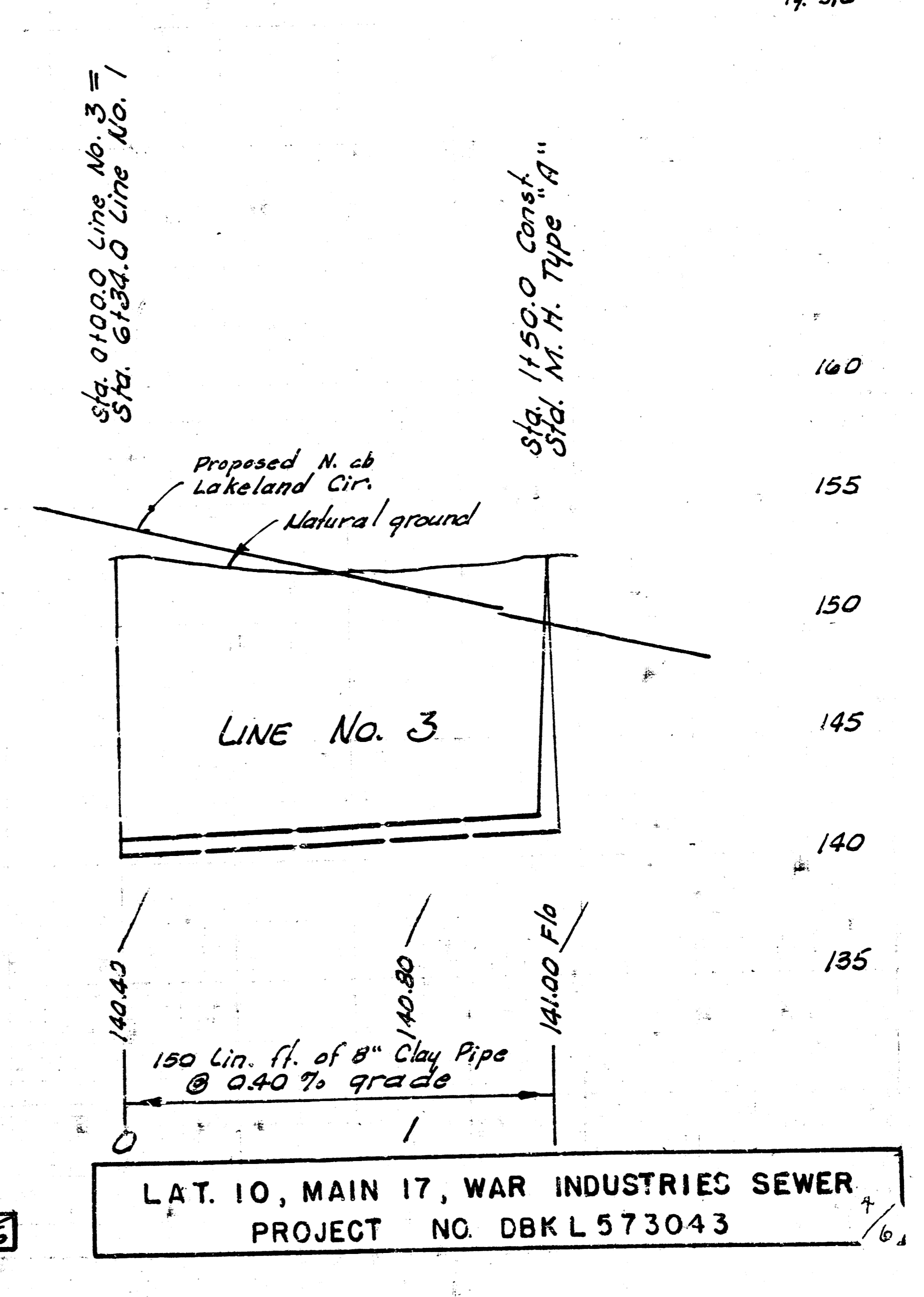


Pg. 11, 12

Pg. 5, 6



NOTE:
Contractor is to
tunnel under
Exist. 36" Storm
water sewer.



L.A.T. 10, MAIN 17, WAR INDUSTRIES SEWER
PROJECT NO. DBK L 573043

