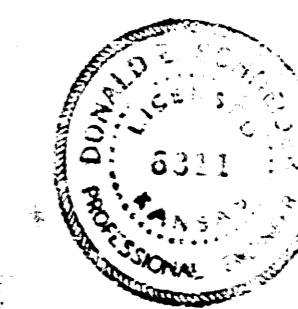
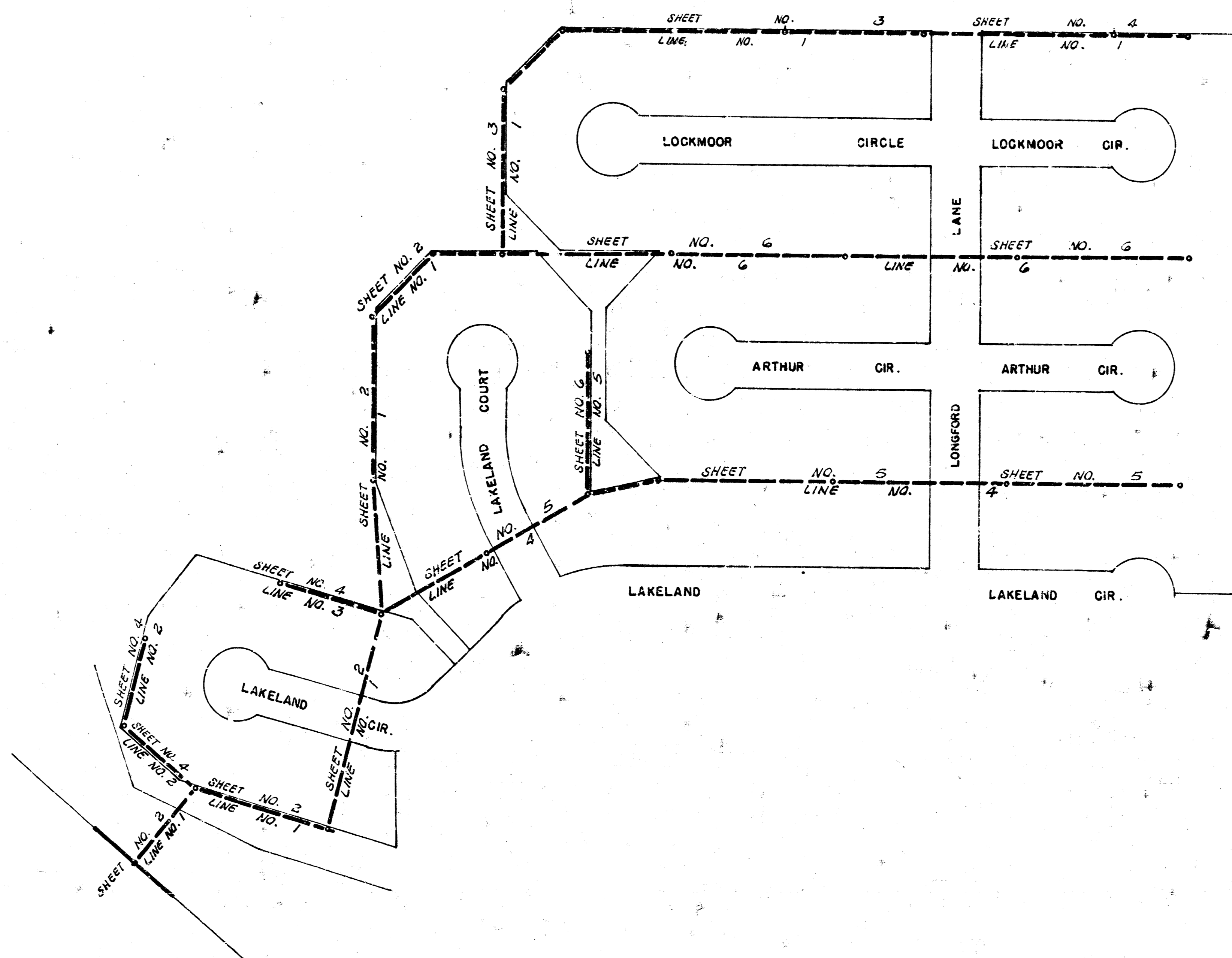
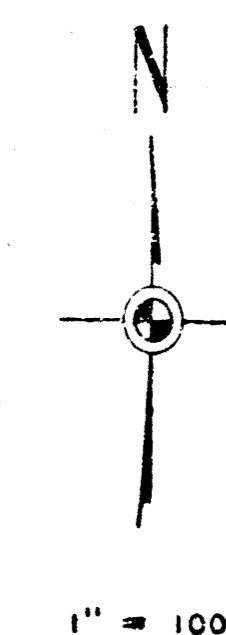


LAT. 10, MAIN 17, WAR INDUSTRIES SEWER
CITY OF WICHITA, KANSAS
R. W. LINN - CITY ENGINEER
SEPT. 1973, PROJECT NO. DBK M 573 043

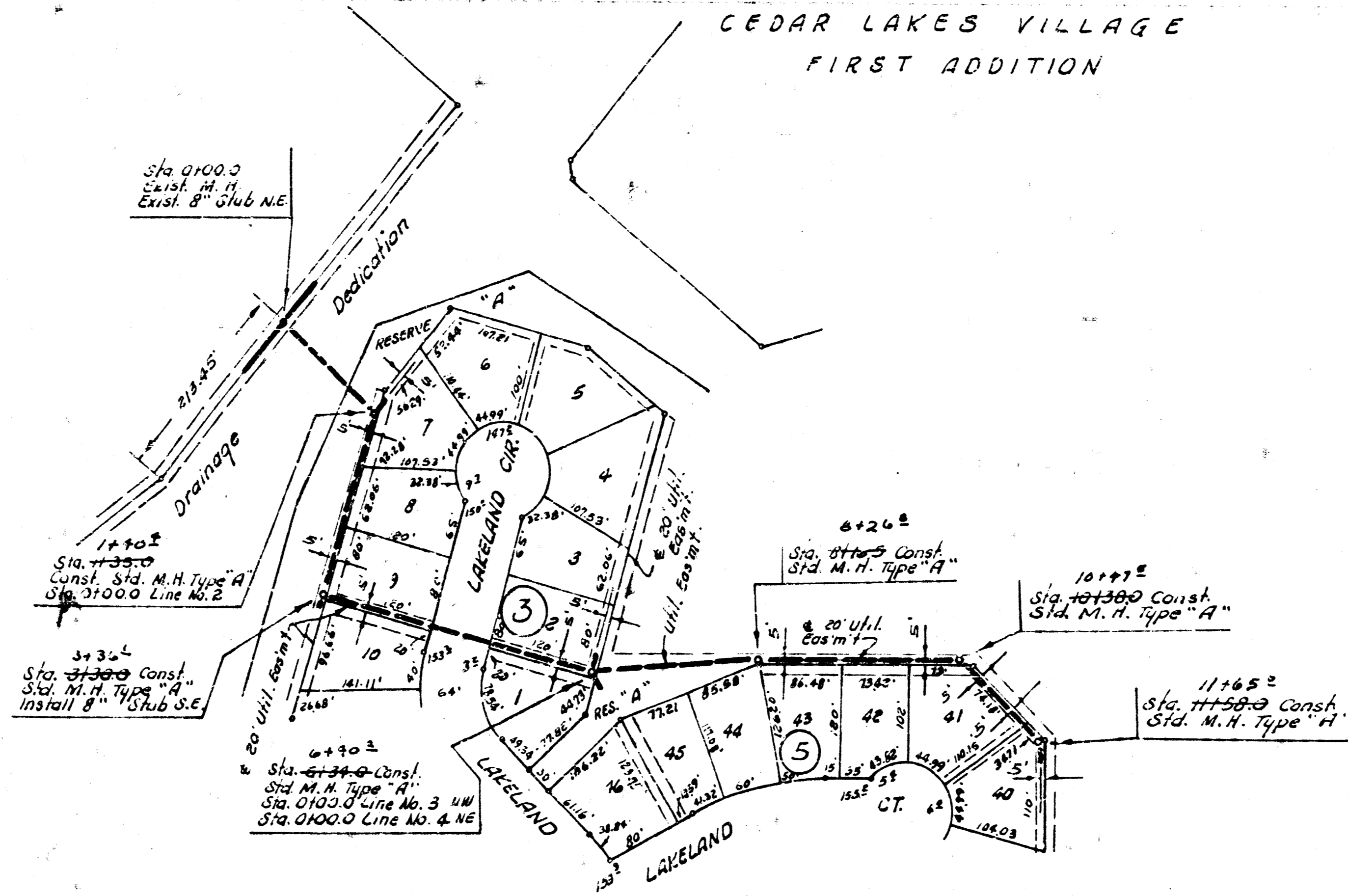


"As Built" final Meas. 279-Y

LAT. 10, MAIN 17, WAR INDUSTRIES SEWER
PROJECT NO. DBK L 573 043



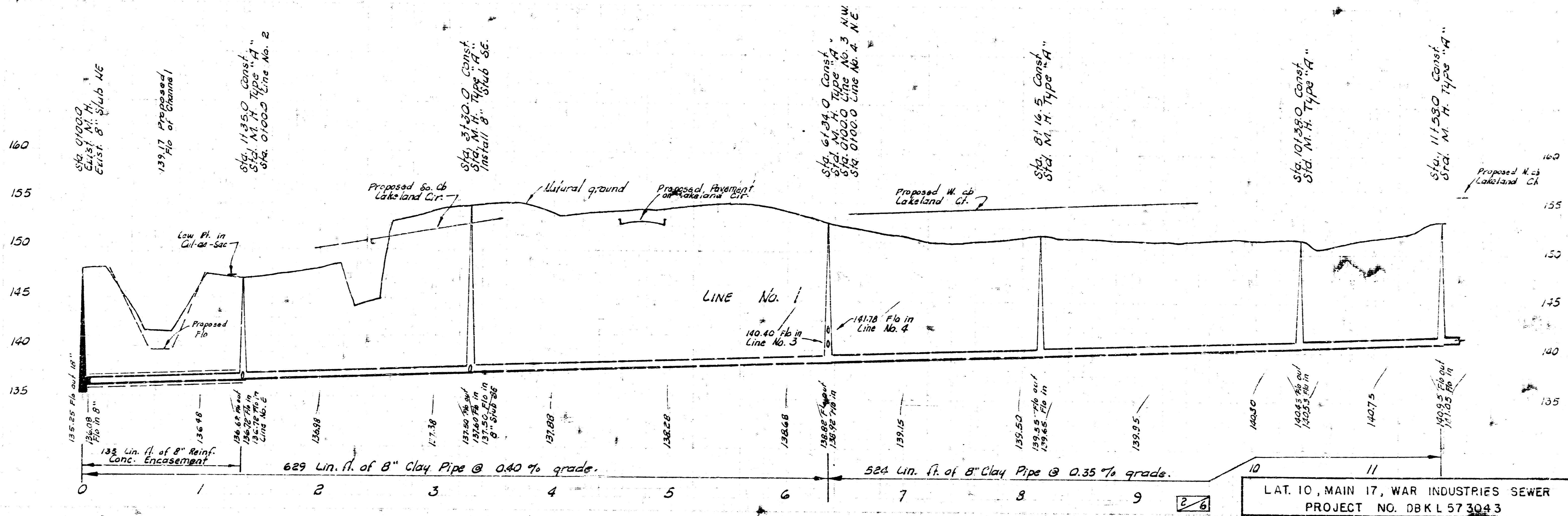
- B.M. #1 City Std. 42' w. & 48' sq. of 1/4 Sec. cor. 1/2 mi. E. of Rock Rd. & Harry 141.824
- B.M. #2 "T" on NW cor. N. Handrail R.C. B.C. on Harry 238' E. of E. Rock Rd. 145.41
- B.M. #3 "a" cut NW. cor. N. Headwall 85' w. of W.L. Langford Lane So. on Harry St. 159.08
- B.M. #4 Top steel T-Fnc. Post 38' N. of N.L. Langford Lane & E.L. Cedar Lakes Adan. 144.53
- B.M. #5 "a" cut NW. cor. N. wing wall on Dam opp. 130' S. of Lakeland Cir. 153.495



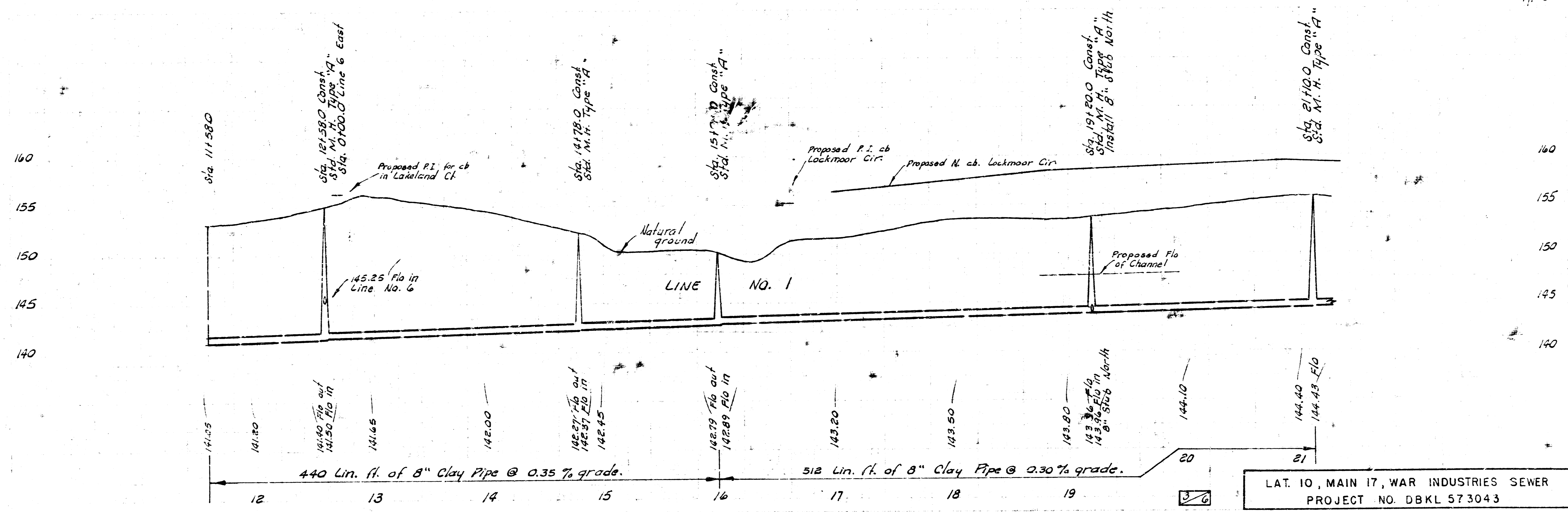
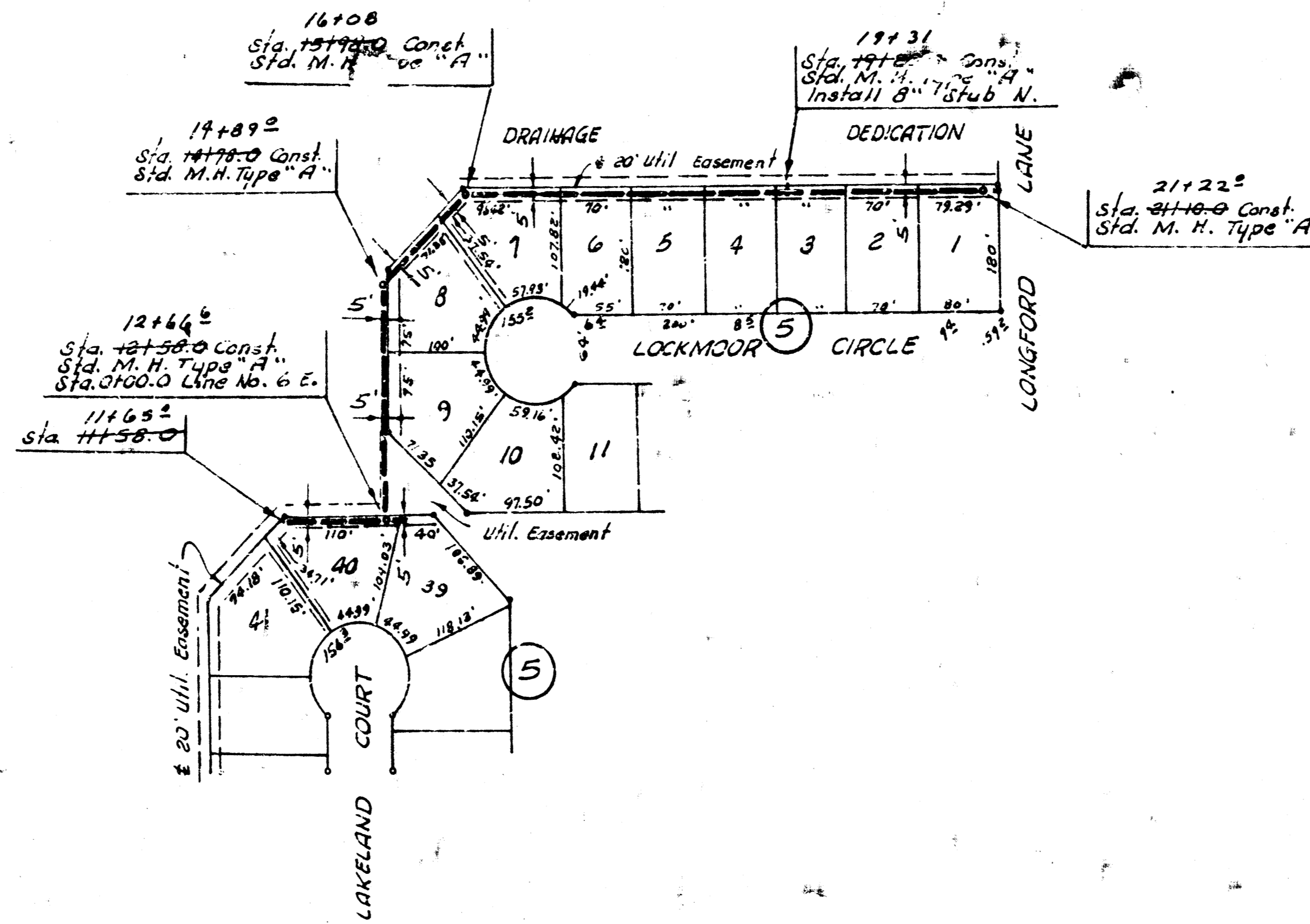
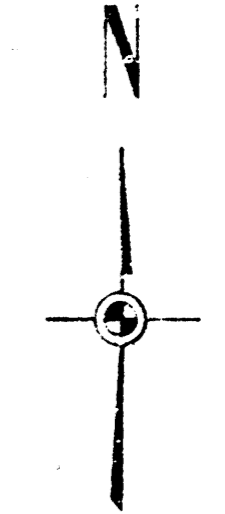
N

Plan Scale 1" = 100'
Profile Scale 1" = 40' horz
1" = 5' vert.

• Irons set

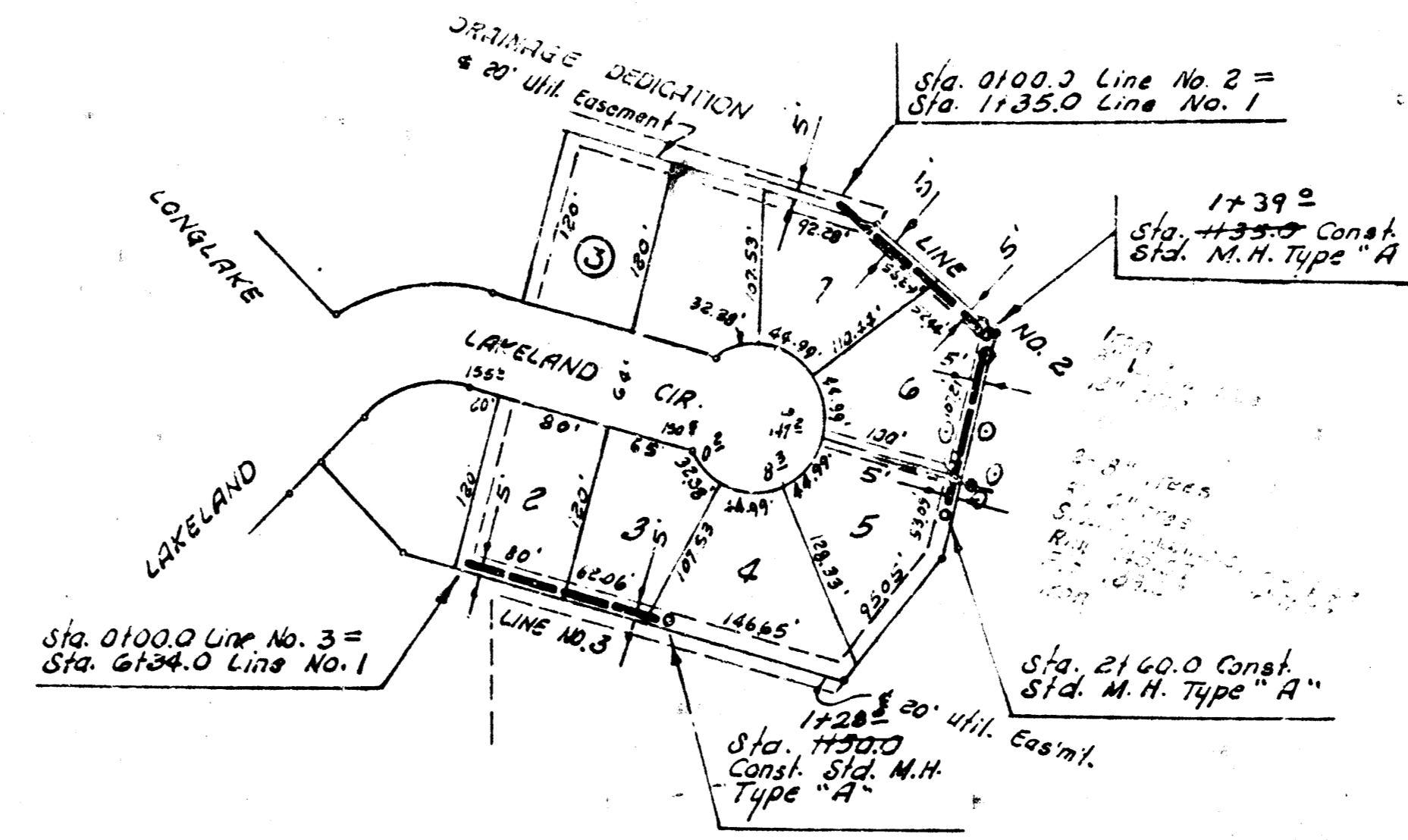
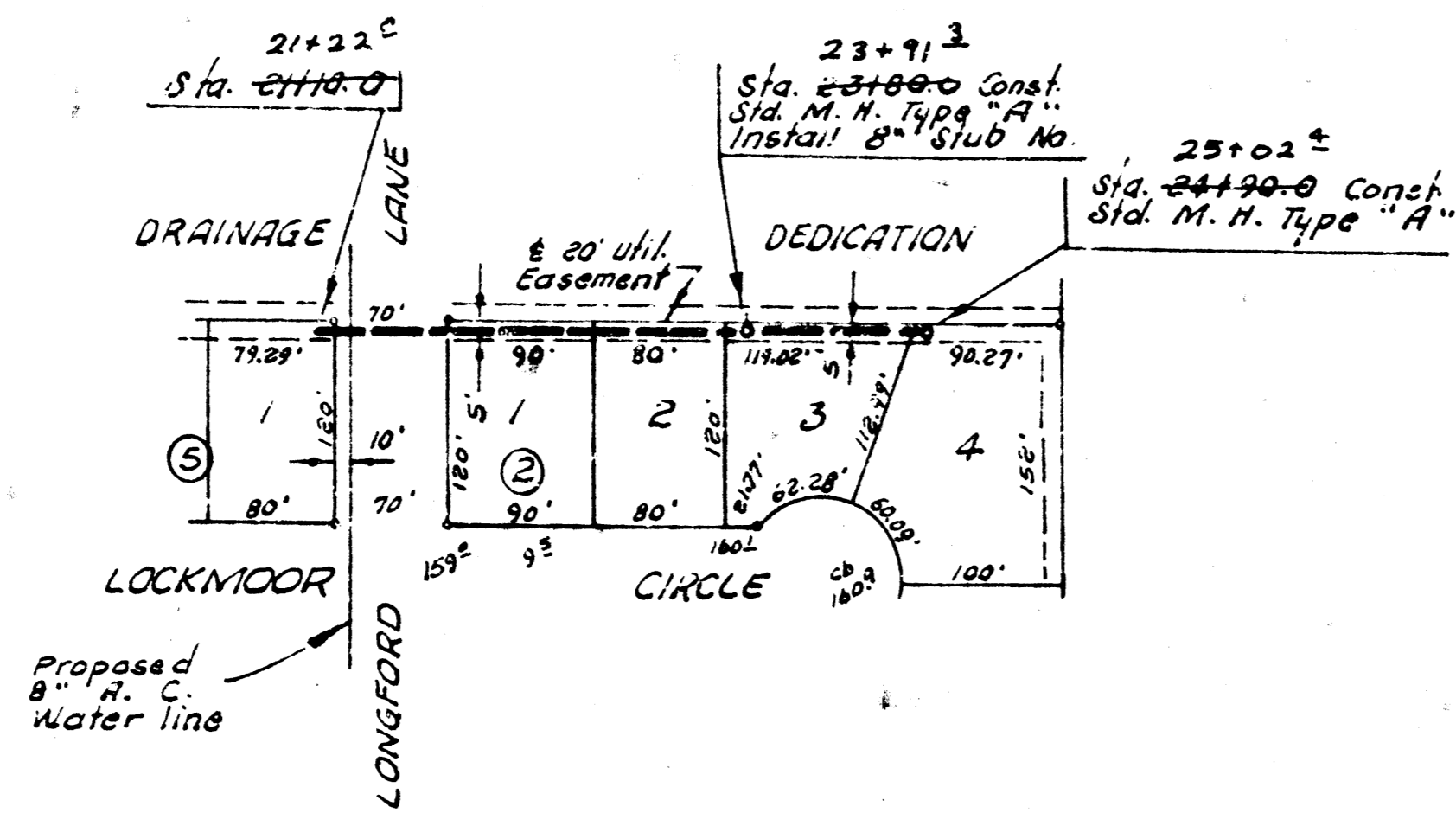
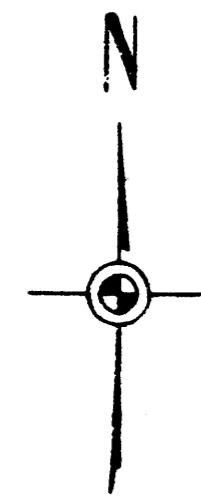


CEDAR LAKES VILLAGE
FIRST ADDITION

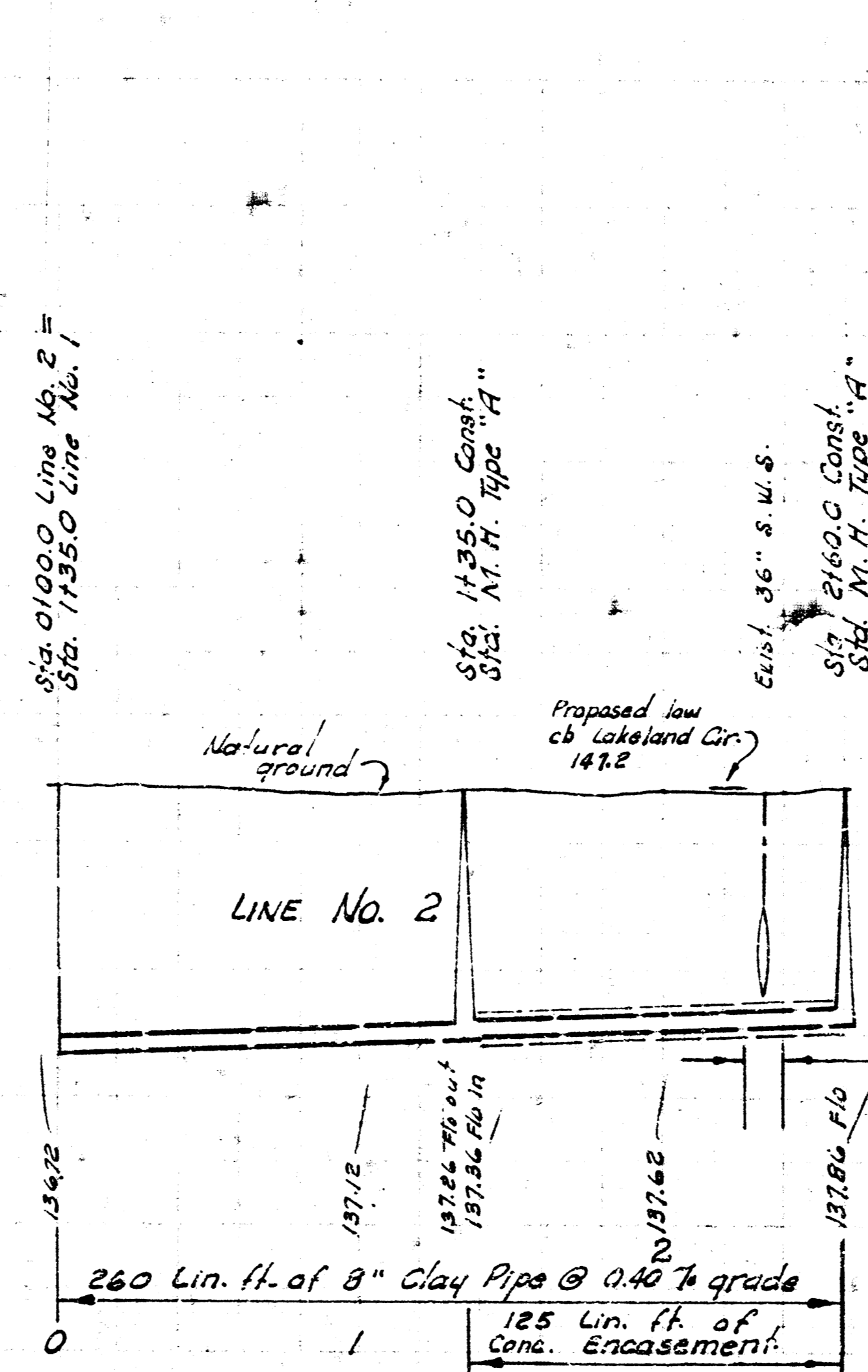
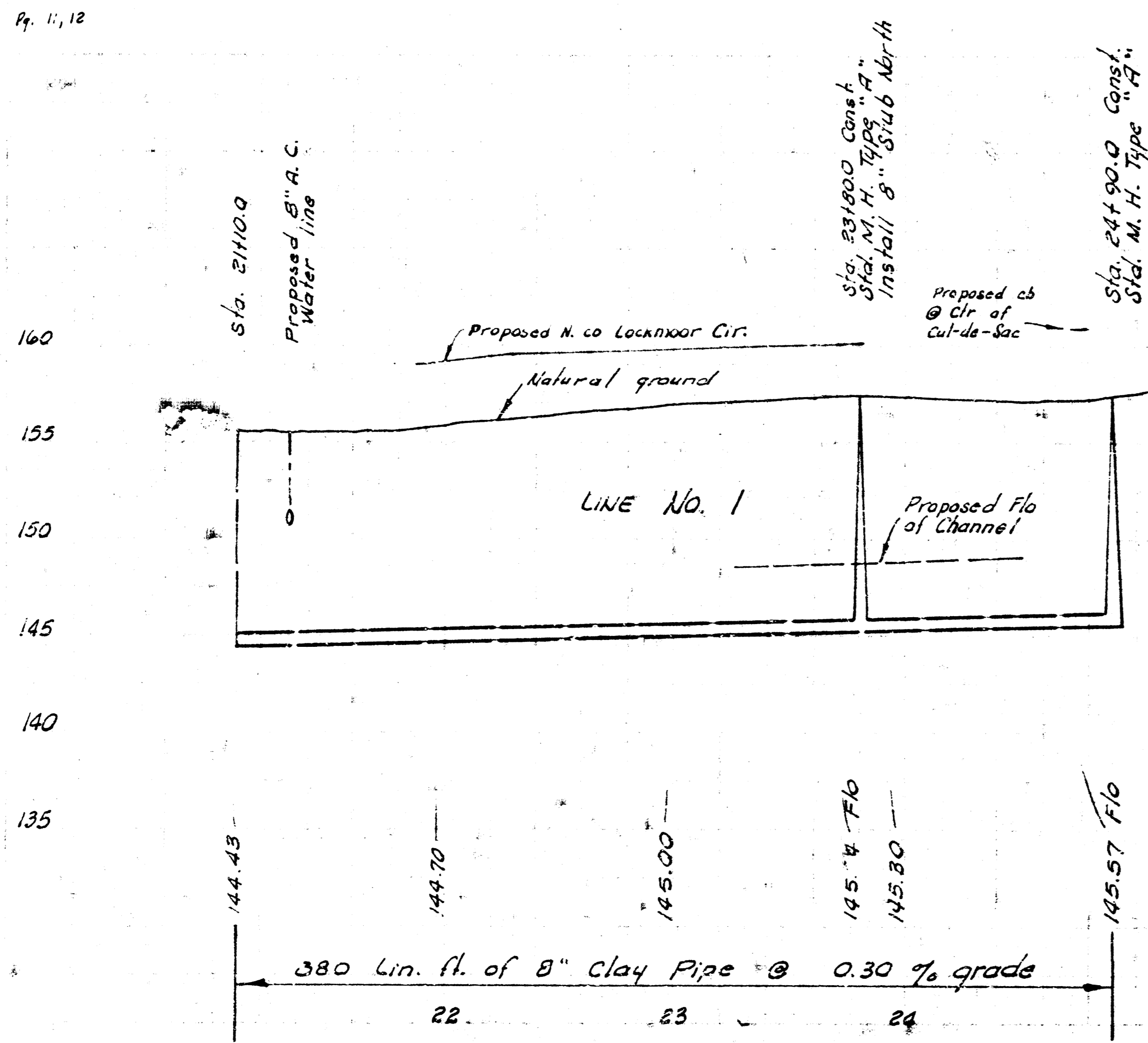


LAT. 10, MAIN 17, WAR INDUSTRIES SEWER
PROJECT NO. DBKL 573043

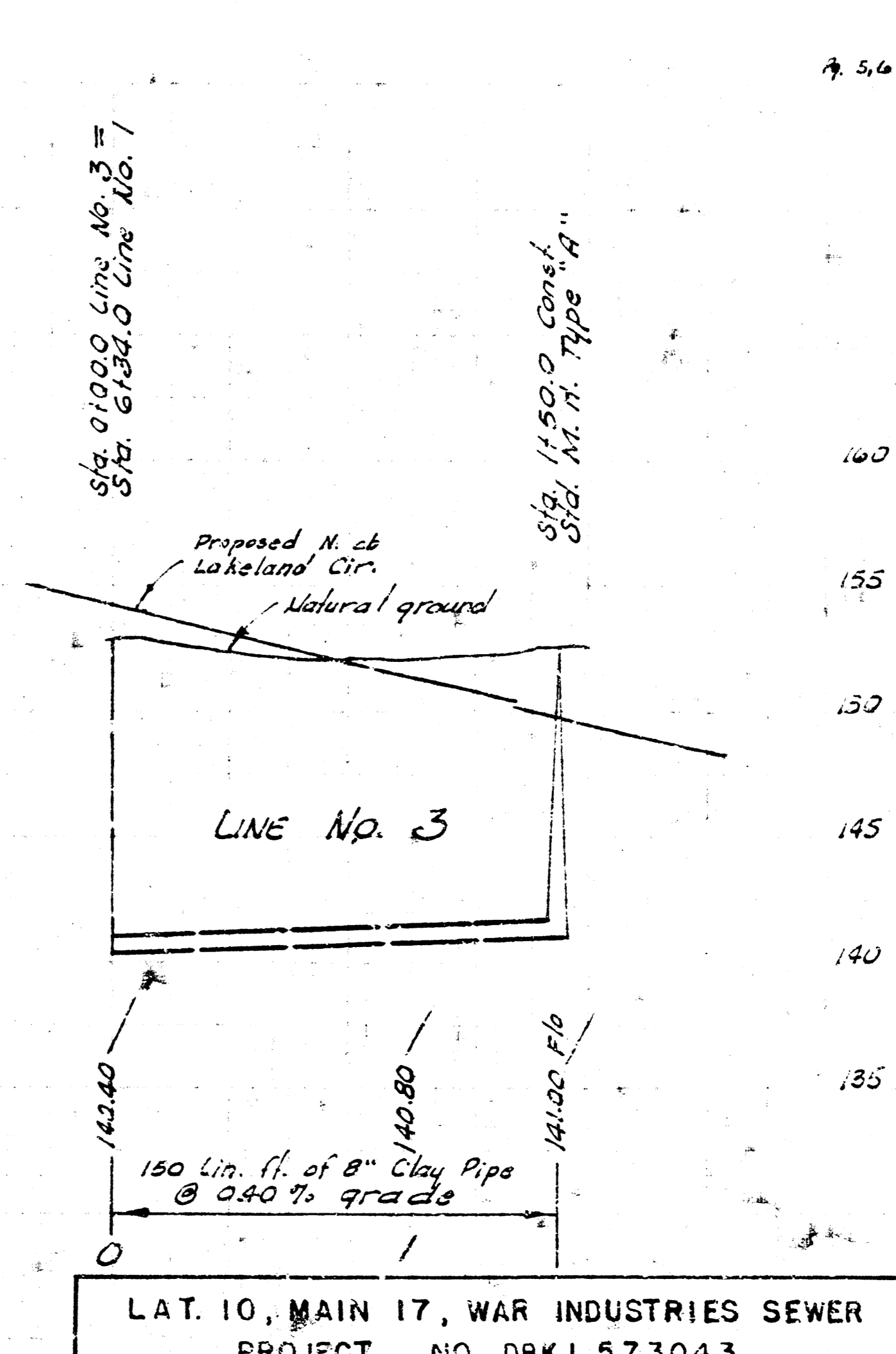
CEDAR LAKE VILLAGE
FIRST ADDITION



Pg. 11, 12

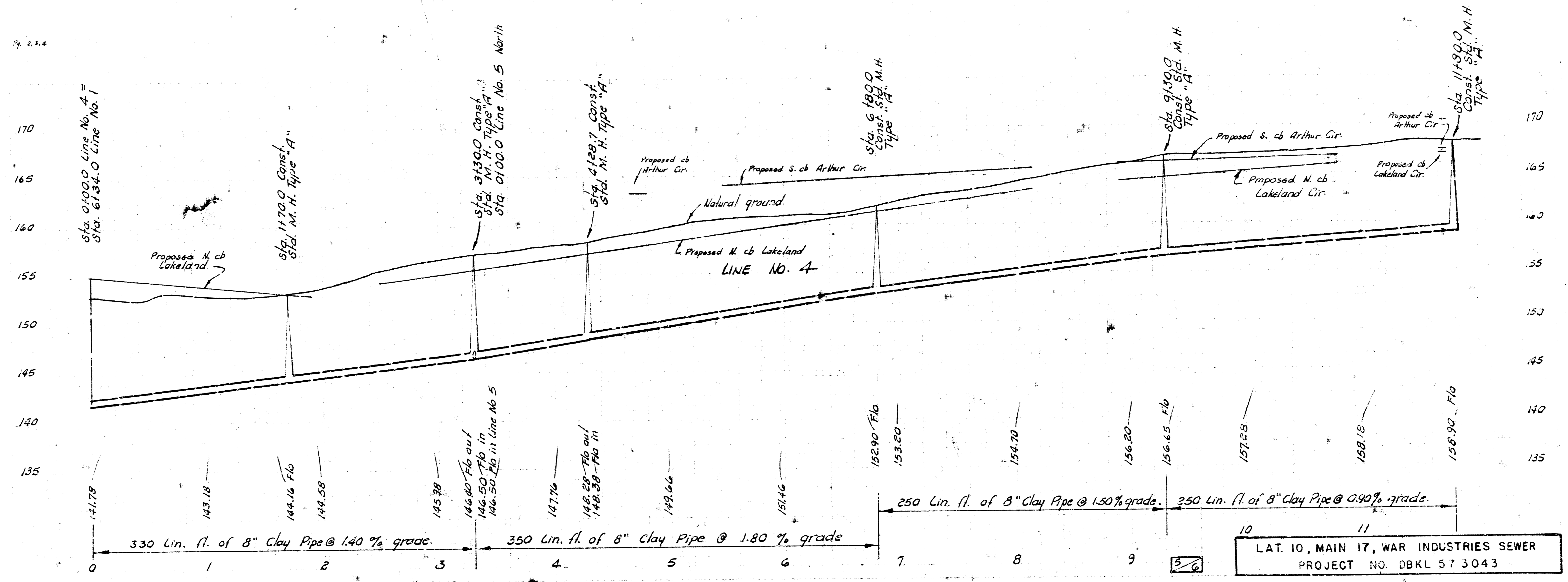
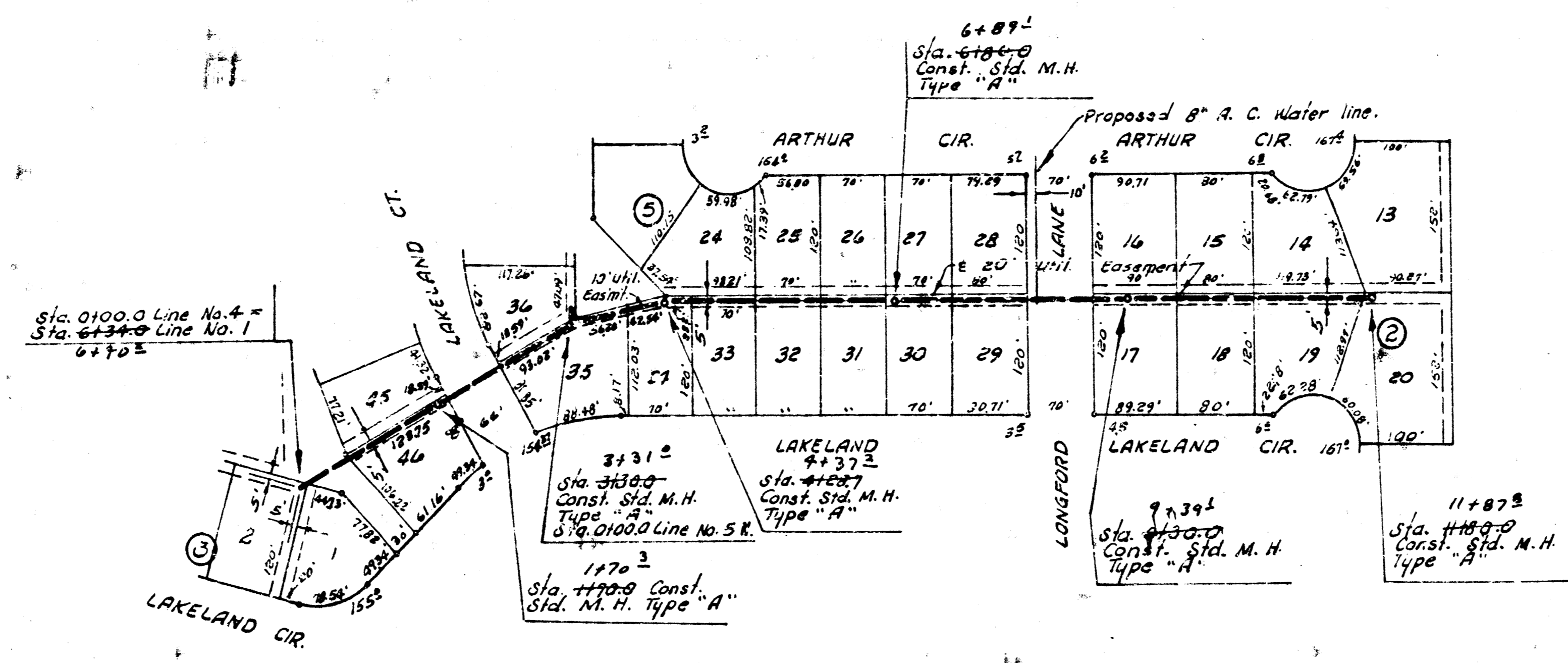
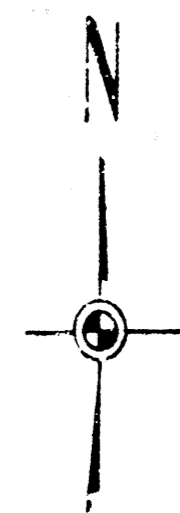


NOTE:
Contractor is to
tunnel under
Exist. 36\"/>



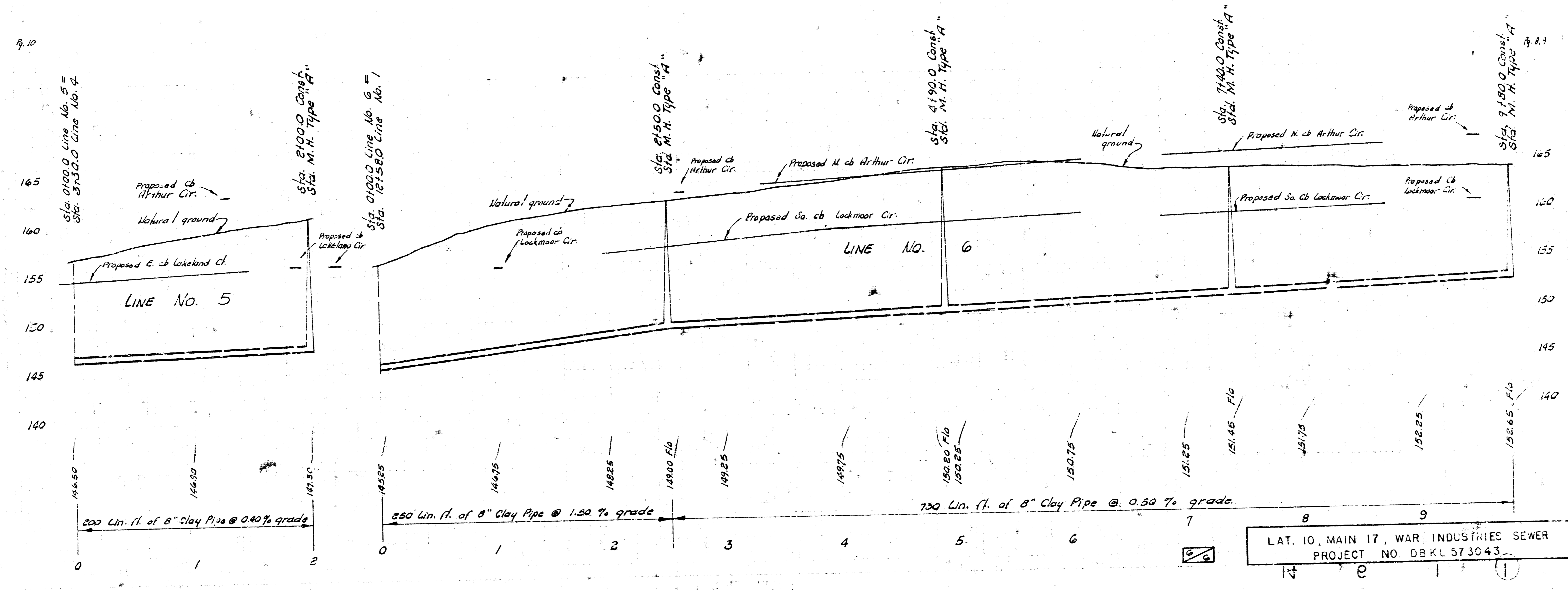
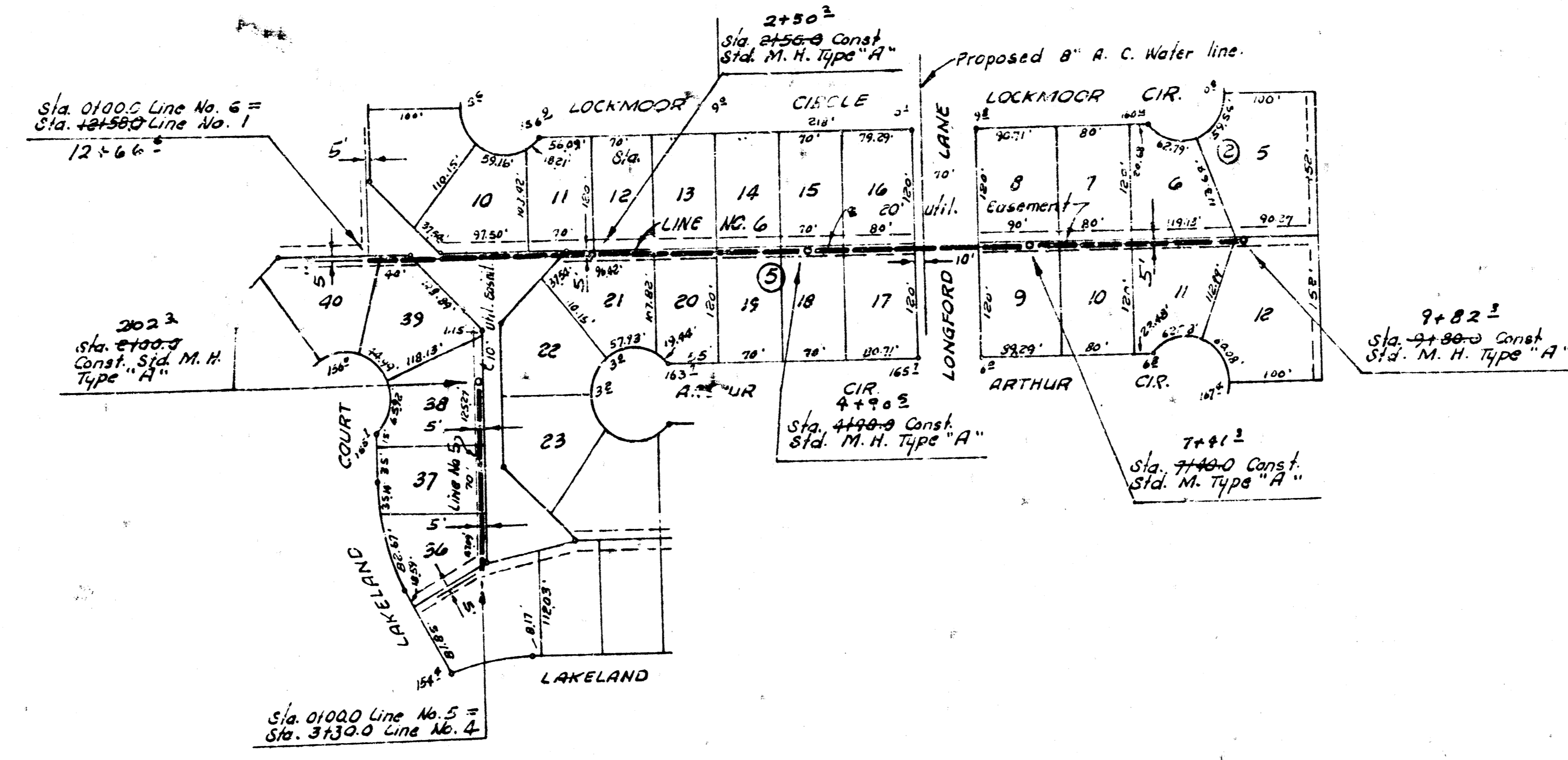
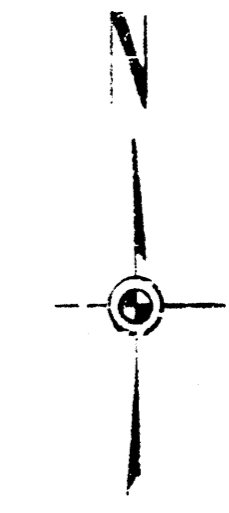
LAT. 10, MAIN 17, WAR INDUSTRIES SEWER
PROJECT NO. DBK L 573043

CEDAR LAKES VILLAGE
FIRST ADDITION



LAT. 10, MAIN 17, WAR INDUSTRIES SEWER
PROJECT NO. DBKL 57 3043

CEDAR LAKES VILLAGE
FIRST ADDITION



LAT. 10, MAIN 17, WAR INDUSTRIES SEWER
PROJECT NO. DB KL 57 30 43