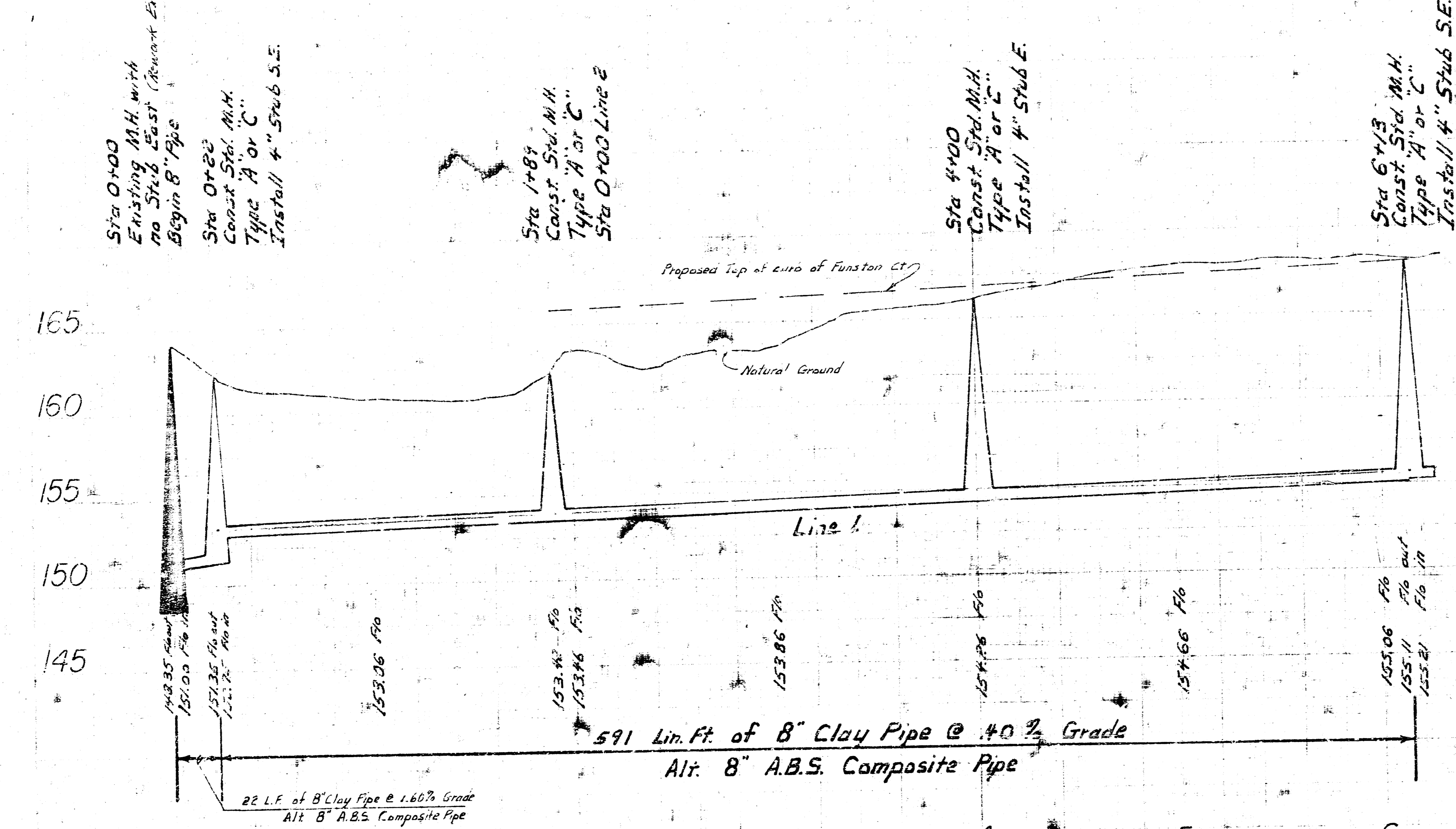


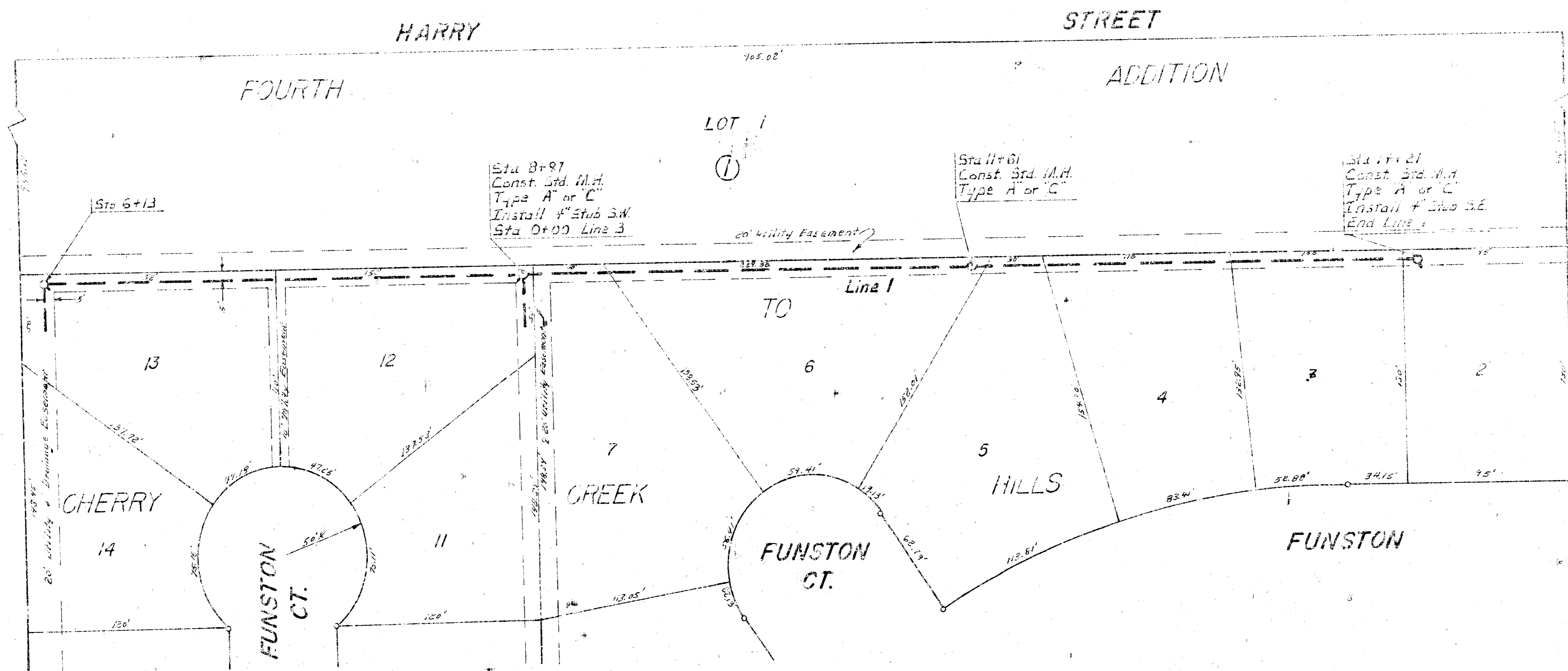
Plan Scale 1" = 40'
 Profile Scale 1" = 40' Hor.
 1" = 5' Vert.

BM 163.11 "a" end of Road west curb Longford
 at South Line Lakeland
 BM 169.48 H.R. Spike west face P.P. N.W. Corner
 Funston and Cypress

NOTE: FIELD ENGINEER SHALL SET UPS OF MANHOLES TO MATCH EXISTING RISES AND GRADES OF ADJACENT LOTS. RISES AND ADDITIONAL STUBS SHALL BE INSTALLED ON THIS PROJECT TO MATCH EXISTING RISES AND GRADES OF ADJACENT LOTS. RISES SHALL BE CAPTURED 10 FT. RISER CONSTRUCTION SHALL CONFORM TO THE CITY OF WICHITA STANDARD RISER DETAIL SHEET. LOCATIONS OF THE CAPTURE POINTS SHALL BE MARKED WITH 3" DIA. PLYWOOD OR METAL PLATE WITH 3" DIA. COLORED TAPE TO THE END OF THE RISER AND WRITTEN TO THE END OF THE RISER. THE COLOR OF THE TAPE SHALL BE AS FOLLOWS: 1" DIA. A.B.S. PIPE, ELEVATIONS OF STUBS AND LIPS OF RISERS SHALL BE SHOWN ON THE DRAWING AND THE LOCATION OF ADJACENT DRAINS WHEN THESE LOTS ARE DEVELOPED.



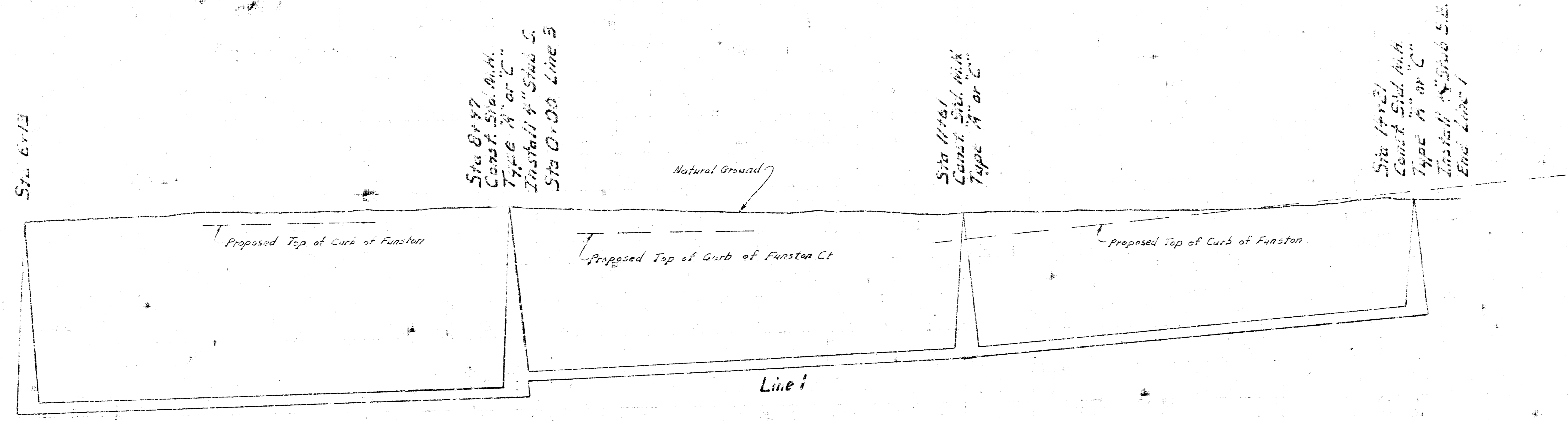
LAT 25 MAIN 17 W.I.S.
 CITY OF WICHITA, KS.
 R.W. LINN — CITY ENGINEER
 Project No. 468 76 245 80534 000 000 1/3



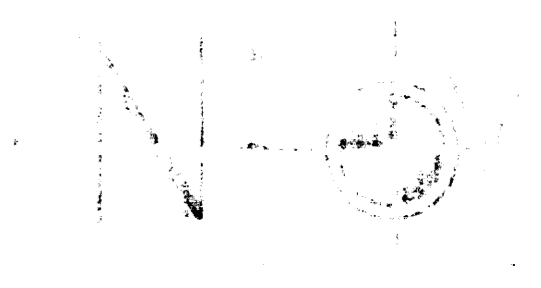
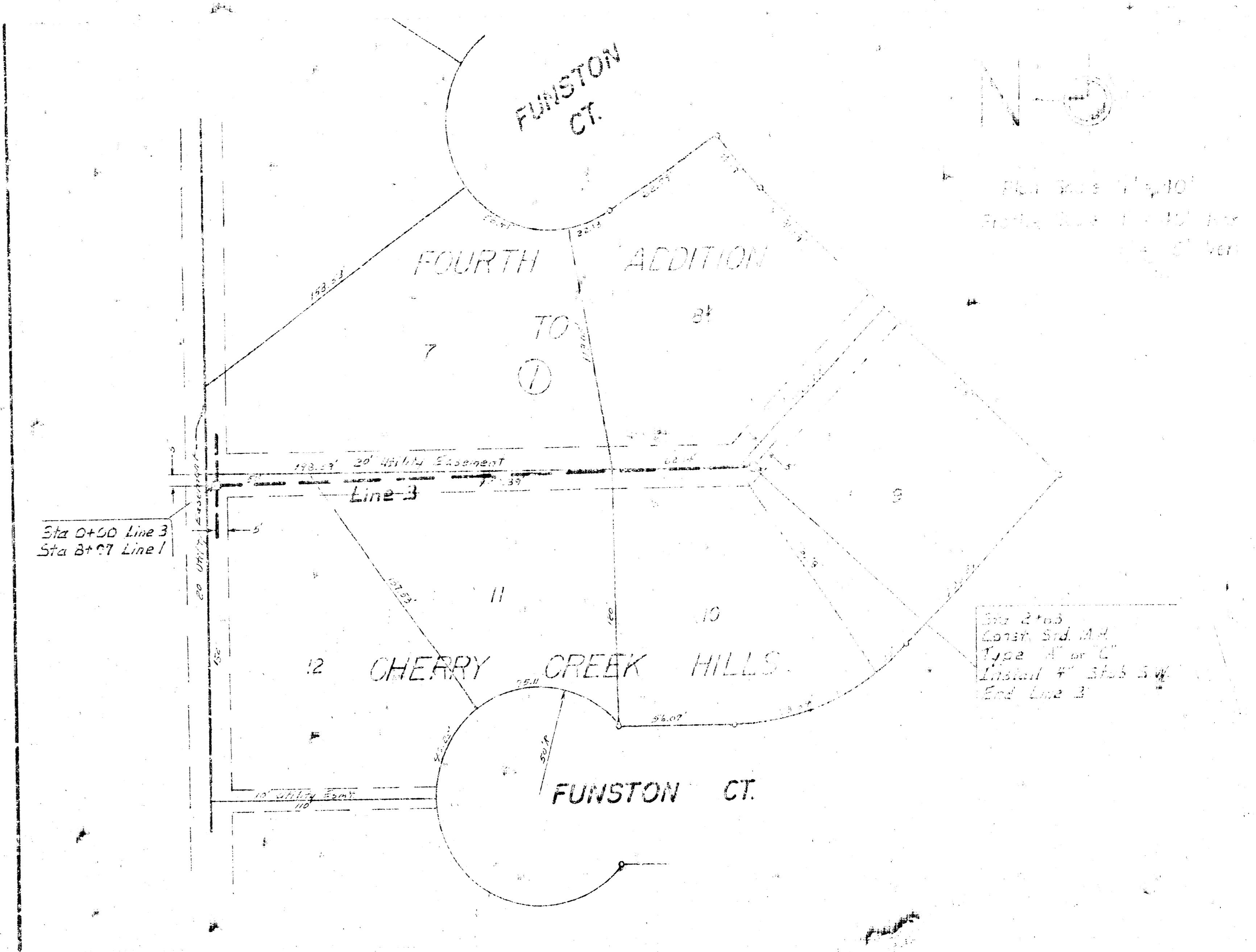
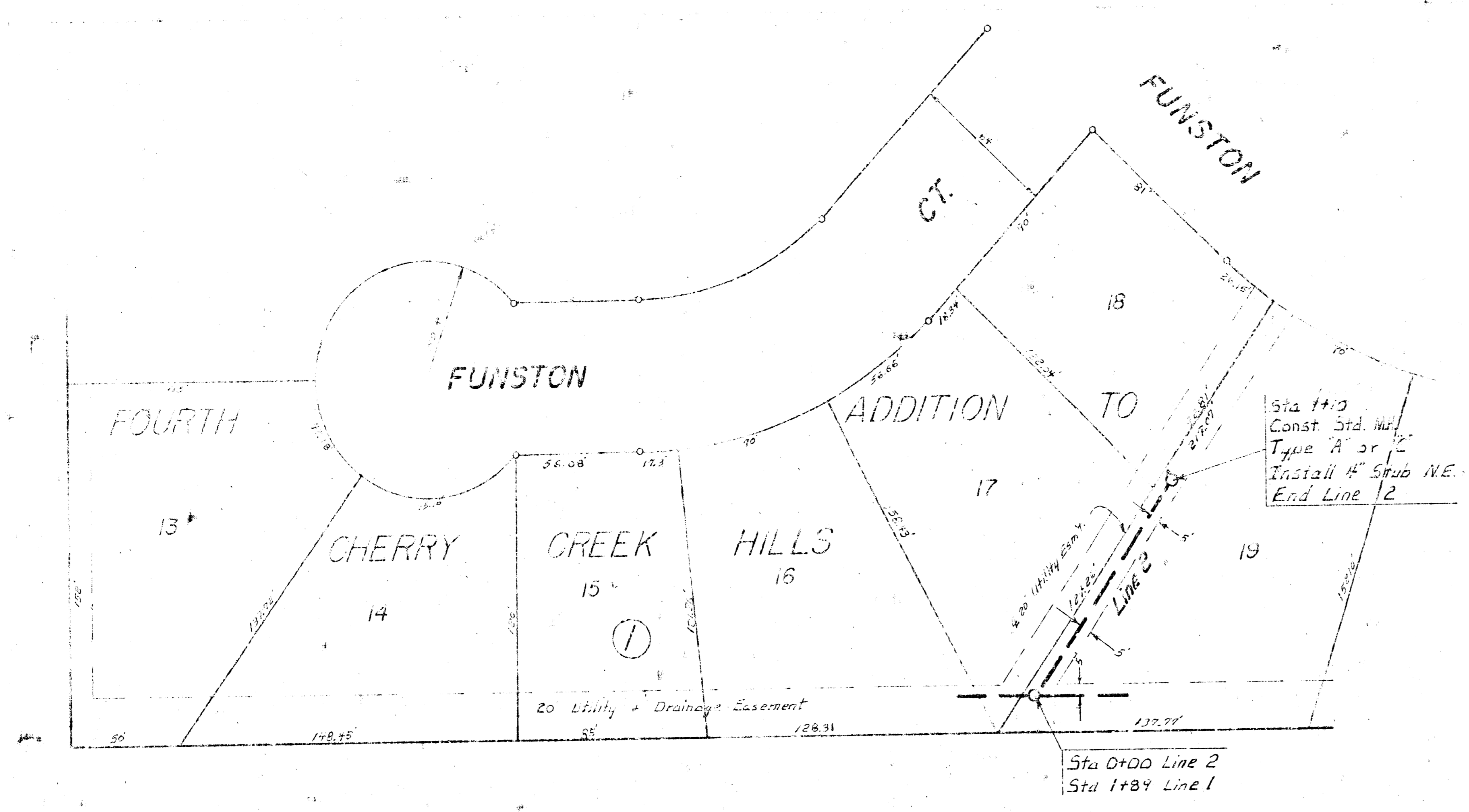
1" = 40' (Horizontal)
 1" = 40' (Vertical)

170
 165
 160
 155
 150

170
 165
 160
 155
 150



Station	Pipe Material	Grade	Length	Alt.
Sta. 6+13 to Sta. 8+00	8" Clay Pipe	0.40%	284 Lin. Ft.	Alt. B" A.B.S. Composite Pipe
Sta. 8+00 to Sta. 10+00	8" Clay Pipe	0.40%	264 Lin. Ft.	Alt. B" A.B.S. Composite Pipe
Sta. 10+00 to Sta. 12+00	8" Clay Pipe	0.95%	260 Lin. Ft.	Alt. 8" A.B.S. Composite Pipe



170
165
160
155
150

