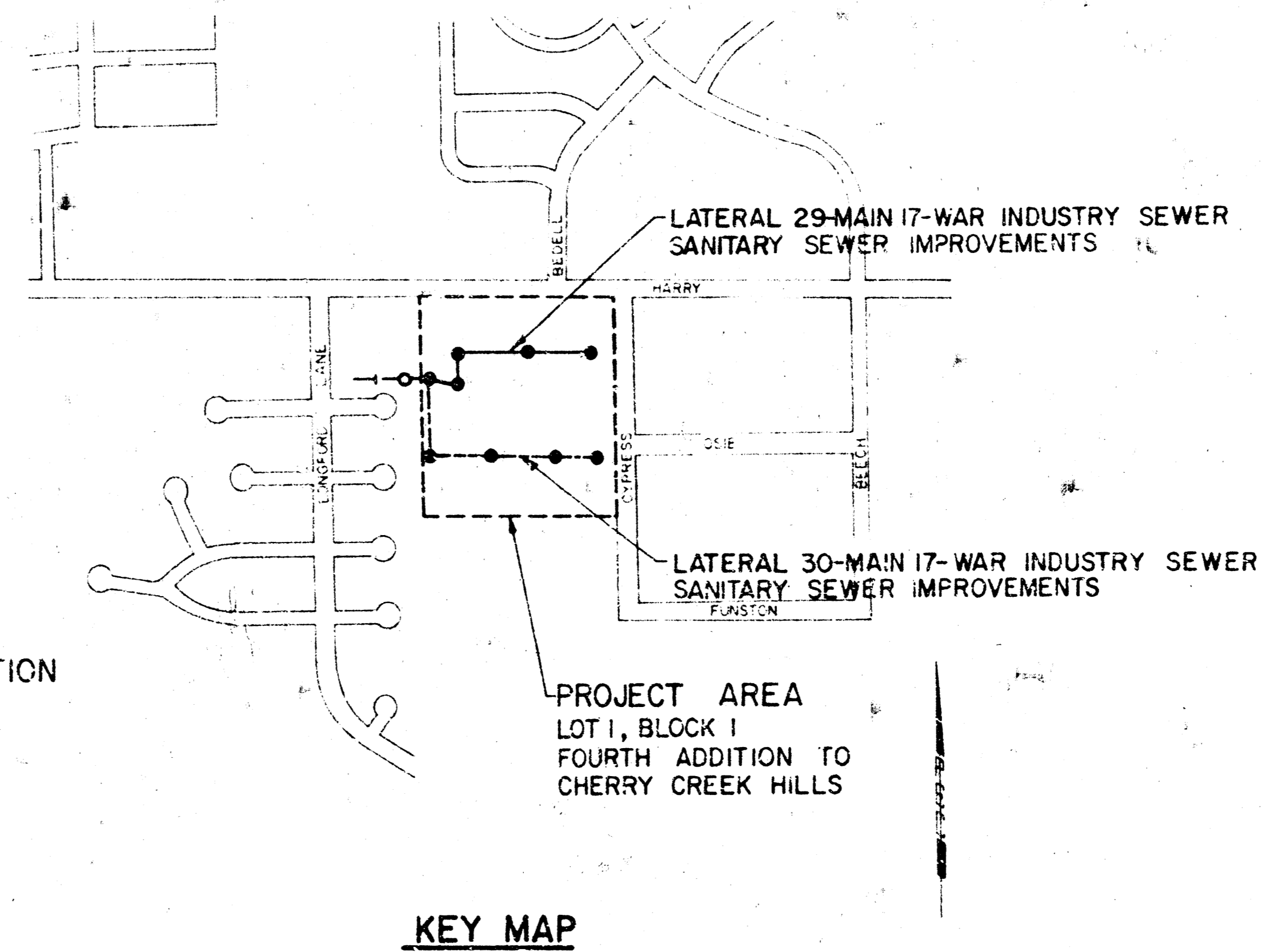
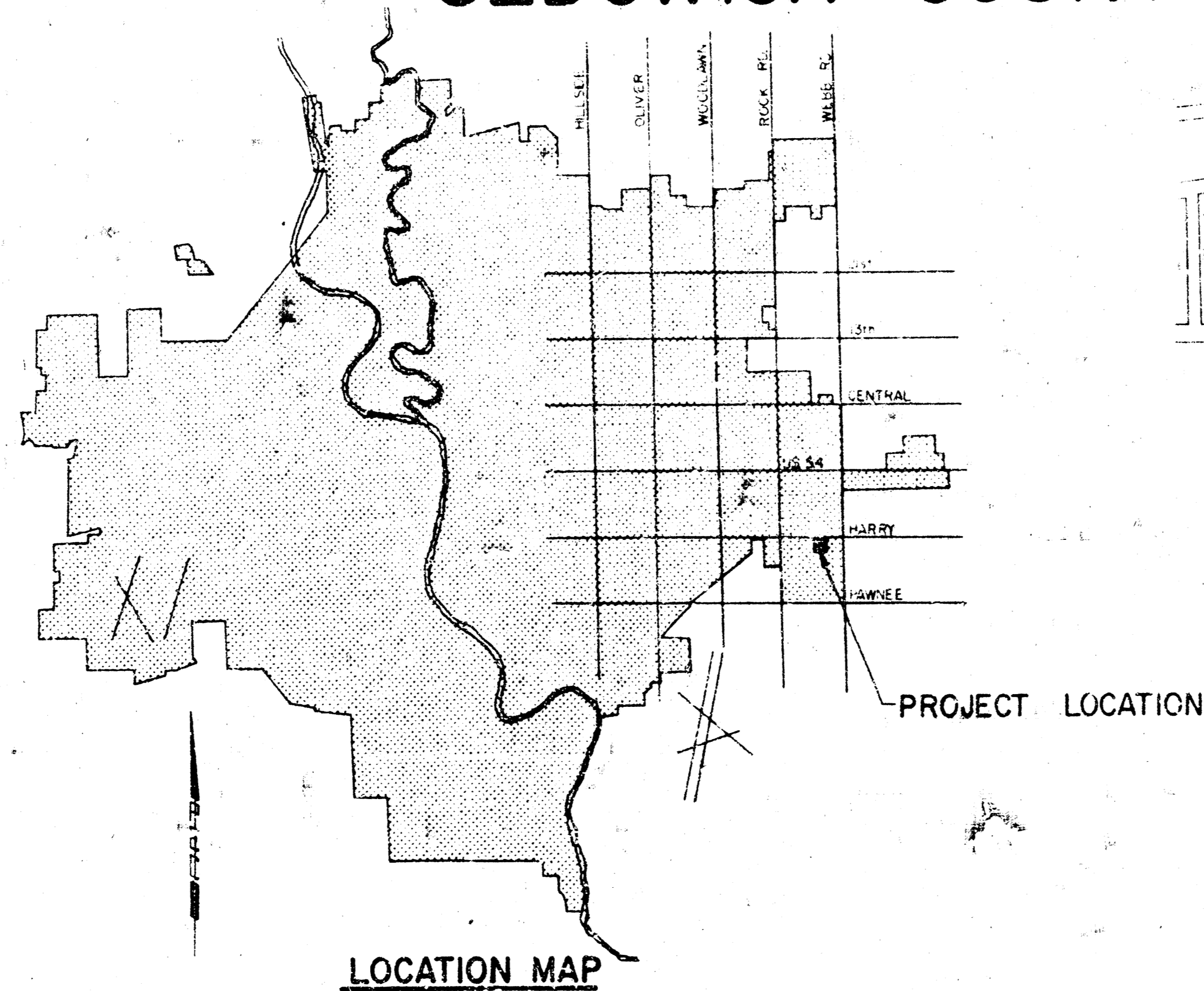


CONSTRUCTION PLANS FOR  
**SANITARY SEWER IMPROVEMENTS**  
 IN  
**LOT 1, BLOCK 1 OF THE  
 FOURTH ADDITION TO CHERRY CREEK HILLS**  
 (ARAGON APARTMENTS)  
 LATERAL 29-MAIN I7-WAR INDUSTRY SEWER  
**THE CITY OF WICHITA**  
 SEDGWICK COUNTY, KANSAS

GENERAL NOTES

1. ALL CONSTRUCTION AND MATERIALS TO COMPLY WITH CITY OF WICHITA SPECIFICATIONS AND STANDARDS.
2. SEWER LINES TO BE INSPECTED BY THE DEPARTMENT OF PUBLIC WORKS INSPECTION.
3. THE CONTRACTOR WILL BE REQUIRED TO NOTIFY EACH OF THE FOLLOWING UTILITY COMPANIES PRIOR TO THE BEGINNING OF CONSTRUCTION AND SHOULD REQUEST THAT ANY EXISTING LINES BE FLAGGED.  

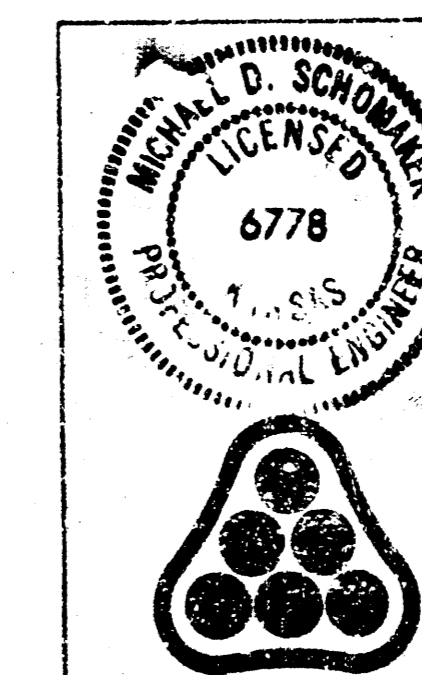
CITY OF WICHITA WATER DEPARTMENT 455 NORTH MAIN STREET 268-4557 BENNY GEGEN	SOUTHWESTERN BELL TELEPHONE CO. 154 NORTH BROADWAY 262-5500
---	---
4. THE CONTRACTOR MUST ALSO NOTIFY THE TELEPHONE COMPANY 24 HOURS PRIOR TO BEGINNING ANY CONSTRUCTION WORK NEAR BURIED TELEPHONE LINES.
5. ALL STUBS SHOWN ON PLANS SHALL BE PLUGGED.
6. ALL PROPOSED GROUND ELEVATIONS, PAD ELEVATIONS, AND BUILDING LOCATIONS, WERE SET IN ACCORDANCE WITH SHEET B OF THE "SITE PLAN-GRADING" 12-1-78 FOR ARAGON APARTMENTS PREPARED BY "RODGER A. BROOKS, ARCHITECT, P. A."



**BENEFIT DISTRICT**  
 LOT 1, BLOCK 1, FOURTH ADDITION  
 TO CHERRY CREEK HILLS  
 EXCEPT THE SOUTH 490 FEET.

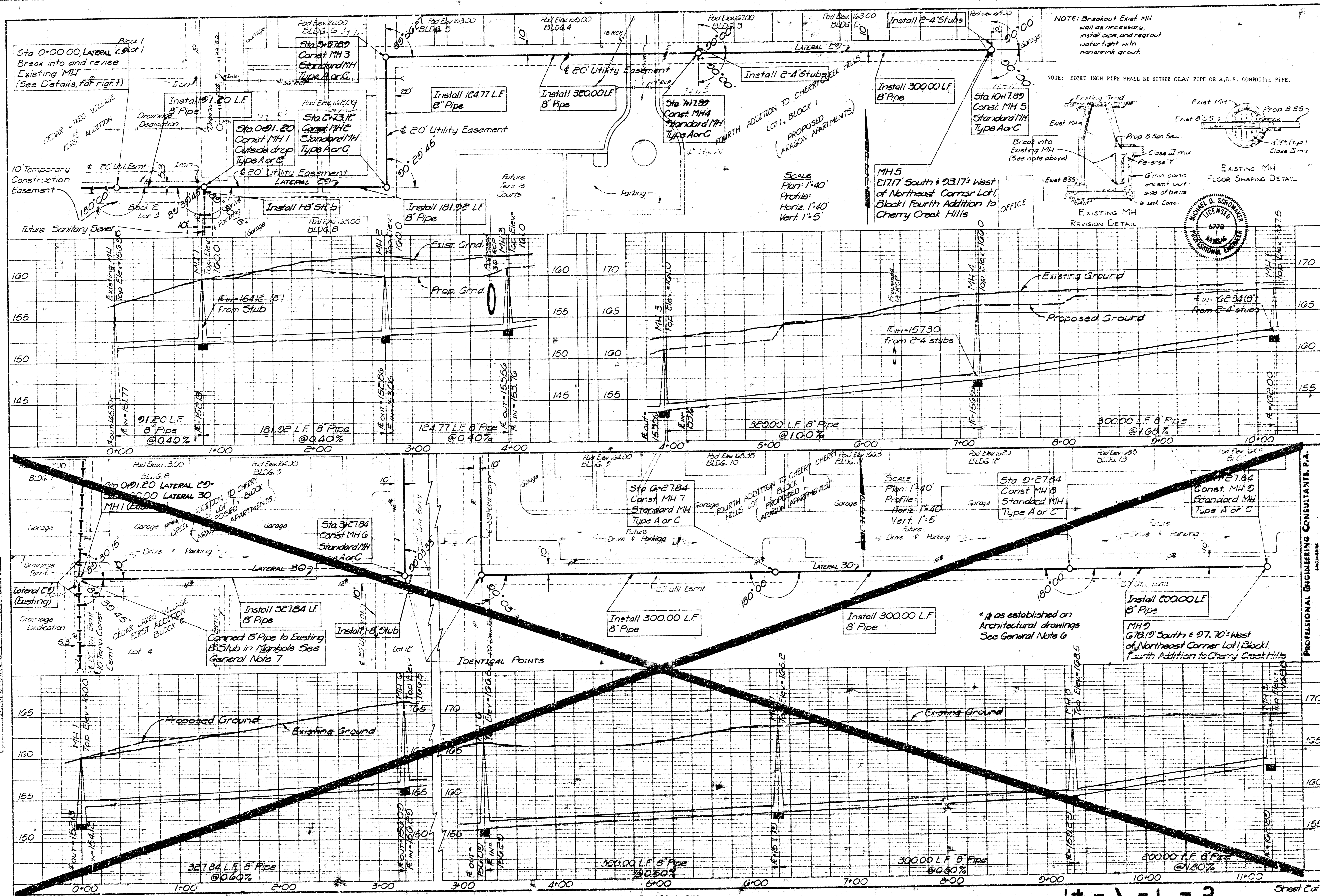
CITY OF WICHITA PROJECT NO. 468-76-245-80696-000-000-001

PLANS PREPARED BY  
**PROFESSIONAL ENGINEERING CONSULTANTS, P.A.**  
 ENGINEERS  
 WICHITA, KANSAS



No.	Revision	By	Date
CITY OF WICHITA, KANSAS LATERAL 29-MAIN I7-WAR INDUSTRY SEWER <b>TITLE SHEET</b> R.W. LINN, P.E. CITY ENGINEER C of W Proj. No. 468-76-245-80696-000-000-001 <b>PROFESSIONAL ENGINEERING CONSULTANTS, P.A.</b> ENGINEERS WICHITA, KANSAS			
Designed by	MDS	Job No.	19004
Drawn by	TWC	Date	JUN. 1979
		Sheet	1 of 2

Sanitary Sewer



14-1-1-2

PLATE 3 PLAN - PROFILE B & R STANDARD