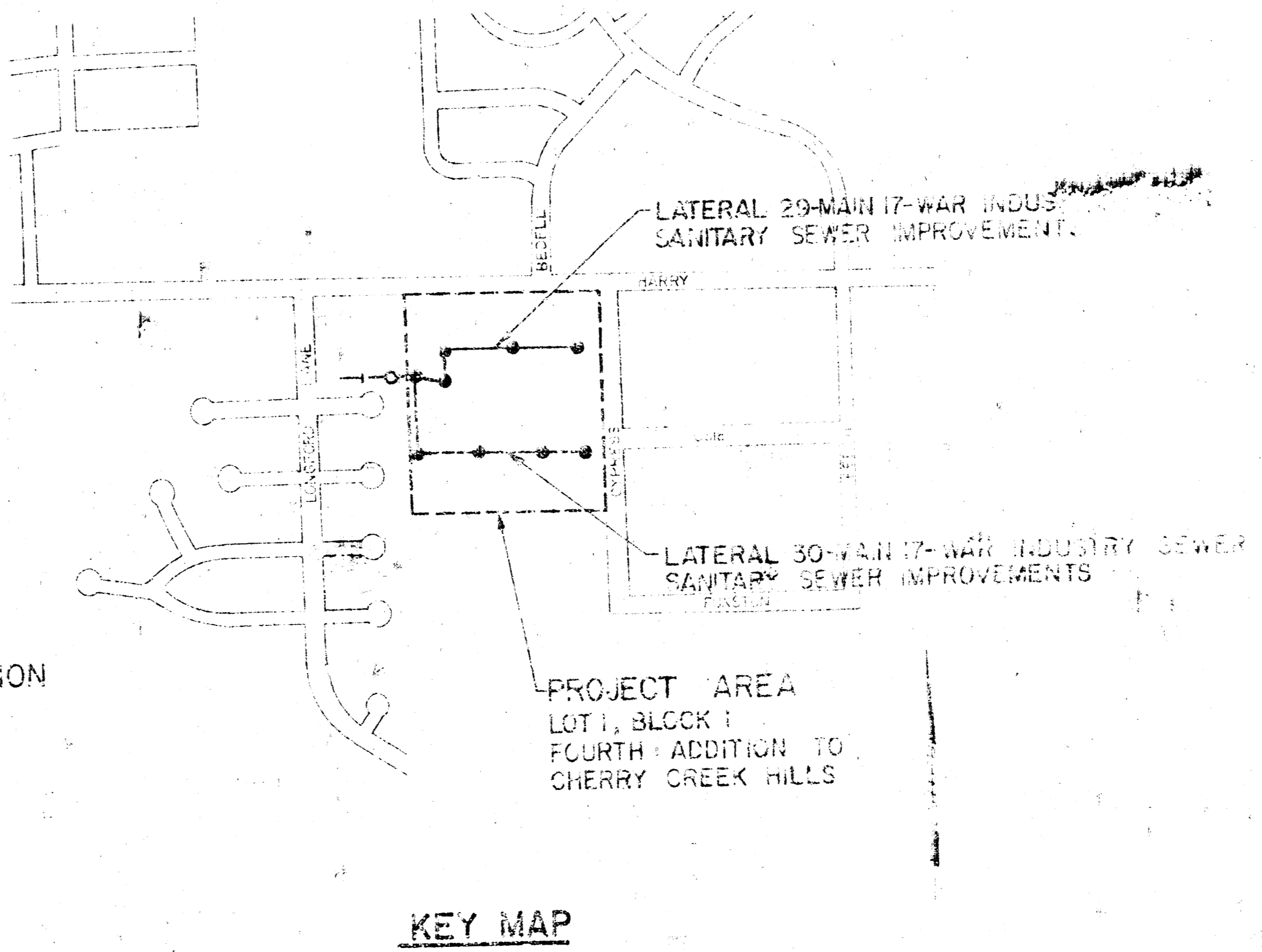
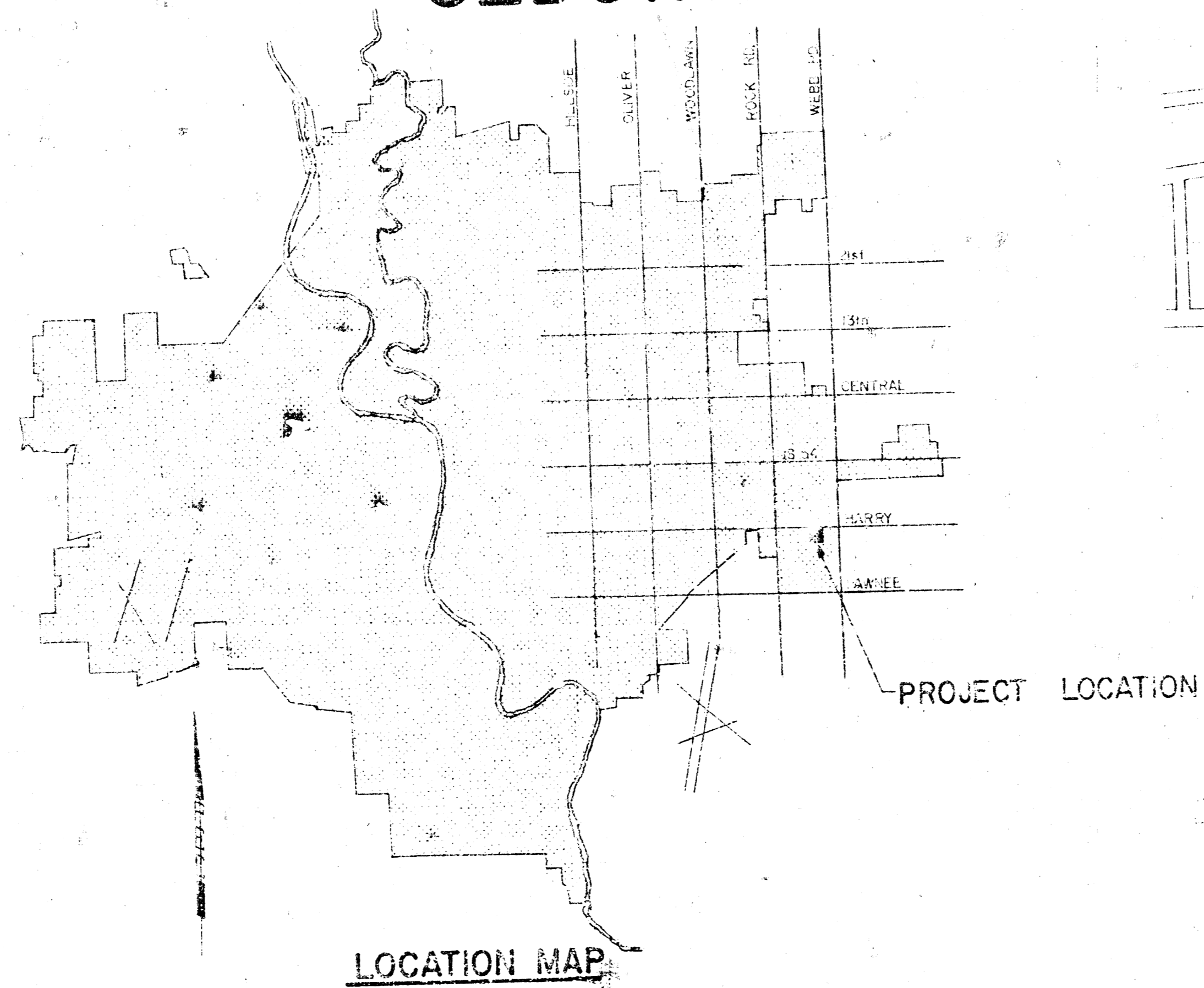


CONSTRUCTION PLANS FOR
SANITARY SEWER IMPROVEMENTS
 IN
LOT 1, BLOCK 1 OF THE
FOURTH ADDITION TO CHERRY CREEK HILLS
 (ARAGON APARTMENTS)
LATERAL 30-MAIN 17-WAR INDUSTRY SEWER
THE CITY OF WICHITA
SEDGWICK COUNTY, KANSAS

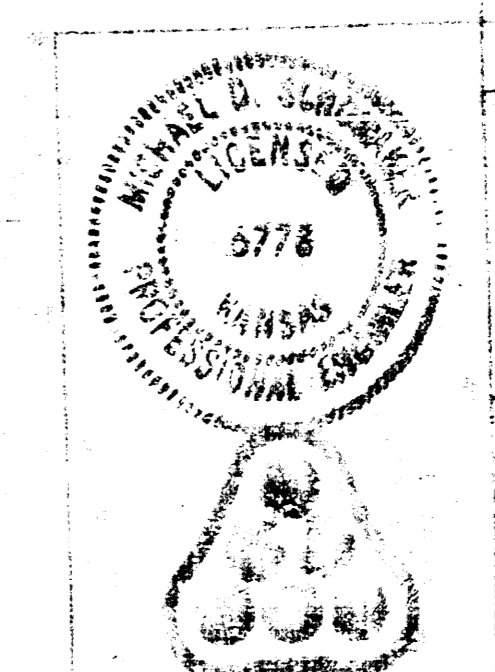
1. ALL CONSTRUCTION AND MATERIALS TO COMPLY WITH CITY OF WICHITA SPECIFICATIONS AND STANDARDS.
2. SEWER LINES TO BE INSTALLED BY THE DEPARTMENT OF PUBLIC WORKS INSPECTOR.
3. THE CONTRACTOR SHALL BE REQUIRED TO VERIFY EACH OF THE FOLLOWING UTILITY LOCATIONS PRIOR TO THE BEGINNING OF CONSTRUCTION AND SHOULD REQUEST THAT ANY EXISTING LINES BE REPAIRED.
4. CITY OF WICHITA WATER DEPARTMENT SOUTHWESTERN BELL TELEPHONE CO.
 455 NORTH MAIN STREET 104 NORTH BROADWAY
 262-4107 / 262-4100 252-5000
5. THE CONTRACTOR MUST ALSO NOTIFY THE TELEPHONE COMPANY 24 HOURS PRIOR TO ANY WORK THAT COULD AFFECT BURIED TELEPHONE LINES.
6. ALL STREETS SHOWN ON PLANS SHALL BE PAVED.
7. ALL FINISHED FLOOR ELEVATIONS, PAD ELEVATIONS, AND BUILDING LOCATIONS, SHALL BE SET ON PLANS WITH SHEET 8 OF THE "SITE PLAN-QUANTITY 10-1-79 FOR ARAGON APARTMENTS PREPARED BY RODGER A. DROBOS, ARCHITECT, P. A."
8. THE TYPE OF SEWER PIPE TO BE INSTALLED IS SHOWN P.L. 1 (CLASSIFIED 150 LB. & WALL 12 IN. THE SAME MATERIALS AS THE EXISTING STUB). ALL JOINTS, MANHOLES, AND EXHAUSTION VALVES TO BE INSTALLED ON PIPE TO THE CITY STREET MAINLINE. INCLUDING THE REMOVAL OF PIPE PLUGS, SHALL BE CONSIDERED NECESSARY TO THE PRICE BID FOR PIPE.



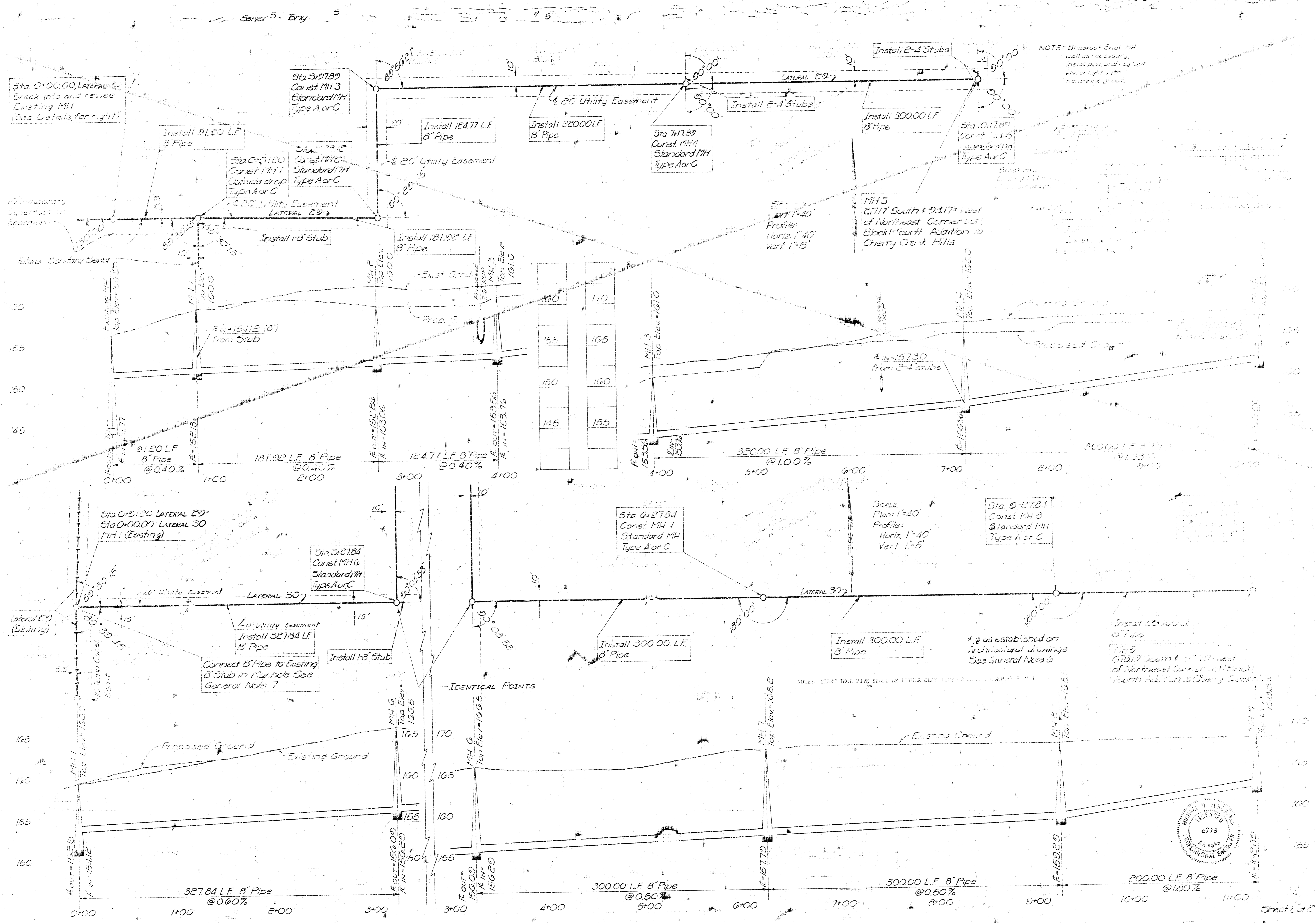
BENEFIT DISTRICT
 THE CITY OF WICHITA, KANSAS
 100 WEST WASHINGTON STREET
 WICHITA, KANSAS 67202

CITY OF WICHITA PROJECT NO. 468-76-245-80697-000-000-001

PLANS PREPARED BY
PROFESSIONAL ENGINEERING CONSULTANTS, P.A.
ENGINEERS
WICHITA, KANSAS



CITY OF WICHITA, KANSAS LATERAL 30-MAIN 17-WAR INDUSTRY SEWER TITLE SHEET C. W. LINK, R.E. CITY ENGINEER C. W. P. NO. 468-76-245-80697-000-000-001 PROFESSIONAL ENGINEERING CONSULTANTS, P.A. WICHITA, KANSAS 76004 JAN 1979



NOTE: Breakout Exst. MH Wall as necessary, install pipe, and regrade water tight with manhole gasket.

MH 5 6717 South & 2317 West of Northeast Corner Lot, Block Fourth Addition to Cherry Creek Hills

SCALE
Plan: 1"=40'
Profile: Horiz. 1"=40'
Vert. 1"=5'

1, 2 as established on architectural drawings See General Note 5

1, 2 as established on architectural drawings See General Note 5

NOTE: EIGHT INCH PIPE SHALL BE EITHER CLAY PIPE OR POLYETHYLENE PIPE

