

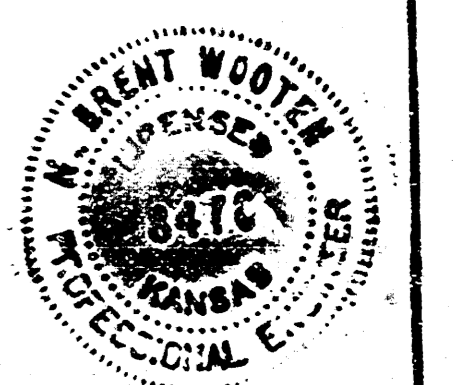
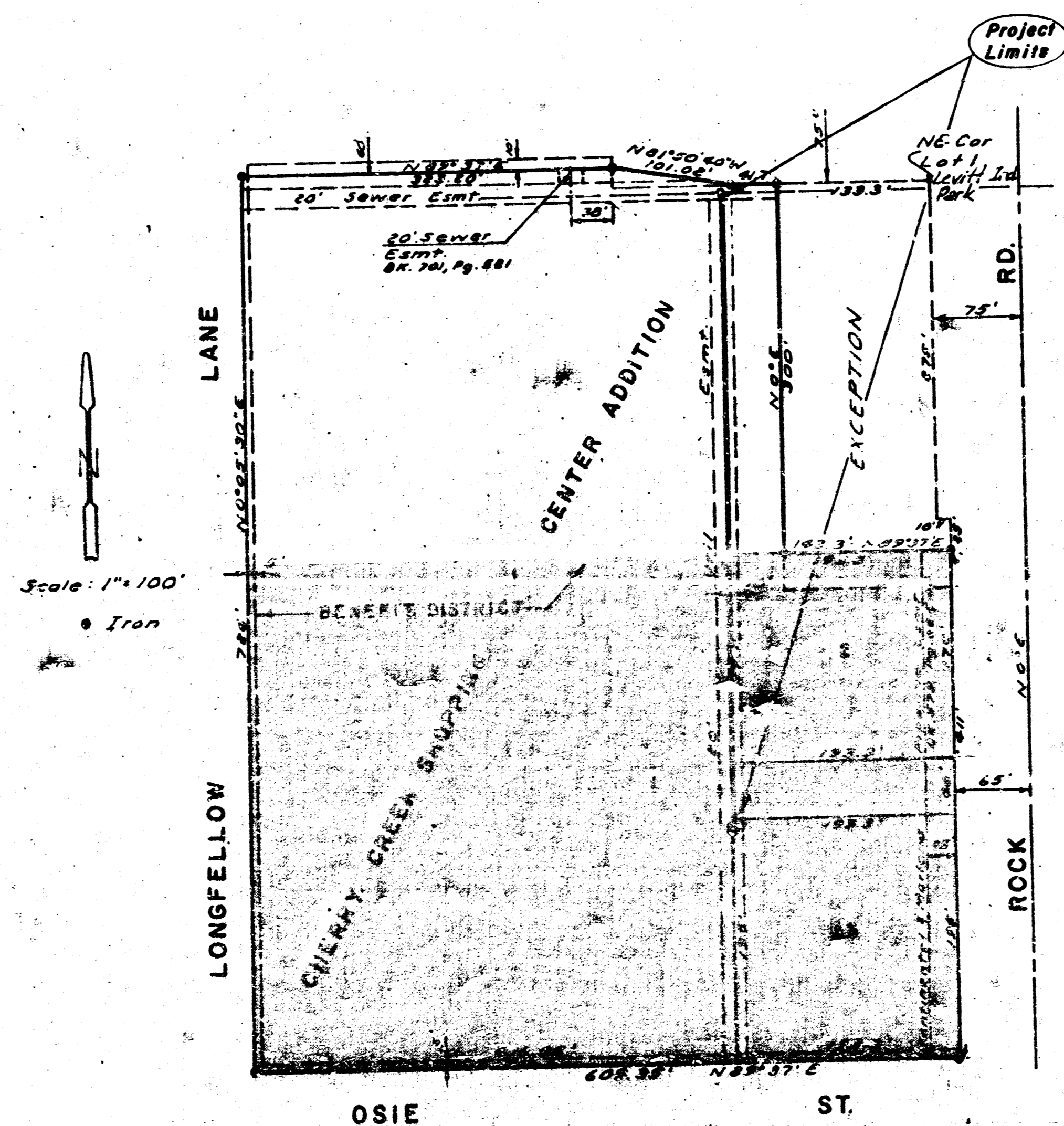
LATERAL 32, MAIN 17, WAR INDUSTRIES SEWER

Project No. 468-76-245-80821-000-000-001

CHERRY CREEK SHOPPING CENTER ADDITION

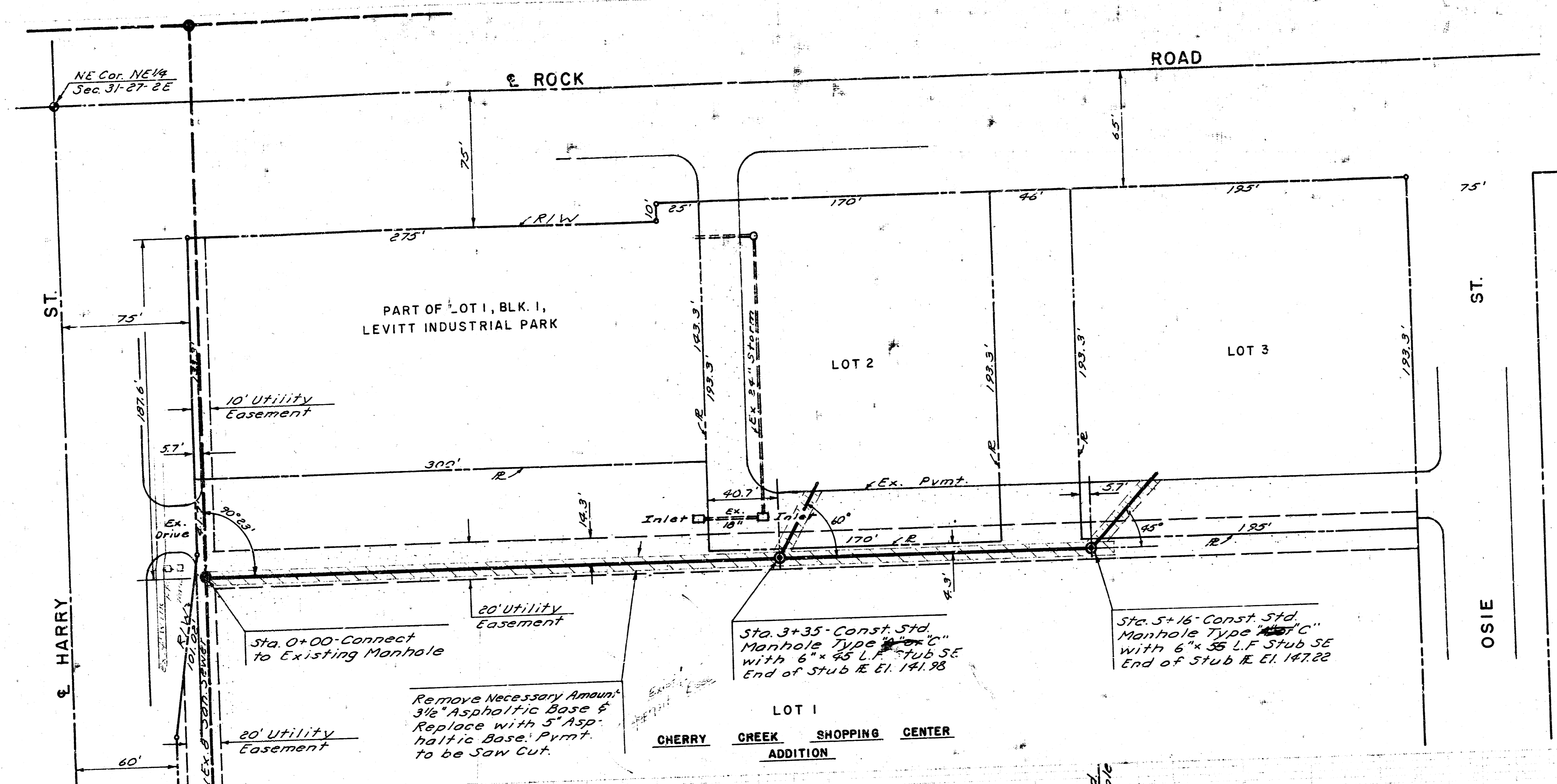
CITY OF WICHITA, KANSAS
MIKE LINDEBAK CITY ENGINEER

As Built
S & L
4-84



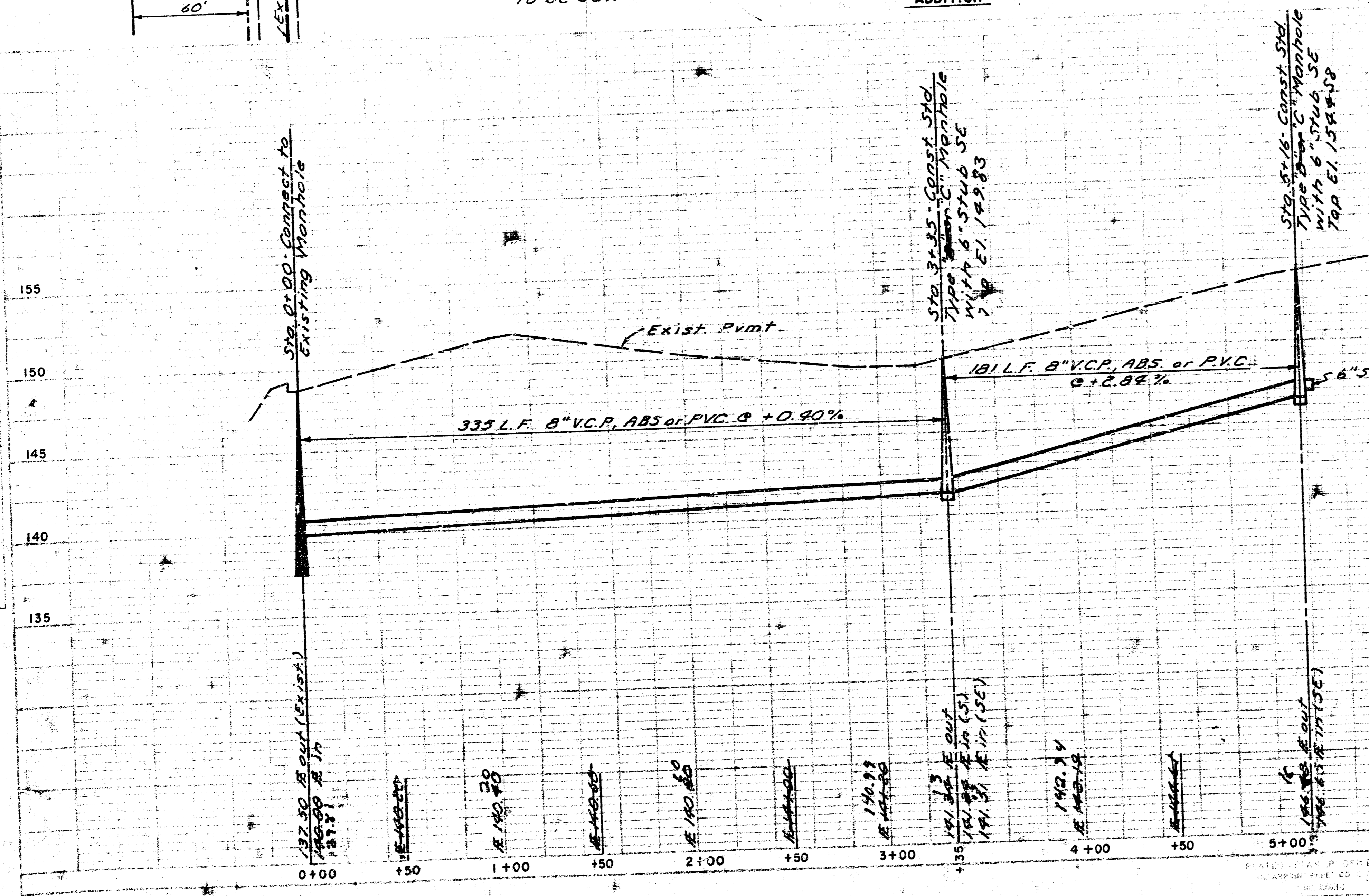
BAUGHMAN COMPANY, P.A.
SURVEYING & ENGINEERING
314/262-7271 • 330 LANZA • WICHITA, KANSAS 67211

Scale: Hor. 1" = 40'
Ver. 1" = 5'



As Built
J.L.L.
4-8-81

B.M. RR Spk. in PP 60' RT.
Sta. 0+90 El. 154.00



Note - Contractor to determine amount of asphalt base to be removed and replaced to install the sewer line. Asphalt to be saw cut at the removal lines.
Contractor is to mark the 6" stubs by fastening green colored plastic flagging tape to the end of the stub extension and flag to be extended to the ground surface as the excavation is backfilled and attached to a wooden stake such that the colored tape is visible when the project is complete.
Ends of the pipe stubs shall be capped or plugged using fittings furnished by the manufacturer of the pipe.

LATERAL 32, MAIN 17
WAR INDUSTRIES SEWER
Cherry Creek Shopping Center Addition
Wichita, Kansas
Project No. 468-76-80821-000-001

BAUGHMAN COMPANY, P.A.
SURVEYING & ENGINEERING
314/263-7271 • 230 LANIA • WICHITA, KANSAS 67211

17 5 3 1 1/2