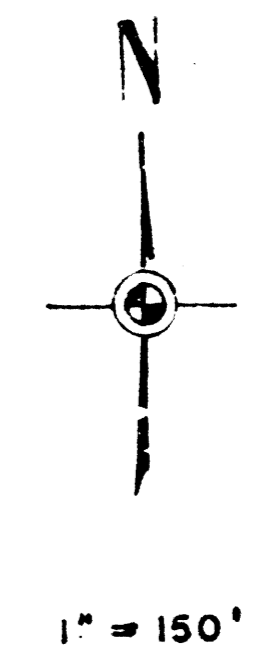
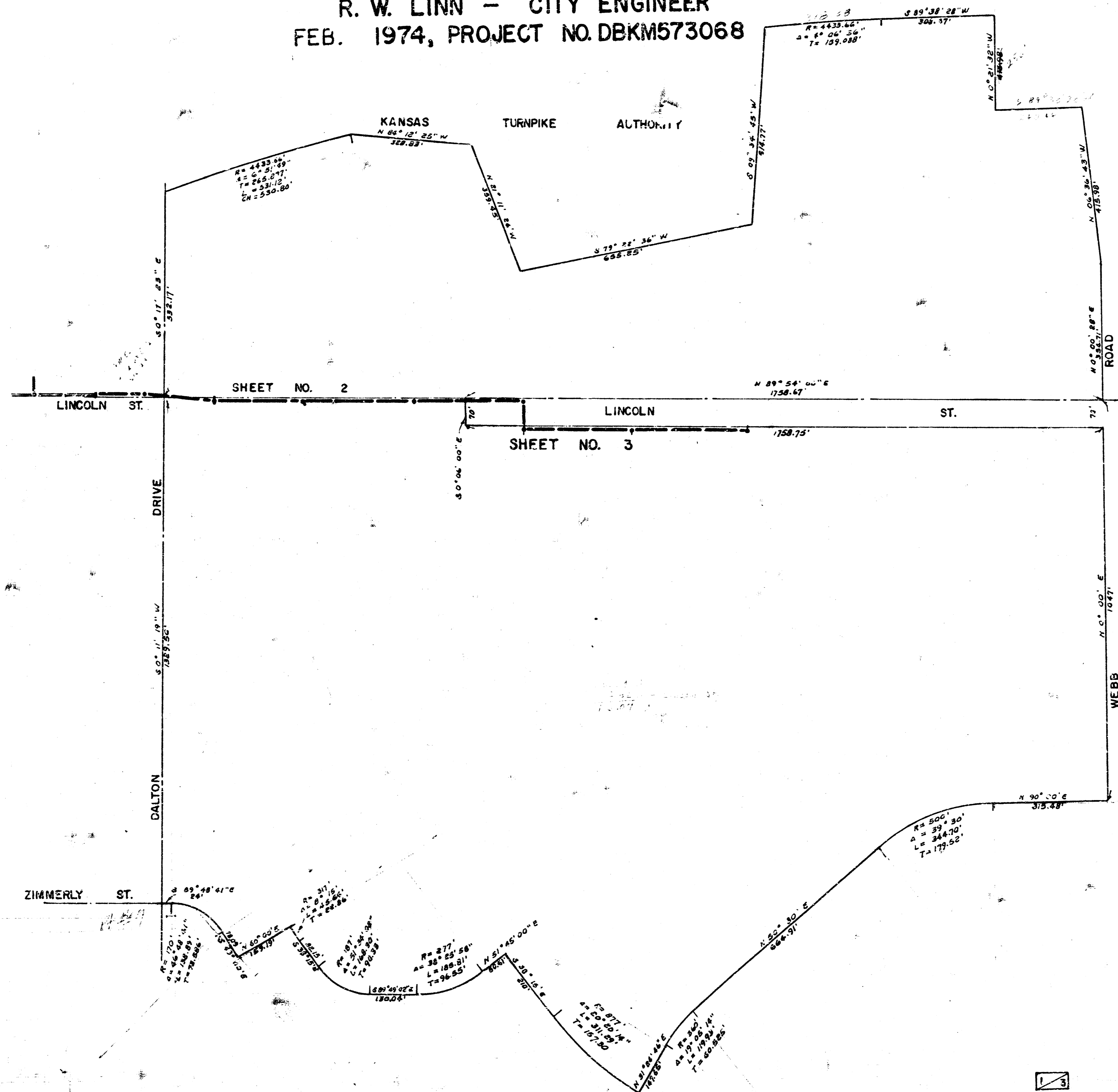
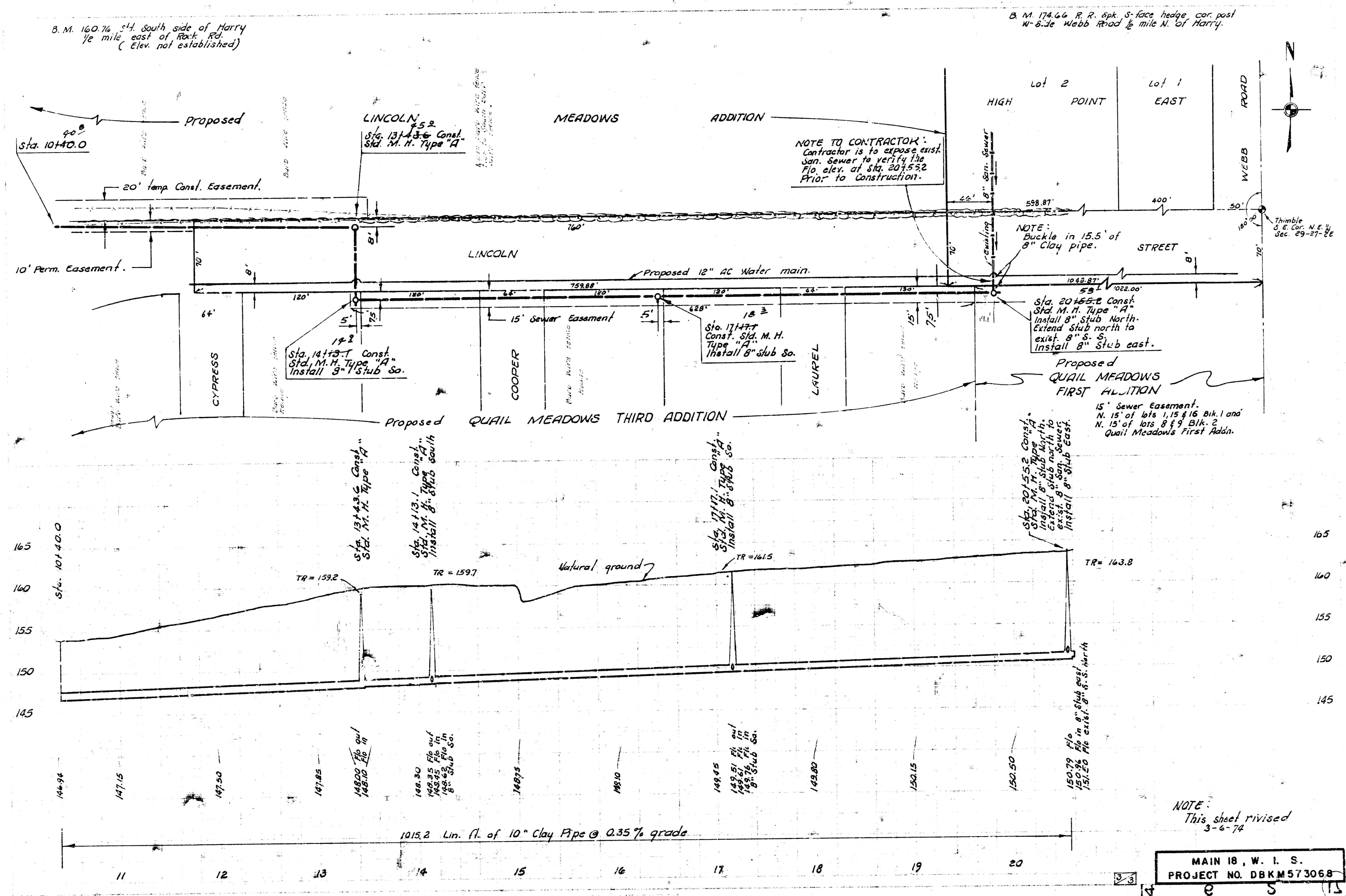


MAIN 18, WAR INDUSTRIES SEWER
CITY OF WICHITA, KANSAS
R. W. LINN - CITY ENGINEER
FEB. 1974, PROJECT NO. DKM573068



"As Built" Final Meas. 269-Y
 NOTE:
 Sheet No. 3 Revised
 March 6, 1974.



B.M. 160.76 Sta. South side of Harry
1/2 mile east of Rock Rd.
(Elev. not established)

B.M. 174.66 R.R. Spk. S-face hedge cor. post
W-side Webb Road 1/2 mile N. of Harry.

NOTE TO CONTRACTOR:
Contractor is to expose exist.
san. sewer to verify the
fio. elev. at sta. 20155.2
Prior to construction.

NOTE:
Buckle in 15.5' of
8" Clay pipe.

Sta. 20155.2 Const.
Std. M.H. Type "A"
Install 8" stub North.
Extend stub north to
exist. 8" S.S.
Install 8" stub east.

Proposed
QUAIL MEADOWS
FIRST ADDITION
15' Sewer Easement.
N. 15' of lots 1, 15 & 16 Blk. 1 and
N. 15' of lots 8 & 9 Blk. 2
Quail Meadows First Addn.

NOTE:
This sheet revised
3-6-72

MAIN 18, W. I. S.
PROJECT NO. DBKM573068

