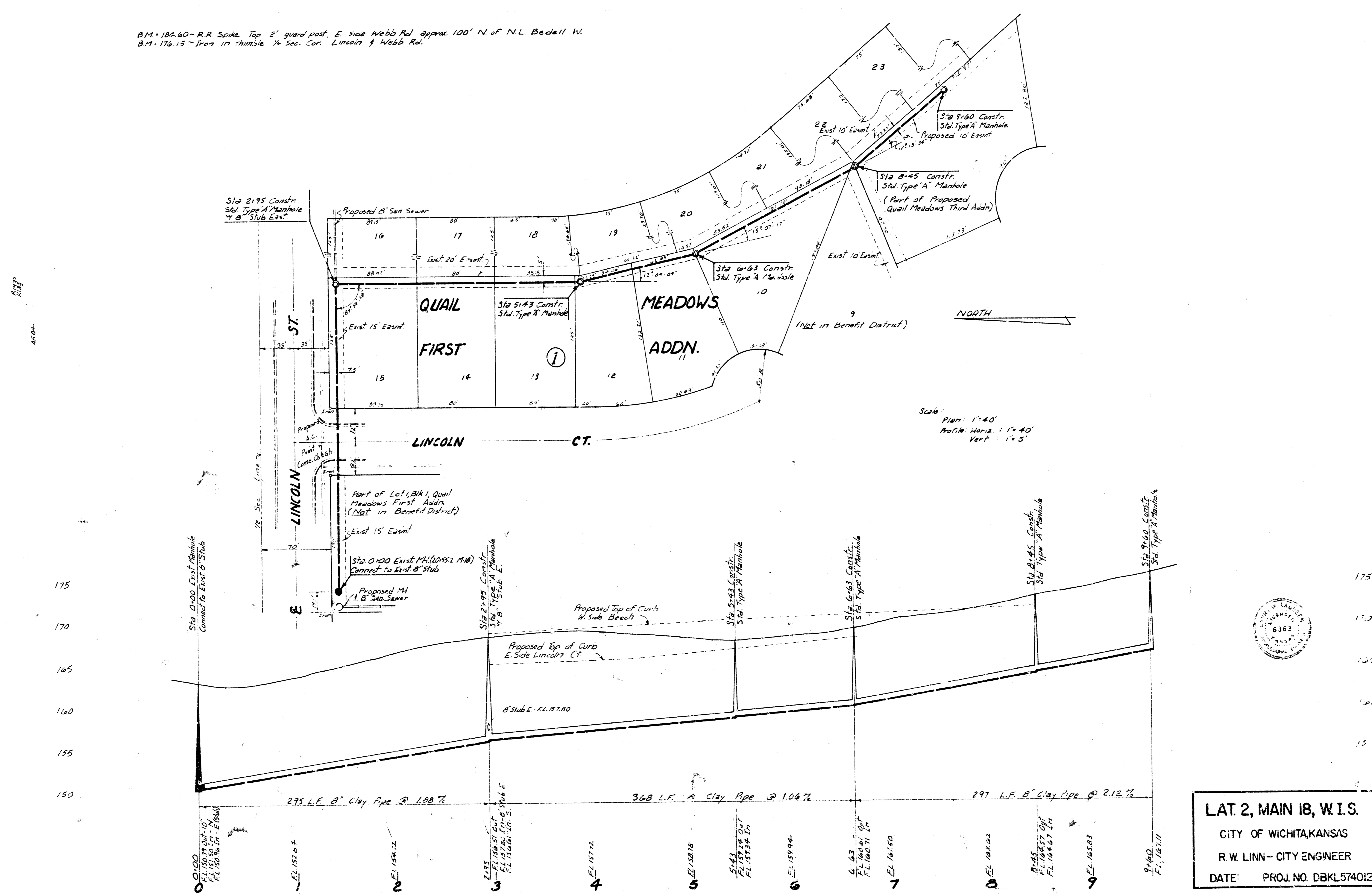


B.M. 184.60 - R.R. Spike, Top 2' guard post, E. side Webb Rd approx 100' N. of N.L. Bedell W.
 B.M. 176.15 - Iron in thimble 1/4 Sec. Cor. Lincoln & Webb Rd.



LAT. 2, MAIN 18, W. I. S.
 CITY OF WICHITA, KANSAS
 R. W. LINN - CITY ENGINEER
 DATE: PROJ. NO. DBKL574012



175
 170
 165
 160
 155
 150

14 10 12 13