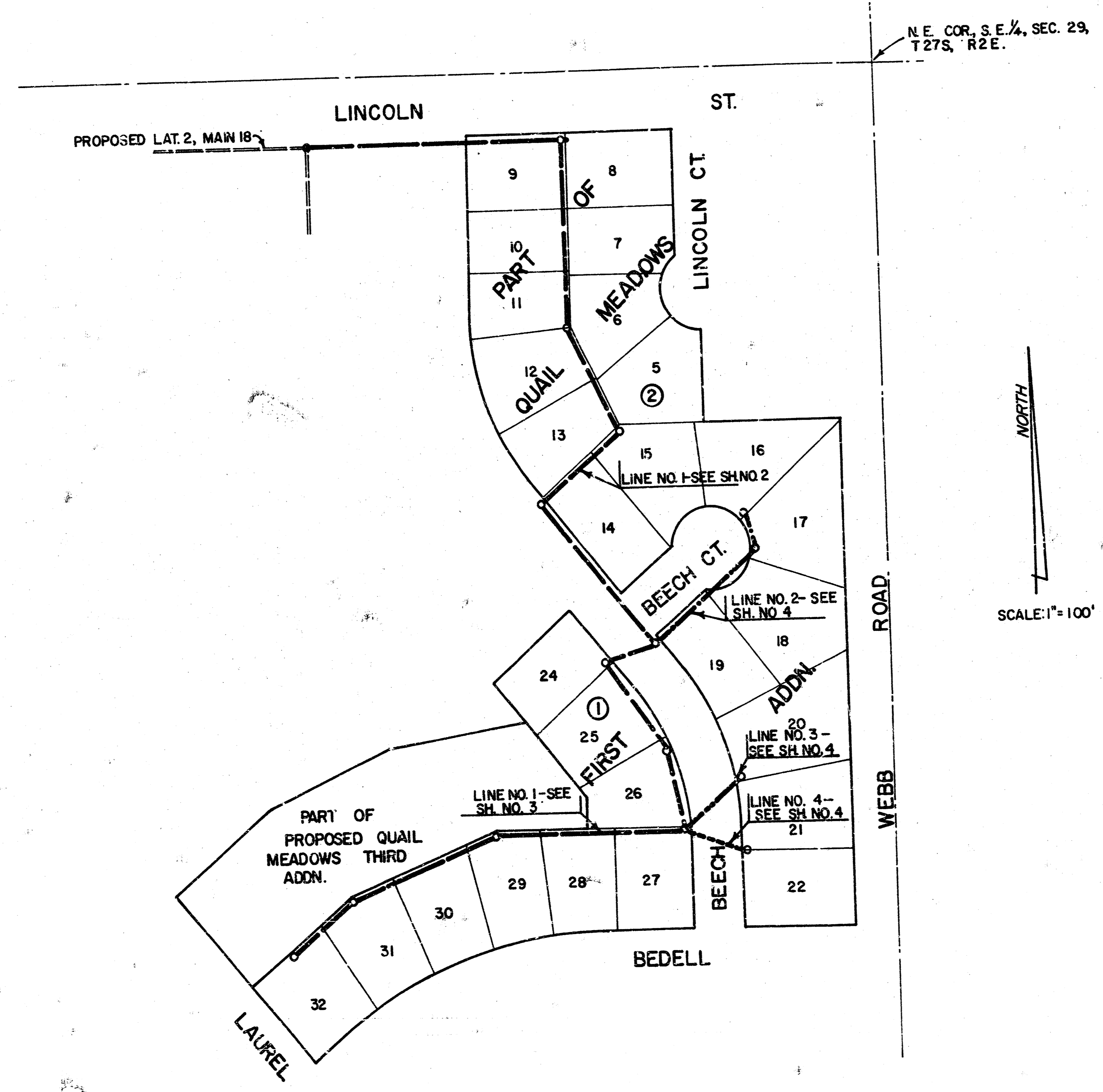


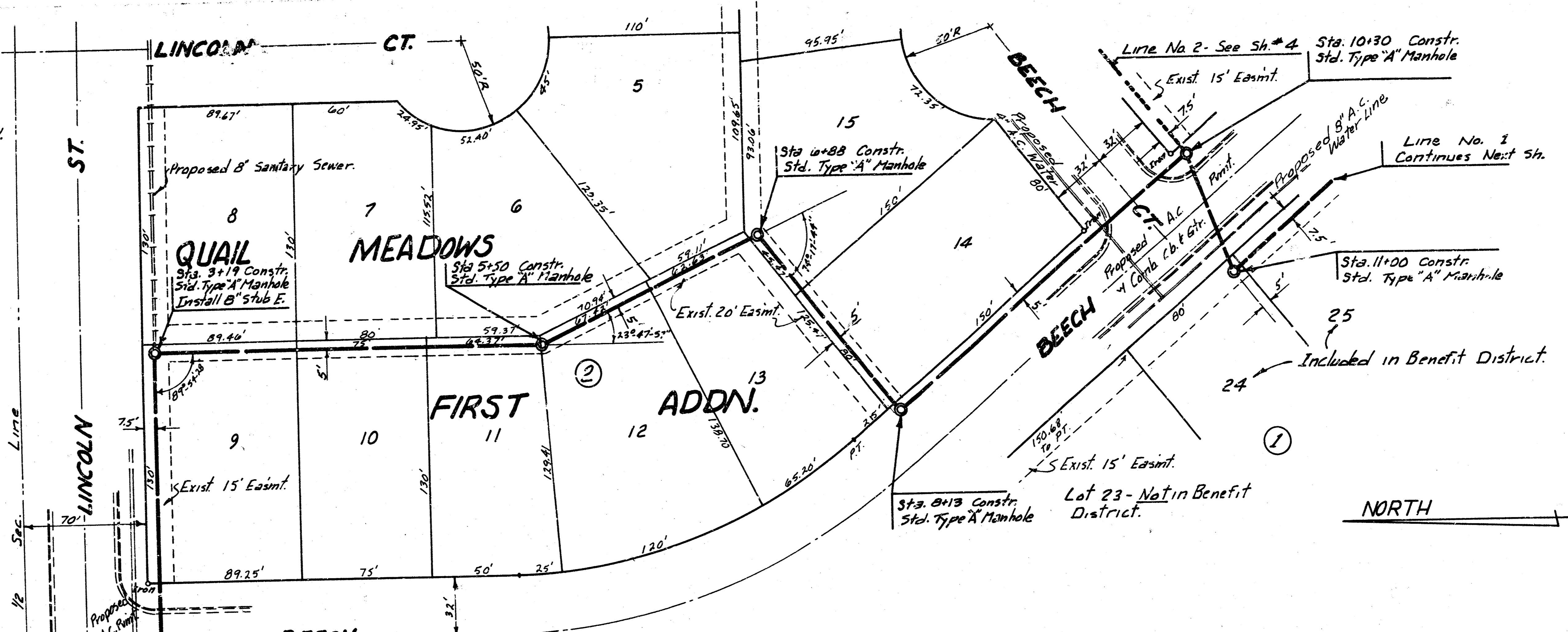
# LAT 3, MAIN 18, WAR INDUSTRIES SEWER

CITY OF WICHITA, KANSAS  
R. W. LINN — CITY ENGINEER

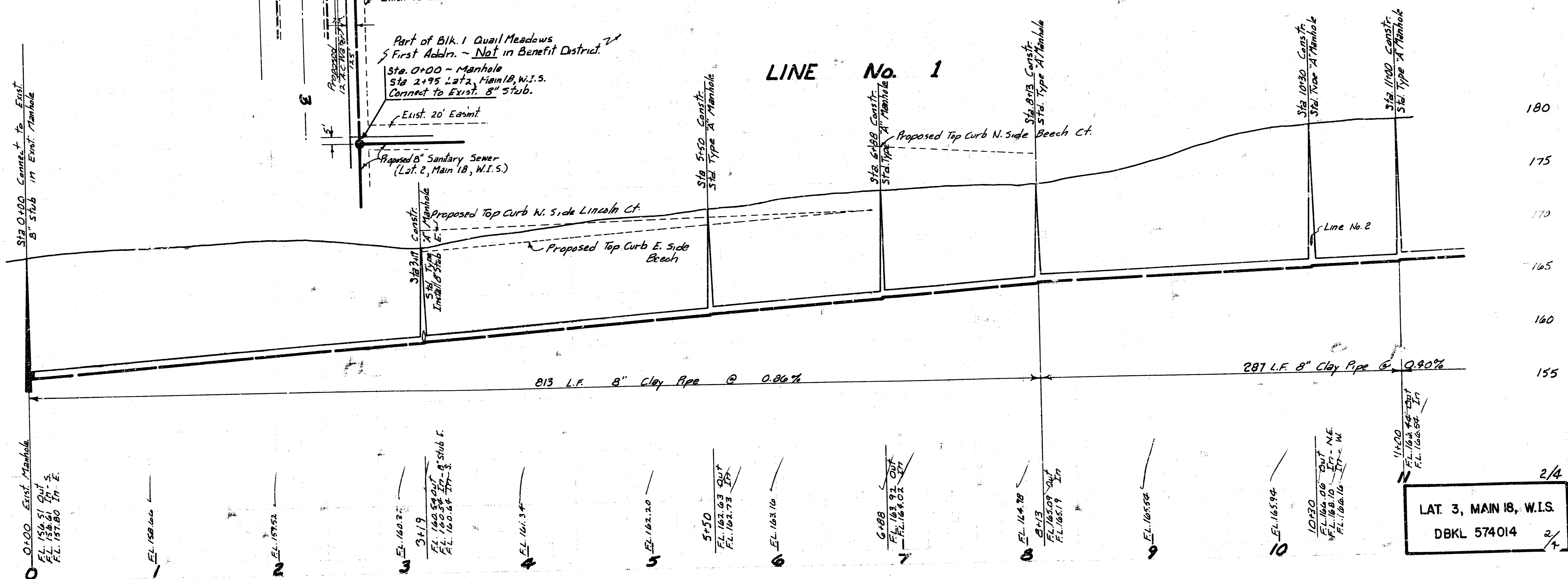
DATE: \_\_\_\_\_ PROJ. NO. DBKL574014



BM=184.60 - RR. Spike Top 2' Guard Post - Side Webb Rd.  
 Approx. 100' N. of N.L. Bedell W.  
 BM=174.71 - RR. Spike Side Corner Post Approx. 50' E. of  
 1/4 Sec. Corner Lincoln & Webb Rd.  
 BM=176.15 - Iron in Thimble 1/4 Sec. Corner Lincoln & Webb Rd.



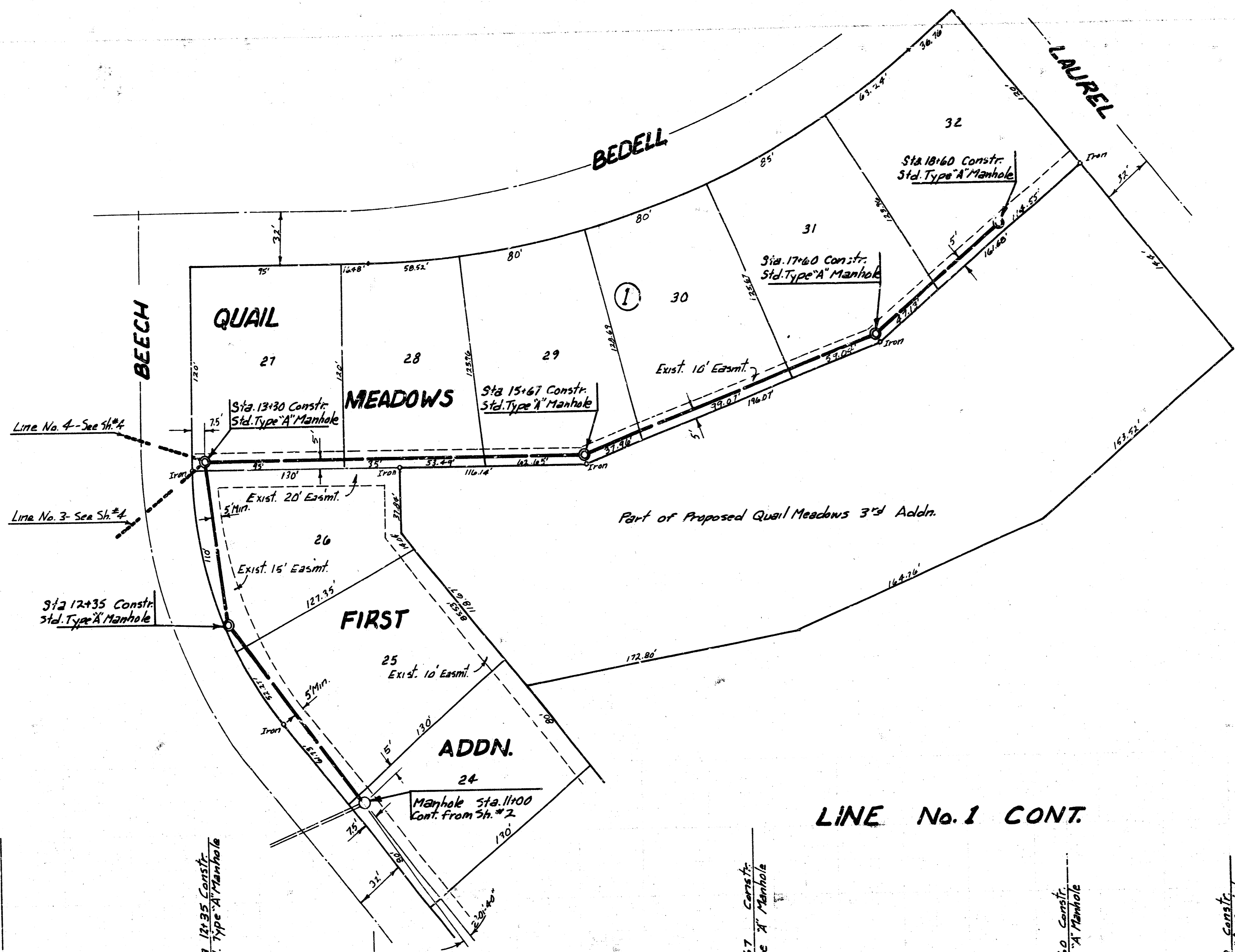
Scale:  
 Plan: 1"=40'  
 Profile: Horiz: 1"=40'  
 Vert: 1"=5'



LAT 3, MAIN 18, W.I.S.  
 DBKL 574014

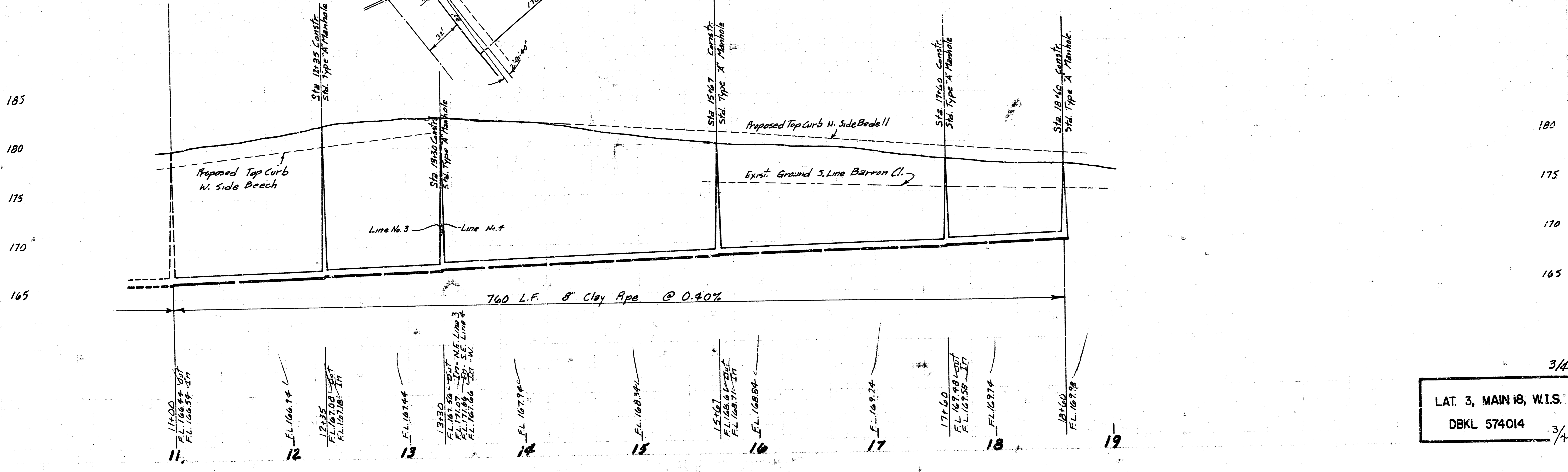
2/4

2/4

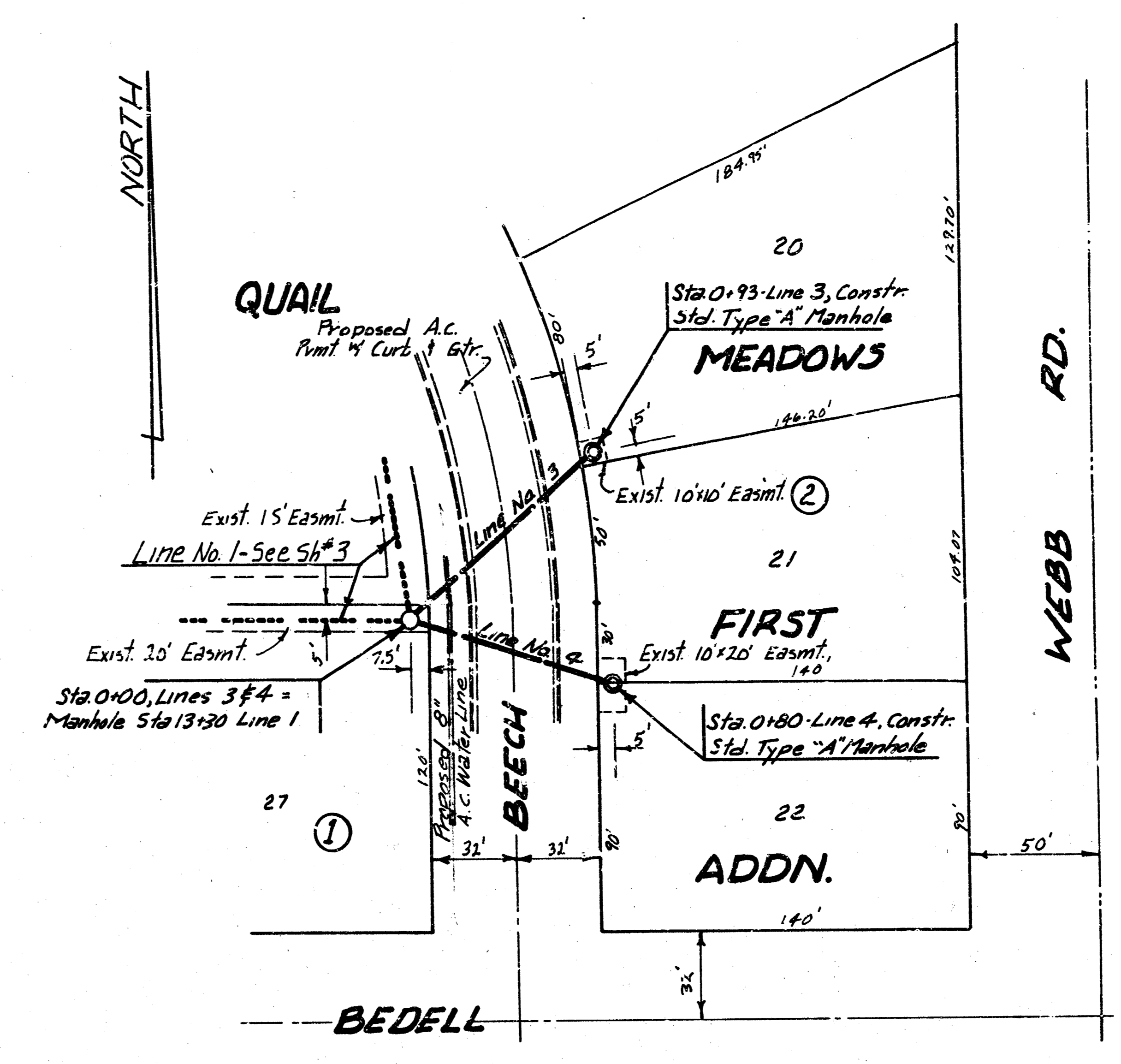
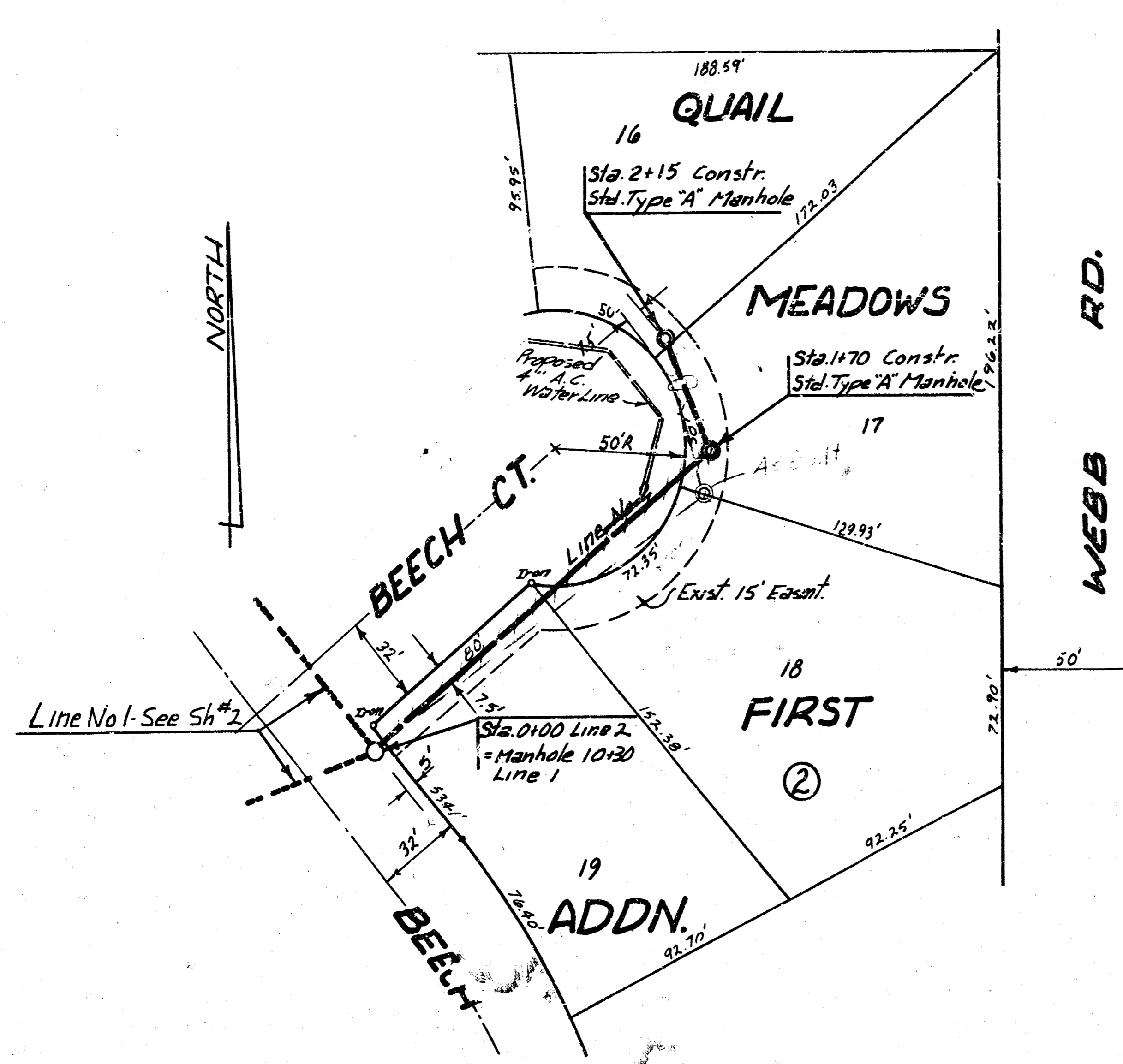


LINE No. 1 CONT.

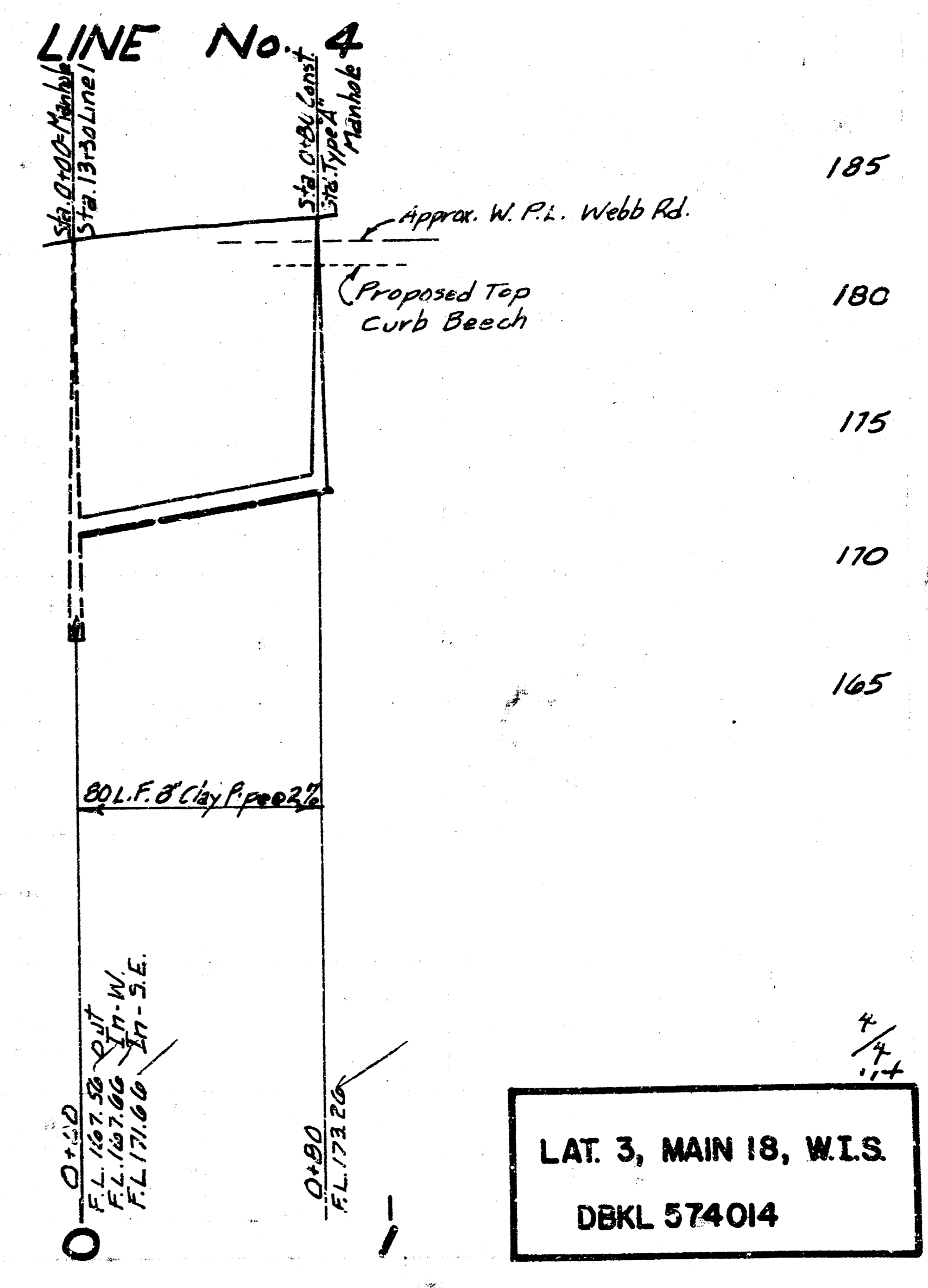
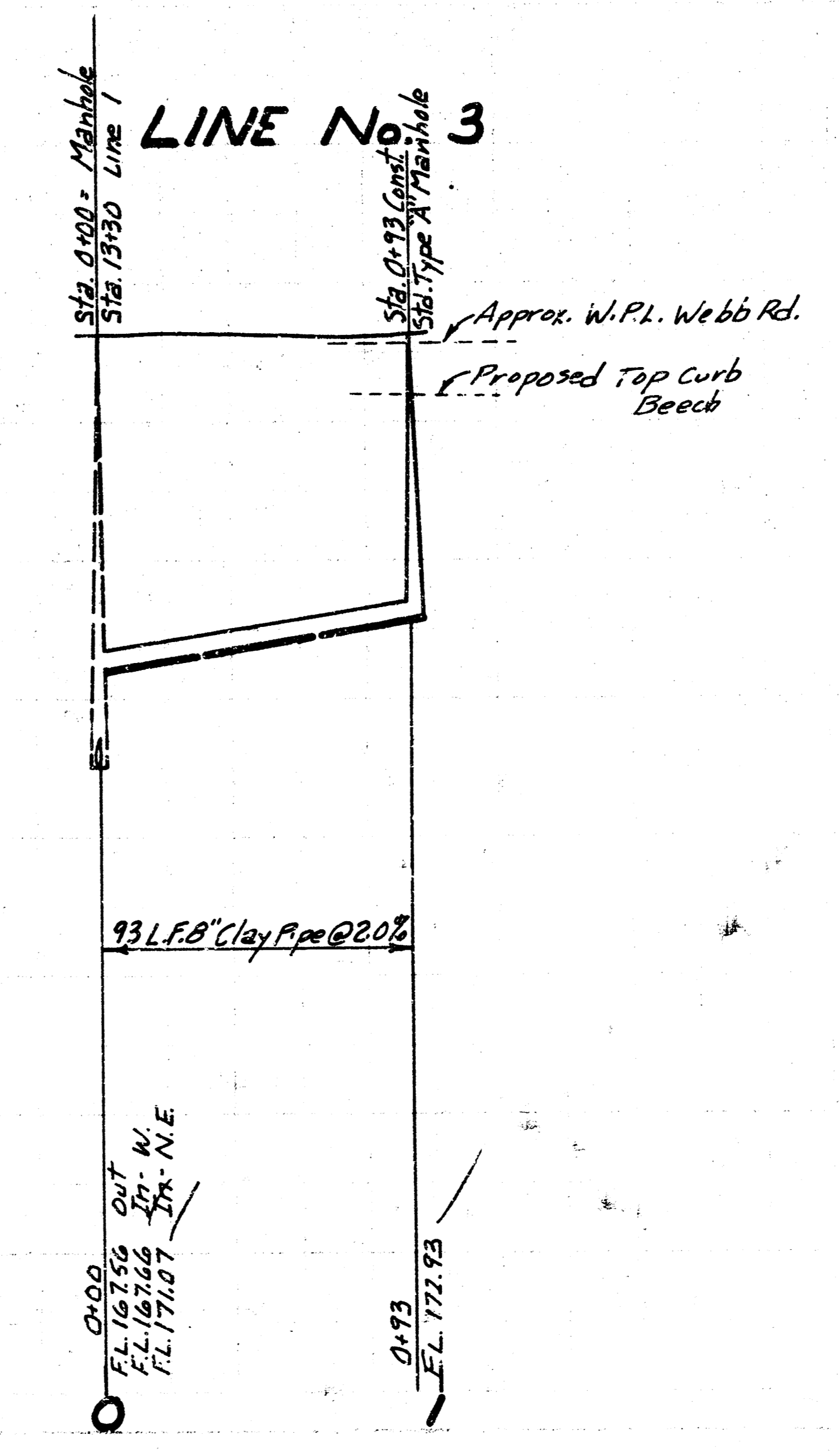
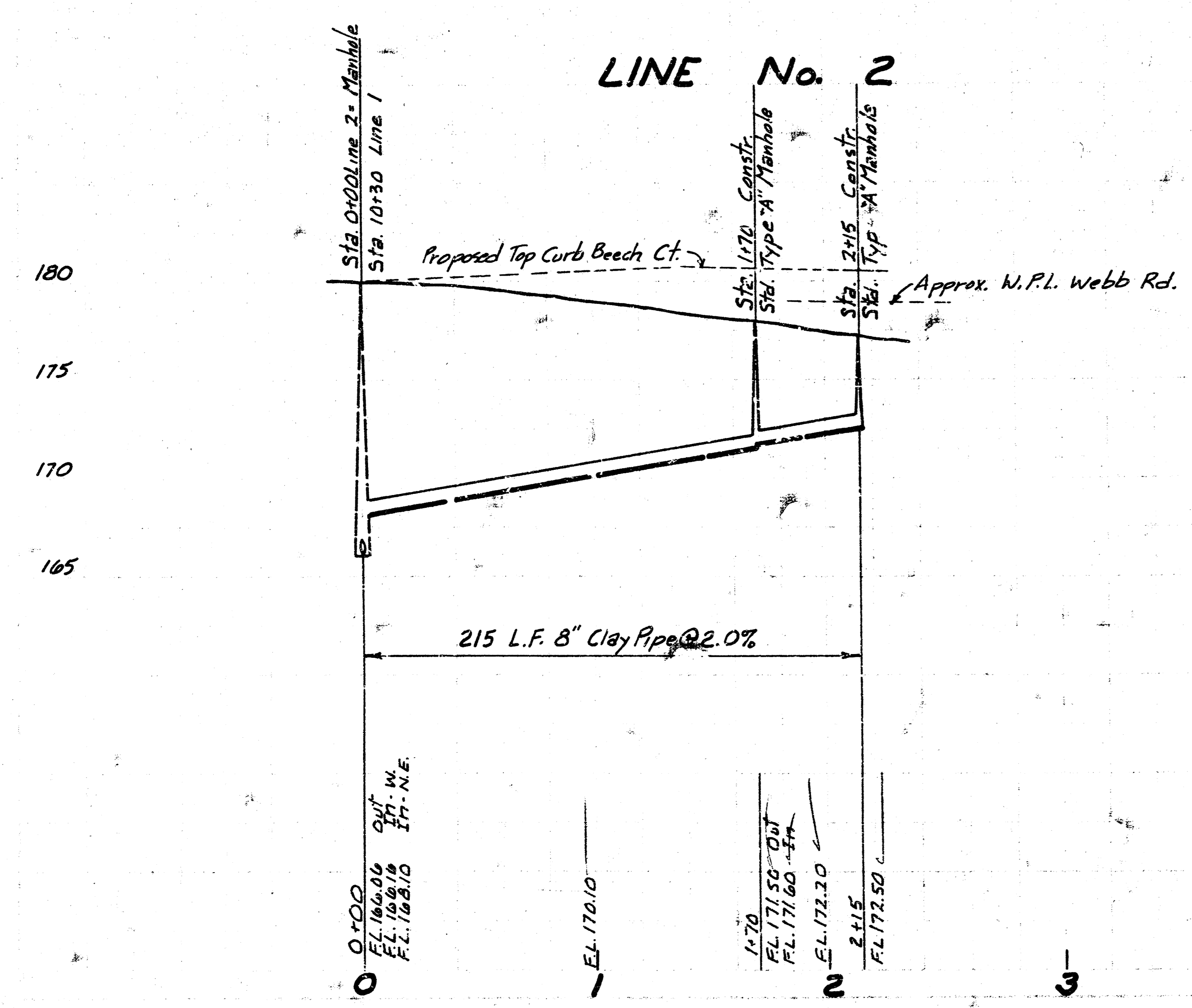
Scale: Plan: 1"=40'  
 Profile: Horiz: 1"=40'  
 Vert: 1"=5'



LAT. 3, MAIN 18, W.I.S.  
 DBKL 574014



Scale:  
 Plan: 1" = 40'  
 Profile: Horiz: 1" = 40'  
 Vert: 1" = 5'



LAT. 3, MAIN 18, W.I.S.  
 DBKL 574014