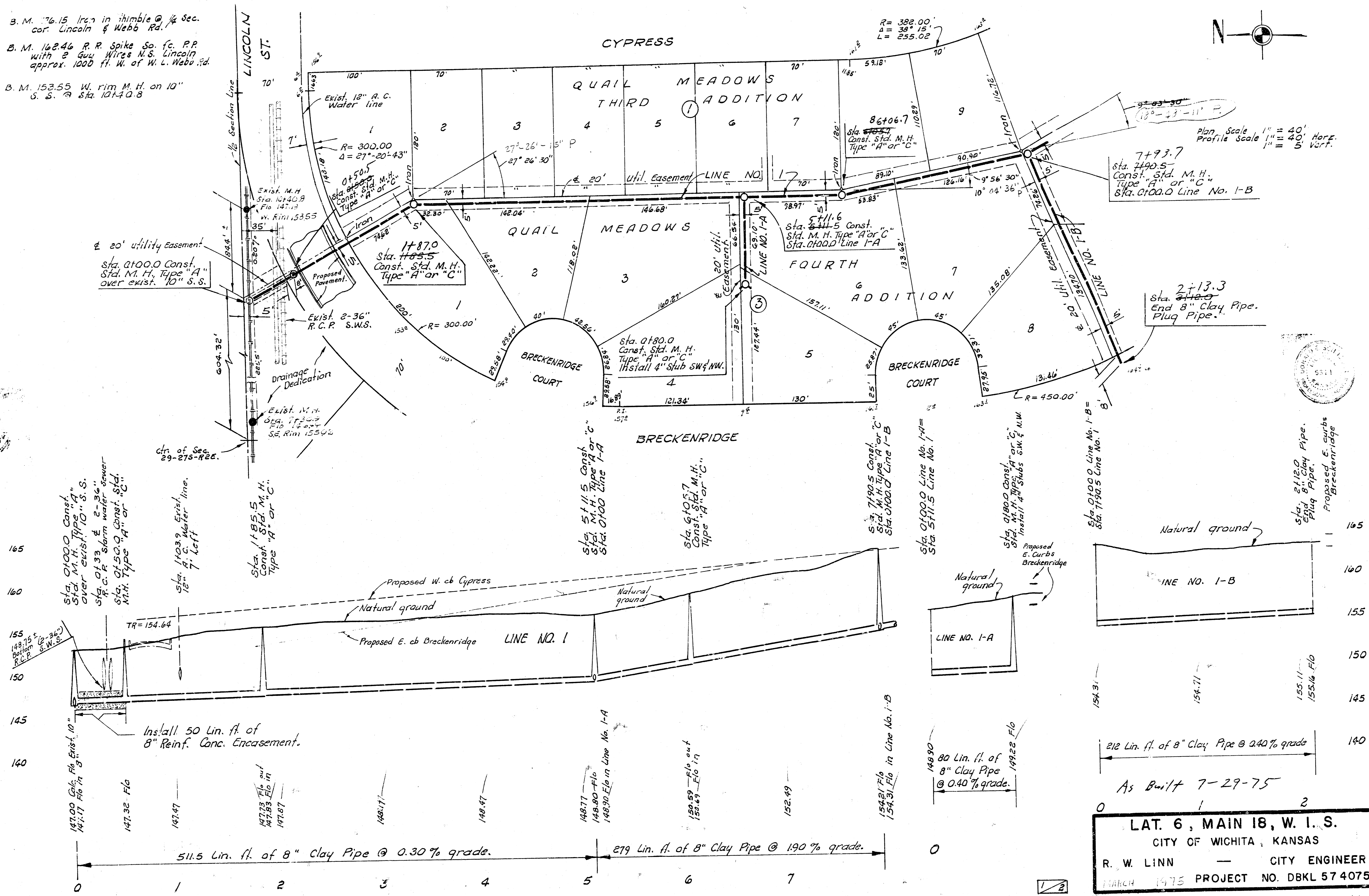


B. M. 76.15 Iron in thimble @ 1/4 Sec. cor. Lincoln & Webb Rd.
 B. M. 162.46 R.R. Spike So. fc. P.P. with 2 Guy Wires N.S. Lincoln approx. 1000 ft. W. of W. L. Webb Rd.
 B. M. 153.55 W. rim M.H. on 10" S.S. @ Sta. 10+40.8

P. S. D.
 J. R. W.

39



LAT. 6, MAIN 18, W. I. S.
 CITY OF WICHITA, KANSAS
 R. W. LINN — CITY ENGINEER
 MARCH 1975 PROJECT NO. DBKL 57 4075

