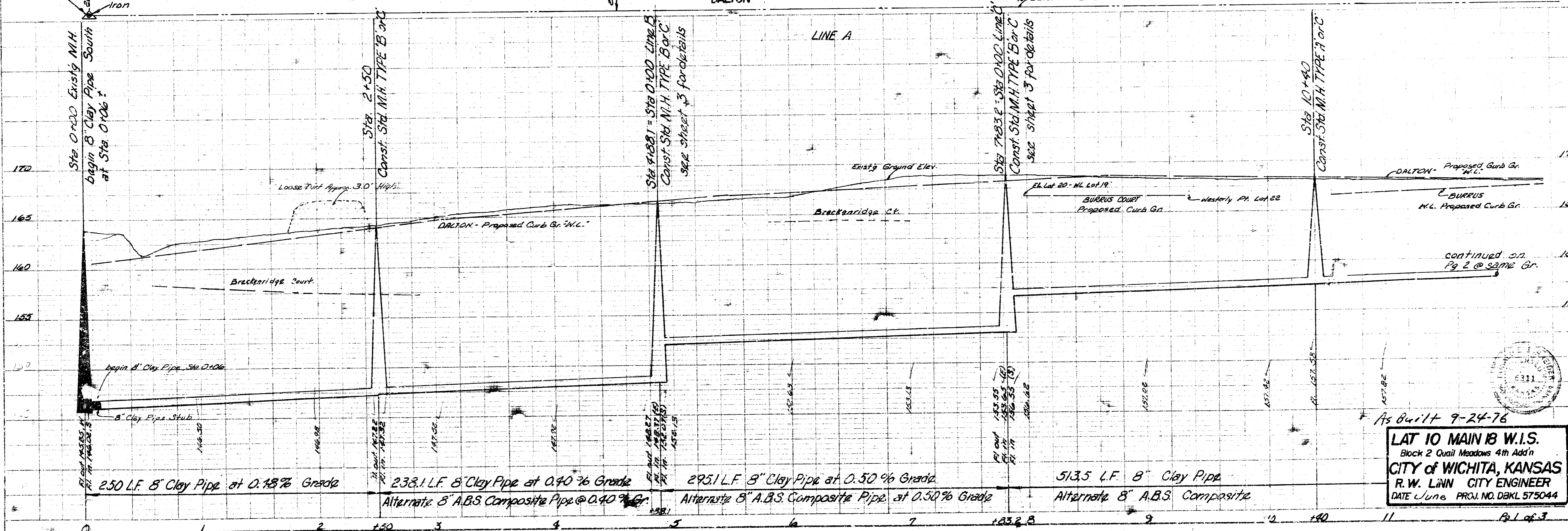
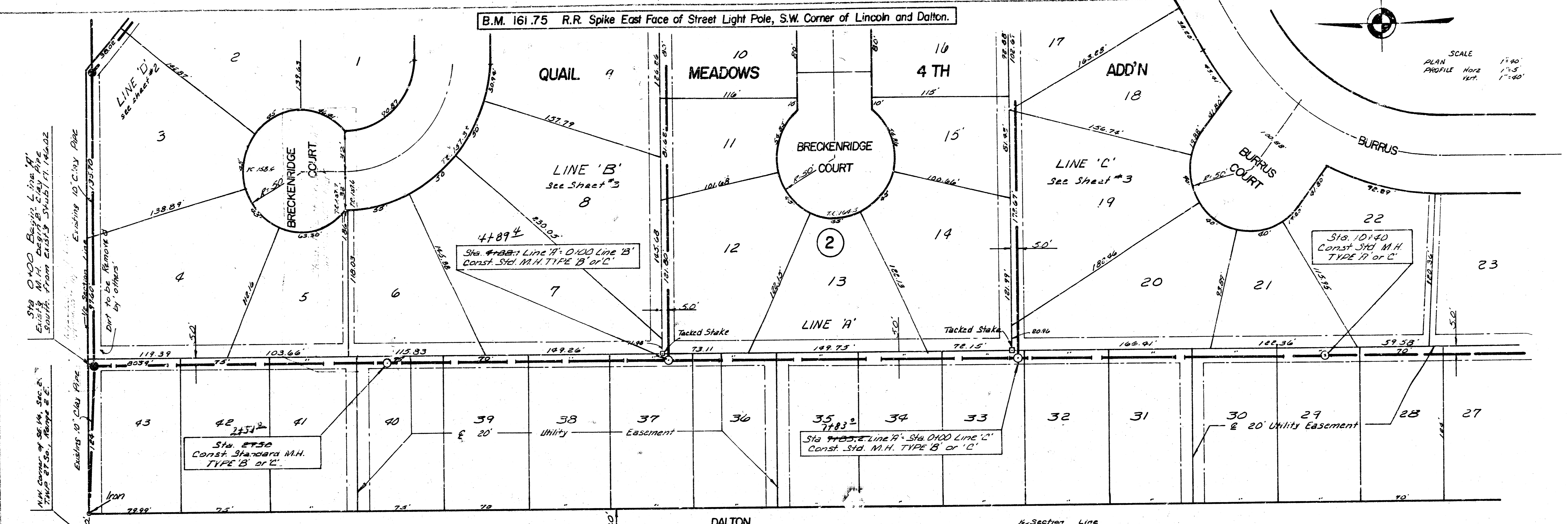


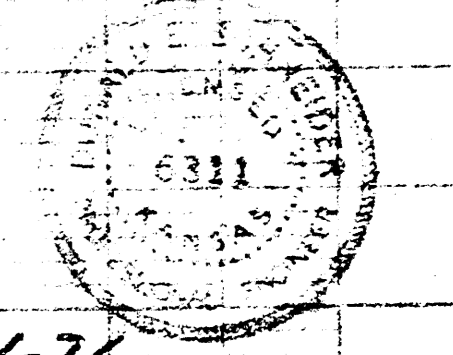
B.M. 161.75 R.R. Spike East Face of Street Light Pole, S.W. Corner of Lincoln and Dalton.

SCALE
PLAN 1"=40'
PROFILE Horiz 1"=5'
Vert 1"=40'



PLAN
DATE 1-26-76
BY R.W. LINN

PROFILE
DATE 1-26-76
BY R.W. LINN

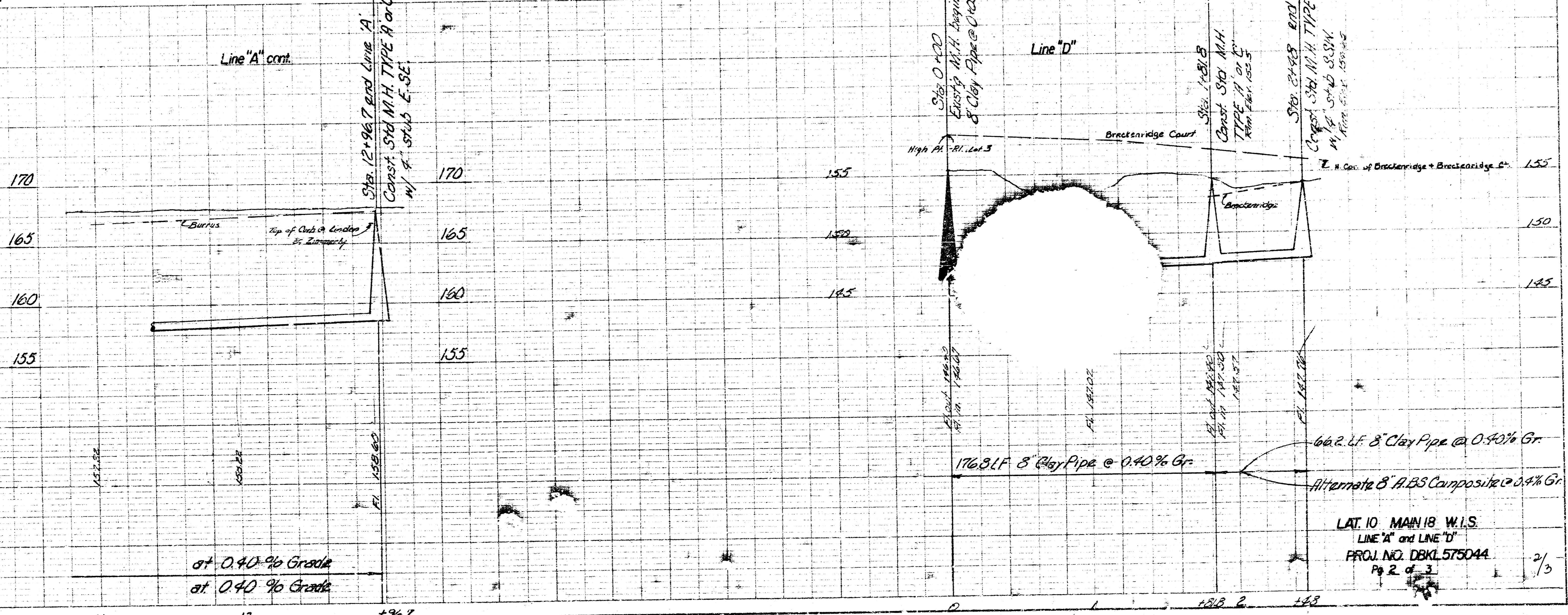
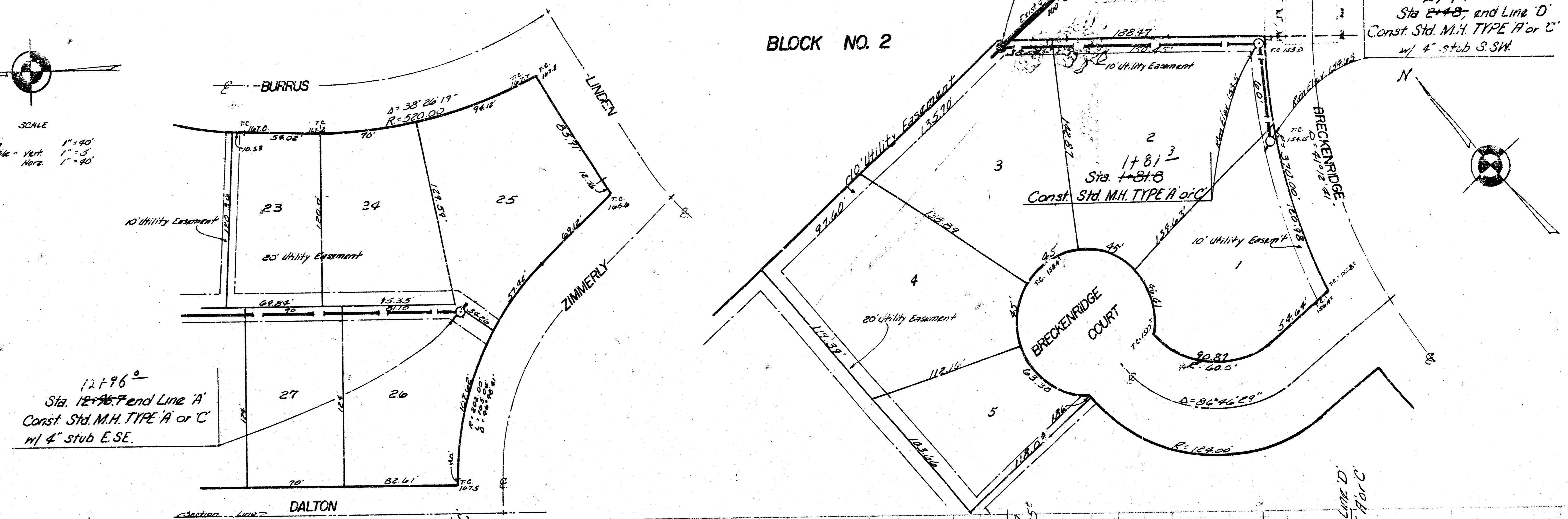
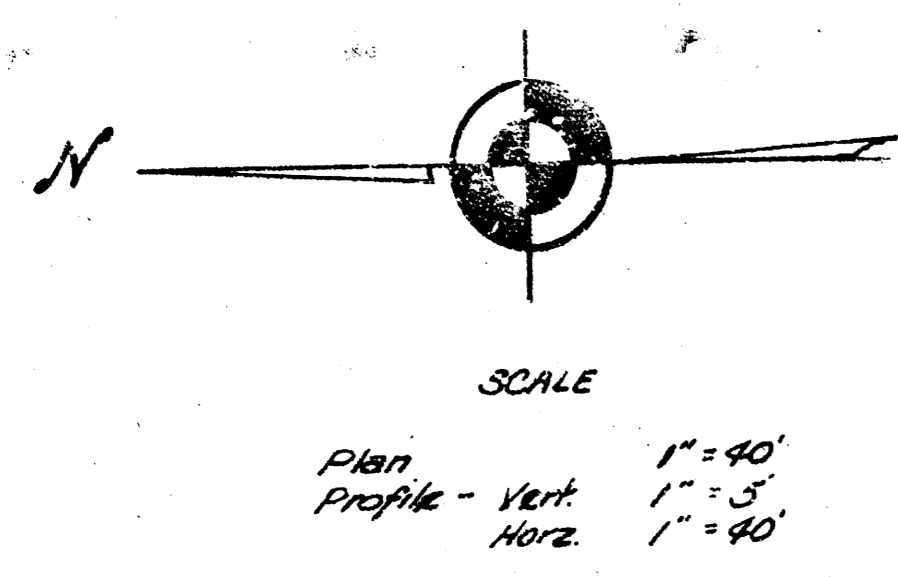


As Built 9-24-76
LAT 10 MAIN B W.I.S.
Block 2 Quail Meadows 4th Add'n
CITY OF WICHITA, KANSAS
R. W. LINN CITY ENGINEER
DATE June PROJ. NO. DBKL 575044

B.M. - 156.87 - Top of Curb, So. End of Radius, S.W. Corner of Cypress and Lincoln.

QUAIL MEADOWS FOURTH ADDITION

BLOCK NO. 2

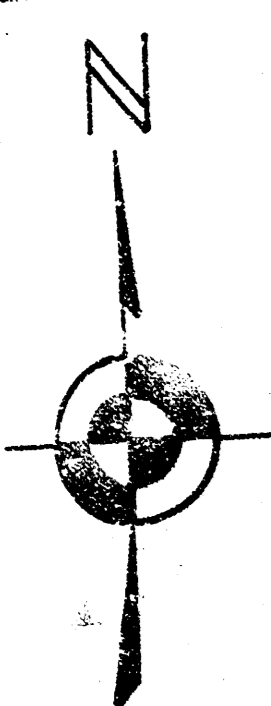


PLAN
NO. 156.87
DATE: 12/15/03

PROFILE
NO. 156.87
DATE: 12/15/03

B.M. 161.75 R.R. Spike East Face of Street Light Pole, S.W. Corner of Lincoln and Dalton

QUAIL MEADOWS FOURTH
BLOCK NO. 2



SCALE
PLAN 1" = 40'
PROFILE Vert. 1" = 5'
Horz. 1" = 40'

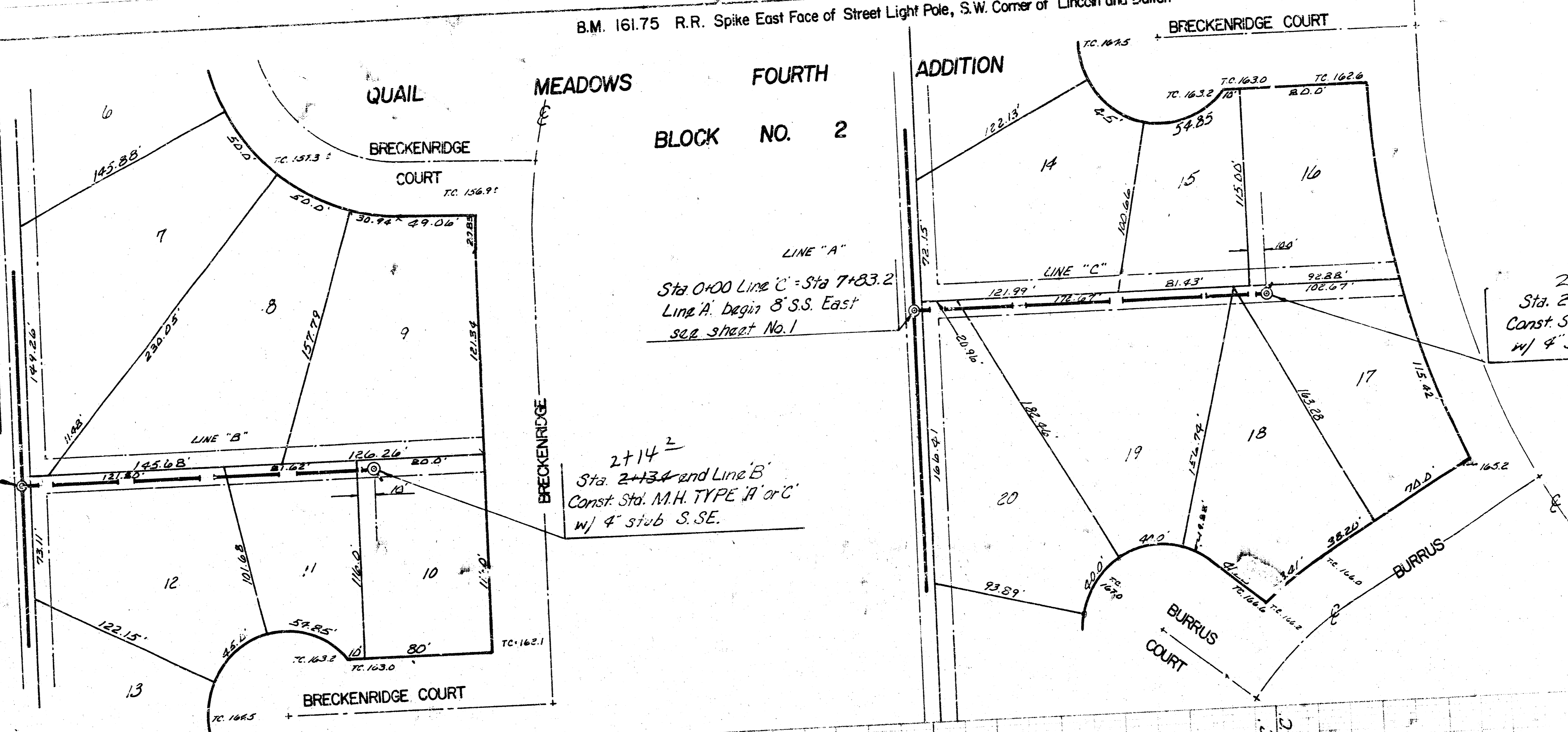
LINE "A"
SHEET NO. 1
Sta 0+00 Line "B" = Sta 4+28.1
Line "A", begin 8" ABS Composite Pipe, East see sheet 1

LINE "A"
Sta 0+00 Line "C" = Sta 7+33.2
Line "A" begin 8" S.S. East
see sheet No. 1

2+14²
Sta. 2+13.4 end Line "B"
Const. Std. M.H. TYPE "A" or "C"
w/ 4" stub S.S.E.

2+13²
Sta. 2+13.4 end Line "C"
Const. Std. M.H. TYPE "A" or "C"
w/ 4" stub N.N.E.

SHRUBS
No. 1
No. 2
No. 3
No. 4
No. 5
No. 6
No. 7
No. 8
No. 9
No. 10
No. 11
No. 12
No. 13
No. 14
No. 15
No. 16
No. 17
No. 18
No. 19
No. 20



2134.1 F 8" ABS Composite Pipe at 0.25% Grade

2134.1 F 8" Clay Pipe at 0.40% Grade
Alternative 8" ABS Composite Pipe at 0.40% Grade

LAT. 10 MAIN 18 W.L.S.
LINE "B" and "C"
PROJ. NO. DBKL575044
Pg. 3 of 3