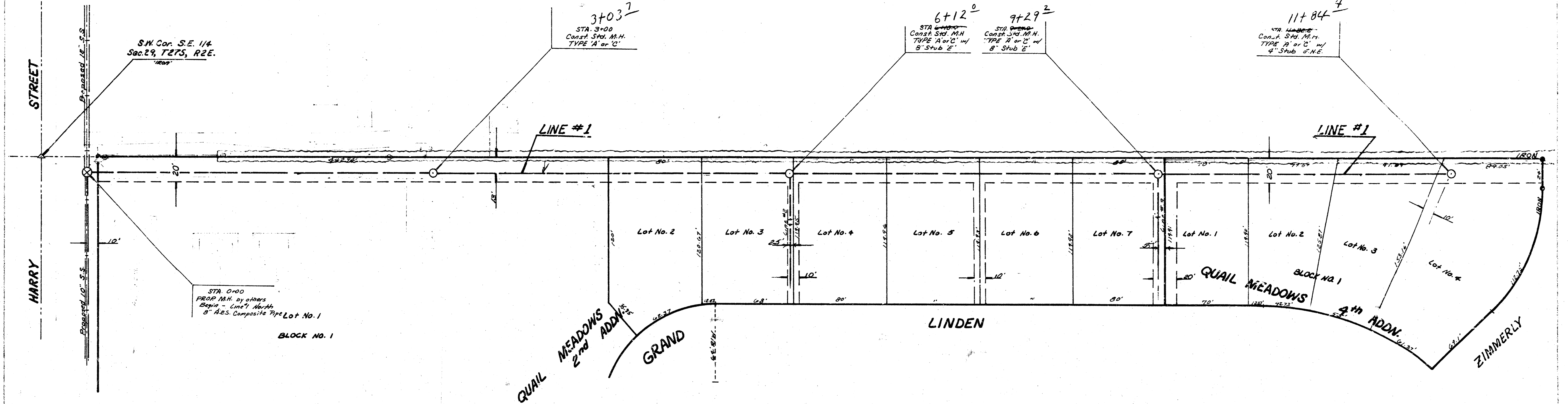


B.M. 161.82 - City Sta. Disc. on Harry St. 1/4 mile E. of Rock Rd.  
 42' N. & 48' S. of Quarter Section Corner.  
 Base Line: 40' N. of E. of Harry St. + 20' E. of W. Prop. Line.

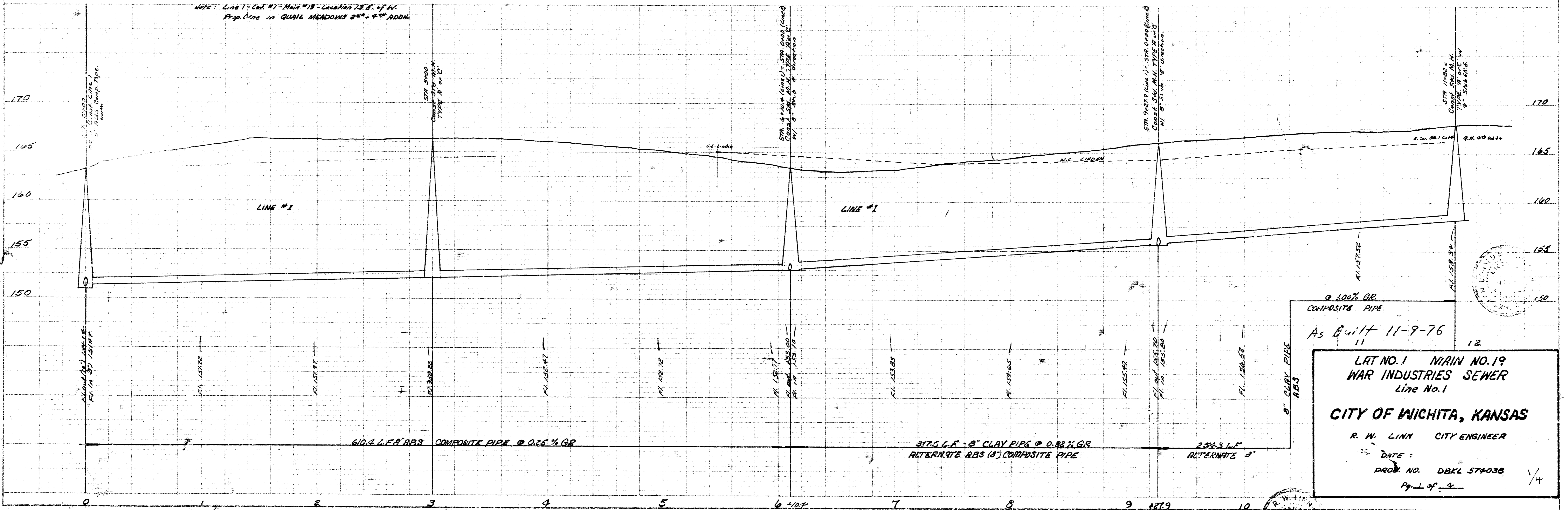
Scale: Plan: 1" = 40'  
 Profile: 1" = 5'

NOTE: Contractor is not to disturb 'HEDGE ROW'.  
 Contractor is to contact K.O.E. for exact location of Underground Line.

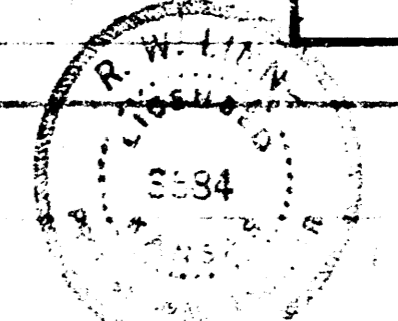
PLAN  
 1" = 40'

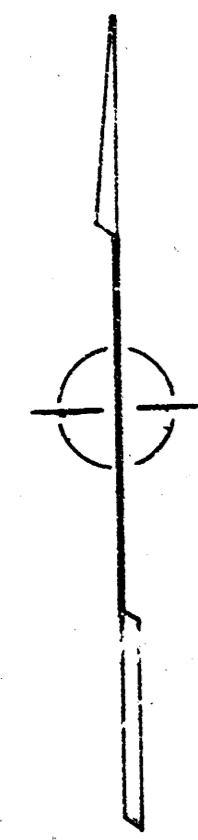


PROFILE  
 1" = 5'



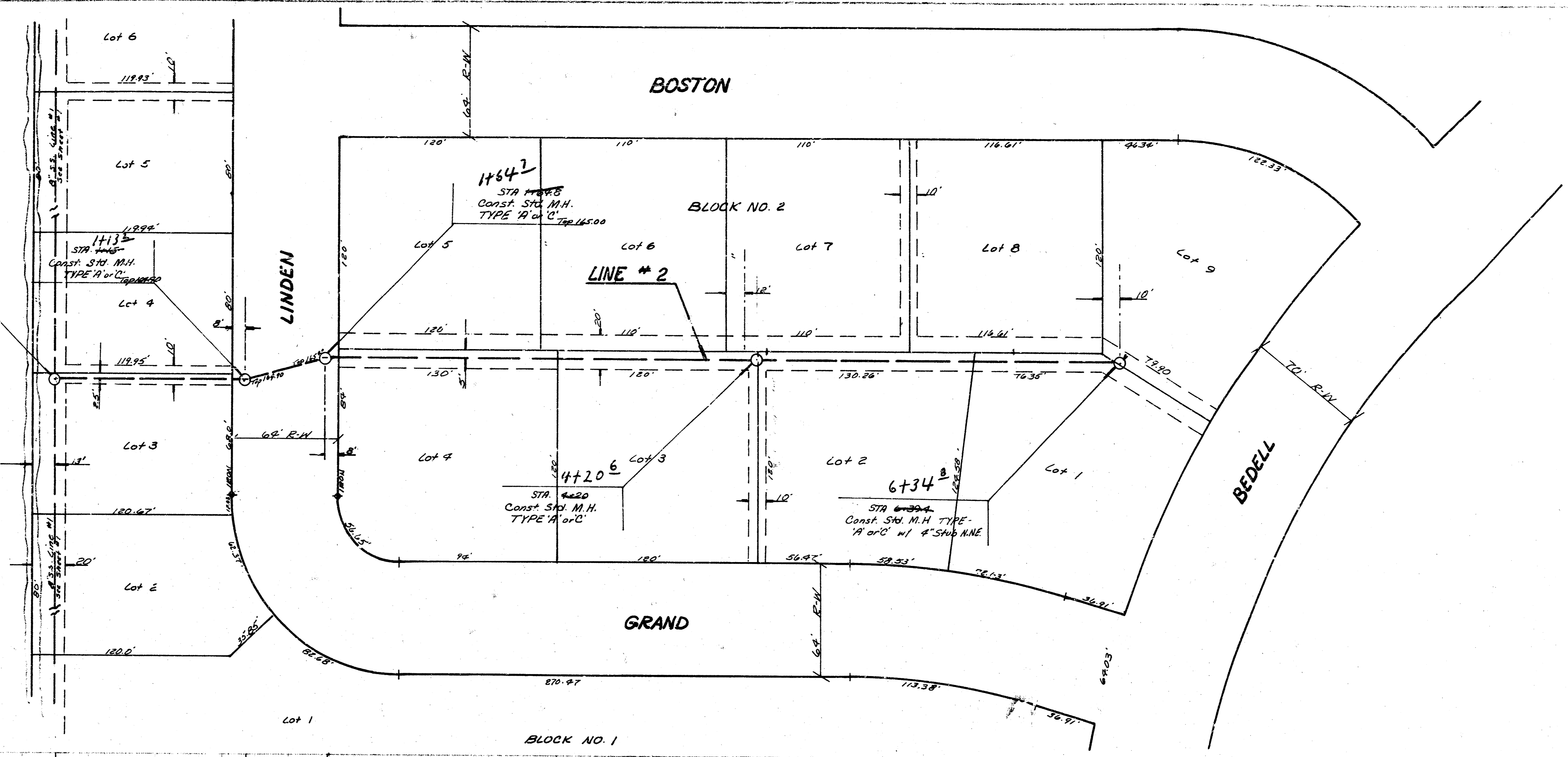
As Built 11-9-76  
 11  
 12  
**LAT NO. 1 MAIN NO. 19  
 WAR INDUSTRIES SEWER  
 Line No. 1**  
**CITY OF WICHITA, KANSAS**  
 R. W. LINN CITY ENGINEER  
 DATE:  
 PROJ. NO. DBCL 574038  
 Pg. 1 of 3



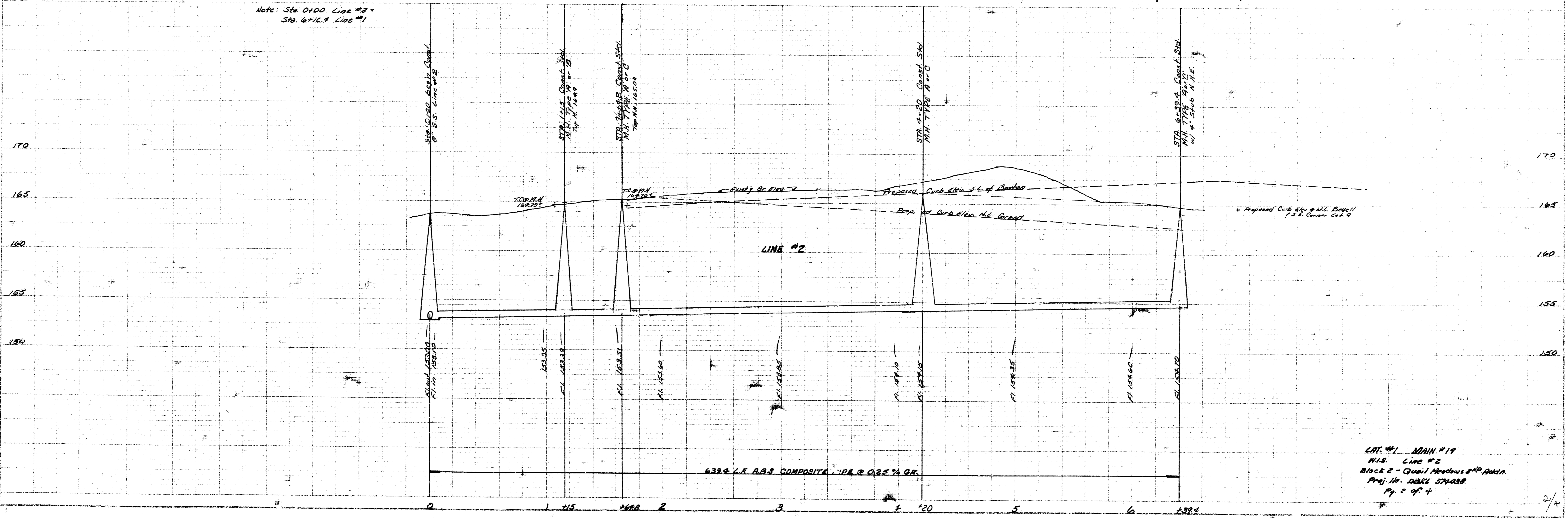


Scale: PLAN 1" = 40'  
 PROFILE Vert. 1" = 5'  
 Horiz. 1" = 40'

B.M. 16182 - City Stn. Disc. @ Harry 1/2 mi. E. of Rock Rd.  
 42' N. - 40' S. of 1/4 Sec. Corner.



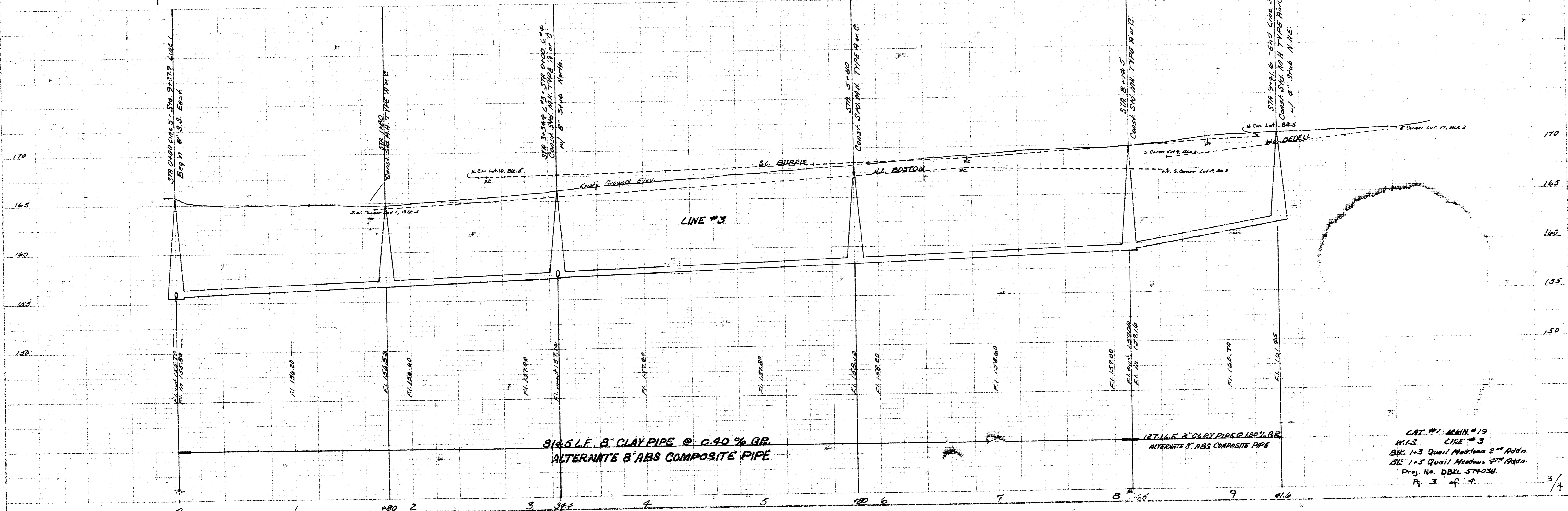
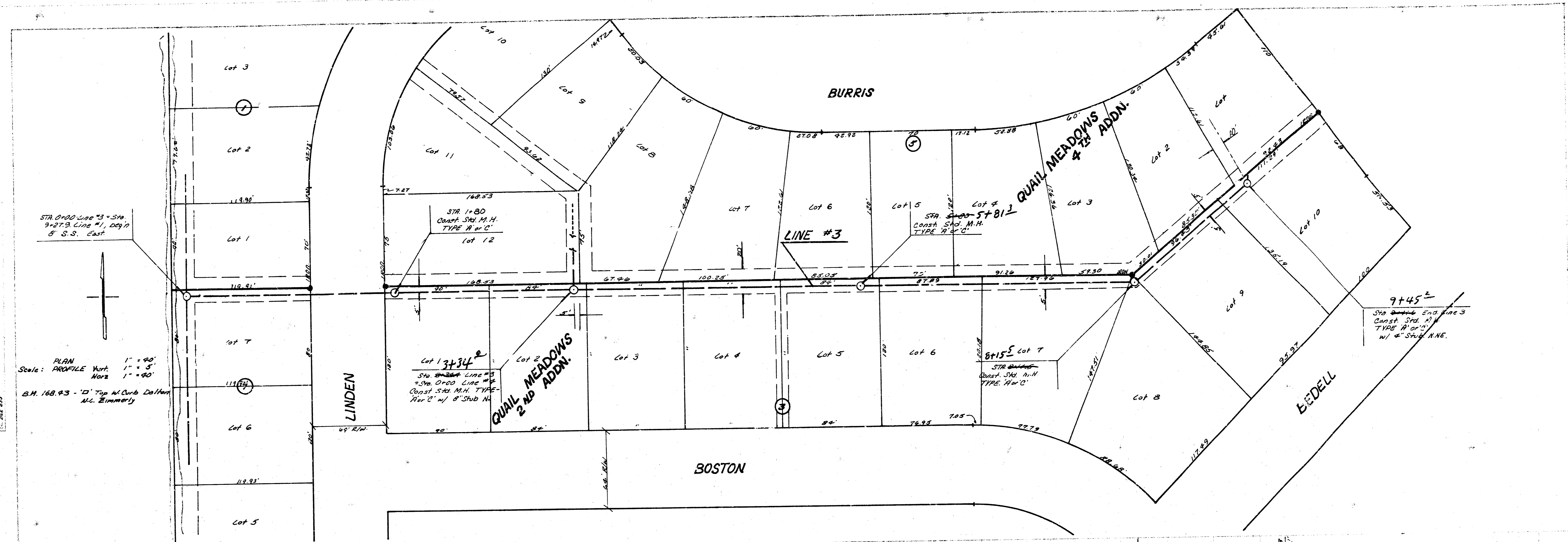
Note: Sta. 0+00 Line #2 =  
 Sta. 6+10.9 Line #1



LOT #1, MAIN #19  
 W.L.S. Line #2  
 Block 2 - Quail Meadows #20 Pkdn.  
 Proj. No. 1066 574038  
 Pg. 2 of 4

PLAN  
Scale: PROFILE Vert. 1" = 5'  
PLAN 1" = 40'

B.M. 168.93 - "D" Top of Curb Dotted  
M.C. Eimmarly



DATE: 11/19/19  
W.S. 11/19/19  
SIC: 1-3 Quail Meadows 2nd Addn.  
SIC: 1-5 Quail Meadows 3rd Addn.  
Proj. No. DBKL 574038  
P. 3 of 4

