

BENEFIT DISTRICT

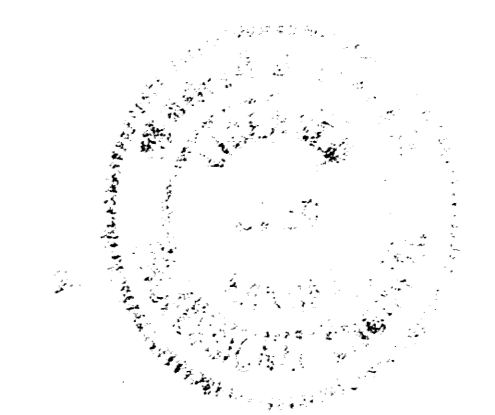
CITY OF WICHITA
 SEDGWICK COUNTY, KANSAS
 PROJECT NO. DBKL 574040

PROJECT NUMBER: 468-76-245-80152-000-000-001

**WAR INDUSTRY SEWER
 LATERAL NO. 3, MAIN 19**

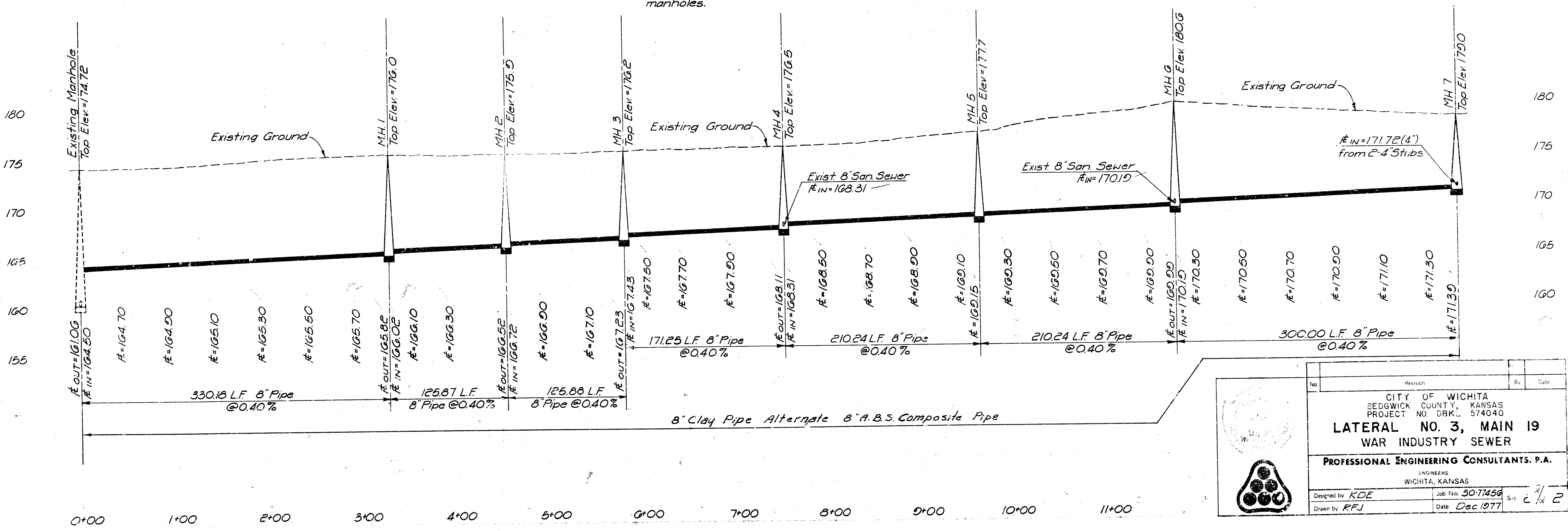
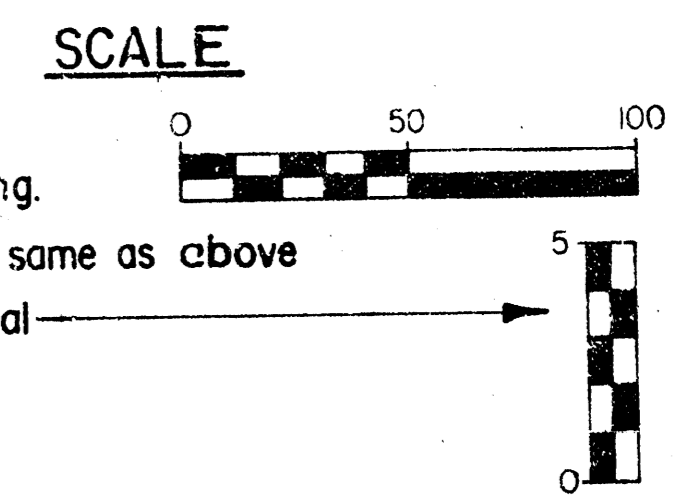
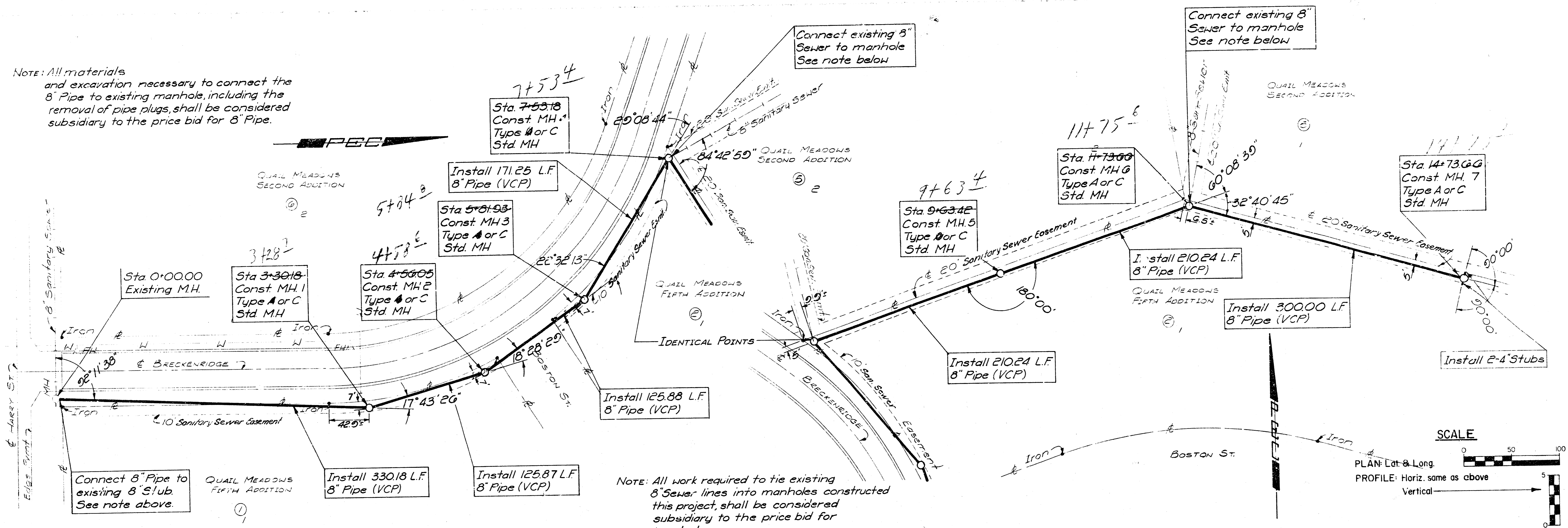
SCALE
 1"=100'

230.11'



As built 11-6-78
PROFESSIONAL ENGINEERING CONSULTANTS, P.A.
 ENGINEERS
 WICHITA, KANSAS

NOTE: All materials and excavation necessary to connect the 8" Pipe to existing manhole, including the removal of pipe plugs, shall be considered subsidiary to the price bid for 8" Pipe.



No.	Revision	By	Date
CITY OF WICHITA SEDGWICK COUNTY, KANSAS PROJECT NO. DBKL 574040 LATERAL NO. 3, MAIN 19 WAR INDUSTRY SEWER PROFESSIONAL ENGINEERING CONSULTANTS, P.A. ENGINEERS WICHITA, KANSAS			
Designed by	KDE	Job No.	30-77456
Drawn by	RFJ	Date	Dec. 1977