

SANITARY SEWER IMPROVEMENTS FOR

# LATERAL 13 MAIN 19

## WAR INDUSTRIES SEWER

### HEDGEWOOD ADDITION

LOTS 1 THROUGH 8 INCLUSIVE AND,  
LOTS 13 THROUGH 20 INCLUSIVE.

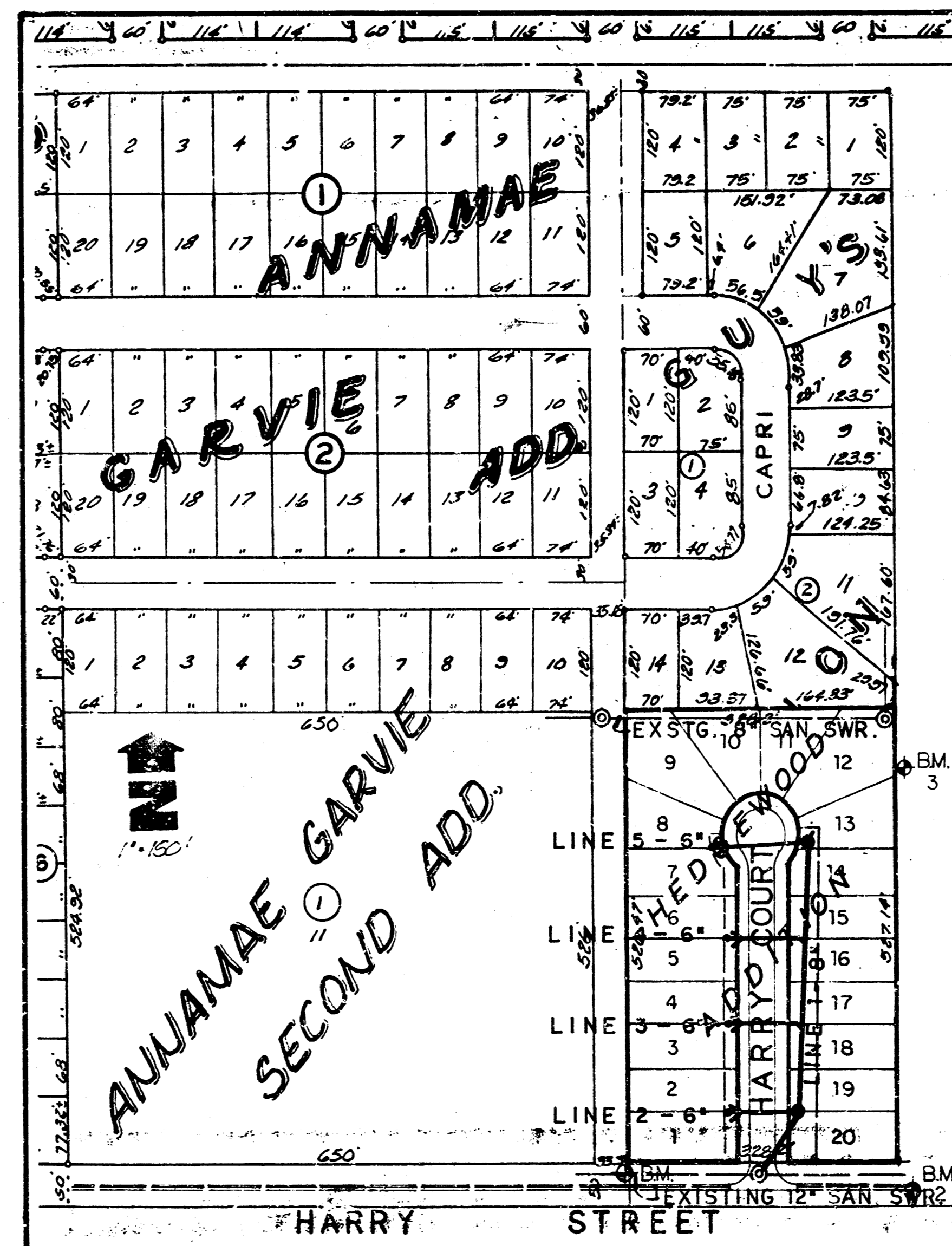
PROJECT NUMBER  
**468 76 245 81869 000 000 001**

**GENERAL NOTES**

1. Underground utility service lines and overhead utility pole lines are to be adjusted as necessary by others prior to construction unless the plans specifically call for their adjustment by the Contractor or unless the plans specifically identify a utility to be adjusted by its owner during construction. Existing utilities and their location, as shown on the plans, represent the best information obtainable for design. The Contractor will be required to work around existing utilities within the right-of-way which do not conflict with proposed construction.
2. Trees and shrubs in public right-of-way which are in direct conflict with proposed new construction shall be removed by the Contractor with the Engineer's approval. Trees and shrubs which are not in direct conflict with proposed new construction shall be saved and protected from damage.
3. The Contractor shall be responsible for preserving property irons. The Contractor will be required to re-establish any property irons which are damaged or destroyed by his construction operations. Such irons shall be re-established by a licensed land surveyor in accordance with state laws.

**CITY OF WICHITA, KANSAS**

MICHAEL E. LINDEBAK  
CITY ENGINEER



**INDEX of SHEETS**

- Title Sheet 1  
Plan-Profile (Lines 1-5) 2

**BENCHMARKS**

1. Spike in So. Face of Power Pole @ SW Cor. Lot 15, Blk. 2, Garv's Addition (Lot 1, Hedgewood Addition). Elev. = 157.23 City datum
2. 1" dia Cut in Top of Curb 104' E (1) and 24' S' N @ Intersection Harry Court @ Harry Street. Elev. = 157.15 City datum
3. R.P. Spike 79' 0" So and 7' 5" E of 1/2" Iron in N.E. Prop Corner, Lot 12, Hedgewood Addition. Elev. = 156.51 City datum

IMPROVEMENT DISTRICT



*BUILT AS PER PLAN  
12-88  
RPL*



TITLE SHEET

<b>BAUGHMAN COMPANY, P.A.</b>				SHEET
SURVEYING & ENGINEERING				1
315 262-7271 • 315 ELLIS • WICHITA, KANSAS 67211				OF
DATE:	DRAWN:	INCHES:	SCALE:	2
8/1/88	gary	1/4"	AS SHOWN	1/2
Project Number:				

