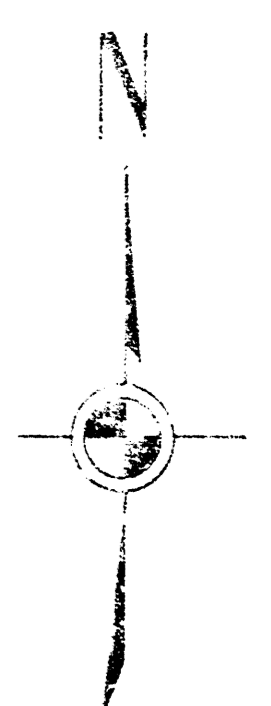
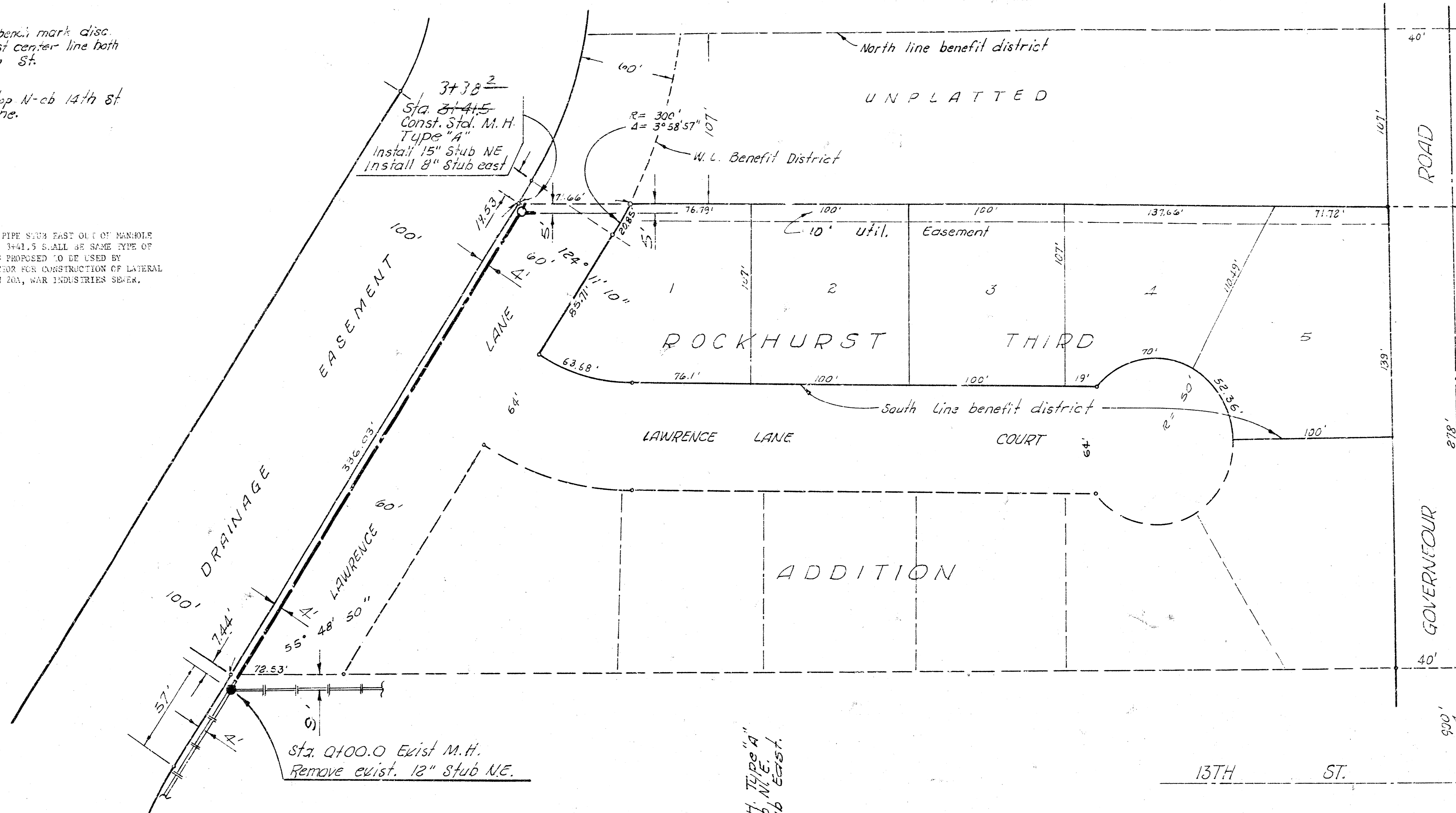


3. M. 191.62 City of Wichita bench mark disc.
41.5' north and 33' East center line both
Governour Rd. & 13th St.

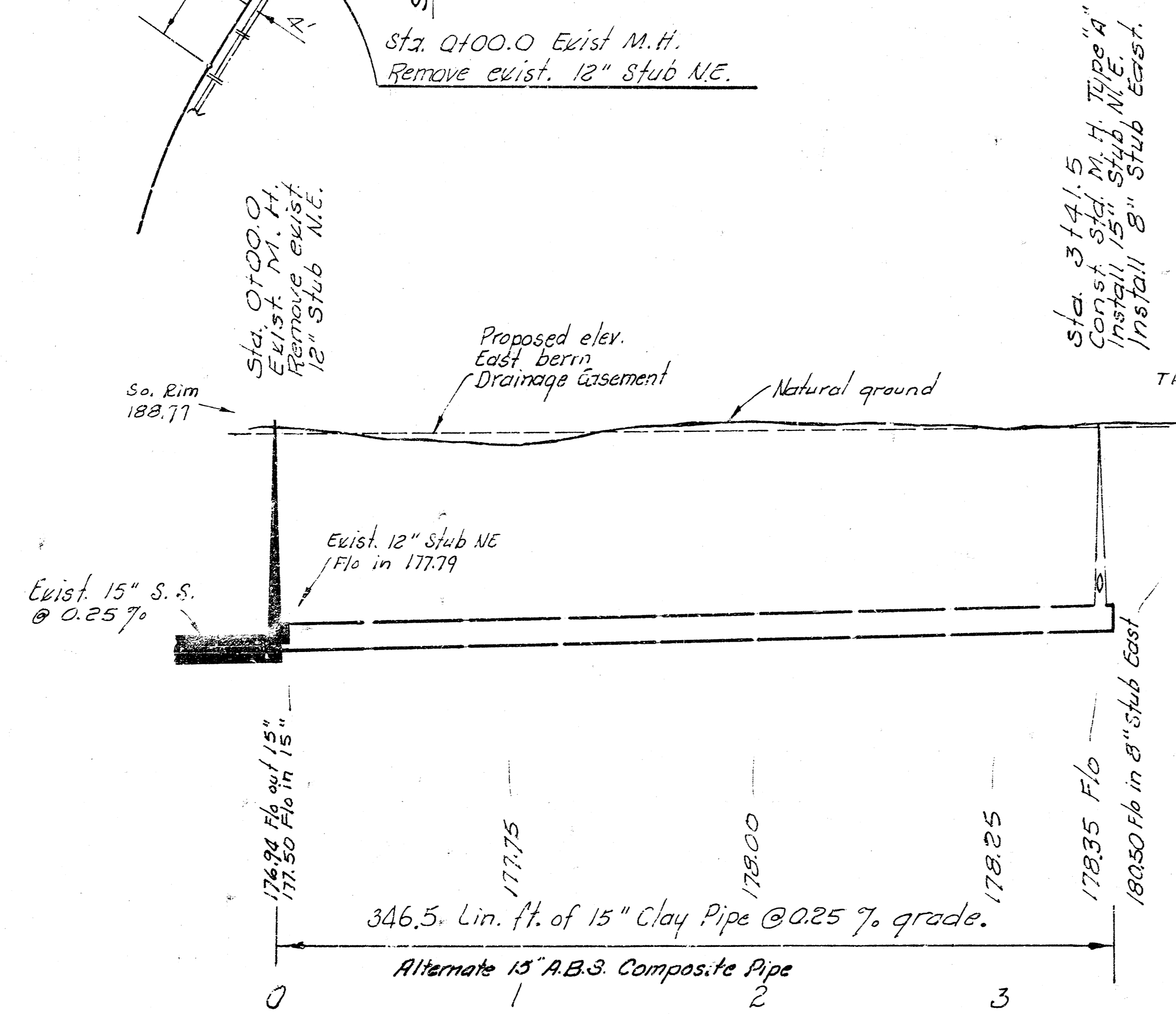
3. M. 189.84 "R" in Ritchie top N-cb 14th St
& W. L. Stratford Lane.

NOTE: PIPE SHALL PASS OUT OF MANHOLE
AT STA. 3+41.5 SHALL BE SAME TYPE OF
PIPE AS PROPOSED TO BE USED BY
CONTRACTOR FOR CONSTRUCTION OF LATERAL
1, MAIN 20A, WAR INDUSTRIES SEWER.



Plan Scale 1" = 40'
Profile Scale 1" = 5' 12.5"

This point being
900' N. of S.E. Cor.
S.W. 1/4 7-27-2 E.



As built 2-24-77

MAIN 20A, WAR INDUSTRIES SEWER
CITY OF WICHITA, KANSAS

R. W. LINN — CITY ENGINEER

DATE: October 1977 PROJECT NO. DB-M 57 6048