

# LATERAL 12, MAIN 20, W.I.S.

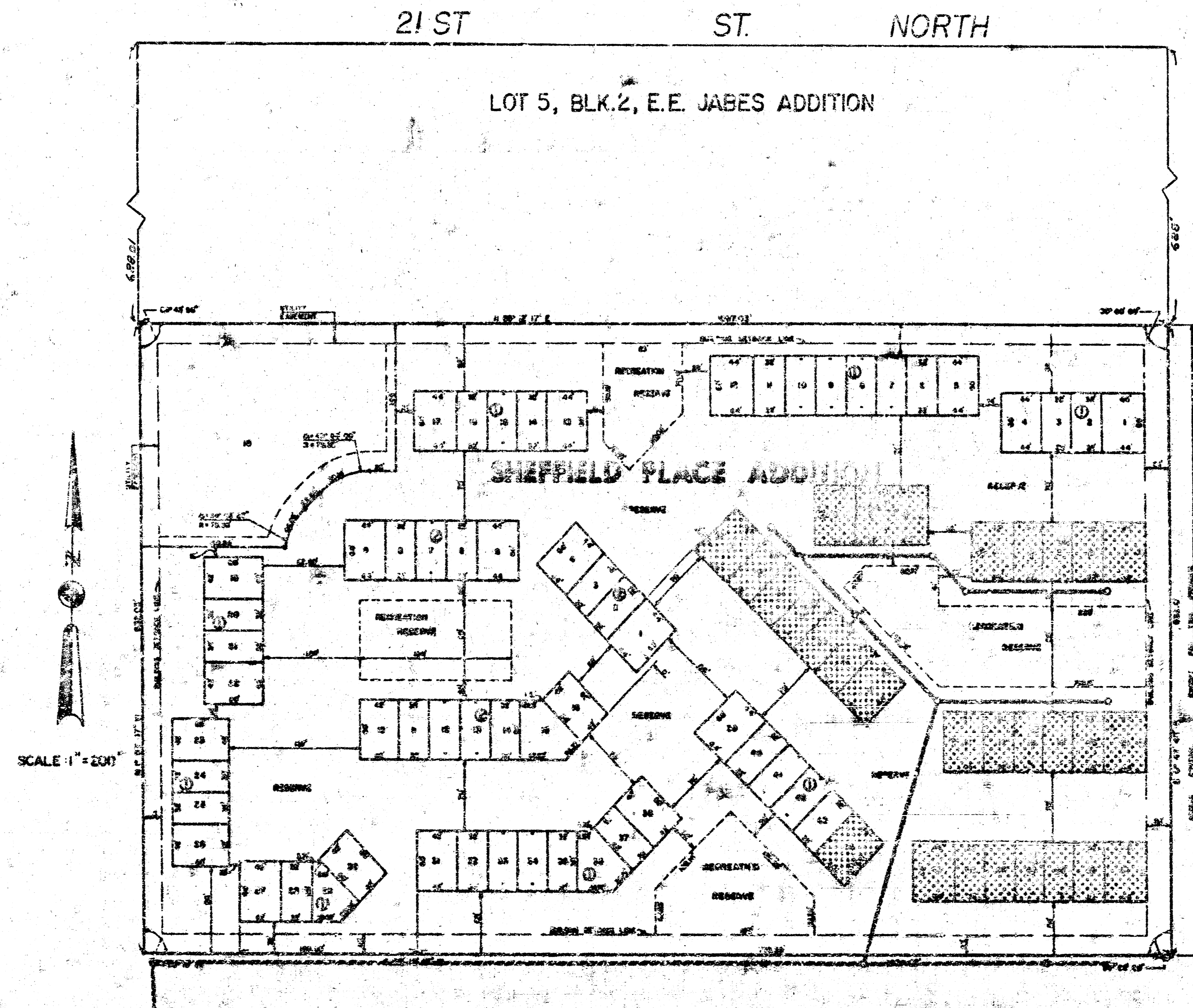
PROJECT NO.

463-76-245-8055-1-000-000-001

CITY OF WICHITA, KANSAS

N.W. LIND CITY ENGINEER

JULY, 1978



*Handwritten signature: Kenneth H. Brantley*

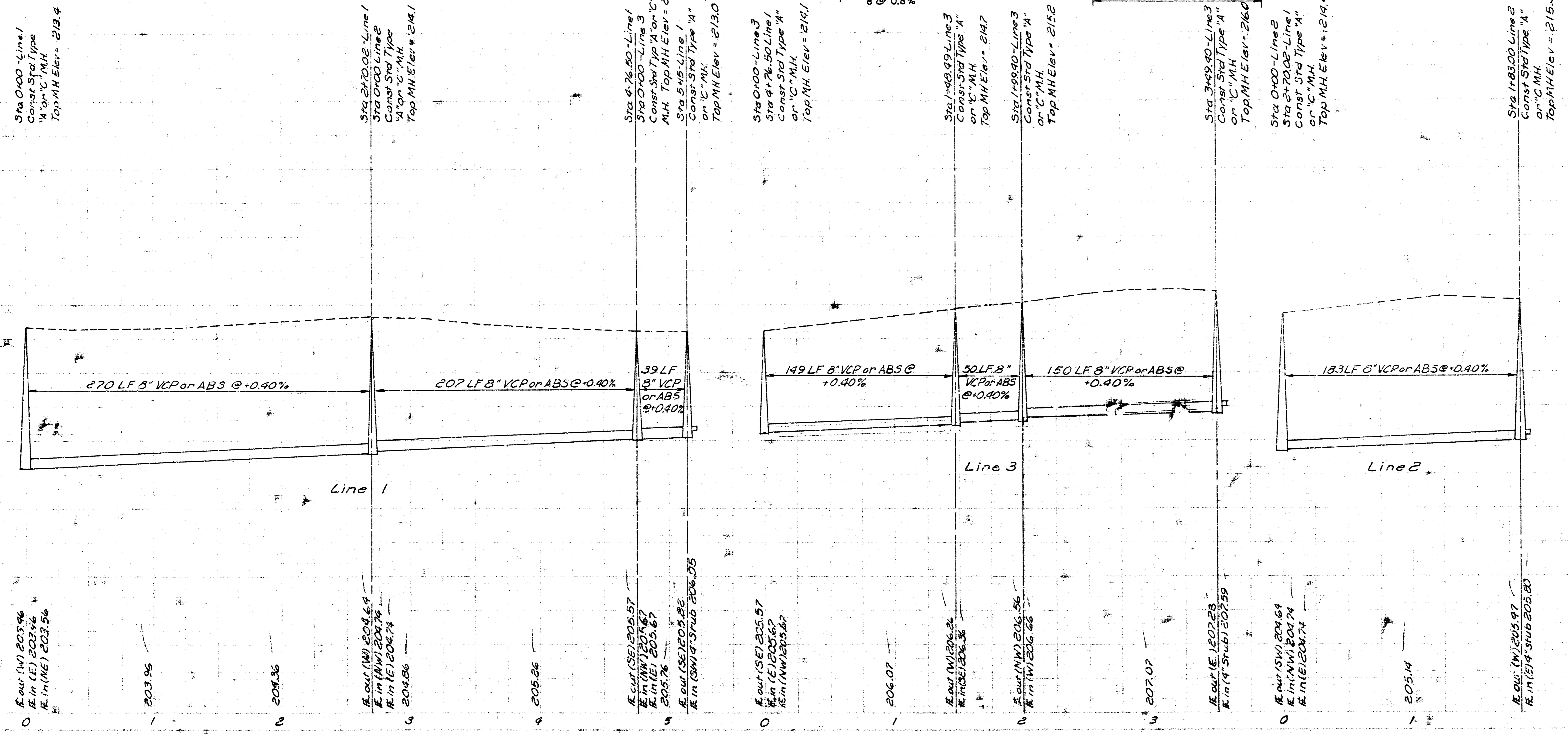
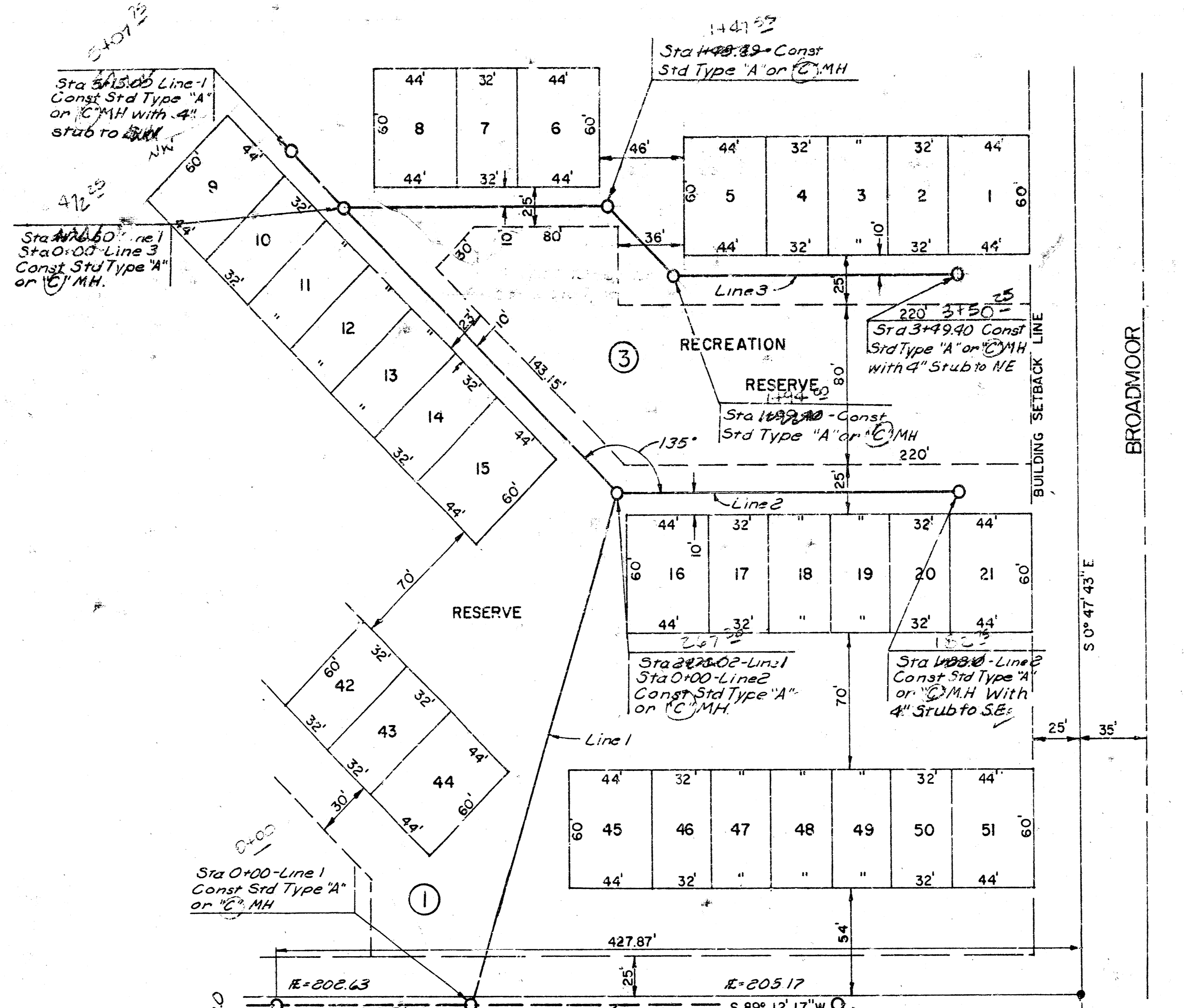
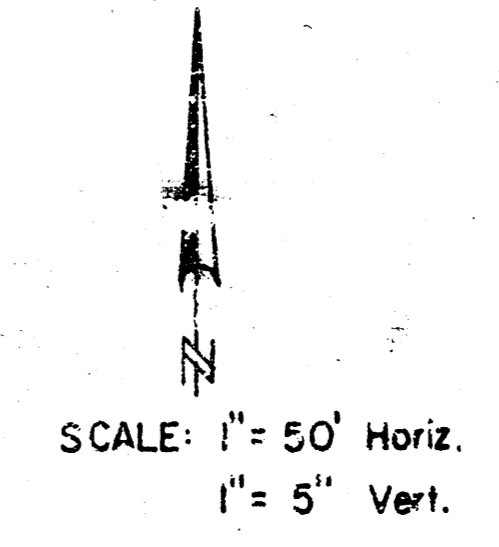
*As Built  
JSL 2/6/79  
I-94  
D-41*

BENEFIT DISTRICT DESCRIPTION - LOTS 44 THROUGH 51, BLOCK 1, AND ALL LOTS IN BLOCK 2, SHEFFIELD PLACE ADDITION

VAN DOREN - HAZARD - STALLINGS  
ARCHITECTS - ENGINEERS - PLANNERS  
WICHITA, KANSAS

SHEET 1

B.M. 217.23 - RR Spike S.S.T.P. No. Side 21st St No. and ...  
 E.L. Broadmoor



to Full  
 H.H.  
 D.A.