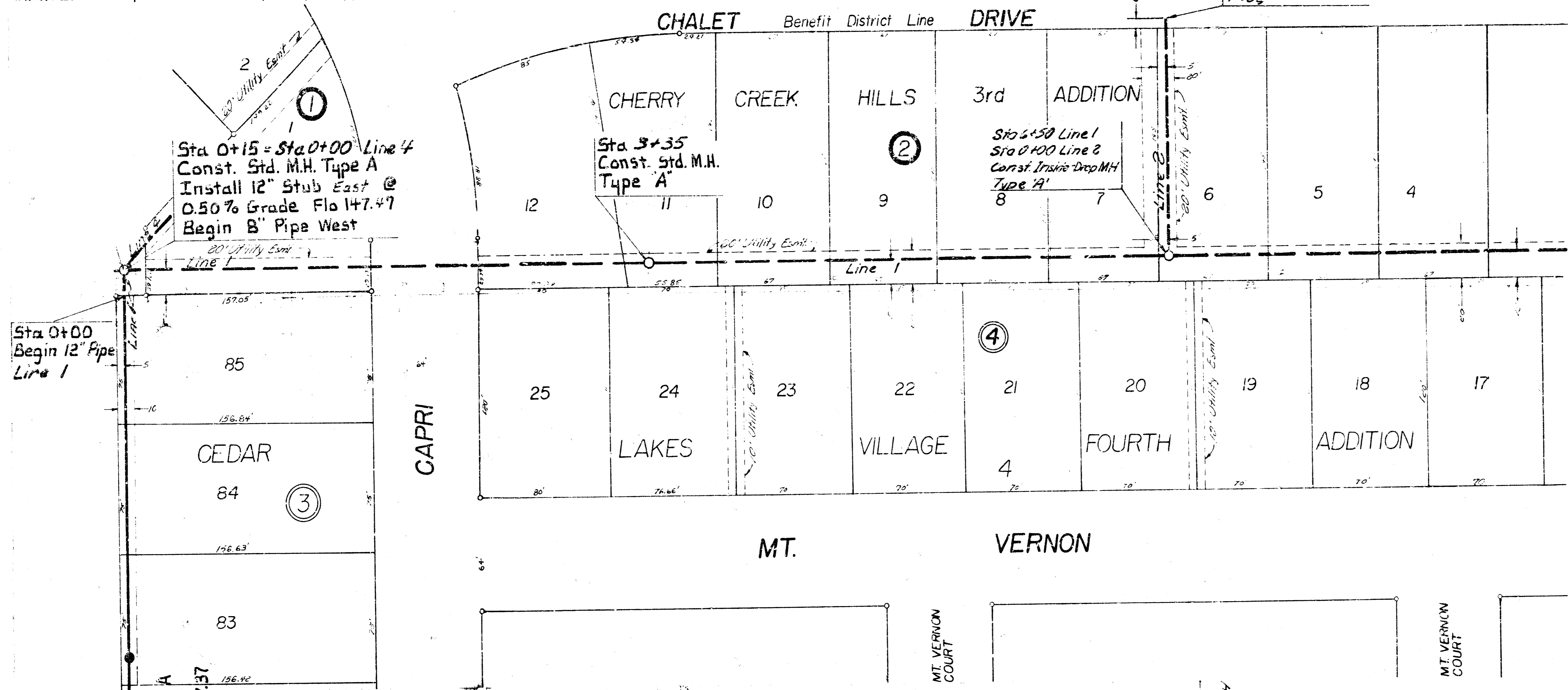
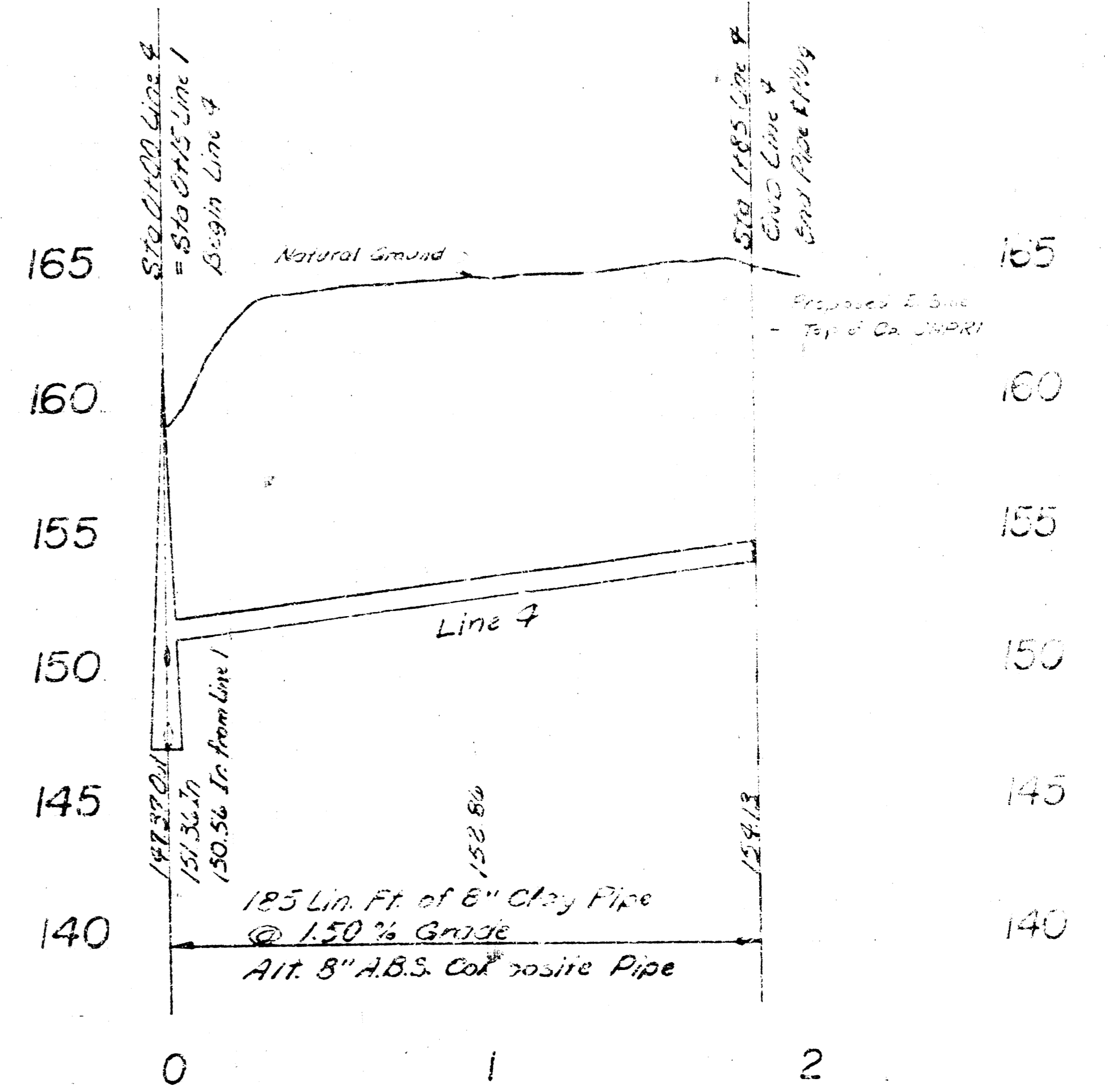
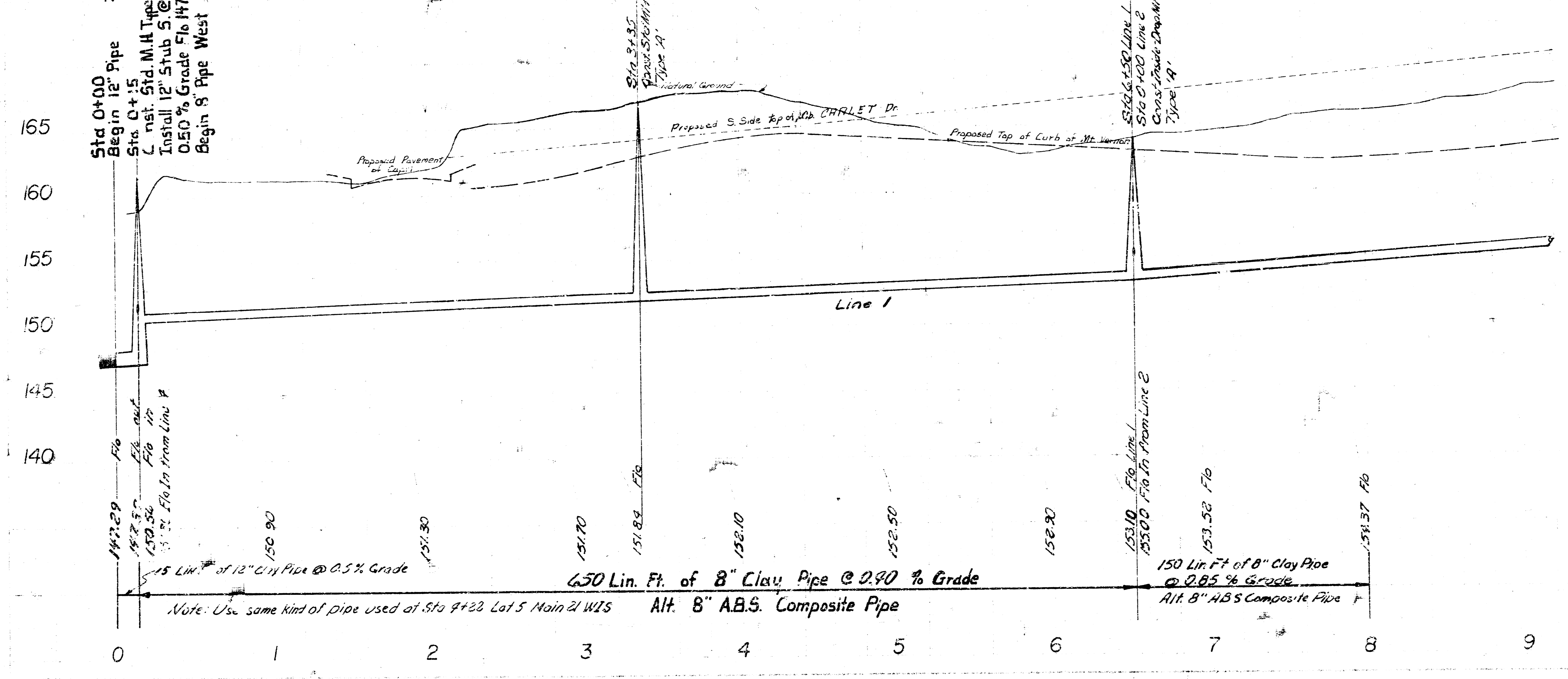
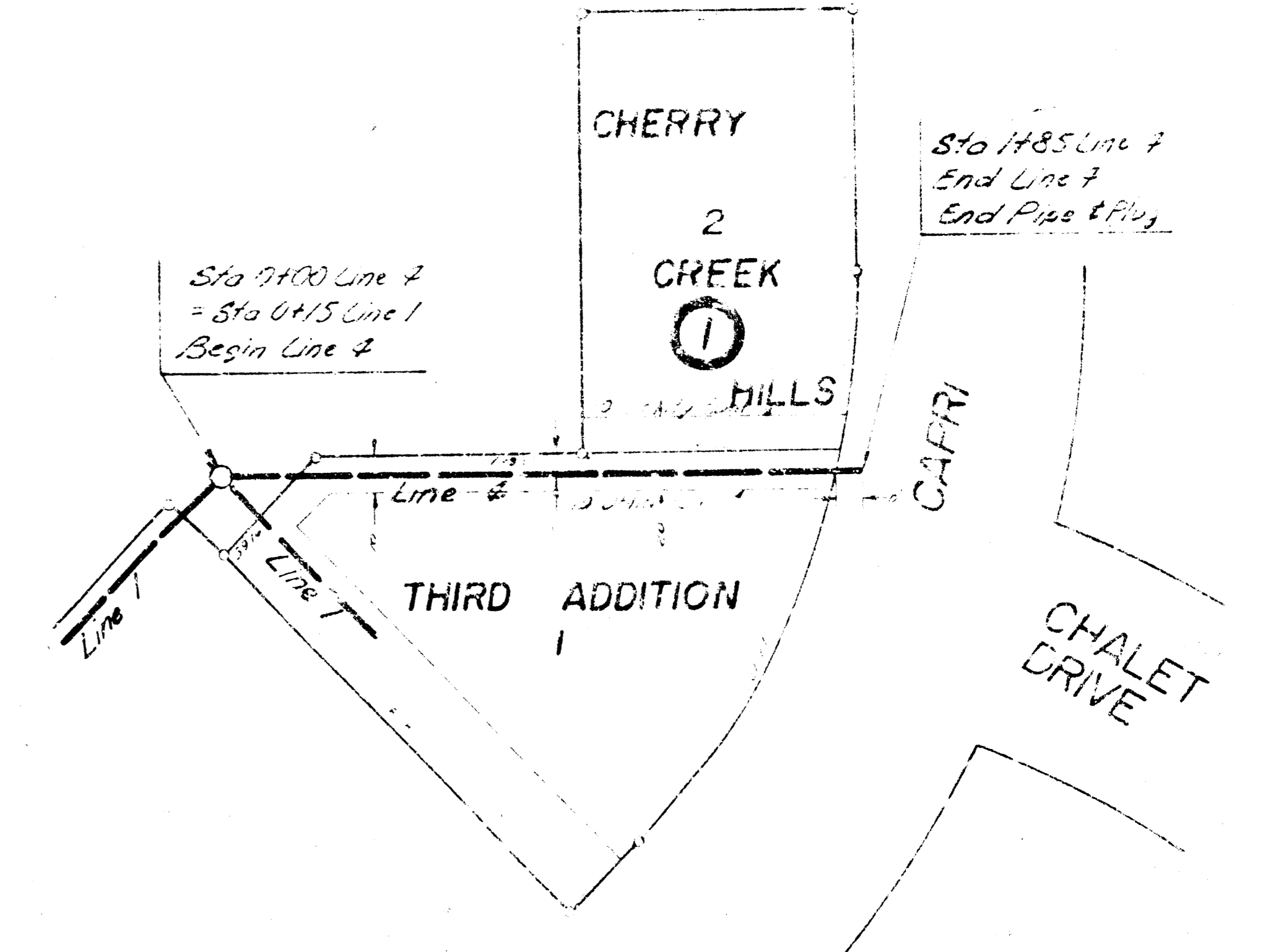


B.M.162.58 R.R. Spike in West side of power pole approximately 176.5 ft. West and 4.0 ft. South of the Southeast corner of Cedar Lakes Village 4th Addition.
 B.M.16C.39 "60" Penny Nail in East side gate post approximately 6ft. South of the Southeast corner of Cedar Lakes Village 4th Addition.
 B.M.172.47 R.R. Spike in West side of power pole approximately 200 ft. Northeast of corner of Lori Lane and Chalet Drive.

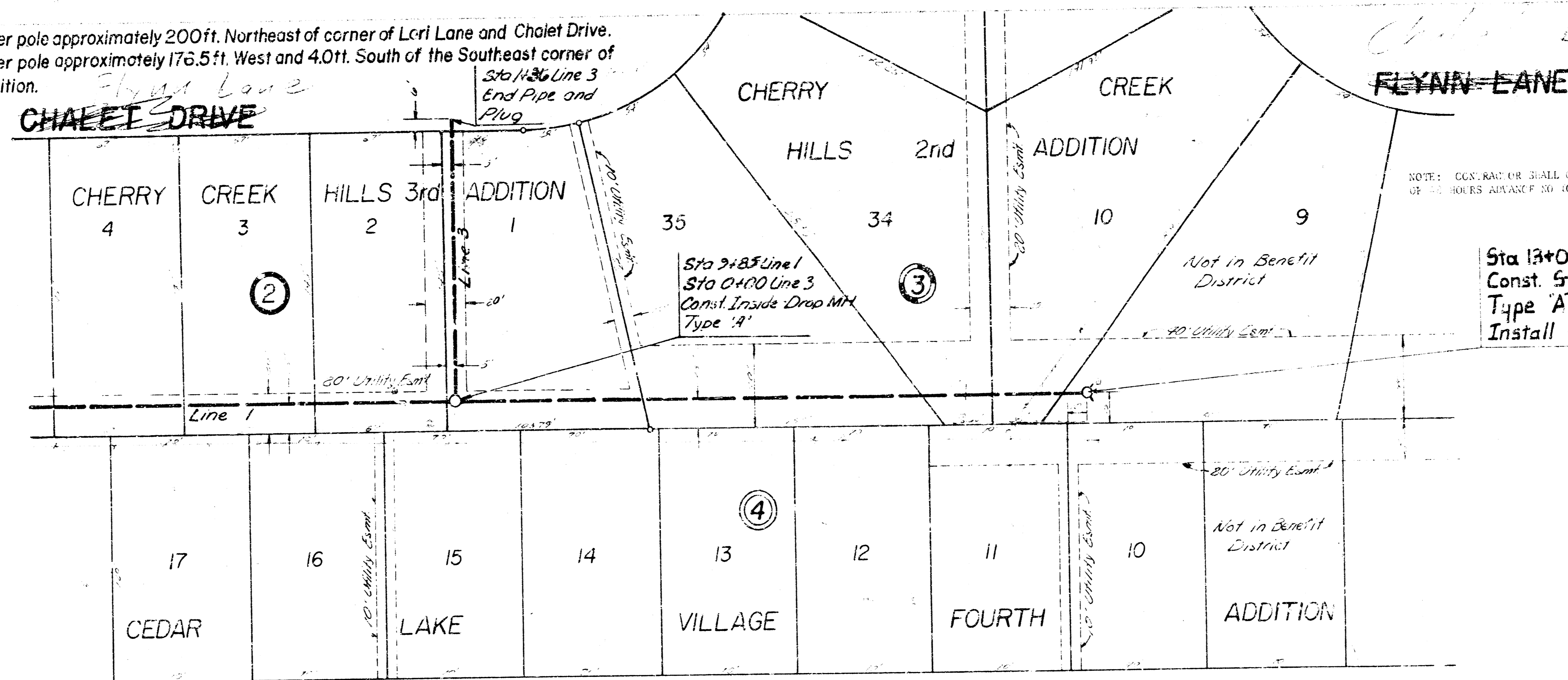


Plan Scale 1" = 40'
 Profile Scale 1" = 40' Horiz.
 1" = 5' Vert.



LAT. 6 MAIN 21 W.I.S.
 CITY OF WICHITA, KANSAS
 R.W. LINN CITY ENGINEER
 DATE: PROJECT NUMBER: DBKL574111
 PROJECT NUMBER: 468-76-245-80181-000-000-001

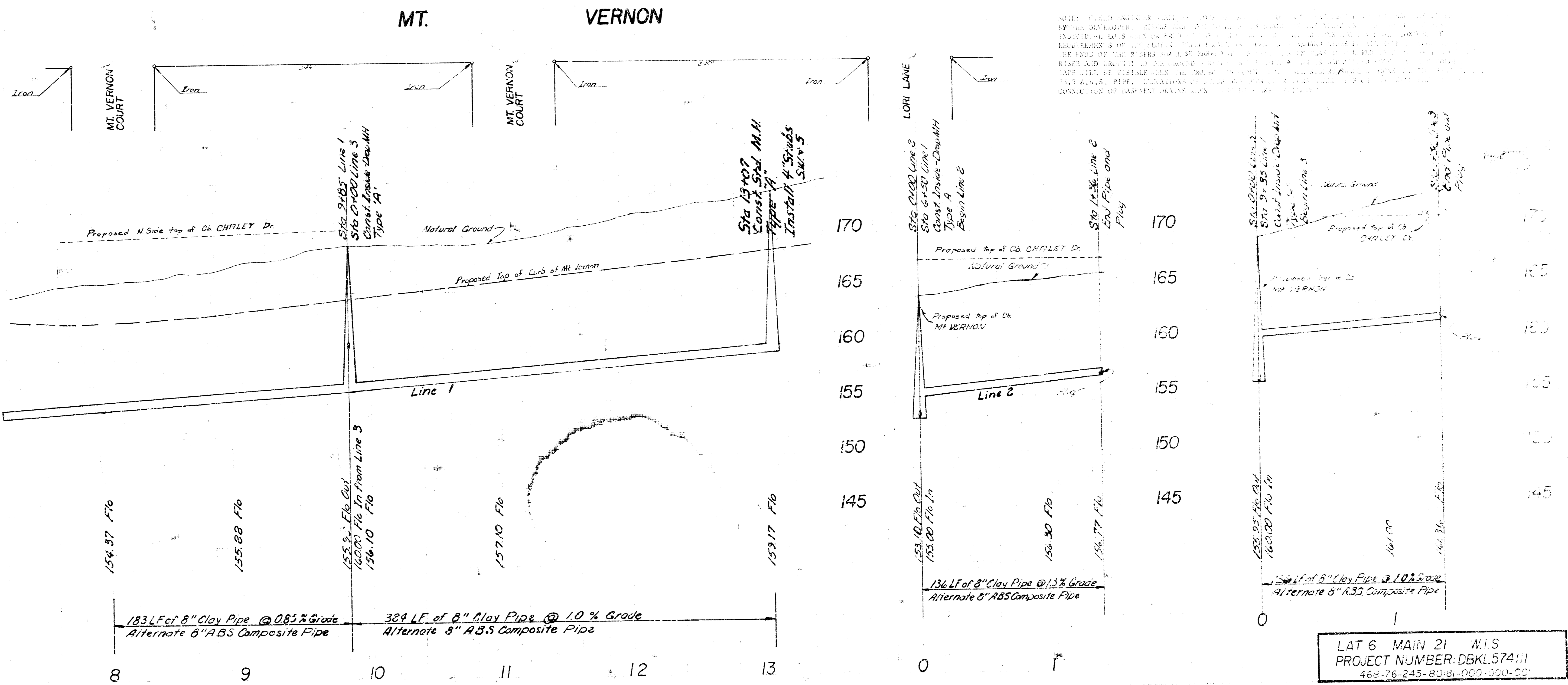
B.M. 172.47 R.R. Spike in West side of power pole approximately 200ft. Northeast of corner of Lori Lane and Chalet Drive.
 B.M. 162.58 R.R. Spike in West side of power pole approximately 176.5ft. West and 4.0ft. South of the Southeast corner of Cedar Lakes Village 4th Addition.



NOTE: OWNER SHALL GIVE OWNER 48 HOURS NOTICE IN WRITING TO BE PRESENT AT THE PROJECT SITE AT LEAST 48 HOURS BEFORE THE PROJECT BEGINS.

Sta 13+07
 Const. Sid M.H.
 Type 'A'
 Install 4" Strubs SW+N.W.

Plan Scale 1" = 40'
 Profile Scale 1" = 40' Vert
 1" = 5' Vert



LAT 6 MAIN 21 WLS
 PROJECT NUMBER: DBKL57411
 468-76-245-80-81-000-320-00