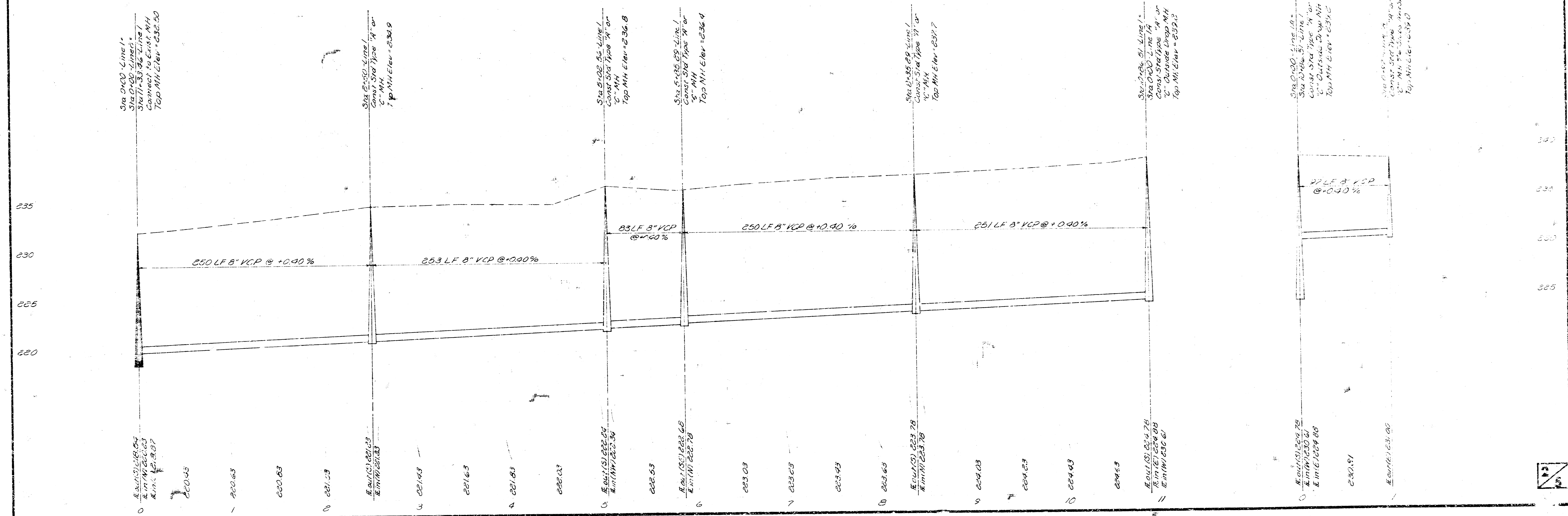
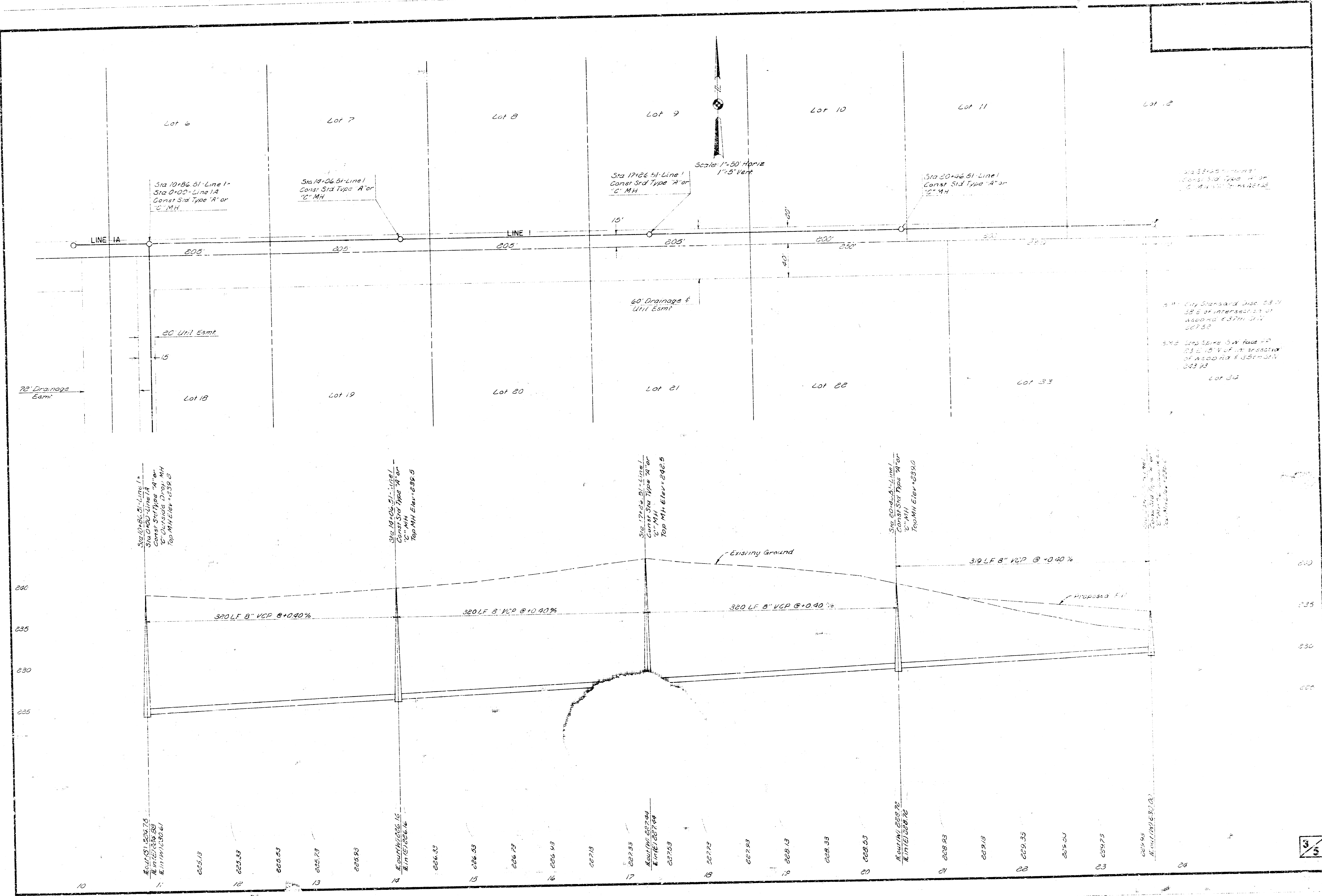


Note: All stubs in Manholes shall be clay pipe.  
All risers shall be 6" clay pipe.





Sta 10+86.51-Line 1  
Sta 0+00-Line 1A  
Const Sid Type "A" or  
"C" MH

80' Drainage Estm.

78' Drainage Estm.

Sta 11+06.51-Line 1  
Const Sid Type "A" or  
"C" MH

60' Drainage &  
Util Estm.

Sta 17+26.51-Line 1  
Const Sid Type "A" or  
"C" MH

Sta 20+46.51-Line 1  
Const Sid Type "A" or  
"C" MH

City Standard Disc. 28.17  
38' S of intersection of  
assumed E 37th St  
227.52

3rd S.W. face of  
E 37th St  
of A 500 ft x 50 ft  
303.23

