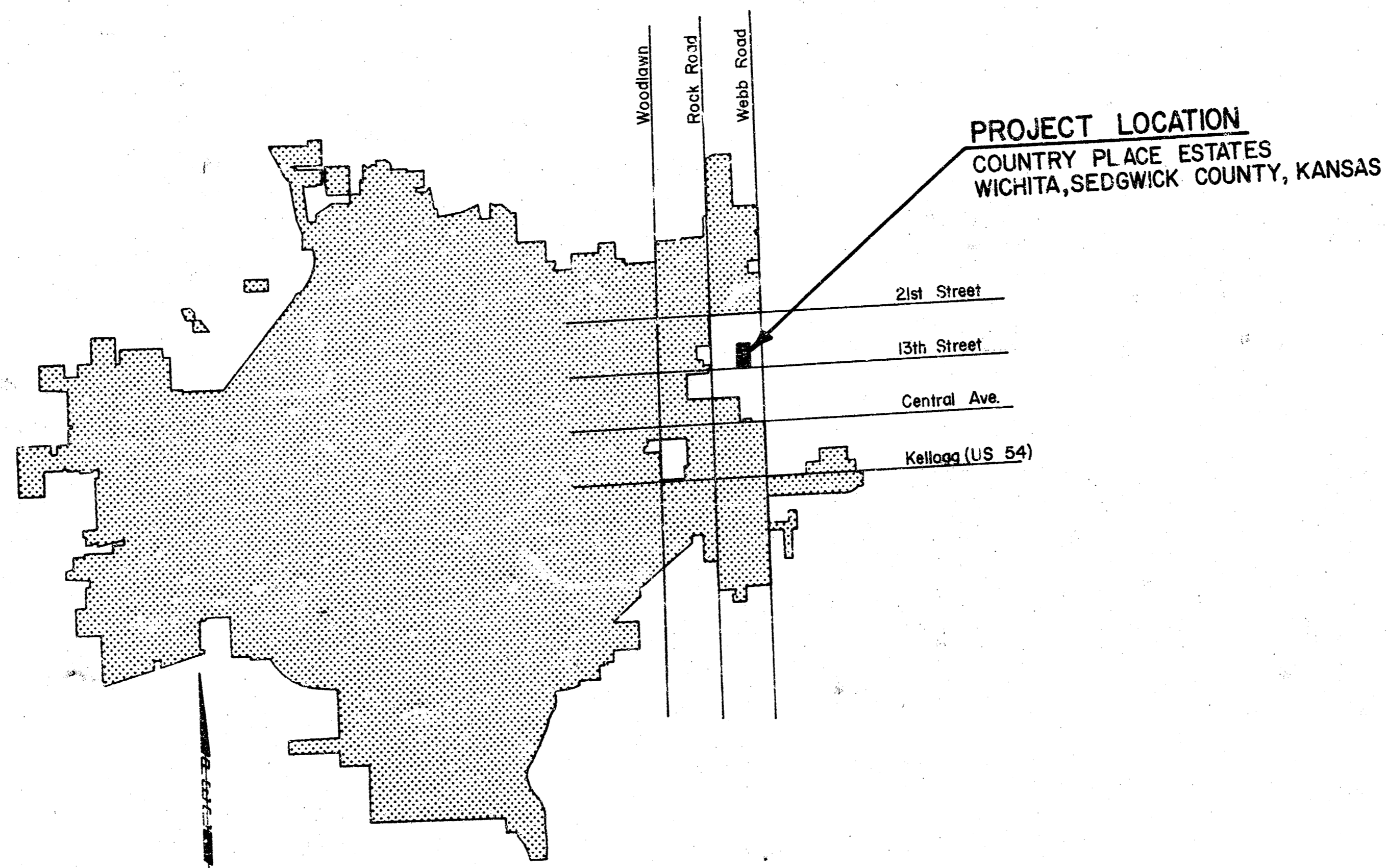


CONSTRUCTION PLANS FOR LATERAL 7, MAIN 22 OF THE WAR INDUSTRY SEWER

THE CITY OF WICHITA,
SEDGWICK COUNTY, KANSAS

INDEX OF SHEETS

SHEET NO. 1	TITLE SHEET
SHEET NO. 2	KEY MAP
SHEET NO. 3	BENEFIT DISTRICT MAP
SHEET NO. 4-5	PLAN-PROFILES



LOCATION MAP

CITY OF WICHITA PROJECT NO. 468-76-245-80799-000-000-001

OCTOBER 1980

PLANS PREPARED BY

PROFESSIONAL ENGINEERING CONSULTANTS, P.A.
ENGINEERS
WICHITA, KANSAS

NOTE: PIPE USED ON THIS PROJECT SHALL BE EITHER V.C.P., P.V.C. OR A.B.S. COMPOSITE PIPE.

GENERAL NOTES

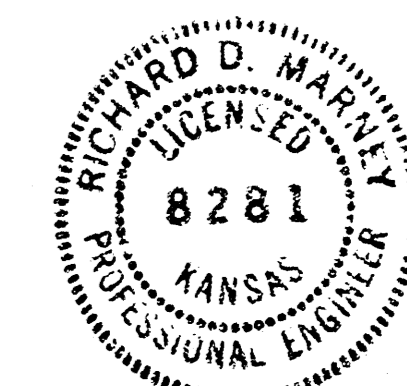
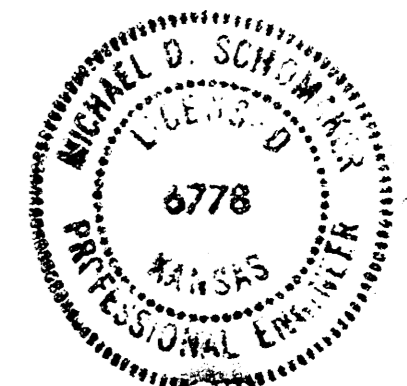
1. ALL CONSTRUCTION AND MATERIALS TO COMPLY WITH CITY OF WICHITA SPECIFICATIONS AND STANDARDS.
2. SEWER LINES SHALL BE INSPECTED BY THE DEPARTMENT OF PUBLIC WORKS ENGINEERING DIVISION.
3. PRIOR TO BEGINNING CONSTRUCTION, THE CONTRACTOR SHALL VERIFY THE HORIZONTAL AND VERTICAL LOCATION OF THE EXISTING MH'S AND 8" STUBS AT STA. 6+00 OF ALL PROPOSED LINES. IF ANY DISCREPANCIES ARE FOUND REGARDING FIELD LOCATIONS AND PLAN LOCATIONS IN THESE AREAS, THE CONTRACTOR SHALL CONTACT THE ENGINEER FOR THE NECESSARY FIELD ADJUSTMENT CALCULATIONS PRIOR TO PROCEEDING.
4. ALL ELEVATIONS SHALL BE BASED ON CITY OF WICHITA DATUM. (5605-1187.40' CITY DATUM.)
5. FIELD ENGINEER SHALL SET TOPS OF MANHOLES TO MATCH PROPOSED FINISHED GRADE AS DETERMINED BY THE DEVELOPER.

BENCH MARK

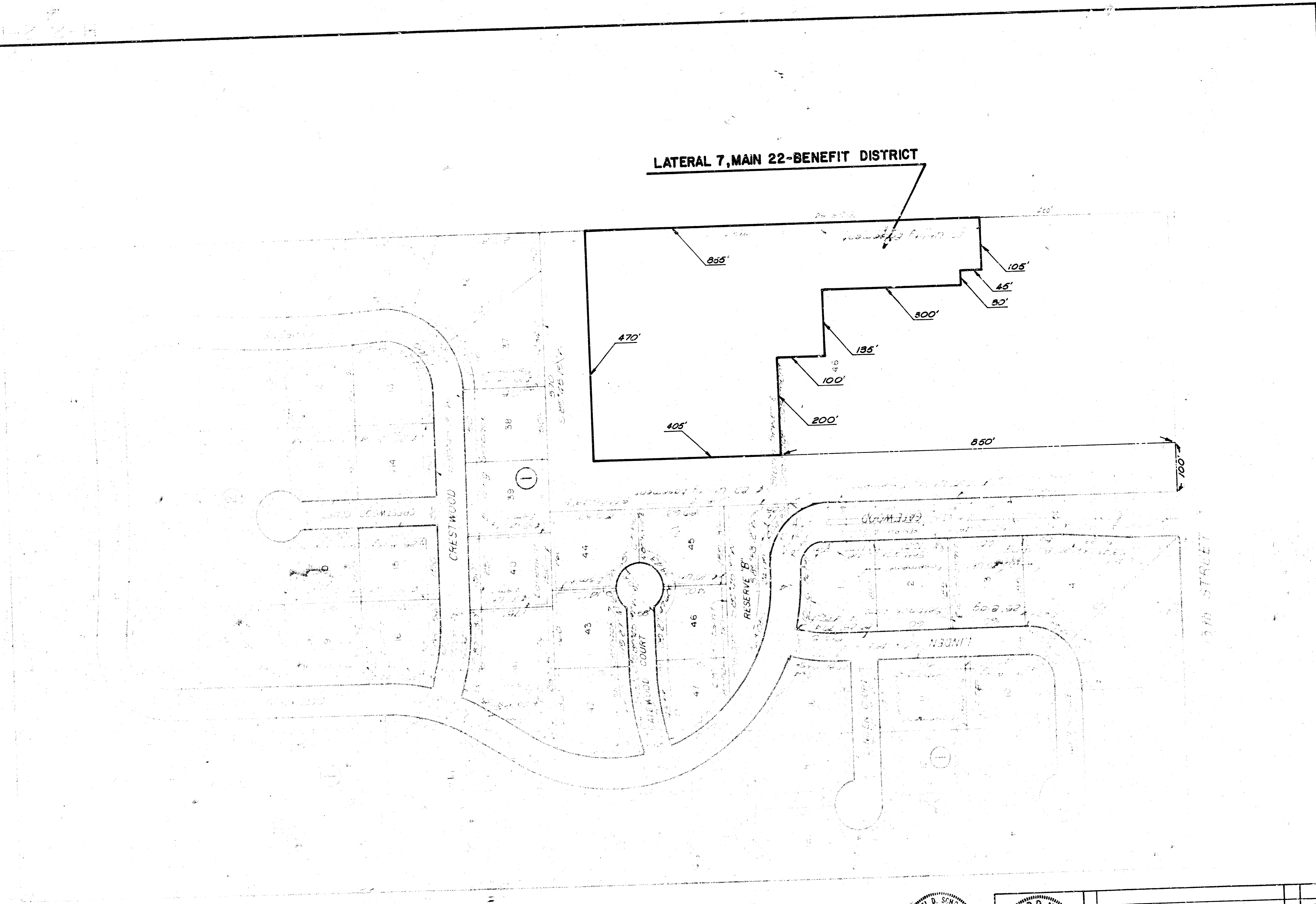
B.M. - CITY OF WICHITA GRASS CAP, 38' EAST AND 52' SOUTH OF INTERSECTION WEBB ROAD AND 13TH ST. NORTH.

ELEV. = 186.26

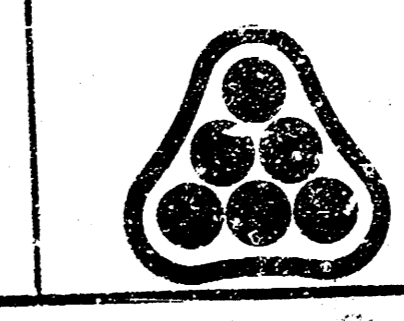
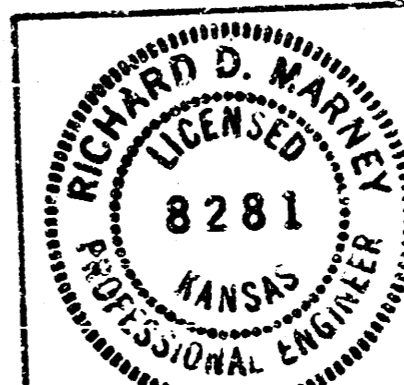
Handwritten notes and signatures:
AS Billed
10/5/80



COUNTRY PLACE ESTATES
WICHITA, SEDGWICK COUNTY, KANSAS

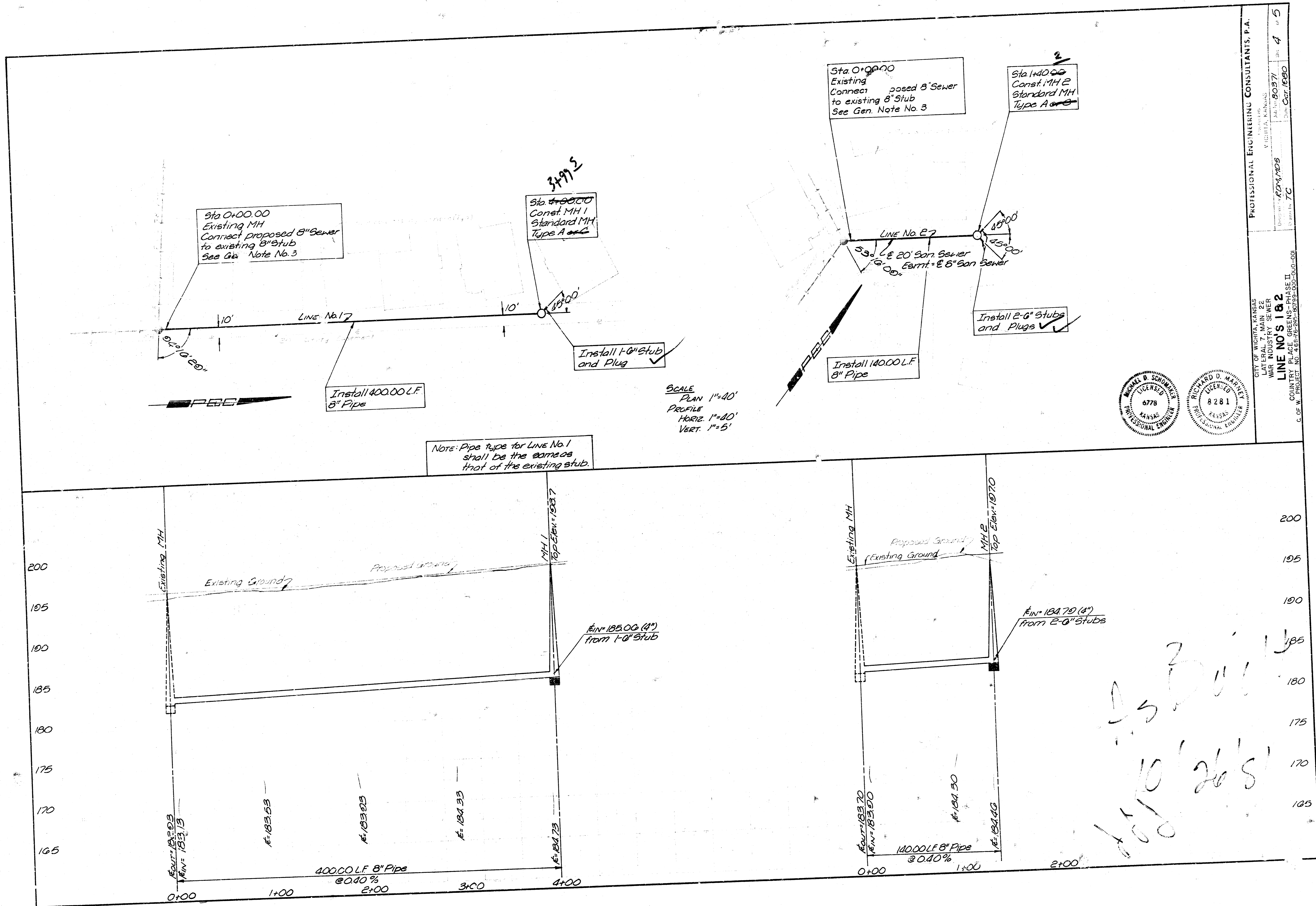


BENCH MARK
B.M. - CITY OF WICHITA BRASS CAP 36' EAST AND 53' SOUTH OF
INTERSECTION WEBB ROAD AND 15TH ST. NORTH. ELEV = 186.26

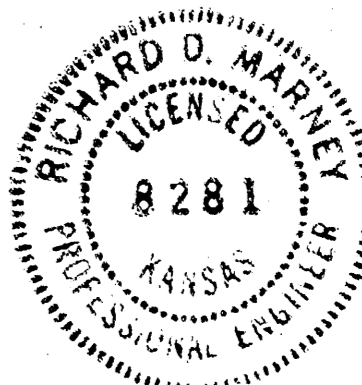


No.	Revision	By	Date
CITY OF WICHITA, KANSAS LATERAL 7, MAIN 22 WAR INDUSTRY SEWER BENEFIT DISTRICT MAP COUNTRY PLACE GREENS - PHASE II C. OF W. PROJECT NO. 468-76-245-80799-000-001 PROFESSIONAL ENGINEERING CONSULTANTS, P.A. ENGINEERS WICHITA, KANSAS			
Designed by:	Job No. 80371	Sht. 3 of 5	
Drawn by: A.F.J.	Date Oct 1980		

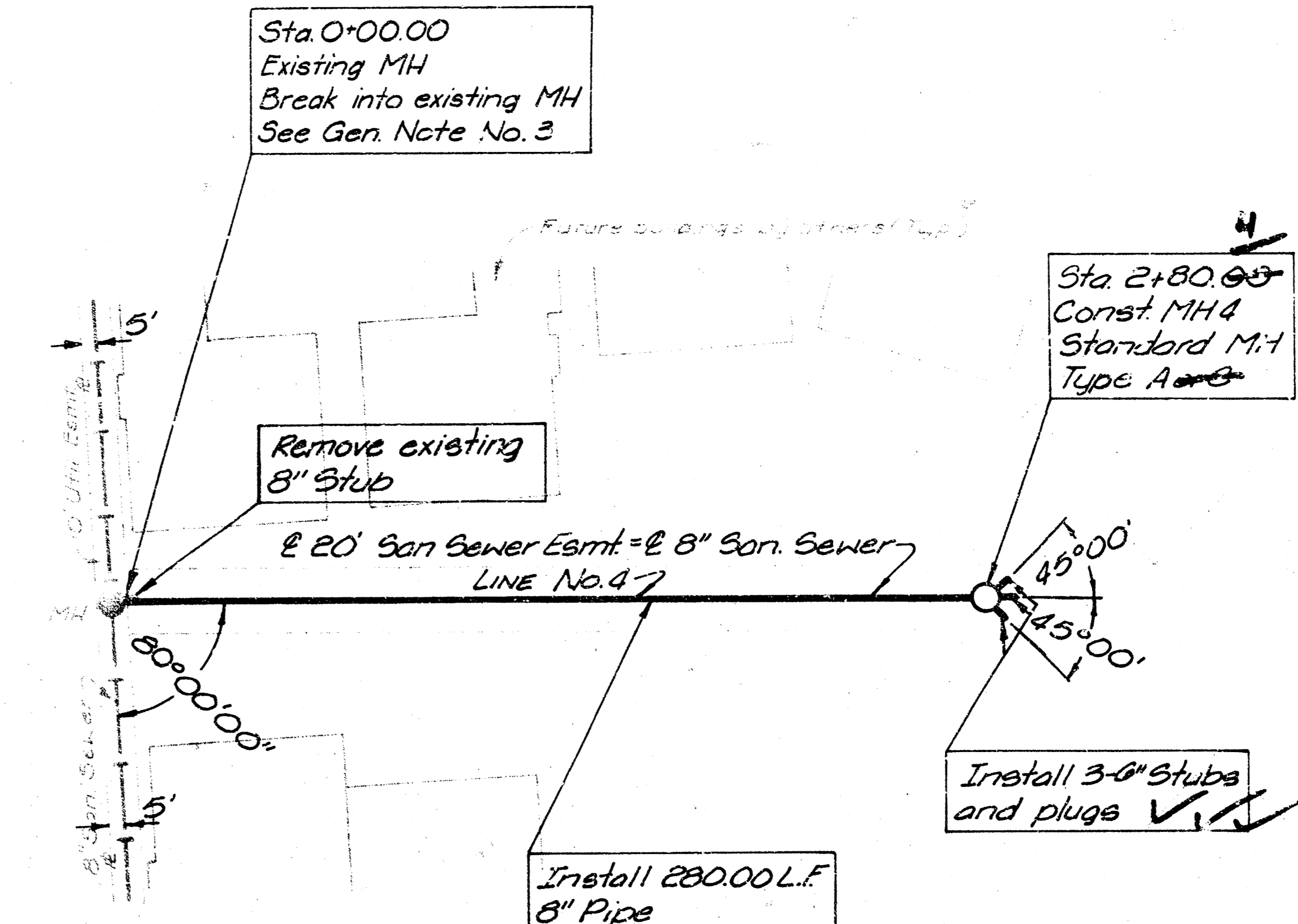
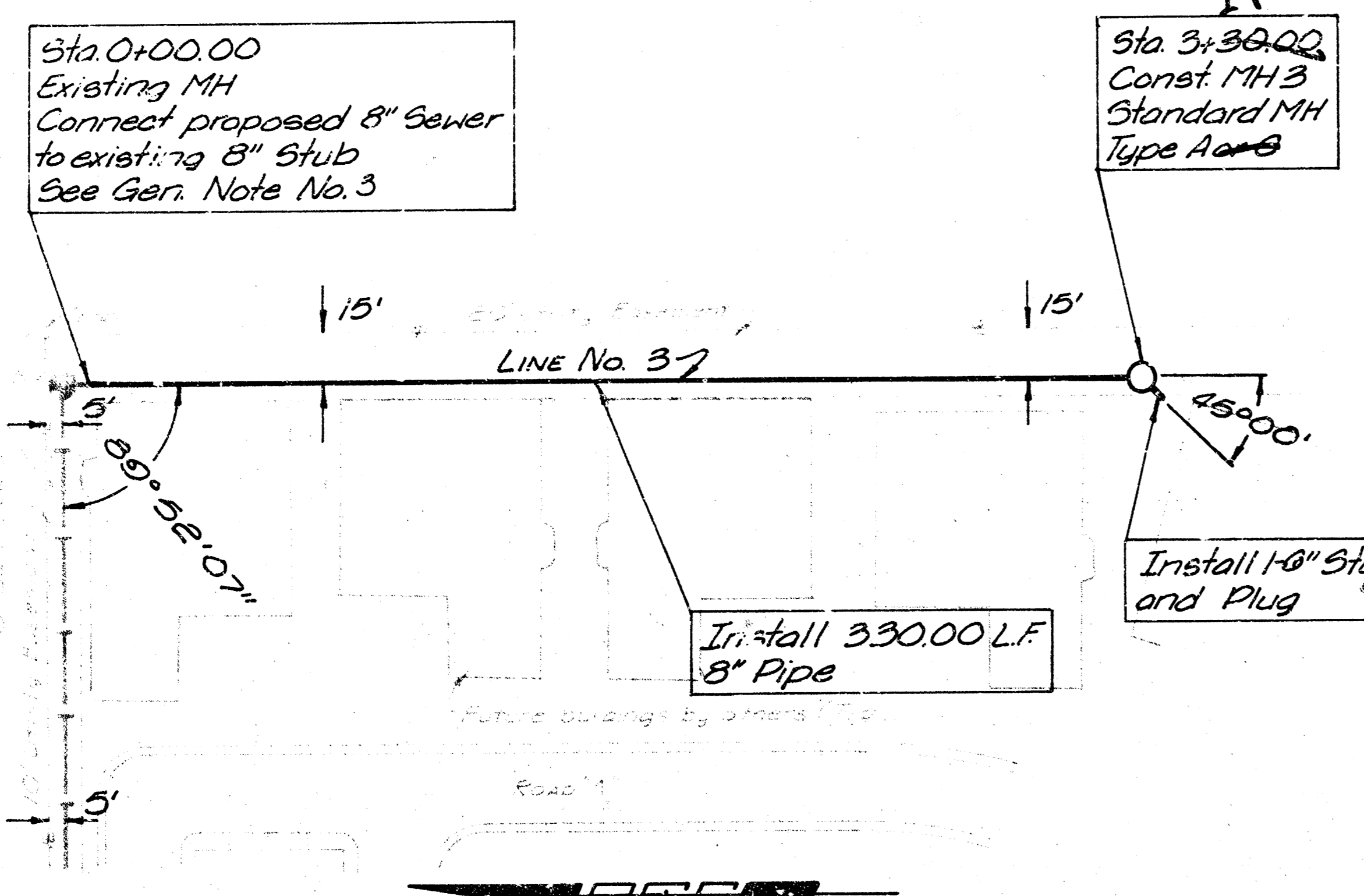
FILMED FROM THE BEST
AVAILABLE COPY



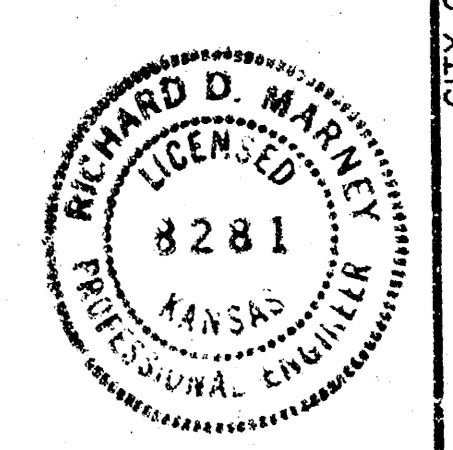
Note: Pipe type for LINE No. 1 shall be the same as that of the existing stub.



PROFESSIONAL ENGINEERING CONSULTANTS, P.A.
 WICHITA, KANSAS
 PROJECT NO. 182
 SHEET NO. 4 OF 5
 DATE: 10/26/15

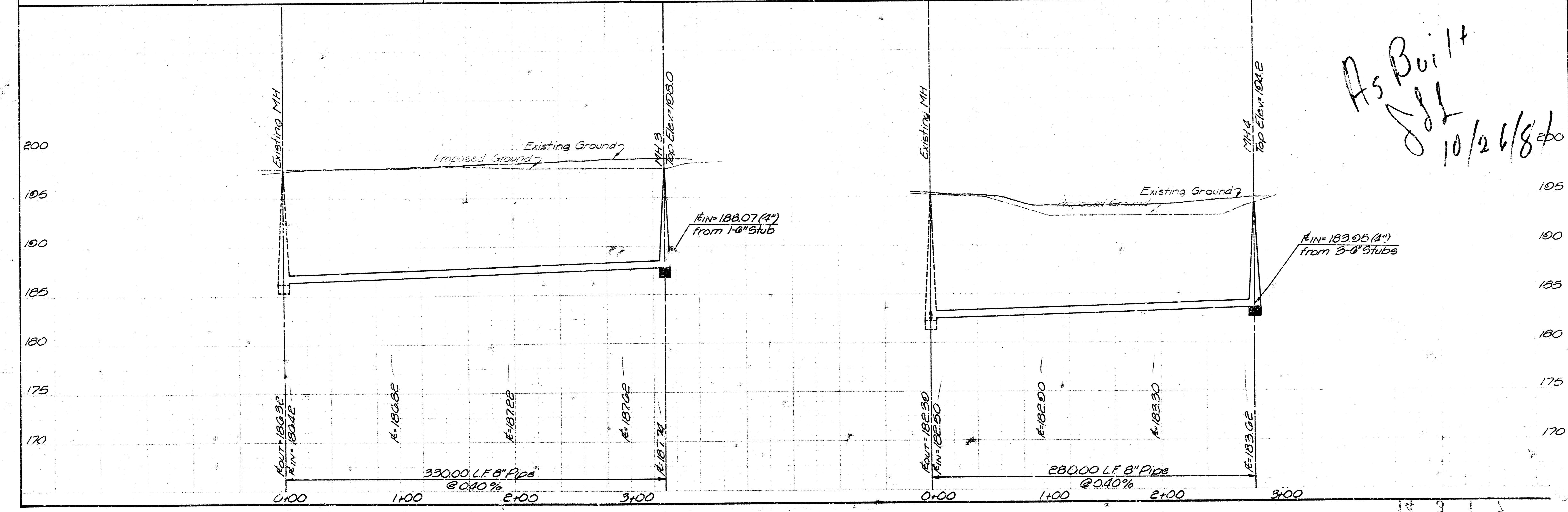


NOTE: Pipe type for LINE No. 3 shall be the same as that of the existing stub.



PROFESSIONAL ENGINEERING CONSULTANTS, P.A.
 CITY OF WICHITA, KANSAS
 LATERAL 7, MAIN 22
 WAR INDUSTRY SEWER
 LINE NO. 3 & 4
 COUNTRY PLACE GREENS - PHASE II
 G. OF W. PROJECT NO. 488-76-245-80799-000-000-001
 Drawn by: ROM MDS
 Checked by: TC
 Date: Oct. 1990
 Sheet: 5 of 5

As Built
 JLL
 10/26/81



14 3 1 1