

LATERAL II, MAIN 22, W.I.S.

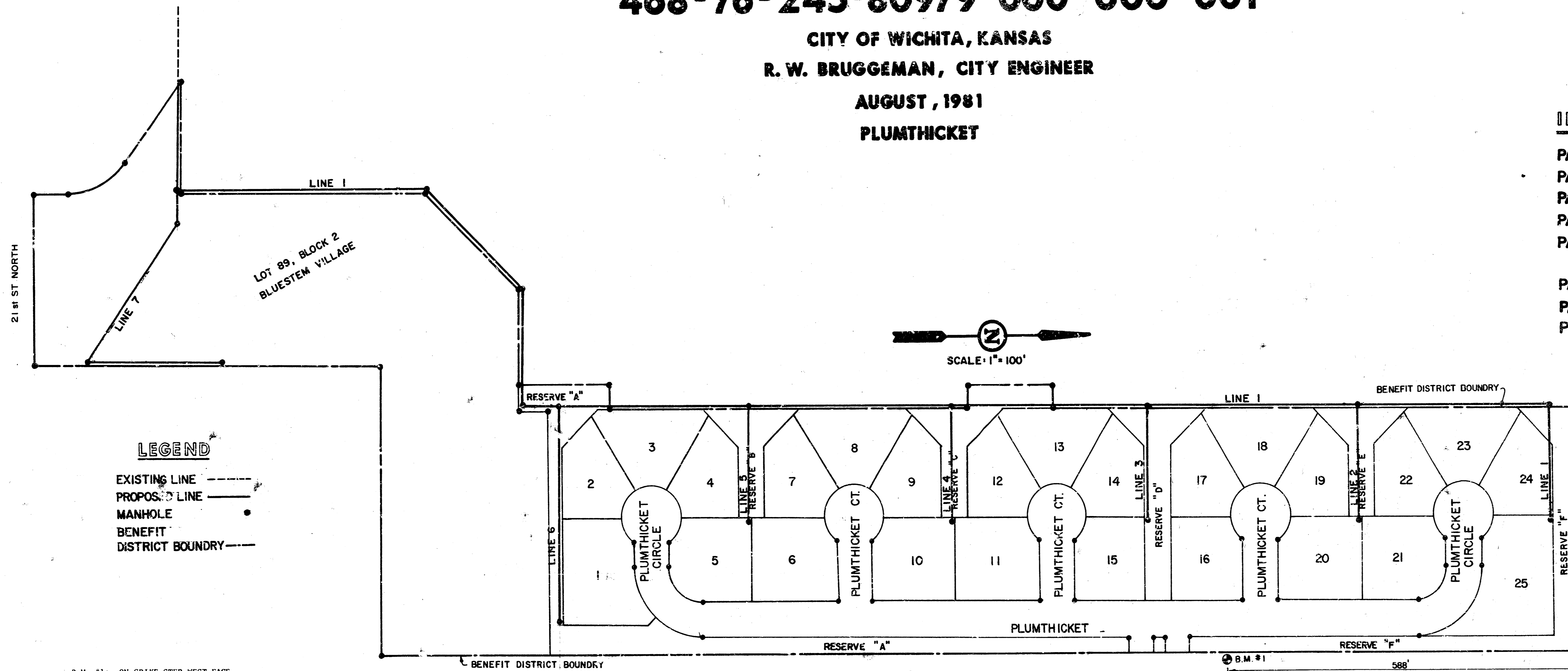
PROJECT NO.
468-76-245-80979-000-000-001

CITY OF WICHITA, KANSAS
R. W. BRUGGEMAN, CITY ENGINEER
AUGUST, 1981
PLUMTHICKET

B.M.#2

INDEX TO DRAWINGS

PAGE 1	COVER SHEET
PAGE 2	LINE ONE
PAGE 3	LINE ONE
PAGE 4	LINE ONE
PAGE 5	LINE TWO, THREE & FOUR
PAGE 6	LINE FIVE, SIX
PAGE 7	LINE SEVEN
PAGE 8	PLAT



LEGEND

- EXISTING LINE - - - - -
- PROPOSED LINE - - - - -
- MANHOLE ●
- BENEFIT DISTRICT BOUNDARY - - - - -

B.M. #1: ON SPIKE STEP WEST FACE OF POWER POLE, SOUTH OF E 1/4 CORNER, SEC. 5, T 27 S, R 2 E, 26' W OF EDGE OF PAVEMENT OF WEBB ROAD. ELEV. = 229.85

B.M. #2: SPIKE STEP IN WEST FACE OF POWER POLE, EAST OF CENTER SECTION 5, T 27 S, R 2 E. ELEV. = 221.86

NOTE: THE CONTRACTOR SHALL BE RESPONSIBLE FOR PRESERVING PROPERTY IRONS. THE CONTRACTOR SHALL BE REQUIRED TO RE-ESTABLISH ANY PROPERTY IRONS WHICH ARE DAMAGED OR DESTROYED BY HIS CONSTRUCTION OPERATIONS. SUCH IRONS SHALL BE RE-ESTABLISHED BY A LICENSED LAND SURVEYOR OR A LICENSED PROFESSIONAL ENGINEER IN ACCORDANCE WITH STATE LAWS.

As Built
JST
1/82

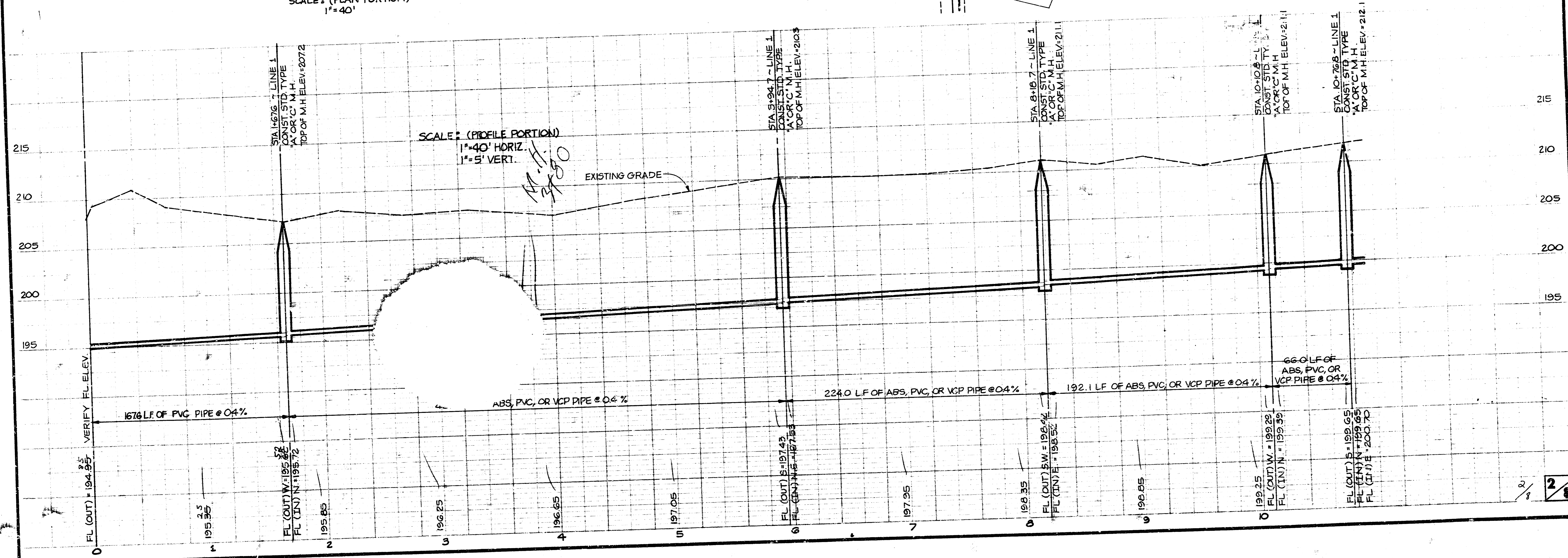
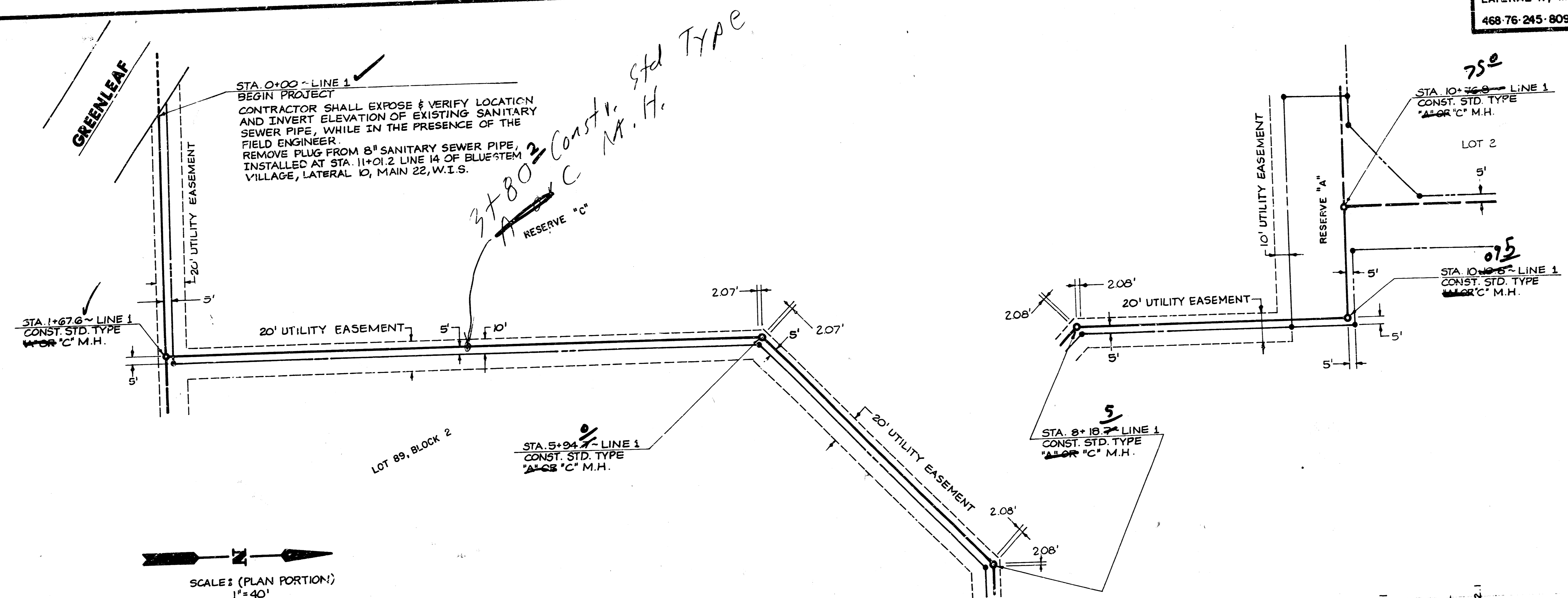


Van Doren - Hazard - Stallings
 Architects • Engineers • Planners
 Topeka Wichita Minneapolis

Sheet 1 of 8

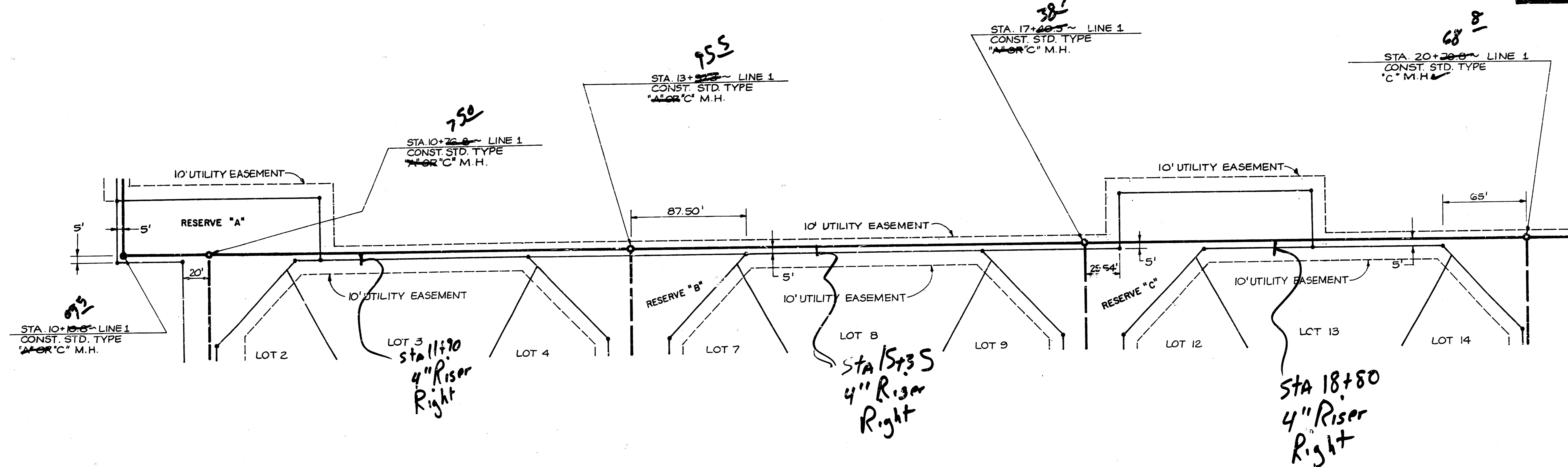
FILMED FROM THE BEST AVAILABLE COPY

PLUMTHICKET
 LATERAL II, MAIN 22
 468-76-245-80979-000-000-C01

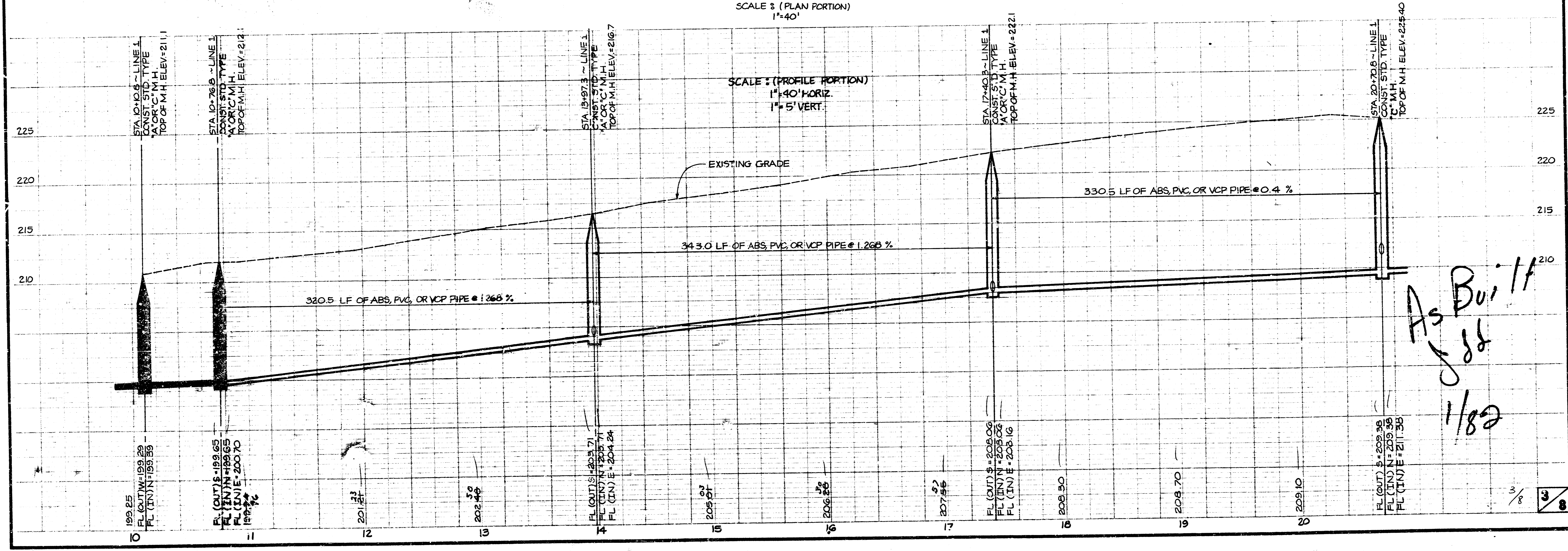


FILED FROM THE BEST AVAILABLE COPY

PLUMTHICKET
 LATERAL II, MAIN 22
 468 76 245 80979 000 000 001



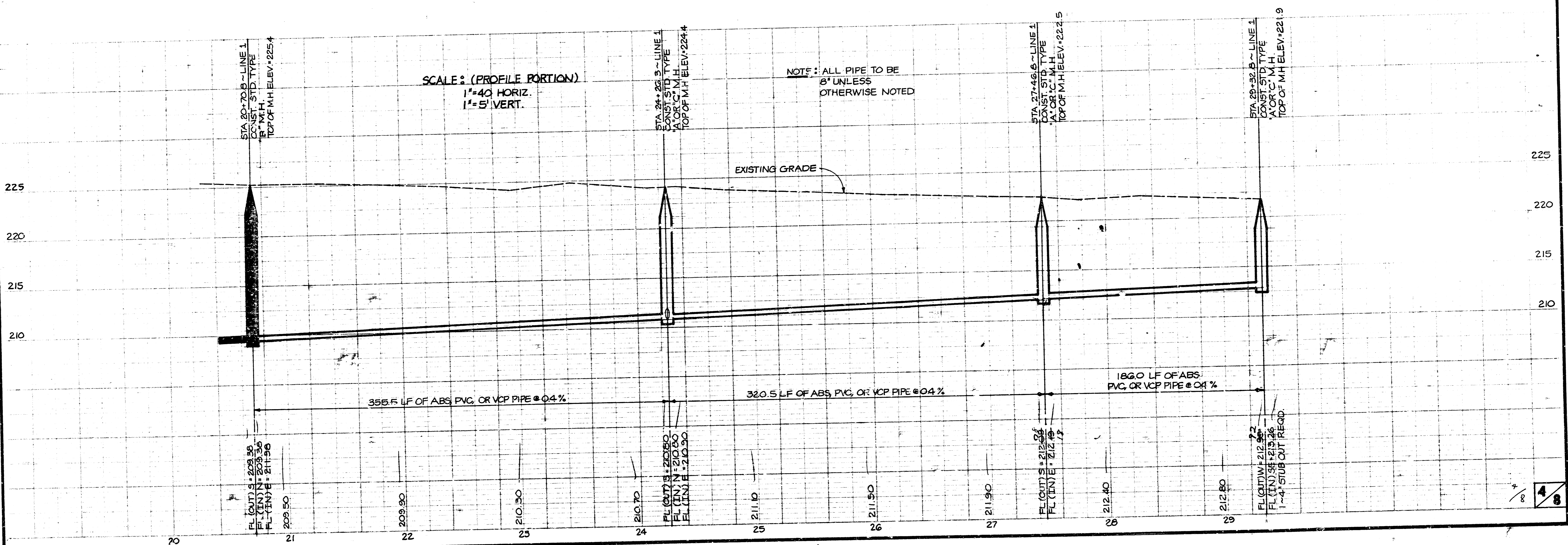
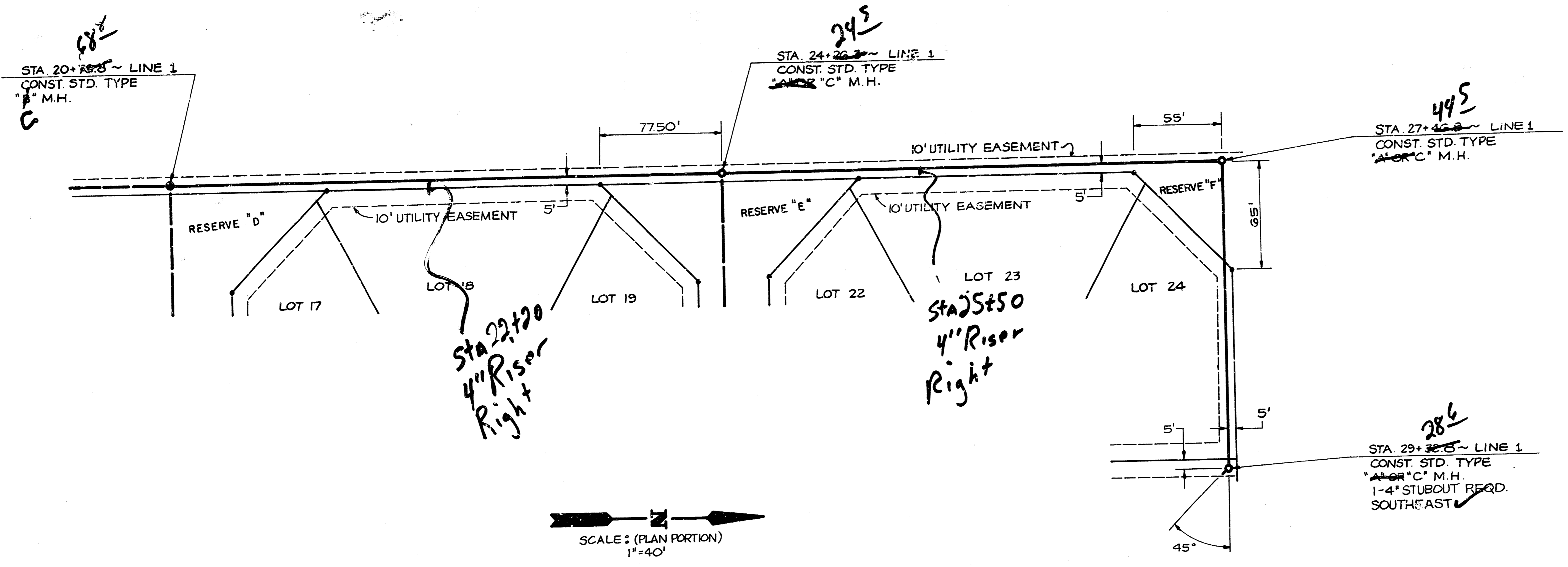
SCALE: (PLAN PORTION)
 1"=40'



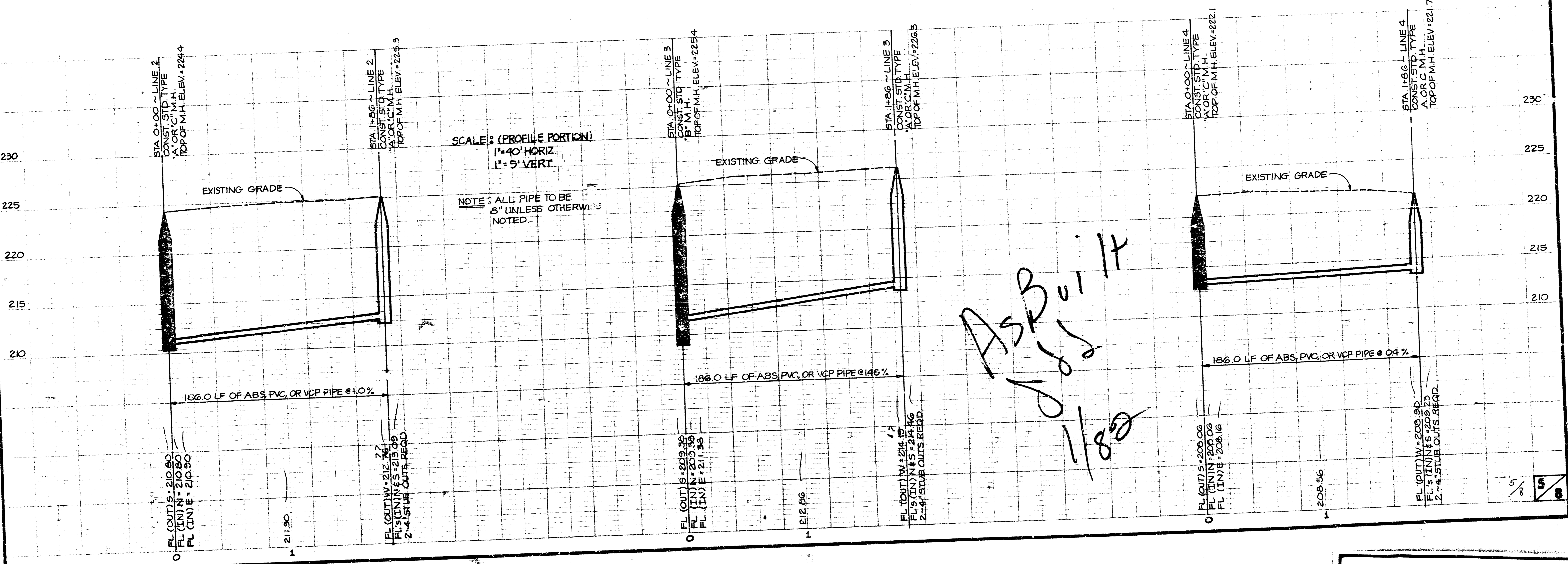
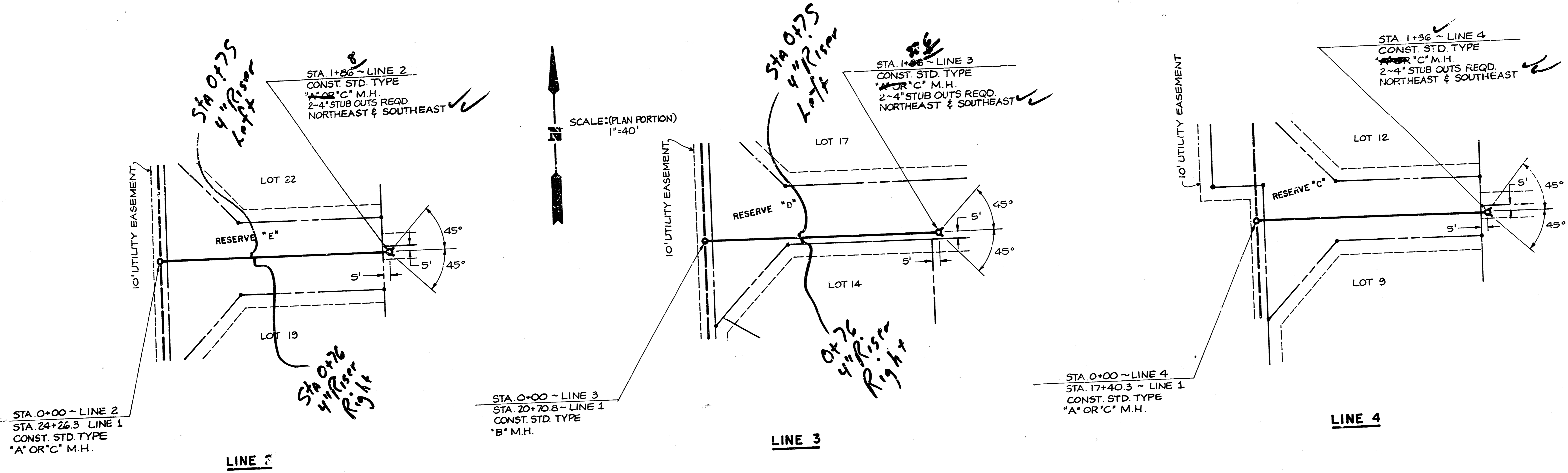
SCALE: (PROFILE PORTION)
 1"=40' HORIZ.
 1"=5' VERT.

As Built
1/82

3/8

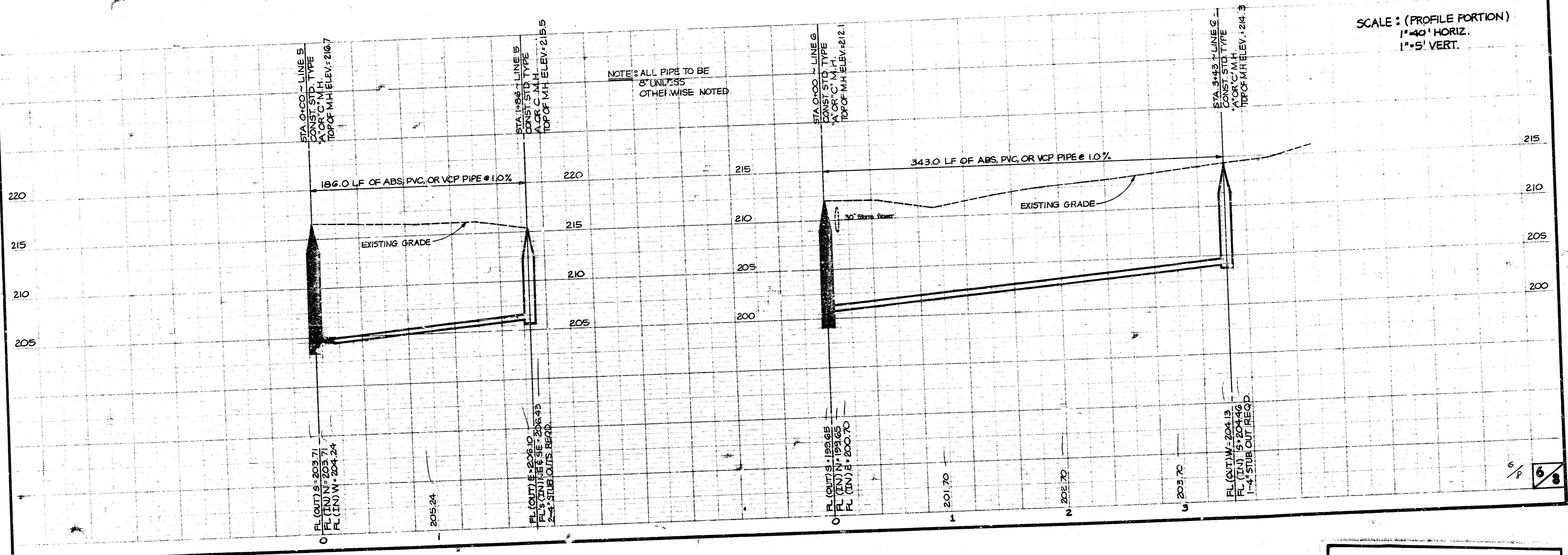
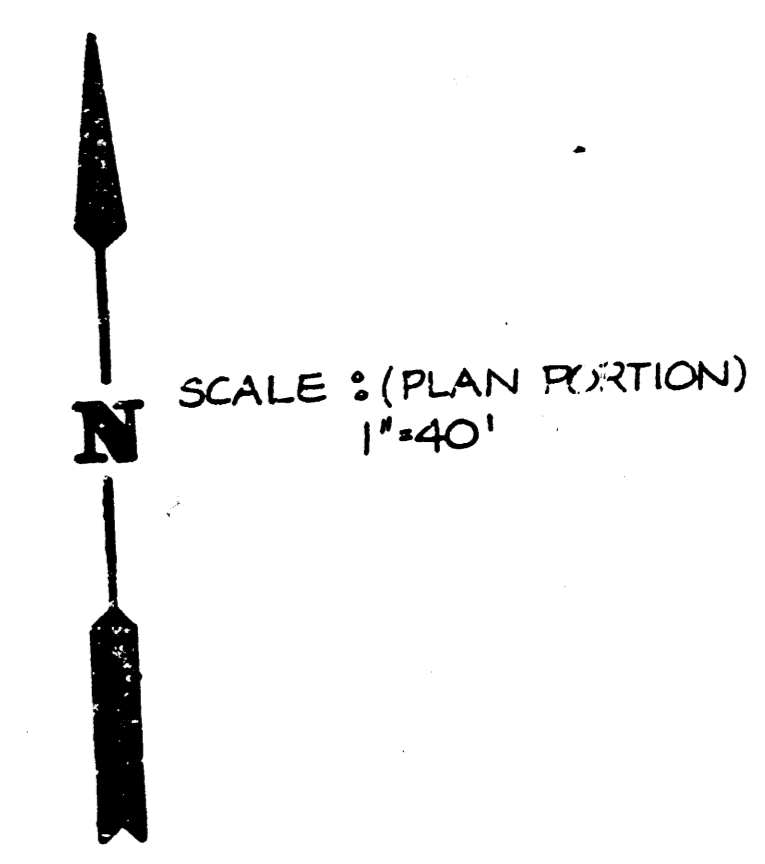
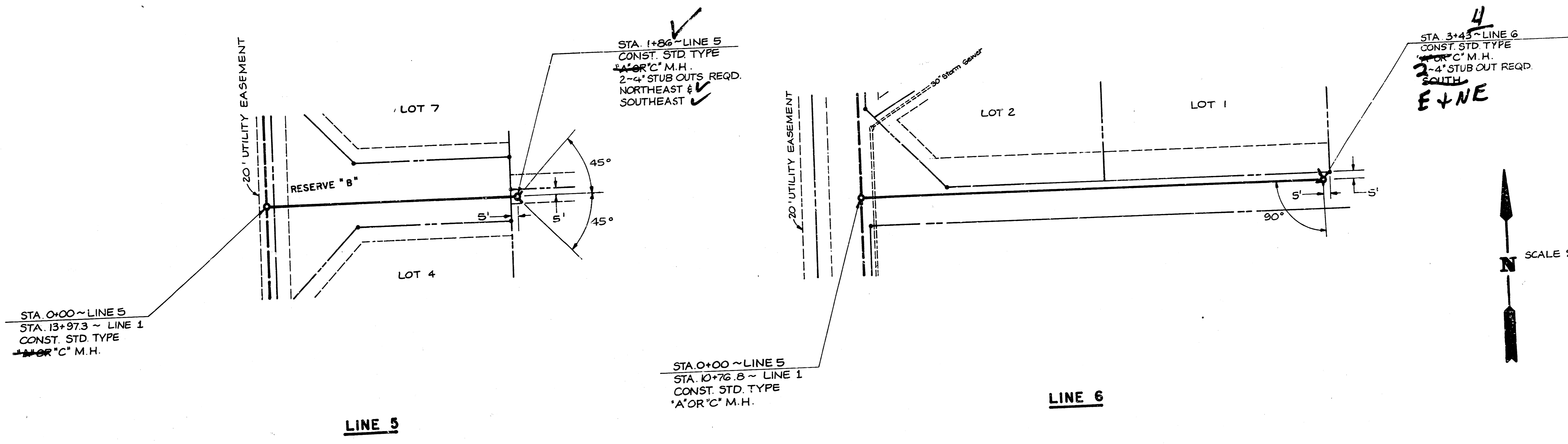


PLUMTHICKET
 LATERAL II, MAIN 22
 469-76-245-80979-000-000-001



FILMED FROM THE BEST
 AVAILABLE COPY

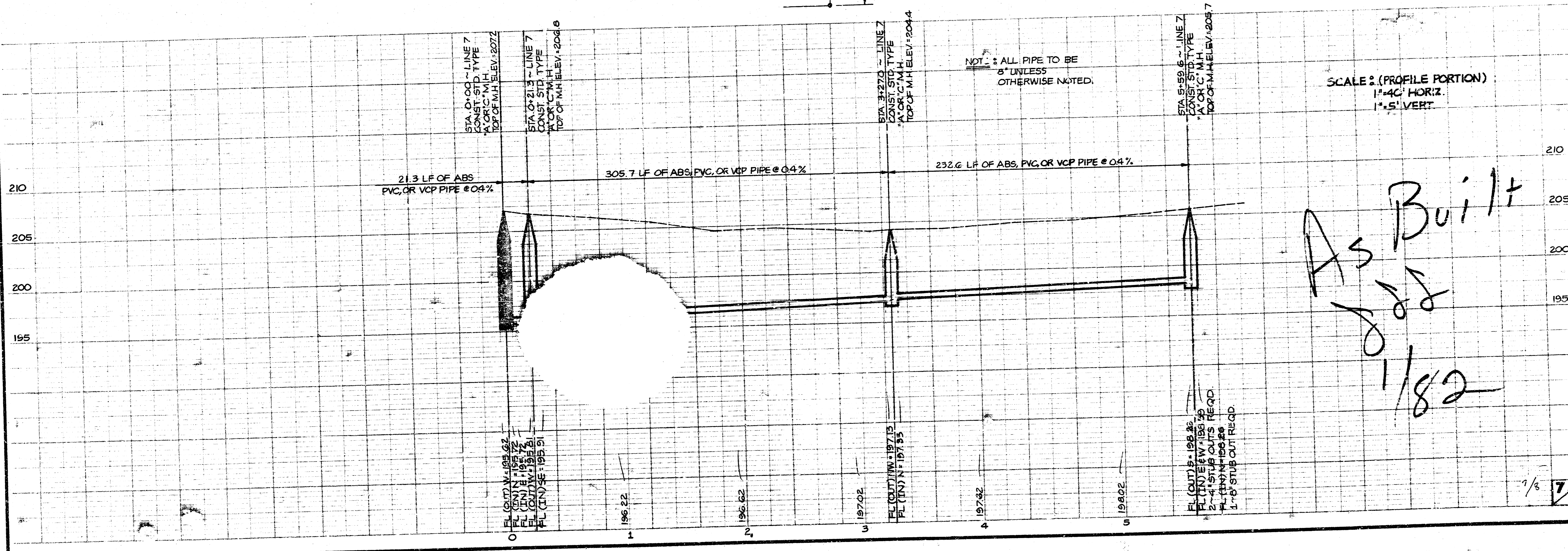
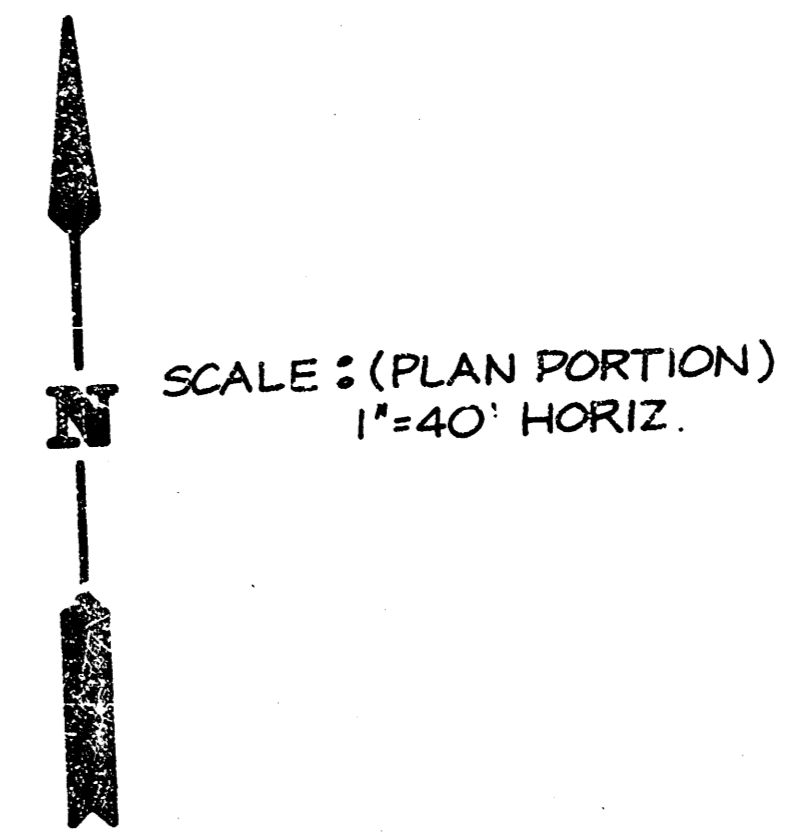
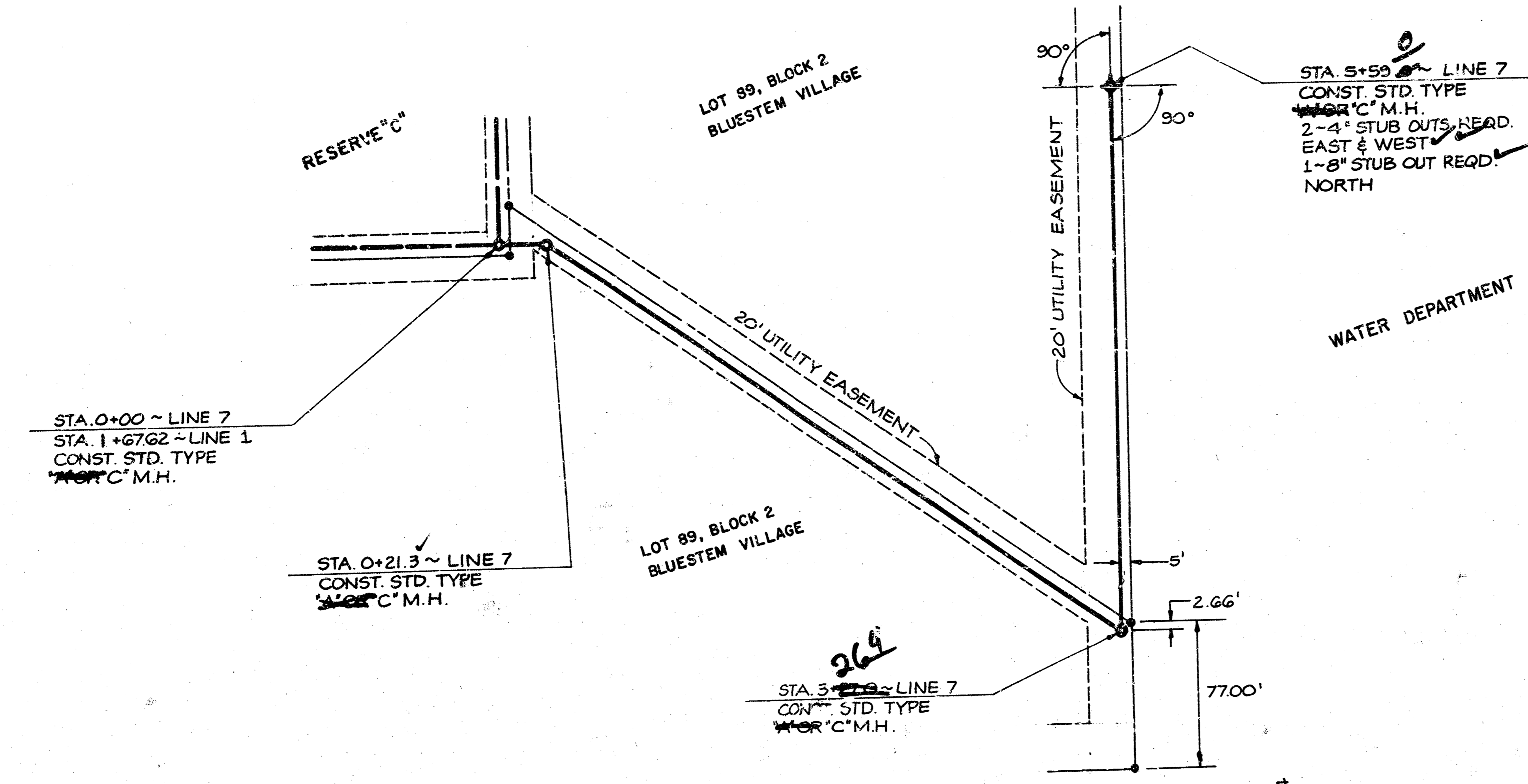
PLUMTHICKET
 LATERAL 11, MAIN 22
 468-76-245-80979-000-000-001



6/8

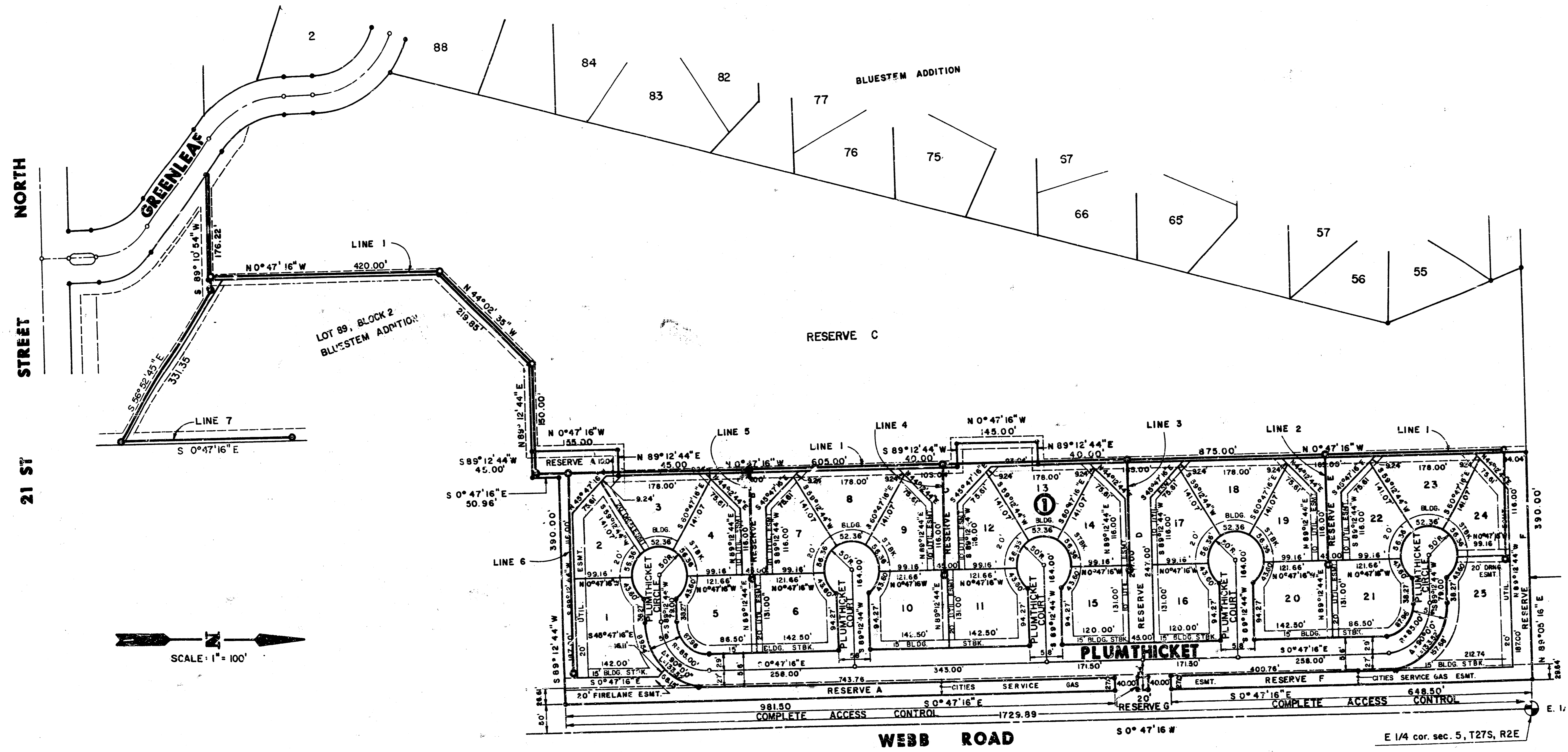
FILMED FROM THE BEST AVAILABLE COPY

PLUMTHICKET
 LATERAL 11, MAIN 22
 468-76-245-80979-000-000-001



FILMED FROM THE BEST
AVAILABLE COPY

PLUMTHICKET
LATERAL 11, MAIN 22
468-76-245-80979-000-000-001



5/8

FILMED FROM THE BEST
AVAILABLE COPY....