

WAR INDUSTRIES SEWER  
LATERAL 19, MAIN 22

# TALLGRASS COMMERCIAL FIRST ADDITION

PROJECT NO.  
468 76 245 31252 000 000 001

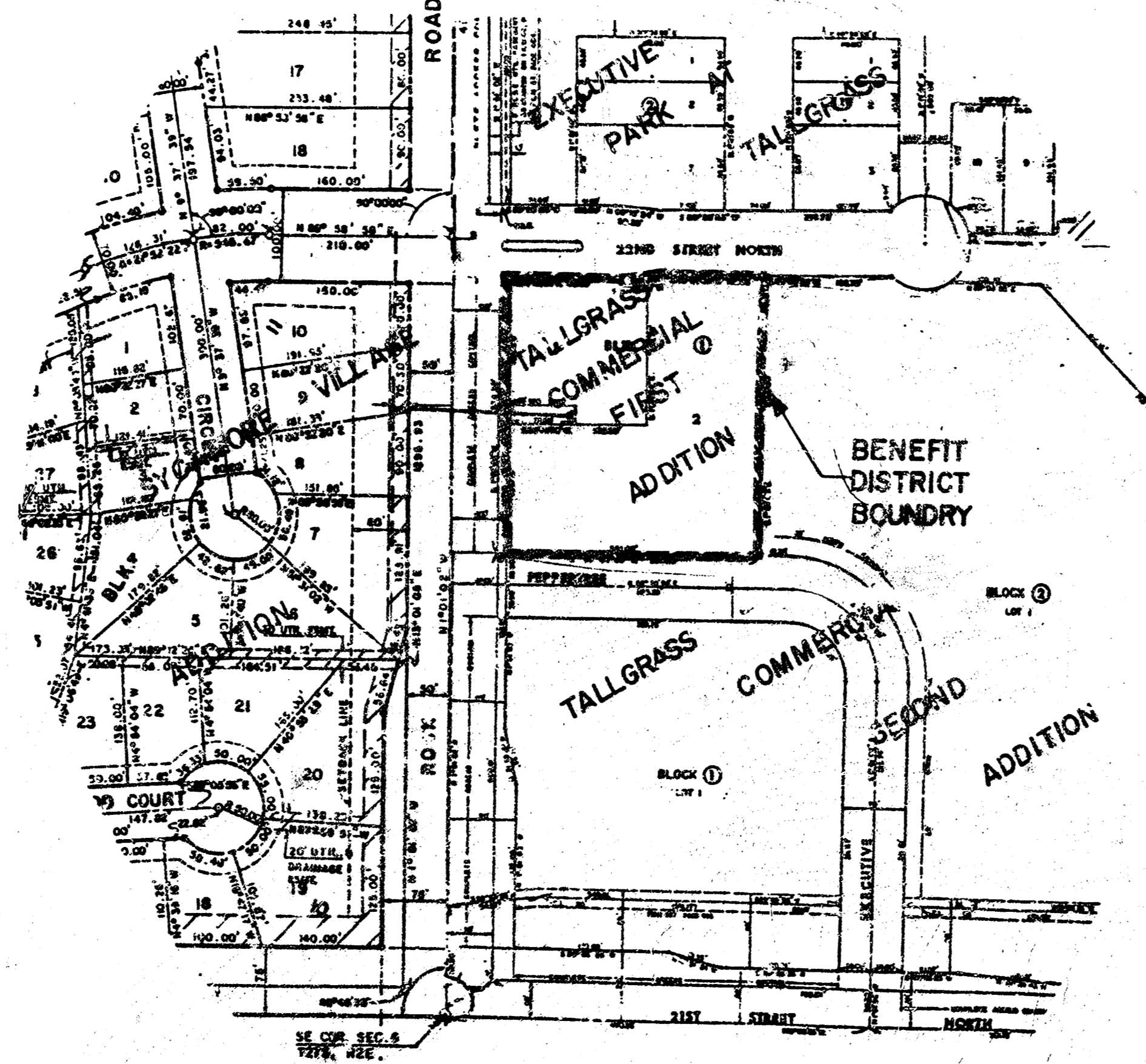
CITY OF WICHITA, KANSAS  
MIKE LINDEBAK, CITY ENGINEER  
MAY 19, 1984

### GENERAL NOTES

- 1- THE CONTRACTOR SHALL BE RESPONSIBLE FOR PRESERVING PROPERTY IRONS. THE CONTRACTOR SHALL BE REQUIRED TO RE-ESTABLISH ANY PROPERTY IRONS WHICH ARE DAMAGED OR DESTROYED BY HIS CONSTRUCTION OPERATIONS. SUCH IRONS SHALL BE RE-ESTABLISHED BY A LICENSED LAND SURVEYOR OR A LICENSED PROFESSIONAL ENGINEER IN ACCORDANCE WITH STATE LAWS.
- 2- A PORTION OF EXCESS EXCAVATED MATERIAL SHALL BE MOUNDING AROUND HARBORS WHICH EXTEND MORE THAN ONE (1) FOOT ABOVE THE EXISTING GROUND. SUCH MOUNDS SHALL BE CONSTRUCTED WITH A SIX (6) FEET DIAMETER FLAT TOP WITH 4 TO 1 SIDE SLOPES DOWN TO THE ORIGINAL GROUND. THE ELEVATION OF THE FLAT TOP OF THE MOUND SHALL BE 0.4 FOOT BELOW THE TOP OF THE HARBOR.
- 3- CONTRACTOR SHALL NOTIFY THE UTILITY COMPANIES OF CONSTRUCTION SCHEDULING AND LOCATION OF ANY UNDERGROUND LINES.
- 4- EXISTING UTILITIES AND THEIR LOCATIONS, AS SHOWN ON THE PLANS, REPRESENT THE BEST INFORMATION OBTAINABLE FOR DESIGN. LOCATION INFORMATION HAS BEEN OBTAINED FROM THE VARIOUS UTILITY COMPANIES AND IS EITHER FROM COMPANY RECORD DRAWINGS OR COMPANY PROVIDED FIELD LOCATIONS. THE PLAN LOCATIONS SHOWN ARE NOT GUARANTEED. ADDITIONAL EXISTING UTILITIES MAY ALSO BE ENCOUNTERED.

### BENCH MARKS

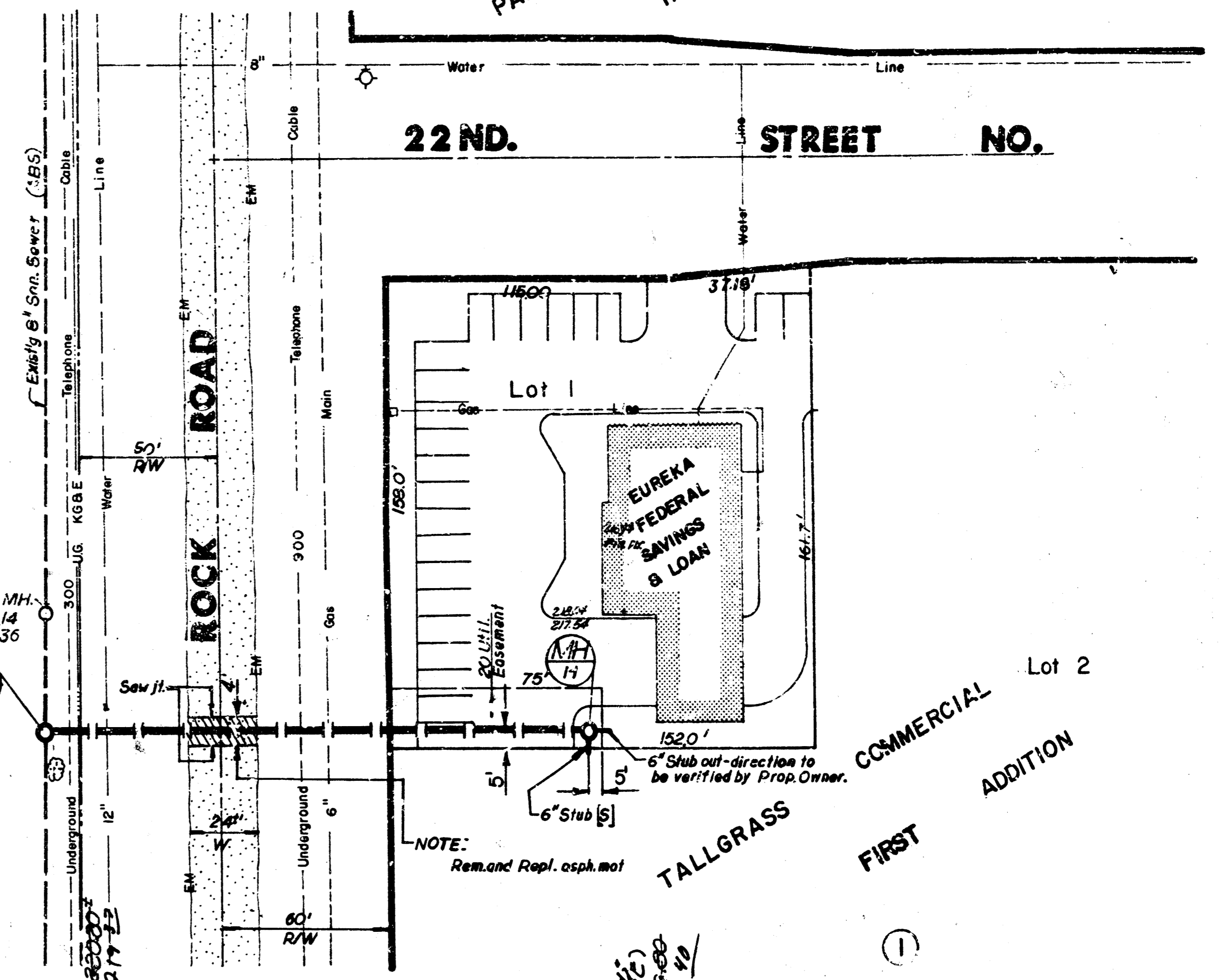
- BM #1 Spk. Stake in P.P. 50' N. of the N.E. Cor. 22nd St. E. & Rock Road  
Elev. = 217.99
- BM #2 " " Cut on N. Line of 22nd St. N. 15' W. of Prop. Iron on Cal-de-Sac  
Elev. = 215.66
- BM #3 City Std. 21st & Rock Road, 45' N. & 48' E. of C.L. North  
Elev. = 214.57



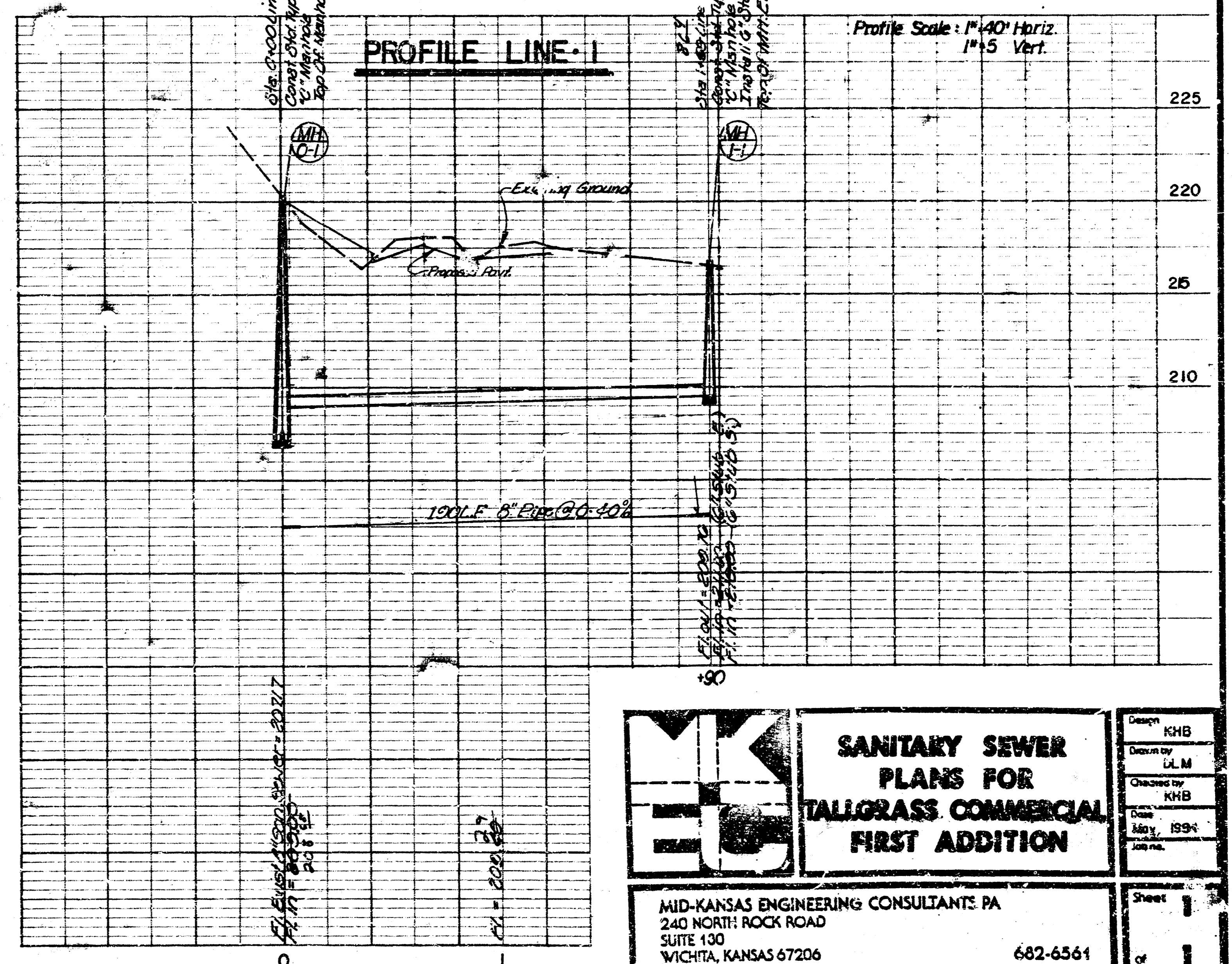
*As Built  
JLL  
984*

Scale: 1" = 40'

NOTE TO CONTRACTOR  
"CAUTION" When crossing Utility Lines



PLAN LINE-1



	<b>SANITARY SEWER PLANS FOR TALLGRASS COMMERCIAL FIRST ADDITION</b>	Design: KHB Drawn by: LLM Checked by: KHB Date: May 1984 Job No.
	MID-KANSAS ENGINEERING CONSULTANTS PA 240 NORTH ROCK ROAD SUITE 100 WICHITA, KANSAS 67206 682-6561	Sheet 1 of 1