

# SANITARY SEWER PLANS

## LAT. 21, MAIN 22 W.I.S.


# WOODSPRING THIRD ADDITION

## PROJECT NO.

### 468-76-245-81270-000-000-001

CITY OF WICHITA, KANSAS  
MICHAEL E. LINDEBAK, CITY ENGINEER  
DECEMBER, 1986

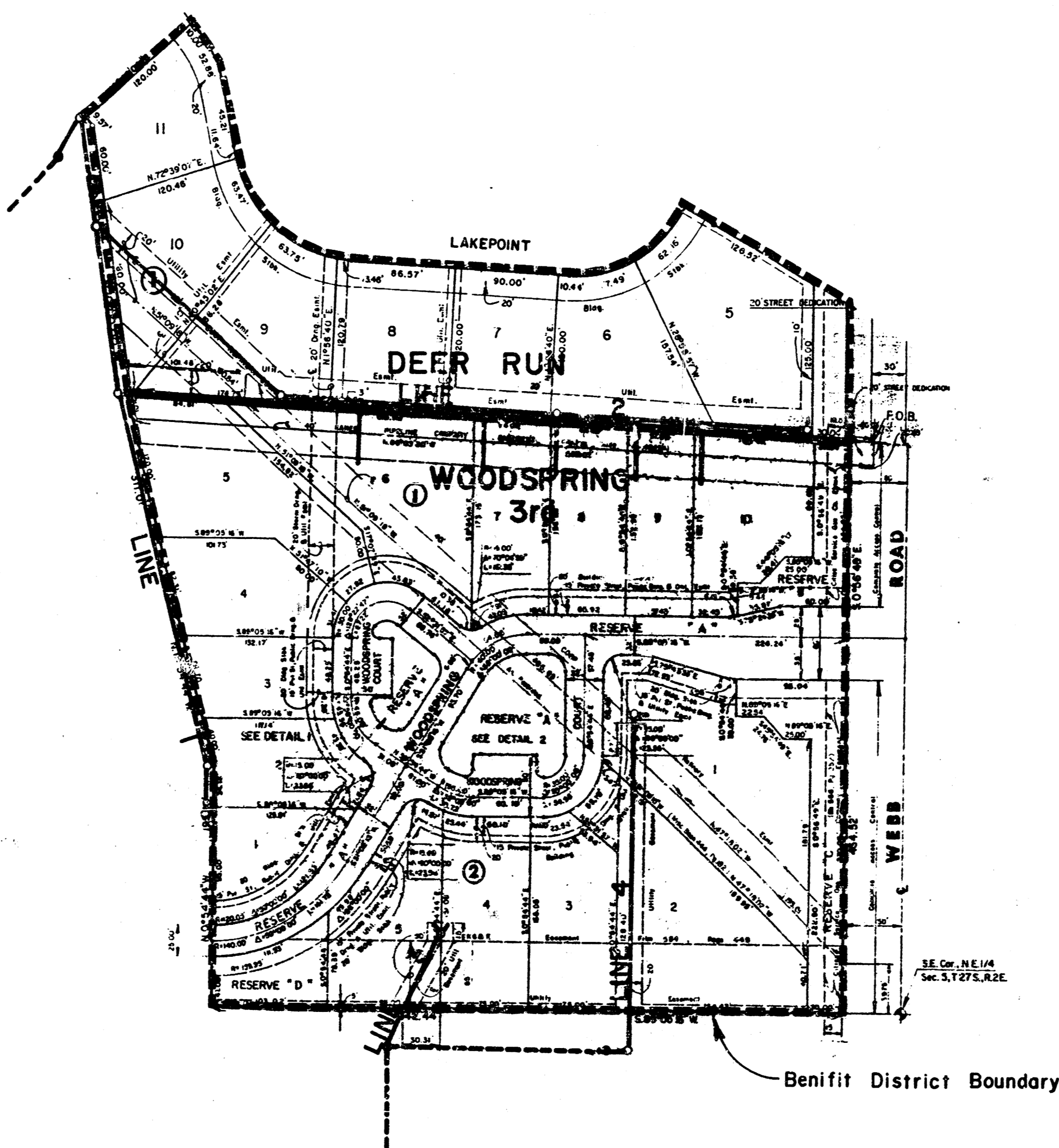
#### GENERAL NOTES

1. THE CONTRACTOR SHALL BE RESPONSIBLE FOR PRESERVING PROPERTY IRONS. THE CONTRACTOR SHALL BE REQUIRED TO RE-ESTABLISH ANY PROPERTY IRONS WHICH ARE DAMAGED OR DESTROYED BY HIS CONSTRUCTION OPERATIONS. SUCH IRONS SHALL BE RE-ESTABLISHED BY A LICENSED LAND SURVEYOR OR A LICENSED PROFESSIONAL ENGINEER IN ACCORDANCE WITH STATE LAWS.
2. TREES TO BE REMOVED ARE MARKED  ALL TREES WHICH IN THE OPINION OF THE FIELD ENGINEER CAN BE SAVED, SHALL BE SAVED.
3. A PORTION OF EXCESS EXCAVATED MATERIAL SHALL BE MOUNDED AROUND MANHOLES WHICH EXTEND MORE THAN ONE (1) FOOT ABOVE THE EXISTING GROUND. SUCH MOUNDS SHALL BE CONSTRUCTED WITH A SIX (6) FOOT DIAMETER FLAT TOP WITH 4 TO 1 SIDE SLOPES DOWN TO THE ORIGINAL GROUND. THE ELEVATION OF THE FLAT TOP OF THE MOUND SHALL BE 0.4 FOOT BELOW THE TOP OF THE MANHOLE.
4. EXISTING UTILITIES AND THEIR LOCATIONS, AS SHOWN ON THE PLANS, REPRESENT THE BEST INFORMATION OBTAINABLE FOR DESIGN. LOCATION INFORMATION HAS BEEN OBTAINED FROM THE VARIOUS UTILITY COMPANIES AND IS EITHER FROM COMPANY RECORD DRAWINGS OR COMPANY PROVIDED FIELD LOCATIONS. THE PLAN LOCATIONS SHOWN ARE NOT GUARANTEED. ADDITIONAL EXISTING UTILITIES MAY ALSO BE ENCOUNTERED.
5. ALL STUBS AND PLUGGED PIPES SHALL BE LOCATED WITH GREEN PLASTIC TAPE IN THE SAME MANNER AS RISERS.
6. COST OF EXCAVATION, HAULING, AND DUMPING OF EXCESS EXCAVATION SHALL BE SUBSIDIARY TO THE PROJECT.
7. PRIOR TO LAYING SEWER LINES USING EXISTING STUBS IN EXISTING MANHOLES, THE CONTRACTOR SHALL EXPOSE AND VERIFY THE ELEVATION, GRADE AND ALIGNMENT OF EXISTING STUBS AND NOTIFY THE ENGINEER OF ANY DEVIATION FROM THE PLAN. WHERE CONNECTING TO AN EXISTING MANHOLE THAT DOES NOT HAVE AN EXISTING STUB OR THE STUB IS UNUSABLE DUE TO ELEVATION GRADE OR ALIGNMENT, THE CONTRACTOR SHALL RESHAPE THE EXISTING MANHOLE INVERT TO PROVIDE SMOOTH FLOW. THE COST OF RESHAPING EXISTING MANHOLE INVERTS IS INCIDENTAL TO THE PROJECT.
8. CONTRACTOR SHALL NOTIFY THE FOLLOWING UTILITY COMPANIES PRIOR TO ANY EXCAVATION:
 

ARKLA GAS COMPANY	942-8350
BELL TELEPHONE	1-316-571-2115
CABLEVISION	262-0661
GAS SERVICE COMPANY	263-7511
KANSAS GAS & ELECTRIC	1-800-344-7233
KANSAS ONE-CALL	524-0491
CITIES SERVICE	316-254-7243
KANSAS GAS SUPPLY	316-681-2081
CONTINENTAL PIPELINE COMPANY	316-262-1408
KANEB	

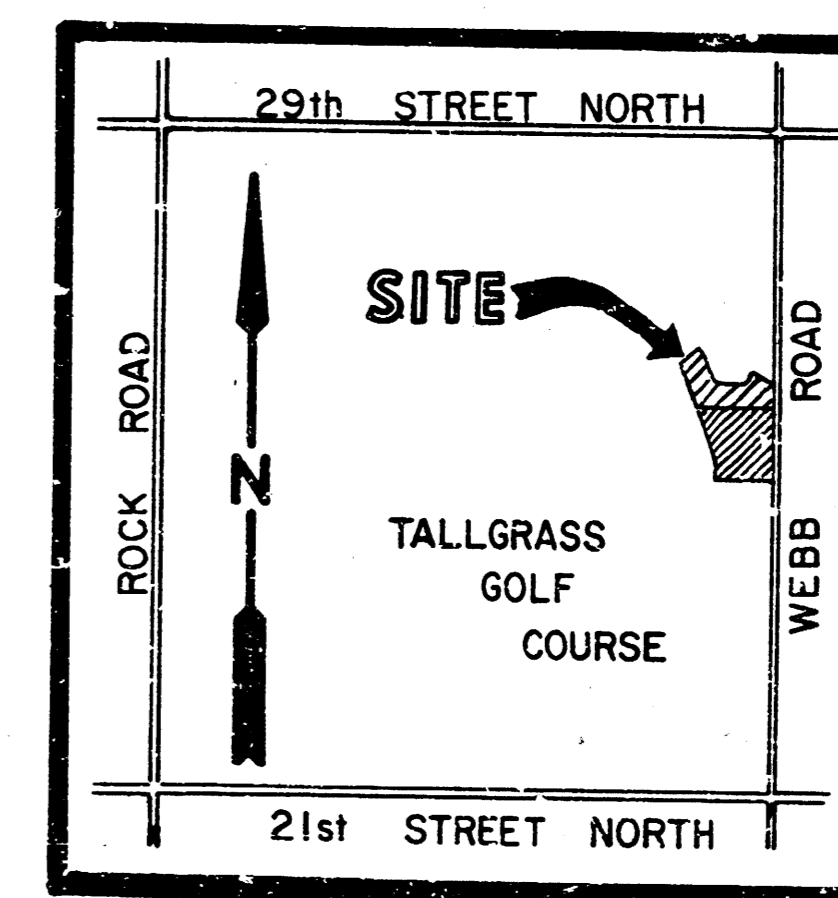
#### BENCH MARKS

- B.M. #1 WEBB ROAD AND 25TH STREET NORTH  
CITY OF WICHITA BENCH MARK  
DIST. 32' NORTH AND 28' EAST  
OF QUARTER SECTION CORNER.  
ELEV. = 225.091
- B.M. #2 SPIKE STEP IN \*\* POLE, + 500'  
WEST OF WEBB ROAD  
ELEV. = 221.87



#### INDEX TO DRAWINGS

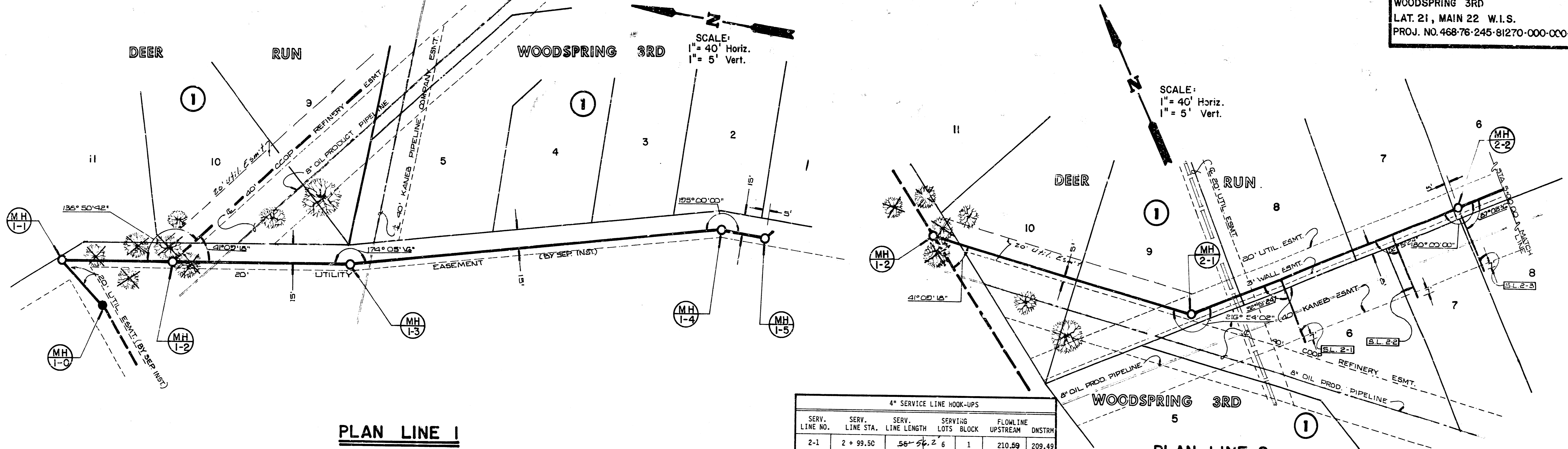
Sheet No.	Description
1	Title Sheet
2	Line 1 & 2
3	Line 2, 3, & 4
4	Final Plat



*AS BUILT  
RDC  
12-87*

	<b>WOODSPRING THIRD ADDITION SANITARY SEWER PLANS</b>	Drawn by Checked by Date Job No.
	MID-KANSAS ENGINEERING CONSULTANTS PA 3500 NORTH ROCK ROAD BUILDING #800 WICHITA, KANSAS 67226	
		Sheet 1 of 4

FILMED FROM THE BEST AVAILABLE COPY

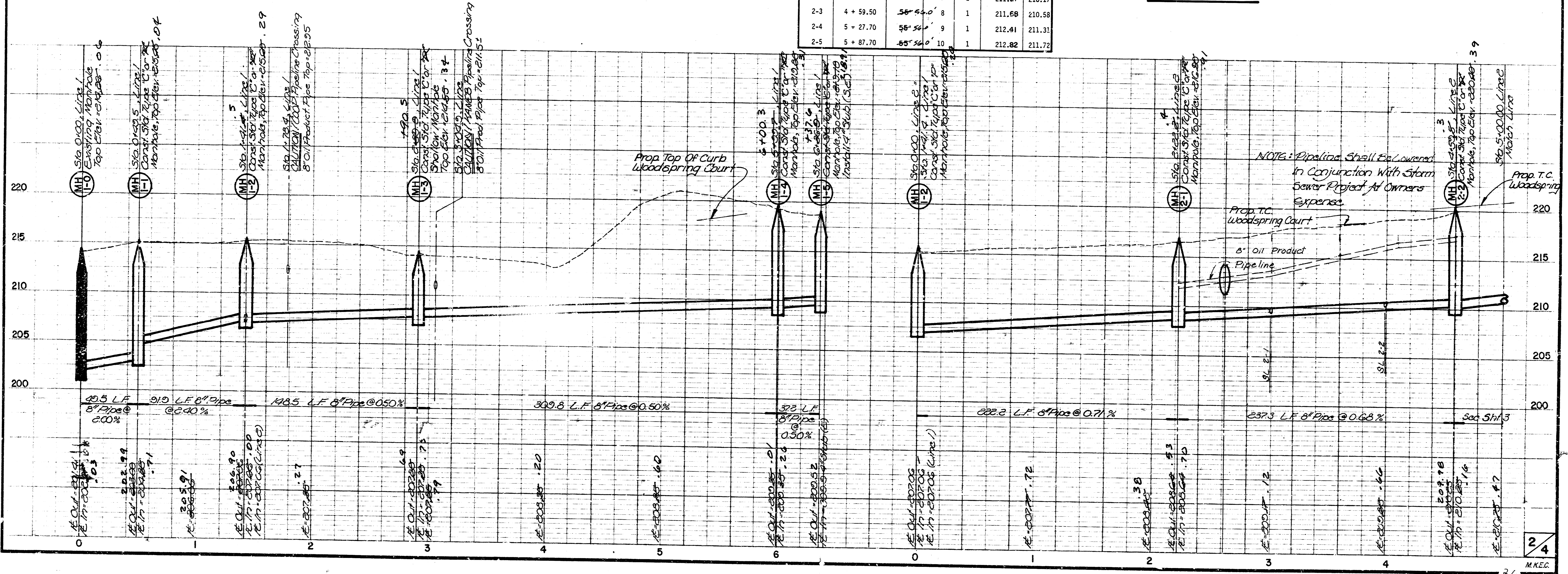


**PLAN LINE 1**

**PLAN LINE 2**

4" SERVICE LINE HOOK-UPS

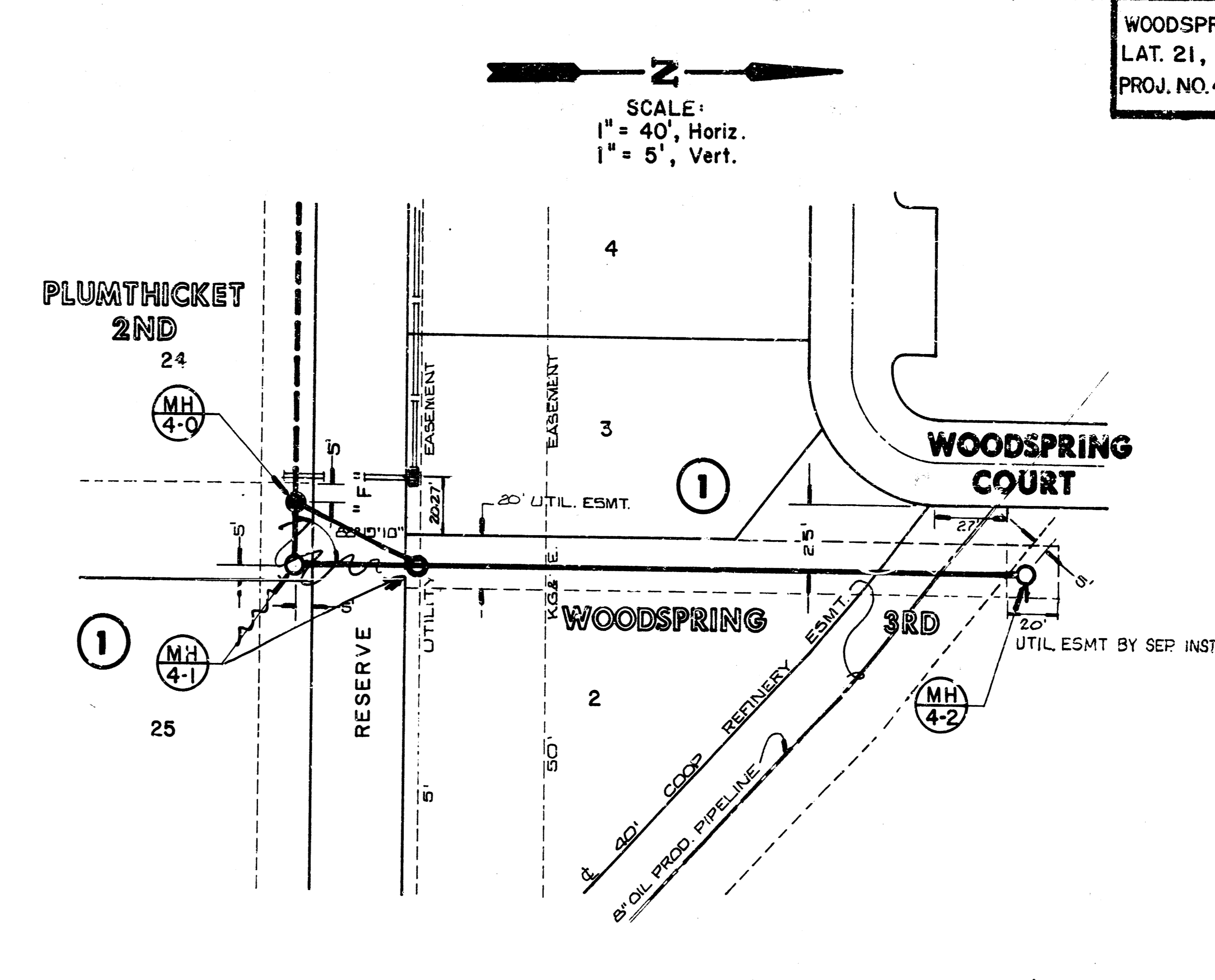
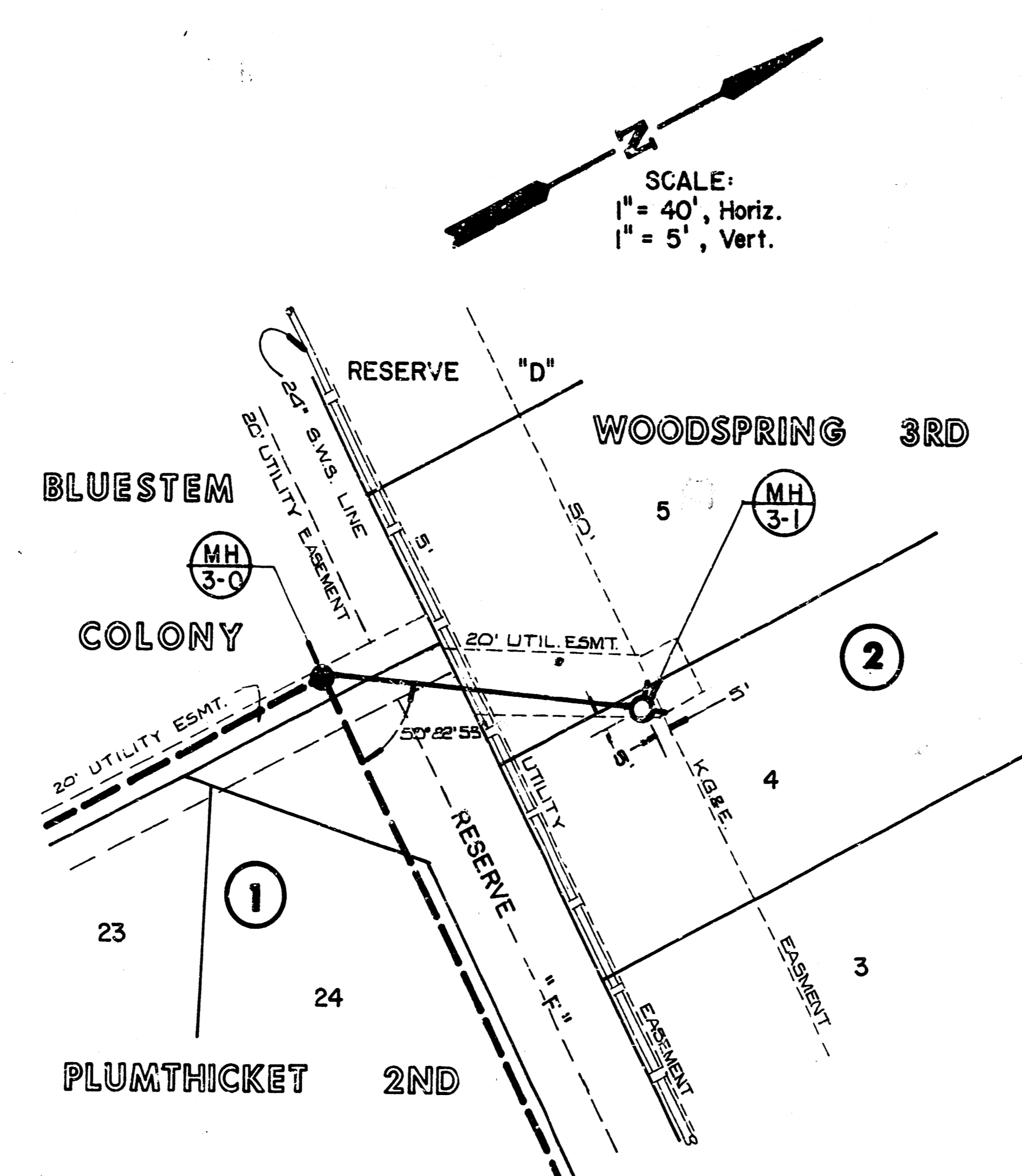
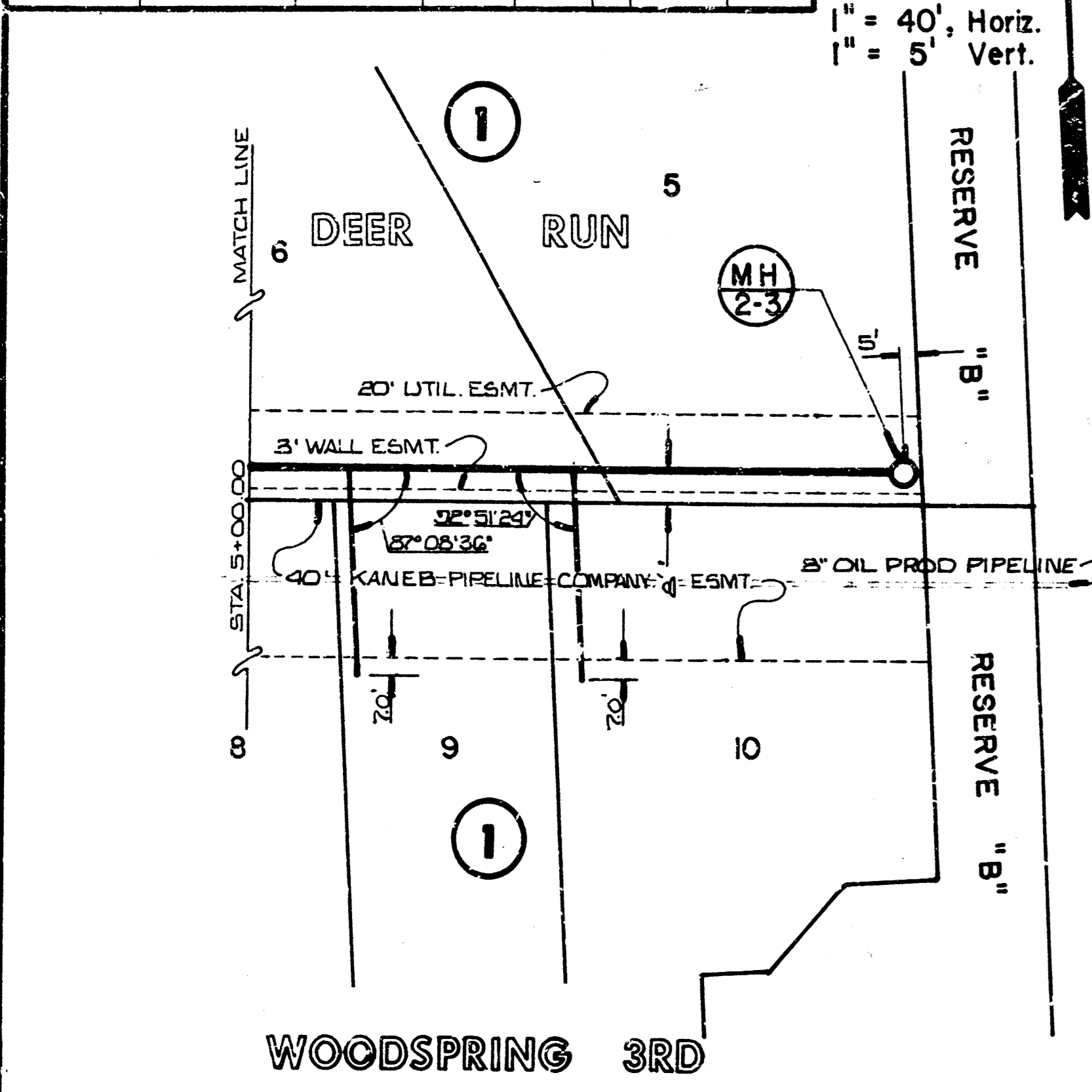
SERV. LINE NO.	SERV. LINE STA.	SERV. LINE LENGTH	SERVING LOTS	SERVING BLOCK	FLOWLINE UPSTREAM	FLOWLINE DNSTRM
2-1	2 + 99.50	55'-51.2'	6	1	210.59	209.49
2-2	3 + 99.50	55'-51.6'	7	1	211.27	210.17
2-3	4 + 99.50	55'-54.0'	8	1	211.68	210.58
2-4	5 + 27.70	55'-54.1'	9	1	212.41	211.31
2-5	5 + 87.70	55'-54.0'	10	1	212.82	211.72



WOODSPRING 3RD  
 LAT. 21, MAIN 22 W.I.S.  
 PROJ. NO. 468-76-245-81270-000-000-001

4" SERVICE LINE HOOK-UPS

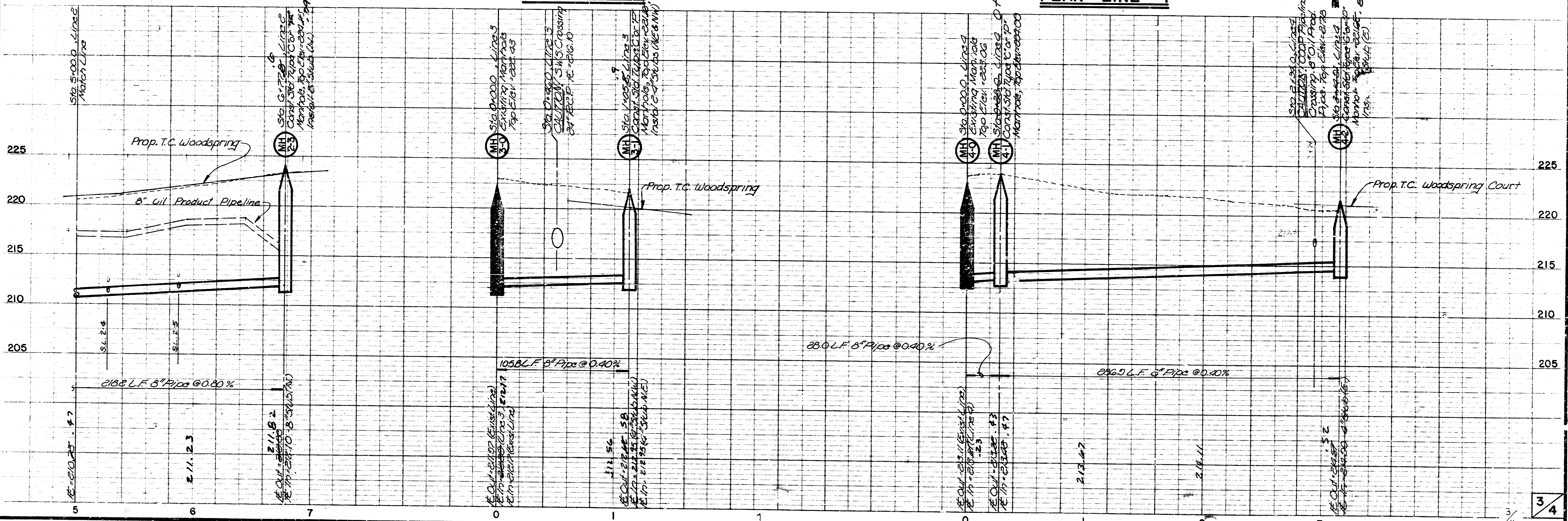
SERV. LINE NO.	SERV. LINE STA.	SERV. LINE LENGTH	SERVING LOTS	BLOCK	FLOWLINE UPSTREAM	DNSTRM
2-1	2 + 95.50	55'	5	1	210.59	209.49
2-2	3 + 99.50	55'	7	1	211.27	210.17
2-3	4 + 59.50	55'	8	1	211.68	210.58
2-4	5 + 27.70	55'	9	1	212.41	211.31
2-5	5 + 87.70	55'	10	1	212.82	211.72



PLAN LINE 2

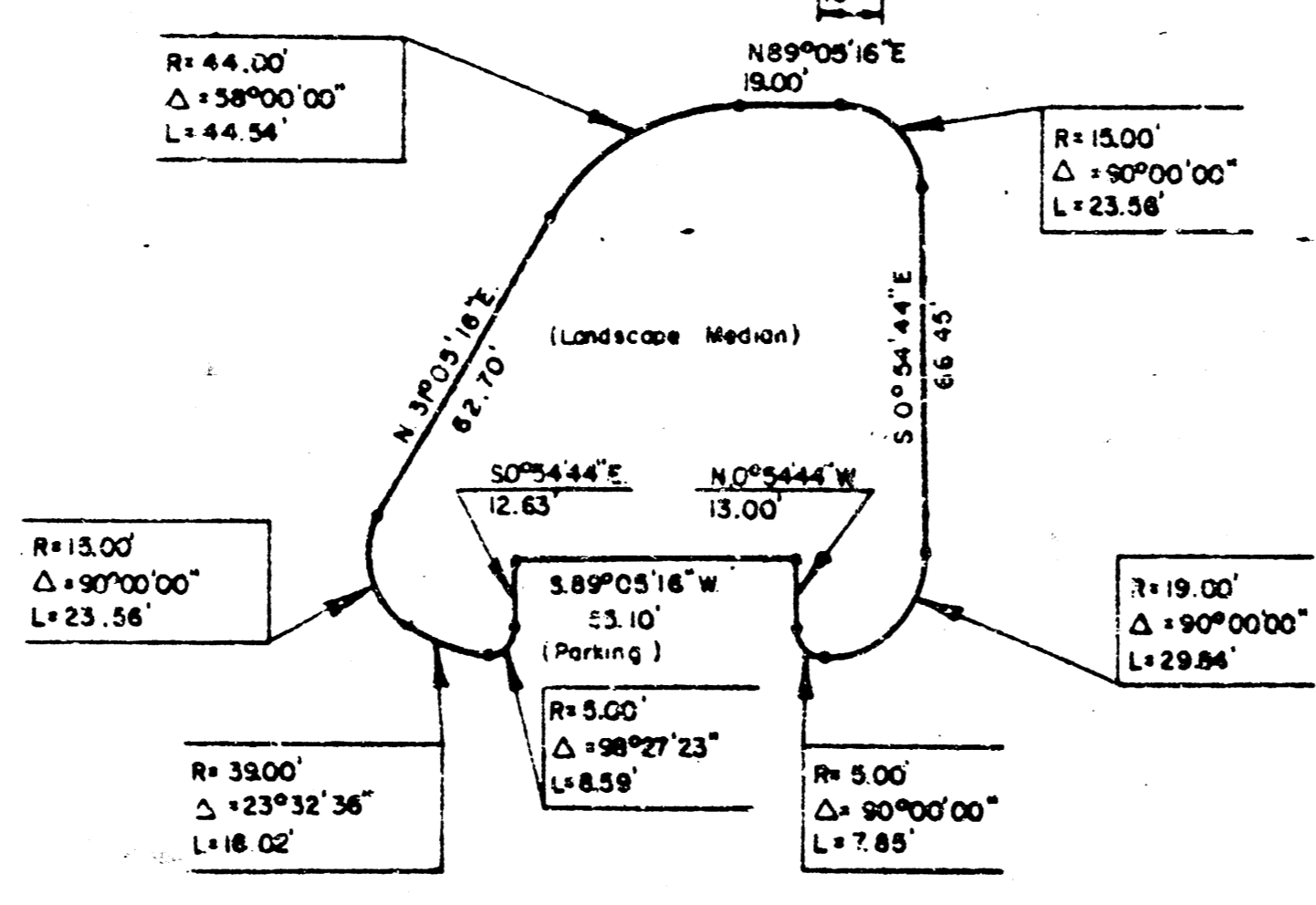
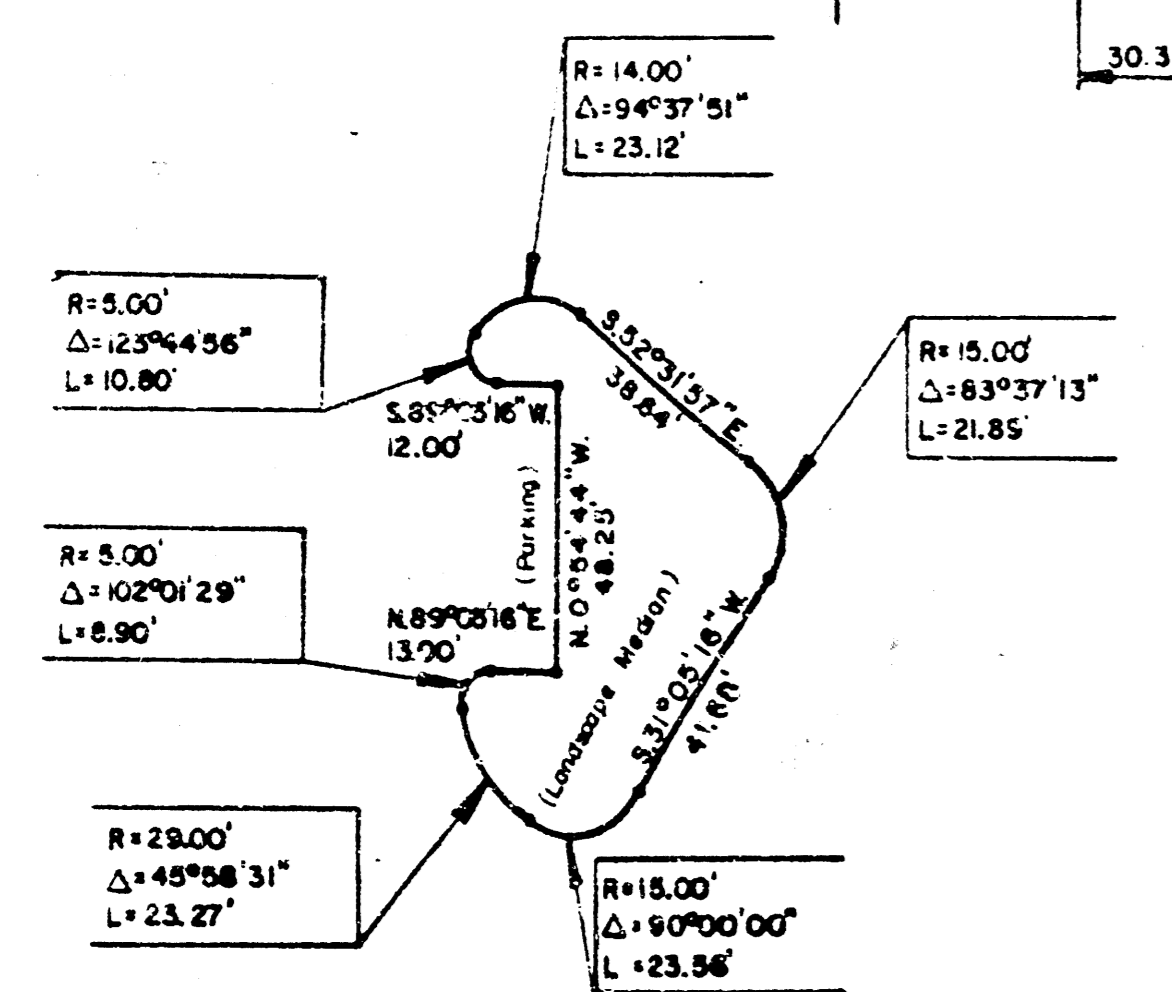
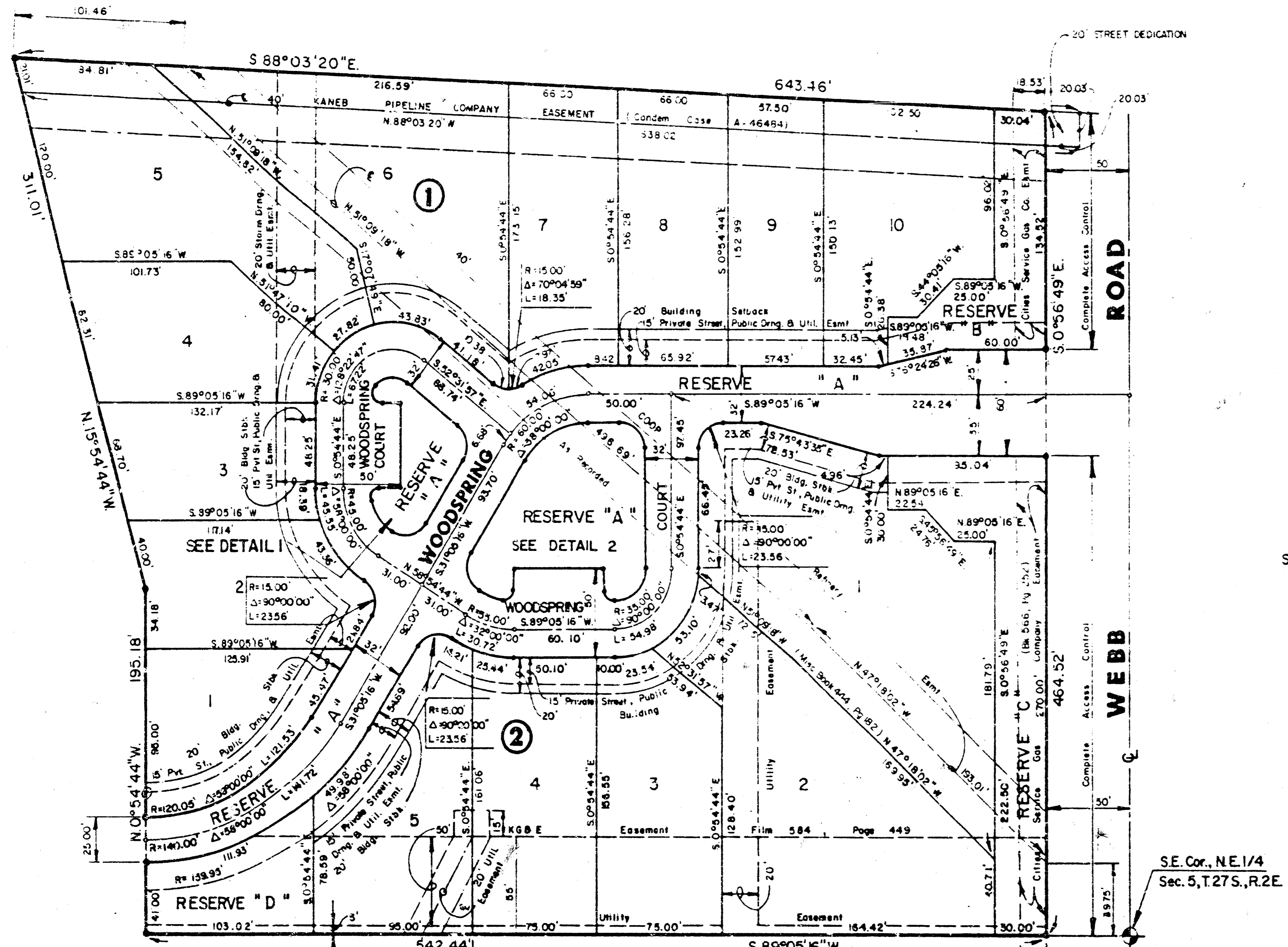
PLAN LINE 3

PLAN LINE 4



FILMED FROM THE BEST AVAILABLE COPY....

# FINAL PLAT OF WOODSPRING 3RD. AN ADDITION TO WICHITA, SEDGWICK COUNTY, KANSAS



I, Kenneth H. Bengtson, a Civil Engineer in Kansas, do hereby certify that I have been in responsible charge of surveying and platting of "WOODSPRING 3RD" an addition to Wichita, Sedgwick County, Kansas, into Lots, Blocks, Reserves, and Streets, the same being accurately set forth in the accompanying plat and described herein:

A tract of land lying in the Northeast Quarter, Section 5, Township 27 South, Range 2 East from the 6th P.M., more particularly described as follows:

A replat of Blocks 4 and 5 and that part of Reserve B lying between said Block 4 and 5 of Woodspring, an addition to Wichita, Sedgwick County, Kansas also including:

Beginning at the Northeast corner of Woodspring; thence N 88° 03' 20" W, 528.02 feet along the North line of said Woodspring, said line also being the centerline of a 40.00 foot KANE Easement, as condemned in case A-46484; thence N 15° 54' 44" W, 21.01 feet; thence S 88° 03' 20" E, 643.46 feet along the North line of said 40.00 foot KANE Easement; thence S 0° 56' 49" E, 20.03 feet to the point of beginning.

All lots, blocks, reserves and platted street, drainage and utility easements within the above described property are being vacated and replatted by virtue of K.S.A. 12-512(b).

I hereby certify that the details of this plat are correct to the best of my knowledge and belief this 1<sup>st</sup> day of September, 1986.

*Kenneth H. Bengtson*  
Kenneth H. Bengtson, P.E.  
Mid-Kansas Engineering Consultants, P.A.  
3500 N. Rock Road, Bldg. 800  
Wichita, KS 67226

Know all men by these presents that we, the undersigned property owners of the land as set forth in the Civil Engineer's Certificate, have caused the same to be surveyed and platted into lots, blocks, reserves and a street, the same to be known as "WOODSPRING 3RD", an addition to Wichita, Sedgwick County, Kansas. Easements for the construction and maintenance of public utilities and drainage, as indicated on the accompanying plat, are hereby granted to the City of Wichita. The street is hereby dedicated to and for the use of the public. All reserves are platted for construction and maintenance of public utilities, except that portion of Reserve A within the 50.00 foot KANE Easement, and open spaces. Reserve A is also platted for parking, private streets, drainage, and landscaping medians. Reserves B and C are platted for walls and entry monuments. Reserves B, C, & D are also platted for landscaping. All reserves shall be owned and maintained by the Woodspring 3rd Homeowners Association. All abutters' rights of access to or from Webb Road, over and across the East line of Reserves B and C, are hereby granted to the City of Wichita, Kansas.

SLAWSON INVESTMENT CORPORATION

By: *Larry A. Chambers*  
Larry A. Chambers, Vice President

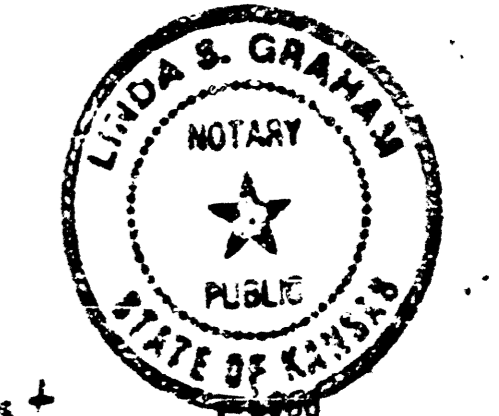
STATE OF KANSAS )  
SEDGWICK COUNTY ) SS:

Be it remembered that on this 24<sup>th</sup> day of July, 1986, before me a Notary Public in and for said State and County, came Slawson Investment Corporation, by Larry A. Chambers, Vice President, to me personally known to be the same person who executed the foregoing instrument of writing and duly acknowledged the execution of the same. In testimony whereof I have hereunto set my hand and affixed my notarial seal the day and year above written.

*Linda J. Graham*, Notary Public  
My Appointment Expires: 2-9-86

we, Mellon Bank, N.A., Pittsburgh, Pennsylvania, mortgagee on the above described property, do hereby consent to the plat of "WOODSPRING 3RD".

MELLOM BANK, N.A., Pittsburgh, Pennsylvania  
By: *Paul J. Graham*



STATE OF KANSAS )  
COUNTY OF SEDGWICK ) SS:

Be it remembered that on this 7<sup>th</sup> day of August, 1986, before me, a Notary Public in and for said State and County, came Mellon Bank, N.A., Pittsburgh, Pennsylvania, by Paul J. Graham, to me personally known to be the same person who executed the foregoing instrument of writing and duly acknowledged the execution of the same. In testimony whereof I have hereunto set my hand and affixed my notarial seal the day and year above written.

*Linda J. Graham*, Notary Public

My appointment Expires: 2-9-86

This plat of "WOODSPRING 3RD" has been submitted to and approved by the Wichita-Sedgwick County Metropolitan Area Planning Commission, Wichita, Kansas.

Dated this 15<sup>th</sup> day of May, 1986.

WICHITA-SEDGWICK COUNTY METROPOLITAN AREA PLANNING COMMISSION

*David Boyoun*, Vice-Chairman  
David Boyoun

*Michael E. Linnebak*, Secretary  
Michael E. Linnebak

This plat approved and all dedications shown hereon, if any, accepted by the City Commission of the City of Wichita, Kansas, this 30<sup>th</sup> day of SEPT, 1986.

*Tony Casado*, Mayor  
Tony Casado

*Donald C. Gistick*, City Clerk  
Donald C. Gistick

Entered on transfer record this 15<sup>th</sup> day of Oct, 1986.

*Don Wright*, County Clerk  
Don Wright

STATE OF KANSAS )  
SEDGWICK COUNTY ) SS:

This is to certify that this instrument was filed for record in the Register of Deeds office this 17<sup>th</sup> day of October, 1986.

*Pat Kettler*, Register of Deeds  
Pat Kettler

*Ed Nesa*, Deputy  
Ed Nesa

10 3 1 14 4 4

FILMED FROM THE BEST AVAILABLE COPY....